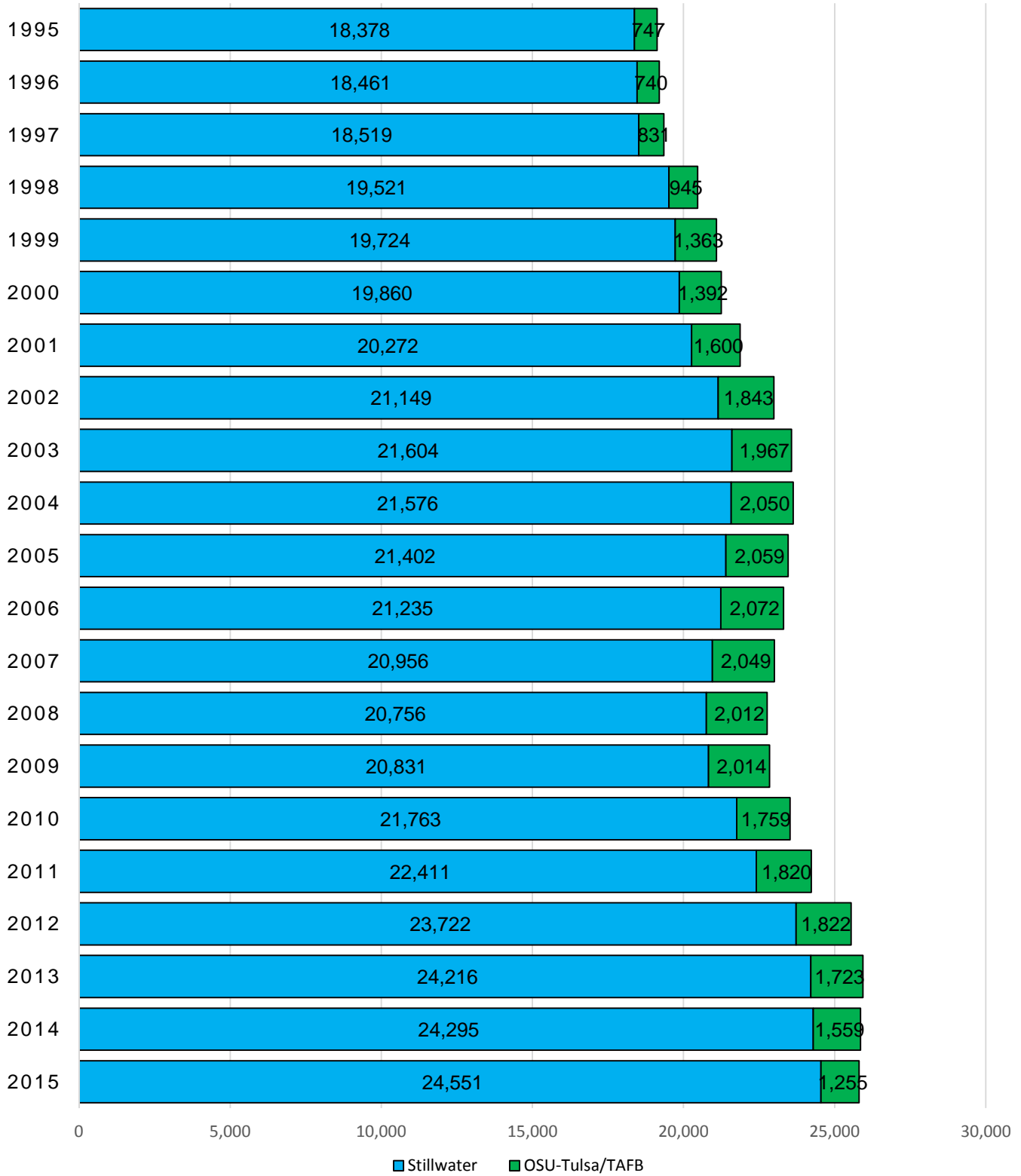


ENROLLMENT TRENDS

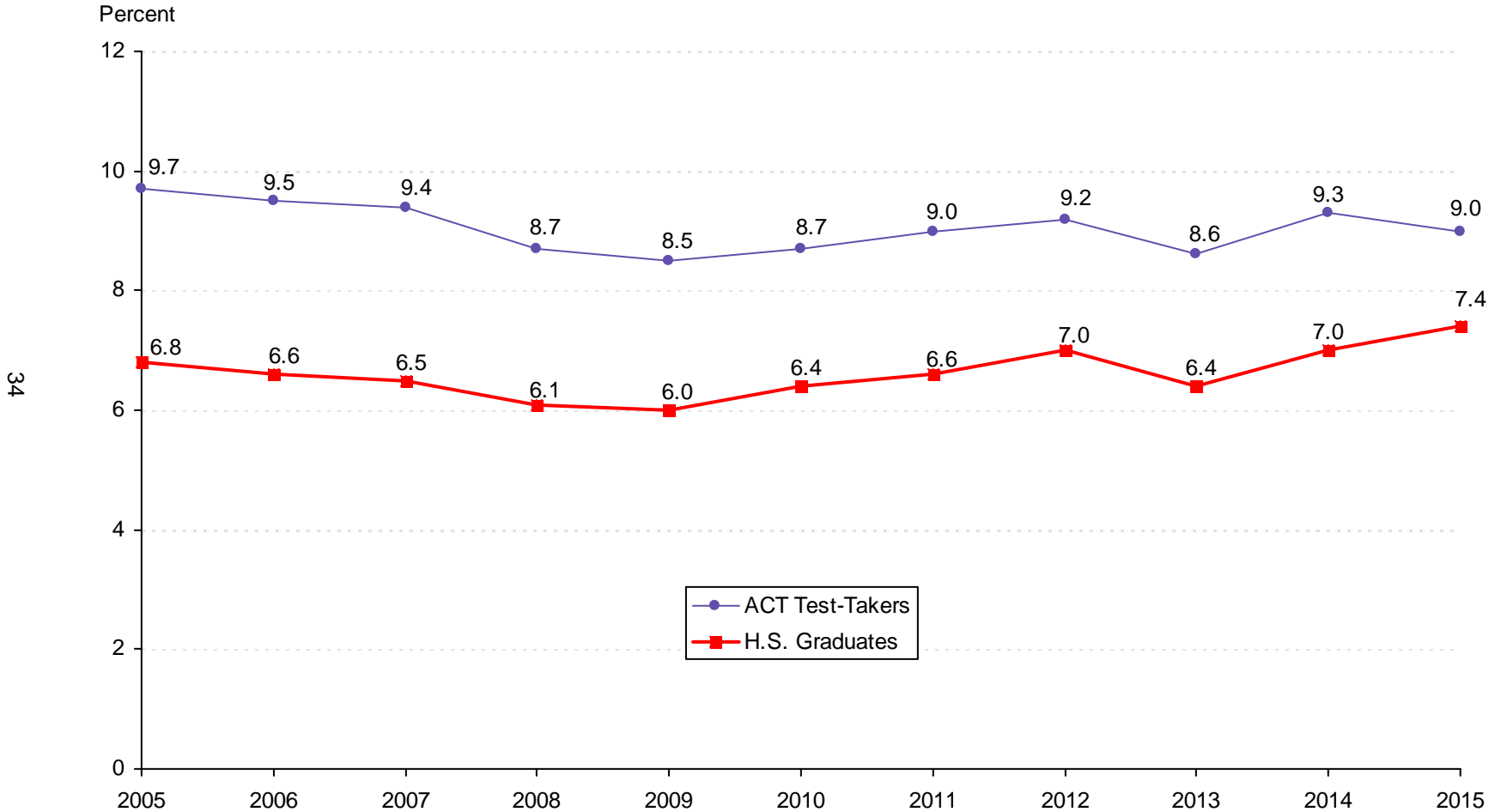
STILLWATER AND TULSA CAMPUS ENROLLMENT

OKLAHOMA STATE UNIVERSITY

FALL SEMESTERS 1995 THROUGH 2015



OKLAHOMA STATE UNIVERSITY SHARE OF THE MARKET
RATIO OF BEGINNING RESIDENT FRESHMEN
TO OKLAHOMA HIGH SCHOOL SPRING GRADUATES AND ACT TEST-TAKERS
OKLAHOMA STATE UNIVERSITY
FALL SEMESTERS 2005 THROUGH 2015



Note: Total Oklahoma high school graduates for 2015 = 37,280; total Oklahoma ACT test-takers = 30,844. The beginning resident freshman count for all years include OSU-Tulsa students, but excludes non-degree-seeking and first time concurrent high school resident students. (See Page 43).

Source: *Oklahoma High School Graduates-Projections*, Oklahoma State Regents for Higher Education, and *ACT Profile Report – State, Graduating Class 2015, Oklahoma*.

**ENROLLMENT BY TYPE OF ADMISSION
OKLAHOMA STATE UNIVERSITY
FALL SEMESTERS 2005 THROUGH 2015**

Fall	New Freshmen*	% Inc / Dec	Continuing	% Inc / Dec	Readmission	% Inc / Dec	New Transfer	% Inc / Dec	Non-Degree	% Inc / Dec	Concurrent	% Inc / Dec	Total	% Inc / Dec
2005	3,315	1.6%	16,180	-0.6%	780	-10.8%	2,754	-0.4%	80	-8.0%	56	-16.4%	23,165	-0.7%
2006	3,236	-2.4%	16,189	0.1%	648	-16.9%	2,789	1.3%	57	-28.8%	80	42.9%	22,999	-0.7%
2007	3,209	-0.8%	16,016	-1.1%	590	-9.0%	2,715	-2.7%	69	21.1%	94	17.5%	22,693	-1.3%
2008	3,073	-4.2%	15,812	-1.3%	621	5.3%	2,658	-2.1%	192	178.3%	93	-1.1%	22,449	-1.1%
2009	3,148	2.4%	15,564	-1.6%	709	14.2%	2,852	7.3%	164	-14.6%	79	-15.1%	22,516	0.3%
2010	3,554	12.9%	15,899	2.2%	508	-28.3%	3,005	5.4%	124	-24.4%	88	11.4%	23,178	2.9%
2011	3,896	9.6%	16,315	2.6%	510	0.4%	2,914	-3.0%	146	17.7%	101	14.8%	23,882	3.0%
2012	4,289	10.1%	16,986	4.1%	524	2.7%	3,175	9.0%	130	-11.0%	88	-12.9%	25,192	5.5%
2013	3,872	-9.7%	17,947	5.7%	492	-6.1%	3,046	-4.1%	140	7.7%	93	5.7%	25,590	1.6%
2014	4,057	4.8%	17,948	0.0%	484	-1.6%	2,787	-8.5%	171	22.1%	69	-25.8%	25,516	-0.3%
2015	4,177	3.0%	17,898	-0.3%	416	-14.0%	2,688	-3.6%	205	19.9%	89	29.0%	25,473	-0.2%

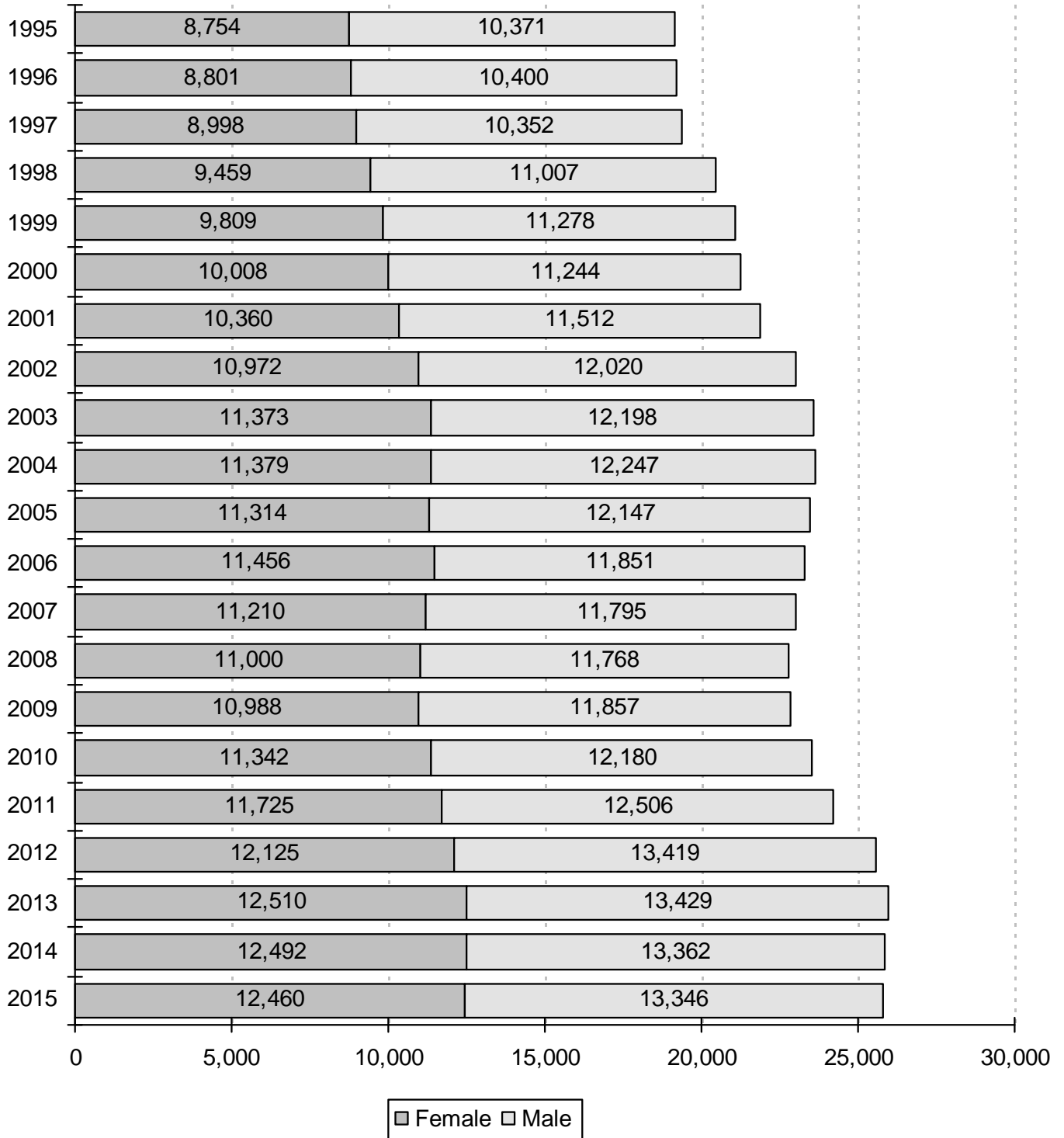
Note: This table excludes 333 professional students for Fall 2015, but does include OSU-Tulsa figures for all years listed.

The percentage increase or decrease in enrollment between two semesters is shown in the "% Inc / Dec" column. Example:
There was a 5.7% increase in enrollment of continuing students from Fall 2012 to Fall 2013.

* New freshmen counts exclude concurrent high school students and non-degree-seeking students for all years listed.

Student Profile books prior to Fall 2006 include new concurrent high school students in the new freshmen counts.

ENROLLMENT BY GENDER
OKLAHOMA STATE UNIVERSITY
FALL SEMESTERS 1995 THROUGH 2015



Note: This chart includes professional students and OSU-Tulsa students for all years listed. Hence, these figures will not match the figures in the Student Profile books prior to 2003.

**ENROLLMENT BY CLASSIFICATION
OKLAHOMA STATE UNIVERSITY
FALL SEMESTERS 1995 THROUGH 2015**

Year	Freshmen	Sophomores	Juniors	Seniors	Special Undergrads	Undergrad Total	Graduates	Professional	On-Campus Total	Off-Campus OSU-T & TAFB	Grand Total
1995	3,446	3,040	3,646	4,273	34	14,439	3,664	275	18,378	747	19,125
1996	3,427	3,226	3,508	4,311	47	14,519	3,658	284	18,461	740	19,201
1997	3,378	3,308	3,683	4,168	68	14,605	3,625	289	18,519	831	19,350
1998	3,535	3,464	3,874	4,379	70	15,322	3,902	297	19,521	945	20,466
1999	4,068	3,543	3,923	4,235	45	15,814	3,616	294	19,724	1,363	21,087
2000	4,148	3,765	3,834	4,339	46	16,132	3,436	292	19,860	1,392	21,252
2001	4,361	3,886	3,925	4,234	51	16,457	3,526	289	20,272	1,600	21,872
2002	4,473	3,944	4,115	4,458	49	17,039	3,818	292	21,149	1,843	22,992
2003	4,649	4,083	4,197	4,548	14	17,491	3,816	297	21,604	1,967	23,571
2004	4,462	4,056	4,266	4,604	105	17,493	3,787	296	21,576	2,050	23,626
2005	4,325	4,035	4,391	4,736	97	17,584	3,522	296	21,402	2,059	23,461
2006	4,143	4,099	4,383	4,658	109	17,392	3,535	308	21,235	2,072	23,307
2007	4,034	3,977	4,262	4,602	133	17,008	3,636	312	20,956	2,049	23,005
2008	3,803	3,795	4,280	4,517	241	16,636	3,801	319	20,756	2,012	22,768
2009	3,905	3,598	4,134	4,653	210	16,500	4,002	329	20,831	2,014	22,845
2010	4,289	3,700	4,123	4,709	186	17,007	4,412	344	21,763	1,759	23,522
2011	4,626	3,986	4,288	4,721	229	17,850	4,212	349	22,411	1,820	24,231
2012	5,088	4,237	4,611	4,862	202	19,000	4,370	352	23,722	1,822	25,544
2013	4,591	4,617	4,699	5,296	198	19,401	4,466	349	24,216	1,723	25,939
2014	4,790	4,426	5,092	5,261	211	19,780	4,177	338	24,295	1,559	25,854
2015	4,956	4,368	4,994	5,621	268	20,207	4,011	333	24,551	1,255	25,806

Note: Effective 2000, Off-Campus OSU-T & Tinker Air Force Base column reflects OSU-Tulsa enrollment only.

**ENROLLMENT BY ETHNICITY
OKLAHOMA STATE UNIVERSITY
FALL SEMESTERS 2005 THROUGH 2015**

Fall Semester	White		African American		Native American		Hispanic		Asian		Pacific Islander		Multiracial		International		Unknown		Total
	Number	%	Number	%	Number	%	Number	%	Number	%	Number	%	Number	%	Number	%	Number	%	
2005	17,894	76.3%	917	3.9%	1,973	8.4%	523	2.2%	388	1.7%	N/A	N/A	N/A	N/A	1,766	7.5%	N/A	N/A	23,461
2006	17,769	76.2%	959	4.1%	1,990	8.5%	533	2.3%	411	1.8%	N/A	N/A	N/A	N/A	1,645	7.1%	N/A	N/A	23,307
2007	17,443	75.8%	923	4.0%	1,993	8.7%	525	2.3%	388	1.7%	N/A	N/A	N/A	N/A	1,733	7.5%	N/A	N/A	23,005
2008	17,172	75.4%	930	4.1%	1,964	8.6%	566	2.5%	386	1.7%	N/A	N/A	N/A	N/A	1,750	7.7%	N/A	N/A	22,768
2009	17,297	75.7%	929	4.1%	1,915	8.4%	555	2.4%	363	1.6%	N/A	N/A	N/A	N/A	1,786	7.8%	N/A	N/A	22,845
2010	17,599	74.8%	1,029	4.4%	2,032	8.6%	594	2.5%	399	1.7%	N/A	N/A	N/A	N/A	1,869	7.9%	N/A	N/A	23,522
2011*	17,109	70.6%	1,066	4.4%	1,506	6.2%	930	3.8%	366	1.5%	4	0.0%	1,301	5.4%	1,661	6.9%	288	1.2%	24,231
2012	17,976	70.4%	1,144	4.5%	1,403	5.5%	1,039	4.1%	420	1.6%	7	0.0%	1,551	6.1%	1,758	6.9%	246	1.0%	25,544
2013	18,015	69.5%	1,157	4.5%	1,394	5.4%	1,151	4.4%	424	1.6%	9	0.0%	1,638	6.3%	1,941	7.5%	210	0.8%	25,939
2014	17,703	68.5%	1,138	4.4%	1,238	4.8%	1,335	5.2%	417	1.6%	19	0.1%	1,872	7.2%	1,959	7.6%	173	0.7%	25,854
2015	17,265	66.9%	1,164	4.5%	1,138	4.4%	1,504	5.8%	445	1.7%	29	0.1%	2,084	8.1%	1,998	7.7%	179	0.7%	25,806

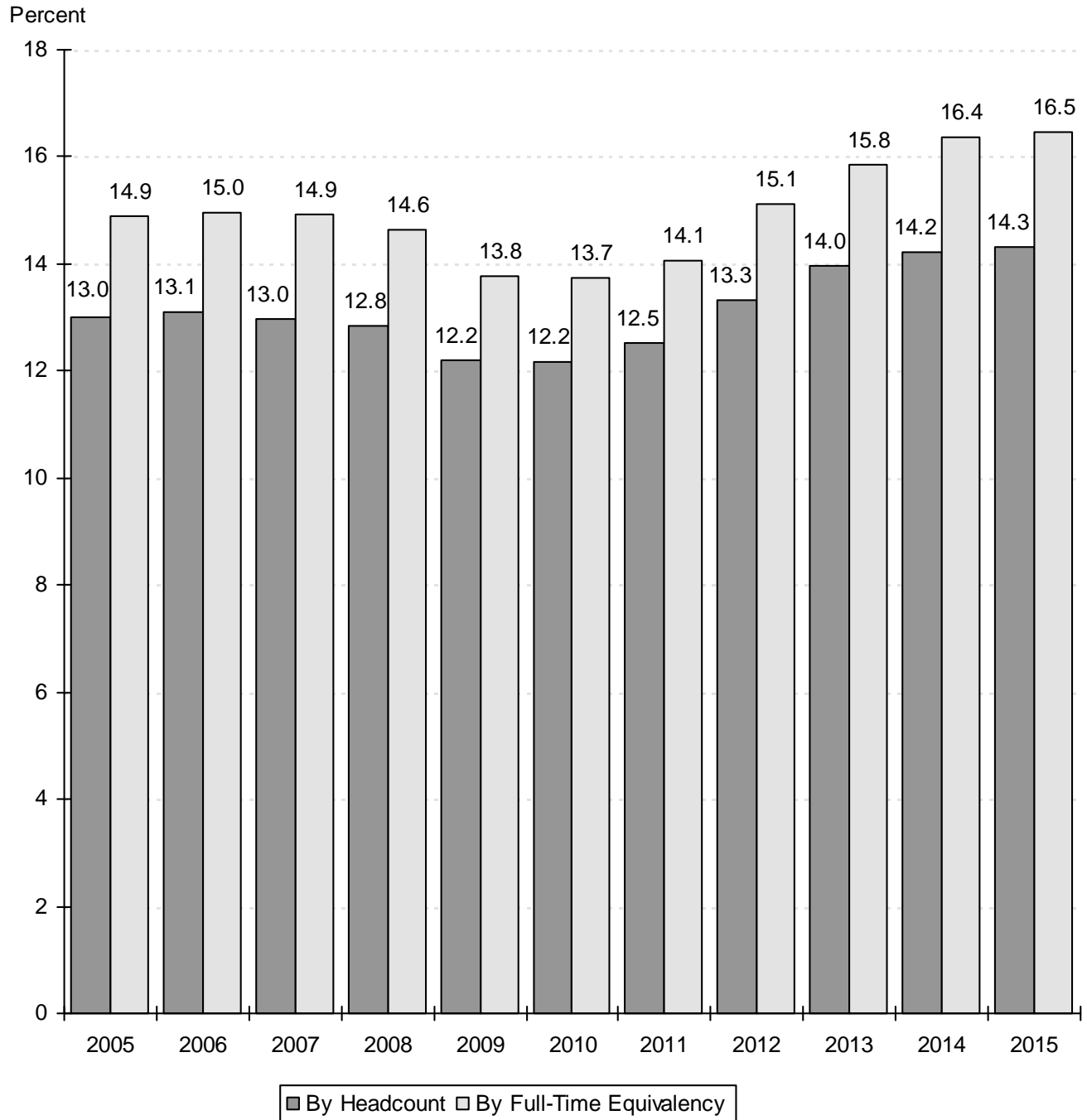
Note: This table includes professional students and OSU-Tulsa students for all years listed.

* Starting from 2011, ethnicity codes were expanded to include Pacific Islanders, Multiracial and Unknown.

**OSU ENROLLMENT AS A PERCENT OF TOTAL ENROLLMENT
IN THE OKLAHOMA STATE SYSTEMS (PUBLIC)**

OKLAHOMA STATE UNIVERSITY

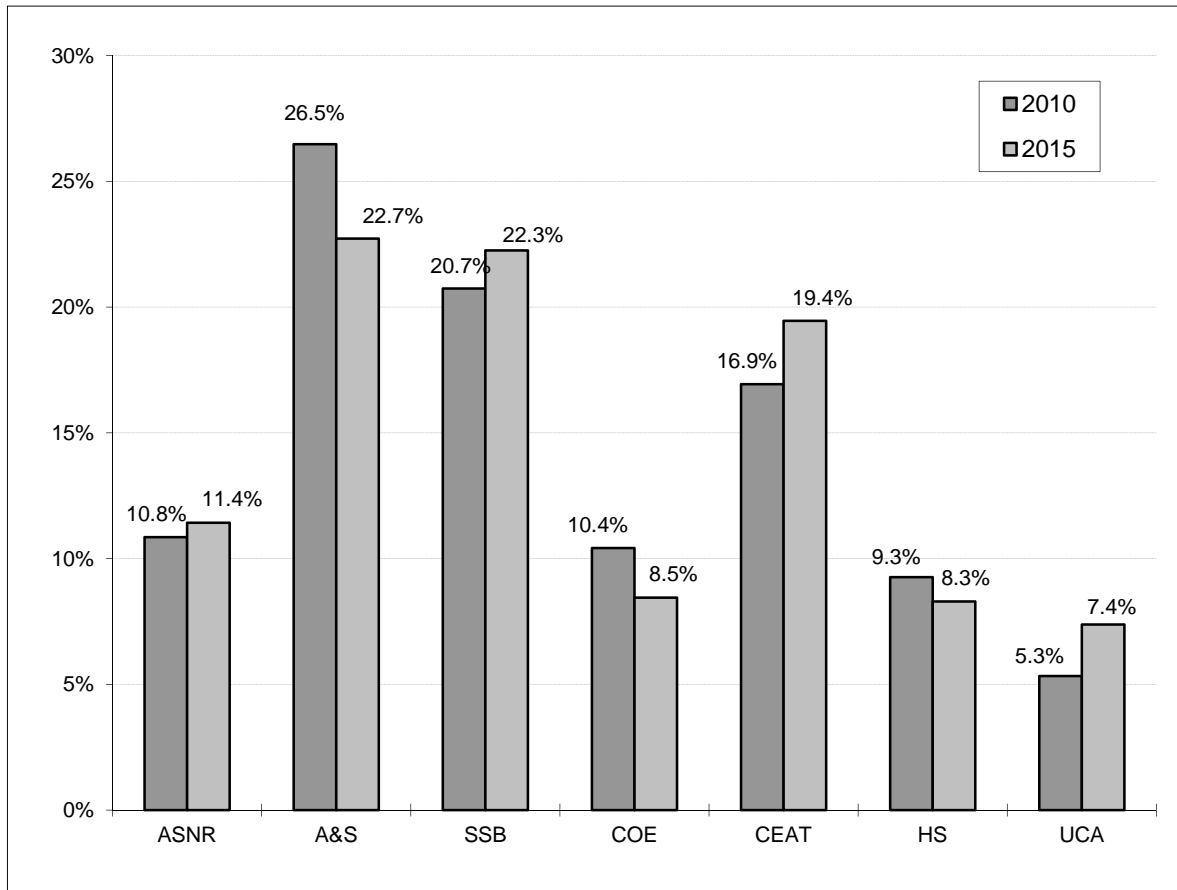
FALL SEMESTERS 2005 THROUGH 2015



Source: Preliminary Enrollment Report for Oklahoma Higher Education Fall 2015,
Oklahoma State Regents for Higher Education.

Note: Total Enrollment in the Oklahoma State Systems (Public) excludes interns and residents. Student Profile books prior to Fall 2008 included interns and residents in the total headcount enrollment.

**COMPARISON OF DISTRIBUTION OF UNDERGRADUATE MAJORS BY COLLEGE
OKLAHOMA STATE UNIVERSITY
FALL SEMESTERS 2010 AND 2015**



**UNDERGRADUATE MAJORS BY COLLEGE
OKLAHOMA STATE UNIVERSITY
FALL SEMESTERS 2010 THROUGH 2015**

Year	Ag. Sci. & Nat. Res.	Arts & Sciences	Spears Sch. of Bus.	Education	Engr., Arch., & Tech.	Human Sciences	Univer. Coll. Advising	Total
2010	1,974	4,817	3,773	1,896	3,081	1,685	971	18,197
2011	2,093	4,779	3,895	1,870	3,187	1,739	1,446	19,009
2012	2,140	4,884	4,124	1,938	3,484	1,816	1,744	20,130
2013	2,260	4,772	4,362	1,896	3,694	1,817	1,692	20,493
2014	2,315	4,868	4,573	1,867	3,856	1,784	1,558	20,821
2015	2,408	4,782	4,683	1,779	4,093	1,747	1,554	21,046

Note: Students are reported in the college in which they are enrolled. This page includes students enrolled at OSU-Tulsa.

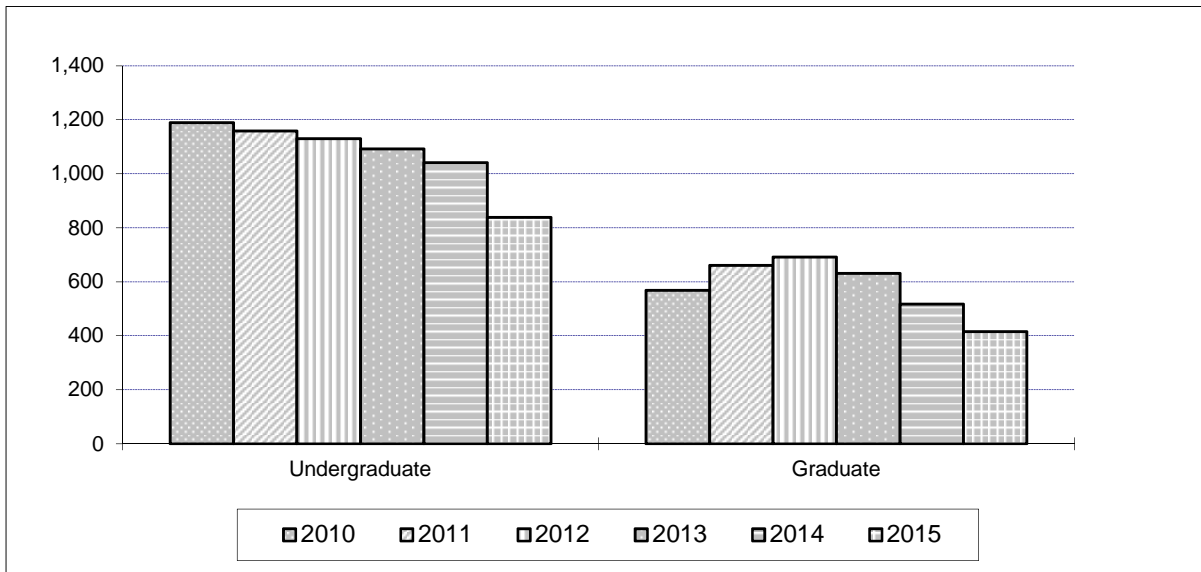
**ENROLLMENT CHANGES
OKLAHOMA STATE UNIVERSITY
FALL SEMESTERS 2010 AND 2015**

	2010	2015	% Change
<u>UNDERGRADUATE MAJORS</u>			
Agricultural Sciences & Natural Resources	1,974	2,408	22.0%
Arts & Sciences	4,817	4,782	-0.7%
Spears School of Business	3,773	4,683	24.1%
Education	1,896	1,779	-6.2%
Engineering, Architecture, & Technology	3,081	4,093	32.8%
Human Sciences	1,685	1,747	3.7%
University College Advising	971	1,554	60.0%
<u>AGE</u>			
18 & Under	2,034	2,384	17.2%
19	3,158	3,801	20.4%
20	2,920	3,812	30.5%
21	3,131	3,863	23.4%
22	2,762	2,983	8.0%
23-29	6,228	5,952	-4.4%
30-39	2,039	1,991	-2.4%
40 & Over	1,250	1,020	-18.4%
<u>CLASSIFICATION</u>			
New Freshmen	3,519	4,110	16.8%
Other Freshmen	773	849	9.8%
Sophomores*	3,777	4,424	17.1%
Juniors*	4,565	5,273	15.5%
Seniors	5,351	6,096	13.9%
Specials	617	523	-15.2%
Graduates	4,576	4,198	-8.3%
Professional	344	333	-3.2%
<u>RESIDENT STATUS</u>			
In-State	16,951	16,992	0.2%
Out-of-State	4,702	6,822	45.1%
International	1,869	1,992	6.6%
<u>ETHNICITY</u>			
White	17,599	17,265	-1.9%
African American	1,029	1,164	13.1%
Native American	2,032	1,138	-44.0%
Hispanic	594	1,504	153.2%
Asian	399	445	11.5%
Pacific Islander	N/A	29	N/A
Multiracial	N/A	2,084	N/A
International	1,869	1,998	6.9%
Unknown	N/A	179	N/A
<u>GENDER</u>			
Female	11,342	12,460	9.9%
Male	12,180	13,346	9.6%
OVERALL ENROLLMENT	23,522	25,806	9.7%

Note: This table includes professional students and OSU-Tulsa students.

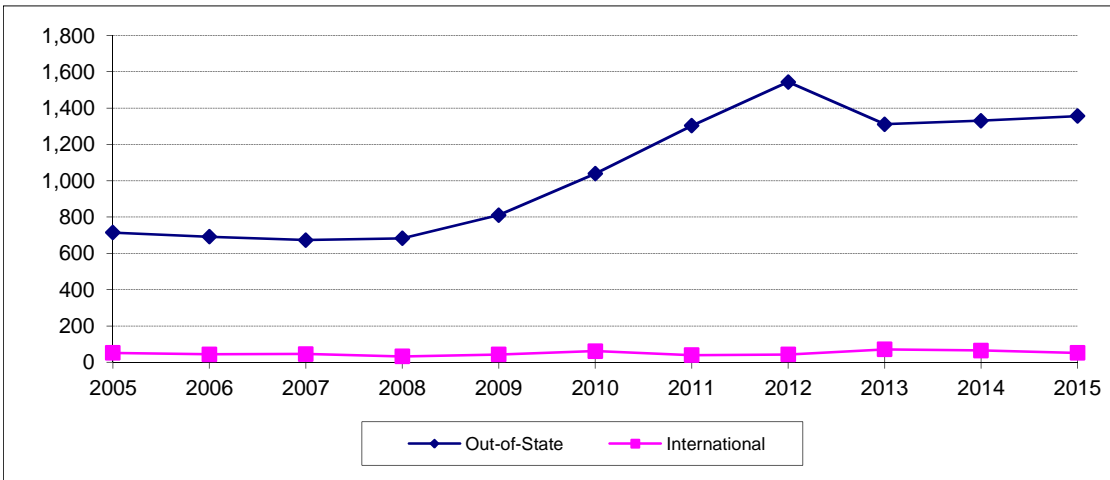
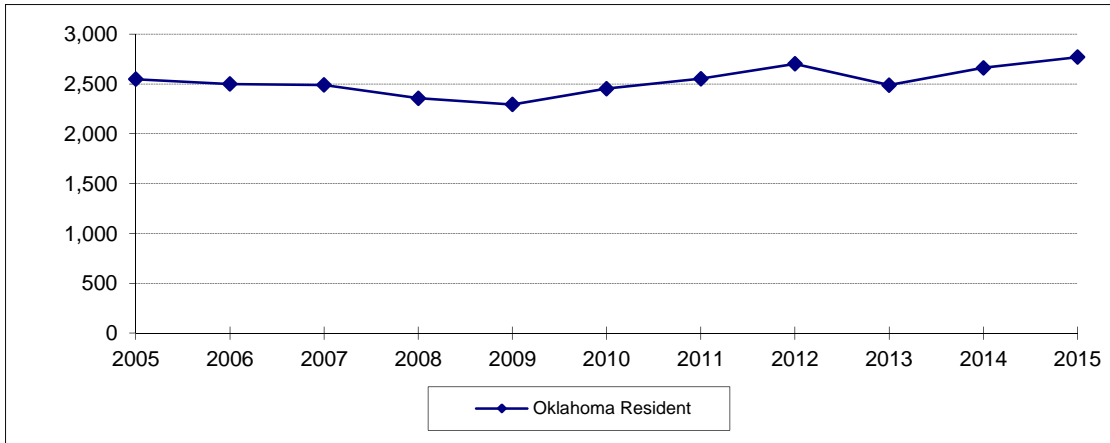
* For 2015, 63 sophomores and four juniors are in their first year of college, thus listed in other tables as new freshmen. In 2010 there were 32 sophomores and 3 juniors with the same designation.

**ENROLLMENT CHANGES
OKLAHOMA STATE UNIVERSITY AT TULSA
FALL SEMESTERS 2010 THROUGH 2015**



Classification	2010	2011	2012	2013	2014	2015	% Change 2014 to 2015
Undergraduate	1,190	1,159	1,130	1,092	1,041	839	-19.4%
Freshman	3	4	3	4	4	3	-25.0%
Sophomore	77	67	75	74	72	56	-22.2%
Junior	442	405	416	393	366	279	-23.8%
Senior	642	665	620	586	570	475	-16.7%
Special	26	18	16	35	29	26	-10.3%
Graduate	569	661	692	631	518	416	-19.7%
Special	119	121	131	93	75	63	-16.0%
Master	329	418	452	421	344	266	-22.7%
Doctorate	121	122	109	117	99	87	-12.1%
Grand Total	1,759	1,820	1,822	1,723	1,559	1,255	-19.5%

**NEW FRESHMEN ENROLLMENT BY RESIDENCY
OKLAHOMA STATE UNIVERSITY
FALL SEMESTERS 2005 THROUGH 2015**



Fall Semester	Oklahoma Resident	Out-of-State	International	Total
2005	2,548	715	52	3,315
2006	2,500	692	44	3,236
2007	2,490	673	46	3,209
2008	2,357	683	33	3,073
2009	2,294	811	43	3,148
2010	2,453	1,039	62	3,554
2011	2,553	1,303	40	3,896
2012	2,702	1,544	43	4,289
2013	2,489	1,311	72	3,872
2014	2,661	1,331	65	4,057
2015	2,769	1,356	52	4,177

Note: This table includes students at OSU-Tulsa, but does not include non-degree-seeking new freshmen and new concurrent high school students.
Student Profile books prior to Fall 2006 included new concurrent high school students on this page.

