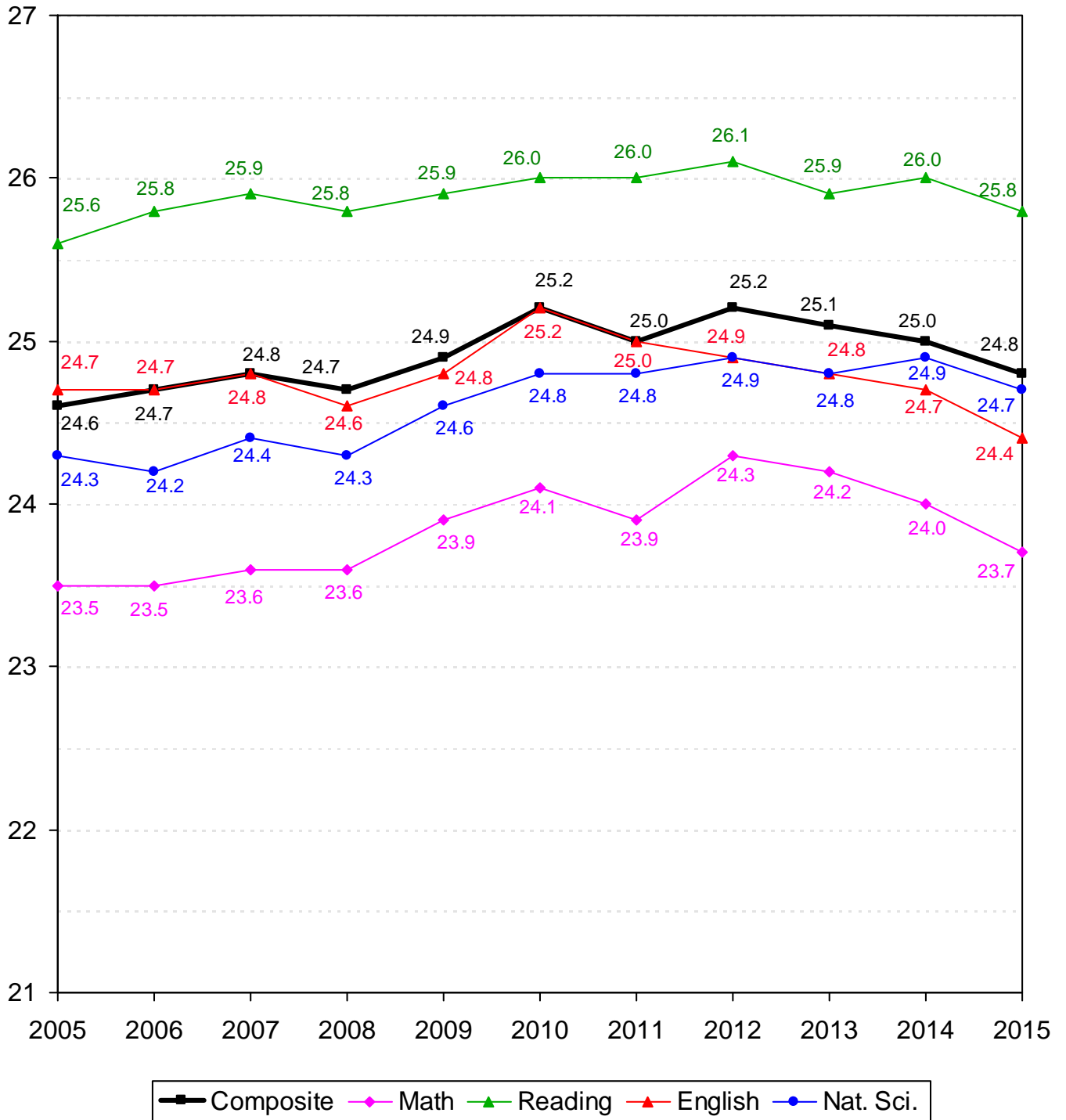


ACADEMIC INFORMATION

TEN-YEAR COMPARISON OF ACT SCORES FOR NEW FRESHMEN
OKLAHOMA STATE UNIVERSITY
FALL SEMESTERS 2005 THROUGH 2015



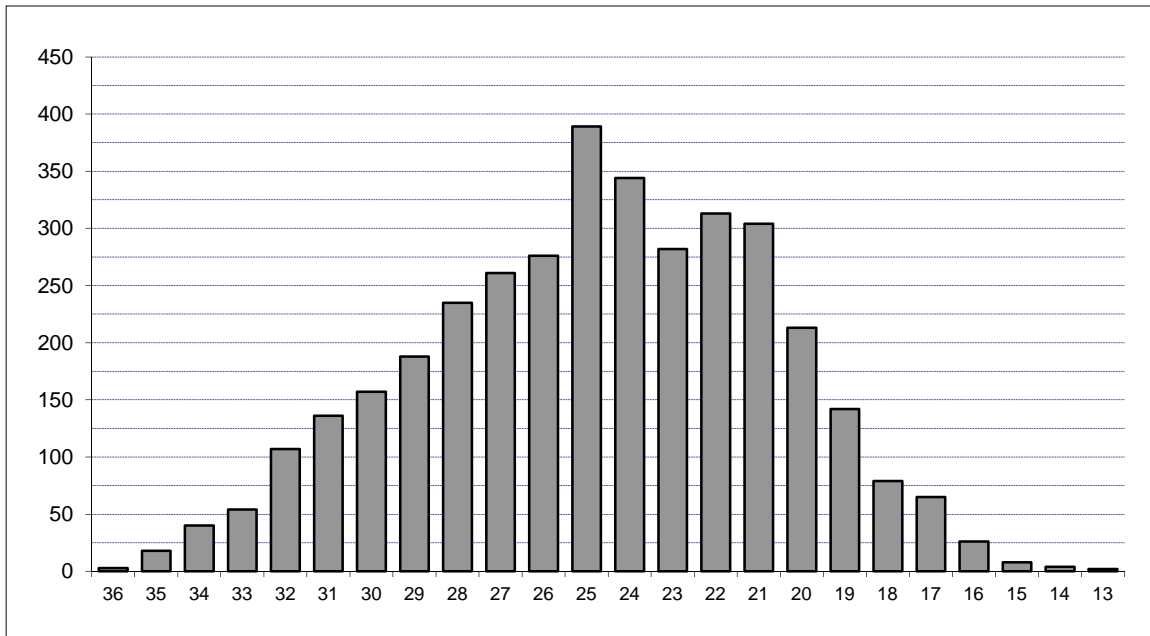
Note: Averages reflect the highest value for each subscore that a student received. ACT composite scores are the average of the highest of each subscore received.

**COMPOSITE ACT AND SAT AVERAGES OF NEW FRESHMEN BY COLLEGE
OKLAHOMA STATE UNIVERSITY
FALL SEMESTER 2015**

College	ACT		SAT	
	Count	Composite	Count	Composite
Ag. Sciences & Natural Res.	440	25.5	46	1,100
Arts & Sciences	805	25.5	86	1,147
Spears School of Business	529	24.9	88	1,126
Education	203	23.9	28	1,082
Engineering & Architecture	729	27.3	101	1,183
Div. of Technology	41	25.7	6	1,230
Human Sciences	223	24.1	24	1,063
Overall College Average	2,970	25.6	379	1,137
University College Advising	676	21.1	123	940
Overall Average	3,646	24.8	502	1,089

Note: Composite scores in this table are calculated using the highest subscores obtained for each student. If students have taken both the ACT and the SAT, only the higher score is reported.

**DISTRIBUTION OF NEW FRESHMEN BY COMPOSITE ACT SCORE
OKLAHOMA STATE UNIVERSITY
FALL SEMESTER 2015**



Composite ACT Score	Female	Male	Total	Percent	Cumulative Percent
36	2	1	3	0.08%	0.08%
35	4	14	18	0.49%	0.58%
34	13	27	40	1.10%	1.67%
33	21	33	54	1.48%	3.15%
32	51	56	107	2.93%	6.09%
31	62	74	136	3.73%	9.82%
30	67	90	157	4.31%	14.13%
29	81	107	188	5.16%	19.28%
28	127	108	235	6.45%	25.73%
27	133	128	261	7.16%	32.89%
26	148	128	276	7.57%	40.46%
25	189	200	389	10.67%	51.12%
24	171	173	344	9.43%	60.56%
23	172	110	282	7.73%	68.29%
22	172	141	313	8.58%	76.88%
21	196	108	304	8.34%	85.22%
20	126	87	213	5.84%	91.06%
19	86	56	142	3.89%	94.95%
18	43	36	79	2.17%	97.12%
17	47	18	65	1.78%	98.90%
16	18	8	26	0.71%	99.62%
15	3	5	8	0.22%	99.84%
14	2	2	4	0.11%	99.95%
13	2	0	2	0.05%	100.00%
Total	1,936	1,710	3,646	100.0%	100.00%

Note: ACT scores are only included in this table if they represent the highest test score available for the student. If the student's SAT score (converted to an ACT equivalent) is higher, then the ACT score is not included here.

**ACT AND SAT AVERAGES OF NEW FRESHMEN BY ETHNICITY AND GENDER
OKLAHOMA STATE UNIVERSITY
FALL SEMESTER 2015**

Ethnicity	ACT		SAT	
	Count	Composite	Count	Composite
White	2,551	25.3	326	1,115
African American	165	20.9	49	937
Native American	165	23.7	6	1,097
Hispanic	277	23.6	68	1,063
Asian	58	25.1	4	1,193
Pacific Islander	6	25.8	1	1,200
Multiracial	415	24.4	29	1,097
International	6	25.7	18	1,076
Unknown	3	21.0	1	1,220
Gender				
Female	1,936	24.3	210	1,052
Male	1,710	25.3	292	1,115
Total	3,646	24.8	502	1,089

Note: Composite scores in this table are calculated using the highest subscores obtained for each student. If students have taken both the ACT and the SAT, only the higher score is reported.

**OKLAHOMA HIGH SCHOOL ACT PARTICIPATION STATISTICS
OKLAHOMA STATE UNIVERSITY
2010 THROUGH 2015**

	2010		2011		2012		2013		2014		2015	
High School Graduates in Oklahoma ¹	39,808		37,719		39,085		38,616		37,748		37,280	
Number of Oklahoma H.S. Students Taking ACT ^{2*}	28,343		28,223		29,342		28,988		28,682		30,844	
Total ACT Scores Received by OSU ^{2**}	7,946		7,836		8,121		7,808		7,536		7,951	
1st Choice / % of Scores Received	2,908	36.6%	2,983	38.1%	3,227	39.7%	3,061	39.2%	2,984	39.6%	3,202	40.3%
2nd - 6th Choices / % of Scores Received	5,038	63.4%	4,853	61.9%	4,894	60.3%	4,747	60.8%	4,552	60.4%	4,749	59.7%
Applications Received by OSU	8,696		9,914		12,056		11,064		12,281		12,501	
New Freshmen Accepted by OSU	7,079		8,099		9,351		8,411		9,192		9,392	
% of Applications Received	81.4%		81.7%		77.6%		76.0%		74.8%		75.1%	
New Freshmen Enrolled at OSU	3,554		3,896		4,289		3,872		4,057		4,177	
% of Freshmen Accepted	50.2%		48.1%		45.9%		46.0%		44.1%		44.5%	

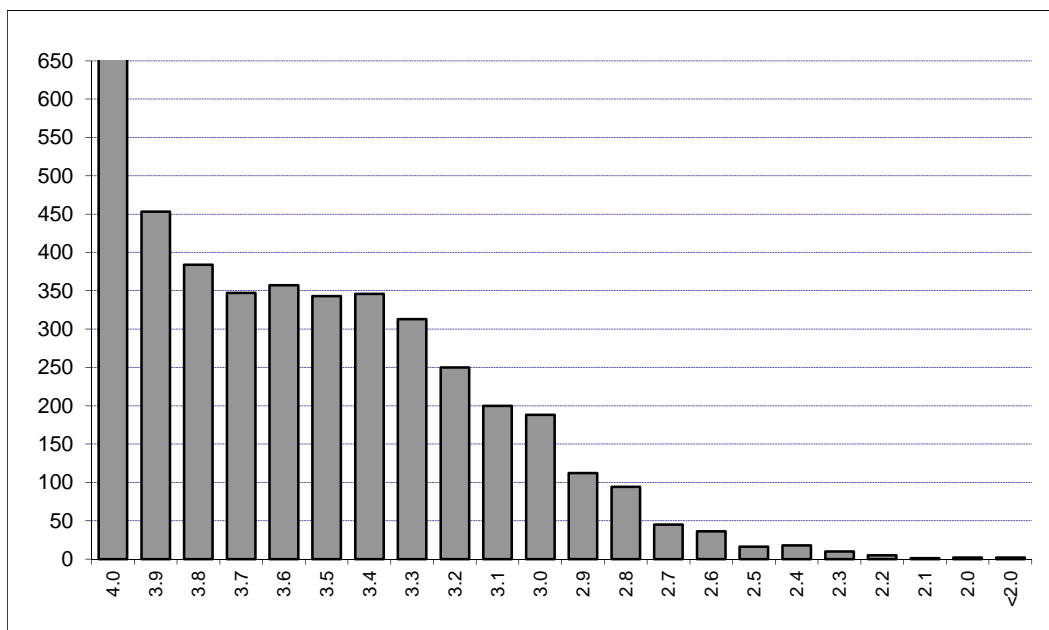
¹Source - Oklahoma High School Graduates - Projections, Oklahoma State Regents for Higher Education (Actuals through 2012, projections for 2013 through 2015)

²Source - ACT Profile Report - State, Graduating Class 2015, Oklahoma

*This includes only Oklahoma high school graduates who took the ACT prior to graduation in the year indicated.

**This includes only those students eligible for college enrollment in the fall semester of the year indicated and does not include multiple ACT scores for any one student. Student Profiles prior to Fall 2003 may include multiple ACT scores per person.

**DISTRIBUTION OF FRESHMEN HIGH SCHOOL GRADE POINT AVERAGES
OKLAHOMA STATE UNIVERSITY
FALL SEMESTER 2015**

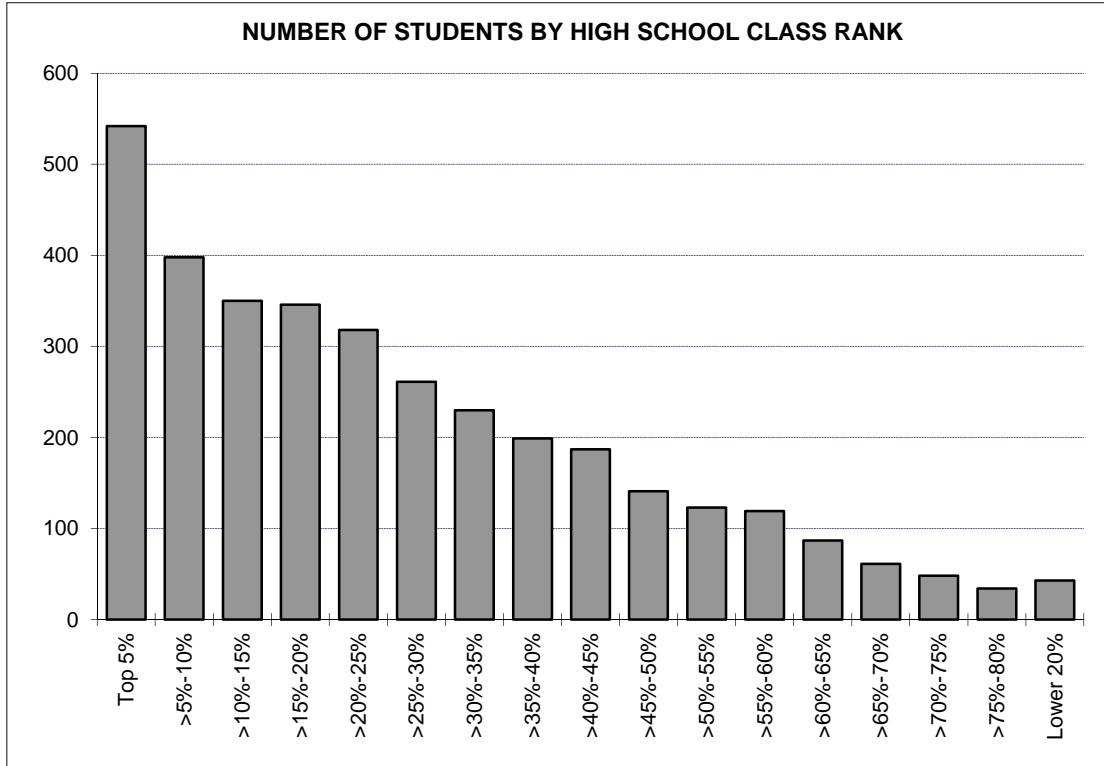


GPA	Number	Cumulative Number	Percent	Cumulative Percent
4.0	654	654	15.66%	15.66%
3.9	453	1,107	10.85%	26.51%
3.8	384	1,491	9.20%	35.70%
3.7	347	1,838	8.31%	44.01%
3.6	357	2,195	8.55%	52.56%
3.5	343	2,538	8.21%	60.78%
3.4	346	2,884	8.29%	69.06%
3.3	313	3,197	7.50%	76.56%
3.2	250	3,447	5.99%	82.54%
3.1	200	3,647	4.79%	87.33%
3.0	188	3,835	4.50%	91.83%
2.9	112	3,947	2.68%	94.52%
2.8	94	4,041	2.25%	96.77%
2.7	45	4,086	1.08%	97.84%
2.6	36	4,122	0.86%	98.71%
2.5	16	4,138	0.38%	99.09%
2.4	18	4,156	0.43%	99.52%
2.3	10	4,166	0.24%	99.76%
2.2	5	4,171	0.12%	99.88%
2.1	1	4,172	0.02%	99.90%
2.0	2	4,174	0.05%	99.95%
<2.0	2	4,176	0.05%	100.0%
Total	4,176	4,176	100.0%	100.0%

Note: One new freshman (including international, home schooled, and adult admission students) did not supply a high school GPA.

The average high school GPA reported was 3.52. The average high school core GPA calculated was 3.60.

**RANK IN HIGH SCHOOL CLASS BY NUMBER OF NEW FRESHMEN & PERCENT IN EACH RANK
OKLAHOMA STATE UNIVERSITY
FALL SEMESTER 2015**

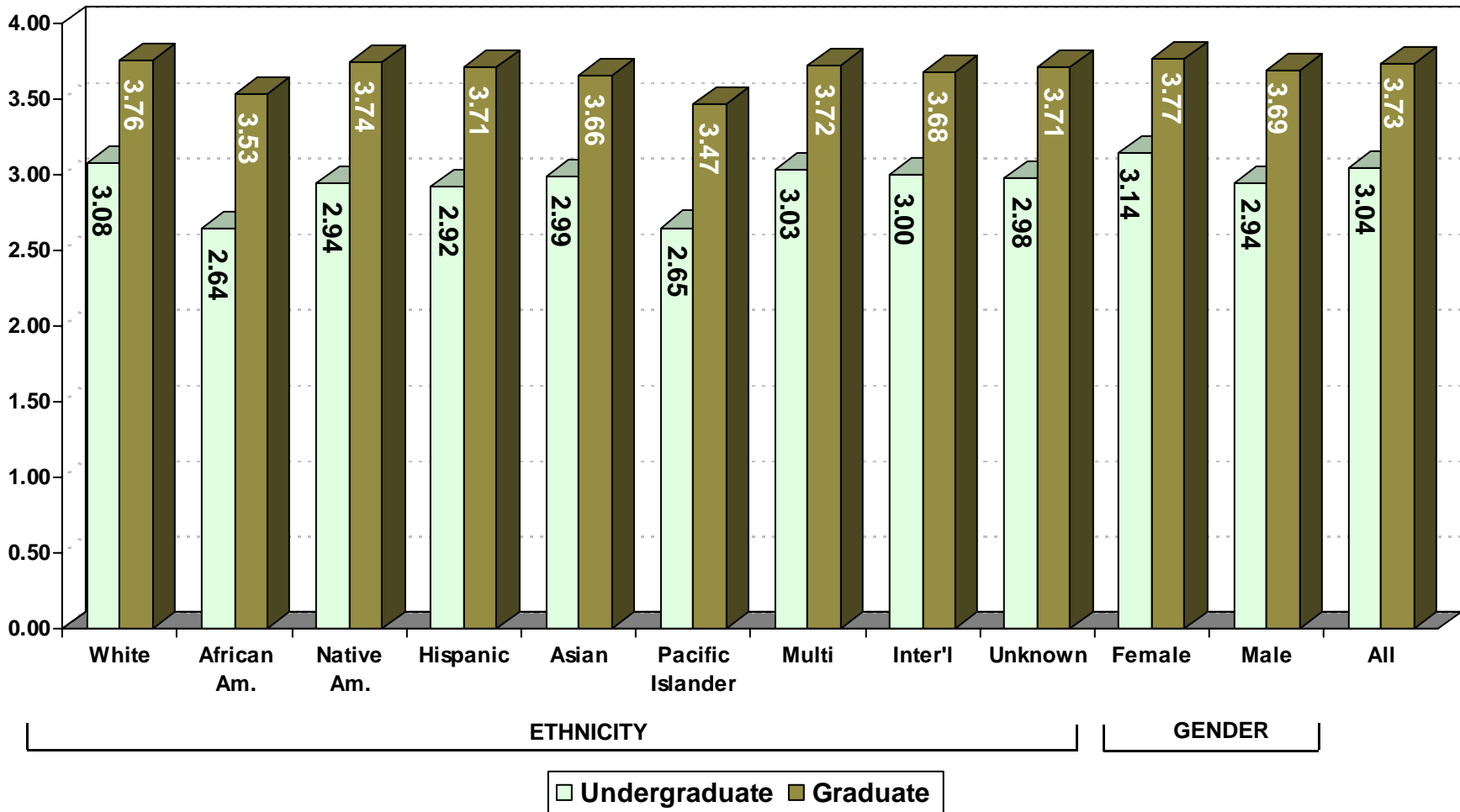


Rank	Number	Cumulative Number	Percent	Cumulative Percent
Top 5%	542	542	15.54%	15.54%
>5%-10%	398	940	11.41%	26.96%
>10%-15%	350	1,290	10.04%	36.99%
>15%-20%	346	1,636	9.92%	46.92%
>20%-25%	318	1,954	9.12%	56.04%
>25%-30%	261	2,215	7.48%	63.52%
>30%-35%	230	2,445	6.60%	70.12%
>35%-40%	199	2,644	5.71%	75.82%
>40%-45%	187	2,831	5.36%	81.19%
>45%-50%	141	2,972	4.04%	85.23%
>50%-55%	123	3,095	3.53%	88.76%
>55%-60%	119	3,214	3.41%	92.17%
>60%-65%	87	3,301	2.49%	94.67%
>65%-70%	61	3,362	1.75%	96.42%
>70%-75%	48	3,410	1.38%	97.79%
>75%-80%	34	3,444	0.98%	98.77%
Lower 20%	43	3,487	1.23%	100.0%

Note: 690 new freshmen (including international, home schooled, and adult admission students) did not supply a high school rank.

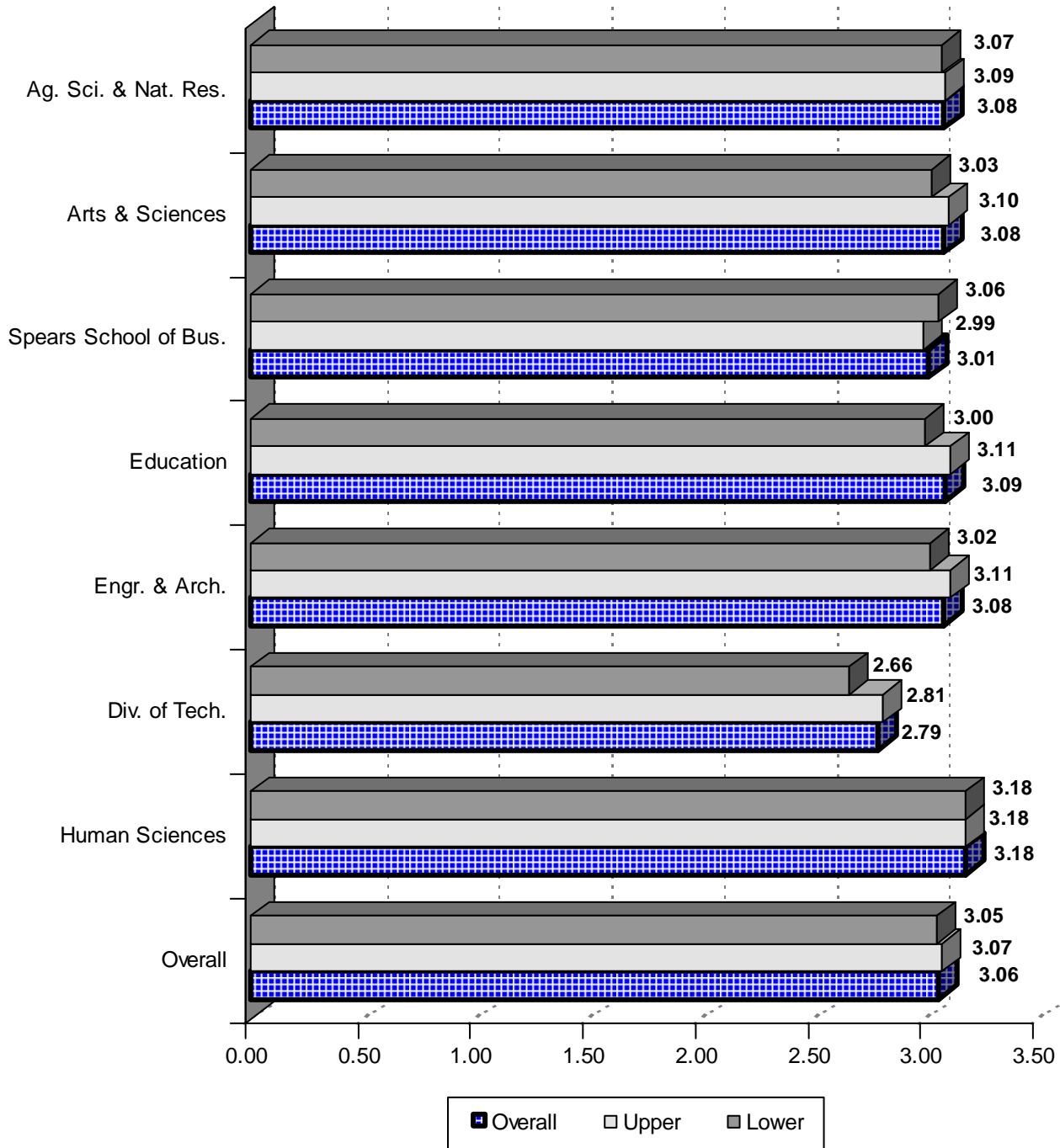
AVERAGE CUMULATIVE GRADE POINT AVERAGE BY ETHNICITY AND GENDER
OKLAHOMA STATE UNIVERSITY
FALL SEMESTER 2015

51



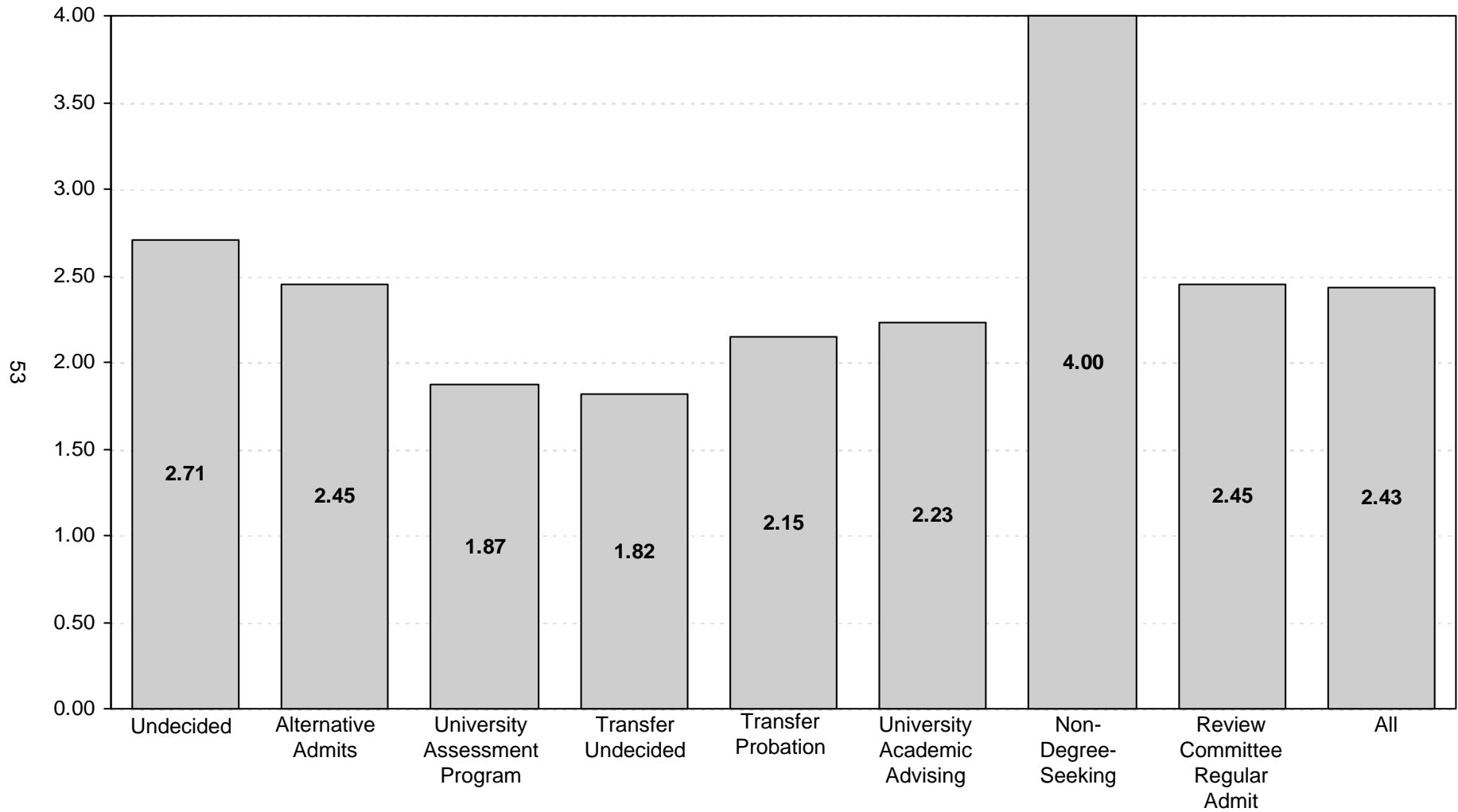
Note: The data presented above includes 15,067 undergraduates and 3,177 graduates for whom a cumulative GPA was reported. This chart excludes professional students, new transfers, and new freshmen, but includes students at OSU-Tulsa.

**AVERAGE CUMULATIVE GRADE POINT AVERAGE
OF UNDERGRADUATE STUDENTS BY COLLEGE AND DIVISION
OKLAHOMA STATE UNIVERSITY
FALL SEMESTER 2015**



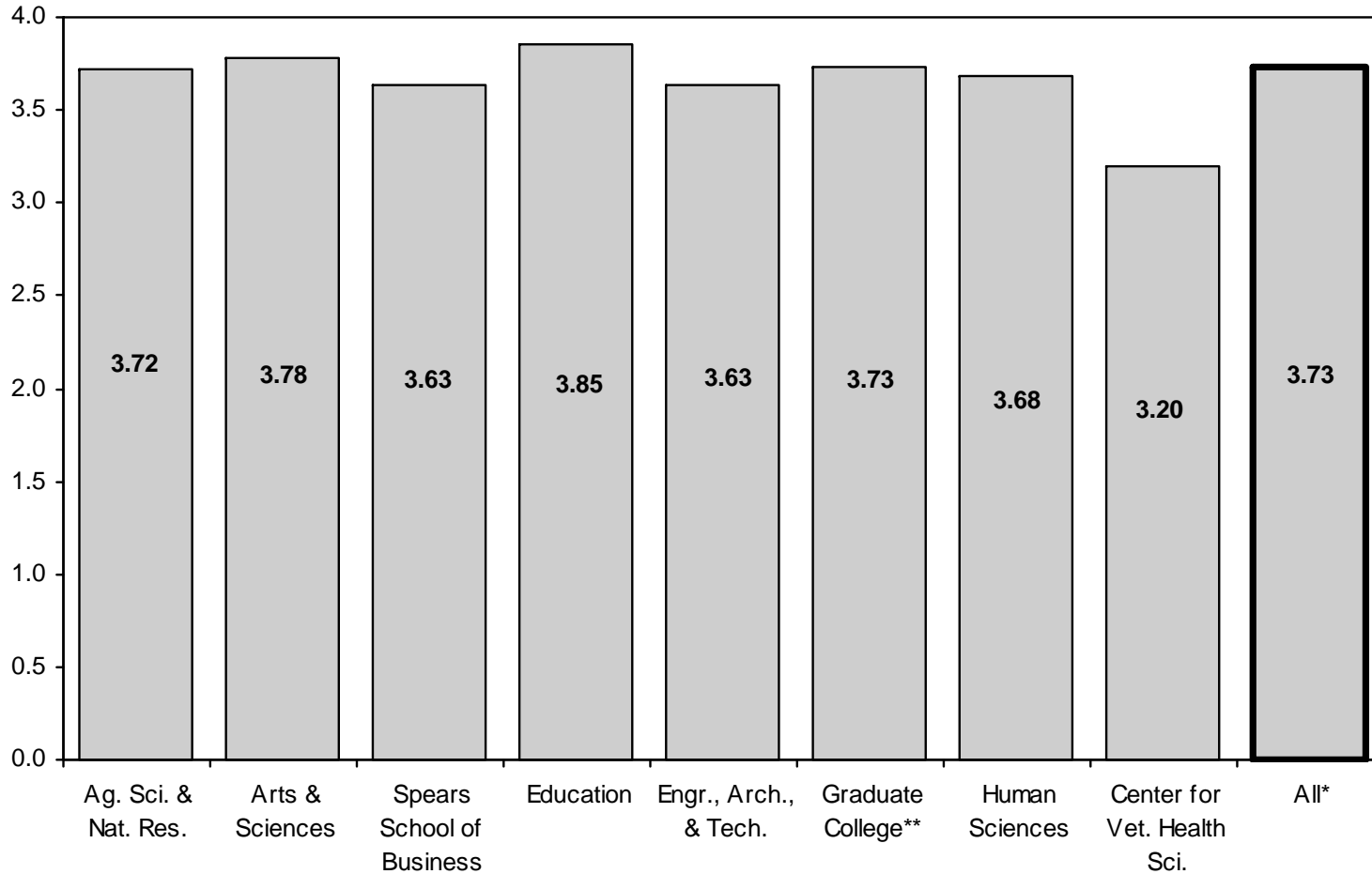
Note: This chart includes 14,458 undergraduates enrolled for Fall 2015 for whom a cumulative GPA was reported. This chart excludes professional students, new freshmen, new transfers, and University College, but includes students enrolled at OSU-Tulsa.

**AVERAGE CUMULATIVE GRADE POINT AVERAGE
OF UNIVERSITY COLLEGE ADVISING STUDENTS
OKLAHOMA STATE UNIVERSITY
FALL SEMESTER 2015**



Note: This chart includes 609 students enrolled in University College Advising in the Fall 2015 semester for whom a cumulative GPA was reported.

**AVERAGE CUMULATIVE GRADE POINT AVERAGE
OF GRADUATE STUDENTS BY COLLEGE
OKLAHOMA STATE UNIVERSITY
FALL SEMESTER 2015**



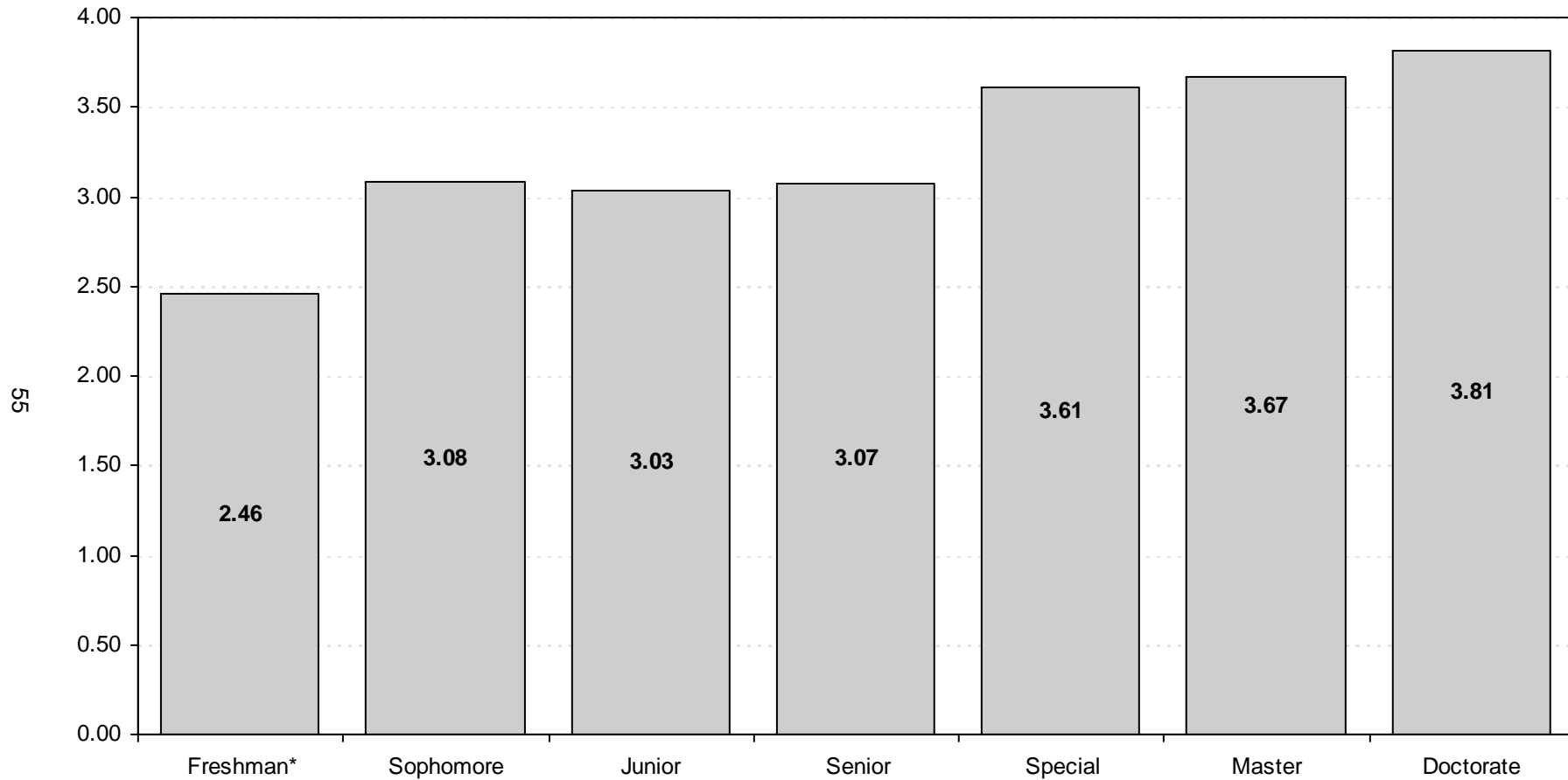
54

*Center for Veterinary Health Sciences professional students are excluded from the overall average.

**Interdisciplinary graduate programs that do not have a specific area of specialization are reported in the Graduate College.

Note: This chart includes 3,177 graduate students and 240 professional students enrolled in the Fall 2015 semester for whom a cumulative GPA was reported. This chart does not include new transfer students but does include students enrolled at OSU-Tulsa.

**AVERAGE CUMULATIVE GRADE POINT AVERAGE
OF STUDENTS BY CLASS LEVEL
OKLAHOMA STATE UNIVERSITY
FALL SEMESTER 2015**



*Includes students enrolled previously who have earned fewer than 28 semester credit hours. This does not include Fall 2015 new freshmen.

Note: This chart includes 18,244 students enrolled in the Fall 2015 semester for whom a cumulative GPA was reported. This chart excludes professional students, new freshmen, and new transfer students, but includes students enrolled at OSU-Tulsa.