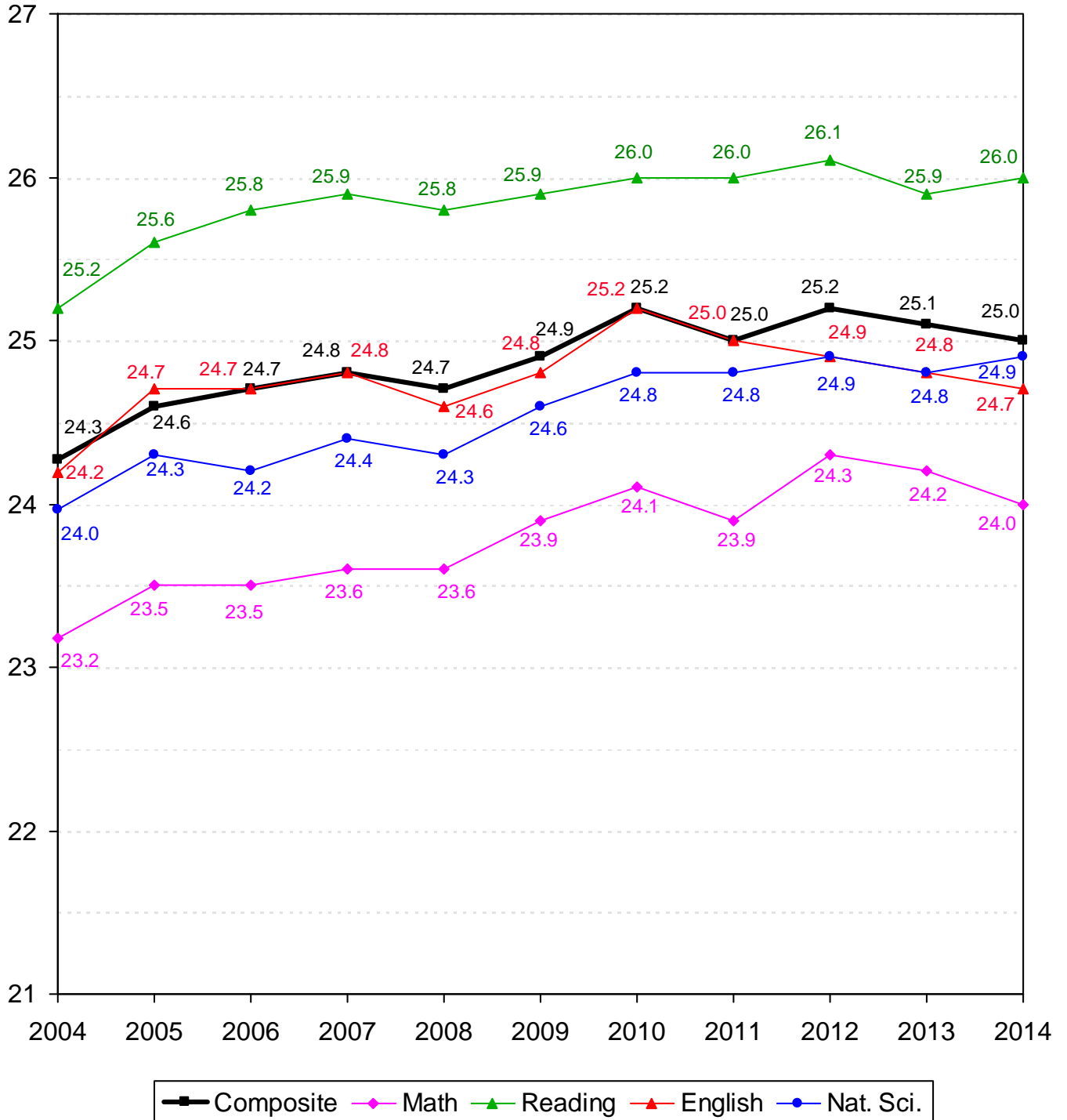


# ACADEMIC INFORMATION



**TEN-YEAR COMPARISON OF ACT SCORES FOR NEW FRESHMEN**  
**OKLAHOMA STATE UNIVERSITY**  
**FALL SEMESTERS 2004 THROUGH 2014**



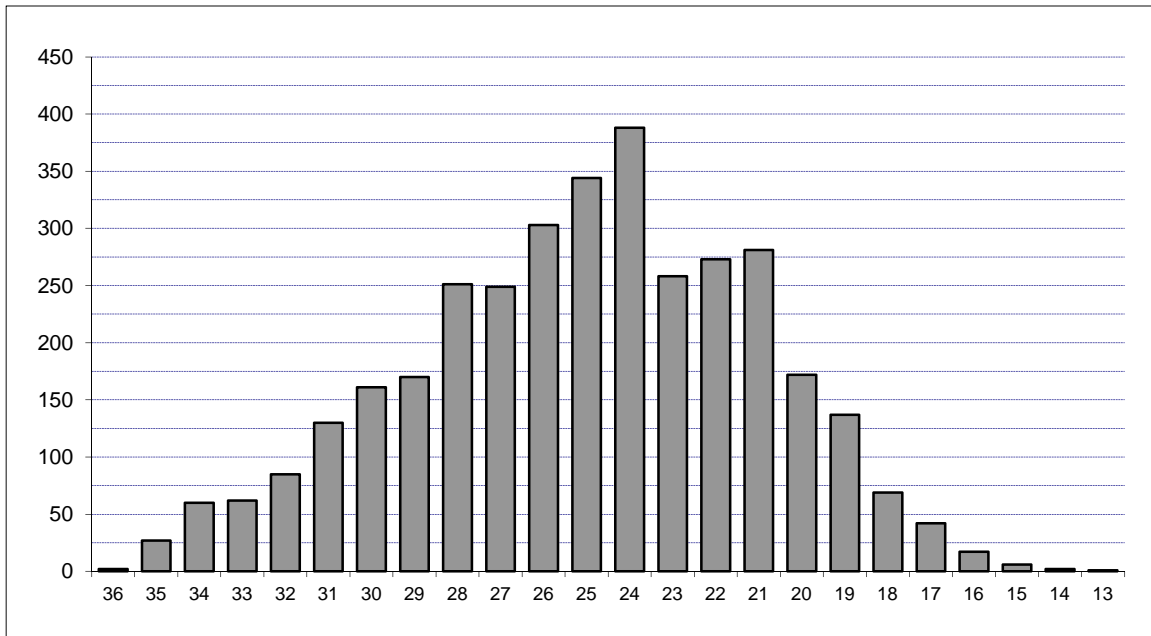
*Note:* Averages reflect the highest value for each subscore that a student received. ACT composite scores are the average of the highest of each subscore received.

**COMPOSITE ACT AND SAT AVERAGES OF NEW FRESHMEN BY COLLEGE  
OKLAHOMA STATE UNIVERSITY  
FALL SEMESTER 2014**

College	ACT		SAT	
	Count	Composite	Count	Composite
Ag. Sciences & Natural Res.	406	25.2	46	1,135
Arts & Sciences	811	25.7	115	1,163
Spears School of Business	488	25.5	103	1,148
Education	192	24.6	27	1,128
Engineering & Architecture	692	27.5	100	1,186
Div. of Technology	40	24.8	2	1,000
Human Sciences	261	24.2	17	1,109
<b>Overall College Average</b>	<b>2,890</b>	<b>25.8</b>	<b>410</b>	<b>1,156</b>
LASSO Center	600	21.4	122	966
<b>Overall Average</b>	<b>3,490</b>	<b>25.0</b>	<b>532</b>	<b>1,113</b>

Note: Composite scores in this table are calculated using the highest subscores obtained for each student. If students have taken both the ACT and the SAT, only the higher score is reported.

**DISTRIBUTION OF NEW FRESHMEN BY COMPOSITE ACT SCORE  
OKLAHOMA STATE UNIVERSITY  
FALL SEMESTER 2014**



Composite ACT Score	Female	Male	Total	Percent	Cumulative Percent
36	2	0	2	0.06%	0.06%
35	9	18	27	0.77%	0.83%
34	22	38	60	1.72%	2.55%
33	25	37	62	1.78%	4.33%
32	34	51	85	2.44%	6.76%
31	56	74	130	3.72%	10.49%
30	65	96	161	4.61%	15.10%
29	91	79	170	4.87%	19.97%
28	123	128	251	7.19%	27.16%
27	138	111	249	7.13%	34.30%
26	159	144	303	8.68%	42.98%
25	189	155	344	9.86%	52.84%
24	207	181	388	11.12%	63.95%
23	132	126	258	7.39%	71.35%
22	155	118	273	7.82%	79.17%
21	164	117	281	8.05%	87.22%
20	105	67	172	4.93%	92.15%
19	68	69	137	3.93%	96.07%
18	42	27	69	1.98%	98.05%
17	27	15	42	1.20%	99.26%
16	12	5	17	0.49%	99.74%
15	5	1	6	0.17%	99.91%
14	0	2	2	0.06%	99.97%
13	1	0	1	0.03%	100.00%
<b>Total</b>	<b>1,831</b>	<b>1,659</b>	<b>3,490</b>	<b>100.0%</b>	<b>100.00%</b>

Note: ACT scores are only included in this table if they represent the highest test score available for the student. If the student's SAT score (converted to an ACT equivalent) is higher, then the ACT score is not included here.

**ACT AND SAT AVERAGES OF NEW FRESHMEN BY ETHNICITY AND GENDER  
OKLAHOMA STATE UNIVERSITY  
FALL SEMESTER 2014**

Ethnicity	ACT		SAT	
	Count	Composite	Count	Composite
White	2,491	25.6	376	1,148
African American	174	20.9	37	923
Native American	144	23.7	5	1,036
Hispanic	229	23.8	52	1,063
Asian	56	24.8	3	1,127
Pacific Islander	5	22.0	-	-
Multiracial	378	24.6	34	1,088
International	7	26.1	25	1,012
Unknown	6	26.8	-	-
<b>Gender</b>				
Female	1,831	24.7	244	1,092
Male	1,659	25.5	288	1,131
<b>Total</b>	<b>3,490</b>	<b>25.0</b>	<b>532</b>	<b>1,113</b>

*Note:* Composite scores in this table are calculated using the highest subscores obtained for each student. If students have taken both the ACT and the SAT, only the higher score is reported.

**OKLAHOMA HIGH SCHOOL ACT PARTICIPATION STATISTICS  
OKLAHOMA STATE UNIVERSITY  
2009 THROUGH 2014**

	2009		2010		2011		2012		2013		2014	
High School Graduates in Oklahoma <sup>1</sup>	38,468		39,808		37,719		38,968		38,616		37,748	
Number of Oklahoma H.S. Students Taking ACT <sup>2*</sup>	27,054		28,343		28,223		29,342		28,988		28,682	
Total ACT Scores Received by OSU <sup>2**</sup>	7,564		7,946		7,836		8,121		7,808		7,536	
1st Choice / % of Scores Received	2,671	35.3%	2,908	36.6%	2,983	38.1%	3,227	39.7%	3,061	39.2%	2,984	39.6%
2nd - 6th Choices / % of Scores Received	4,893	64.7%	5,038	63.4%	4,853	61.9%	4,894	60.3%	4,747	60.8%	4,552	60.4%
Applications Received by OSU	7,561		8,696		9,914		12,056		11,064		12,281	
New Freshmen Accepted by OSU	6,537		7,079		8,099		9,351		8,411		9,192	
% of Applications Received	86.5%		81.4%		81.7%		77.6%		76.0%		74.8%	
New Freshmen Enrolled at OSU	3,148		3,554		3,896		4,289		3,872		4,057	
% of Freshmen Accepted	48.2%		50.2%		48.1%		45.9%		46.0%		44.1%	

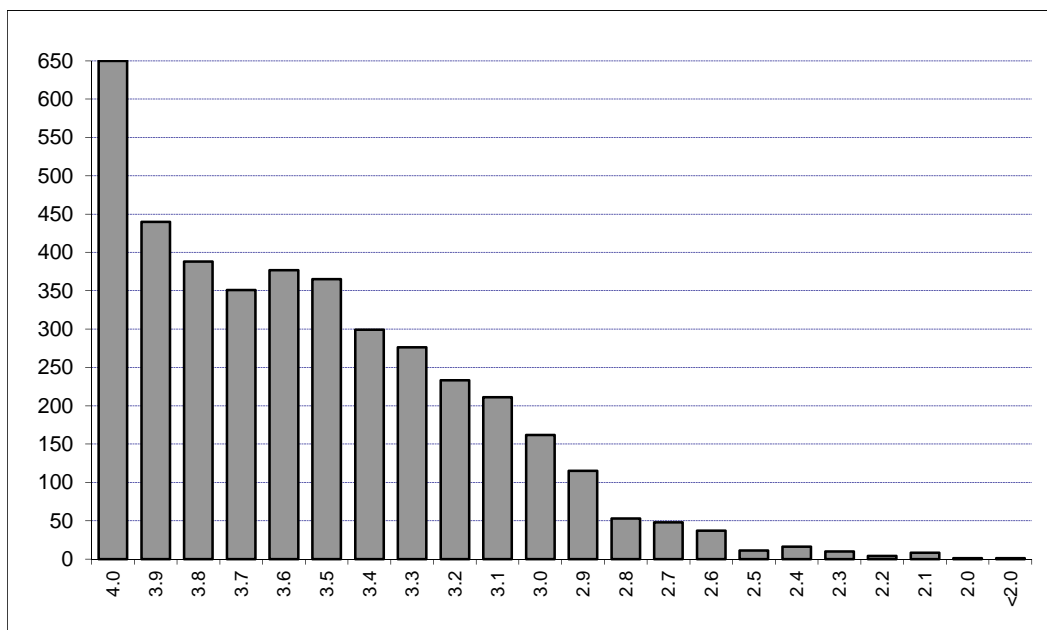
<sup>1</sup>Source - Oklahoma High School Graduates - Projections, Oklahoma State Regents for Higher Education (Projections for 2014)

<sup>2</sup>Source - ACT Profile Report - State, Graduating Class 2014, Oklahoma

\*This includes only Oklahoma high school graduates who took the ACT prior to graduation in the year indicated.

\*\*This includes only those students eligible for college enrollment in the fall semester of the year indicated and does not include multiple ACT scores for any one student. Student Profiles prior to Fall 2003 may include multiple ACT scores per person.

**DISTRIBUTION OF FRESHMEN HIGH SCHOOL GRADE POINT AVERAGES  
OKLAHOMA STATE UNIVERSITY  
FALL SEMESTER 2014**



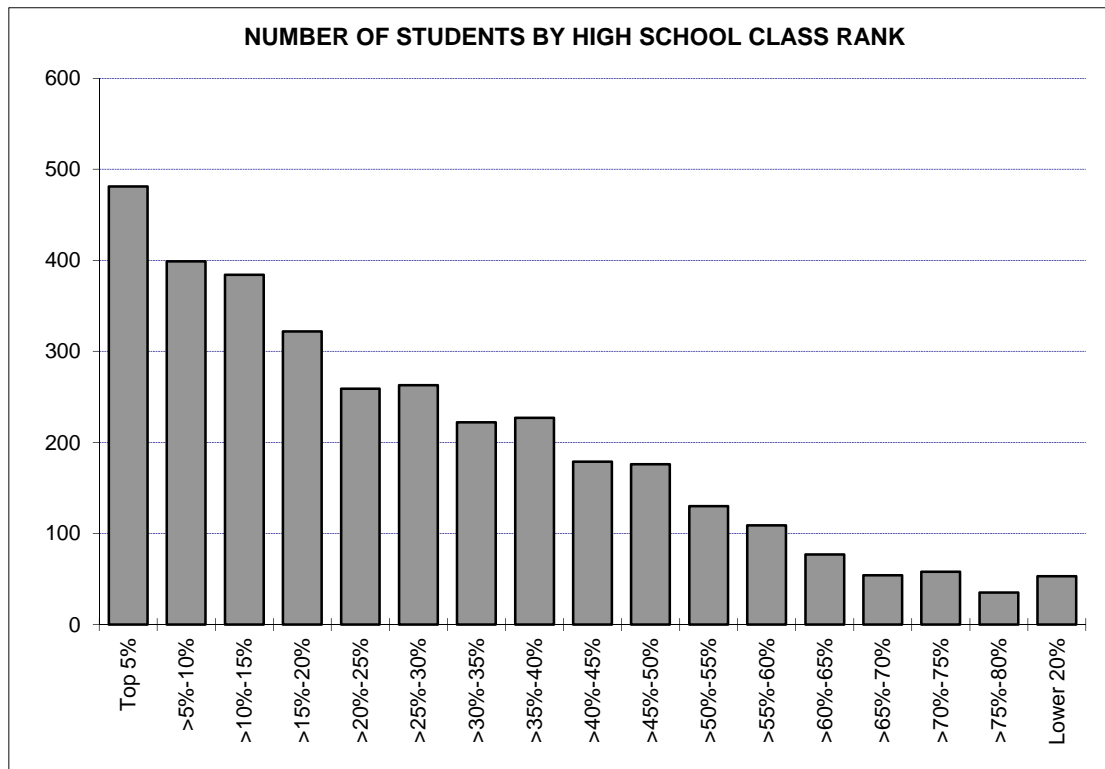
GPA	Number	Cumulative Number	Percent	Cumulative Percent
4.0	650	650	16.03%	16.03%
3.9	440	1,090	10.85%	26.87%
3.8	388	1,478	9.57%	36.44%
3.7	351	1,829	8.65%	45.09%
3.6	377	2,206	9.29%	54.39%
3.5	365	2,571	9.00%	63.39%
3.4	299	2,870	7.37%	70.76%
3.3	276	3,146	6.80%	77.56%
3.2	233	3,379	5.74%	83.31%
3.1	211	3,590	5.20%	88.51%
3.0	162	3,752	3.99%	92.50%
2.9	115	3,867	2.84%	95.34%
2.8	53	3,920	1.31%	96.65%
2.7	48	3,968	1.18%	97.83%
2.6	37	4,005	0.91%	98.74%
2.5	11	4,016	0.27%	99.01%
2.4	16	4,032	0.39%	99.41%
2.3	10	4,042	0.25%	99.65%
2.2	4	4,046	0.10%	99.75%
2.1	8	4,054	0.20%	99.95%
2.0	1	4,055	0.02%	99.98%
<2.0	1	4,056	0.02%	100.0%
<b>Total</b>	<b>4,056</b>	<b>4,056</b>	<b>100.0%</b>	<b>100.0%</b>

Note: One new freshman (including international, home schooled, and adult admission students) did not supply a high school GPA.

The average high school GPA reported was 3.54. The average high school core GPA calculated was 3.60.



**RANK IN HIGH SCHOOL CLASS BY NUMBER OF NEW FRESHMEN & PERCENT IN EACH RANK  
OKLAHOMA STATE UNIVERSITY  
FALL SEMESTER 2014**

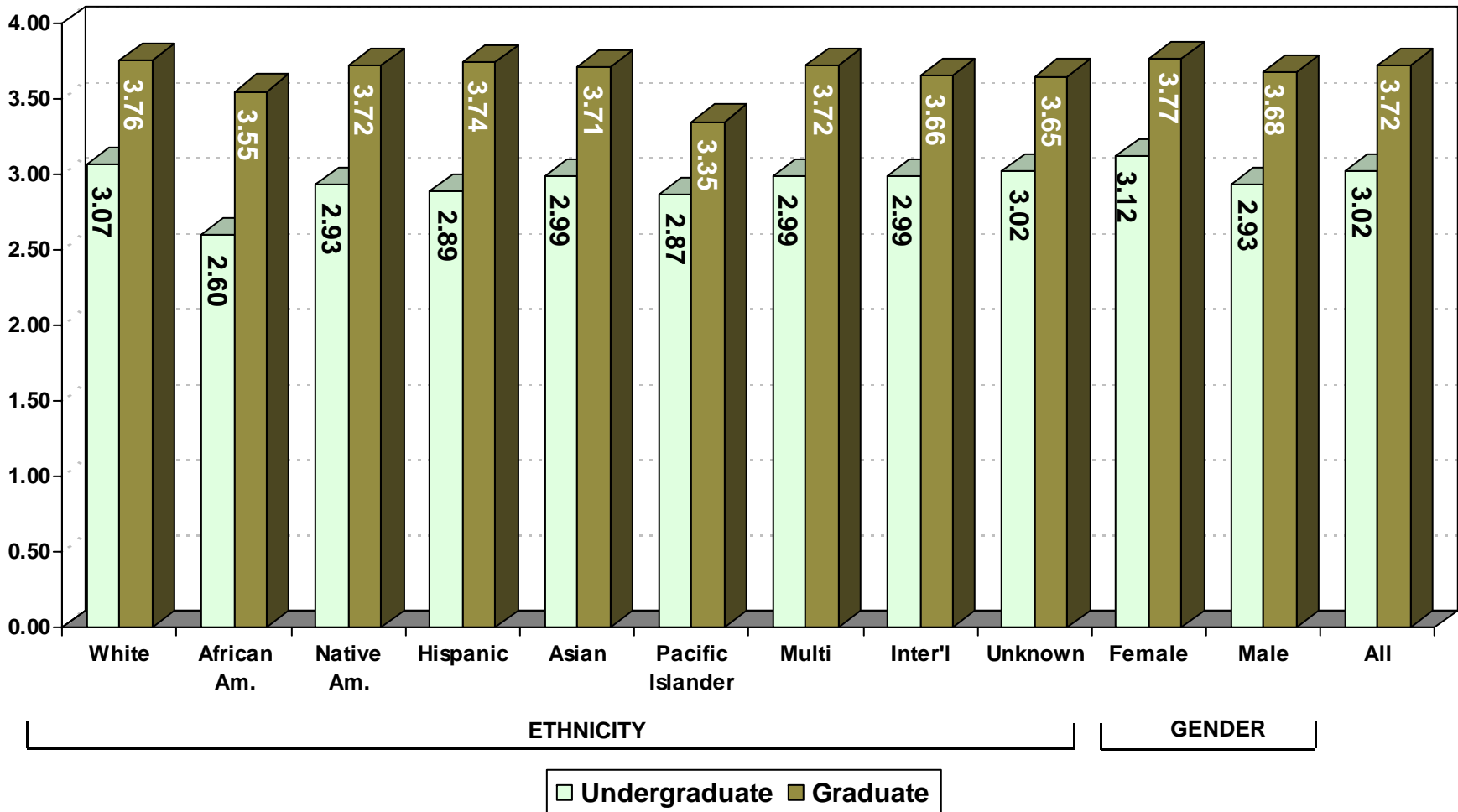


Rank	Number	Cumulative Number	Percent	Cumulative Percent
Top 5%	481	481	14.03%	14.03%
>5%-10%	399	880	11.64%	25.67%
>10%-15%	384	1,264	11.20%	36.87%
>15%-20%	322	1,586	9.39%	46.27%
>20%-25%	259	1,845	7.56%	53.82%
>25%-30%	263	2,108	7.67%	61.49%
>30%-35%	222	2,330	6.48%	67.97%
>35%-40%	227	2,557	6.62%	74.59%
>40%-45%	179	2,736	5.22%	79.81%
>45%-50%	176	2,912	5.13%	84.95%
>50%-55%	130	3,042	3.79%	88.74%
>55%-60%	109	3,151	3.18%	91.92%
>60%-65%	77	3,228	2.25%	94.17%
>65%-70%	54	3,282	1.58%	95.74%
>70%-75%	58	3,340	1.69%	97.43%
>75%-80%	35	3,375	1.02%	98.45%
Lower 20%	53	3,428	1.55%	100.0%

Note: 629 new freshmen (including international, home schooled, and adult admission students) did not supply a high school rank.

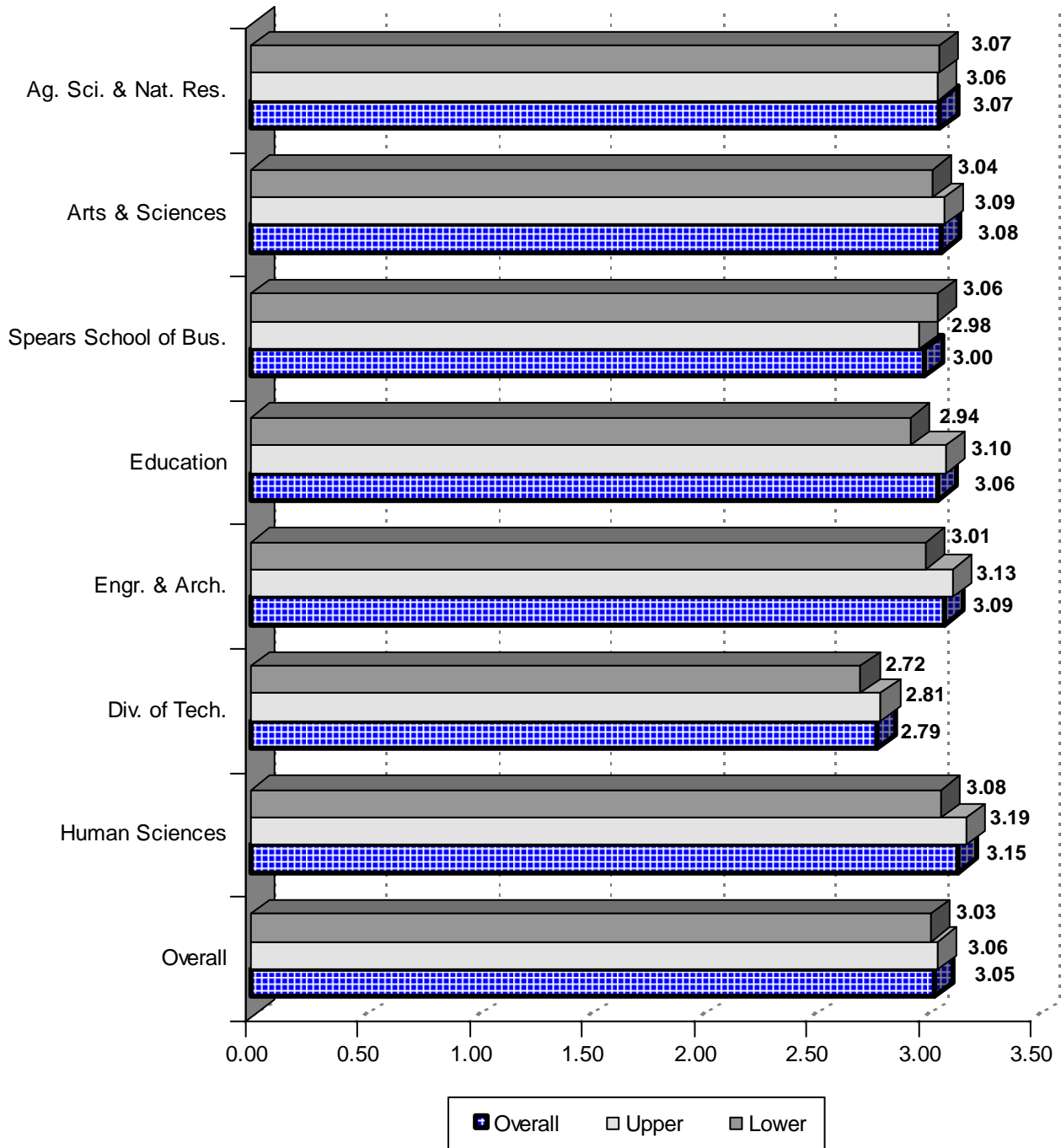
**AVERAGE CUMULATIVE GRADE POINT AVERAGE BY ETHNICITY AND GENDER**  
**OKLAHOMA STATE UNIVERSITY**  
**FALL SEMESTER 2014**

51



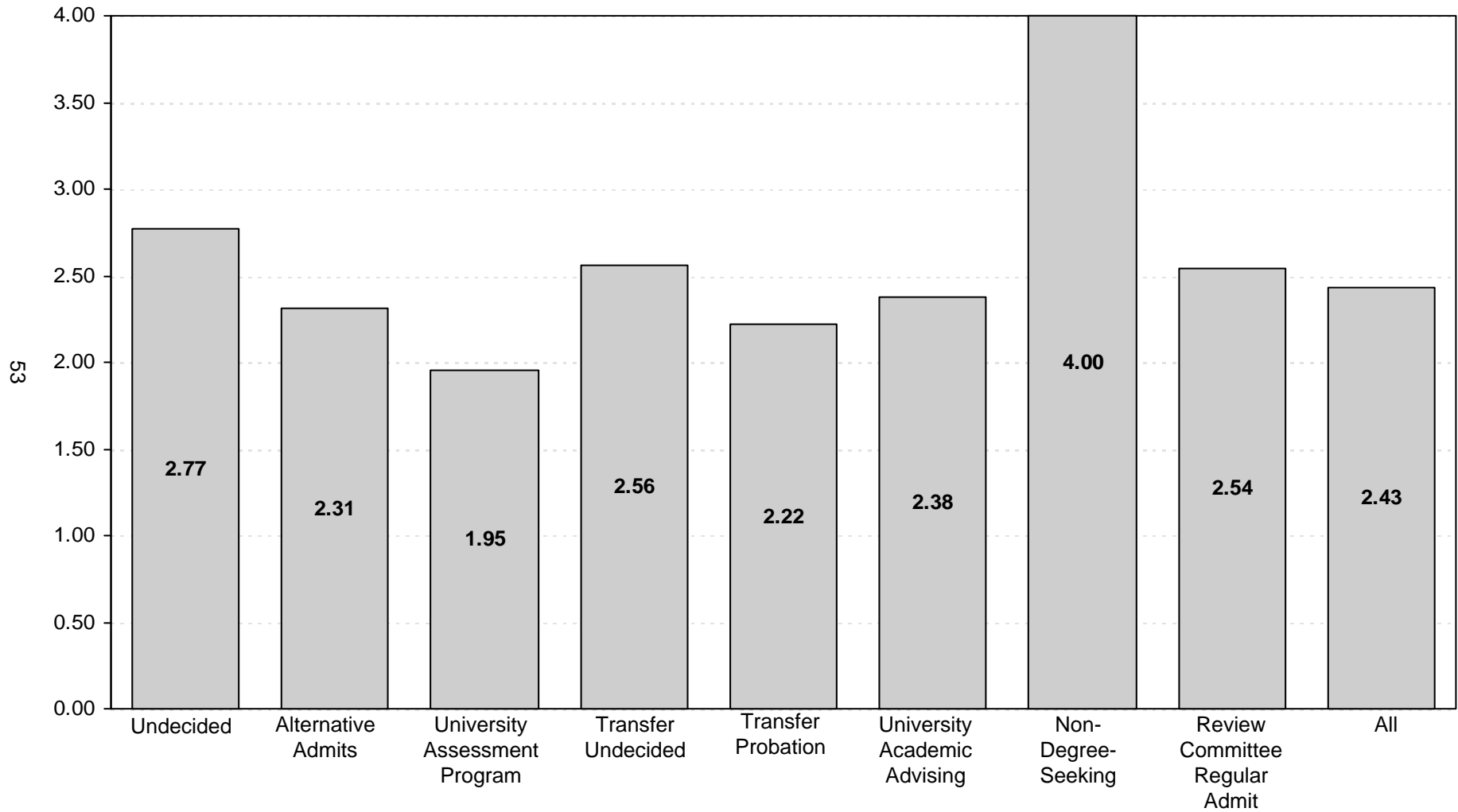
Note: The data presented above includes 14,891 undergraduates and 3,470 graduates for whom a cumulative GPA was reported. This chart excludes professional students, new transfers, and new freshmen, but includes students at OSU-Tulsa.

**AVERAGE CUMULATIVE GRADE POINT AVERAGE  
OF UNDERGRADUATE STUDENTS BY COLLEGE AND DIVISION  
OKLAHOMA STATE UNIVERSITY  
FALL SEMESTER 2014**



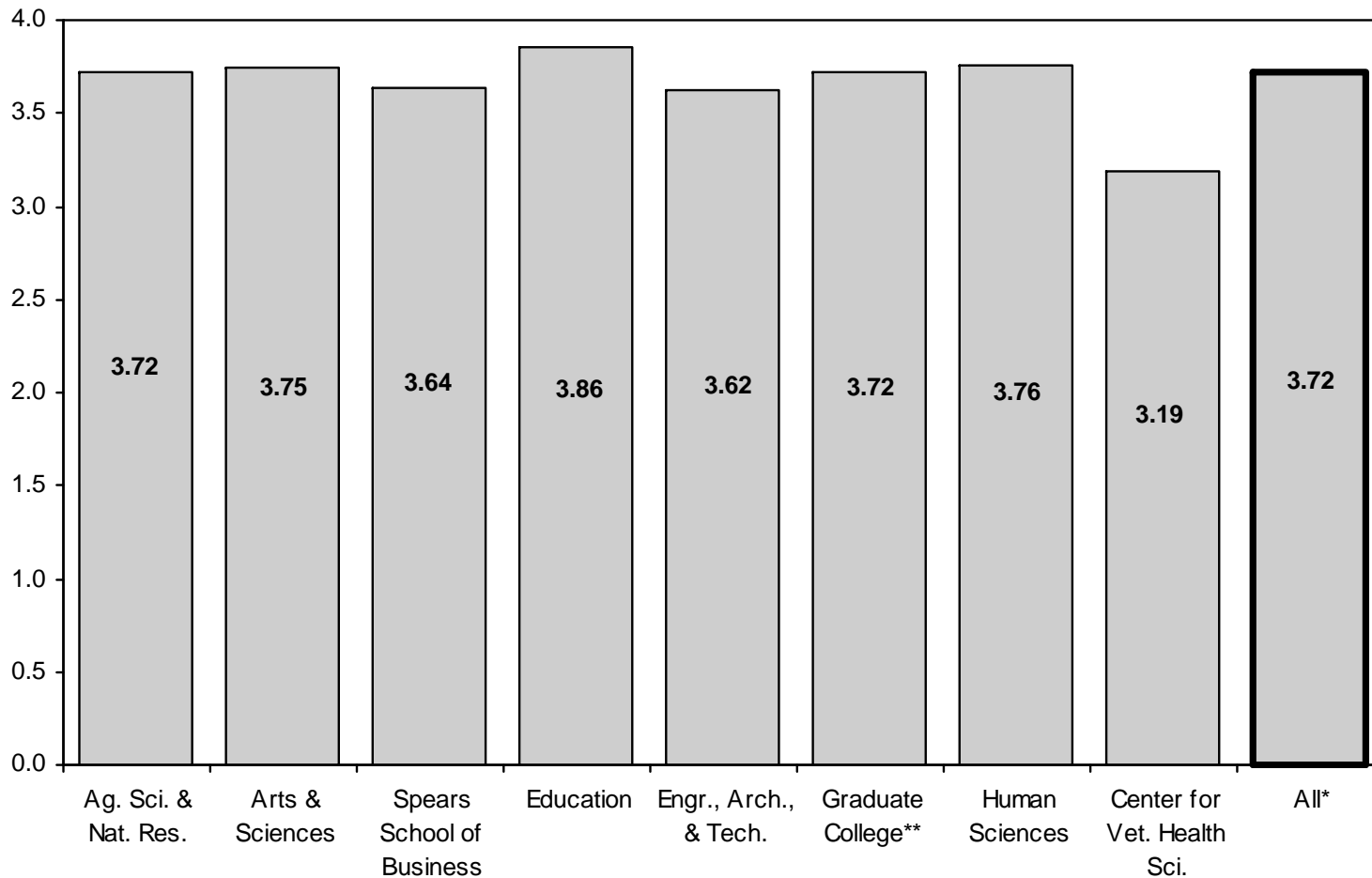
*Note:* This chart includes 14,179 undergraduates enrolled for Fall 2014 for whom a cumulative GPA was reported. This chart excludes professional students, new freshmen, new transfers, and LASSO Center, but includes students enrolled at OSU-Tulsa.

**AVERAGE CUMULATIVE GRADE POINT AVERAGE  
OF LASSO CENTER STUDENTS  
OKLAHOMA STATE UNIVERSITY  
FALL SEMESTER 2014**



*Note:* This chart includes 712 students enrolled in LASSO Center in the Fall 2014 semester for whom a cumulative GPA was reported.

**AVERAGE CUMULATIVE GRADE POINT AVERAGE  
OF GRADUATE STUDENTS BY COLLEGE  
OKLAHOMA STATE UNIVERSITY  
FALL SEMESTER 2014**

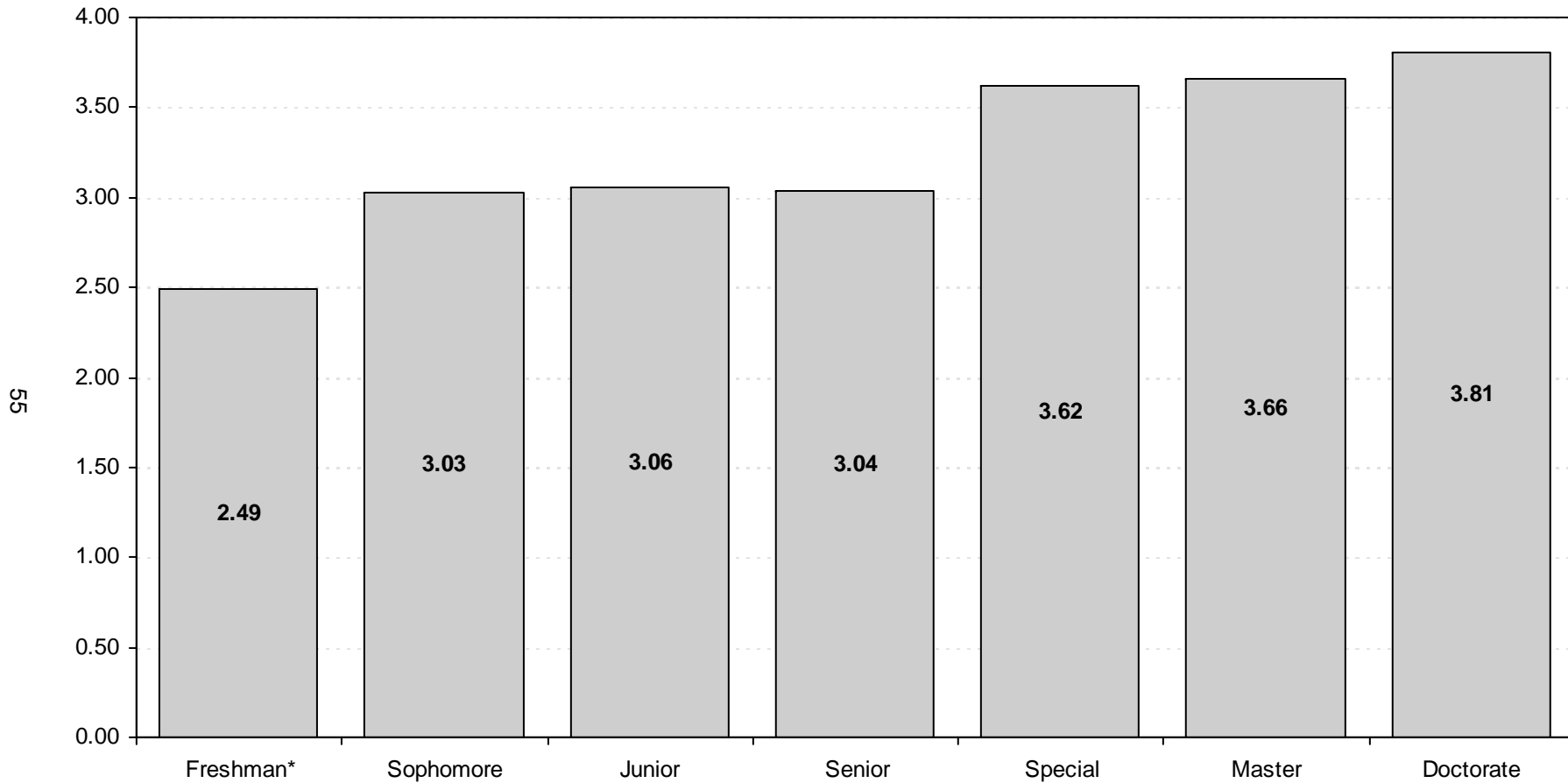


\*Center for Veterinary Health Sciences' professional students are excluded from the overall average.

\*\*Interdisciplinary graduate programs that do not have a specific area of specialization are reported in the Graduate College.

*Note:* This chart includes 3,470 graduate students and 252 professional students enrolled in the Fall 2014 semester for whom a cumulative GPA was reported. This chart does not include new transfer students but does include students enrolled at OSU-Tulsa.

**AVERAGE CUMULATIVE GRADE POINT AVERAGE  
OF STUDENTS BY CLASS LEVEL  
OKLAHOMA STATE UNIVERSITY  
FALL SEMESTER 2014**



\*Includes students enrolled previously who have earned fewer than 28 semester credit hours. This does not include Fall 2014 new freshmen.

Note: This chart includes 18,361 students enrolled in the Fall 2014 semester for whom a cumulative GPA was reported. This chart excludes professional students, new freshmen, and new transfer students, but includes students enrolled at OSU-Tulsa.