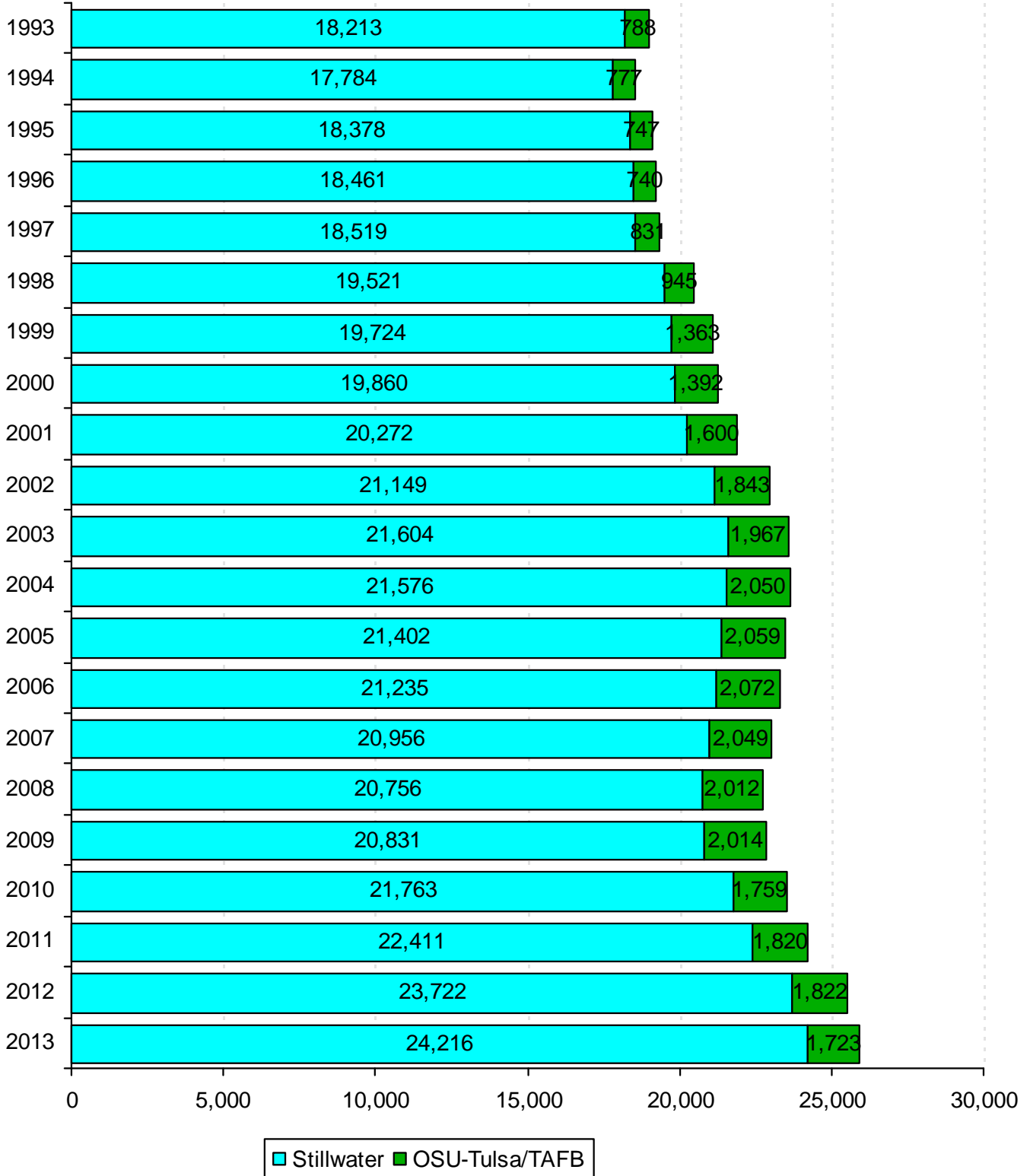
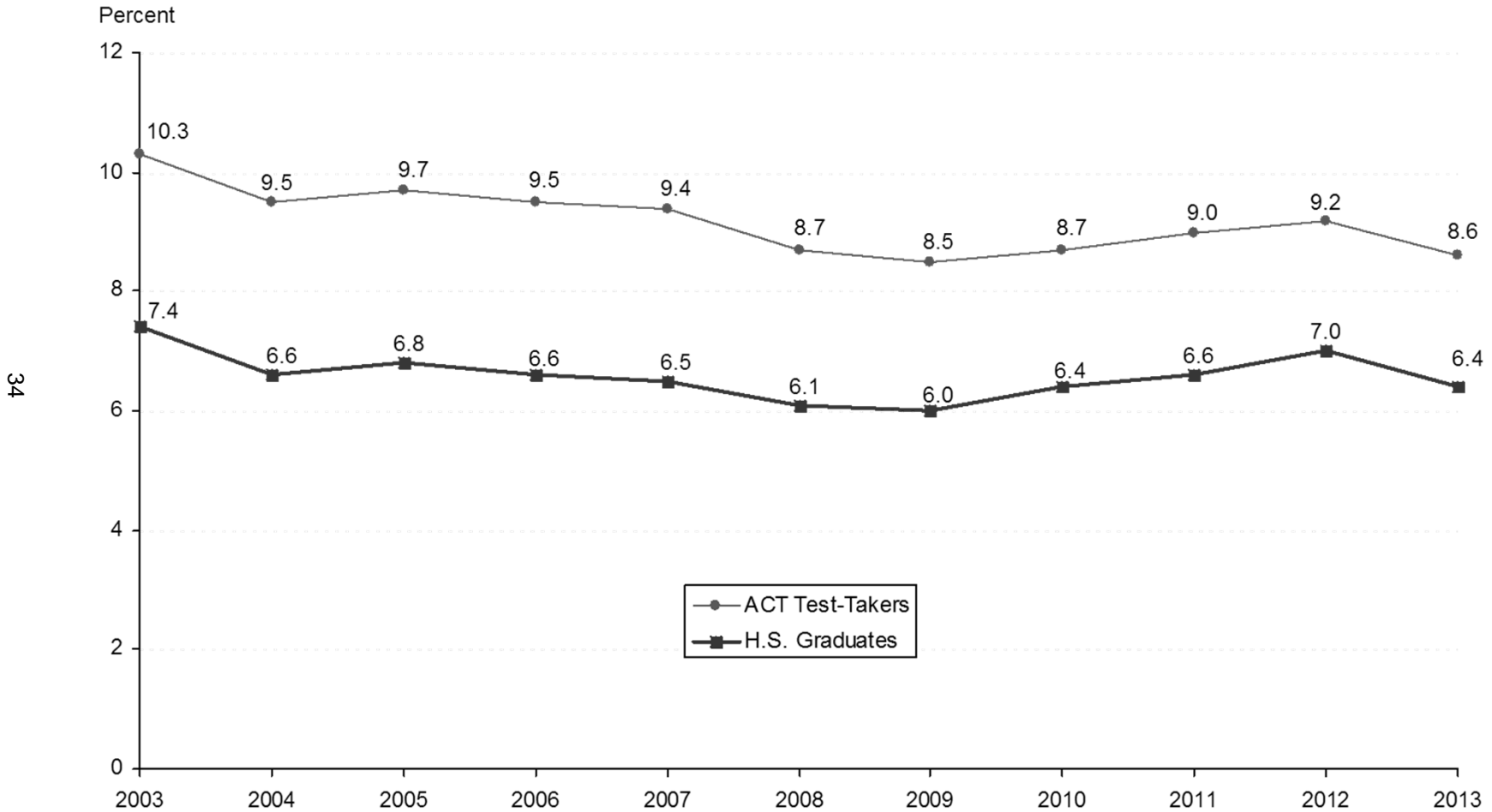


ENROLLMENT TRENDS

STILLWATER AND TULSA CAMPUS ENROLLMENT
OKLAHOMA STATE UNIVERSITY
FALL SEMESTERS 1993 THROUGH 2013



**OKLAHOMA STATE UNIVERSITY SHARE OF THE MARKET
RATIO OF BEGINNING RESIDENT FRESHMEN
TO OKLAHOMA HIGH SCHOOL SPRING GRADUATES AND ACT TEST-TAKERS
OKLAHOMA STATE UNIVERSITY
FALL SEMESTERS 2003 THROUGH 2013**



Note: Total Oklahoma high school graduates for 2013 = 38,616; total Oklahoma ACT test-takers = 28,988. The beginning resident freshman count for all years include OSU-Tulsa students, but excludes non-degree-seeking and first time concurrent high school resident students. (See Page 43).

Source: Oklahoma High School Graduates-Projections, Oklahoma State Regents for Higher Education, and ACT Profile Report – State, Graduating Class 2013, Oklahoma.

**ENROLLMENT BY TYPE OF ADMISSION
OKLAHOMA STATE UNIVERSITY
FALL SEMESTERS 2003 THROUGH 2013**

Fall	New Freshmen*	% Inc / Dec	Continuing	% Inc / Dec	Readmission	% Inc / Dec	New Transfer	% Inc / Dec	Non-Degree	% Inc / Dec	Concurrent	% Inc / Dec	Total	% Inc / Dec
2003	3,430		16,106		941		2,675		54		68		23,274	
2004	3,264	-4.8%	16,274	1.0%	874	-7.1%	2,764	3.3%	87	61.1%	67	-1.5%	23,330	0.2%
2005	3,315	1.6%	16,180	-0.6%	780	-10.8%	2,754	-0.4%	80	-8.0%	56	-16.4%	23,165	-0.7%
2006	3,236	-2.4%	16,189	0.1%	648	-16.9%	2,789	1.3%	57	-28.8%	80	42.9%	22,999	-0.7%
2007	3,209	-0.8%	16,016	-1.1%	590	-9.0%	2,715	-2.7%	69	21.1%	94	17.5%	22,693	-1.3%
2008	3,073	-4.2%	15,812	-1.3%	621	5.3%	2,658	-2.1%	192	178.3%	93	-1.1%	22,449	-1.1%
2009	3,148	2.4%	15,564	-1.6%	709	14.2%	2,852	7.3%	164	-14.6%	79	-15.1%	22,516	0.3%
2010	3,554	12.9%	15,899	2.2%	508	-28.3%	3,005	5.4%	124	-24.4%	88	11.4%	23,178	2.9%
2011	3,896	9.6%	16,315	2.6%	510	0.4%	2,914	-3.0%	146	17.7%	101	14.8%	23,882	3.0%
2012	4,289	10.1%	16,986	4.1%	524	2.7%	3,175	9.0%	130	-11.0%	88	-12.9%	25,192	5.5%
2013	3,872	-9.7%	17,947	5.7%	492	-6.1%	3,046	-4.1%	140	7.7%	93	5.7%	25,590	1.6%

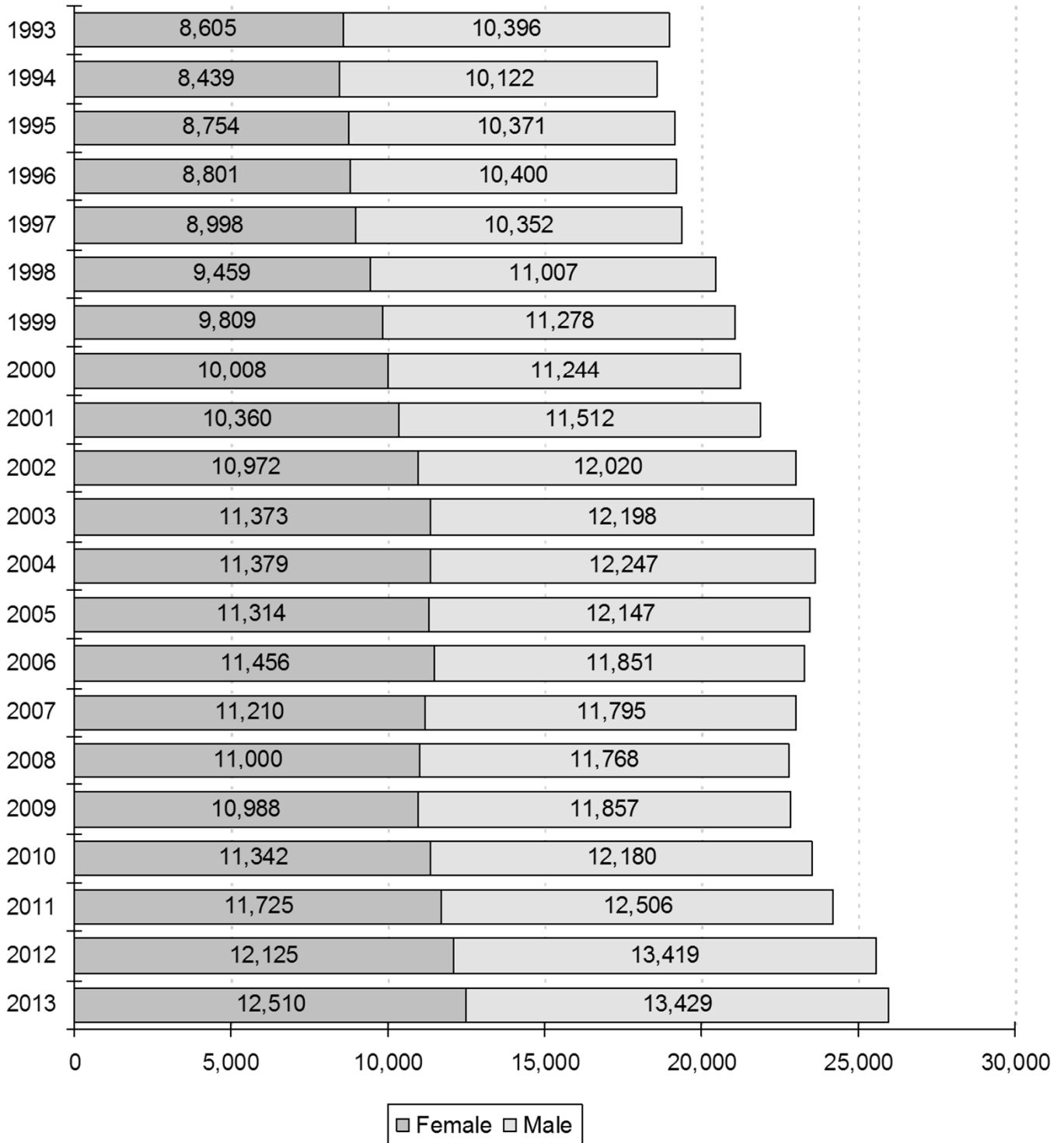
35

Note: This table excludes 349 professional students for Fall 2013, but does include OSU-Tulsa figures for all years listed.
The percentage increase or decrease in enrollment between two semesters is shown in the "% Inc / Dec" column. Example:
There was a 5.7% increase in enrollment of continuing students from Fall 2012 to Fall 2013.

* New freshmen counts exclude concurrent high school students and non-degree-seeking students for all years listed.

Student Profile books prior to Fall 2006 include new concurrent high school students in the new freshmen counts.

ENROLLMENT BY GENDER
OKLAHOMA STATE UNIVERSITY
FALL SEMESTERS 1993 THROUGH 2013



Note: This chart includes professional students and OSU-Tulsa students for all years listed. Hence, these figures will not match the figures in the Student Profile books prior to 2003.

**ENROLLMENT BY CLASSIFICATION
OKLAHOMA STATE UNIVERSITY
FALL SEMESTERS 1993 THROUGH 2013**

Year	Freshmen	Sophomores	Juniors	Seniors	Special Undergrads	Graduates	Professional	On-Campus Total	Off-Campus OSU-T & TAFB	Grand Total
1993	3,161	3,200	3,727	4,195	22	3,636	272	18,213	788	19,001
1994	3,187	3,034	3,612	4,215	41	3,424	271	17,784	777	18,561
1995	3,446	3,040	3,646	4,273	34	3,664	275	18,378	747	19,125
1996	3,427	3,226	3,508	4,311	47	3,658	284	18,461	740	19,201
1997	3,378	3,308	3,683	4,168	68	3,625	289	18,519	831	19,350
1998	3,535	3,464	3,874	4,379	70	3,902	297	19,521	945	20,466
1999	4,068	3,543	3,923	4,235	45	3,616	294	19,724	1,363	21,087
2000	4,148	3,765	3,834	4,339	46	3,436	292	19,860	1,392	21,252
2001	4,361	3,886	3,925	4,234	51	3,526	289	20,272	1,600	21,872
2002	4,473	3,944	4,115	4,458	49	3,818	292	21,149	1,843	22,992
2003	4,649	4,083	4,197	4,548	14	3,816	297	21,604	1,967	23,571
2004	4,462	4,056	4,266	4,604	105	3,787	296	21,576	2,050	23,626
2005	4,325	4,035	4,391	4,736	97	3,522	296	21,402	2,059	23,461
2006	4,143	4,099	4,383	4,658	109	3,535	308	21,235	2,072	23,307
2007	4,034	3,977	4,262	4,602	133	3,636	312	20,956	2,049	23,005
2008	3,803	3,795	4,280	4,517	241	3,801	319	20,756	2,012	22,768
2009	3,905	3,598	4,134	4,653	210	4,002	329	20,831	2,014	22,845
2010	4,289	3,700	4,123	4,709	186	4,412	344	21,763	1,759	23,522
2011	4,626	3,986	4,288	4,721	229	4,212	349	22,411	1,820	24,231
2012	5,088	4,237	4,611	4,862	202	4,370	352	23,722	1,822	25,544
2013	4,591	4,617	4,699	5,296	198	4,466	349	24,216	1,723	25,939

37

Note: Effective 2000, Off-Campus OSU-T & Tinker Air Force Base column reflects OSU-Tulsa enrollment only.

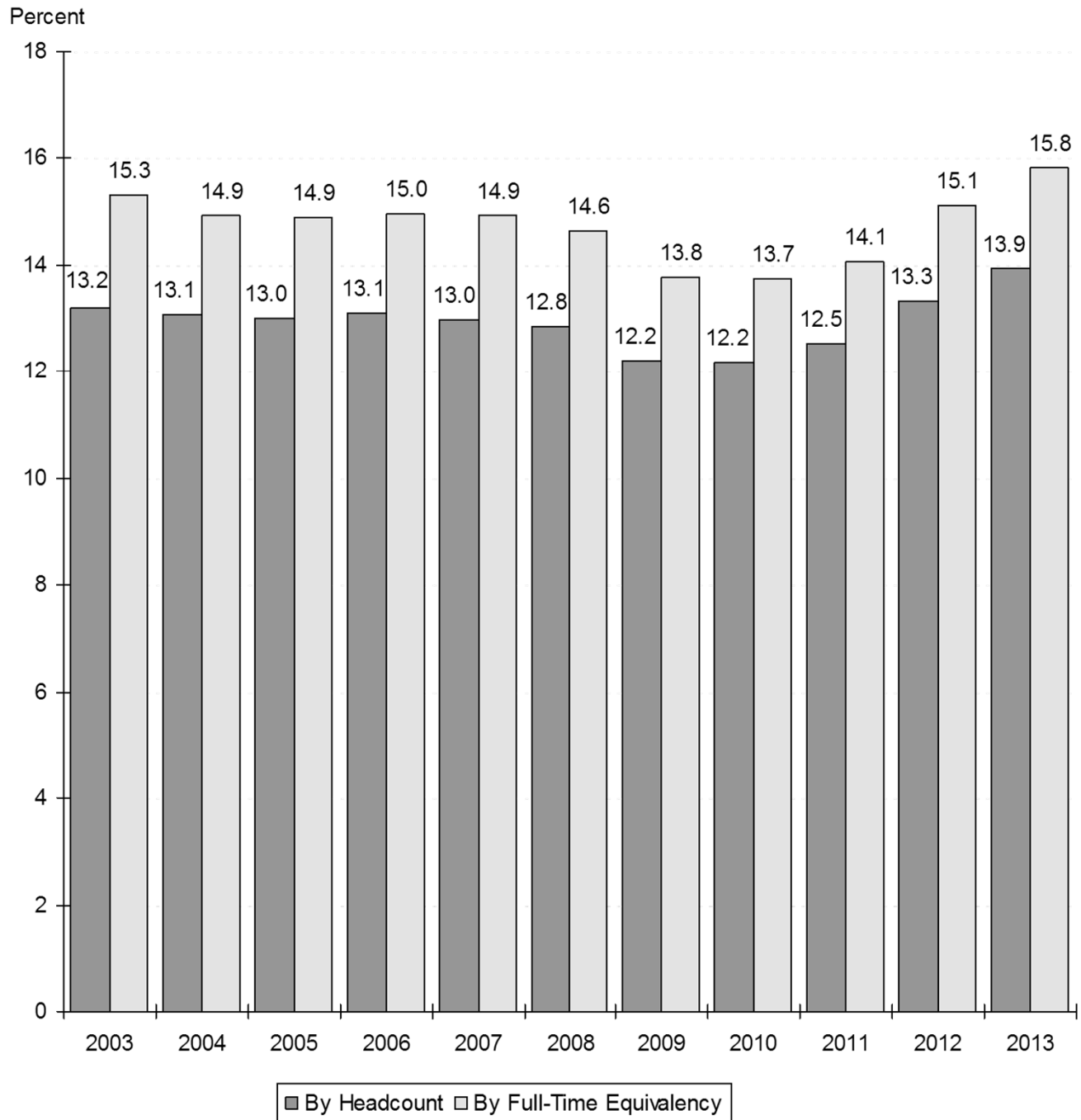
**ENROLLMENT BY ETHNICITY
OKLAHOMA STATE UNIVERSITY
FALL SEMESTERS 2003 THROUGH 2013**

Fall Semester	White		African American		Native American		Hispanic		Asian		Pacific Islander		Multiracial		International		Unknown		Total
	Number	%	Number	%	Number	%	Number	%	Number	%	Number	%	Number	%	Number	%	Number	%	
2003	17,905	76.0%	778	3.3%	1,838	7.8%	444	1.9%	371	1.6%	N/A	N/A	N/A	N/A	2,235	9.5%	N/A	N/A	23,571
2004	17,943	75.9%	918	3.9%	1,896	8.0%	447	1.9%	389	1.6%	N/A	N/A	N/A	N/A	2,033	8.6%	N/A	N/A	23,626
2005	17,894	76.3%	917	3.9%	1,973	8.4%	523	2.2%	388	1.7%	N/A	N/A	N/A	N/A	1,766	7.5%	N/A	N/A	23,461
2006	17,769	76.2%	959	4.1%	1,990	8.5%	533	2.3%	411	1.8%	N/A	N/A	N/A	N/A	1,645	7.1%	N/A	N/A	23,307
2007	17,443	75.8%	923	4.0%	1,993	8.7%	525	2.3%	388	1.7%	N/A	N/A	N/A	N/A	1,733	7.5%	N/A	N/A	23,005
2008	17,172	75.4%	930	4.1%	1,964	8.6%	566	2.5%	386	1.7%	N/A	N/A	N/A	N/A	1,750	7.7%	N/A	N/A	22,768
2009	17,297	75.7%	929	4.1%	1,915	8.4%	555	2.4%	363	1.6%	N/A	N/A	N/A	N/A	1,786	7.8%	N/A	N/A	22,845
2010	17,599	74.8%	1,029	4.4%	2,032	8.6%	594	2.5%	399	1.7%	N/A	N/A	N/A	N/A	1,869	7.9%	N/A	N/A	23,522
2011*	17,109	70.6%	1,066	4.4%	1,506	6.2%	930	3.8%	366	1.5%	4	0.0%	1,301	5.4%	1,661	6.9%	288	1.2%	24,231
2012	17,976	70.4%	1,144	4.5%	1,403	5.5%	1,039	4.1%	420	1.6%	7	0.0%	1,551	6.1%	1,758	6.9%	246	1.0%	25,544
2013	18,015	69.5%	1,157	4.5%	1,394	5.4%	1,151	4.4%	424	1.6%	9	0.0%	1,638	6.3%	1,941	7.5%	210	0.8%	25,939

Note: This table includes professional students and OSU-Tulsa students for all years listed. Student Profile books prior to Fall 2003 do not contain OSU-Tulsa students on this page.

* Starting from 2011, ethnicity codes were expanded to include Pacific Islanders, Multiracial and Unknown.

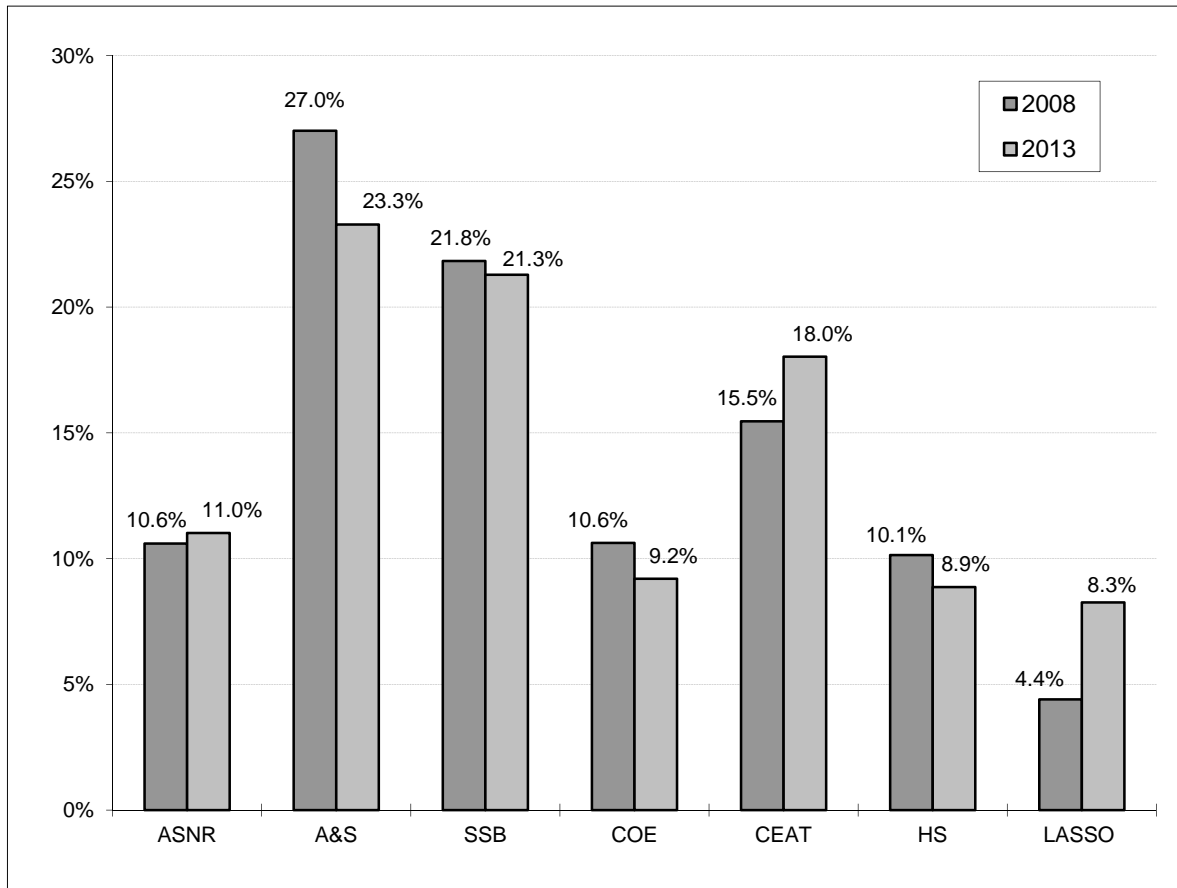
**OSU ENROLLMENT AS A PERCENT OF TOTAL ENROLLMENT
IN THE OKLAHOMA STATE SYSTEMS (PUBLIC)
OKLAHOMA STATE UNIVERSITY
FALL SEMESTERS 2003 THROUGH 2013**



Source: Preliminary Enrollment Report for Oklahoma Higher Education Fall 2013,
Oklahoma State Regents for Higher Education.

Note: Total Enrollment in the Oklahoma State Systems (Public) excludes interns and residents. Student Profile books prior to Fall 2008 included interns and residents in the total headcount enrollment.

**COMPARISON OF DISTRIBUTION OF UNDERGRADUATE MAJORS BY COLLEGE
OKLAHOMA STATE UNIVERSITY
FALL SEMESTERS 2008 AND 2013**



**UNDERGRADUATE MAJORS BY COLLEGE
OKLAHOMA STATE UNIVERSITY
FALL SEMESTERS 2008 THROUGH 2013**

Year	Ag. Sci. & Nat. Res.	Arts & Sciences	Spears Sch. of Bus.	Education	Engr., Arch., & Tech.	Human Sciences	LASSO Center	Total
2008	1,907	4,857	3,927	1,911	2,780	1,823	781	17,986
2009	1,937	4,709	3,747	1,919	2,917	1,776	844	17,849
2010	1,974	4,817	3,773	1,896	3,081	1,685	971	18,197
2011	2,093	4,779	3,895	1,870	3,187	1,739	1,446	19,009
2012	2,140	4,884	4,124	1,938	3,484	1,816	1,744	20,130
2013	2,260	4,772	4,362	1,896	3,694	1,817	1,692	20,493

Note: Students are reported in the college in which they are enrolled. This page includes students enrolled at OSU-Tulsa. Student Profile books prior to Fall 2003 do not contain OSU-Tulsa students on this page.

**ENROLLMENT CHANGES
OKLAHOMA STATE UNIVERSITY
FALL SEMESTERS 2008 AND 2013**

	2008	2013	% Change
<u>UNDERGRADUATE MAJORS</u>			
Agricultural Sciences & Natural Resources	1,907	2,260	18.5%
Arts & Sciences	4,857	4,772	-1.8%
Spears School of Business	3,927	4,362	11.1%
Education	1,911	1,896	-0.8%
Engineering, Architecture, & Technology	2,780	3,694	32.9%
Human Sciences	1,823	1,817	-0.3%
LASSO Center	781	1,692	116.6%
<u>AGE</u>			
18 & Under	1,756	2,245	27.8%
19	2,902	3,663	26.2%
20	2,988	3,668	22.8%
21	3,245	3,746	15.4%
22	2,878	2,926	1.7%
23-29	5,907	6,421	8.7%
30-39	1,896	2,132	12.4%
40 & Over	1,196	1,138	-4.8%
<u>CLASSIFICATION</u>			
New Freshmen	3,054	3,802	24.5%
Other Freshmen	759	793	4.5%
Sophomores*	3,898	4,691	20.3%
Juniors*	4,814	5,092	5.8%
Seniors	5,176	5,882	13.6%
Specials	696	476	-31.6%
Graduates	4,052	4,854	19.8%
Professional	319	349	9.4%
<u>RESIDENT STATUS</u>			
In-State	17,134	17,299	1.0%
Out-of-State	3,884	6,699	72.5%
International	1,750	1,941	10.9%
<u>ETHNICITY</u>			
White	17,172	18,015	4.9%
African American	930	1,157	24.4%
Native American	1,964	1,394	-29.0%
Hispanic	566	1,151	103.4%
Asian	386	424	9.8%
Pacific Islander	N/A	9	N/A
Multiracial	N/A	1,638	N/A
International	1,750	1,941	10.9%
Unknown	N/A	210	N/A
<u>GENDER</u>			
Female	11,000	12,510	13.7%
Male	11,768	13,429	14.1%
OVERALL ENROLLMENT	22,768	25,939	13.9%

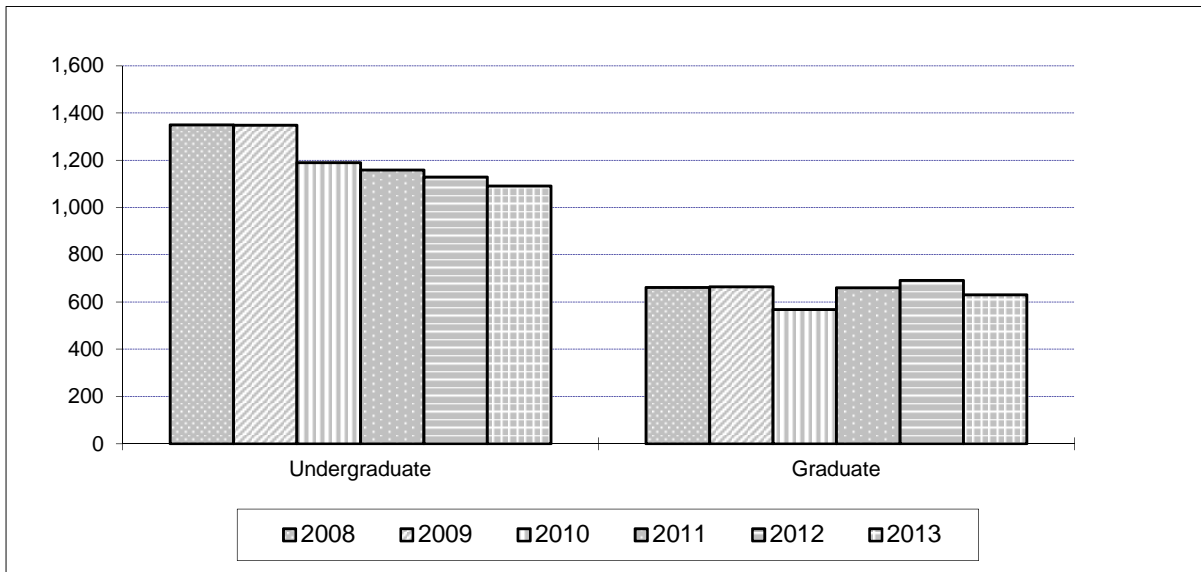
Note: This table includes professional students and OSU-Tulsa students. Student Profile books prior to Fall 2003 do not contain OSU-Tulsa students on this page.

* 65 sophomores and 5 juniors for 2013 and 18 sophomores and 1 junior for 2008 are in their first year of college and thus listed in other tables as new freshmen.

* Student Profile books prior to Fall 2003 include non-degree-seeking new freshmen in the New Freshmen counts.

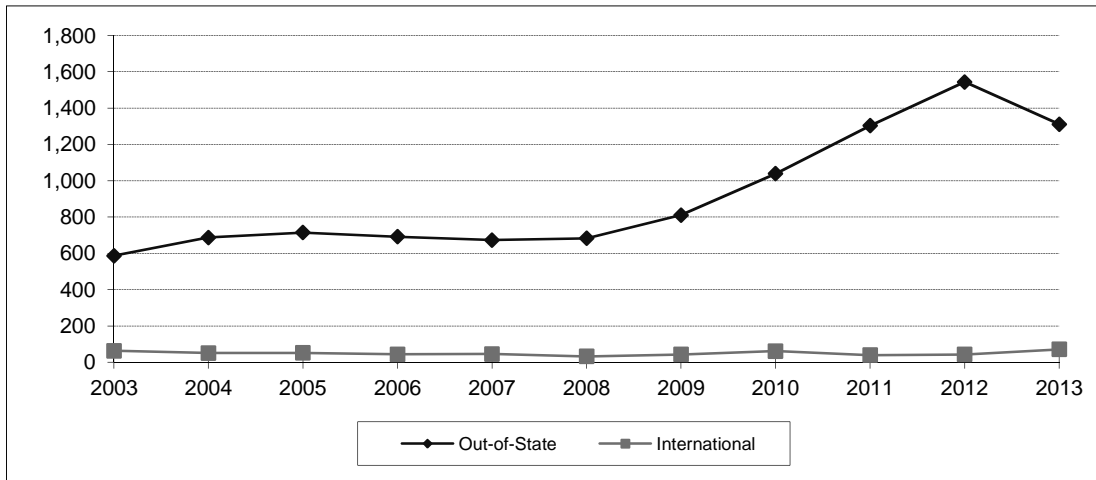
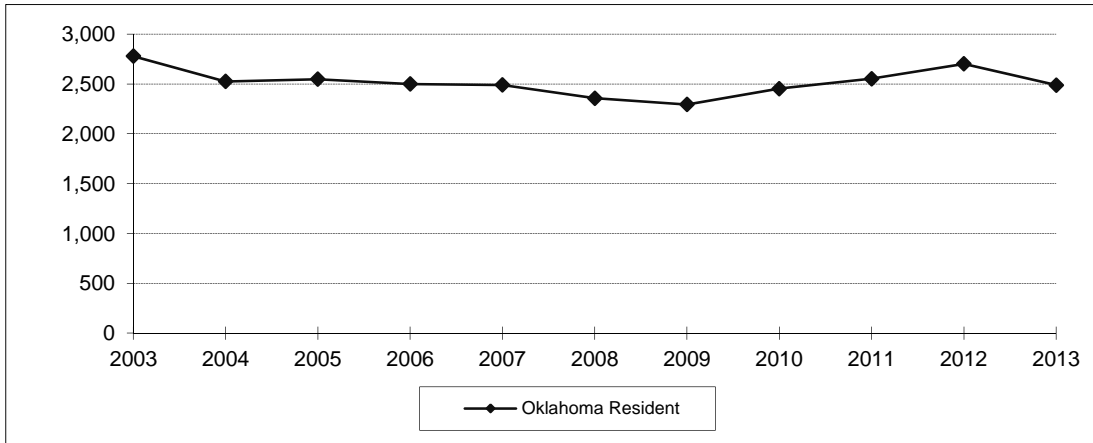
* Student Profile books prior to Fall 2006 include new concurrent high school students in the New Freshmen counts.

**ENROLLMENT CHANGES
OKLAHOMA STATE UNIVERSITY AT TULSA
FALL SEMESTERS 2009 THROUGH 2013**



Classification	2008	2009	2010	2011	2012	2013	% Change 2012 to 2013
Undergraduate	1,350	1,349	1,190	1,159	1,130	1,092	-3.4%
Freshman	10	20	3	4	3	4	33.3%
Sophomore	103	121	77	67	75	74	-1.3%
Junior	534	484	442	405	416	393	-5.5%
Senior	659	691	642	665	620	586	-5.5%
Special	44	33	26	18	16	35	118.8%
Graduate	662	665	569	661	692	631	-8.8%
Special	143	164	119	121	131	93	-29.0%
Master	399	381	329	418	452	421	-6.9%
Doctorate	120	120	121	122	109	117	7.3%
Grand Total	2,012	2,014	1,759	1,820	1,822	1,723	-5.4%

**NEW FRESHMEN ENROLLMENT BY RESIDENCY
OKLAHOMA STATE UNIVERSITY
FALL SEMESTERS 2003 THROUGH 2013**



Fall Semester	Oklahoma Resident	Out-of-State	International	Total
2003	2,779	587	64	3,430
2004	2,526	687	51	3,264
2005	2,548	715	52	3,315
2006	2,500	692	44	3,236
2007	2,490	673	46	3,209
2008	2,357	683	33	3,073
2009	2,294	811	43	3,148
2010	2,453	1,039	62	3,554
2011	2,553	1,303	40	3,896
2012	2,702	1,544	43	4,289
2013	2,489	1,311	72	3,872

Note: This table includes students at OSU-Tulsa, but does not include non-degree-seeking new freshmen and new concurrent high school students.

Student Profile books prior to Fall 2003 do not contain OSU-Tulsa students on this page.

Student Profile books prior to Fall 2006 contain new concurrent high school students on this page.

