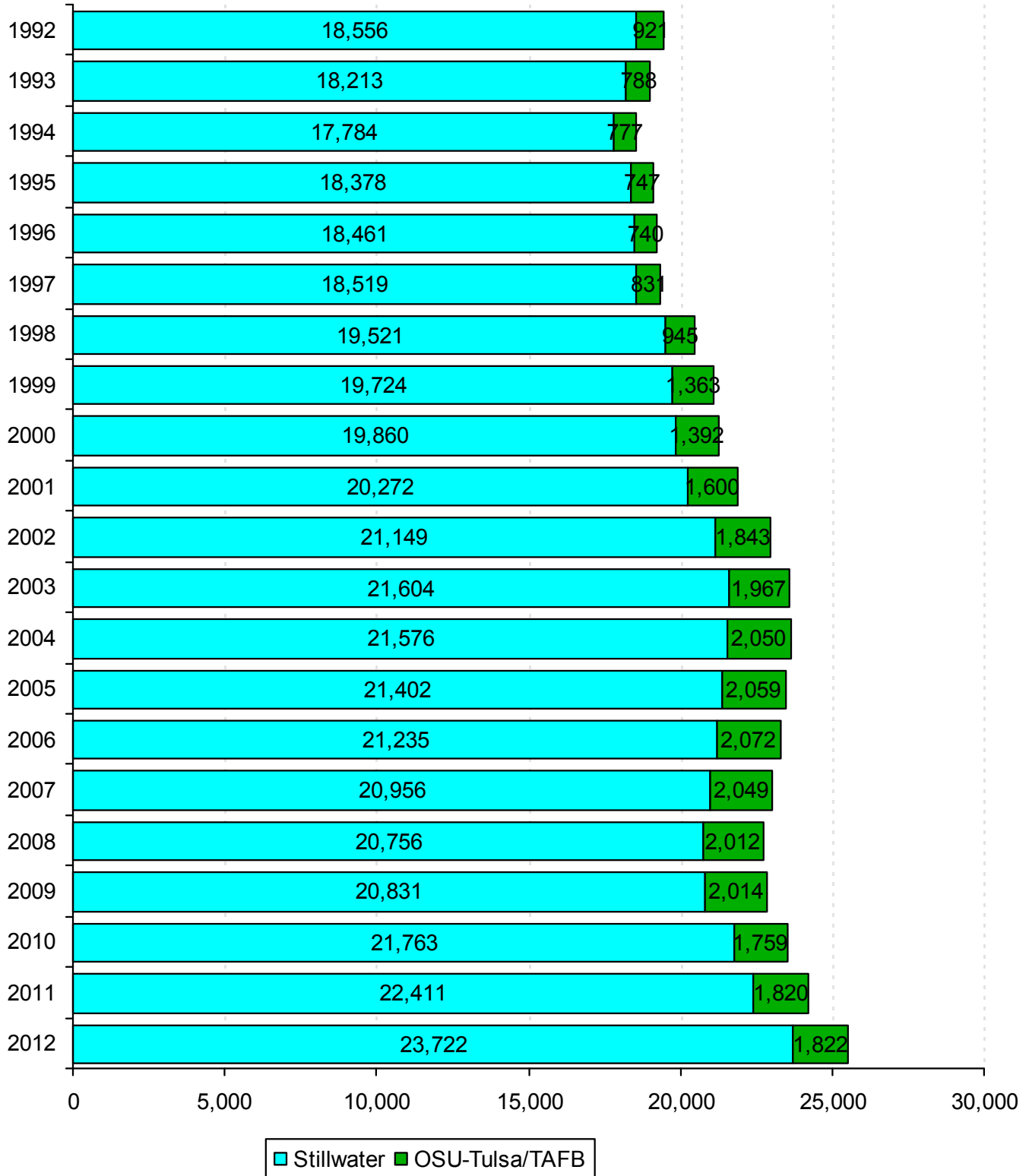
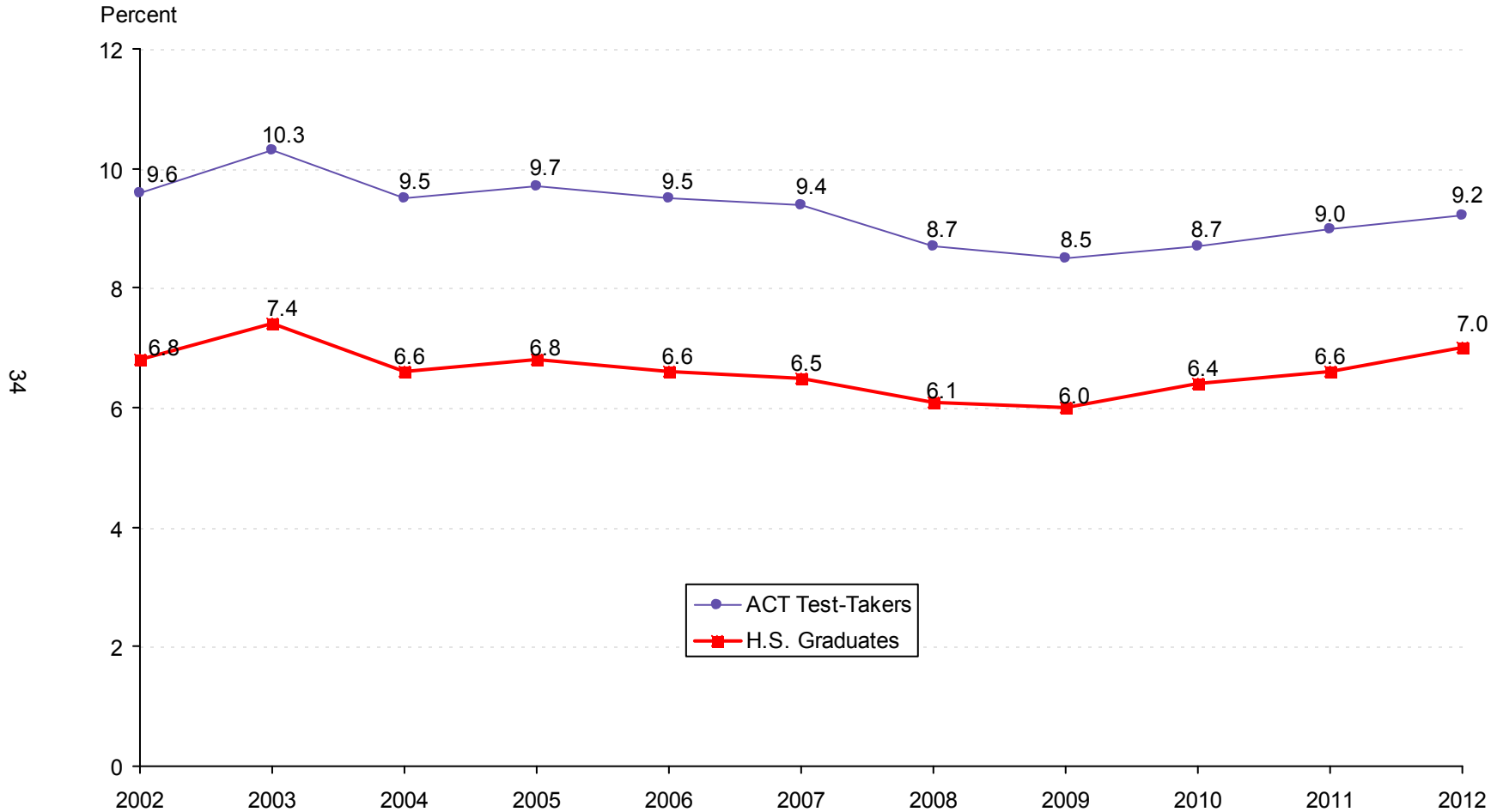


ENROLLMENT TRENDS

STILLWATER AND TULSA CAMPUS ENROLLMENT
OKLAHOMA STATE UNIVERSITY
FALL SEMESTERS 1992 THROUGH 2012



OKLAHOMA STATE UNIVERSITY SHARE OF THE MARKET
RATIO OF BEGINNING RESIDENT FRESHMEN
TO OKLAHOMA HIGH SCHOOL SPRING GRADUATES AND ACT TEST-TAKERS
OKLAHOMA STATE UNIVERSITY
FALL SEMESTERS 2002 THROUGH 2012



Note: Total Oklahoma high school graduates for 2012 = 38,639; total Oklahoma ACT test-takers = 29,342. The beginning resident freshman count for all years include OSU-Tulsa students, but excludes non-degree-seeking and first time concurrent high school resident students. (See Page 43).

Source: *Oklahoma High School Graduates-Projections*, Oklahoma State Regents for Higher Education, and *ACT Profile Report – State, Graduating Class 2012, Oklahoma*.

**ENROLLMENT BY TYPE OF ADMISSION
OKLAHOMA STATE UNIVERSITY
FALL SEMESTERS 2002 THROUGH 2012**

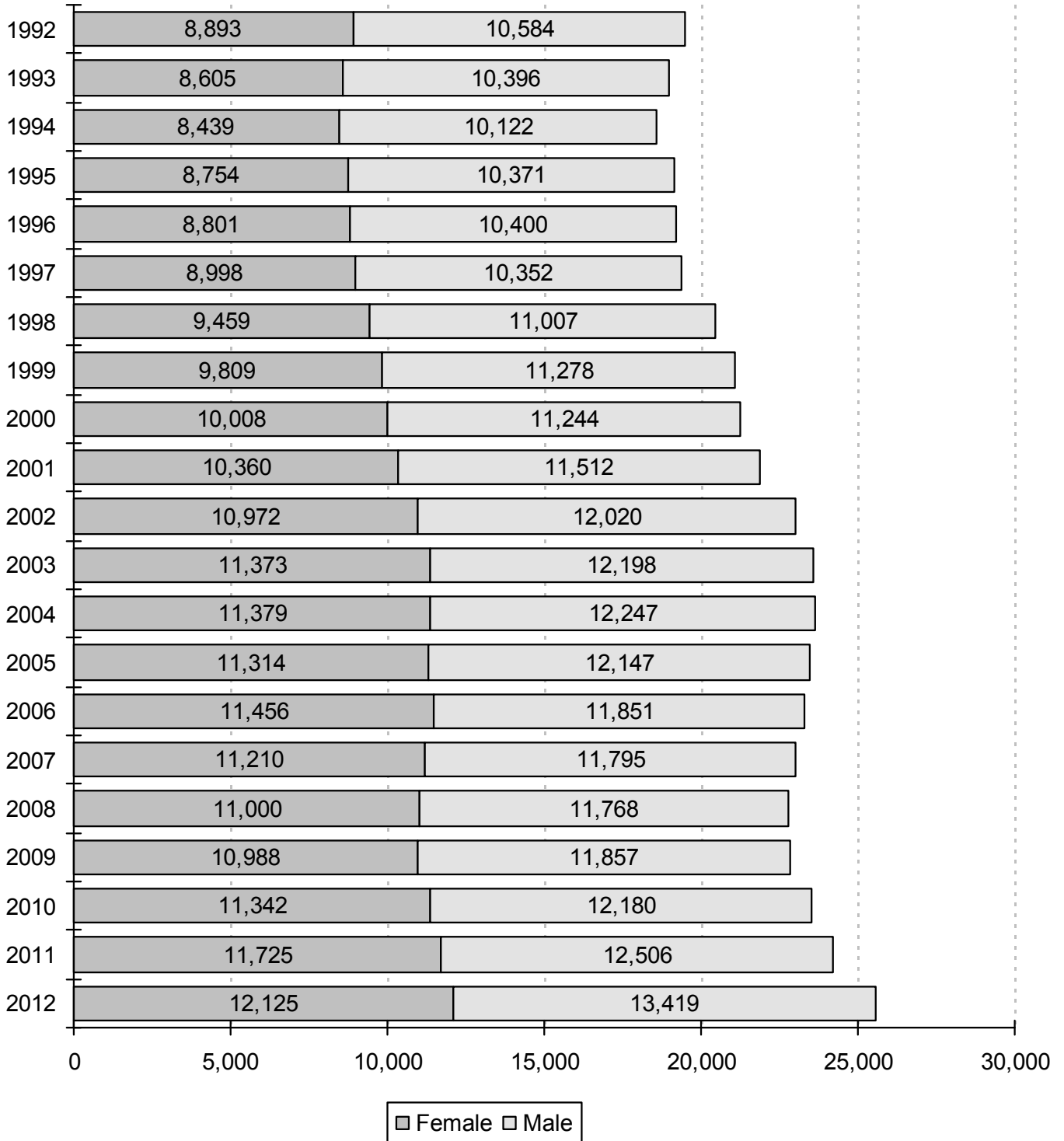
| Fall | New Freshmen* % Inc / Dec | Continuing % Inc / Dec | Readmission % Inc / Dec | New Transfer % Inc / Dec | Non-Degree % Inc / Dec | Concurrent % Inc / Dec | Total % Inc / Dec |
|------|---------------------------------|------------------------------|-------------------------------|--------------------------------|------------------------------|------------------------------|-------------------------|
| 2002 | 3,201 | 15,753 | 1,089 | 2,506 | 84 | 67 0.0% | 22,700 |
| 2003 | 3,430 7.2% | 16,106 2.2% | 941 -13.6% | 2,675 6.7% | 54 -35.7% | 68 1.5% | 23,274 2.5% |
| 2004 | 3,264 -4.8% | 16,274 1.0% | 874 -7.1% | 2,764 3.3% | 87 61.1% | 67 -1.5% | 23,330 0.2% |
| 2005 | 3,315 1.6% | 16,180 -0.6% | 780 -10.8% | 2,754 -0.4% | 80 -8.0% | 56 -16.4% | 23,165 -0.7% |
| 2006 | 3,236 -2.4% | 16,189 0.1% | 648 -16.9% | 2,789 1.3% | 57 -28.8% | 80 42.9% | 22,999 -0.7% |
| 2007 | 3,209 -0.8% | 16,016 -1.1% | 590 -9.0% | 2,715 -2.7% | 69 21.1% | 94 17.5% | 22,693 -1.3% |
| 2008 | 3,073 -4.2% | 15,812 -1.3% | 621 5.3% | 2,658 -2.1% | 192 178.3% | 93 -1.1% | 22,449 -1.1% |
| 2009 | 3,148 2.4% | 15,564 -1.6% | 709 14.2% | 2,852 7.3% | 164 -14.6% | 79 -15.1% | 22,516 0.3% |
| 2010 | 3,554 12.9% | 15,899 2.2% | 508 -28.3% | 3,005 5.4% | 124 -24.4% | 88 11.4% | 23,178 2.9% |
| 2011 | 3,896 9.6% | 16,315 2.6% | 510 0.4% | 2,914 -3.0% | 146 17.7% | 101 14.8% | 23,882 3.0% |
| 2012 | 4,289 10.1% | 16,986 4.1% | 524 2.7% | 3,175 9.0% | 130 -11.0% | 88 -12.9% | 25,192 5.5% |

Note: This table excludes 352 professional students for Fall 2012. However, this table does include OSU-Tulsa figures for all years listed and will not match the figures for this page in the Student Profile books prior to Fall 2003. The percentage increase or decrease in enrollment between two semesters is shown in the "% Inc / Dec" column. Example: There was a 10.1% increase in enrollment of new freshmen from Fall 2011 to Fall 2012.

* New freshmen counts exclude concurrent high school students and non-degree-seeking students for all years listed.

Student Profile books prior to Fall 2006 include new concurrent high school students in the new freshmen counts.

ENROLLMENT BY GENDER
OKLAHOMA STATE UNIVERSITY
FALL SEMESTERS 1992 THROUGH 2012



Note: This chart includes professional students and OSU-Tulsa students for all years listed. Hence, these figures will not match the figures in the Student Profile books prior to 2003.

**ENROLLMENT BY CLASSIFICATION
OKLAHOMA STATE UNIVERSITY
FALL SEMESTERS 1992 THROUGH 2012**

| Year | Freshmen | Sophomores | Juniors | Seniors | Special Undergrads | Graduates | Professional | On-Campus Total | Off-Campus OSU-T & TAFB | Grand Total |
|------|----------|------------|---------|---------|--------------------|-----------|--------------|-----------------|-------------------------|-------------|
| 1992 | 3,251 | 3,294 | 3,678 | 4,285 | 20 | 3,759 | 269 | 18,556 | 921 | 19,477 |
| 1993 | 3,161 | 3,200 | 3,727 | 4,195 | 22 | 3,636 | 272 | 18,213 | 788 | 19,001 |
| 1994 | 3,187 | 3,034 | 3,612 | 4,215 | 41 | 3,424 | 271 | 17,784 | 777 | 18,561 |
| 1995 | 3,446 | 3,040 | 3,646 | 4,273 | 34 | 3,664 | 275 | 18,378 | 747 | 19,125 |
| 1996 | 3,427 | 3,226 | 3,508 | 4,311 | 47 | 3,658 | 284 | 18,461 | 740 | 19,201 |
| 1997 | 3,378 | 3,308 | 3,683 | 4,168 | 68 | 3,625 | 289 | 18,519 | 831 | 19,350 |
| 1998 | 3,535 | 3,464 | 3,874 | 4,379 | 70 | 3,902 | 297 | 19,521 | 945 | 20,466 |
| 1999 | 4,068 | 3,543 | 3,923 | 4,235 | 45 | 3,616 | 294 | 19,724 | 1,363 | 21,087 |
| 2000 | 4,148 | 3,765 | 3,834 | 4,339 | 46 | 3,436 | 292 | 19,860 | 1,392 | 21,252 |
| 2001 | 4,361 | 3,886 | 3,925 | 4,234 | 51 | 3,526 | 289 | 20,272 | 1,600 | 21,872 |
| 2002 | 4,473 | 3,944 | 4,115 | 4,458 | 49 | 3,818 | 292 | 21,149 | 1,843 | 22,992 |
| 2003 | 4,649 | 4,083 | 4,197 | 4,548 | 14 | 3,816 | 297 | 21,604 | 1,967 | 23,571 |
| 2004 | 4,462 | 4,056 | 4,266 | 4,604 | 105 | 3,787 | 296 | 21,576 | 2,050 | 23,626 |
| 2005 | 4,325 | 4,035 | 4,391 | 4,736 | 97 | 3,522 | 296 | 21,402 | 2,059 | 23,461 |
| 2006 | 4,143 | 4,099 | 4,383 | 4,658 | 109 | 3,535 | 308 | 21,235 | 2,072 | 23,307 |
| 2007 | 4,034 | 3,977 | 4,262 | 4,602 | 133 | 3,636 | 312 | 20,956 | 2,049 | 23,005 |
| 2008 | 3,803 | 3,795 | 4,280 | 4,517 | 241 | 3,801 | 319 | 20,756 | 2,012 | 22,768 |
| 2009 | 3,905 | 3,598 | 4,134 | 4,653 | 210 | 4,002 | 329 | 20,831 | 2,014 | 22,845 |
| 2010 | 4,289 | 3,700 | 4,123 | 4,709 | 186 | 4,412 | 344 | 21,763 | 1,759 | 23,522 |
| 2011 | 4,626 | 3,986 | 4,288 | 4,721 | 229 | 4,212 | 349 | 22,411 | 1,820 | 24,231 |
| 2012 | 5,088 | 4,237 | 4,611 | 4,862 | 202 | 4,370 | 352 | 23,722 | 1,822 | 25,544 |

37

Note: Effective 2000, Off-Campus OSU-T & Tinker Air Force Base column reflects OSU-Tulsa enrollment only.

**ENROLLMENT BY ETHNICITY
OKLAHOMA STATE UNIVERSITY
FALL SEMESTERS 2002 THROUGH 2012**

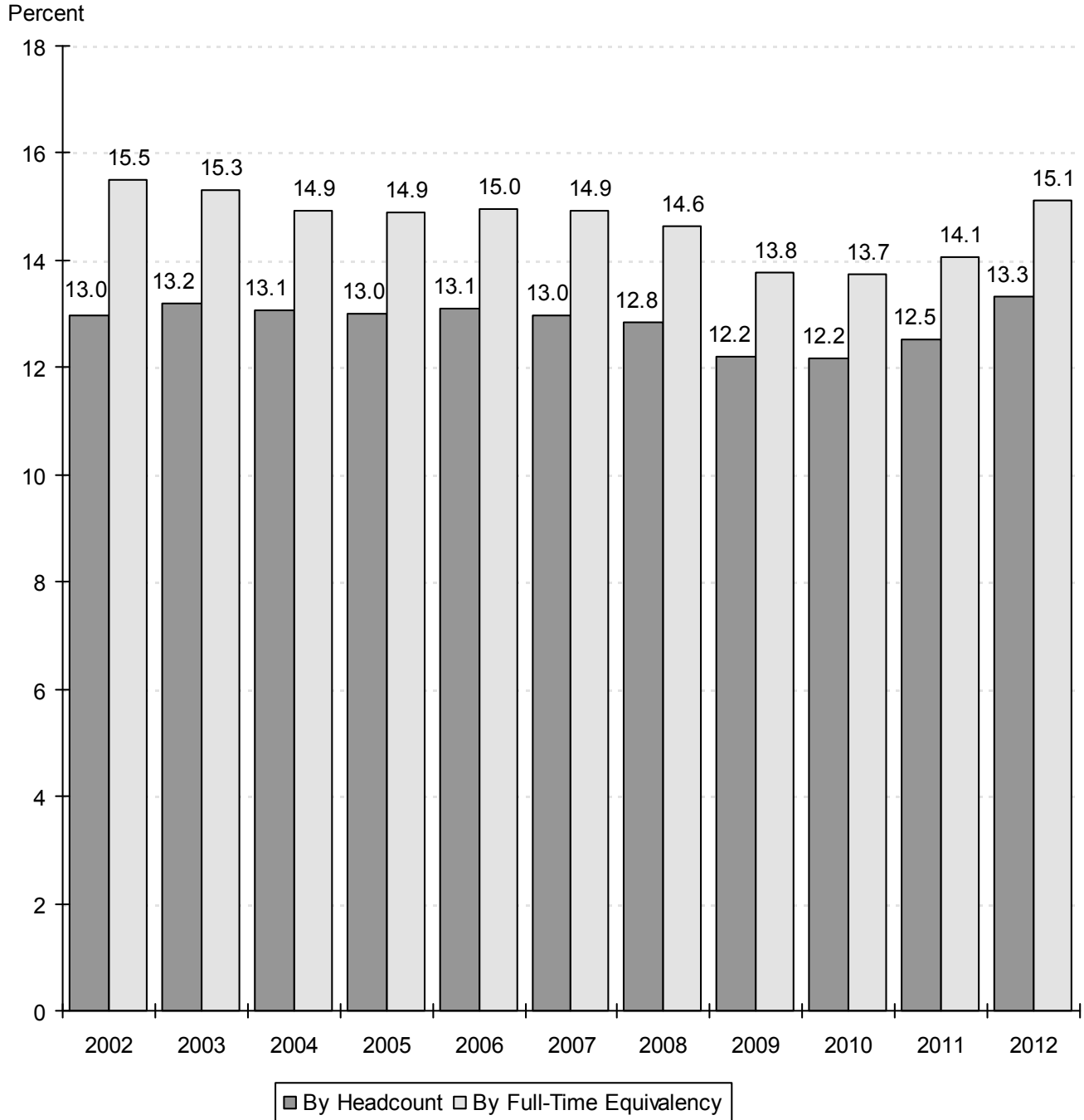
| Fall Semester | White | | African American | | Native American | | Hispanic | | Asian | | Pacific Islander | | Multiracial | | International | | Unknown | | Total |
|---------------|--------|-------|------------------|------|-----------------|------|----------|------|--------|------|------------------|------|-------------|------|---------------|------|---------|------|---------------|
| | Number | % | Number | % | Number | % | Number | % | Number | % | Number | % | Number | % | Number | % | Number | % | |
| 2002 | 17,475 | 76.0% | 766 | 3.3% | 1,784 | 7.8% | 415 | 1.8% | 375 | 1.6% | N/A | N/A | N/A | N/A | 2,177 | 9.5% | N/A | N/A | 22,992 |
| 2003 | 17,905 | 76.0% | 778 | 3.3% | 1,838 | 7.8% | 444 | 1.9% | 371 | 1.6% | N/A | N/A | N/A | N/A | 2,235 | 9.5% | N/A | N/A | 23,571 |
| 2004 | 17,943 | 75.9% | 918 | 3.9% | 1,896 | 8.0% | 447 | 1.9% | 389 | 1.6% | N/A | N/A | N/A | N/A | 2,033 | 8.6% | N/A | N/A | 23,626 |
| 2005 | 17,894 | 76.3% | 917 | 3.9% | 1,973 | 8.4% | 523 | 2.2% | 388 | 1.7% | N/A | N/A | N/A | N/A | 1,766 | 7.5% | N/A | N/A | 23,461 |
| 2006 | 17,769 | 76.2% | 959 | 4.1% | 1,990 | 8.5% | 533 | 2.3% | 411 | 1.8% | N/A | N/A | N/A | N/A | 1,645 | 7.1% | N/A | N/A | 23,307 |
| 2007 | 17,443 | 75.8% | 923 | 4.0% | 1,993 | 8.7% | 525 | 2.3% | 388 | 1.7% | N/A | N/A | N/A | N/A | 1,733 | 7.5% | N/A | N/A | 23,005 |
| 2008 | 17,172 | 75.4% | 930 | 4.1% | 1,964 | 8.6% | 566 | 2.5% | 386 | 1.7% | N/A | N/A | N/A | N/A | 1,750 | 7.7% | N/A | N/A | 22,768 |
| 2009 | 17,297 | 75.7% | 929 | 4.1% | 1,915 | 8.4% | 555 | 2.4% | 363 | 1.6% | N/A | N/A | N/A | N/A | 1,786 | 7.8% | N/A | N/A | 22,845 |
| 2010 | 17,599 | 74.8% | 1,029 | 4.4% | 2,032 | 8.6% | 594 | 2.5% | 399 | 1.7% | N/A | N/A | N/A | N/A | 1,869 | 7.9% | N/A | N/A | 23,522 |
| 2011* | 17,109 | 70.6% | 1,066 | 4.4% | 1,506 | 6.2% | 930 | 3.8% | 366 | 1.5% | 4 | 0.0% | 1,301 | 5.4% | 1,661 | 6.9% | 288 | 1.2% | 24,231 |
| 2012 | 17,976 | 70.4% | 1,144 | 4.5% | 1,403 | 5.5% | 1,039 | 4.1% | 420 | 1.6% | 7 | 0.0% | 1,551 | 6.1% | 1,758 | 6.9% | 246 | 1.0% | 25,544 |

Note: This table includes professional students and OSU-Tulsa students for all years listed. Student Profile books prior to Fall 2003 do not contain OSU-Tulsa students on this page.

* Starting from 2011, ethnicity codes were expanded to Pacific Islanders, Multiracial and Unknown.

**OSU ENROLLMENT AS A PERCENT OF TOTAL ENROLLMENT
IN THE OKLAHOMA STATE SYSTEMS (PUBLIC)**

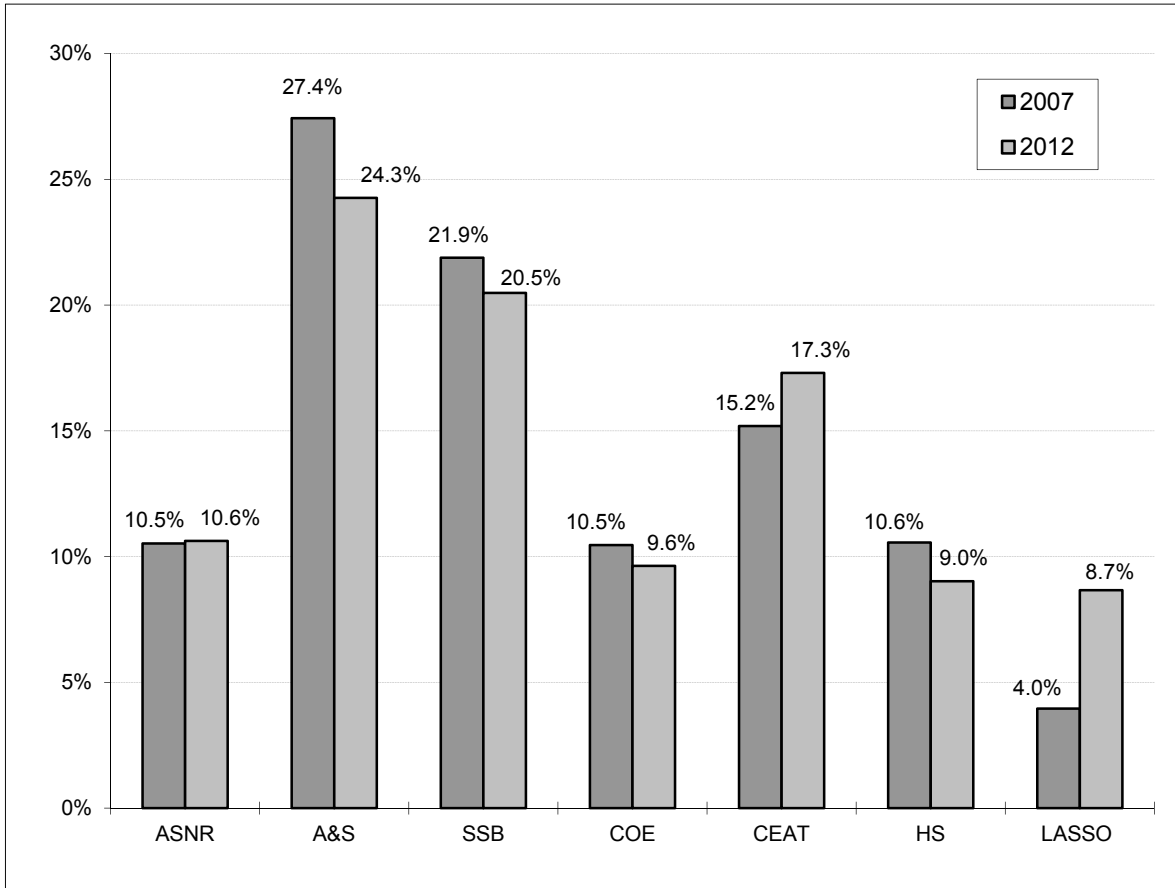
**OKLAHOMA STATE UNIVERSITY
FALL SEMESTERS 2002 THROUGH 2012**



Source: Preliminary Enrollment Report for Oklahoma Higher Education Fall 2012,
Oklahoma State Regents for Higher Education.

Note: Total Enrollment in the Oklahoma State Systems (Public) excludes interns and residents. Student Profile books prior to Fall 2008 included interns and residents in the total headcount enrollment.

**COMPARISON OF DISTRIBUTION OF UNDERGRADUATE MAJORS BY COLLEGE
OKLAHOMA STATE UNIVERSITY
FALL SEMESTERS 2007 AND 2012**



**UNDERGRADUATE MAJORS BY COLLEGE
OKLAHOMA STATE UNIVERSITY
FALL SEMESTERS 2007 THROUGH 2012**

| Year | Ag. Sci. & Nat. Res. | Arts & Sciences | Spears Sch. of Bus. | Education | Engr., Arch., & Tech. | Human Sciences | LASSO Center | Total |
|------|----------------------|-----------------|---------------------|-----------|-----------------------|----------------|--------------|---------------|
| 2007 | 1,933 | 5,038 | 4,019 | 1,922 | 2,790 | 1,939 | 727 | 18,368 |
| 2008 | 1,907 | 4,857 | 3,927 | 1,911 | 2,780 | 1,823 | 781 | 17,986 |
| 2009 | 1,937 | 4,709 | 3,747 | 1,919 | 2,917 | 1,776 | 844 | 17,849 |
| 2010 | 1,974 | 4,817 | 3,773 | 1,896 | 3,081 | 1,685 | 971 | 18,197 |
| 2011 | 2,093 | 4,779 | 3,895 | 1,870 | 3,187 | 1,739 | 1,446 | 19,009 |
| 2012 | 2,140 | 4,884 | 4,124 | 1,938 | 3,484 | 1,816 | 1,744 | 20,130 |

Note: Students are reported in the college in which they are enrolled. This page includes students enrolled at OSU-Tulsa. Student Profile books prior to Fall 2003 do not contain OSU-Tulsa students on this page.

**ENROLLMENT CHANGES
OKLAHOMA STATE UNIVERSITY
FALL SEMESTERS 2007 AND 2012**

| | 2007 | 2012 | % Change |
|---|---------------|---------------|--------------|
| <u>UNDERGRADUATE MAJORS</u> | | | |
| Agricultural Sciences & Natural Resources | 1,933 | 2,140 | 10.7% |
| Arts & Sciences | 5,038 | 4,884 | -3.1% |
| Spears School of Business | 4,019 | 4,124 | 2.6% |
| Education | 1,922 | 1,938 | 0.8% |
| Engineering, Architecture, & Technology | 2,790 | 3,484 | 24.9% |
| Human Sciences | 1,939 | 1,816 | -6.3% |
| LASSO Center | 727 | 1,744 | 139.9% |
| <u>AGE</u> | | | |
| 18 & Under | 1,833 | 2,433 | 32.7% |
| 19 | 2,981 | 3,773 | 26.6% |
| 20 | 3,056 | 3,517 | 15.1% |
| 21 | 3,250 | 3,427 | 5.4% |
| 22 | 2,914 | 2,751 | -5.6% |
| 23-29 | 5,956 | 6,296 | 5.7% |
| 30-39 | 1,819 | 2,149 | 18.1% |
| 40 & Over | 1,196 | 1,198 | 0.2% |
| <u>CLASSIFICATION</u> | | | |
| New Freshmen | 3,191 | 4,237 | 32.8% |
| Other Freshmen | 857 | 854 | -0.4% |
| Sophomores* | 4,105 | 4,312 | 5.0% |
| Juniors* | 4,777 | 5,027 | 5.2% |
| Seniors | 5,275 | 5,482 | 3.9% |
| Specials | 562 | 521 | -7.3% |
| Graduates | 3,926 | 4,759 | 21.2% |
| Professional | 312 | 352 | 12.8% |
| <u>RESIDENT STATUS</u> | | | |
| In-State | 17,596 | 17,494 | -0.6% |
| Out-of-State | 3,676 | 6,292 | 71.2% |
| International | 1,733 | 1,758 | 1.4% |
| <u>ETHNICITY</u> | | | |
| White | 17,443 | 17,976 | 3.1% |
| African American | 923 | 1,144 | 23.9% |
| Native American | 1,993 | 1,403 | -29.6% |
| Hispanic | 525 | 1,039 | 97.9% |
| Asian | 388 | 420 | 8.2% |
| Pacific Islander | N/A | 7 | N/A |
| Multiracial | N/A | 1,551 | N/A |
| International | 1,733 | 1,758 | 1.4% |
| Unknown | N/A | 246 | N/A |
| <u>GENDER</u> | | | |
| Female | 11,210 | 12,125 | 8.2% |
| Male | 11,795 | 13,419 | 13.8% |
| OVERALL ENROLLMENT | 23,005 | 25,544 | 11.0% |

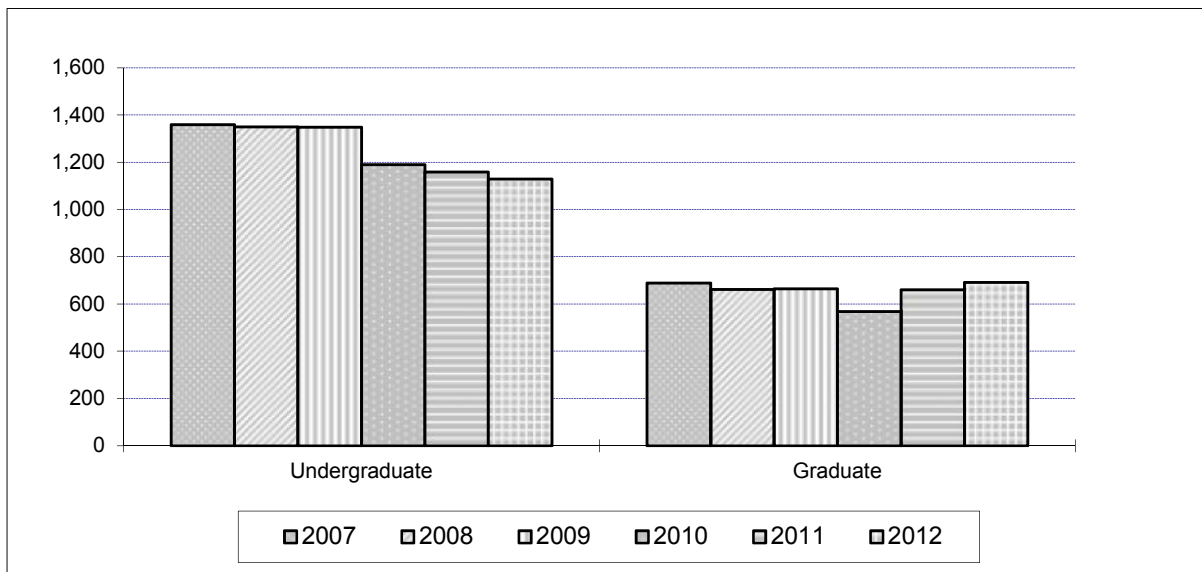
Note: This table includes professional students and OSU-Tulsa students. Student Profile books prior to Fall 2003 do not contain OSU-Tulsa students on this page.

* 47 sophomores and 5 juniors for 2012 and 17 sophomores and 1 junior for 2007 are in their first year of college and thus listed in other tables as new freshmen.

* Student Profile books prior to Fall 2003 include non-degree-seeking new freshmen in the New Freshmen counts

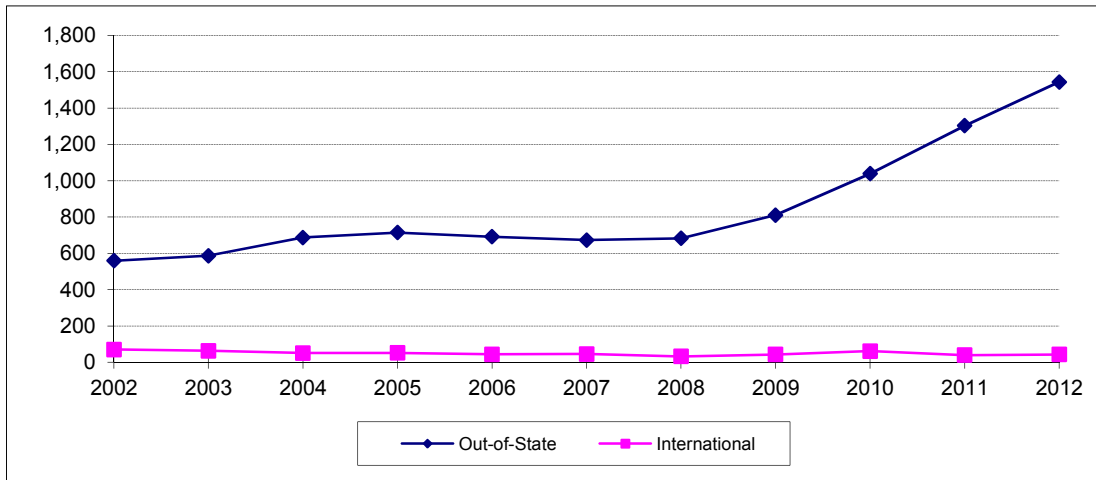
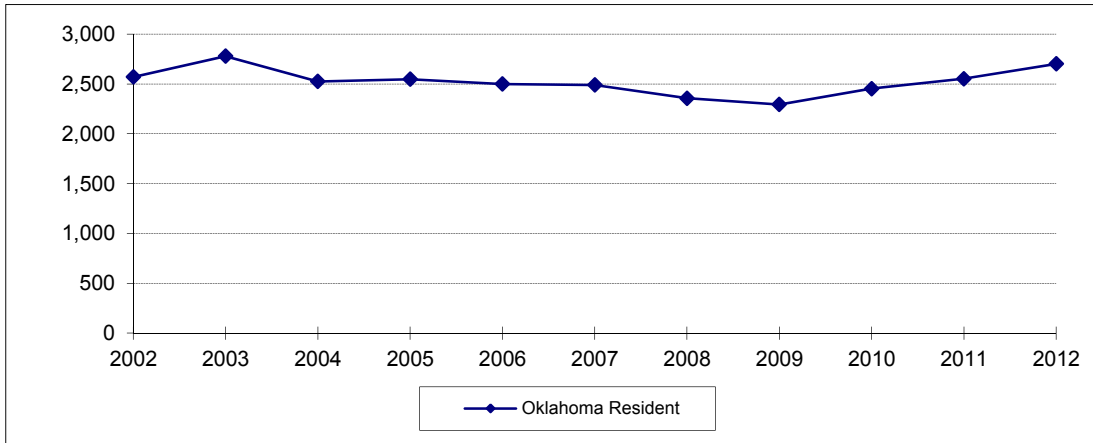
* Student Profile books prior to Fall 2006 include new concurrent high school students in the New Freshmen counts.

**ENROLLMENT CHANGES
OKLAHOMA STATE UNIVERSITY AT TULSA
FALL SEMESTERS 2007 THROUGH 2012**



| Classification | 2007 | 2008 | 2009 | 2010 | 2011 | 2012 | % Change 2011 to 2012 |
|----------------------|--------------|--------------|--------------|--------------|--------------|--------------|--------------------------|
| Undergraduate | 1,360 | 1,350 | 1,349 | 1,190 | 1,159 | 1,130 | -2.5% |
| Freshman | 14 | 10 | 20 | 3 | 4 | 3 | -25.0% |
| Sophomore | 128 | 103 | 121 | 77 | 67 | 75 | 11.9% |
| Junior | 515 | 534 | 484 | 442 | 405 | 416 | 2.7% |
| Senior | 673 | 659 | 691 | 642 | 665 | 620 | -6.8% |
| Special | 30 | 44 | 33 | 26 | 18 | 16 | -11.1% |
| Graduate | 689 | 662 | 665 | 569 | 661 | 692 | 4.7% |
| Special | 160 | 143 | 164 | 119 | 121 | 131 | 8.3% |
| Master | 417 | 399 | 381 | 329 | 418 | 452 | 8.1% |
| Doctorate | 112 | 120 | 120 | 121 | 122 | 109 | -10.7% |
| Grand Total | 2,049 | 2,012 | 2,014 | 1,759 | 1,820 | 1,822 | 0.1% |

**NEW FRESHMEN ENROLLMENT BY RESIDENCY
OKLAHOMA STATE UNIVERSITY
FALL SEMESTERS 2002 THROUGH 2012**



| Fall Semester | Oklahoma Resident | Out-of-State | International | Total |
|---------------|-------------------|--------------|---------------|-------|
| 2002 | 2,570 | 560 | 71 | 3,201 |
| 2003 | 2,779 | 587 | 64 | 3,430 |
| 2004 | 2,526 | 687 | 51 | 3,264 |
| 2005 | 2,548 | 715 | 52 | 3,315 |
| 2006 | 2,500 | 692 | 44 | 3,236 |
| 2007 | 2,490 | 673 | 46 | 3,209 |
| 2008 | 2,357 | 683 | 33 | 3,073 |
| 2009 | 2,294 | 811 | 43 | 3,148 |
| 2010 | 2,453 | 1,039 | 62 | 3,554 |
| 2011 | 2,553 | 1,303 | 40 | 3,896 |
| 2012 | 2,702 | 1,544 | 43 | 4,289 |

Note: This table includes students at OSU-Tulsa, but does not include non-degree-seeking new freshmen and new concurrent high school students.

Student Profile books prior to Fall 2003 do not contain OSU-Tulsa students on this page.

Student Profile books prior to Fall 2006 contain new concurrent high school students on this page.

