

ENROLLMENT PROJECTIONS

OKLAHOMA STATE UNIVERSITY FALL SEMESTER HEADCOUNT ENROLLMENT AND PROJECTIONS

Enrollment at Oklahoma State University showed yet another significant increase for the Fall 2012 semester with a headcount of 25,544. This represents an all-time high in the OSU-Stillwater/Tulsa enrollment. The continued increase in OSU enrollment was again buoyed by the recruitment efforts of the Office of Undergraduate Admissions, and consistent and significant increases in the freshmen classes OSU has enrolled the past three years. OSU welcomed 4,289 new freshmen, which constitutes an increase of 393 over Fall 2011 and is our largest freshmen class ever. This continues the trend of larger freshmen classes with the Fall 2012 new freshmen class being 40% larger than just four years ago. This number of new freshmen contributed to an overall increase in undergraduates of 1,121.

The projections for future years presented in this section are mathematical models based on past trends in applications, admitted students, and subsequent enrollments, as well as retention rates and forecasts of high school graduates. Forecasts for Oklahoma high school graduates show decreasing numbers over the next three years. Because the OSU freshman class is made up of approximately two-thirds Oklahoma residents, these forecasts are the primary source of projection numbers for freshman enrollment. The forecasts of Oklahoma high school graduates used in this section are based upon information from the Oklahoma State Department of Education and the State Regents for Higher Education. They assume that demographic trends such as immigration into and emigration out of the state will remain relatively constant.

Graduate enrollment at OSU also increased to 5,062 in Fall 2012. This represents an increase of almost 200 over Fall 2011 and also constitutes the largest number of graduate students ever enrolled at OSU.

In summary, several factors affect enrollment projections at OSU. Some of these factors depend on policy decisions originating with the Oklahoma State Regents for Higher Education and others depend on recruitment policies set by OSU administration. The impact of these policies, as well as changing admissions, enrollment, retention, scholarship, and recruiting practices, all have a role in determining future enrollment at Oklahoma State University. The Office of Institutional Research & Information Management will continue to monitor developments in these areas and assess their impact.

**OKLAHOMA HIGH SCHOOL GRADUATES AND ACT TEST-TAKERS
2002-2003 THROUGH 2011-2012 ACTUAL**

Year	HS Grads	ACT Takers	Percent
2002-2003	37,688	27,009	71.7%
2003-2004	38,109	26,556	69.7%
2004-2005	37,446	26,297	70.2%
2005-2006	37,940	26,425	69.6%
2006-2007	38,314	26,360	68.8%
2007-2008	38,915	27,131	69.7%
2008-2009	38,468	27,054	70.3%
2009-2010	39,808	28,343	71.2%
2010-2011	37,719	28,223	74.8%
2011-2012*	38,639	29,342	75.9%

Sources : Oklahoma High School Graduates - Projections, Oklahoma State Regents for Higher Education.

ACT Profile Report - State, Graduating Class 2012, Oklahoma.

* 2011-2012 high school graduate count is a projection.

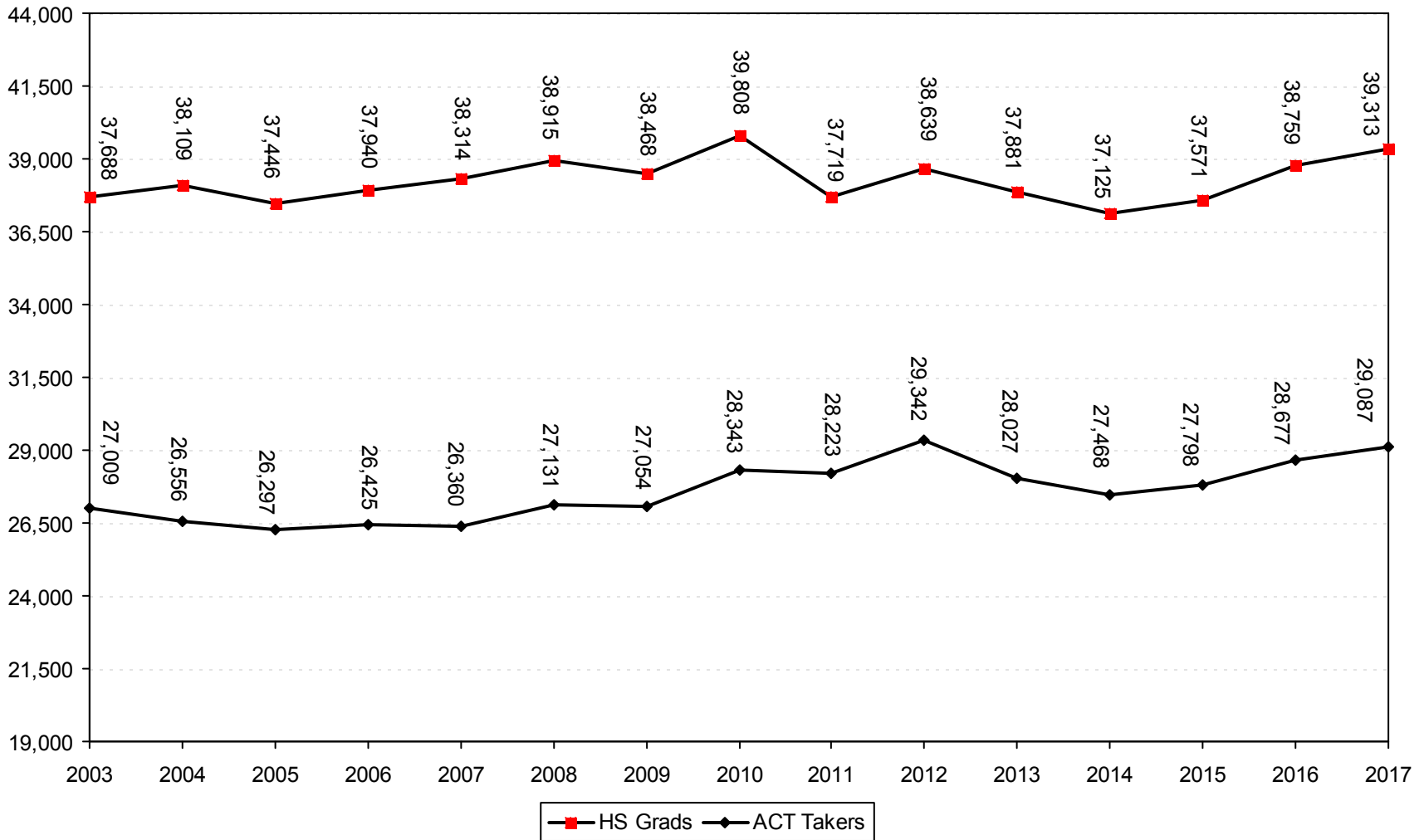
**PROJECTIONS OF OKLAHOMA HIGH SCHOOL GRADUATES
AND ACT TEST-TAKERS**

2012-2013	37,881	28,027	74.0%
2013-2014	37,125	27,468	74.0%
2014-2015	37,571	27,798	74.0%
2015-2016	38,759	28,677	74.0%
2016-2017	39,313	29,087	74.0%

Sources : Oklahoma High School Graduates - Projections, Oklahoma State Regents for Higher Education.

Projections of ACT test-takers are based on past patterns of participation.

**HIGH SCHOOL GRADUATES IN OKLAHOMA
2002-2003 THROUGH 2010-2011 ACTUAL, WITH PROJECTIONS TO 2016-2017**



Note: High school graduate numbers are revised based on the 2011 OSRHE Oklahoma High School Graduates – Projections chart. Projections from 2012 – 2017 are also from the 2011 OSRHE Oklahoma High School Graduates – Projections chart.

PROJECTION OF NEW FRESHMEN*
OKLAHOMA STATE UNIVERSITY
FALL SEMESTERS 2003 THROUGH 2012 (ACTUAL)
WITH PROJECTIONS THROUGH FALL 2017

Year	Resident	Nonresident US Citizen	International	Total
<u>Actual</u>				
2003	2,779	587	64	3,430
2004	2,526	687	51	3,264
2005	2,548	715	52	3,315
2006	2,500	692	44	3,236
2007	2,490	673	46	3,209
2008	2,357	683	33	3,073
2009	2,294	811	43	3,148
2010	2,453	1,039	62	3,554
2011	2,553	1,303	40	3,896
2012	2,702	1,544	43	4,289
<u>Projection</u>				
2013	2,686	1,637	55	4,378
2014	2,699	1,726	56	4,481
2015	2,731	1,742	57	4,530
2016	2,818	1,759	58	4,635
2017	2,858	1,777	59	4,694

Note: Projections are based on historical patterns of admitted new freshmen and enrolled new freshmen.

* New freshmen counts exclude concurrent high school students and non-degree-seeking students for all years listed.

**HEADCOUNT ENROLLMENT PROJECTIONS
OKLAHOMA STATE UNIVERSITY
FALL SEMESTERS 2003 THROUGH 2012 ACTUAL, WITH PROJECTIONS THROUGH FALL 2017**

Year	Freshman		Sophomore	Junior	Senior	Special Undergrad	Total Undergrad	Master	Doctorate	Special Graduate	Total Graduate	Total OSU-Stillwater	CVHS	OSU-T Undergrad	OSU-T Grad	Grand Total
	New	Other														
Actual																
2003	3,481	1,168	4,083	4,197	4,548	14	17,491	2,328	1,223	265	3,816	21,307	297	1,192	775	23,571
2004	3,263	1,199	4,056	4,266	4,604	105	17,493	2,204	1,201	382	3,787	21,280	296	1,296	754	23,626
2005	3,304	1,021	4,035	4,391	4,736	97	17,584	2,042	1,226	254	3,522	21,106	296	1,325	734	23,461
2006	3,221	922	4,099	4,383	4,658	109	17,392	2,005	1,239	291	3,535	20,927	308	1,345	727	23,307
2007	3,191	843	3,977	4,262	4,602	133	17,008	2,145	1,252	239	3,636	20,644	312	1,360	689	23,005
2008	3,054	749	3,795	4,280	4,517	241	16,636	2,212	1,321	268	3,801	20,437	319	1,350	662	22,768
2009	3,124	781	3,598	4,134	4,653	210	16,500	2,393	1,365	244	4,002	20,502	329	1,349	665	22,845
2010	3,519	770	3,700	4,123	4,709	186	17,007	2,661	1,465	286	4,412	21,419	344	1,190	569	23,522
2011	3,848	778	3,986	4,288	4,721	229	17,850	2,562	1,455	195	4,212	22,062	349	1,159	661	24,231
2012*	4,237	851	4,237	4,612	4,864	199	19,000	2,750	1,448	172	4,370	23,370	352	1,130	692	25,544
Projection																
2013	4,378	924	4,595	4,892	5,217	206	20,212	2,750	1,448	172	4,370	24,582	352	1,182	699	26,815
2014	4,481	943	4,756	5,208	5,438	206	21,032	2,778	1,448	172	4,398	25,430	352	1,206	706	27,694
2015	4,530	959	4,847	5,368	5,772	206	21,682	2,806	1,448	172	4,426	26,108	352	1,230	713	28,403
2016	4,635	968	4,896	5,458	5,940	206	22,103	2,834	1,448	172	4,454	26,557	352	1,255	720	28,884
2017	4,694	984	4,981	5,507	6,035	206	22,407	2,862	1,448	172	4,482	26,889	352	1,268	727	29,236

Note: New freshmen projections are based on historical patterns of admitted new freshmen and enrolled new freshmen. On-campus sophomore, junior, and senior projections are based on cohort survival rates.

* 47 sophomores and 5 juniors in this table are in their first year of college and are thus listed in other tables as new freshmen.

