

# ENROLLMENT PROJECTIONS



## **OKLAHOMA STATE UNIVERSITY FALL SEMESTER HEADCOUNT ENROLLMENT AND PROJECTIONS**

Enrollment at Oklahoma State University showed a significant increase for the Fall 2011 semester with a headcount of 24,231. This represents an all-time high in the OSU-Stillwater/Tulsa enrollment. This continued increase in OSU enrollment was again buoyed by the recruitment efforts of the Office of Undergraduate Admissions. OSU welcomed 3,896 new freshmen, which constitutes an increase of 342 over Fall 2010 and is our largest freshmen class since 1980. This continues the trend of larger numbers of new freshmen with the Fall 2011 new freshmen class being 27% larger than just 3 years ago. This number of new freshmen contributed to an overall increase in undergraduates of 812.

The projections for future years presented in this section are mathematical models based on past trends in applications, admitted students, and subsequent enrollments, as well as retention rates and forecasts of high school graduates. Forecasts for Oklahoma high school graduates show decreasing numbers over the next four years. Because the OSU freshman class is made up of approximately two-thirds Oklahoma residents, these forecasts are the primary source of projection numbers for freshman enrollment. The forecasts of Oklahoma high school graduates used in this section are based upon information from the Oklahoma State Department of Education and the State Regents for Higher Education. They assume that demographic trends such as immigration into and emigration out of the state will remain relatively constant.

Graduate enrollment at OSU leveled off and decreased by approximately 100 in Fall 2011. However, this still constitutes one of the highest graduate enrollments at OSU, second only to Fall 2010.

In summary, several factors affect enrollment projections at OSU. Some of these factors depend on policy decisions originating with the Oklahoma State Regents for Higher Education and others depend on recruitment policies set by OSU administration. The impact of these policies, as well as changing admissions, enrollment, retention, scholarship, and recruiting practices, all have a role in determining future enrollment at Oklahoma State University. The Office of Institutional Research & Information Management will continue to monitor developments in these areas and assess their impact.

**OKLAHOMA HIGH SCHOOL GRADUATES AND ACT TEST-TAKERS  
2001-2002 THROUGH 2010-2011 ACTUAL**

Year	HS Grads	ACT Takers	Percent
2001-2002	37,699	26,717	70.9%
2002-2003	37,688	27,009	71.7%
2003-2004	38,109	26,556	69.7%
2004-2005	37,446	26,297	70.2%
2005-2006	37,940	26,425	69.6%
2006-2007	38,314	26,360	68.8%
2007-2008	38,915	27,131	69.7%
2008-2009	38,468	27,054	70.3%
2009-2010	39,808	28,343	71.2%
2010-2011*	38,531	28,223	73.2%

*Sources* : Oklahoma High School Graduates - Projections, Oklahoma State Regents for Higher Education.

ACT Profile Report - State, Graduating Class 2011, Oklahoma.

\* 2010-2011 high school graduate count is a projection.

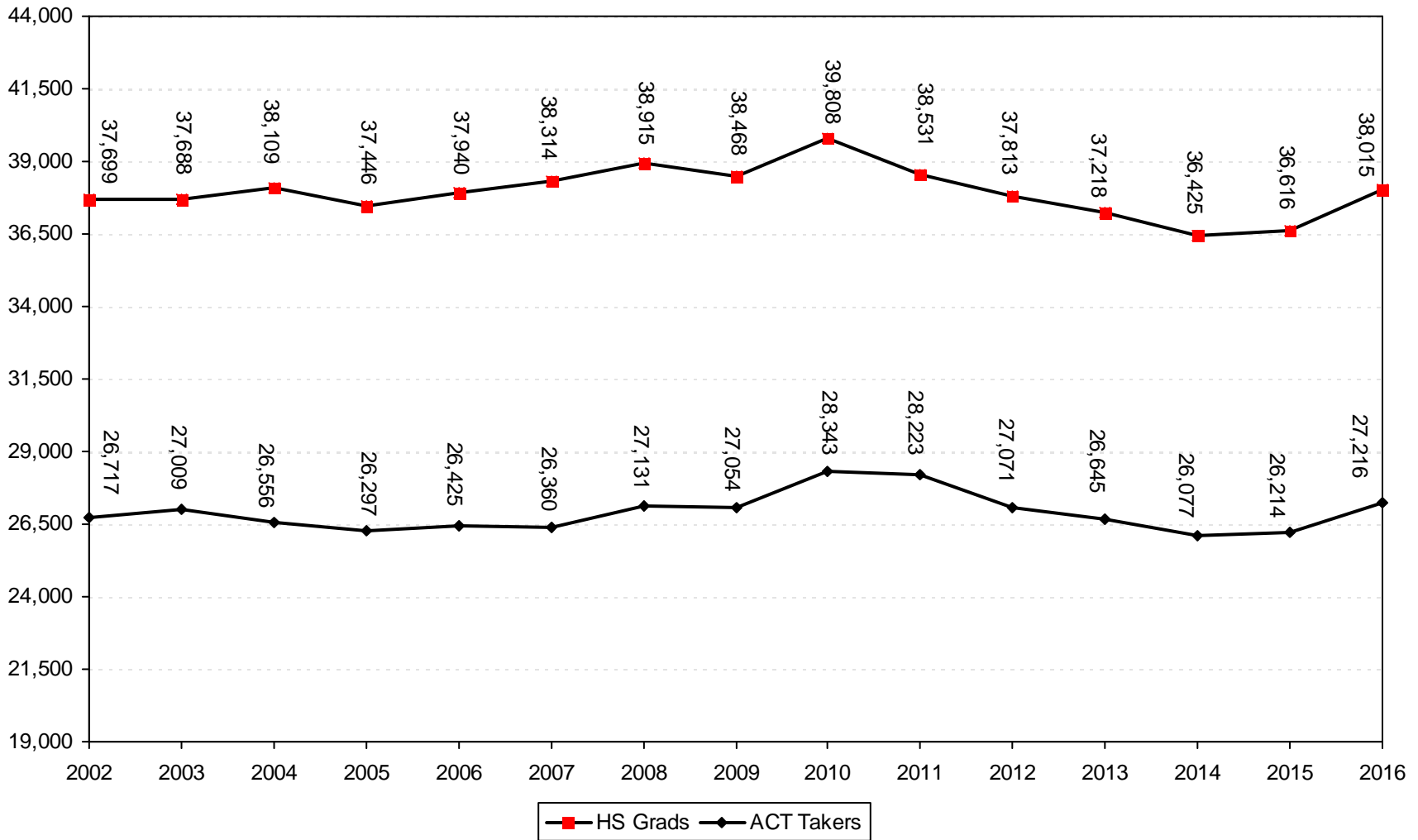
**PROJECTIONS OF OKLAHOMA HIGH SCHOOL GRADUATES  
AND ACT TEST-TAKERS**

2011-2012	37,813	27,071	71.6%
2012-2013	37,218	26,645	71.6%
2013-2014	36,425	26,077	71.6%
2014-2015	36,616	26,214	71.6%
2015-2016	38,015	27,216	71.6%

*Sources* : Oklahoma High School Graduates - Projections, Oklahoma State Regents for Higher Education.

Projections of ACT test-takers are based on past patterns of participation.

## HIGH SCHOOL GRADUATES IN OKLAHOMA 2001-2002 THROUGH 2009-2010 ACTUAL, WITH PROJECTIONS TO 2015-2016



Note: High school graduate numbers are revised based on the 2010 OSRHE Oklahoma High School Graduates – Projections chart. Projections from 2011 – 2016 are also from the 2010 OSRHE Oklahoma High School Graduates – Projections chart.

**PROJECTION OF NEW FRESHMEN\***  
**OKLAHOMA STATE UNIVERSITY**  
**FALL SEMESTERS 2002 THROUGH 2011 (ACTUAL)**  
**WITH PROJECTIONS THROUGH FALL 2016**

Year	Resident	Nonresident US Citizen	International	Total
<u>Actual</u>				
2002	2,570	560	71	3,201
2003	2,779	587	64	3,430
2004	2,526	687	51	3,264
2005	2,548	715	52	3,315
2006	2,500	692	44	3,236
2007	2,490	673	46	3,209
2008	2,357	683	33	3,073
2009	2,294	811	43	3,148
2010	2,453	1,039	62	3,554
2011	2,553	1,303	40	3,896
<u>Projection</u>				
2012	2,568	1,380	55	4,003
2013	2,527	1,423	55	4,005
2014	2,473	1,467	55	3,995
2015	2,487	1,513	55	4,055
2016	2,581	1,560	55	4,196

Note: Projections are based on historical patterns of admitted new freshmen and enrolled new freshmen.

\* New freshmen counts exclude concurrent high school students and non-degree-seeking students for all years listed.

**HEADCOUNT ENROLLMENT PROJECTIONS  
OKLAHOMA STATE UNIVERSITY  
FALL SEMESTERS 2002 THROUGH 2011 ACTUAL, WITH PROJECTIONS THROUGH FALL 2016**

Year	Freshman		Sophomore	Junior	Senior	Special Undergrad	Total Undergrad	Master	Doctorate	Special Graduate	Total Graduate	Total OSU-Stillwater	CVHS	OSU-T Undergrad	OSU-T Grad	Grand Total
	New	Other														
<b>Actual</b>																
2002	3,265	1,208	3,944	4,115	4,458	49	17,039	2,340	1,180	298	3,818	20,857	292	1,004	839	22,992
2003	3,481	1,168	4,083	4,197	4,548	14	17,491	2,328	1,223	265	3,816	21,307	297	1,192	775	23,571
2004	3,263	1,199	4,056	4,266	4,604	105	17,493	2,204	1,201	382	3,787	21,280	296	1,296	754	23,626
2005	3,304	1,021	4,035	4,391	4,736	97	17,584	2,042	1,226	254	3,522	21,106	296	1,325	734	23,461
2006	3,221	922	4,099	4,383	4,658	109	17,392	2,005	1,239	291	3,535	20,927	308	1,345	727	23,307
2007	3,191	843	3,977	4,262	4,602	133	17,008	2,145	1,252	239	3,636	20,644	312	1,360	689	23,005
2008	3,054	749	3,795	4,280	4,517	241	16,636	2,212	1,321	268	3,801	20,437	319	1,350	662	22,768
2009	3,124	781	3,598	4,134	4,653	210	16,500	2,393	1,365	244	4,002	20,502	329	1,349	665	22,845
2010	3,519	770	3,700	4,123	4,709	186	17,007	2,661	1,465	286	4,412	21,419	344	1,190	569	23,522
2011*	3,848	778	3,986	4,288	4,721	229	17,850	2,562	1,455	195	4,212	22,062	349	1,159	661	24,231
<b>Projection</b>																
2012	4,003	841	4,276	4,521	4,825	208	18,674	2,562	1,455	195	4,212	22,886	352	1,182	668	25,088
2013	4,005	865	4,403	4,856	5,071	208	19,408	2,562	1,455	195	4,212	23,620	352	1,206	675	25,853
2014	3,995	868	4,422	4,982	5,424	208	19,899	2,588	1,470	195	4,253	24,152	352	1,230	682	26,416
2015	4,055	867	4,417	5,001	5,557	208	20,105	2,614	1,485	195	4,294	24,399	352	1,255	689	26,695
2016	4,196	875	4,461	4,996	5,577	208	20,313	2,640	1,500	195	4,335	24,648	352	1,267	696	26,963

Note: New freshmen projections are based on historical patterns of admitted new freshmen and enrolled new freshmen. On-campus sophomore, junior, and senior projections are based on cohort survival rates.

\* 48 sophomores in this table are in their first year of college and are thus listed in other tables as new freshmen.

