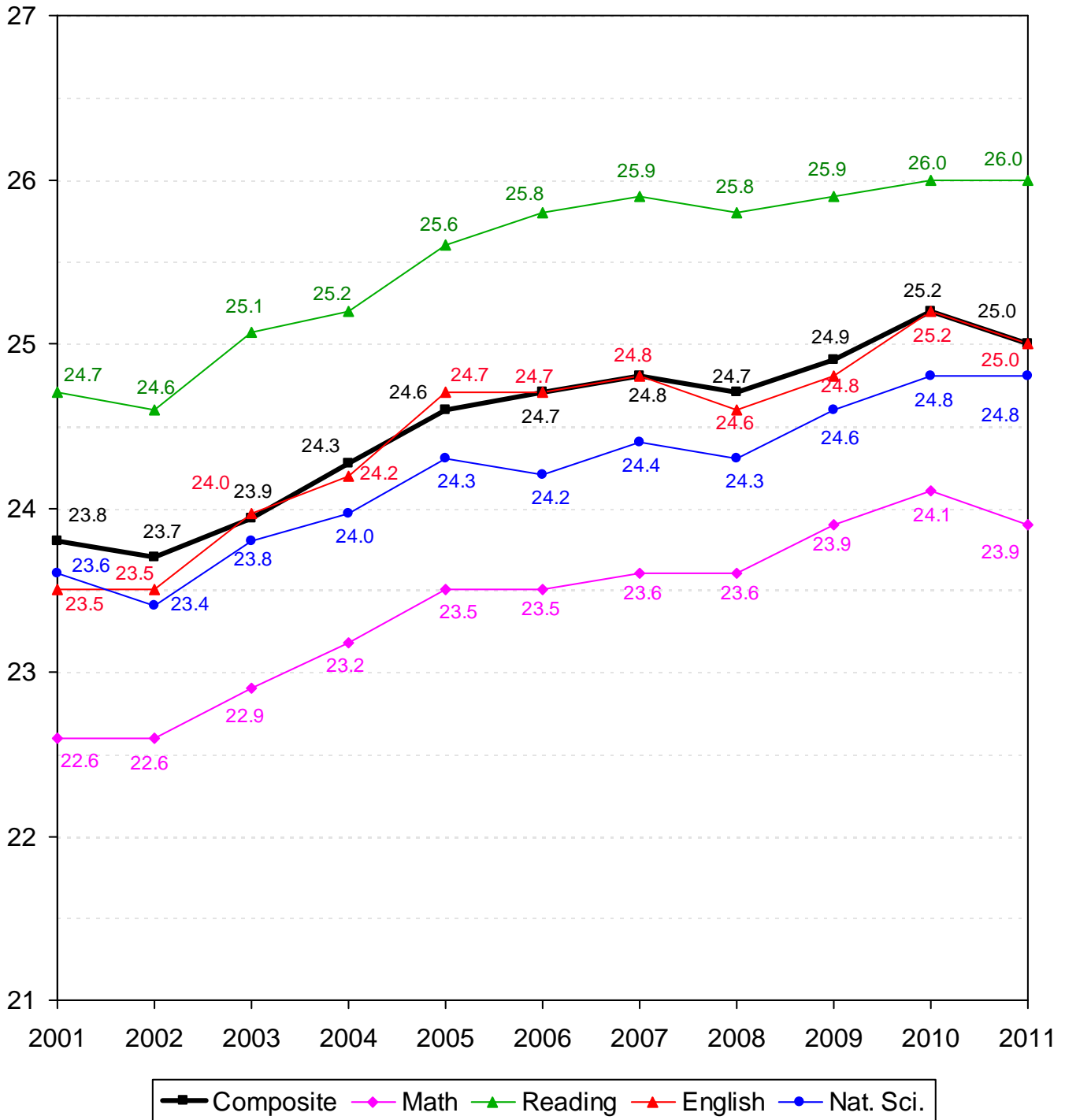


# ACADEMIC INFORMATION



**TEN-YEAR COMPARISON OF ACT SCORES FOR NEW FRESHMEN**  
**OKLAHOMA STATE UNIVERSITY**  
**FALL SEMESTERS 2001 THROUGH 2011**



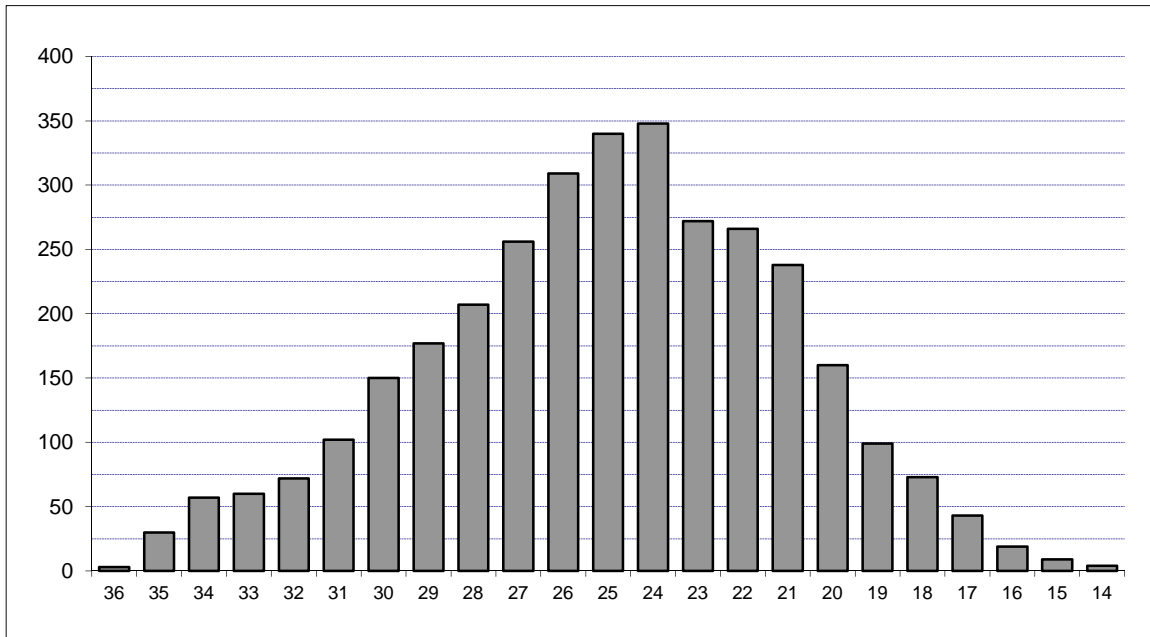
Note: Averages reflect the highest value for each subscore that a student received. Beginning in 2003, ACT composite scores are the average of the highest of each subscore received.

**COMPOSITE ACT AND SAT AVERAGES OF NEW FRESHMEN BY COLLEGE  
OKLAHOMA STATE UNIVERSITY  
FALL SEMESTER 2011**

College	ACT		SAT	
	Count	Composite	Count	Composite
Ag. Sciences & Natural Res.	373	25.3	57	1,149
Arts & Sciences	758	25.7	129	1,168
Spears School of Business	438	25.1	99	1,169
Education	242	24.6	34	1,120
Engineering & Architecture	536	28.1	104	1,222
Div. of Technology	49	24.7	11	1,122
Human Sciences	264	25.0	28	1,101
<b>Overall College Average</b>	<b>2,660</b>	<b>25.8</b>	<b>462</b>	<b>1,169</b>
University Academic Services	634	21.7	125	993
<b>Overall Average</b>	<b>3,294</b>	<b>25.0</b>	<b>587</b>	<b>1,132</b>

Note: Composite scores in this table are calculated using the highest subscores obtained for each student. If students have taken both the ACT and the SAT, only the higher score is reported.

**DISTRIBUTION OF NEW FRESHMEN BY COMPOSITE ACT SCORE  
OKLAHOMA STATE UNIVERSITY  
FALL SEMESTER 2011**



Composite ACT Score	Female	Male	Total	Percent	Cumulative Percent
36	0	3	3	0.09%	0.09%
35	5	25	30	0.91%	1.00%
34	23	34	57	1.73%	2.73%
33	21	39	60	1.82%	4.55%
32	29	43	72	2.19%	6.74%
31	47	55	102	3.10%	9.84%
30	79	71	150	4.55%	14.39%
29	94	83	177	5.37%	19.76%
28	107	100	207	6.28%	26.05%
27	134	122	256	7.77%	33.82%
26	157	152	309	9.38%	43.20%
25	196	144	340	10.32%	53.52%
24	179	169	348	10.56%	64.09%
23	141	131	272	8.26%	72.34%
22	151	115	266	8.08%	80.42%
21	134	104	238	7.23%	87.64%
20	98	62	160	4.86%	92.50%
19	60	39	99	3.01%	95.51%
18	39	34	73	2.22%	97.72%
17	22	21	43	1.31%	99.03%
16	11	8	19	0.58%	99.61%
15	6	3	9	0.27%	99.88%
14	4	0	4	0.12%	100.0%
<b>Total</b>	<b>1,737</b>	<b>1,557</b>	<b>3,294</b>	<b>100.0%</b>	<b>100.0%</b>

Note: ACT scores are only included in this table if they represent the highest test score available for the student. If the student's SAT score (converted to an ACT equivalent) is higher, then the ACT score is not included here.

**ACT AND SAT AVERAGES OF NEW FRESHMEN BY ETHNICITY AND GENDER  
OKLAHOMA STATE UNIVERSITY  
FALL SEMESTER 2011**

Ethnicity	ACT		SAT	
	Count	Composite	Count	Composite
White	2,443	25.6	435	1,149
African American	198	21.1	51	1,014
Native American	315	24.3	16	1,139
Hispanic	116	23.3	35	1,086
Asian	55	24.7	14	1,119
Pacific Islander	1	24.0	-	-
Multiracial	153	24.8	15	1,135
International	7	25.4	20	1,149
Unknown	6	27.2	1	940
<b>Gender</b>				
Female	1,737	24.7	257	1,117
Male	1,557	25.4	330	1,143
<b>Total</b>	<b>3,294</b>	<b>25.0</b>	<b>587</b>	<b>1,132</b>

*Note:* Composite scores in this table are calculated using the highest subscores obtained for each student. If students have taken both the ACT and the SAT, only the higher score is reported.

**OKLAHOMA HIGH SCHOOL ACT PARTICIPATION STATISTICS  
OKLAHOMA STATE UNIVERSITY  
2006 THROUGH 2011**

	2006		2007		2008		2009		2010		2011	
High School Graduates in Oklahoma <sup>1</sup>	37,940		38,314		38,915		38,468		39,808		38,531	
Number of Oklahoma H.S. Students Taking ACT <sup>2*</sup>	26,425		26,360		27,131		27,054		28,343		28,223	
Total ACT Scores Received by OSU <sup>2**</sup>	9,256		9,167		8,135		7,564		7,946		7,836	
1st Choice / % of Scores Received	3,281	35.4%	3,421	37.3%	2,942	36.2%	2,671	35.3%	2,908	36.6%	2,983	38.1%
2nd - 6th Choices / % of Scores Received	5,975	64.6%	5,746	62.7%	5,193	63.8%	4,893	64.7%	5,038	63.4%	4,853	61.9%
Applications Received by OSU	6,730		6,415		6,406		7,561		8,696		9,914	
New Freshmen Accepted by OSU	5,853		5,651		5,702		6,537		7,079		8,099	
% of Applications Received	87.0%		88.1%		89.0%		86.5%		81.4%		81.7%	
New Freshmen Enrolled at OSU	3,236		3,209		3,073		3,148		3,554		3,896	
% of Freshmen Accepted	55.3%		56.8%		53.9%		48.2%		50.2%		48.1%	

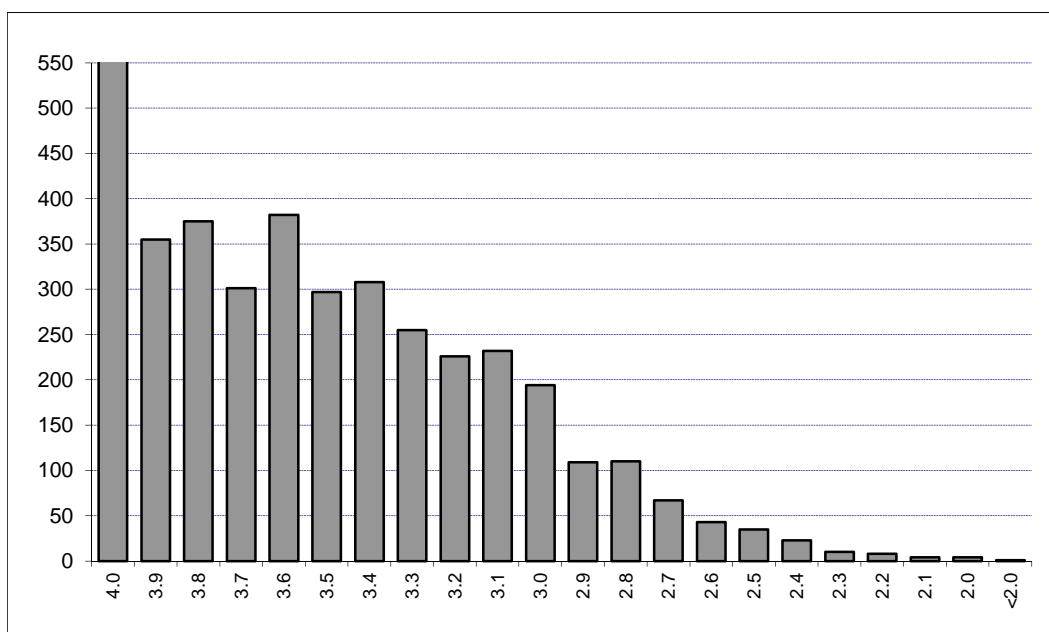
<sup>1</sup>Source - Oklahoma High School Graduates - Projections, Oklahoma State Regents for Higher Education (Projections for 2011)

<sup>2</sup>Source - ACT Profile Report - State, Graduating Class 2011, Oklahoma

\*This includes only Oklahoma high school graduates who took the ACT prior to graduation in the year indicated.

\*\*This includes only those students eligible for college enrollment in the fall semester of the year indicated and does not include multiple ACT scores for any one student. Student Profiles prior to Fall 2003 may include multiple ACT scores per person.

**DISTRIBUTION OF FRESHMEN HIGH SCHOOL GRADE POINT AVERAGES  
OKLAHOMA STATE UNIVERSITY  
FALL SEMESTER 2011**



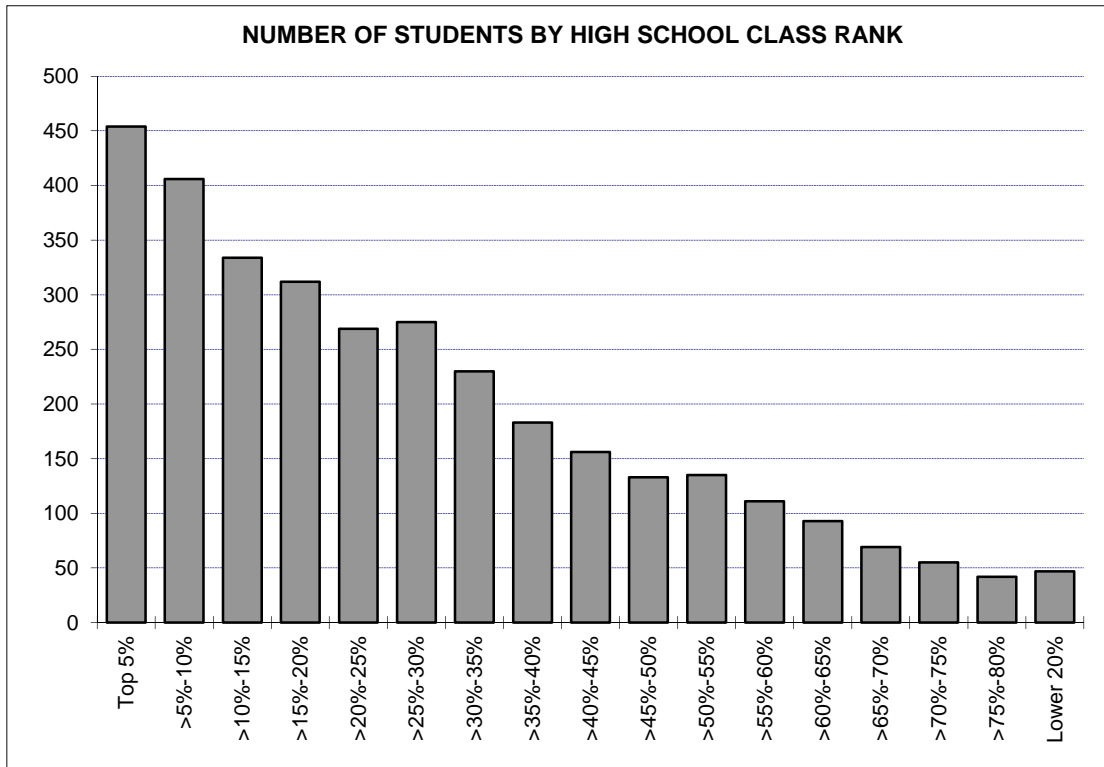
GPA	Number	Cumulative Number	Percent	Cumulative Percent
4.0	554	554	14.23%	14.23%
3.9	355	909	9.12%	23.35%
3.8	375	1,284	9.63%	32.98%
3.7	301	1,585	7.73%	40.71%
3.6	382	1,967	9.81%	50.53%
3.5	297	2,264	7.63%	58.16%
3.4	308	2,572	7.91%	66.07%
3.3	255	2,827	6.55%	72.62%
3.2	226	3,053	5.81%	78.42%
3.1	232	3,285	5.96%	84.38%
3.0	194	3,479	4.98%	89.37%
2.9	109	3,588	2.80%	92.17%
2.8	110	3,698	2.83%	94.99%
2.7	67	3,765	1.72%	96.71%
2.6	43	3,808	1.10%	97.82%
2.5	35	3,843	0.90%	98.72%
2.4	23	3,866	0.59%	99.31%
2.3	10	3,876	0.26%	99.56%
2.2	8	3,884	0.21%	99.77%
2.1	4	3,888	0.10%	99.87%
2.0	4	3,892	0.10%	99.97%
<2.0	1	3,893	0.03%	100.0%
<b>Total</b>	<b>3,893</b>	<b>3,893</b>	<b>100.0%</b>	<b>100.0%</b>

Note: 3 new freshmen (including international, home schooled, and adult admission students) did not supply a high school GPA.

The average high school GPA reported was 3.48. The average high school core GPA calculated was 3.53.



**RANK IN HIGH SCHOOL CLASS BY NUMBER OF NEW FRESHMEN & PERCENT IN EACH RANK  
OKLAHOMA STATE UNIVERSITY  
FALL SEMESTER 2011**

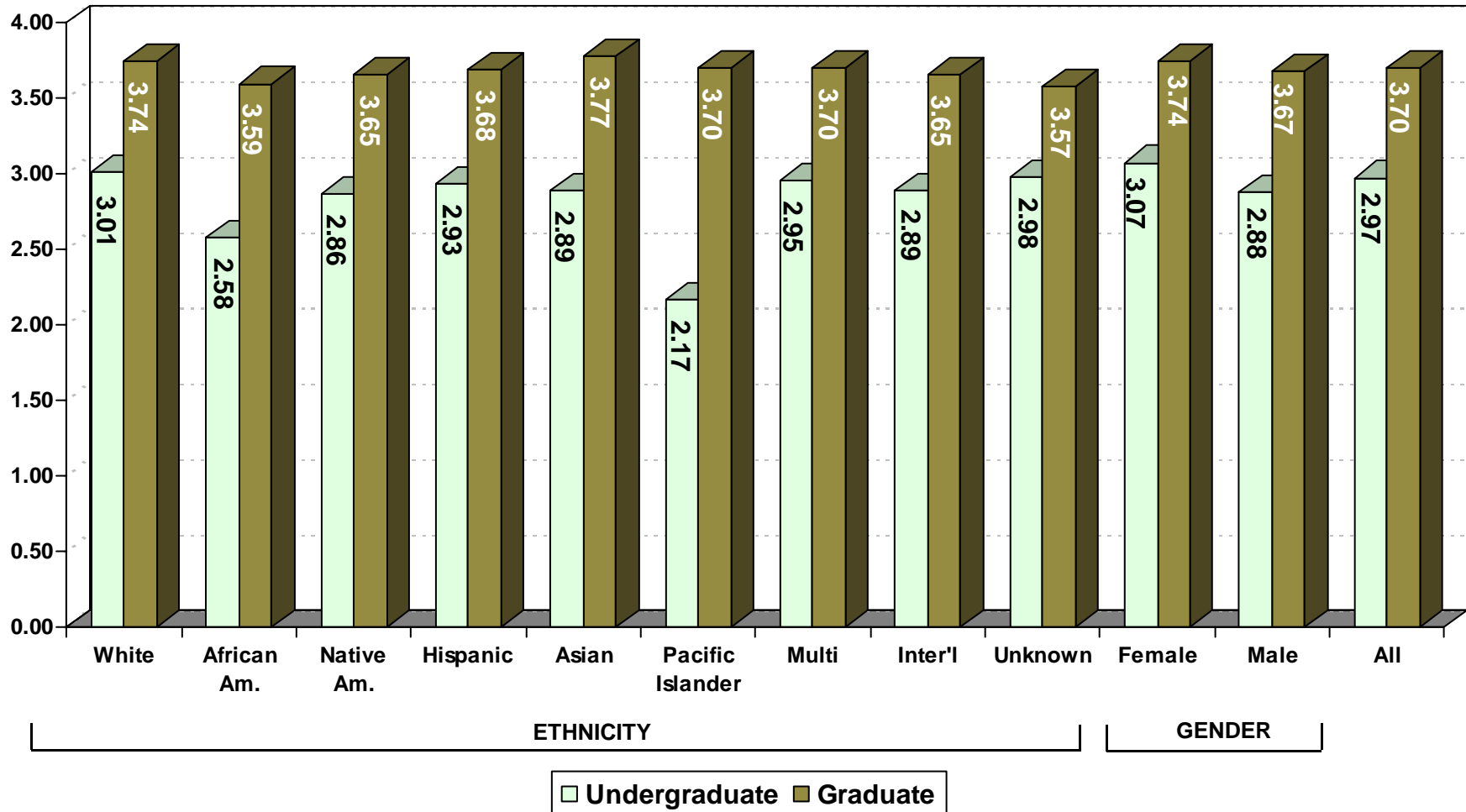


Rank	Number	Cumulative Number	Percent	Cumulative Percent
Top 5%	454	454	13.74%	13.74%
>5%-10%	406	860	12.29%	26.03%
>10%-15%	334	1,194	10.11%	36.14%
>15%-20%	312	1,506	9.44%	45.58%
>20%-25%	269	1,775	8.14%	53.72%
>25%-30%	275	2,050	8.32%	62.05%
>30%-35%	230	2,280	6.96%	69.01%
>35%-40%	183	2,463	5.54%	74.55%
>40%-45%	156	2,619	4.72%	79.27%
>45%-50%	133	2,752	4.03%	83.29%
>50%-55%	135	2,887	4.09%	87.38%
>55%-60%	111	2,998	3.36%	90.74%
>60%-65%	93	3,091	2.81%	93.55%
>65%-70%	69	3,160	2.09%	95.64%
>70%-75%	55	3,215	1.66%	97.31%
>75%-80%	42	3,257	1.27%	98.58%
Lower 20%	47	3,304	1.42%	100.0%

Note: 592 new freshmen (including international, home schooled, and adult admission students) did not supply a high school rank.

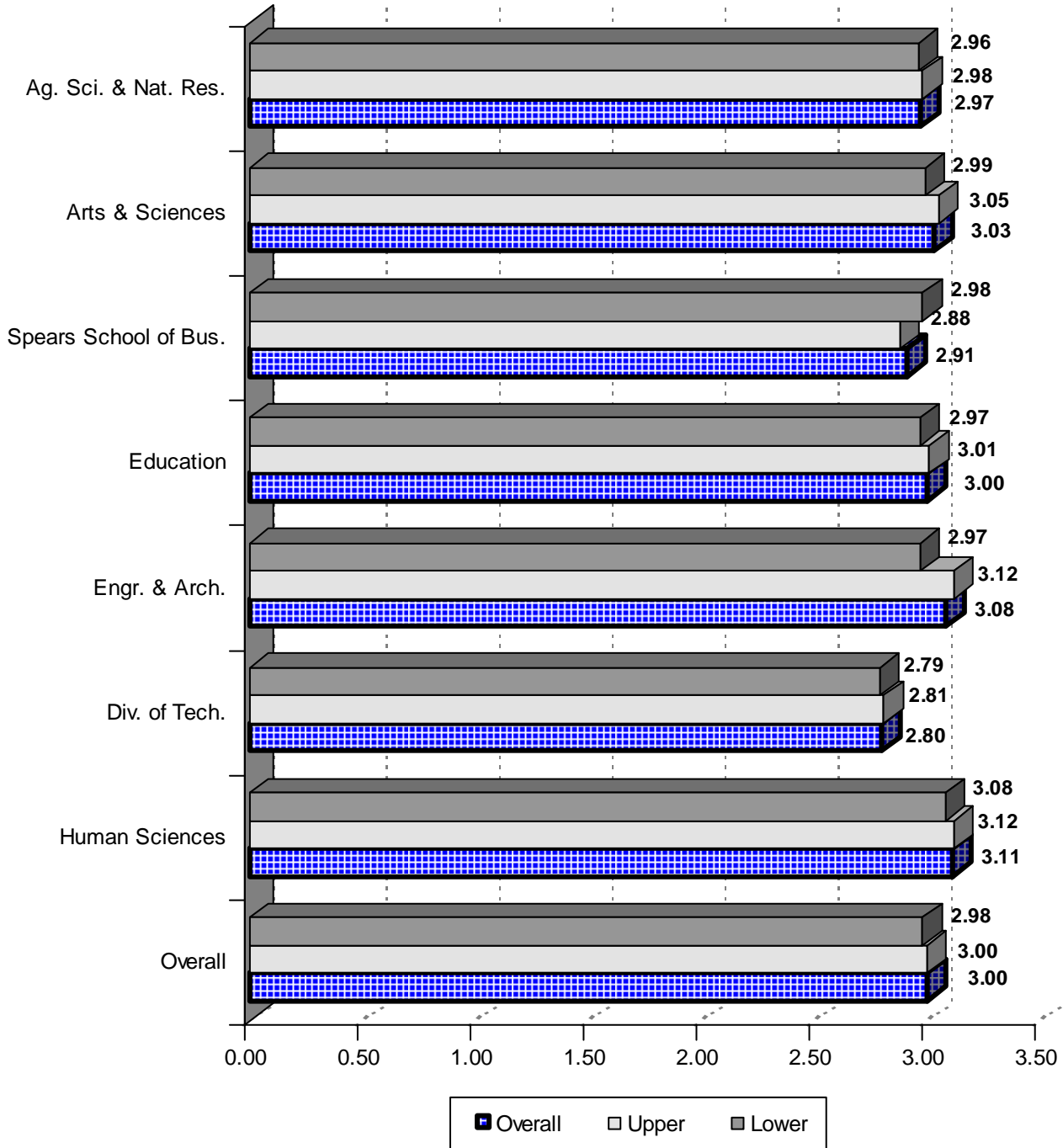
**AVERAGE CUMULATIVE GRADE POINT AVERAGE BY ETHNICITY AND GENDER**  
**OKLAHOMA STATE UNIVERSITY**  
**FALL SEMESTER 2011**

51



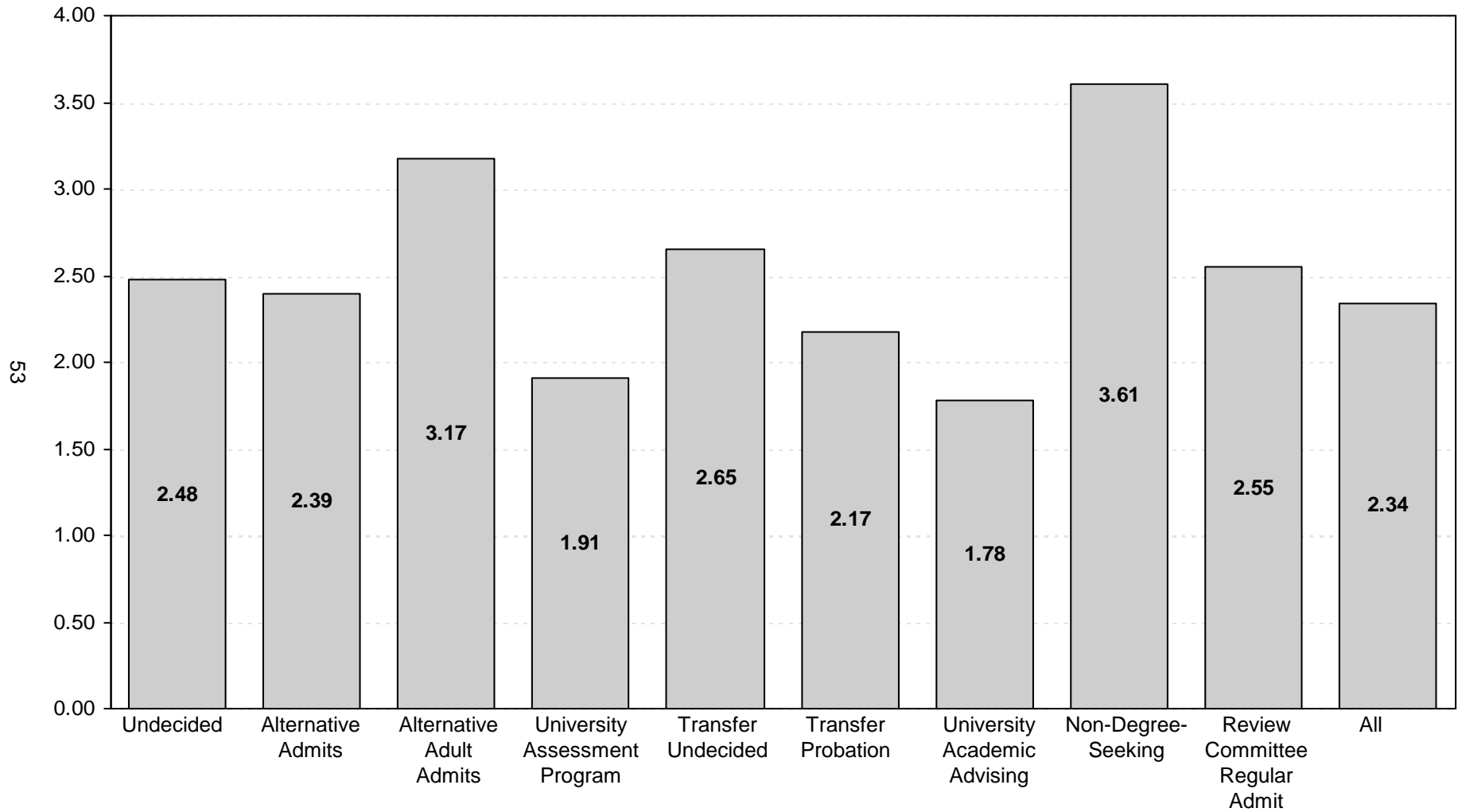
*Note:* The data presented above includes 13,177 undergraduates and 3,563 graduates for whom a cumulative GPA was reported. This chart excludes professional students, new transfers, and new freshmen, but includes students at OSU-Tulsa.

**AVERAGE CUMULATIVE GRADE POINT AVERAGE  
OF UNDERGRADUATE STUDENTS BY COLLEGE AND DIVISION  
OKLAHOMA STATE UNIVERSITY  
FALL SEMESTER 2011**



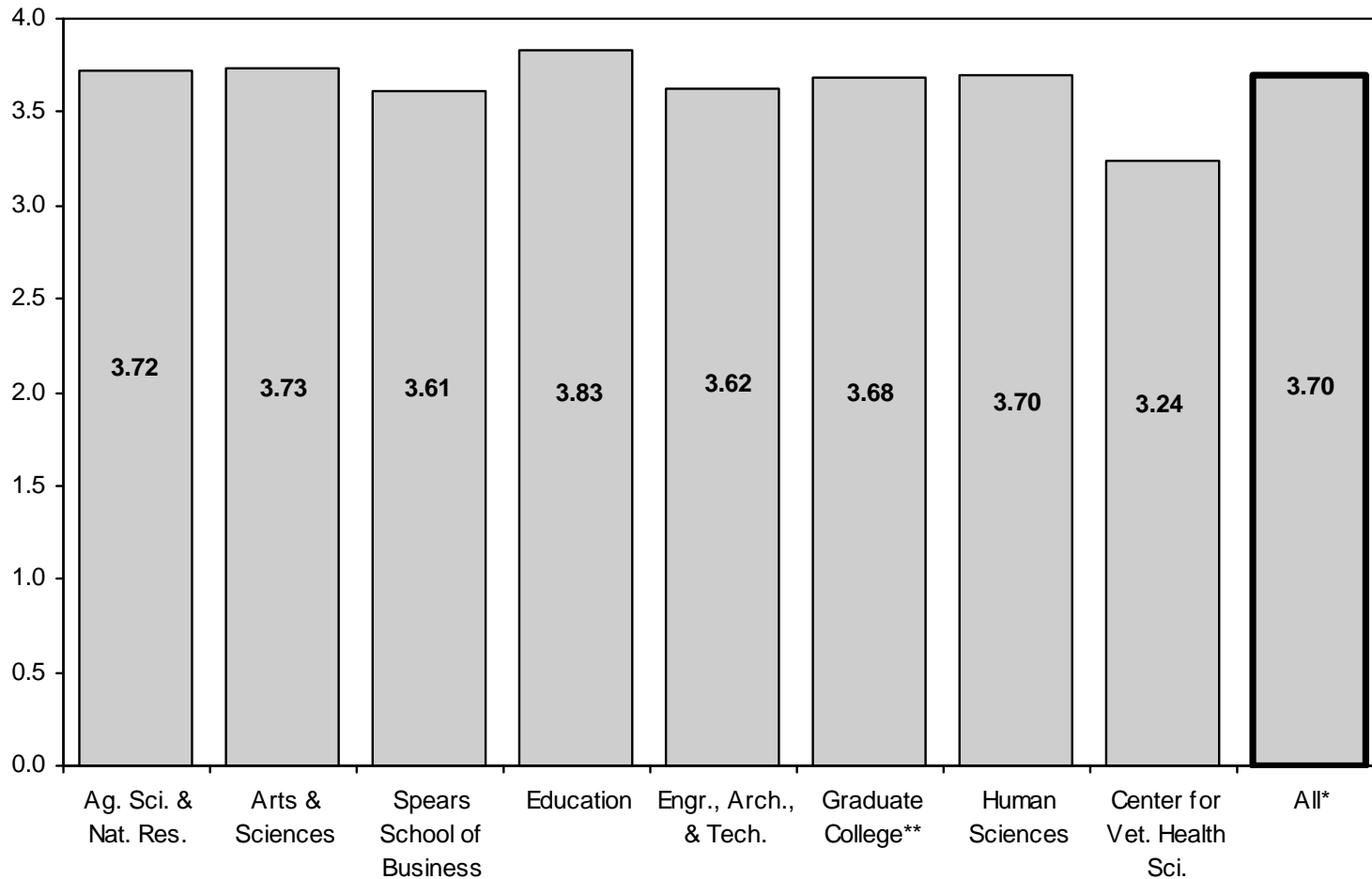
*Note:* This chart includes 12,656 undergraduates enrolled for Fall 2011 for whom a cumulative GPA was reported. This chart excludes professional students, new freshmen, new transfers, and University Academic Services, but includes students enrolled at OSU-Tulsa.

**AVERAGE CUMULATIVE GRADE POINT AVERAGE  
OF UNIVERSITY ACADEMIC SERVICES STUDENTS  
OKLAHOMA STATE UNIVERSITY  
FALL SEMESTER 2011**



*Note:* This chart includes 521 students enrolled in University Academic Services in the Fall 2011 semester for whom a cumulative GPA was reported.

**AVERAGE CUMULATIVE GRADE POINT AVERAGE  
OF GRADUATE STUDENTS BY COLLEGE  
OKLAHOMA STATE UNIVERSITY  
FALL SEMESTER 2011**

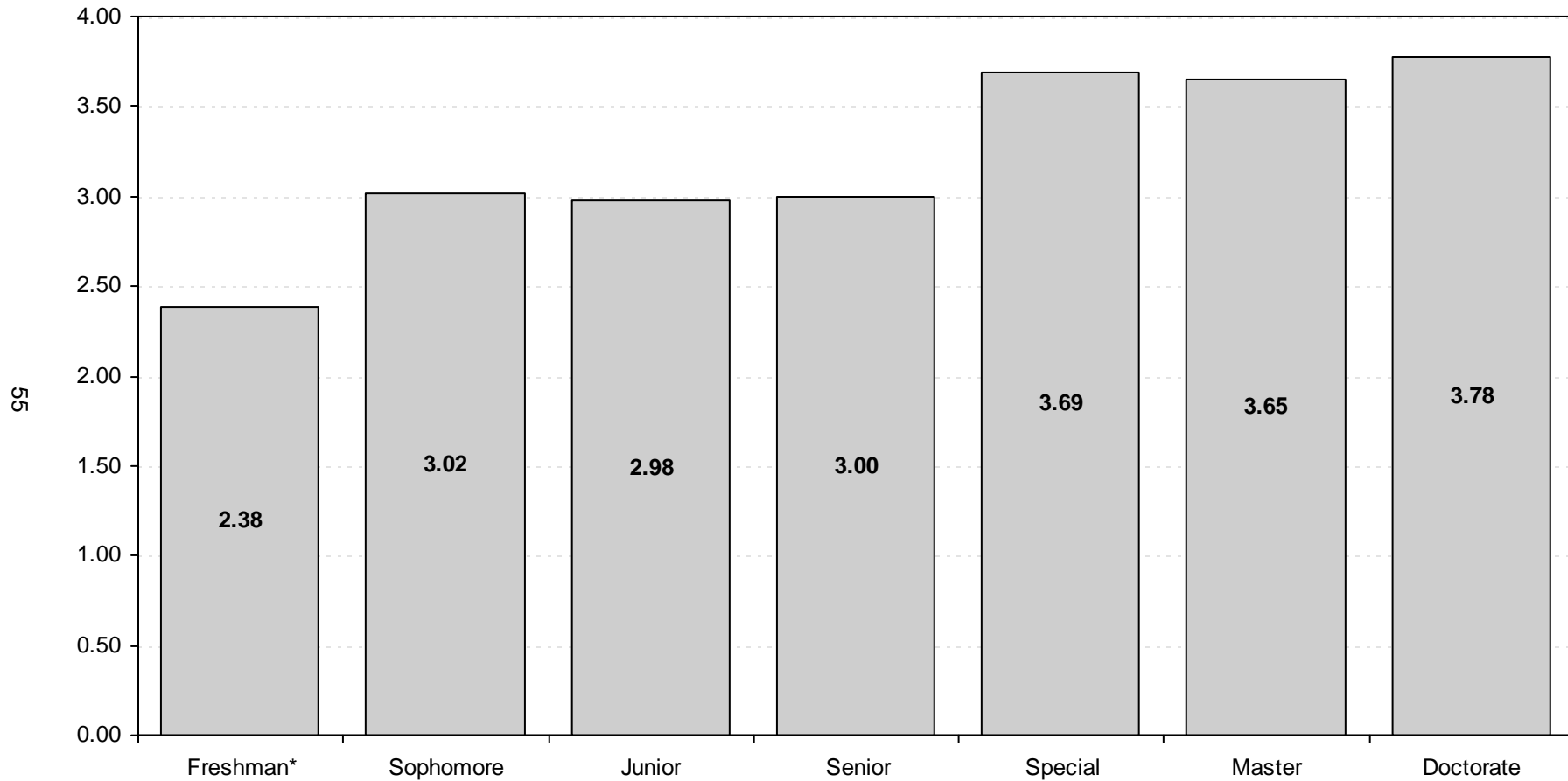


\*Center for Veterinary Health Sciences' professional students are excluded from the overall average.

\*\*Interdisciplinary graduate programs that do not have a specific area of specialization are reported in the Graduate College.

*Note:* This chart includes 3,563 graduate students and 258 professional students enrolled in the Fall 2011 semester for whom a cumulative GPA was reported. This chart does not include new transfer students but does include students enrolled at OSU-Tulsa.

**AVERAGE CUMULATIVE GRADE POINT AVERAGE  
OF STUDENTS BY CLASS LEVEL  
OKLAHOMA STATE UNIVERSITY  
FALL SEMESTER 2011**



\*Includes students enrolled previously who have earned fewer than 28 semester credit hours. This does not include Fall 2011 new freshmen.

Note: This chart includes 16,740 students enrolled in the Fall 2011 semester for whom a cumulative GPA was reported. This chart excludes professional students, new freshmen, and new transfer students, but includes students enrolled at OSU-Tulsa.