

ENROLLMENT PROJECTIONS

OKLAHOMA STATE UNIVERSITY FALL SEMESTER HEADCOUNT ENROLLMENT AND PROJECTIONS

Enrollment at Oklahoma State University showed a decrease for the Fall 2008 semester with a headcount of 22,768. While any drop in enrollment is always a concern, it is important to look at contributing factors. In the past six years, the number of Bachelor degrees granted has increased by more than 800 (27%), with Oklahoma State University granting over 3,800 Bachelor degrees in 2007-2008 versus 3,000 in 2001-2002. In addition to the recent senior classes being the largest in more than 20 years, graduation rates have continued to improve. Oklahoma State University's most recent 6-year graduation rate is 60.1% which is the highest in school history. The 4-year and 5-year graduation rates of 32.1% and 53.8% respectively are also the highest in at least 30 years.

The projections for future years presented in this section are mathematical models based on past trends in applications, admitted students, and subsequent enrollments, as well as retention rates and forecasts of high school graduates. Forecasts for Oklahoma high school graduates show numbers fluctuating over the next four years. Because the OSU freshman class is made up of more than 75% Oklahoma residents, these forecasts are the primary source of projection numbers for freshman enrollment. The forecasts of Oklahoma high school graduates used in this section are based upon information from the Oklahoma State Department of Education and the State Regents for Higher Education. They assume that demographic trends such as immigration into and emigration out of the state will remain relatively constant.

Graduate enrollment at OSU continued to increase for the Fall 2008 semester. This is especially encouraging considering graduate enrollment typically declines during upswings in the economy and improving job markets that are currently occurring in Oklahoma. The increase is also a positive sign after several years that showed substantial increases in graduate degrees granted.

In summary, several factors affect enrollment projections at OSU. Some of these factors depend on policy decisions originating with the Oklahoma State Regents for Higher Education and others depend on recruitment policies set by OSU administration. The impact of these policies, as well as changing admissions, enrollment, retention, scholarship, and recruiting practices, all have a role in determining future enrollment at Oklahoma State University. The Office of Institutional Research & Information Management will continue to monitor developments in these areas and assess their impact on enrollment.

**OKLAHOMA HIGH SCHOOL GRADUATES AND ACT TEST-TAKERS
1998-1999 THROUGH 2007-2008 ACTUAL**

Year	HS Grads	ACT Takers	Percent
1998-1999	37,396	26,455	70.7%
1999-2000	38,512	27,850	72.3%
2000-2001	38,344	27,910	72.8%
2001-2002	37,699	26,717	70.9%
2002-2003	37,688	27,009	71.7%
2003-2004	38,109	26,556	69.7%
2004-2005	37,446	26,297	70.2%
2005-2006	37,940	26,425	69.6%
2006-2007	38,314	26,360	68.8%
2007-2008*	38,420	27,131	70.6%

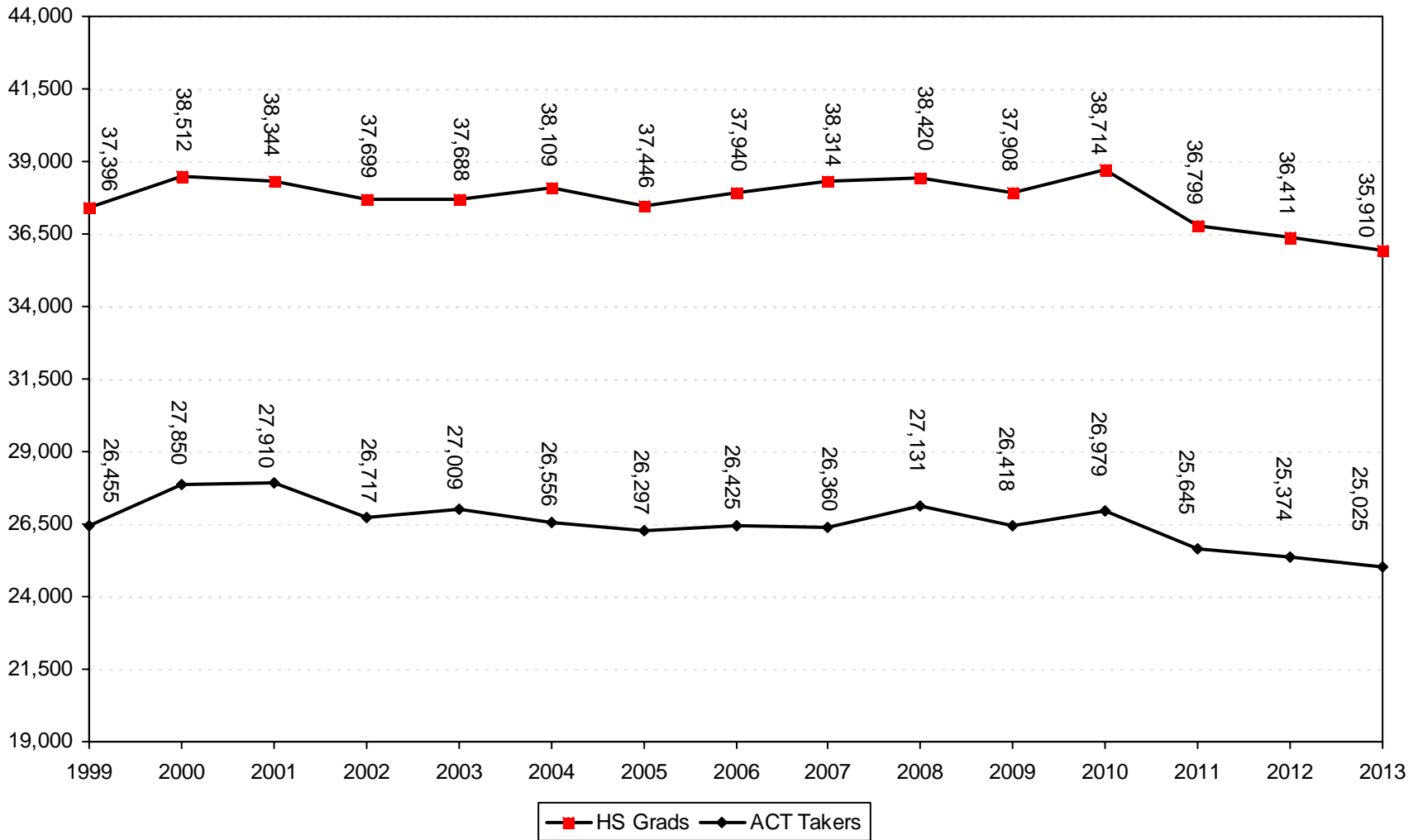
Sources : Student Data Report, Oklahoma State Regents for Higher Education, June 2008.
 ACT High School Profile Report, HS Graduating Class 2008, Oklahoma.
 * 2007-2008 high school graduate count is a projection.

**PROJECTIONS OF OKLAHOMA HIGH SCHOOL GRADUATES
AND ACT TEST-TAKERS**

2008-2009	37,908	26,418	69.7%
2009-2010	38,714	26,979	69.7%
2010-2011	36,799	25,645	69.7%
2011-2012	36,411	25,374	69.7%
2012-2013	35,910	25,025	69.7%

Sources: Student Data Report, Oklahoma State Regents for Higher Education, June 2008.
 Projections of ACT test-takers are based on past patterns of participation.

**HIGH SCHOOL GRADUATES IN OKLAHOMA
1998-1999 THROUGH 2006-2007 ACTUAL, WITH PROJECTIONS TO 2012-2013**



Note: High school graduate numbers are revised based on OSRHE Student Data Report, June 2008. Projections from 2008 – 2013 are also from the OSRHE Student Data Report, June 2008.

PROJECTION OF NEW FRESHMEN*
OKLAHOMA STATE UNIVERSITY
FALL SEMESTERS 1999 THROUGH 2008 (ACTUAL)
WITH PROJECTIONS THROUGH FALL 2013

Year	Resident	Nonresident US Citizen	International	Total
<u>Actual</u>				
1999	2,409	379	44	2,832
2000	2,582	378	53	3,013
2001	2,504	507	92	3,103
2002	2,570	560	71	3,201
2003	2,779	587	64	3,430
2004	2,526	687	51	3,264
2005	2,548	715	52	3,315
2006	2,500	692	44	3,236
2007	2,490	673	46	3,209
2008	2,357	683	33	3,073
<u>Projection</u>				
2009	2,456	685	41	3,182
2010	2,495	696	42	3,233
2011	2,402	670	40	3,112
2012	2,383	665	39	3,087
2013	2,358	658	39	3,055

Note: Projections are based on historical patterns of admitted new freshmen and enrolled new freshmen.

* New freshmen counts exclude concurrent high school students and non-degree-seeking students for all years listed.

Prior to the Fall 2001 semester, out-of-state recruiting efforts were expanded and contributed to the substantial increase in out-of-state new freshmen.

**HEADCOUNT ENROLLMENT PROJECTIONS
OKLAHOMA STATE UNIVERSITY
FALL SEMESTERS 1999 THROUGH 2008 ACTUAL, WITH PROJECTIONS THROUGH FALL 2013**

Year	Freshman		Sophomore	Junior	Senior	Special Undergrad	Total Undergrad	Master	Doctorate	Special Graduate	Total Graduate	Total OSU-Stillwater	CVHS	OSU-T Undergrad	OSU-T Grad	Other Off-Campus	Grand Total
	New	Other															
Actual																	
1999	2,904	1,173	3,543	3,923	4,235	36	15,814	1,987	1,137	492	3,616	19,430	294	552	716	95	21,087
2000	3,072	1,076	3,765	3,834	4,339	46	16,132	1,983	1,133	320	3,436	19,568	292	527	865	0	21,252
2001	3,165	1,196	3,886	3,925	4,234	51	16,457	2,122	1,102	302	3,526	19,983	289	754	846	0	21,872
2002	3,265	1,208	3,944	4,115	4,458	49	17,039	2,340	1,180	298	3,818	20,857	292	1,004	839	0	22,992
2003	3,481	1,168	4,083	4,197	4,548	14	17,491	2,328	1,223	265	3,816	21,307	297	1,192	775	0	23,571
2004	3,263	1,199	4,056	4,266	4,604	105	17,493	2,204	1,201	382	3,787	21,280	296	1,296	754	0	23,626
2005	3,304	1,021	4,035	4,391	4,736	97	17,584	2,042	1,226	254	3,522	21,106	296	1,325	734	0	23,461
2006	3,221	922	4,099	4,383	4,658	109	17,392	2,005	1,239	291	3,535	20,927	308	1,345	727	0	23,307
2007	3,191	843	3,977	4,262	4,602	133	17,008	2,145	1,252	239	3,636	20,644	312	1,360	689	0	23,005
2008	3,054	749	3,795	4,280	4,517	241	16,636	2,212	1,321	268	3,801	20,437	319	1,350	662	0	22,768
Projection																	
2009	3,182	765	3,817	4,155	4,554	161	16,634	2,245	1,334	271	3,850	20,484	324	1,377	662	0	22,847
2010	3,233	782	3,918	4,193	4,427	161	16,714	2,279	1,347	274	3,900	20,614	328	1,405	669	0	23,016
2011	3,112	791	3,973	4,291	4,466	161	16,794	2,313	1,360	277	3,950	20,744	328	1,433	675	0	23,180
2012	3,087	776	3,883	4,344	4,565	161	16,816	2,348	1,374	280	4,002	20,818	328	1,462	682	0	23,290
2013	3,055	771	3,850	4,257	4,619	161	16,713	2,383	1,388	283	4,054	20,767	328	1,491	689	0	23,275

Note: New freshmen projections are based on historical patterns of admitted new freshmen and enrolled new freshmen. On-campus sophomore, junior, and senior projections are based on cohort survival rates.

