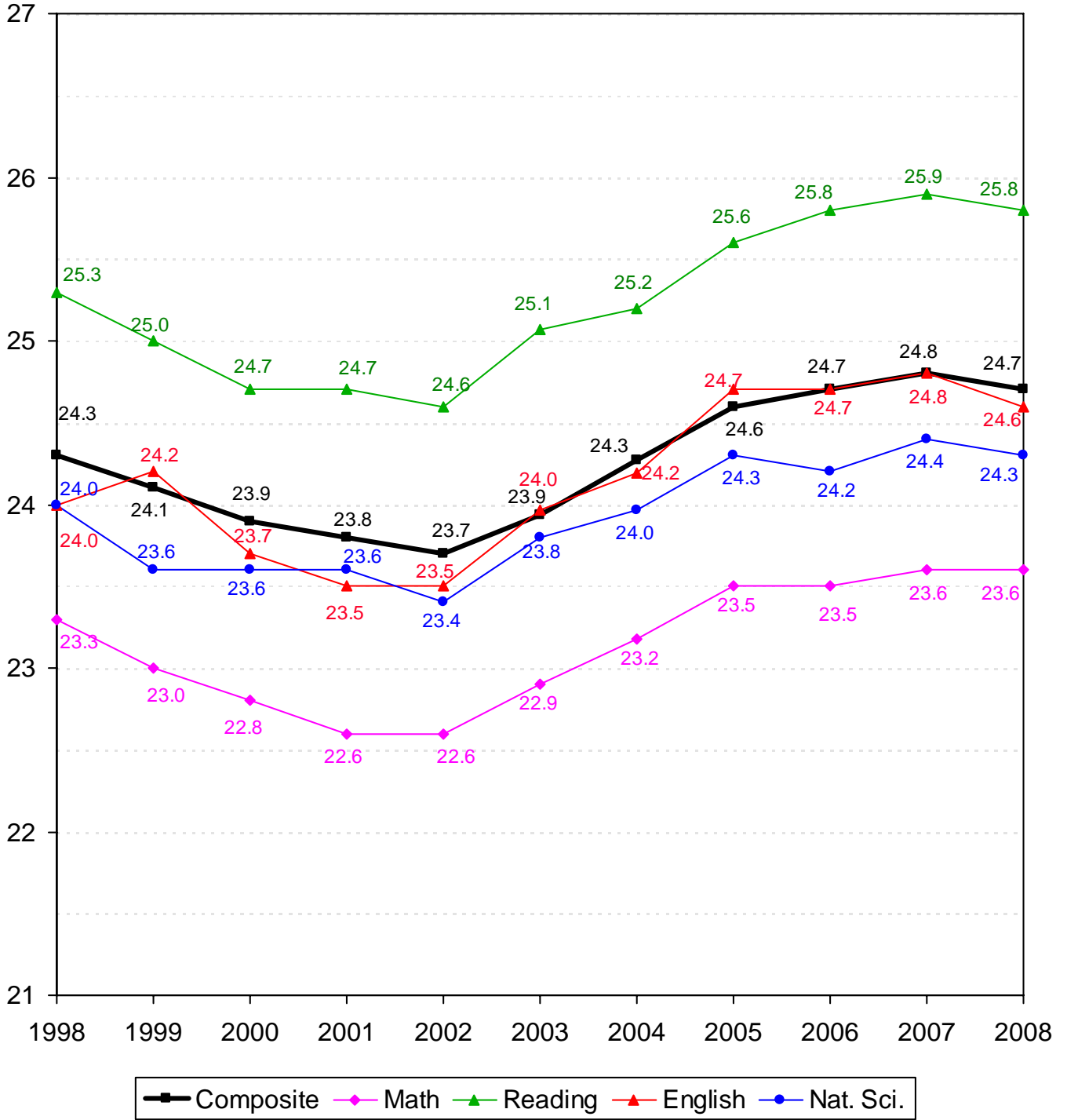


ACADEMIC INFORMATION

TEN-YEAR COMPARISON OF ACT SCORES FOR NEW FRESHMEN
OKLAHOMA STATE UNIVERSITY
FALL SEMESTERS 1998 THROUGH 2008



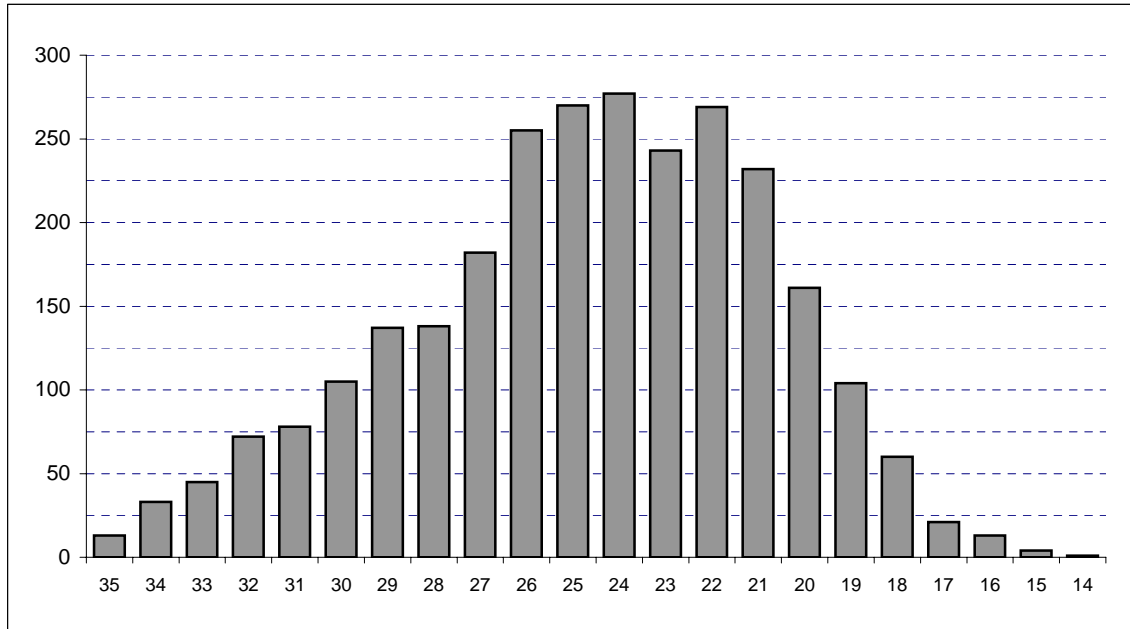
Note: Averages reflect the highest value for each subscore that a student received. Beginning in 2003, ACT composite scores are the average of the highest of each subscore received.

**COMPOSITE ACT AND SAT AVERAGES OF NEW FRESHMEN BY COLLEGE
OKLAHOMA STATE UNIVERSITY
FALL SEMESTER 2008**

College	ACT		SAT	
	Count	Composite	Count	Composite
Ag. Sciences & Natural Res.	337	24.6	30	1,110
Arts & Sciences	760	25.0	75	1,139
Spears School of Business	378	24.6	74	1,130
Education	225	23.7	19	1,123
Engineering & Architecture	443	26.9	52	1,169
Div. of Technology	65	26.0	8	1,216
Human Environmental Sci.	247	24.3	28	1,123
Overall College Average	2,455	25.1	286	1,139
University Academic Services	258	21.2	69	965
Overall Average	2,713	24.7	355	1,105

Note: Composite scores in this table are calculated using the highest subscores obtained for each student. If students have taken both the ACT and the SAT, only the higher score is reported.

**DISTRIBUTION OF NEW FRESHMEN BY COMPOSITE ACT SCORE
OKLAHOMA STATE UNIVERSITY
FALL SEMESTER 2008**



Composite ACT Score	Female	Male	Total	Percent	Cumulative Percent
35	5	8	13	0.48%	0.48%
34	11	22	33	1.22%	1.70%
33	16	29	45	1.66%	3.35%
32	31	41	72	2.65%	6.01%
31	26	52	78	2.88%	8.88%
30	41	64	105	3.87%	12.75%
29	74	63	137	5.05%	17.80%
28	71	67	138	5.09%	22.89%
27	92	90	182	6.71%	29.60%
26	132	123	255	9.40%	39.00%
25	143	127	270	9.95%	48.95%
24	146	131	277	10.21%	59.16%
23	122	121	243	8.96%	68.12%
22	156	113	269	9.92%	78.03%
21	128	104	232	8.55%	86.58%
20	104	57	161	5.93%	92.52%
19	59	45	104	3.83%	96.35%
18	40	20	60	2.21%	98.56%
17	10	11	21	0.77%	99.34%
16	7	6	13	0.48%	99.82%
15	2	2	4	0.15%	99.96%
14	1	0	1	0.04%	100.0%
Total	1,417	1,296	2,713	100.0%	100.0%

Note: ACT scores are only included in this table if they represent the highest test score available for the student. If the student's SAT score (converted to an ACT equivalent) is higher, then the ACT score is not included here.

**ACT AND SAT AVERAGES OF NEW FRESHMEN BY ETHNICITY AND GENDER
OKLAHOMA STATE UNIVERSITY
FALL SEMESTER 2008**

Ethnicity	ACT		SAT	
	Count	Composite	Count	Composite
White	2,202	24.9	281	1,126
African American	102	22.3	30	945
Native American	272	24.2	10	1,153
Hispanic	89	24.3	15	1,123
Asian	37	24.5	2	1,090
Gender				
Female	1,417	24.3	163	1,102
Male	1,296	25.2	192	1,107
Total	2,713	24.7	355	1,105

Note: Composite scores in this table are calculated using the highest subscores obtained for each student. If students have taken both the ACT and the SAT, only the higher score is reported.

**OKLAHOMA HIGH SCHOOL ACT PARTICIPATION STATISTICS
OKLAHOMA STATE UNIVERSITY
2003 THROUGH 2008**

	2003		2004		2005		2006		2007		2008	
High School Graduates in Oklahoma ¹	37,688		38,109		37,446		37,940		38,314		38,420	
Number of Oklahoma H.S. Students Taking ACT ^{2*}	27,009		26,556		26,297		26,425		26,360		27,131	
Total ACT Scores Received by OSU ^{2**}	9,758		9,468		9,506		9,256		9,167		8,135	
1st Choice / % of Scores Received	3,412	35.0%	3,290	34.7%	3,405	35.8%	3,281	35.4%	3,421	37.3%	2,942	36.2%
2nd - 6th Choices / % of Scores Received	6,346	65.0%	6,178	65.3%	6,101	64.2%	5,975	64.6%	5,746	62.7%	5,193	63.8%
Applications Received by OSU	6,629		6,633		6,533		6,730		6,415		6,406	
New Freshmen Accepted by OSU	5,930		5,881		5,719		5,853		5,651		5,702	
% of Applications Received	89.5%		88.7%		87.5%		87.0%		88.1%		89.0%	
New Freshmen Enrolled at OSU	3,488		3,264		3,315		3,236		3,209		3,073	
% of Freshmen Accepted	58.8%		55.5%		58.0%		55.3%		56.8%		53.9%	

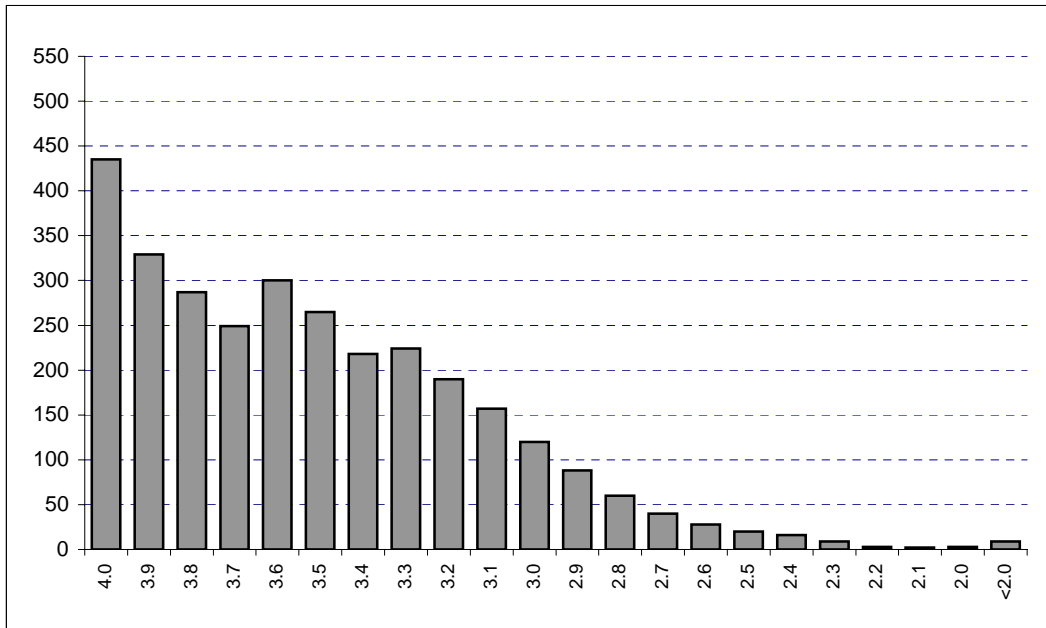
¹Source - 2006-2007 Student Data Report, Oklahoma State Regents for Higher Education (Projections for 2008)

²Source - ACT High School Profile Report, The Graduating Class of 2008, Oklahoma

*This includes only Oklahoma high school graduates who took the ACT prior to graduation in the year indicated.

**This includes only those students eligible for college enrollment in the fall semester of the year indicated and does not include multiple ACT scores for any one student. Student Profiles prior to Fall 2003 may include multiple ACT scores per person.

**DISTRIBUTION OF FRESHMEN HIGH SCHOOL GRADE POINT AVERAGES
OKLAHOMA STATE UNIVERSITY
FALL SEMESTER 2008**

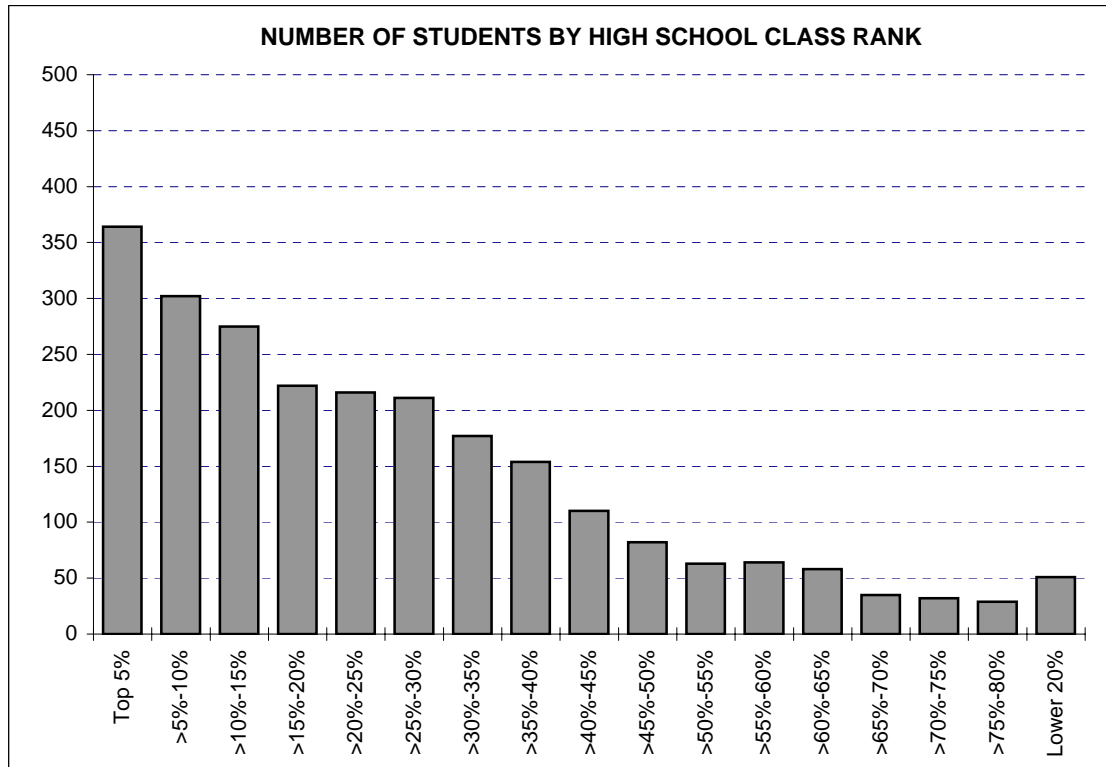


GPA	Number	Cumulative Number	Percent	Cumulative Percent
4.0	435	435	14.25%	14.25%
3.9	329	764	10.78%	25.03%
3.8	287	1,051	9.40%	34.44%
3.7	249	1,300	8.16%	42.60%
3.6	300	1,600	9.83%	52.42%
3.5	265	1,865	8.68%	61.11%
3.4	218	2,083	7.14%	68.25%
3.3	224	2,307	7.34%	75.59%
3.2	190	2,497	6.23%	81.82%
3.1	157	2,654	5.14%	86.96%
3.0	120	2,774	3.93%	90.89%
2.9	88	2,862	2.88%	93.77%
2.8	60	2,922	1.97%	95.74%
2.7	40	2,962	1.31%	97.05%
2.6	28	2,990	0.92%	97.97%
2.5	20	3,010	0.66%	98.62%
2.4	16	3,026	0.52%	99.15%
2.3	9	3,035	0.29%	99.44%
2.2	3	3,038	0.10%	99.54%
2.1	2	3,040	0.07%	99.61%
2.0	3	3,043	0.10%	99.71%
<2.0	9	3,052	0.29%	100.0%
Total	3,052	3,052	100.0%	100.0%

Note: 21 new freshmen (including international, home schooled, and adult admission students) did not supply a high school GPA.

The average high school GPA reported was 3.51. The average high school core GPA calculated was 3.49.

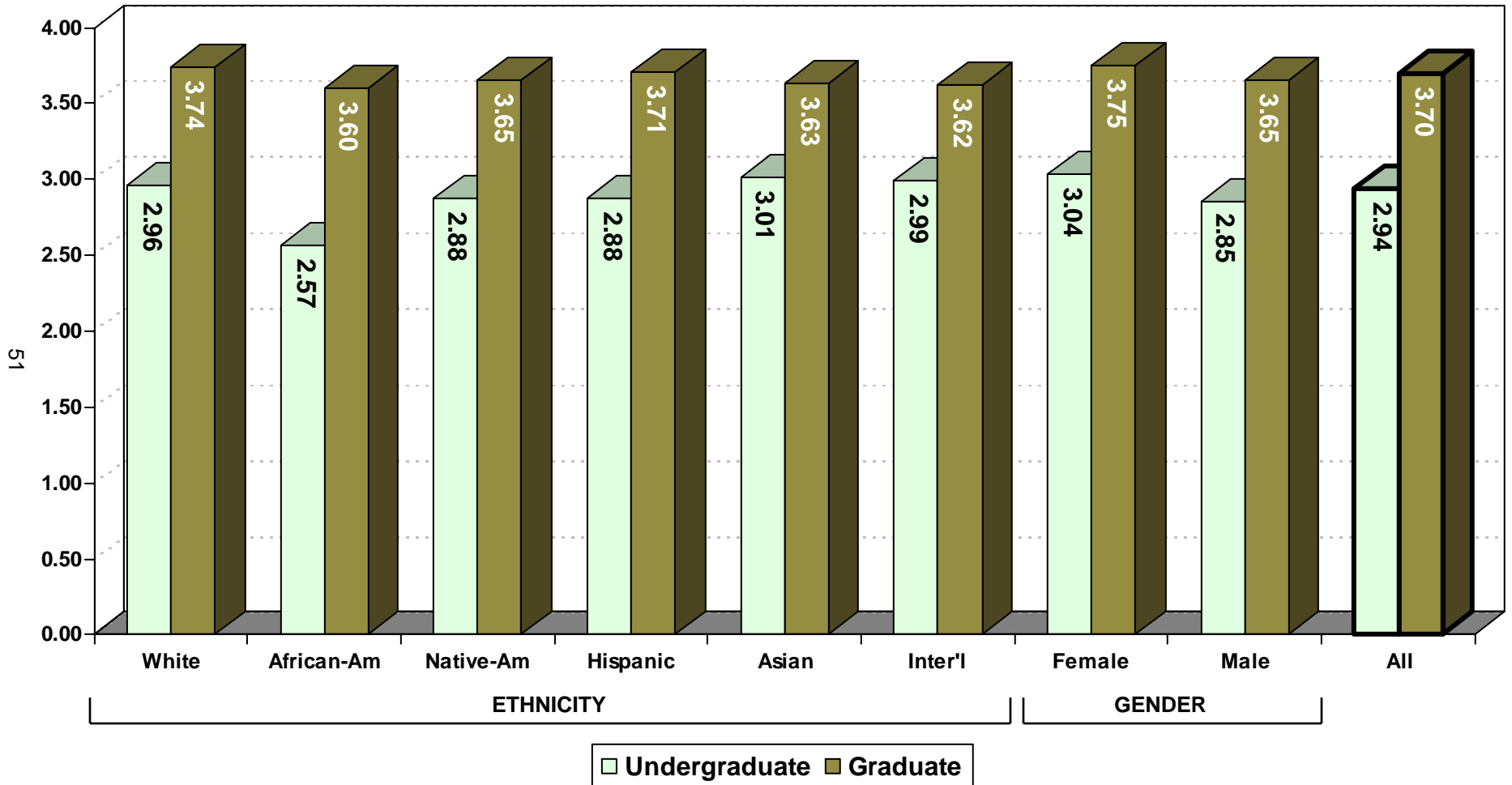
**RANK IN HIGH SCHOOL CLASS BY NUMBER OF NEW FRESHMEN & PERCENT IN EACH RANK
OKLAHOMA STATE UNIVERSITY
FALL SEMESTER 2008**



Rank	Number	Cumulative Number	Percent	Cumulative Percent
Top 5%	364	364	14.89%	14.89%
>5%-10%	302	666	12.35%	27.24%
>10%-15%	275	941	11.25%	38.49%
>15%-20%	222	1,163	9.08%	47.57%
>20%-25%	216	1,379	8.83%	56.40%
>25%-30%	211	1,590	8.63%	65.03%
>30%-35%	177	1,767	7.24%	72.27%
>35%-40%	154	1,921	6.30%	78.57%
>40%-45%	110	2,031	4.50%	83.07%
>45%-50%	82	2,113	3.35%	86.42%
>50%-55%	63	2,176	2.58%	89.00%
>55%-60%	64	2,240	2.62%	91.62%
>60%-65%	58	2,298	2.37%	93.99%
>65%-70%	35	2,333	1.43%	95.42%
>70%-75%	32	2,365	1.31%	96.73%
>75%-80%	29	2,394	1.19%	97.91%
Lower 20%	51	2,445	2.09%	100.0%

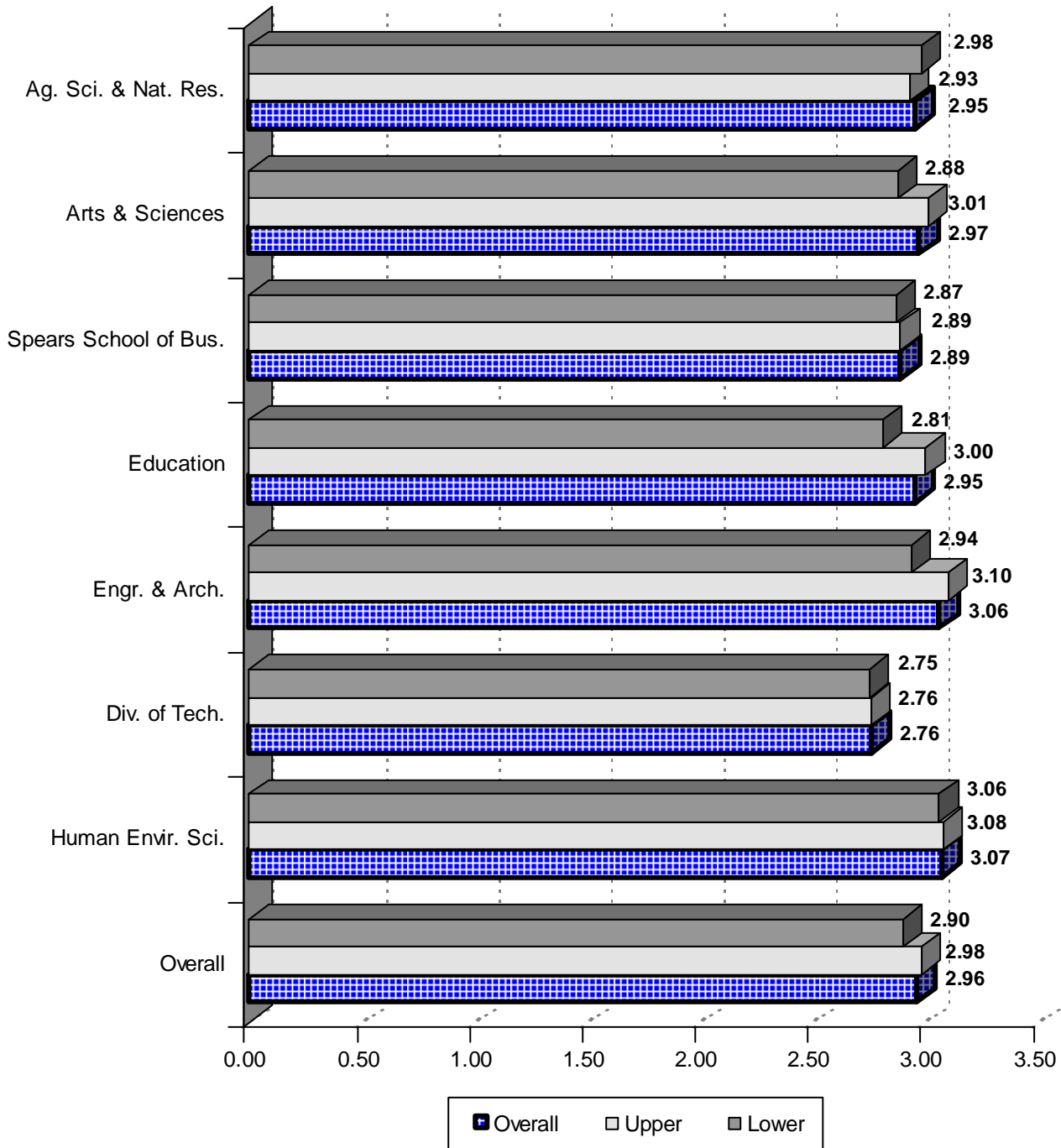
Note: 628 new freshmen (including international, home schooled, and adult admission students) did not supply a high school rank.

AVERAGE CUMULATIVE GRADE POINT AVERAGE BY ETHNICITY AND GENDER
OKLAHOMA STATE UNIVERSITY
FALL SEMESTER 2008



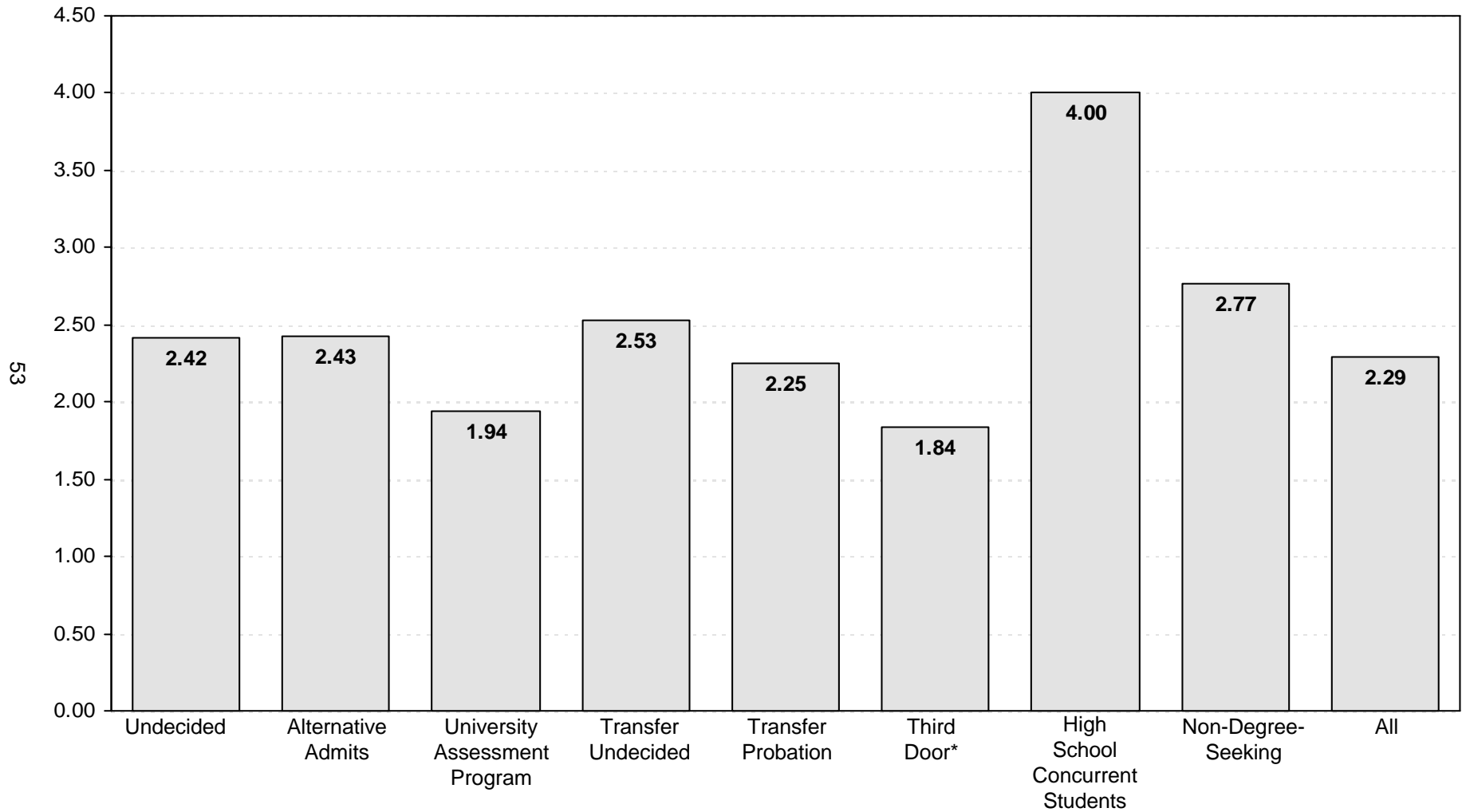
Note: The data presented above includes 13,123 undergraduates and 3,224 graduates for whom a cumulative GPA was reported. This chart excludes professional students, new transfers, and new freshmen, but includes students at OSU-Tulsa.

**AVERAGE CUMULATIVE GRADE POINT AVERAGE
OF UNDERGRADUATE STUDENTS BY COLLEGE AND DIVISION
OKLAHOMA STATE UNIVERSITY
FALL SEMESTER 2008**



Note: This chart includes 12,794 undergraduates enrolled for Fall 2008 for whom a cumulative GPA was reported. This chart excludes professional students, new freshmen, new transfers, and University Academic Services, but includes students enrolled at OSU-Tulsa.

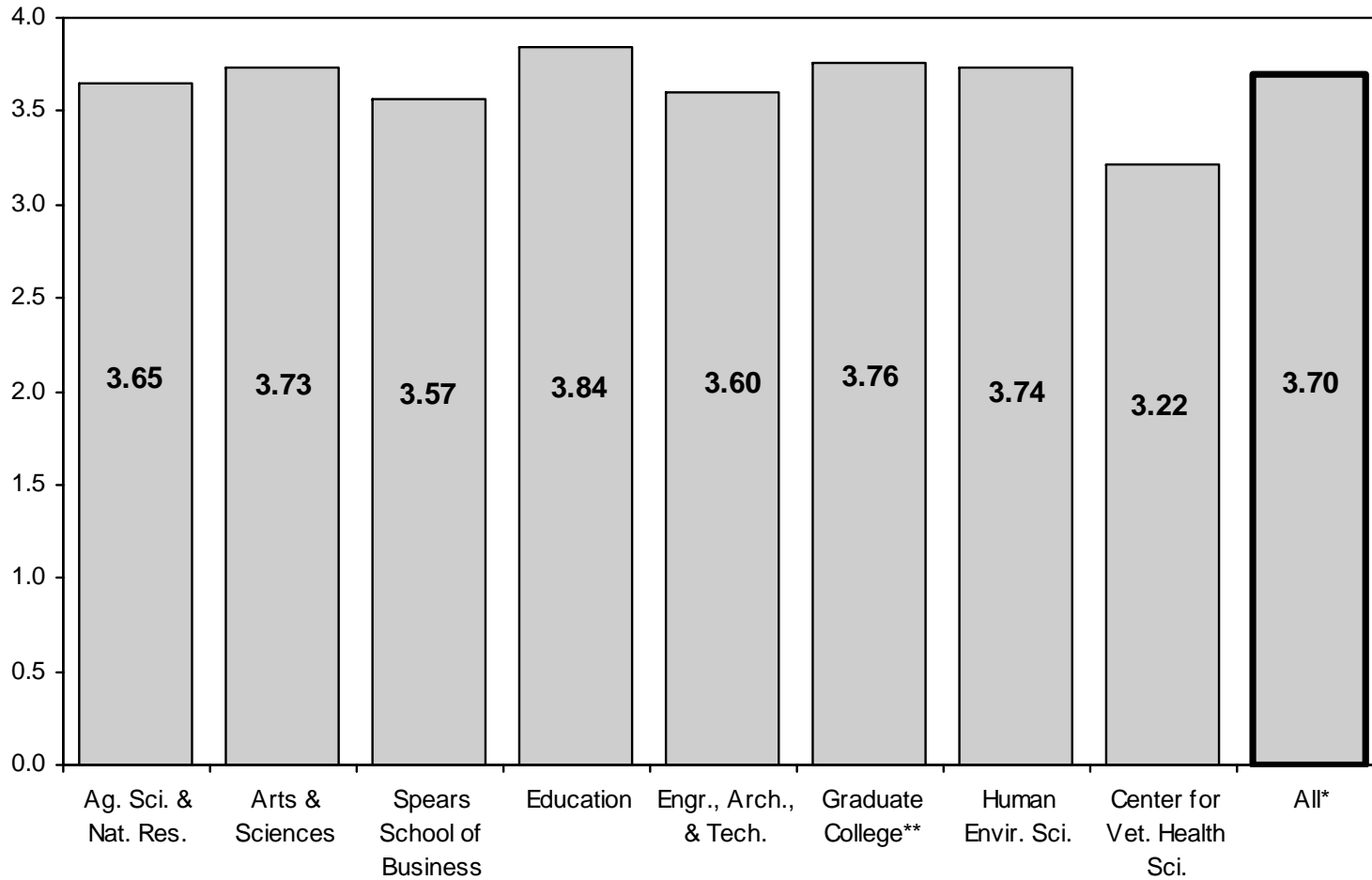
**AVERAGE CUMULATIVE GRADE POINT AVERAGE
OF UNIVERSITY ACADEMIC SERVICES STUDENTS
OKLAHOMA STATE UNIVERSITY
FALL SEMESTER 2008**



*The third door category includes only students admitted by their high school core GPA who are advised by University Academic Services.

Note: This chart includes 329 students enrolled in University Academic Services in the Fall 2008 semester for whom a cumulative GPA was reported.

**AVERAGE CUMULATIVE GRADE POINT AVERAGE
OF GRADUATE STUDENTS BY COLLEGE
OKLAHOMA STATE UNIVERSITY
FALL SEMESTER 2008**



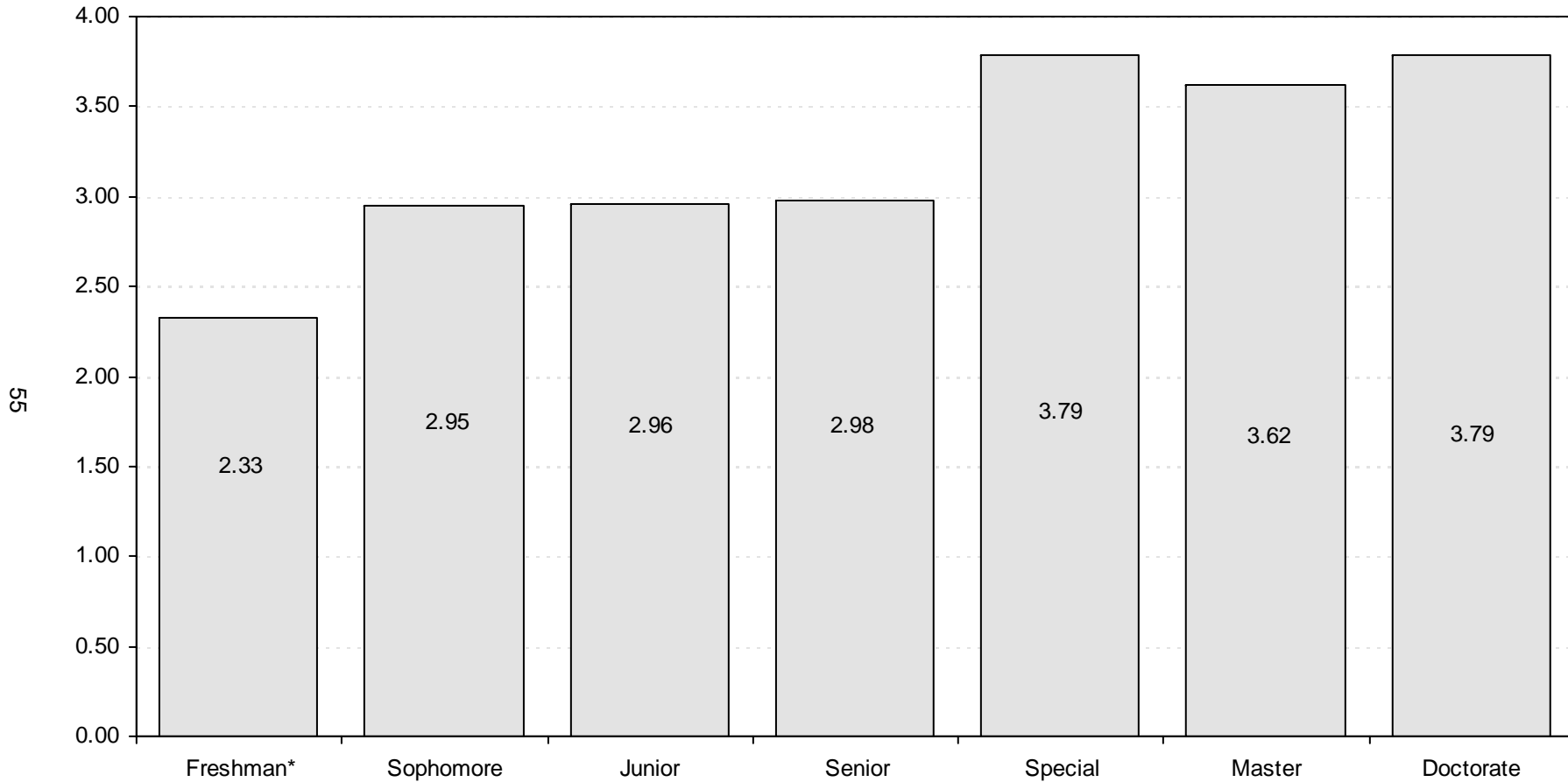
54

*Center for Veterinary Health Sciences' professional students are excluded from the overall average.

**Interdisciplinary graduate programs that do not have a specific area of specialization are reported in the Graduate College.

Note: This chart includes 3,224 graduate students and 233 professional students enrolled in the Fall 2008 semester for whom a cumulative GPA was reported. This chart does not include new transfer students but does include students enrolled at OSU-Tulsa.

**AVERAGE CUMULATIVE GRADE POINT AVERAGE
OF STUDENTS BY CLASS LEVEL
OKLAHOMA STATE UNIVERSITY
FALL SEMESTER 2008**



*Includes students enrolled previously who have earned fewer than 28 semester credit hours. This does not include Fall 2008 new freshmen.

Note: This chart includes 16,347 students enrolled in the Fall 2008 semester for whom a cumulative GPA was reported. This chart excludes professional students, new freshmen, and new transfer students, but includes students enrolled at OSU-Tulsa.