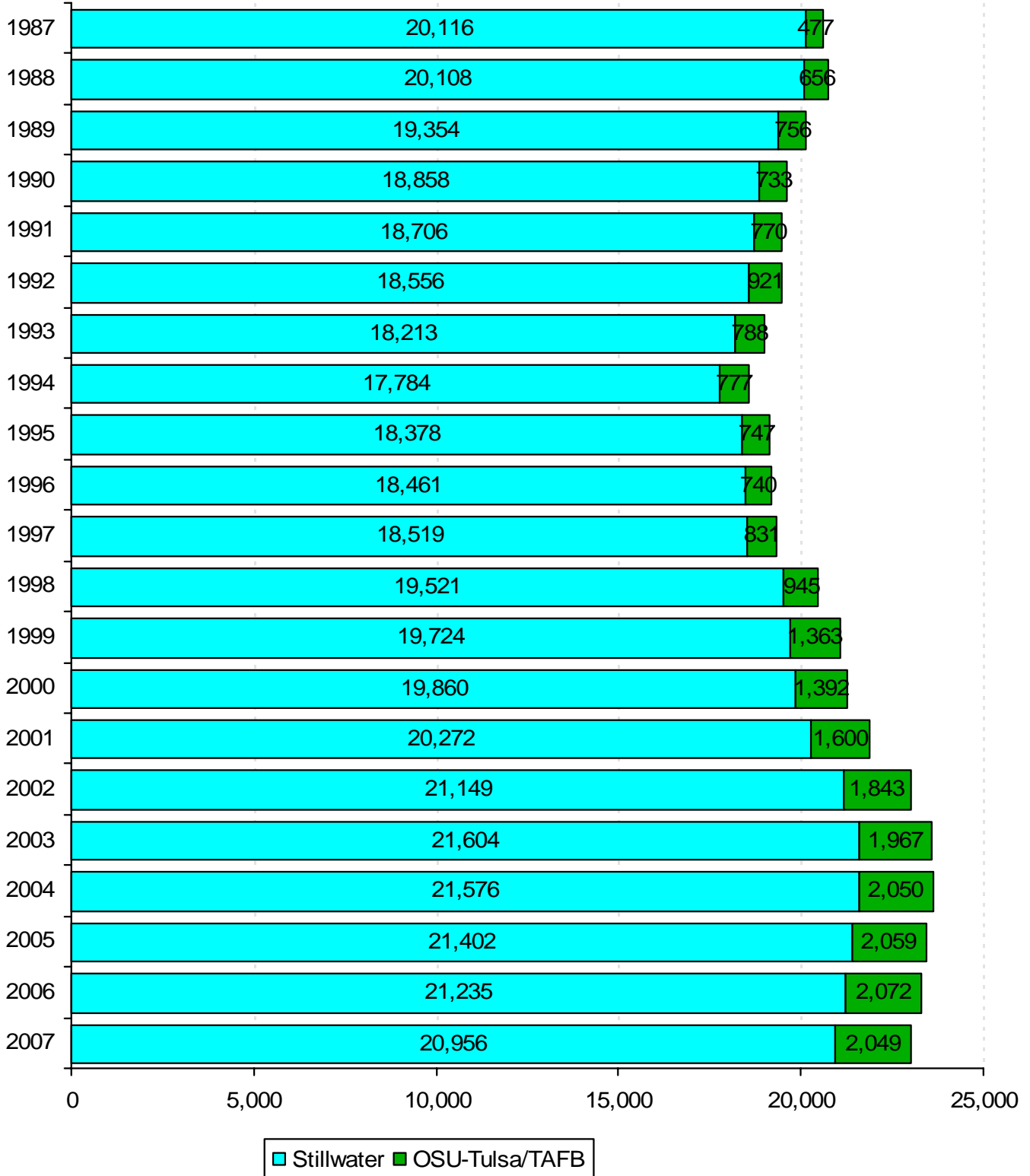


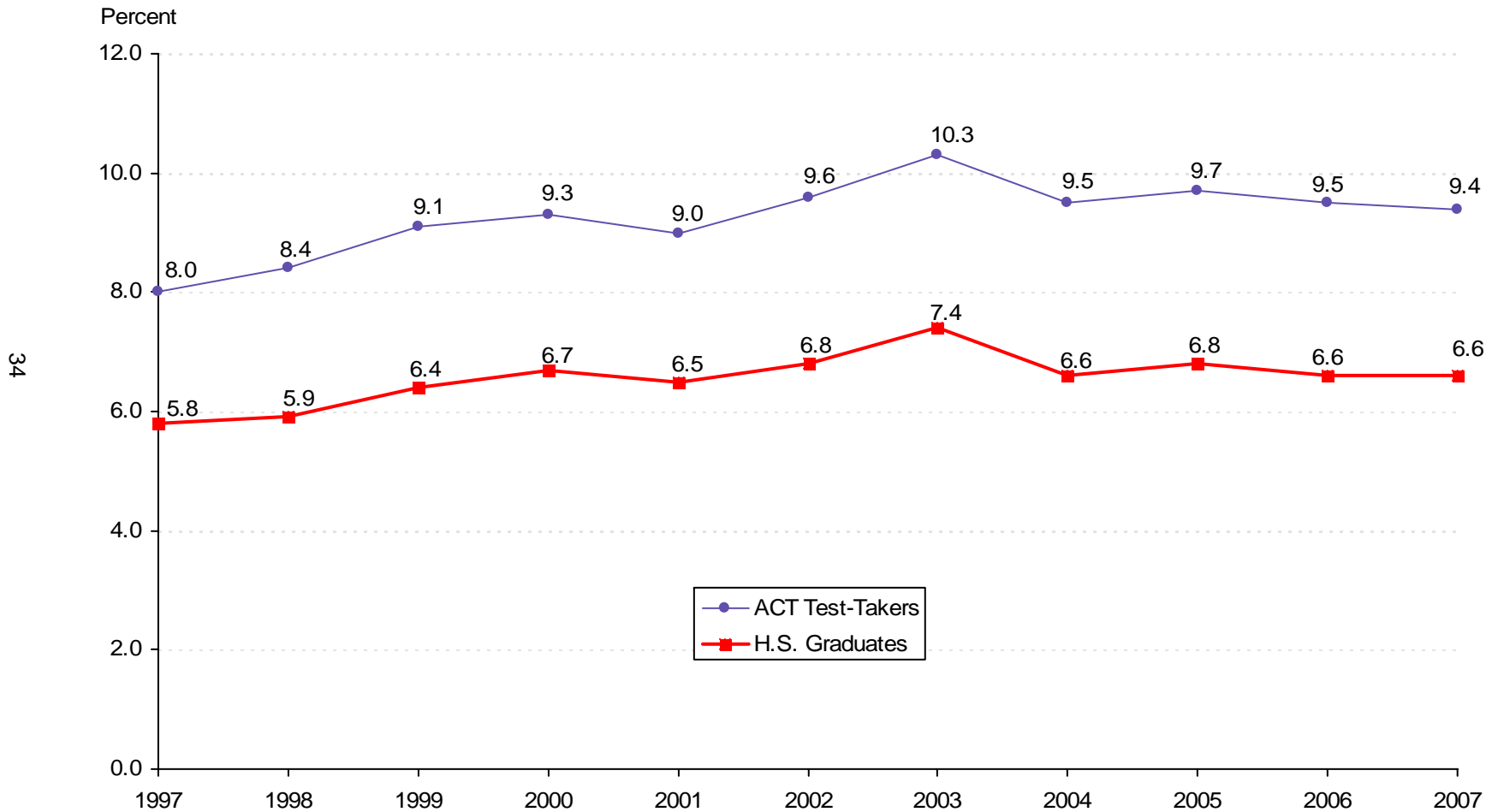
# ENROLLMENT TRENDS



**STILLWATER AND TULSA CAMPUS ENROLLMENT**  
**OKLAHOMA STATE UNIVERSITY**  
**FALL SEMESTERS 1987 THROUGH 2007**



**OKLAHOMA STATE UNIVERSITY SHARE OF THE MARKET**  
**RATIO OF BEGINNING RESIDENT FRESHMEN**  
**TO OKLAHOMA HIGH SCHOOL SPRING GRADUATES AND ACT TEST-TAKERS**  
**OKLAHOMA STATE UNIVERSITY**  
**FALL SEMESTERS 1997 THROUGH 2007**



*Note:* Total Oklahoma high school graduates for 2007 = 37,752; total Oklahoma ACT test-takers = 26,360. The beginning resident freshman count for all years include OSU-Tulsa students, but excludes non-degree-seeking and first time concurrent resident students. (See Page 43).

*Source:* Student Data Report, Oklahoma State Regents for Higher Education, and ACT High School Profile Report - State Composite for Oklahoma.

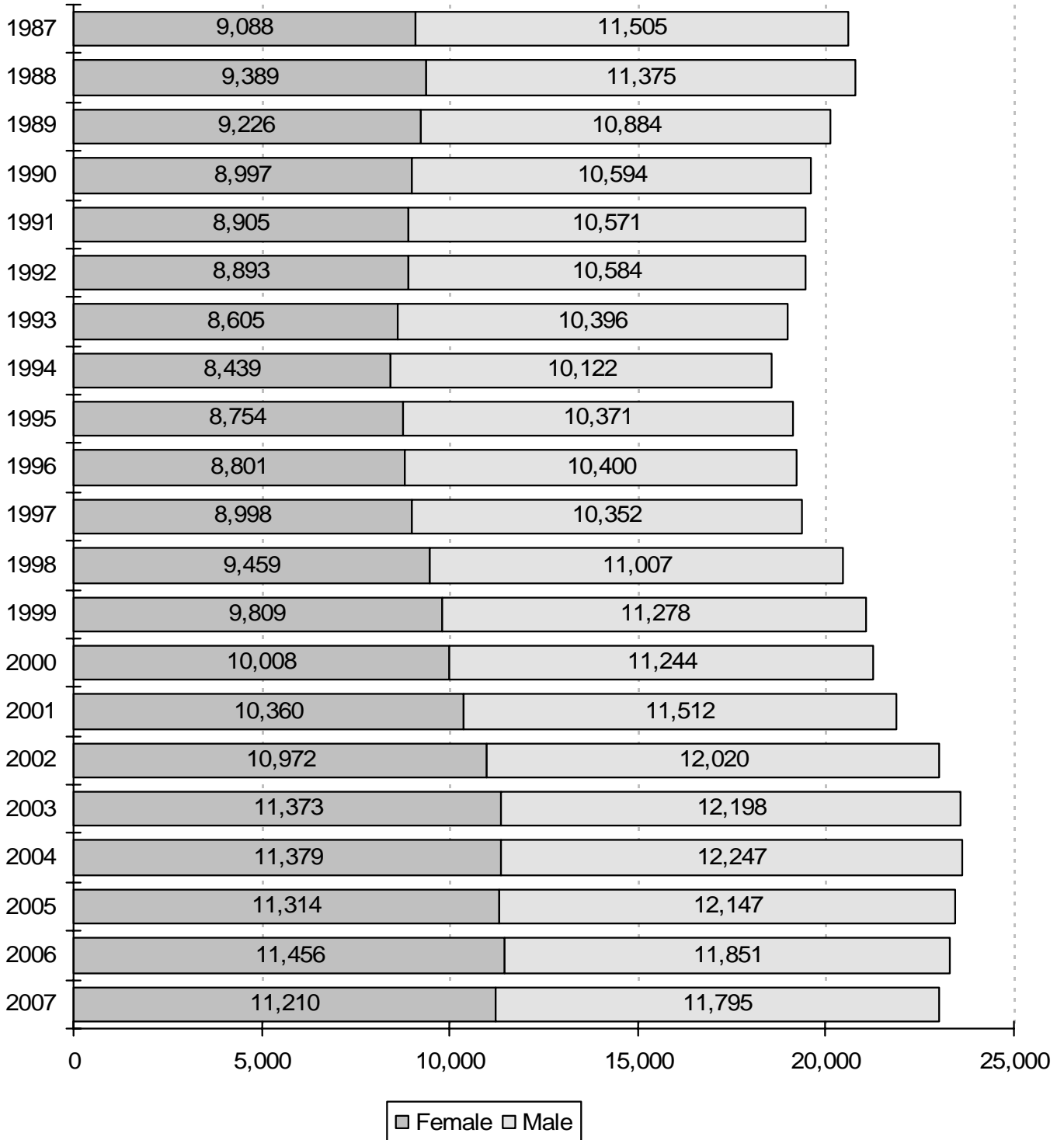
**ENROLLMENT BY TYPE OF ADMISSION  
OKLAHOMA STATE UNIVERSITY  
FALL SEMESTERS 1997 THROUGH 2007**

Fall	New Freshmen*	% Inc / Dec	Continuing	% Inc / Dec	Readmission	% Inc / Dec	New Transfer	% Inc / Dec	Non-Degree	% Inc / Dec	Concurrent	% Inc / Dec	Total	% Inc / Dec
1997	2,302		13,304		1,081		2,271		70		33		19,061	
1998	2,567	11.5%	13,994	5.2%	931	-13.9%	2,536	11.7%	100	42.9%	41	24.2%	20,169	5.8%
1999	2,832	10.3%	15,274	9.1%	126	-86.5%	2,398	-5.4%	96	-4.0%	67	63.4%	20,793	3.1%
2000	3,013	6.4%	14,501	-5.1%	971	670.6%	2,272	-5.3%	135	40.6%	68	1.5%	20,960	0.8%
2001	3,103	3.0%	14,933	3.0%	961	-1.0%	2,363	4.0%	153	13.3%	70	2.9%	21,583	3.0%
2002	3,201	3.2%	15,753	5.5%	1,089	13.3%	2,506	6.1%	84	-45.1%	67	-4.3%	22,700	5.2%
2003	3,430	7.2%	16,106	2.2%	941	-13.6%	2,675	6.7%	54	-35.7%	68	1.5%	23,274	2.5%
2004	3,264	-4.8%	16,274	1.0%	874	-7.1%	2,764	3.3%	87	61.1%	67	-1.5%	23,330	0.2%
2005	3,315	1.6%	16,180	-0.6%	780	-10.8%	2,754	-0.4%	80	-8.0%	56	-16.4%	23,165	-0.7%
2006	3,236	-2.4%	16,189	0.1%	648	-16.9%	2,789	1.3%	57	-28.8%	80	42.9%	22,999	-0.7%
2007	3,209	-0.8%	16,016	-1.1%	590	-9.0%	2,715	-2.7%	69	21.1%	94	17.5%	22,693	-1.3%

Note: This table excludes 312 professional students for Fall 2007. However, this table does include OSU-Tulsa figures for all years listed and will not match the figures for this page in the Student Profile books prior to Fall 2003. The percentage increase or decrease in enrollment between two semesters is shown in the "% Inc / Dec" column. Example: There was a 17.5% increase in enrollment of concurrents from Fall 2006 to Fall 2007.

\* New freshmen counts exclude concurrent high school students and non-degree-seeking students for all years listed. Student Profile books prior to Fall 2006 include new concurrent high school students in the new freshmen counts.

**ENROLLMENT BY GENDER**  
**OKLAHOMA STATE UNIVERSITY**  
**FALL SEMESTERS 1987 THROUGH 2007**



*Note:* This chart includes professional students and OSU-Tulsa students for all years listed. Hence, these figures will not match the figures in the Student Profiles prior to 2003.

**ENROLLMENT BY CLASSIFICATION  
OKLAHOMA STATE UNIVERSITY  
FALL SEMESTERS 1987 THROUGH 2007**

Year	Freshmen	Sophomores	Juniors	Seniors	Special Undergrads	Graduates	Professional	On-Campus Total	Off-Campus OSU-T & TAFB	Grand Total
1987	4,185	3,629	4,009	4,332	7	3,678	276	20,116	477	20,593
1988	4,485	3,761	3,824	4,187	4	3,571	276	20,108	656	20,764
1989	4,036	3,791	3,809	4,004	1	3,454	259	19,354	756	20,110
1990	3,526	3,787	3,693	4,037	0	3,561	254	18,858	733	19,591
1991	3,321	3,431	3,996	4,102	3	3,601	252	18,706	770	19,476
1992	3,251	3,294	3,678	4,285	20	3,759	269	18,556	921	19,477
1993	3,161	3,200	3,727	4,195	22	3,636	272	18,213	788	19,001
1994	3,187	3,034	3,612	4,215	41	3,424	271	17,784	777	18,561
1995	3,446	3,040	3,646	4,273	34	3,664	275	18,378	747	19,125
1996	3,427	3,226	3,508	4,311	47	3,658	284	18,461	740	19,201
1997	3,378	3,308	3,683	4,168	68	3,625	289	18,519	831	19,350
1998	3,535	3,464	3,874	4,379	70	3,902	297	19,521	945	20,466
1999	4,068	3,543	3,923	4,235	45	3,616	294	19,724	1,363	21,087
2000	4,148	3,765	3,834	4,339	46	3,436	292	19,860	1,392	21,252
2001	4,361	3,886	3,925	4,234	51	3,526	289	20,272	1,600	21,872
2002	4,473	3,944	4,115	4,458	49	3,818	292	21,149	1,843	22,992
2003	4,649	4,083	4,197	4,548	14	3,816	297	21,604	1,967	23,571
2004	4,462	4,056	4,266	4,604	105	3,787	296	21,576	2,050	23,626
2005	4,325	4,035	4,391	4,736	97	3,522	296	21,402	2,059	23,461
2006	4,143	4,099	4,383	4,658	109	3,535	308	21,235	2,072	23,307
2007	4,034	3,977	4,262	4,602	133	3,636	312	20,956	2,049	23,005

Note: Effective 2000, Off-Campus OSU-T & Tinker Air Force Base column reflects OSU-Tulsa enrollment only.

**ENROLLMENT BY ETHNICITY  
OKLAHOMA STATE UNIVERSITY  
FALL SEMESTERS 1997 THROUGH 2007**

Fall Semester	White		African American		Native American		Hispanic		Asian		International		Total
	Number	%	Number	%	Number	%	Number	%	Number	%	Number	%	
1997	14,997	77.5%	537	2.8%	1,213	6.3%	303	1.6%	374	1.9%	1,926	10.0%	<b>19,350</b>
1998	15,856	77.5%	560	2.7%	1,377	6.7%	332	1.6%	363	1.8%	1,978	9.7%	<b>20,466</b>
1999	16,390	77.7%	694	3.3%	1,453	6.9%	384	1.8%	366	1.7%	1,800	8.5%	<b>21,087</b>
2000	16,507	77.7%	709	3.3%	1,555	7.3%	347	1.6%	366	1.7%	1,768	8.3%	<b>21,252</b>
2001	16,753	76.6%	720	3.3%	1,656	7.6%	400	1.8%	379	1.7%	1,964	9.0%	<b>21,872</b>
2002	17,475	76.0%	766	3.3%	1,784	7.8%	415	1.8%	375	1.6%	2,177	9.5%	<b>22,992</b>
2003	17,905	76.0%	778	3.3%	1,838	7.8%	444	1.9%	371	1.6%	2,235	9.5%	<b>23,571</b>
2004	17,943	75.9%	918	3.9%	1,896	8.0%	447	1.9%	389	1.6%	2,033	8.6%	<b>23,626</b>
2005	17,894	76.3%	917	3.9%	1,973	8.4%	523	2.2%	388	1.7%	1,766	7.5%	<b>23,461</b>
2006	17,769	76.2%	959	4.1%	1,990	8.5%	533	2.3%	411	1.8%	1,645	7.1%	<b>23,307</b>
2007	17,443	75.8%	923	4.0%	1,993	8.7%	525	2.3%	388	1.7%	1,733	7.5%	<b>23,005</b>

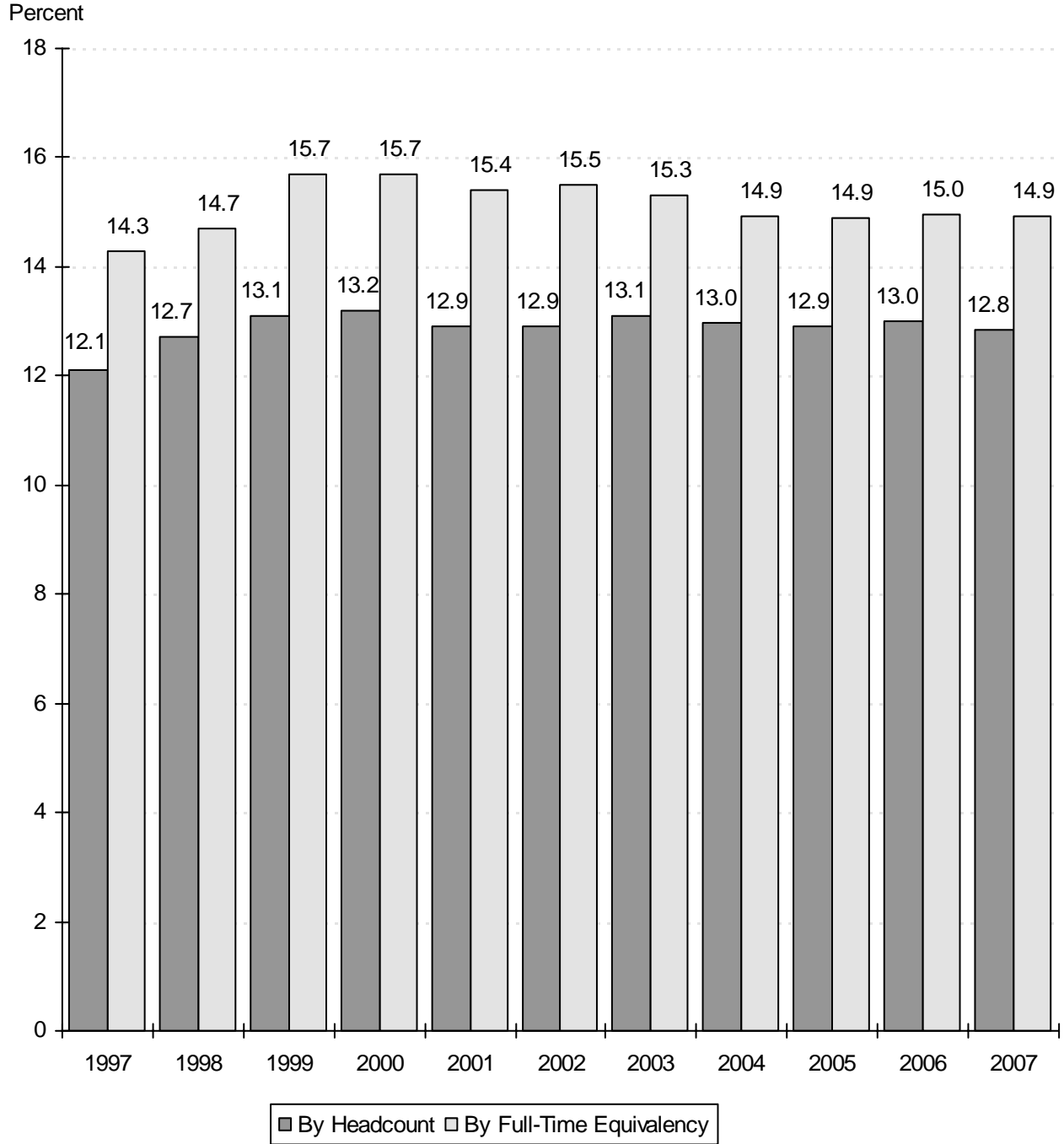
Note: This table includes professional students and OSU-Tulsa students for all years listed. Student Profile books prior to Fall 2003 do not contain OSU-Tulsa students on this page.



**OSU ENROLLMENT AS A PERCENT OF TOTAL ENROLLMENT  
IN THE OKLAHOMA STATE SYSTEMS (PUBLIC)**

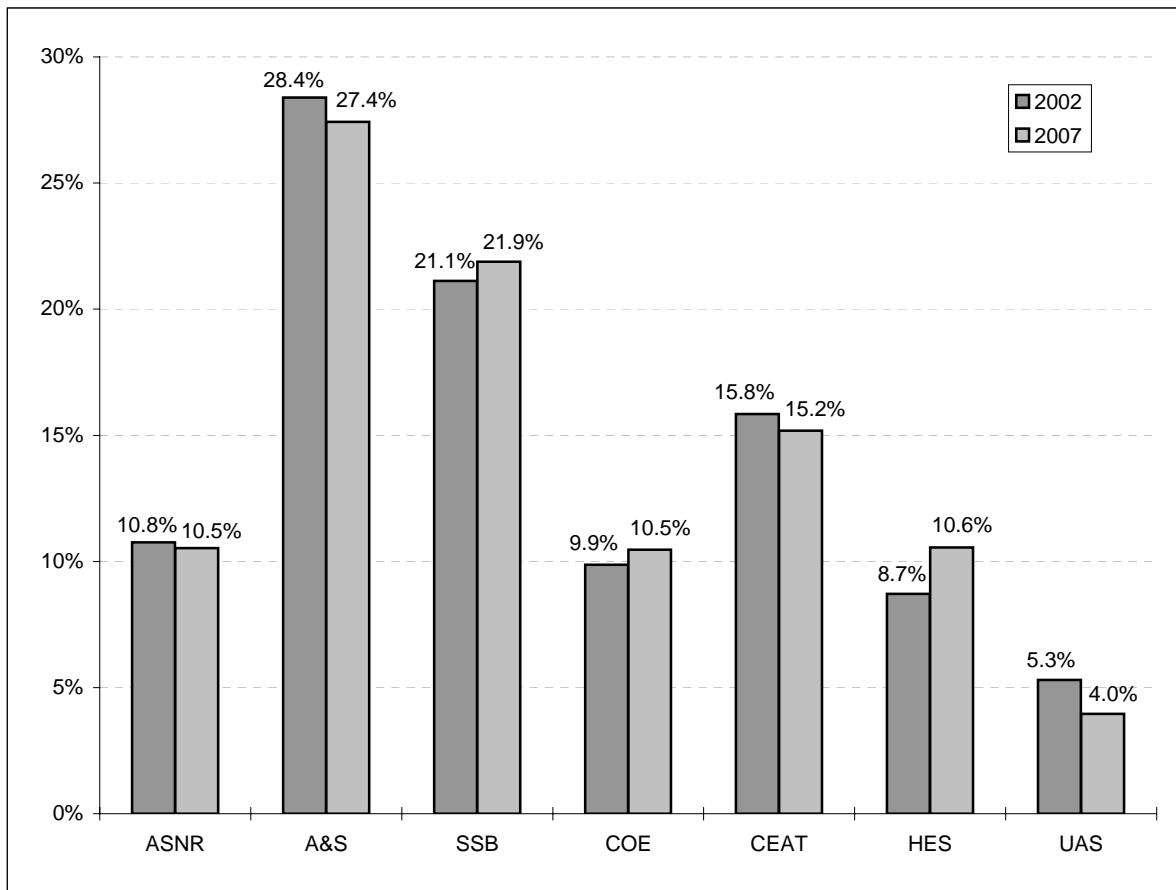
**OKLAHOMA STATE UNIVERSITY**

**FALL SEMESTERS 1997 THROUGH 2007**



Source: Preliminary Enrollment Report for Oklahoma Higher Education Fall 2007,  
Oklahoma State Regents for Higher Education.

**COMPARISON OF DISTRIBUTION OF UNDERGRADUATE MAJORS BY COLLEGE  
OKLAHOMA STATE UNIVERSITY  
FALL SEMESTERS 2002 AND 2007**



**UNDERGRADUATE MAJORS BY COLLEGE  
OKLAHOMA STATE UNIVERSITY  
FALL SEMESTERS 2002 THROUGH 2007**

Year	Ag. Sci. & Nat. Res.	Arts & Sciences	Spears Sch. of Bus.	Education	Engr., Arch., & Tech.	Human Envir. Sci.	Univ. Acad. Services	Total
2002	1,942	5,123	3,810	1,780	2,858	1,573	957	<b>18,043</b>
2003	1,941	5,332	4,043	1,836	2,885	1,723	923	<b>18,683</b>
2004	1,945	5,484	4,016	1,982	2,838	1,826	698	<b>18,789</b>
2005	1,922	5,412	4,038	2,081	2,874	1,868	714	<b>18,909</b>
2006	1,829	5,352	4,010	2,039	2,804	1,911	792	<b>18,737</b>
2007	1,933	5,038	4,019	1,922	2,790	1,939	727	<b>18,368</b>

Note: Students are reported in the college in which they are enrolled. This page includes students enrolled in OSU-Tulsa. Student Profile books prior to Fall 2003 do not contain OSU-Tulsa students on this page.

**ENROLLMENT CHANGES  
OKLAHOMA STATE UNIVERSITY  
FALL SEMESTERS 2002 AND 2007**

	2002	2007	% Change
<b><u>UNDERGRADUATE MAJORS</u></b>			
Agricultural Sciences & Natural Resources	1,942	1,933	-0.5%
Arts & Sciences	5,123	5,038	-1.7%
Spears School of Business	3,810	4,019	5.5%
Education	1,780	1,922	8.0%
Engineering, Architecture, & Technology	2,858	2,790	-2.4%
Human Environmental Sciences	1,573	1,939	23.3%
University Academic Services	957	727	-24.0%
<b><u>AGE</u></b>			
18 & Under	1,689	1,833	8.5%
19	3,020	2,981	-1.3%
20	3,106	3,056	-1.6%
21	3,280	3,250	-0.9%
22	2,767	2,914	5.3%
23-29	5,918	5,956	0.6%
30-39	1,884	1,819	-3.5%
40 & Over	1,328	1,196	-9.9%
<b><u>CLASSIFICATION</u></b>			
New Freshmen	3,265	3,191	-2.3%
Other Freshmen	1,242	857	-31.0%
Sophomores*	4,032	4,105	1.8%
Juniors*	4,504	4,777	6.1%
Seniors	4,916	5,275	7.3%
Specials	585	562	-3.9%
Graduates	4,156	3,926	-5.5%
Professional	292	312	6.8%
<b><u>RESIDENT STATUS</u></b>			
In-State	17,893	17,596	-1.7%
Out-of-State	2,922	3,676	25.8%
International	2,177	1,733	-20.4%
<b><u>ETHNICITY</u></b>			
White	17,475	17,443	-0.2%
African American	766	923	20.5%
Native American	1,784	1,993	11.7%
Hispanic	415	525	26.5%
Asian	375	388	3.5%
International	2,177	1,733	-20.4%
<b><u>GENDER</u></b>			
Female	10,972	11,210	2.2%
Male	12,020	11,795	-1.9%
<b>OVERALL ENROLLMENT</b>	<b>22,992</b>	<b>23,005</b>	<b>0.1%</b>

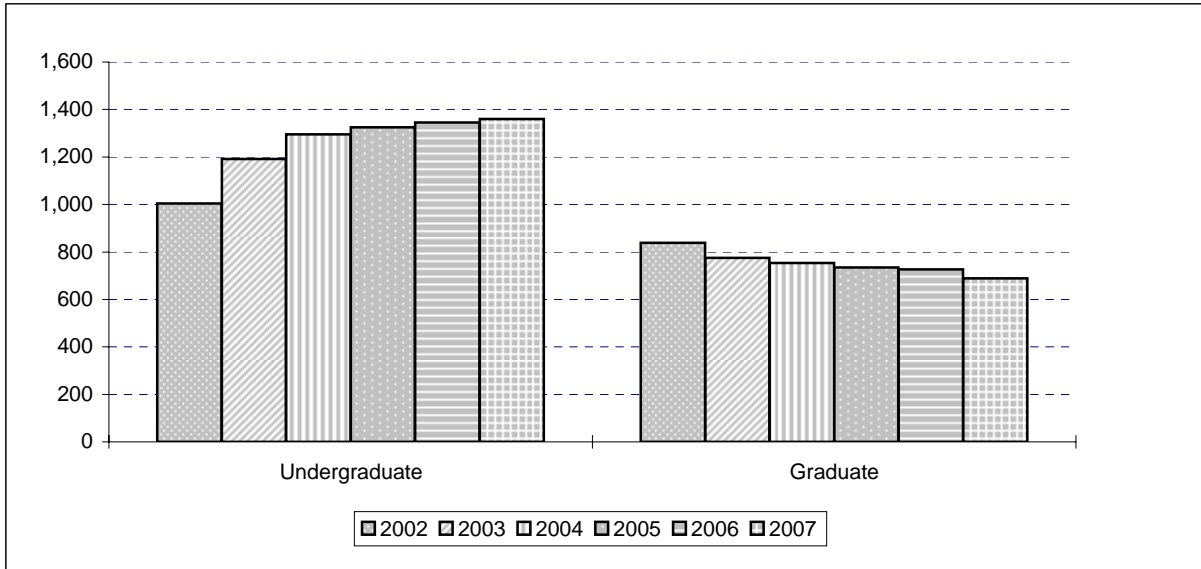
Note: This table includes professional students and OSU-Tulsa students. Student Profile books prior to Fall 2003 do not contain OSU-Tulsa students on this page.

\* 17 sophomores and 1 junior in this table for 2007 are in their first year of college and thus listed in other tables as new freshmen.

\* Student Profile books prior to Fall 2003 include non-degree-seeking new freshmen in the New Freshmen counts

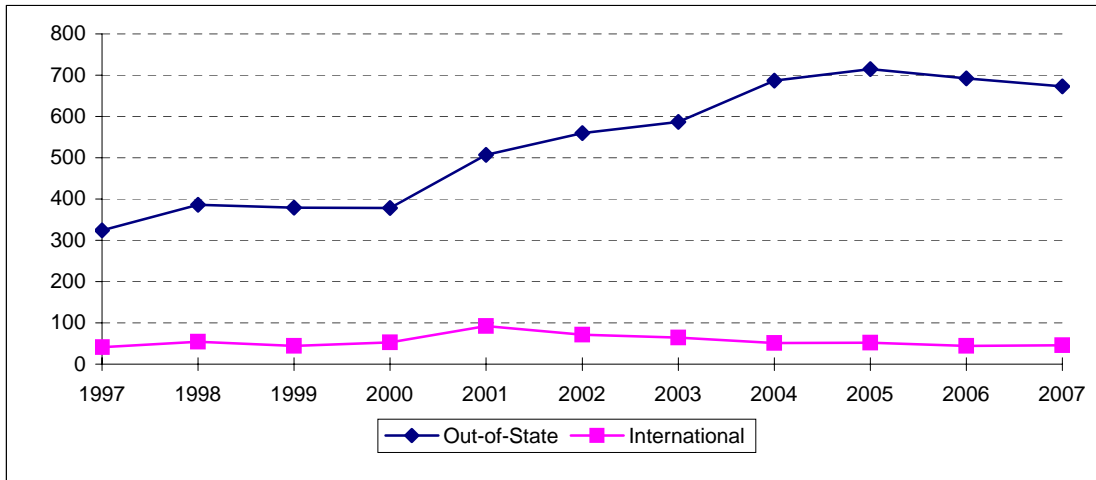
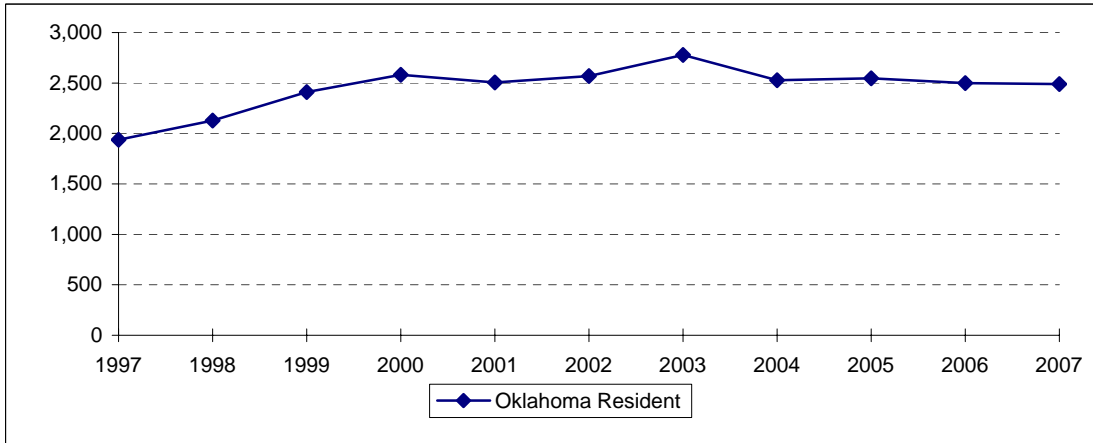
\* Student Profile books prior to Fall 2006 include new concurrent high school students in the New Freshmen counts.

**ENROLLMENT CHANGES  
OKLAHOMA STATE UNIVERSITY AT TULSA  
FALL SEMESTERS 2002 THROUGH 2007**



Classification	2002	2003	2004	2005	2006	2007	% Change 2006 to 2007
<b>Undergraduate</b>	<b>1,004</b>	<b>1,192</b>	<b>1,296</b>	<b>1,325</b>	<b>1,345</b>	<b>1,360</b>	<b>1.1%</b>
Freshman	34	46	25	13	25	14	-44.0%
Sophomore	88	112	115	103	96	128	33.3%
Junior	389	440	501	491	521	515	-1.2%
Senior	458	554	607	681	675	673	-0.3%
Special	35	40	48	37	28	30	7.1%
<b>Graduate</b>	<b>839</b>	<b>775</b>	<b>754</b>	<b>734</b>	<b>727</b>	<b>689</b>	<b>-5.2%</b>
Special	203	188	208	199	191	160	-16.2%
Master	542	507	435	415	421	417	-1.0%
Doctorate	94	80	111	120	115	112	-2.6%
<b>Grand Total</b>	<b>1,843</b>	<b>1,967</b>	<b>2,050</b>	<b>2,059</b>	<b>2,072</b>	<b>2,049</b>	<b>-1.1%</b>

**NEW FRESHMEN ENROLLMENT BY RESIDENCY  
OKLAHOMA STATE UNIVERSITY  
FALL SEMESTERS 1997 THROUGH 2007**



Fall Semester	Oklahoma Resident	Out-of-State	International	Total
1997	1,937	324	41	2,302
1998	2,127	386	54	2,567
1999	2,409	379	44	2,832
2000	2,582	378	53	3,013
2001	2,504	507	92	3,103
2002	2,570	560	71	3,201
2003	2,779	587	64	3,430
2004	2,526	687	51	3,264
2005	2,548	715	52	3,315
2006	2,500	692	44	3,236
2007	2,490	673	46	3,209

Note: This table includes students at OSU-Tulsa, but does not include non-degree-seeking new freshman and new concurrent high school students.  
 Student Profile books prior to Fall 2003 do not contain OSU-Tulsa students on this page.  
 Student Profile books prior to Fall 2006 contain new concurrent high school students on this page.

