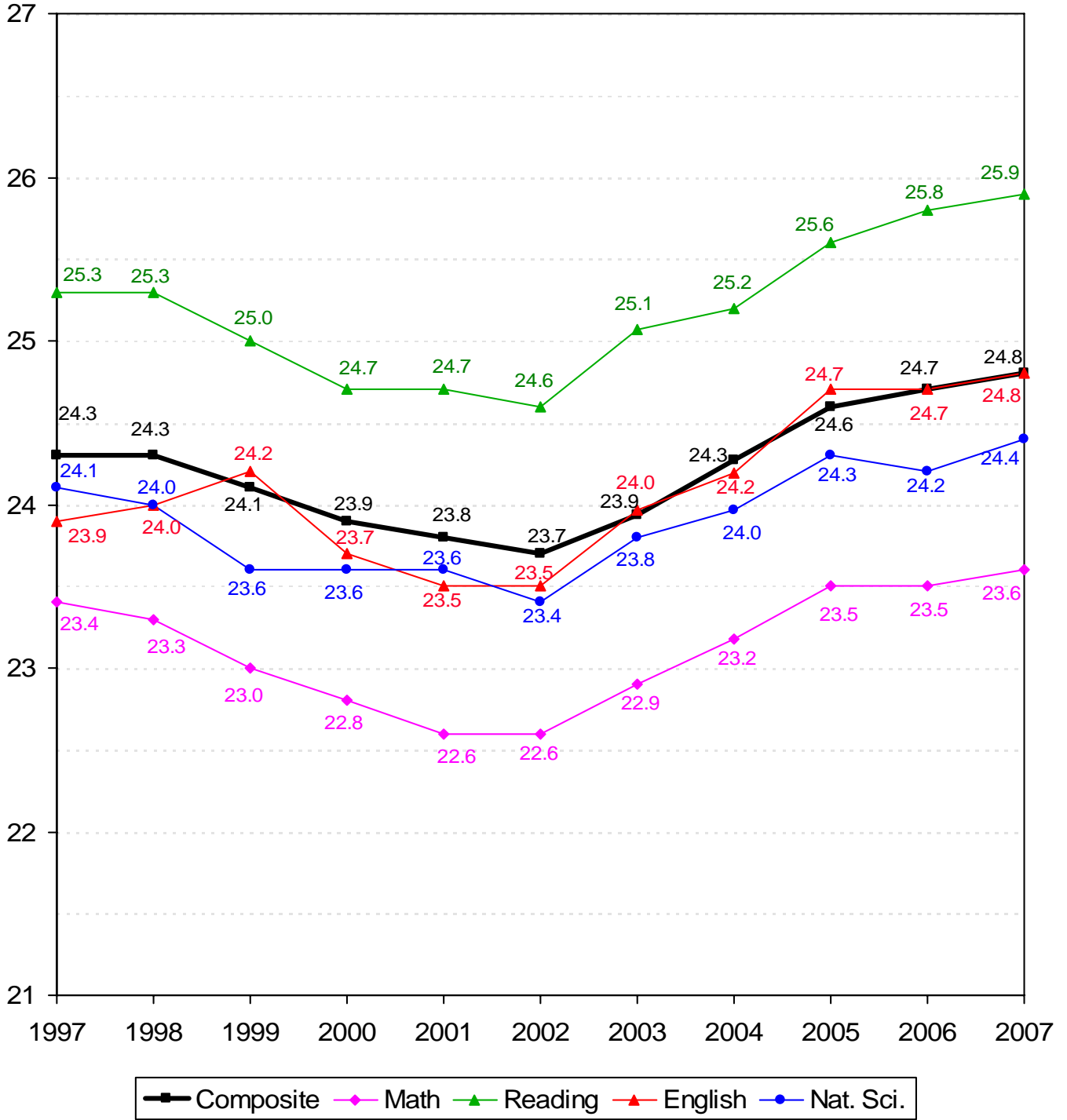


ACADEMIC INFORMATION

TEN-YEAR COMPARISON OF ACT SCORES FOR NEW FRESHMEN
OKLAHOMA STATE UNIVERSITY
FALL SEMESTERS 1997 THROUGH 2007



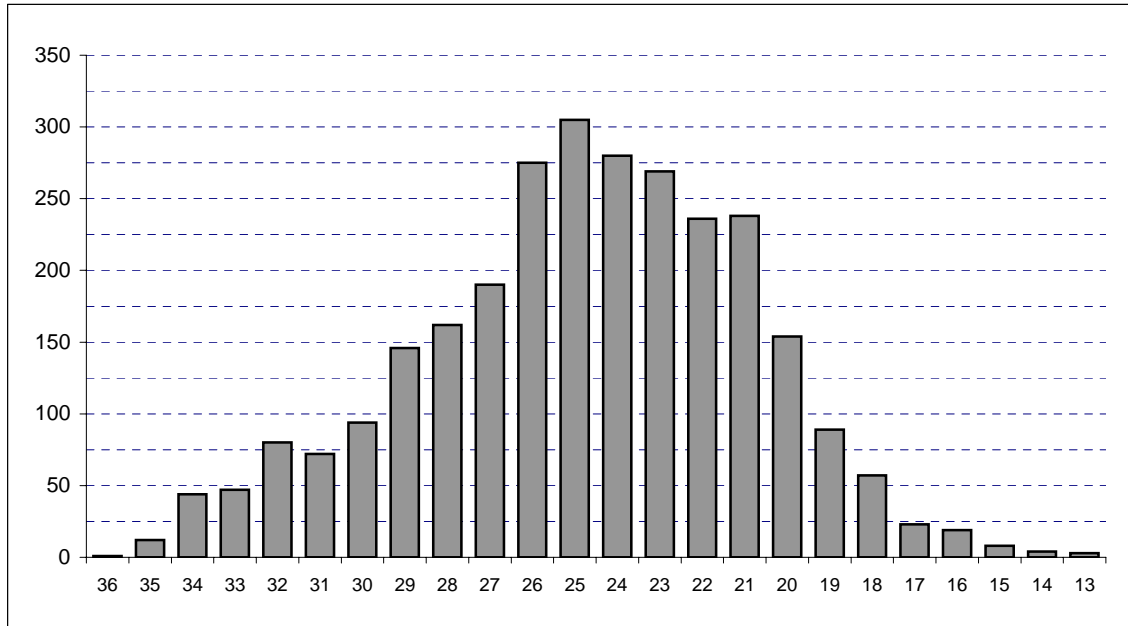
Note: Averages reflect the highest value for each subscore that a student received. Beginning in 2003, ACT composite scores are the average of the highest of each subscore received.

**COMPOSITE ACT AND SAT AVERAGES OF NEW FRESHMEN BY COLLEGE
OKLAHOMA STATE UNIVERSITY
FALL SEMESTER 2007**

College	ACT		SAT	
	Count	Composite	Count	Composite
Ag. Sciences & Natural Res.	349	24.9	44	1,129
Arts & Sciences	803	25.1	99	1,168
Spears School of Business	469	24.7	70	1,122
Education	211	23.9	29	1,097
Engineering & Architecture	387	27.4	60	1,218
Div. of Technology	121	25.4	16	1,155
Human Environmental Sci.	254	23.7	23	1,148
Overall College Average	2,594	25.1	341	1,154
University Academic Services	214	20.8	41	937
Overall Average	2,808	24.8	382	1,131

Note: Composite scores in this table are calculated using the highest subscores obtained for each student. If students have taken both the ACT and the SAT, only the higher score is reported.

**DISTRIBUTION OF NEW FRESHMEN BY COMPOSITE ACT SCORE
OKLAHOMA STATE UNIVERSITY
FALL SEMESTER 2007**



Composite ACT Score	Female	Male	Total	Percent	Cumulative Percent
36	0	1	1	0.04%	0.04%
35	2	10	12	0.43%	0.46%
34	14	30	44	1.57%	2.03%
33	20	27	47	1.67%	3.70%
32	36	44	80	2.85%	6.55%
31	31	41	72	2.56%	9.12%
30	42	52	94	3.35%	12.46%
29	71	75	146	5.20%	17.66%
28	76	86	162	5.77%	23.43%
27	95	95	190	6.77%	30.20%
26	150	125	275	9.79%	39.99%
25	162	143	305	10.86%	50.85%
24	140	140	280	9.97%	60.83%
23	145	124	269	9.58%	70.41%
22	154	82	236	8.40%	78.81%
21	138	100	238	8.48%	87.29%
20	103	51	154	5.48%	92.77%
19	50	39	89	3.17%	95.94%
18	33	24	57	2.03%	97.97%
17	15	8	23	0.82%	98.79%
16	12	7	19	0.68%	99.47%
15	1	7	8	0.28%	99.75%
14	2	2	4	0.14%	99.89%
13	2	1	3	0.11%	100.0%
Total	1,494	1,314	2,808	100.0%	100.0%

Note: ACT scores are only included in this table if they represent the highest test score available for the student. If the student's SAT score (converted to an ACT equivalent) is higher, then the ACT score is not included here.

**ACT AND SAT AVERAGES OF NEW FRESHMEN BY ETHNICITY AND GENDER
OKLAHOMA STATE UNIVERSITY
FALL SEMESTER 2007**

Ethnicity	ACT		SAT	
	Count	Composite	Count	Composite
White	2,273	25.1	293	1,148
African American	119	21.0	22	950
Native American	300	24.0	17	1,118
Hispanic	62	25.3	21	1,184
Asian	47	24.4	7	1,104
Gender				
Female	1,494	24.4	159	1,118
Male	1,314	25.3	223	1,140
Total	2,808	24.8	382	1,131

Note: Composite scores in this table are calculated using the highest subscores obtained for each student. If students have taken both the ACT and the SAT, only the higher score is reported.

**OKLAHOMA HIGH SCHOOL ACT PARTICIPATION STATISTICS
OKLAHOMA STATE UNIVERSITY
2002 THROUGH 2007**

	2002		2003		2004		2005		2006		2007	
High School Graduates in Oklahoma ¹	37,699		37,688		38,109		37,446		37,940		37,752	
Number of Oklahoma H.S. Students Taking ACT ^{2*}	26,717		27,009		26,556		26,297		26,425		26,360	
Total ACT Scores Received by OSU ^{2**}	9,579		9,758		9,468		9,506		9,256		9,167	
1st Choice / % of Scores Received	3,357	35.0%	3,412	35.0%	3,290	34.7%	3,405	35.8%	3,281	35.4%	3,421	37.3%
2nd - 6th Choices / % of Scores Received	6,222	65.0%	6,346	65.0%	6,178	65.3%	6,101	64.2%	5,975	64.6%	5,746	62.7%
Applications Received by OSU	5,725		6,629		6,633		6,533		6,730		6,415	
New Freshmen Accepted by OSU	5,253		5,930		5,881		5,719		5,853		5,651	
% of Applications Received	91.8%		89.5%		88.7%		87.5%		87.0%		88.1%	
New Freshmen Enrolled at OSU	3,303		3,488		3,264		3,315		3,236		3,209	
% of Freshmen Accepted	62.9%		58.8%		55.5%		58.0%		55.3%		56.8%	

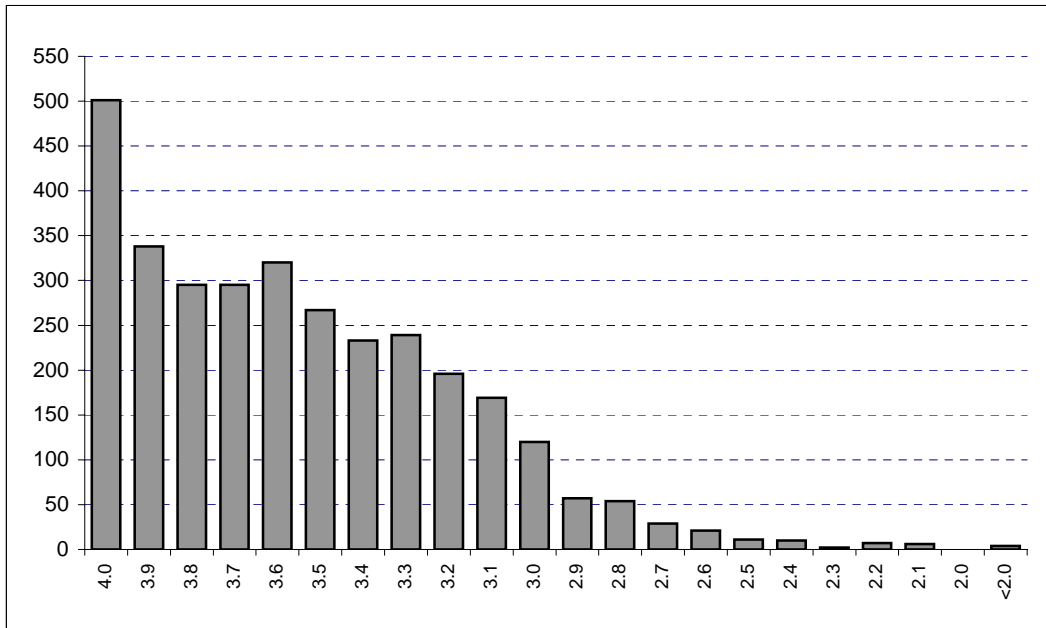
¹Source - 2005-2006 Student Data Report, Oklahoma State Regents for Higher Education (Projections for 2007)

²Source - ACT High School Profile Report, The Graduating Class of 2007, Oklahoma

*This includes only Oklahoma high school graduates who took the ACT prior to graduation in the year indicated.

**Includes only those students eligible for college enrollment in the fall semester of the year indicated. Does not include multiple ACT scores for any one student. Student Profiles prior to Fall 2003 may include multiple ACT scores per person.

**DISTRIBUTION OF FRESHMEN GRADE POINT AVERAGES
OKLAHOMA STATE UNIVERSITY
FALL SEMESTER 2007**

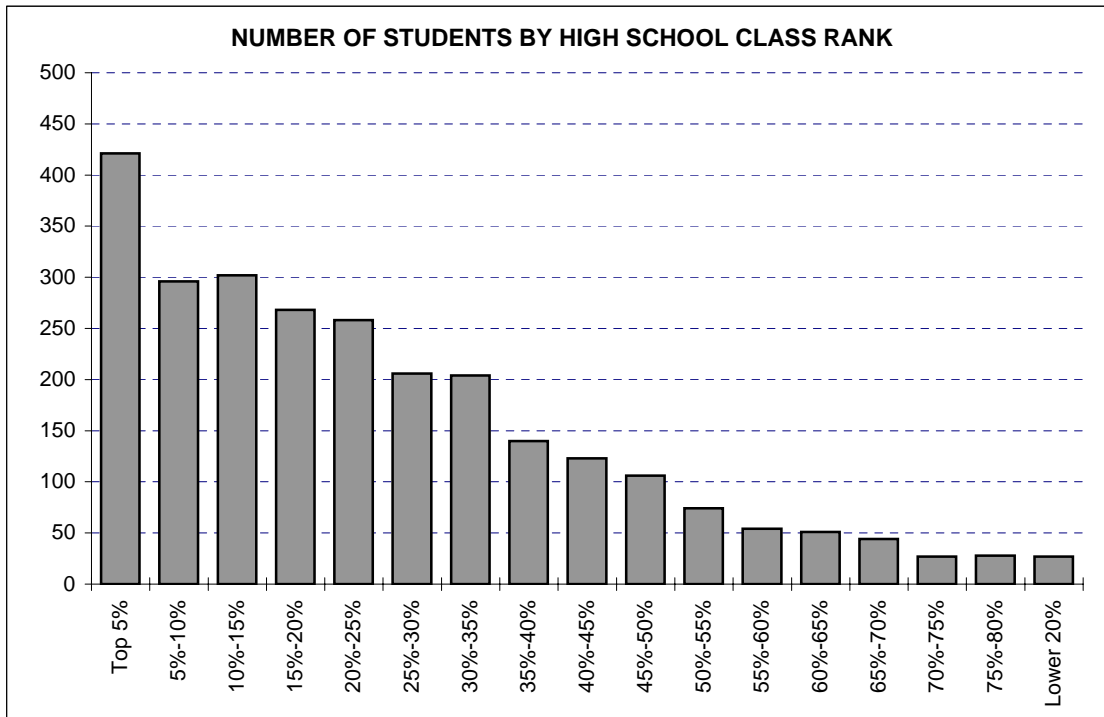


GPA	Number	Cumulative Number	Percent	Cumulative Percent
4.0	501	501	15.78%	15.78%
3.9	338	839	10.65%	26.43%
3.8	295	1,134	9.29%	35.73%
3.7	295	1,429	9.29%	45.02%
3.6	320	1,749	10.08%	55.10%
3.5	267	2,016	8.41%	63.52%
3.4	233	2,249	7.34%	70.86%
3.3	239	2,488	7.53%	78.39%
3.2	196	2,684	6.18%	84.56%
3.1	169	2,853	5.32%	89.89%
3.0	120	2,973	3.78%	93.67%
2.9	57	3,030	1.80%	95.46%
2.8	54	3,084	1.70%	97.16%
2.7	29	3,113	0.91%	98.08%
2.6	21	3,134	0.66%	98.74%
2.5	11	3,145	0.35%	99.09%
2.4	10	3,155	0.32%	99.40%
2.3	2	3,157	0.06%	99.46%
2.2	7	3,164	0.22%	99.68%
2.1	6	3,170	0.19%	99.87%
2.0	0	3,170	0.00%	99.87%
<2.0	4	3,174	0.13%	100.0%
Total	3,174	3,174	100.0%	100.0%

Note: 35 new freshmen (including international, home schooled, and adult admission students) did not supply a high school GPA.

The average high school GPA reported was 3.54. The average high school core GPA calculated was 3.43.

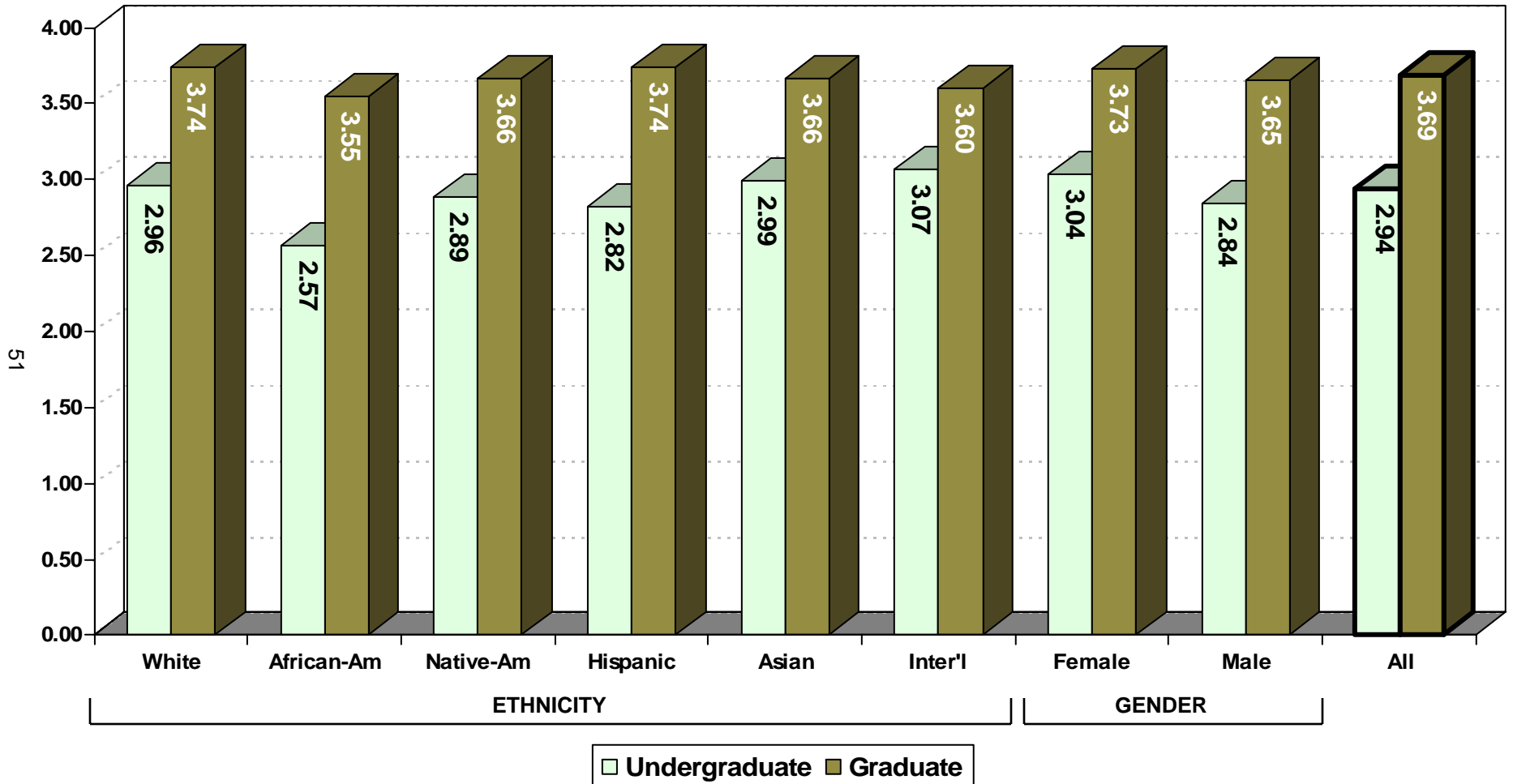
**RANK IN HIGH SCHOOL CLASS BY NUMBER OF NEW FRESHMEN & PERCENT IN EACH RANK
OKLAHOMA STATE UNIVERSITY
FALL SEMESTER 2007**



Rank	Number	Cumulative Number	Percent	Cumulative Percent
Top 5%	421	421	16.01%	16.01%
5%-10%	296	717	11.26%	27.27%
10%-15%	302	1,019	11.49%	38.76%
15%-20%	268	1,287	10.19%	48.95%
20%-25%	258	1,545	9.81%	58.77%
25%-30%	206	1,751	7.84%	66.60%
30%-35%	204	1,955	7.76%	74.36%
35%-40%	140	2,095	5.33%	79.69%
40%-45%	123	2,218	4.68%	84.37%
45%-50%	106	2,324	4.03%	88.40%
50%-55%	74	2,398	2.81%	91.21%
55%-60%	54	2,452	2.05%	93.27%
60%-65%	51	2,503	1.94%	95.21%
65%-70%	44	2,547	1.67%	96.88%
70%-75%	27	2,574	1.03%	97.91%
75%-80%	28	2,602	1.07%	98.97%
Lower 20%	27	2,629	1.03%	100.0%

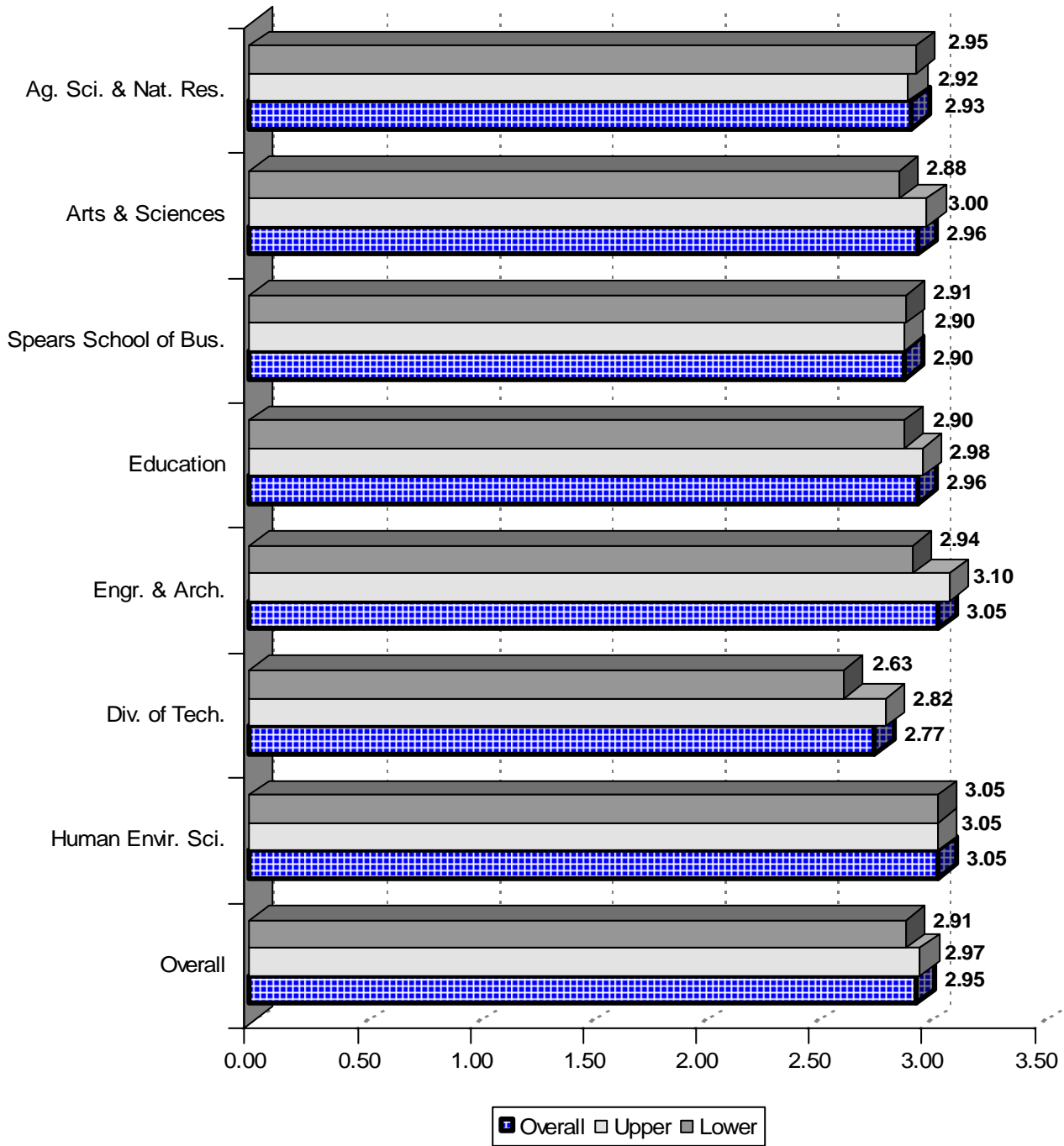
Note: 580 new freshmen (including international, home schooled, and adult admission students) did not supply a high school rank.

AVERAGE CUMULATIVE GRADE POINT AVERAGE BY ETHNICITY AND GENDER
OKLAHOMA STATE UNIVERSITY
FALL SEMESTER 2007



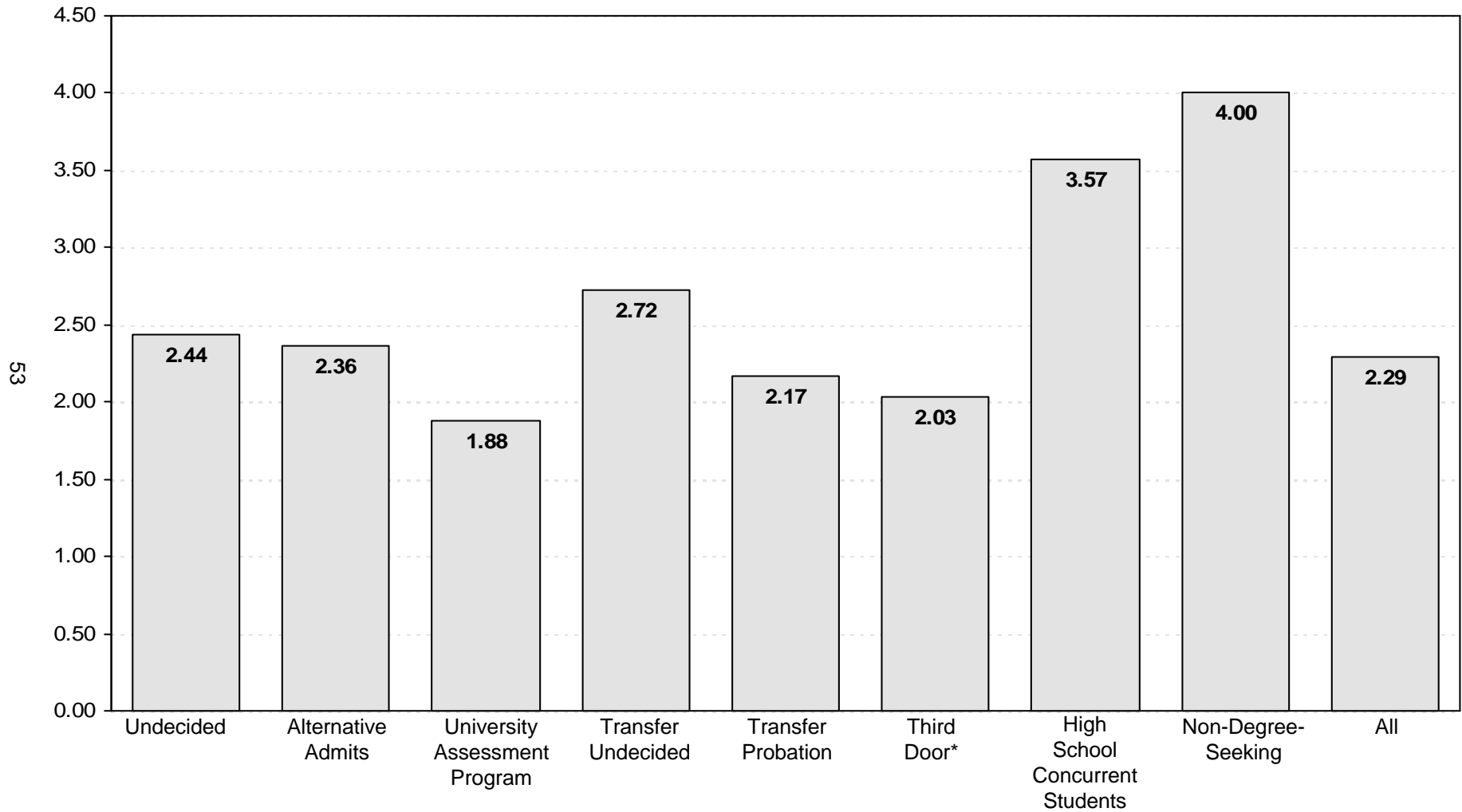
Note: The data presented above includes 13,435 undergraduates and 3,073 graduates for whom a cumulative GPA was reported. This chart excludes professional students, new transfers, and new freshmen, but includes students at OSU-Tulsa.

**AVERAGE CUMULATIVE GRADE POINT AVERAGE
OF UNDERGRADUATE STUDENTS BY COLLEGE AND DIVISION
OKLAHOMA STATE UNIVERSITY
FALL SEMESTER 2007**



Note: This chart includes 13,085 undergraduates enrolled for Fall 2007 for whom a cumulative GPA was reported. This chart excludes professional students, new freshmen, new transfers, and University Academic Services, but includes students enrolled at OSU-Tulsa.

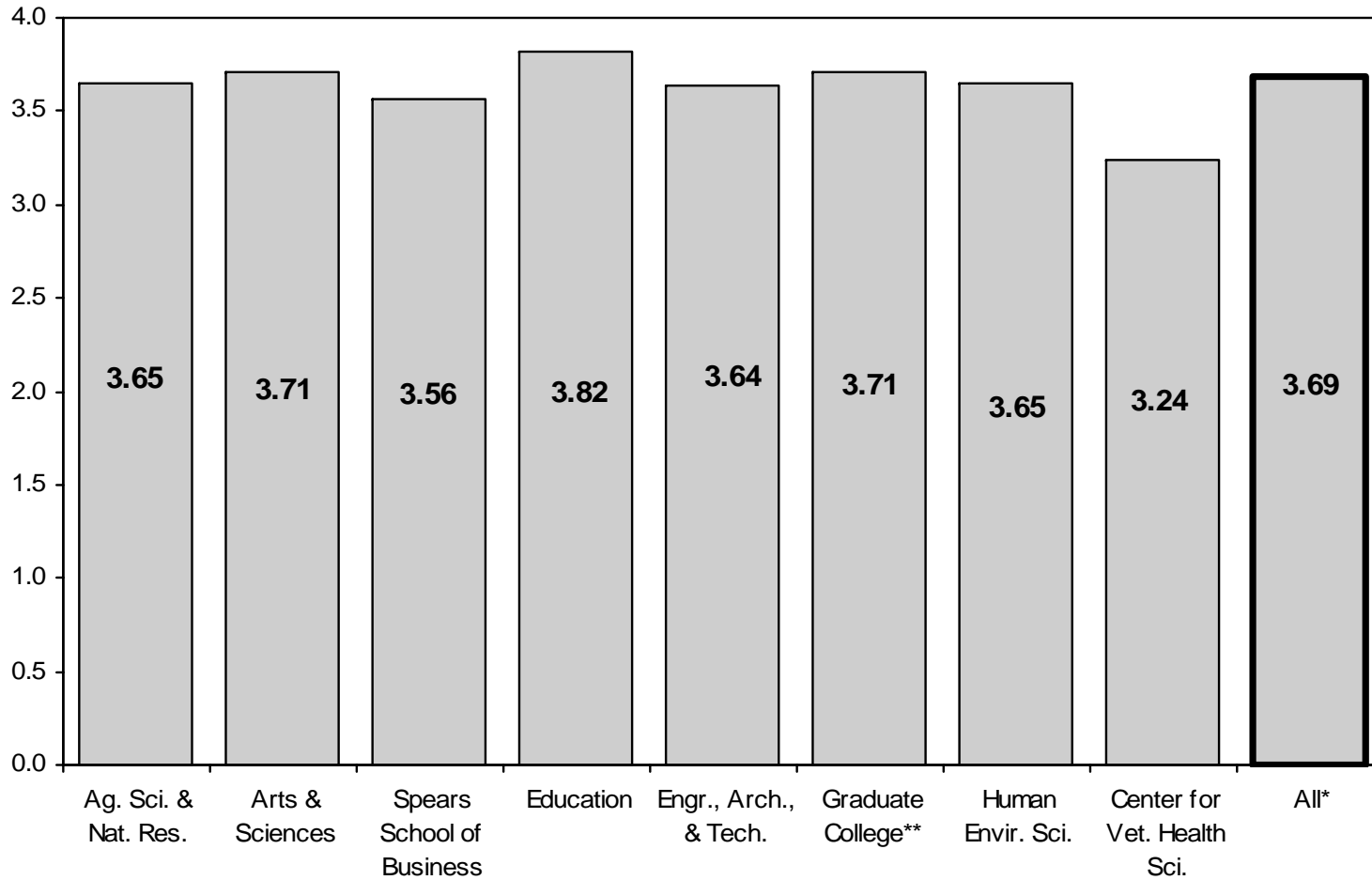
**AVERAGE CUMULATIVE GRADE POINT AVERAGE
OF UNIVERSITY ACADEMIC SERVICES STUDENTS
OKLAHOMA STATE UNIVERSITY
FALL SEMESTER 2007**



*The third door category includes only students admitted by their high school core GPA who are advised by University Academic Services.

Note: This chart includes 350 students enrolled in University Academic Services in the Fall 2007 semester for whom a cumulative GPA was reported.

**AVERAGE CUMULATIVE GRADE POINT AVERAGE
OF GRADUATE STUDENTS BY COLLEGE
OKLAHOMA STATE UNIVERSITY
FALL SEMESTER 2007**

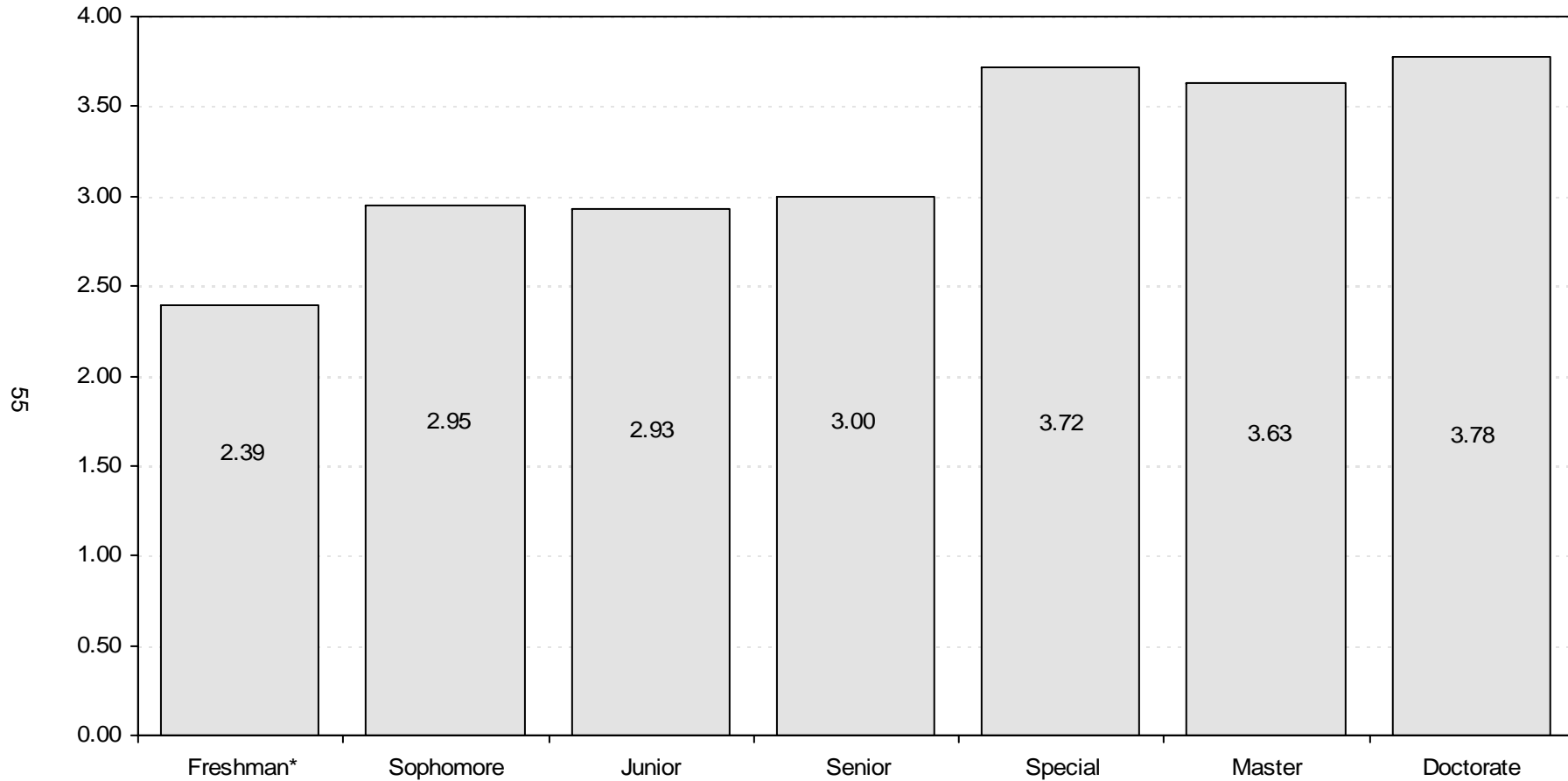


*Center for Veterinary Health Sciences' professional students are excluded from the overall average.

**Interdisciplinary graduate programs that do not have a specific area of specialization are reported in the Graduate College.

Note: This chart includes 3,073 graduate students and 225 professional students enrolled in the Fall 2007 semester for whom a cumulative GPA was reported. This chart does not include new transfer students but does include students enrolled at OSU-Tulsa.

**AVERAGE CUMULATIVE GRADE POINT AVERAGE
OF STUDENTS BY CLASS LEVEL
OKLAHOMA STATE UNIVERSITY
FALL SEMESTER 2007**



*Includes students enrolled previously who have earned fewer than 28 semester credit hours. This does not include Fall 2007 new freshmen.

Note: This chart includes 16,508 students enrolled in the Fall 2007 semester for whom a cumulative GPA was reported. This chart excludes professional students, new freshmen, and new transfer students, but includes students enrolled at OSU-Tulsa.