

ENROLLMENT PROJECTIONS

OKLAHOMA STATE UNIVERSITY FALL SEMESTER HEADCOUNT ENROLLMENT AND PROJECTIONS

Enrollment at Oklahoma State University showed a slight decrease for the Fall 2006 Semester with a headcount of 23,307. While the 2006 new freshmen decreased slightly due to higher admission requirements, OSU is proud of the accomplishments of this class, including an average ACT score of 24.7 and an increase in National Merit Scholars for the 2nd year. Also, because institutional diversity has been targeted as a priority, it is promising to note that ethnically diverse students, including African Americans, Native Americans, Hispanics, and Asian Americans, increased by almost 100.

The projections for future years presented in this section are mathematical models based on past trends in applications, admitted students, and subsequent enrollments, as well as retention rates and forecasts of high school graduates. Forecasts for Oklahoma high school graduates show numbers should remain relatively constant over the next 4 years. Because the OSU freshman class is made up of almost 80% Oklahoma residents, these forecasts are the primary source of projection numbers for freshman enrollment. The forecasts of Oklahoma high school graduates used in this section are based upon information from the Oklahoma State Department of Education and the State Regents for Higher Education. They assume that demographic trends such as immigration into and emigration out of the state will remain relatively constant.

While the majority of OSU freshmen are Oklahoma residents, the number of out-of-state freshmen has shown strong increases over the past years. In fact, the out-of-state new freshmen enrollment has increased more than 80% since Fall 2000. This is due in large part to continual bolstering of recruiting efforts in the state of Texas which includes OSU Enrollment Management offices in Houston and the Dallas-Ft. Worth area.

Graduate enrollment at OSU showed a slight increase for Fall 2006 Semester. This is especially encouraging considering graduate enrollment typically declines during upswings in the economy and improving job markets that are currently occurring in Oklahoma. The increase is also a positive sign after several years that showed substantial increases in graduate degrees granted.

In summary, several factors affect enrollment projections at OSU. Some of these factors depend on policy decisions originating with the Oklahoma State Regents for Higher Education and others depend on recruitment policies set by OSU administration. The impact of these policies, as well as changing admissions, enrollment, retention, scholarship, and recruiting practices, all have a role in determining future enrollment at Oklahoma State University. The Office of Institutional Research & Information Management will continue to monitor developments in these areas and assess their impact on enrollment.

**OKLAHOMA HIGH SCHOOL GRADUATES AND ACT TEST-TAKERS
1996-1997 THROUGH 2005-2006 ACTUAL**

Year	HS Grads	ACT Takers	Percent
1996-1997	33,645	24,134	71.7%
1997-1998	36,254	25,303	69.8%
1998-1999	37,396	26,455	70.7%
1999-2000	38,512	27,850	72.3%
2000-2001	38,344	27,910	72.8%
2001-2002	37,699	26,717	70.9%
2002-2003	37,688	27,009	71.7%
2003-2004	38,109	26,556	69.7%
2004-2005	37,446	26,297	70.2%
2005-2006*	37,145	26,425	71.1%

Sources : Student Data Report, Oklahoma State Regents for Higher Education, June 2006.

ACT High School Profile Report, HS Graduating Class 2006.

* 2005-2006 high school graduate count is a projection.

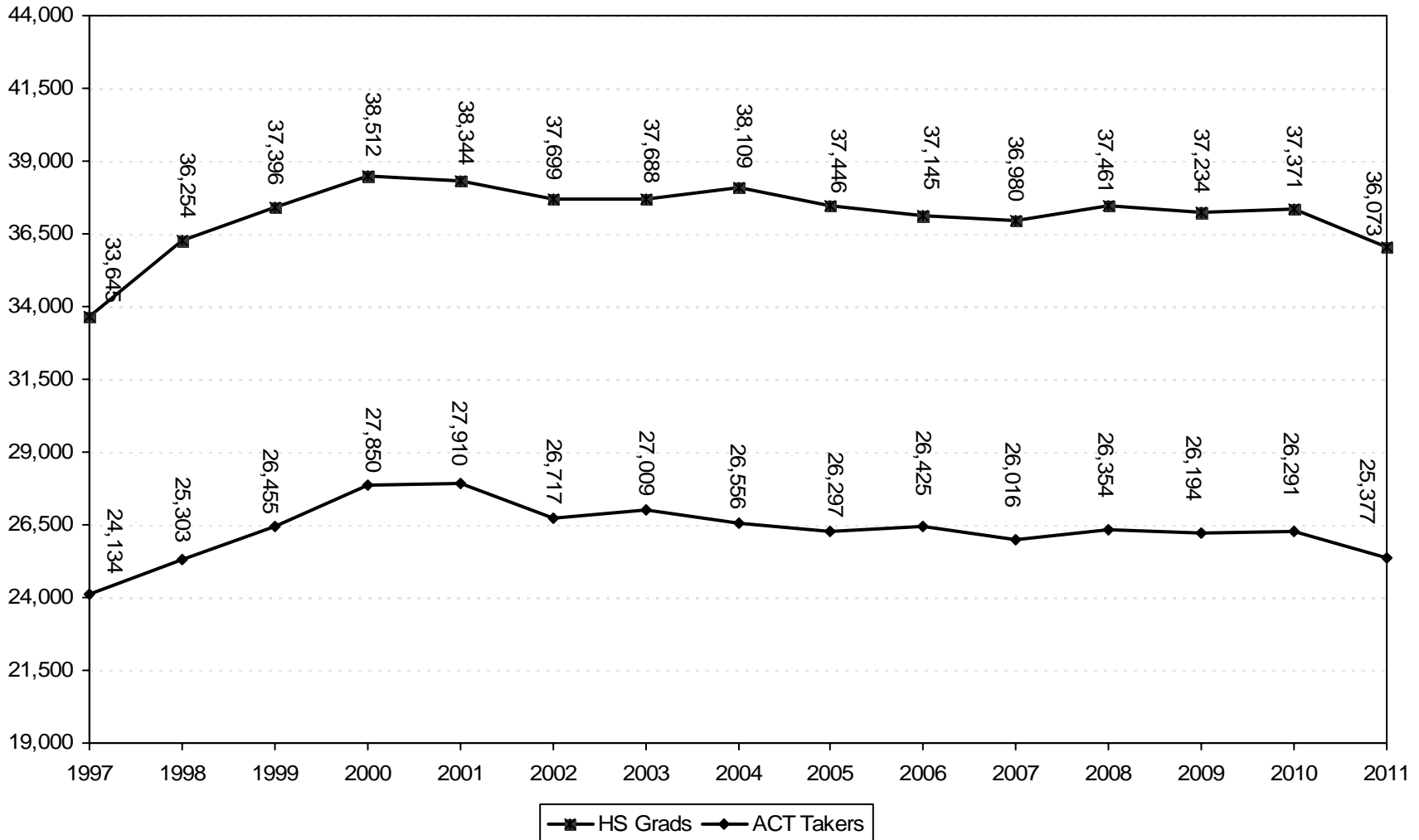
**PROJECTIONS OF OKLAHOMA HIGH SCHOOL GRADUATES
AND ACT TEST-TAKERS**

2006-2007	36,980	26,016	70.4%
2007-2008	37,461	26,354	70.4%
2008-2009	37,234	26,194	70.4%
2009-2010	37,371	26,291	70.4%
2010-2011	36,073	25,377	70.4%

Sources: Student Data Report, Oklahoma State Regents for Higher Education, June 2006.

Projections of ACT test-takers are based on past patterns of participation.

HIGH SCHOOL GRADUATES IN OKLAHOMA
1996-1997 THROUGH 2004-2005 ACTUAL, WITH PROJECTIONS TO 2010-2011



Note: High school graduate numbers are revised based on OSRHE Student Data Report, June 2006. Projections from 2006 – 2011 are also from the OSRHE Student Data Report, June 2006.

PROJECTION OF NEW FRESHMEN*
OKLAHOMA STATE UNIVERSITY
FALL SEMESTERS 1997 THROUGH 2006 (ACTUAL)
WITH PROJECTIONS THROUGH FALL 2011

Year	Resident	Nonresident US Citizen	International	Total
<u>Actual</u>				
1997	1,937	324	41	2,302
1998	2,127	386	54	2,567
1999	2,409	379	44	2,832
2000	2,582	378	53	3,013
2001	2,504	507	92	3,103
2002	2,570	560	71	3,201
2003	2,779	587	64	3,430
2004	2,526	687	51	3,264
2005	2,548	715	52	3,315
2006	2,500	692	44	3,236
<u>Projection</u>				
2007	2,375	692	49	3,116
2008	2,407	692	49	3,148
2009	2,392	692	49	3,133
2010	2,401	692	49	3,142
2011	2,317	692	49	3,058

Note: Projections are based on historical patterns of admitted new freshmen and enrolled new freshmen.

* New freshmen counts exclude concurrent high school students and non-degree-seeking students for all years listed.

Prior to the Fall 2001 semester, out-of-state recruiting efforts were expanded and contributed to the substantial increase in out-of-state new freshmen.

**HEADCOUNT ENROLLMENT PROJECTIONS
OKLAHOMA STATE UNIVERSITY
FALL SEMESTERS 1997 THROUGH 2006 ACTUAL, WITH PROJECTIONS THROUGH FALL 2011**

Year	Freshman		Sophomore	Junior	Senior	Special	Total	Master	Doctorate	Special	Total	Total OSU-Stillwater	CVHS	OSU-T	OSU-T	Other	Grand Total
	New	Other				Undergrad	Undergrad			Graduate	Graduate			Undergrad	Grad	Off-Campus	
Actual																	
1997	2,377	1,047	3,308	3,683	4,168	22	14,605	1,955	1,196	474	3,625	18,230	289	109	680	42	19,350
1998	2,645	935	3,464	3,874	4,379	25	15,322	2,090	1,224	588	3,902	19,224	297	140	717	88	20,466
1999	2,904	1,173	3,543	3,923	4,235	36	15,814	1,987	1,137	492	3,616	19,430	294	552	716	95	21,087
2000	3,072	1,076	3,765	3,834	4,339	46	16,132	1,983	1,133	320	3,436	19,568	292	527	865	0	21,252
2001	3,165	1,196	3,886	3,925	4,234	51	16,457	2,122	1,102	302	3,526	19,983	289	754	846	0	21,872
2002	3,265	1,208	3,944	4,115	4,458	49	17,039	2,340	1,180	298	3,818	20,857	292	1,004	839	0	22,992
2003	3,481	1,168	4,083	4,197	4,548	14	17,491	2,328	1,223	265	3,816	21,307	297	1,192	775	0	23,571
2004	3,263	1,199	4,056	4,266	4,604	105	17,493	2,204	1,201	382	3,787	21,280	296	1,296	754	0	23,626
2005	3,304	1,021	4,035	4,391	4,736	97	17,584	2,042	1,226	254	3,522	21,106	296	1,325	734	0	23,461
2006	3,221	922	4,099	4,383	4,658	109	17,392	2,005	1,239	291	3,535	20,927	308	1,345	727	0	23,307
Projection																	
2007	3,116	958	3,931	4,329	4,708	104	17,146	2,025	1,264	294	3,583	20,729	308	1,426	727	0	23,190
2008	3,148	940	3,855	4,177	4,652	104	16,876	2,045	1,289	297	3,631	20,507	308	1,511	749	0	23,075
2009	3,133	937	3,855	4,098	4,495	104	16,622	2,065	1,315	300	3,680	20,302	308	1,601	771	0	22,982
2010	3,142	930	3,829	4,090	4,413	104	16,508	2,086	1,341	303	3,730	20,238	308	1,698	794	0	23,038
2011	3,058	931	3,830	4,067	4,404	104	16,394	2,107	1,368	306	3,781	20,175	308	1,800	818	0	23,101

Note: New freshmen projections are based on historical patterns of admitted new freshmen and enrolled new freshmen. On-campus sophomore, junior, and senior projections are based on cohort survival rates.

