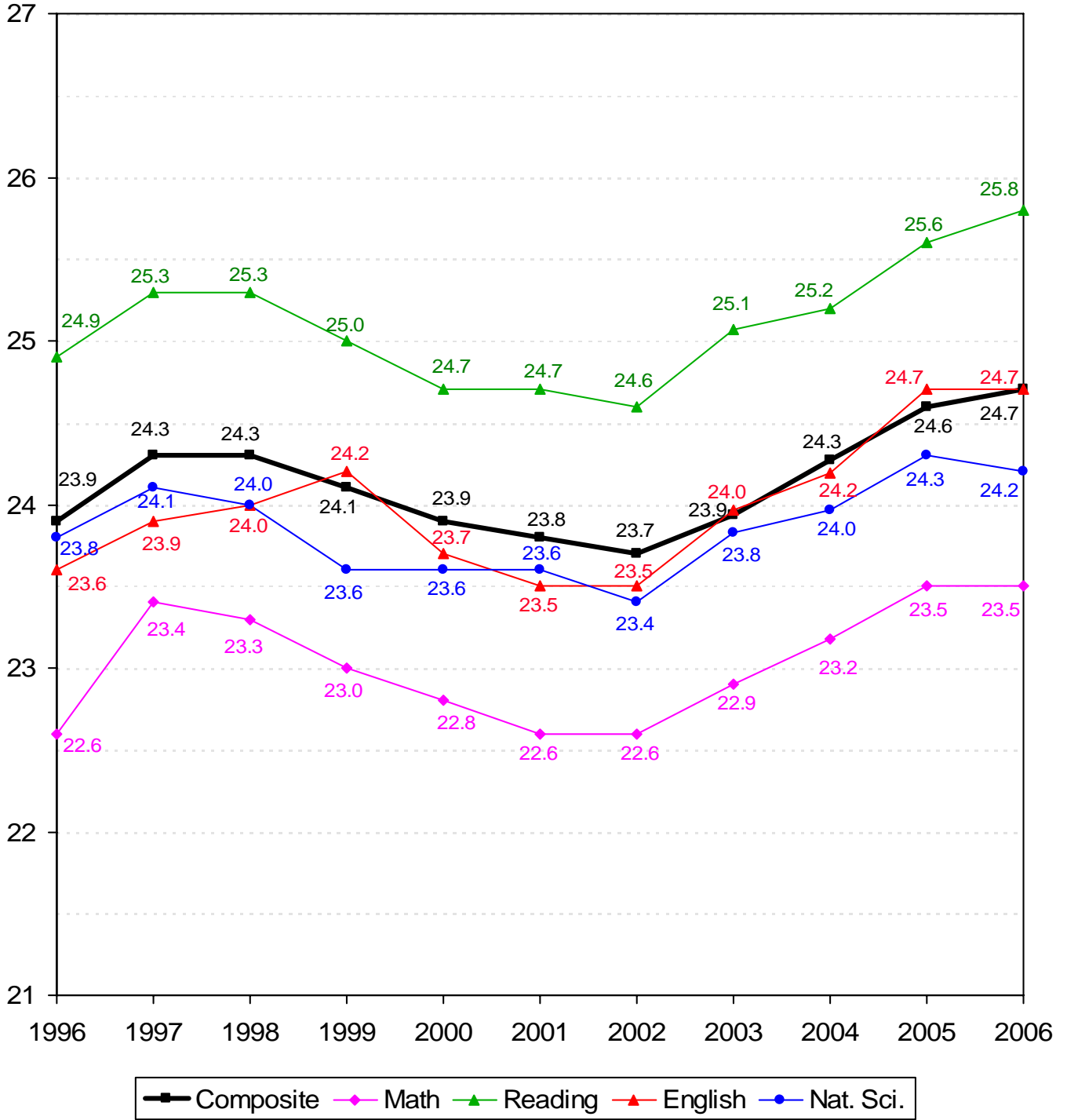


ACADEMIC INFORMATION

TEN-YEAR COMPARISON OF ACT SCORES FOR NEW FRESHMEN
OKLAHOMA STATE UNIVERSITY
FALL SEMESTERS 1996 THROUGH 2006



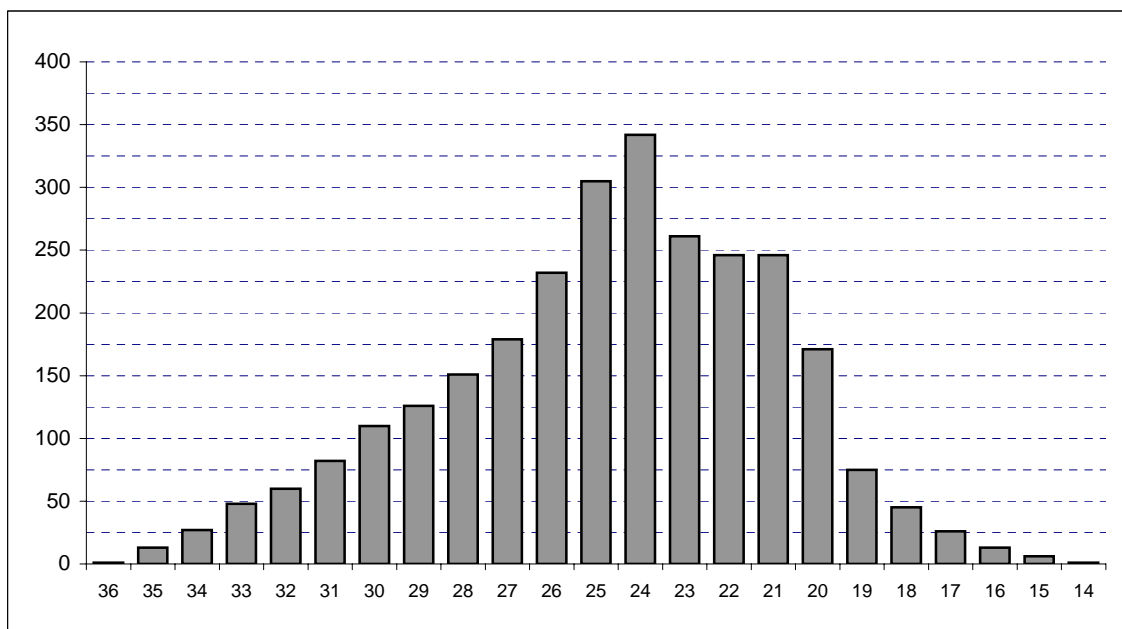
Note: Averages reflect the highest value for each subscore that a student received. Beginning in 2003, ACT composite scores are the average of the highest of each subscore received.

**COMPOSITE ACT AND SAT AVERAGES OF NEW FRESHMEN BY COLLEGE
OKLAHOMA STATE UNIVERSITY
FALL SEMESTER 2006**

College	ACT		SAT	
	Count	Composite	Count	Composite
Ag. Sciences & Natural Res.	285	24.9	31	1,194
Arts & Sciences	860	25.0	108	1,167
Spears School of Business	415	24.7	88	1,145
Education	190	24.1	30	1,156
Engineering & Architecture	379	27.2	79	1,213
Div. of Technology	88	24.6	11	1,106
Human Environmental Sci.	266	23.8	26	1,103
Overall College Average	2,483	25.1	373	1,167
University Academic Services	283	21.4	76	973
Overall Average	2,766	24.7	449	1,134

Note: Composite scores in this table are calculated using the highest subscores obtained for each student. If students have taken both the ACT and the SAT, only the higher score is reported.

**DISTRIBUTION OF NEW FRESHMEN BY COMPOSITE ACT SCORE
OKLAHOMA STATE UNIVERSITY
FALL SEMESTER 2006**



Composite ACT Score	Female	Male	Total	Percent	Cumulative Percent
36	0	1	1	0.04%	0.04%
35	4	9	13	0.47%	0.51%
34	6	21	27	0.98%	1.48%
33	20	28	48	1.74%	3.22%
32	27	33	60	2.17%	5.39%
31	42	40	82	2.96%	8.35%
30	49	61	110	3.98%	12.33%
29	66	60	126	4.56%	16.88%
28	77	74	151	5.46%	22.34%
27	109	70	179	6.47%	28.81%
26	129	103	232	8.39%	37.20%
25	160	145	305	11.03%	48.23%
24	181	161	342	12.36%	60.59%
23	139	122	261	9.44%	70.03%
22	140	106	246	8.89%	78.92%
21	156	90	246	8.89%	87.82%
20	103	68	171	6.18%	94.00%
19	42	33	75	2.71%	96.71%
18	27	18	45	1.63%	98.34%
17	19	7	26	0.94%	99.28%
16	11	2	13	0.47%	99.75%
15	4	2	6	0.22%	99.96%
14	1	0	1	0.04%	100.0%
Total	1,512	1,254	2,766	100.0%	100.0%

Note: ACT scores are only included in this table if they represent the highest test score available for the student. If the student's SAT score (converted to an ACT equivalent) is higher, then the ACT score is not included here.

**ACT AND SAT AVERAGES OF NEW FRESHMEN BY ETHNICITY AND GENDER
OKLAHOMA STATE UNIVERSITY
FALL SEMESTER 2006**

Ethnicity	ACT		SAT	
	Count	Composite	Count	Composite
White	2,296	24.9	350	1,158
African American	107	21.7	34	941
Native American	266	23.8	19	1,156
Hispanic	56	24.7	17	1,131
Asian	39	26.0	8	1,165
Gender				
Female	1,512	24.4	200	1,125
Male	1,254	25.1	249	1,141
Total	2,766	24.7	449	1,134

Note: Composite scores in this table are calculated using the highest subscores obtained for each student. If students have taken both the ACT and the SAT, only the higher score is reported.

**OKLAHOMA HIGH SCHOOL ACT PARTICIPATION STATISTICS
OKLAHOMA STATE UNIVERSITY
2001 THROUGH 2006**

	2001		2002		2003		2004		2005		2006	
High School Graduates in Oklahoma ¹	38,344		37,699		37,688		38,109		37,446		37,145	
Number of Oklahoma H.S. Students Taking ACT ^{2*}	27,910		26,717		27,009		26,556		26,297		26,425	
Total ACT Scores Received by OSU ^{2**}	10,282		9,579		9,758		9,468		9,506		9,256	
1st Choice / % of Scores Received	3,630	35.3%	3,357	35.0%	3,412	35.0%	3,290	34.7%	3,405	35.8%	3,281	35.4%
2nd - 6th Choices / % of Scores Received	6,652	64.7%	6,222	65.0%	6,346	65.0%	6,178	65.3%	6,101	64.2%	5,975	64.6%
Applications Received by OSU	5,730		5,725		6,629		6,633		6,533		6,730	
New Freshmen Accepted by OSU	5,214		5,253		5,930		5,881		5,719		5,853	
% of Applications Received	91.0%		91.8%		89.5%		88.7%		87.5%		87.0%	
New Freshmen Enrolled at OSU	3,209		3,303		3,488		3,264		3,315		3,236	
% of Freshmen Accepted	61.5%		62.9%		58.8%		55.5%		58.0%		55.3%	

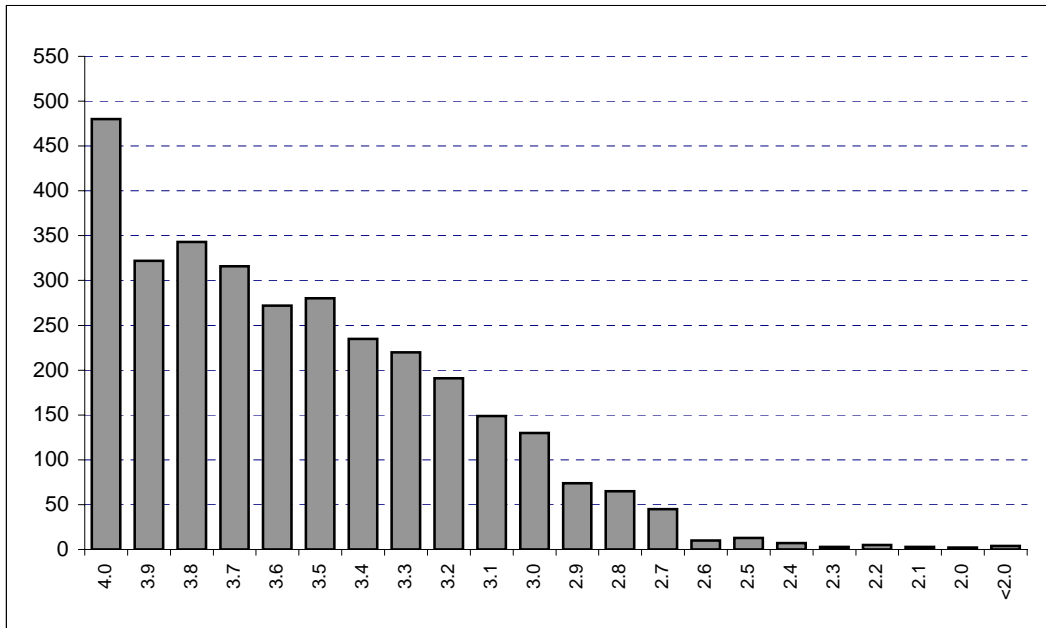
¹Source - 2004-2005 Student Data Report, Oklahoma State Regents for Higher Education (Projections for 2006)

²Source - ACT High School Profile Report, State Composite for Oklahoma - HS Graduating Class of 2006.

*This includes only Oklahoma high school graduates who took the ACT prior to graduation in the year indicated.

**Includes only those students eligible for college enrollment in the fall semester of the year indicated. Does not include multiple ACT scores for any one student. Student Profiles prior to Fall 2003 may include multiple ACT scores per person.

**DISTRIBUTION OF FRESHMEN GRADE POINT AVERAGES
OKLAHOMA STATE UNIVERSITY
FALL SEMESTER 2006**

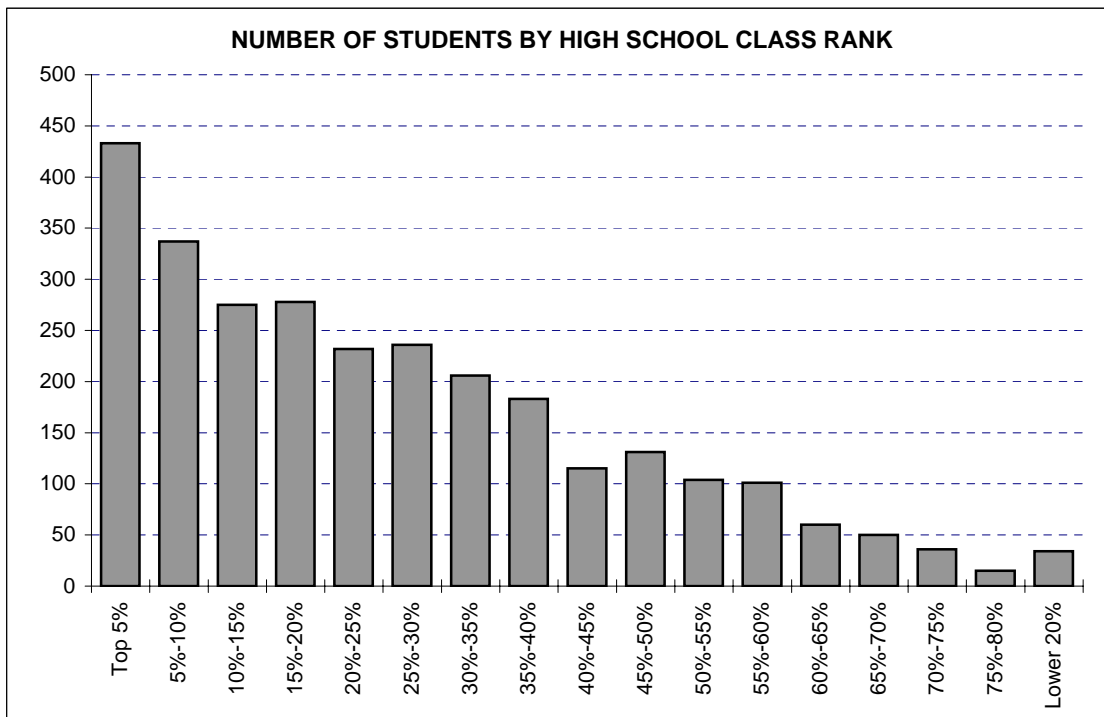


GPA	Number	Cumulative Number	Percent	Cumulative Percent
4.0	480	480	15.15%	15.15%
3.9	322	802	10.16%	25.31%
3.8	343	1,145	10.82%	36.13%
3.7	316	1,461	9.97%	46.10%
3.6	272	1,733	8.58%	54.69%
3.5	280	2,013	8.84%	63.52%
3.4	235	2,248	7.42%	70.94%
3.3	220	2,468	6.94%	77.88%
3.2	191	2,659	6.03%	83.91%
3.1	149	2,808	4.70%	88.61%
3.0	130	2,938	4.10%	92.71%
2.9	74	3,012	2.34%	95.05%
2.8	65	3,077	2.05%	97.10%
2.7	45	3,122	1.42%	98.52%
2.6	10	3,132	0.32%	98.83%
2.5	13	3,145	0.41%	99.24%
2.4	7	3,152	0.22%	99.46%
2.3	3	3,155	0.09%	99.56%
2.2	5	3,160	0.16%	99.72%
2.1	3	3,163	0.09%	99.81%
2.0	2	3,165	0.06%	99.87%
<2.0	4	3,169	0.13%	100.0%
Total	3,169	3,169	100.0%	100.0%

Note: 67 new freshmen (including international, home schooled, and adult admission students) did not supply a high school GPA.

The average high school GPA reported was 3.54. The average high school core GPA calculated was 3.39.

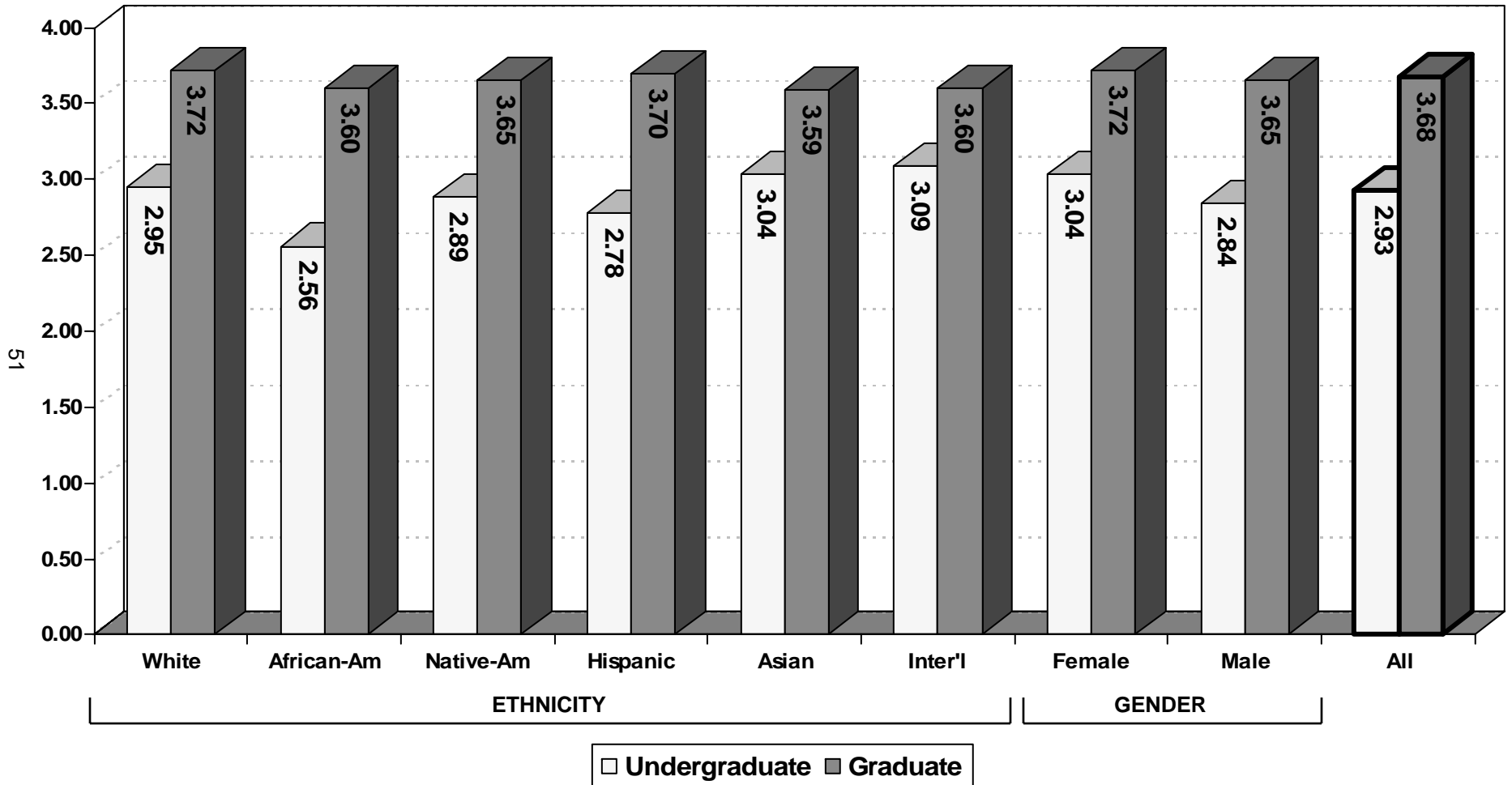
**RANK IN HIGH SCHOOL CLASS BY NUMBER OF NEW FRESHMEN & PERCENT IN EACH RANK
OKLAHOMA STATE UNIVERSITY
FALL SEMESTER 2006**



Rank	Number	Cumulative Number	Percent	Cumulative Percent
Top 5%	433	433	15.32%	15.32%
5%-10%	337	770	11.92%	27.25%
10%-15%	275	1,045	9.73%	36.98%
15%-20%	278	1,323	9.84%	46.82%
20%-25%	232	1,555	8.21%	55.02%
25%-30%	236	1,791	8.35%	63.38%
30%-35%	206	1,997	7.29%	70.67%
35%-40%	183	2,180	6.48%	77.14%
40%-45%	115	2,295	4.07%	81.21%
45%-50%	131	2,426	4.64%	85.85%
50%-55%	104	2,530	3.68%	89.53%
55%-60%	101	2,631	3.57%	93.10%
60%-65%	60	2,691	2.12%	95.22%
65%-70%	50	2,741	1.77%	96.99%
70%-75%	36	2,777	1.27%	98.27%
75%-80%	15	2,792	0.53%	98.80%
Lower 20%	34	2,826	1.20%	100.0%

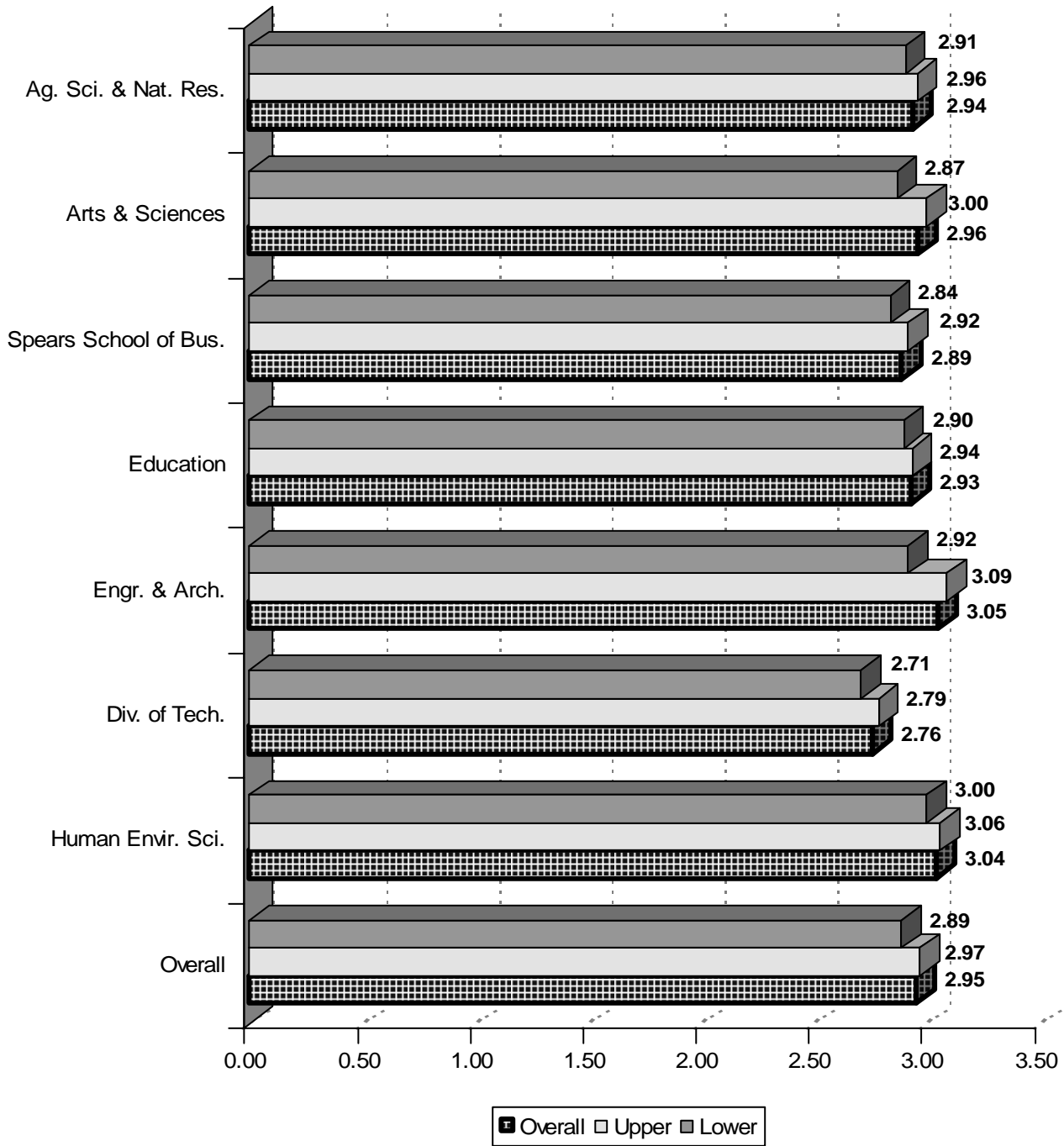
Note: 410 new freshmen (including international, home schooled, and adult admission students) did not supply a high school rank.

AVERAGE CUMULATIVE GRADE POINT AVERAGE BY ETHNICITY AND GENDER
OKLAHOMA STATE UNIVERSITY
FALL 2006



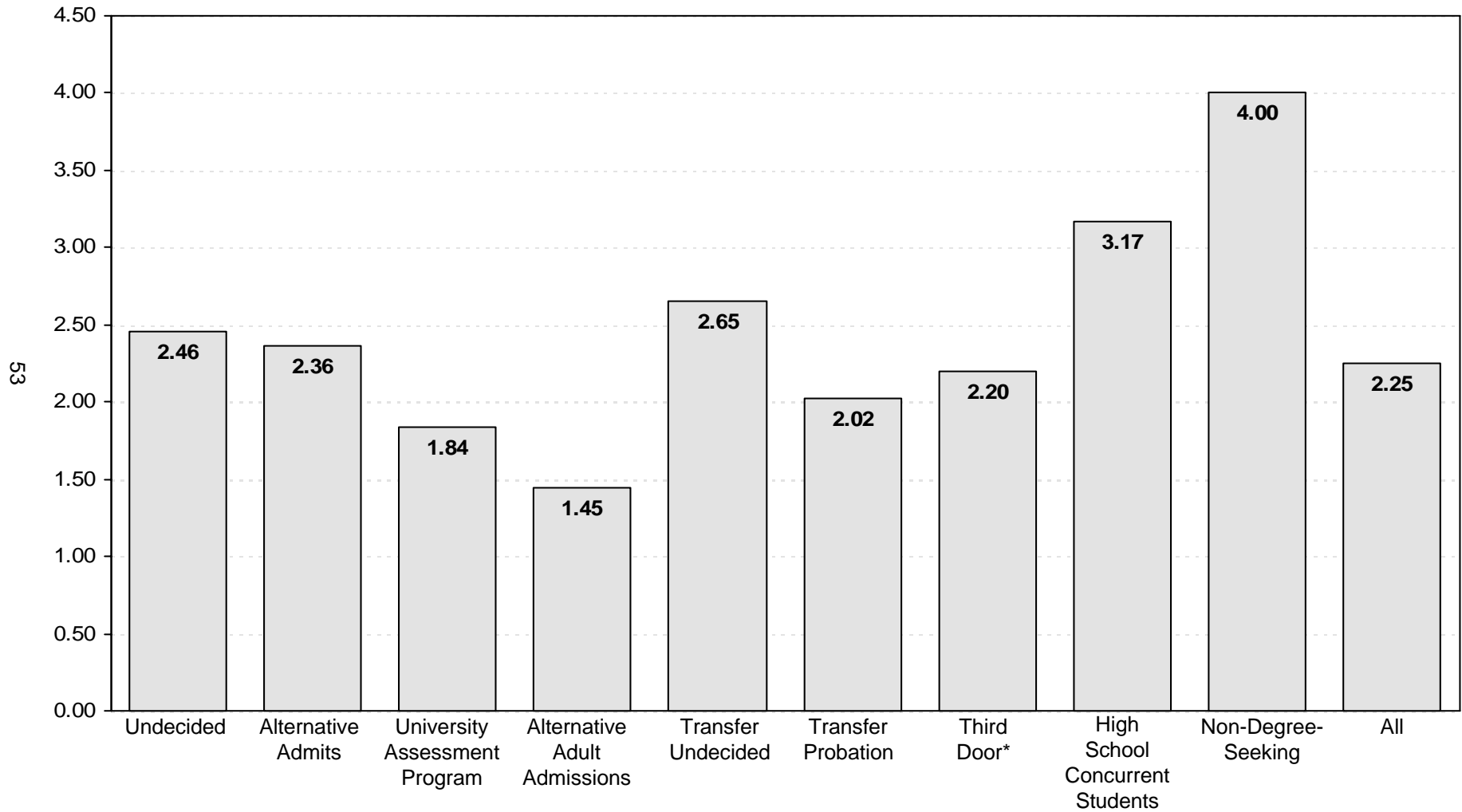
Note: The data presented above includes 13,691 undergraduates and 3,056 graduates for whom a cumulative GPA was reported. This chart excludes professional students, new transfers, and new freshmen, but includes students at OSU-Tulsa.

**AVERAGE CUMULATIVE GRADE POINT AVERAGE
OF UNDERGRADUATE STUDENTS BY COLLEGE AND DIVISION
OKLAHOMA STATE UNIVERSITY
FALL 2006**



Note: This chart includes 13,385 undergraduates enrolled for Fall 2006 for whom a cumulative GPA was reported. This chart excludes professional students, new freshmen, new transfers, and University Academic Services, but includes students enrolled at OSU-Tulsa.

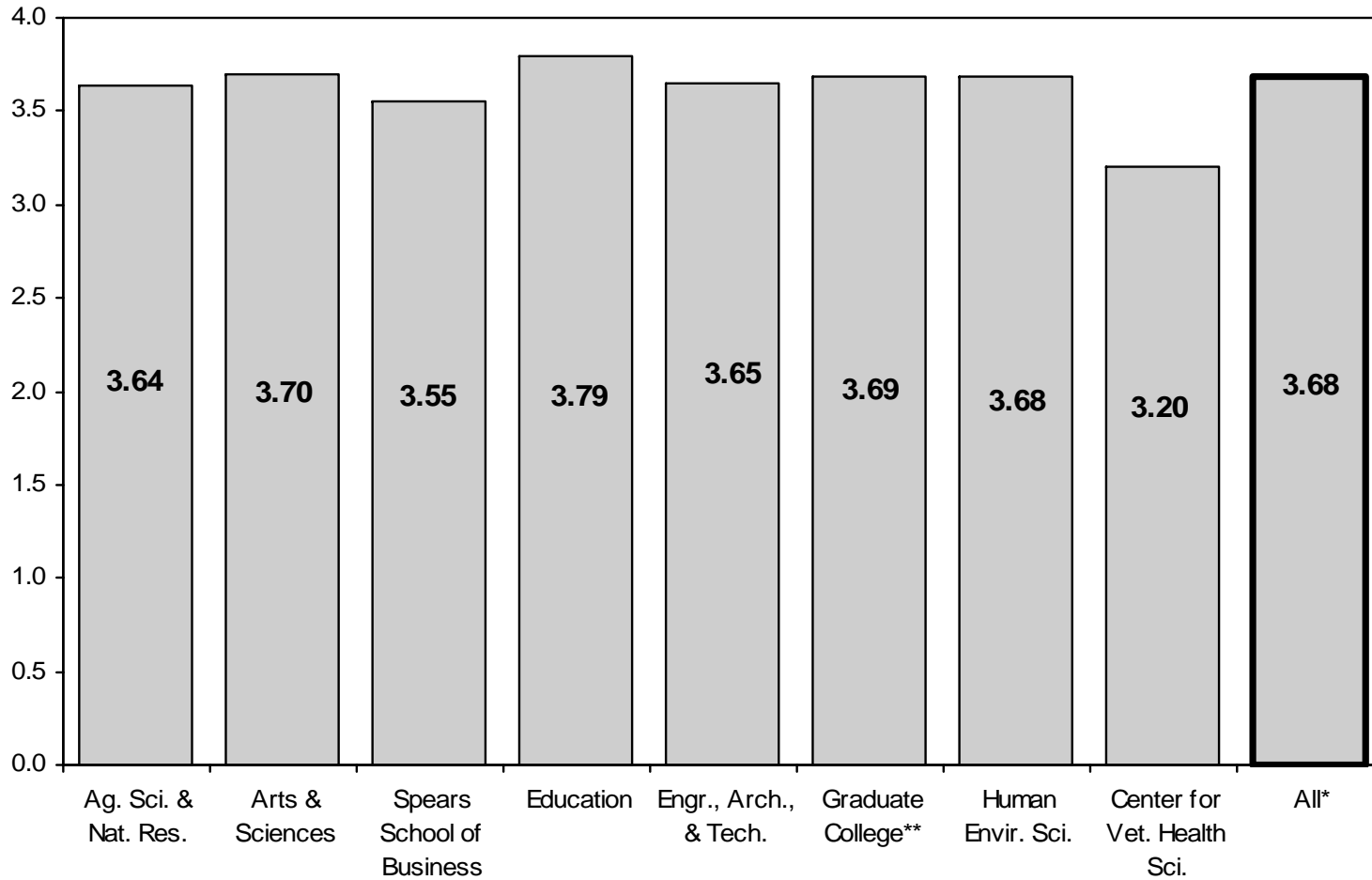
**AVERAGE CUMULATIVE GRADE POINT AVERAGE
OF UNIVERSITY ACADEMIC SERVICES STUDENTS
OKLAHOMA STATE UNIVERSITY
FALL 2006**



*The third door category includes only students admitted by their high school core GPA who are advised by University Academic Services.

Note: This chart includes 306 students enrolled in University Academic Services in the Fall 2006 semester for whom a cumulative GPA was reported.

**AVERAGE CUMULATIVE GRADE POINT AVERAGE
OF GRADUATE STUDENTS BY COLLEGE
OKLAHOMA STATE UNIVERSITY
FALL 2006**

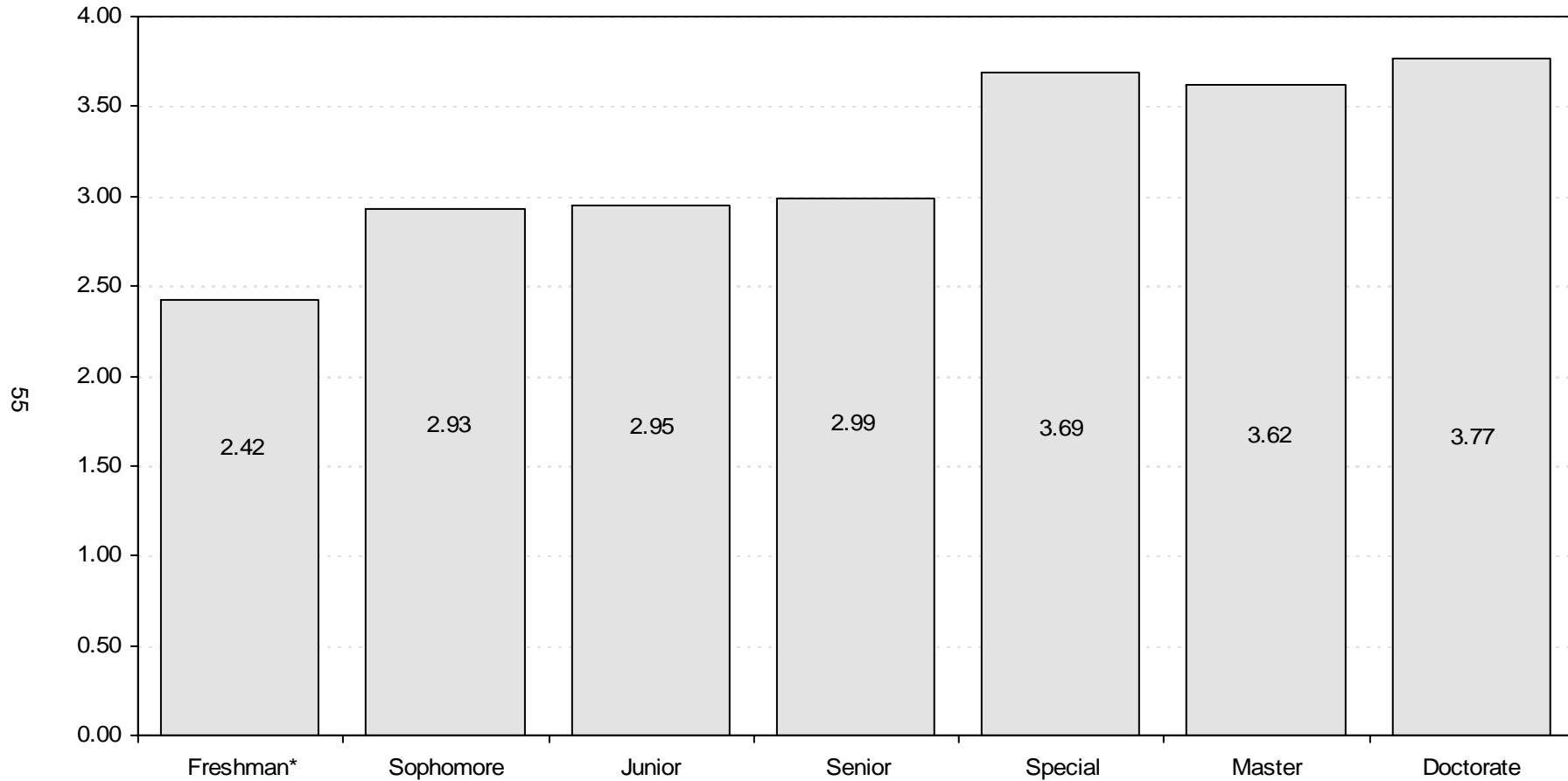


*Center for Veterinary Health Sciences' professional students are excluded from the overall average.

**Interdisciplinary graduate programs that do not have a specific area of specialization are reported in the Graduate College.

Note: This chart includes 3,056 graduate students and 227 professional students enrolled in the Fall 2006 semester for whom a cumulative GPA was reported. This chart does not include new transfer students but does include students enrolled at OSU-Tulsa.

**AVERAGE CUMULATIVE GRADE POINT AVERAGE
OF STUDENTS BY CLASS LEVEL
OKLAHOMA STATE UNIVERSITY
FALL 2006**



*Includes students enrolled previously who have earned fewer than 28 semester credit hours. This does not include Fall 2006 new freshmen.

Note: This chart includes 16,747 students enrolled in the Fall 2006 semester for whom a cumulative GPA was reported. This chart excludes professional students, new freshmen, and new transfer students, but includes students enrolled at OSU-Tulsa.