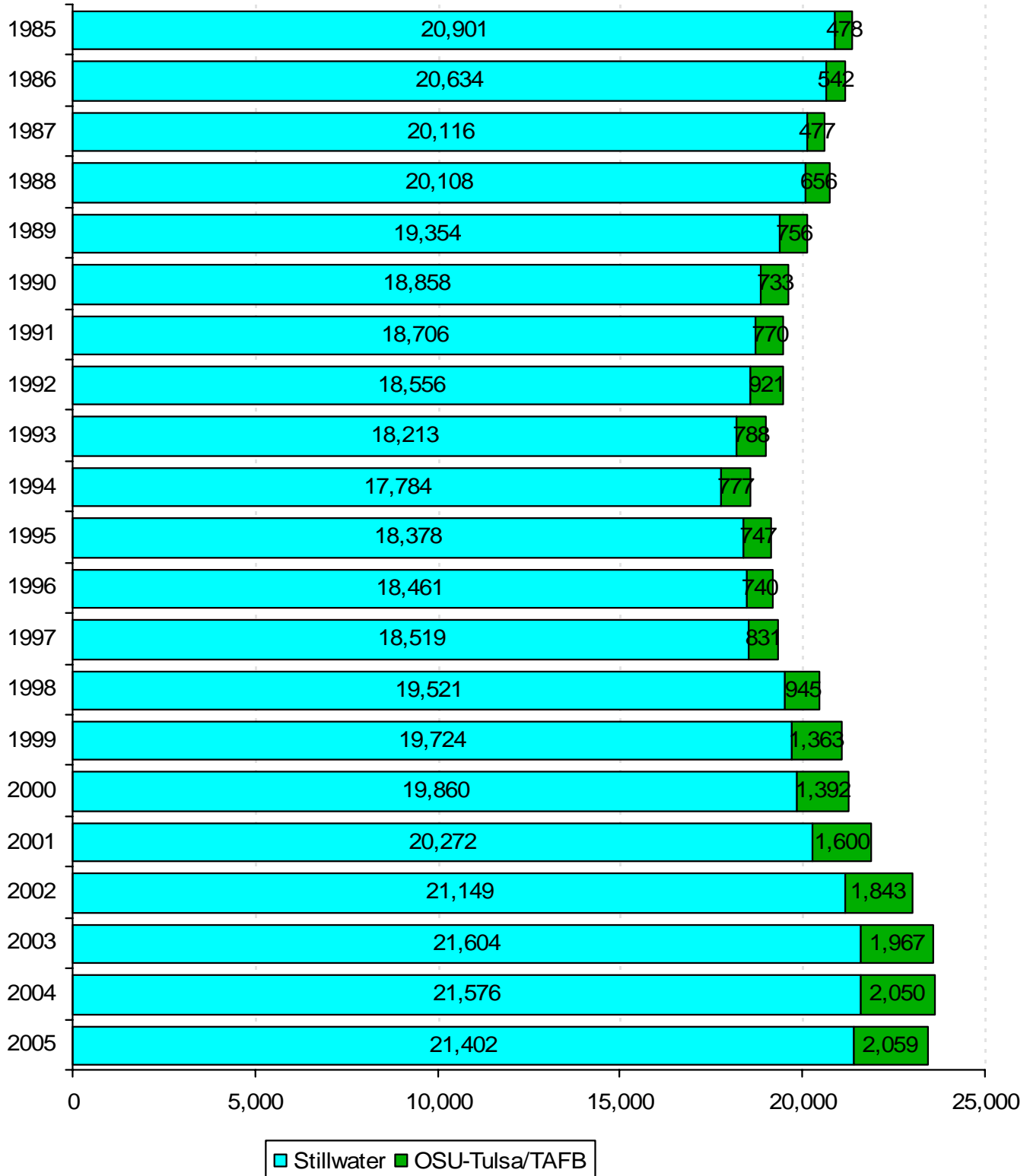


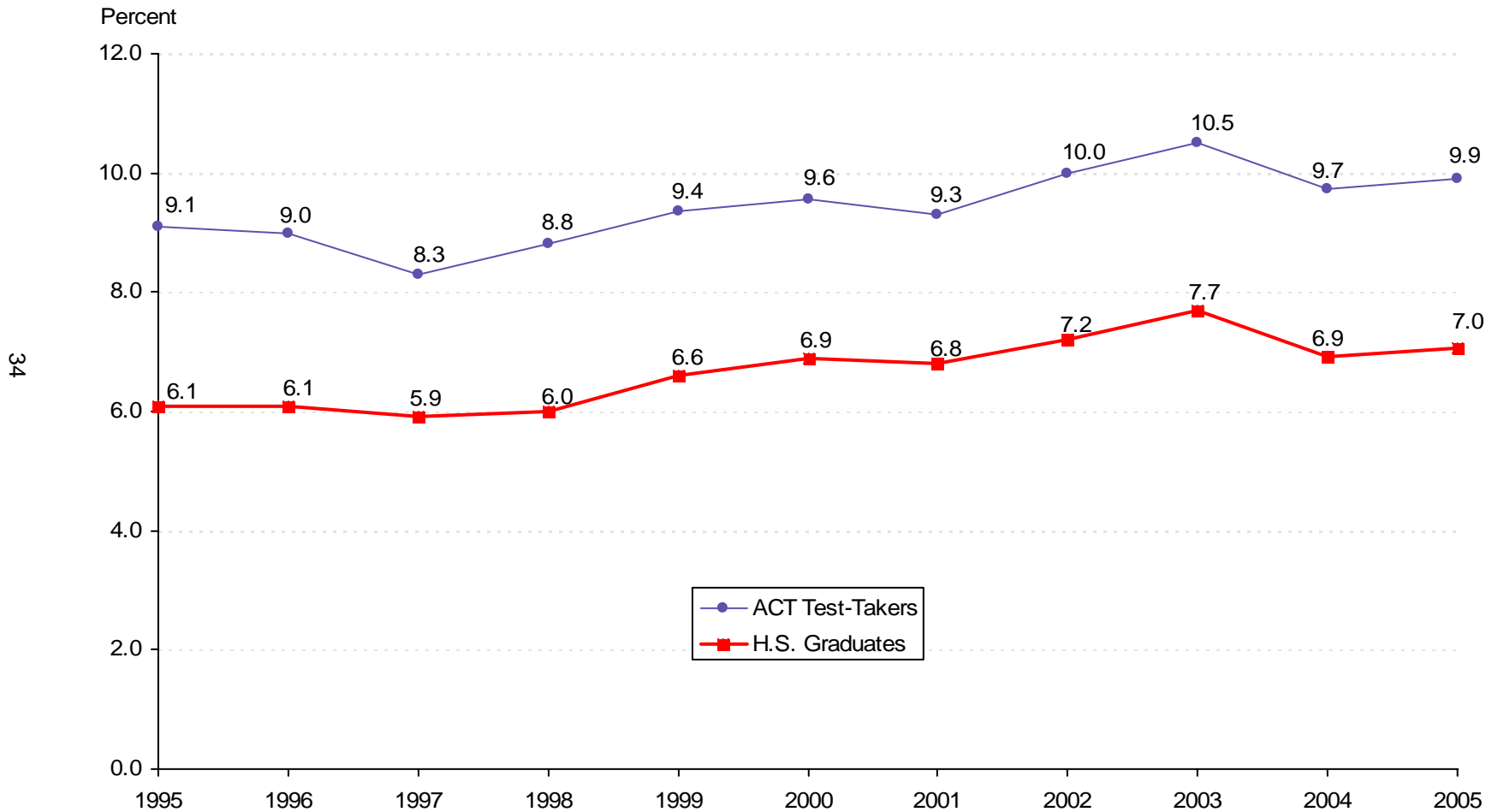
ENROLLMENT TRENDS

This page is left blank intentionally.

STILLWATER AND TULSA CAMPUS ENROLLMENT
OKLAHOMA STATE UNIVERSITY
FALL SEMESTERS 1985 THROUGH 2005



OKLAHOMA STATE UNIVERSITY SHARE OF THE MARKET
RATIO OF BEGINNING RESIDENT FRESHMEN
TO OKLAHOMA HIGH SCHOOL SPRING GRADUATES AND ACT TEST-TAKERS
OKLAHOMA STATE UNIVERSITY
FALL SEMESTERS 1995 THROUGH 2005



Note: Total Oklahoma high school graduates for 2005 = 36,905; total Oklahoma ACT test-takers = 26,297. The beginning resident freshman count for Fall 2005 includes OSU-Tulsa students, excludes non-degree-seeking students and includes 53 first time concurrent resident students. (See Page 43).

Source: Student Data Report, Oklahoma State Regents for Higher Education, and ACT High School Profile Report - State Composite for Oklahoma.

**ENROLLMENT BY TYPE OF ADMISSION
OKLAHOMA STATE UNIVERSITY
FALL SEMESTERS 1995 THROUGH 2005**

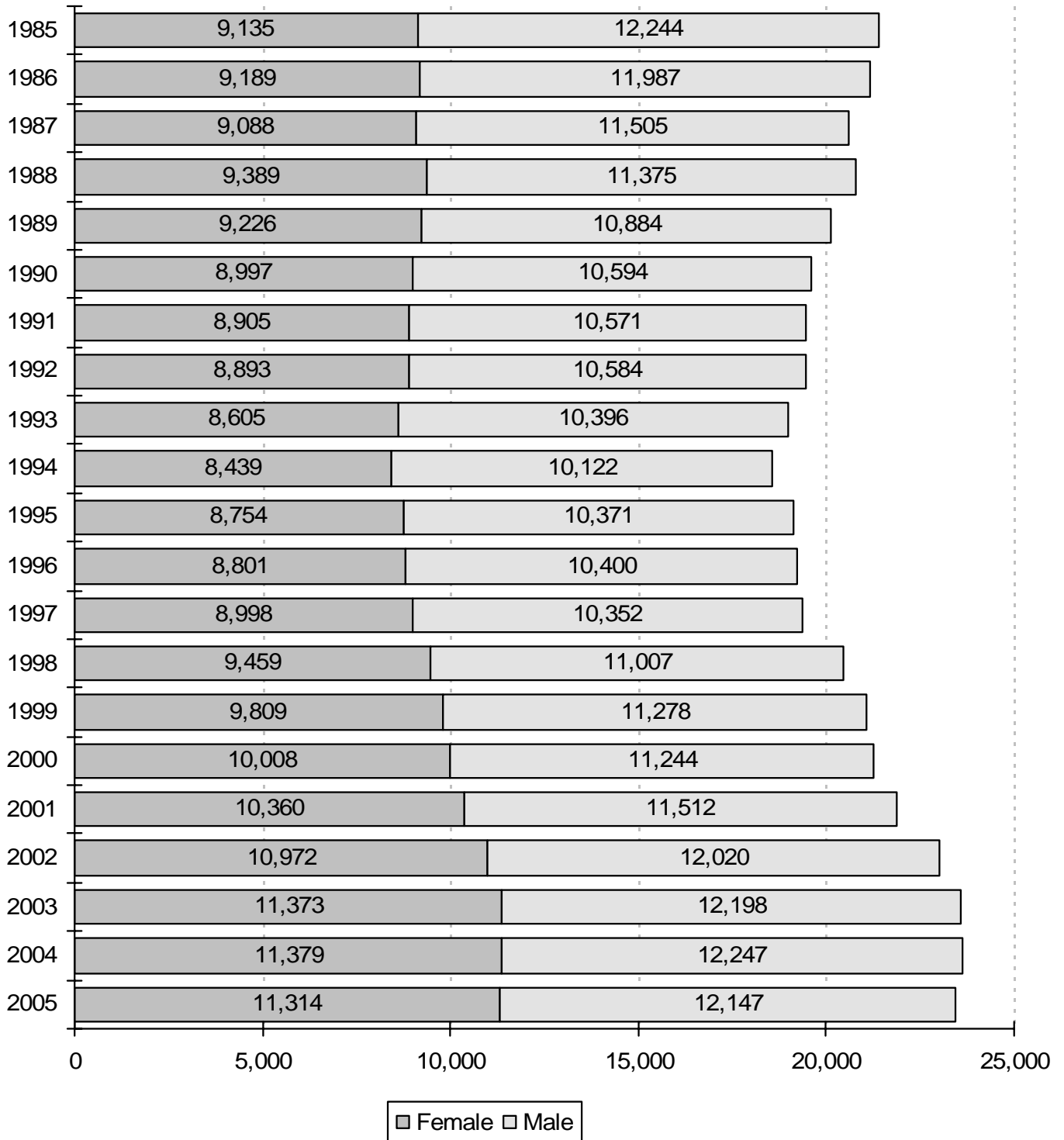
| Fall | New Freshmen | % Inc / Dec | Continuing | % Inc / Dec | Readmission | % Inc / Dec | New Transfer | % Inc / Dec | Non-Degree | % Inc / Dec | Total | % Inc / Dec |
|-------|--------------|-------------|------------|-------------|-------------|-------------|--------------|-------------|------------|-------------|---------------|--------------|
| 1995 | 2,448 | | 13,164 | | 982 | | 2,220 | | 36 | | 18,850 | |
| 1996 | 2,412 | -1.5% | 13,241 | 0.6% | 1,005 | 2.3% | 2,208 | -0.5% | 51 | 41.7% | 18,917 | 0.4% |
| 1997 | 2,331 | -3.4% | 13,307 | 0.5% | 1,082 | 7.7% | 2,271 | 2.9% | 70 | 37.3% | 19,061 | 0.8% |
| 1998 | 2,602 | 11.6% | 13,998 | 5.2% | 933 | -13.8% | 2,536 | 11.7% | 100 | 42.9% | 20,169 | 5.8% |
| 1999 | 2,889 | 11.0% | 15,302 | 9.3% | 126 | -86.5% | 2,398 | -5.4% | 78 | -22.0% | 20,793 | 3.1% |
| 2000 | 3,076 | 6.5% | 14,509 | -5.2% | 971 | 670.6% | 2,272 | -5.3% | 132 | 69.2% | 20,960 | 0.8% |
| 2001 | 3,165 | 2.9% | 14,941 | 3.0% | 961 | -1.0% | 2,363 | 4.0% | 153 | 15.9% | 21,583 | 3.0% |
| 2002 | 3,265 | 3.2% | 15,756 | 5.5% | 1,089 | 13.3% | 2,506 | 6.1% | 84 | -45.1% | 22,700 | 5.2% |
| 2003 | 3,488 | 6.8% | 16,116 | 2.3% | 941 | -13.6% | 2,675 | 6.7% | 54 | -35.7% | 23,274 | 2.5% |
| 2004 | 3,325 | -4.7% | 16,275 | 1.0% | 874 | -7.1% | 2,764 | 3.3% | 92 | 70.4% | 23,330 | 0.2% |
| 2005* | 3,369 | 1.3% | 16,180 | -0.6% | 780 | -10.8% | 2,754 | -0.4% | 82 | -10.9% | 23,165 | -0.7% |

35

Note: This table excludes 296 professional students for Fall 2005. However, this table does include OSU-Tulsa figures for all years listed and will not match the figures for this page in the Student Profile books prior to Fall 2003. The percentage increase or decrease in enrollment between two semesters is shown in the "% Inc / Dec" column. Example: There was a 1.3% increase in enrollment of new freshmen from Fall 2004 to Fall 2005.

* Fall 2005 new freshmen counts include 54 first time concurrent high school students. This total will not match the new freshmen counts found in the other pages of this book. Concurrent students have been included in order to make comparisons with the previous years on this page possible.

ENROLLMENT BY GENDER
OKLAHOMA STATE UNIVERSITY
FALL SEMESTERS 1985 THROUGH 2005



Note: This chart includes professional students and OSU-Tulsa students for all years listed. Hence, these figures will not match the figures in the Student Profiles prior to 2003.

**ENROLLMENT BY CLASSIFICATION
OKLAHOMA STATE UNIVERSITY
FALL SEMESTERS 1985 THROUGH 2005**

| Year | Freshmen | Sophomores | Juniors | Seniors | Special | | Professional | On-Campus Total | Off-Campus OSU-T & TAFB | Grand Total |
|------|----------|------------|---------|---------|------------|-----------|--------------|--------------------|----------------------------|----------------|
| | | | | | Undergrads | Graduates | | | | |
| 1985 | 4,471 | 3,843 | 4,324 | 4,602 | 12 | 3,376 | 273 | 20,901 | 478 | 21,379 |
| 1986 | 4,560 | 3,814 | 4,131 | 4,340 | 10 | 3,507 | 272 | 20,634 | 542 | 21,176 |
| 1987 | 4,185 | 3,629 | 4,009 | 4,332 | 7 | 3,678 | 276 | 20,116 | 477 | 20,593 |
| 1988 | 4,485 | 3,761 | 3,824 | 4,187 | 4 | 3,571 | 276 | 20,108 | 656 | 20,764 |
| 1989 | 4,036 | 3,791 | 3,809 | 4,004 | 1 | 3,454 | 259 | 19,354 | 756 | 20,110 |
| 1990 | 3,526 | 3,787 | 3,693 | 4,037 | 0 | 3,561 | 254 | 18,858 | 733 | 19,591 |
| 1991 | 3,321 | 3,431 | 3,996 | 4,102 | 3 | 3,601 | 252 | 18,706 | 770 | 19,476 |
| 1992 | 3,251 | 3,294 | 3,678 | 4,285 | 20 | 3,759 | 269 | 18,556 | 921 | 19,477 |
| 1993 | 3,161 | 3,200 | 3,727 | 4,195 | 22 | 3,636 | 272 | 18,213 | 788 | 19,001 |
| 1994 | 3,187 | 3,034 | 3,612 | 4,215 | 41 | 3,424 | 271 | 17,784 | 777 | 18,561 |
| 1995 | 3,446 | 3,040 | 3,646 | 4,273 | 34 | 3,664 | 275 | 18,378 | 747 | 19,125 |
| 1996 | 3,427 | 3,226 | 3,508 | 4,311 | 47 | 3,658 | 284 | 18,461 | 740 | 19,201 |
| 1997 | 3,378 | 3,308 | 3,683 | 4,168 | 68 | 3,625 | 289 | 18,519 | 831 | 19,350 |
| 1998 | 3,535 | 3,464 | 3,874 | 4,379 | 70 | 3,902 | 297 | 19,521 | 945 | 20,466 |
| 1999 | 4,068 | 3,543 | 3,923 | 4,235 | 45 | 3,616 | 294 | 19,724 | 1,363 | 21,087 |
| 2000 | 4,148 | 3,765 | 3,834 | 4,339 | 46 | 3,436 | 292 | 19,860 | 1,392 | 21,252 |
| 2001 | 4,361 | 3,886 | 3,925 | 4,234 | 51 | 3,526 | 289 | 20,272 | 1,600 | 21,872 |
| 2002 | 4,473 | 3,944 | 4,115 | 4,458 | 49 | 3,818 | 292 | 21,149 | 1,843 | 22,992 |
| 2003 | 4,649 | 4,083 | 4,197 | 4,548 | 14 | 3,816 | 297 | 21,604 | 1,967 | 23,571 |
| 2004 | 4,462 | 4,056 | 4,266 | 4,604 | 105 | 3,787 | 296 | 21,576 | 2,050 | 23,626 |
| 2005 | 4,325 | 4,035 | 4,391 | 4,736 | 97 | 3,522 | 296 | 21,402 | 2,059 | 23,461 |

Note: Effective 2000, Off-Campus OSU-T & Tinker Air Force Base column reflects OSU-Tulsa enrollment only.

**ENROLLMENT BY ETHNICITY
OKLAHOMA STATE UNIVERSITY
FALL SEMESTERS 1995 THROUGH 2005**

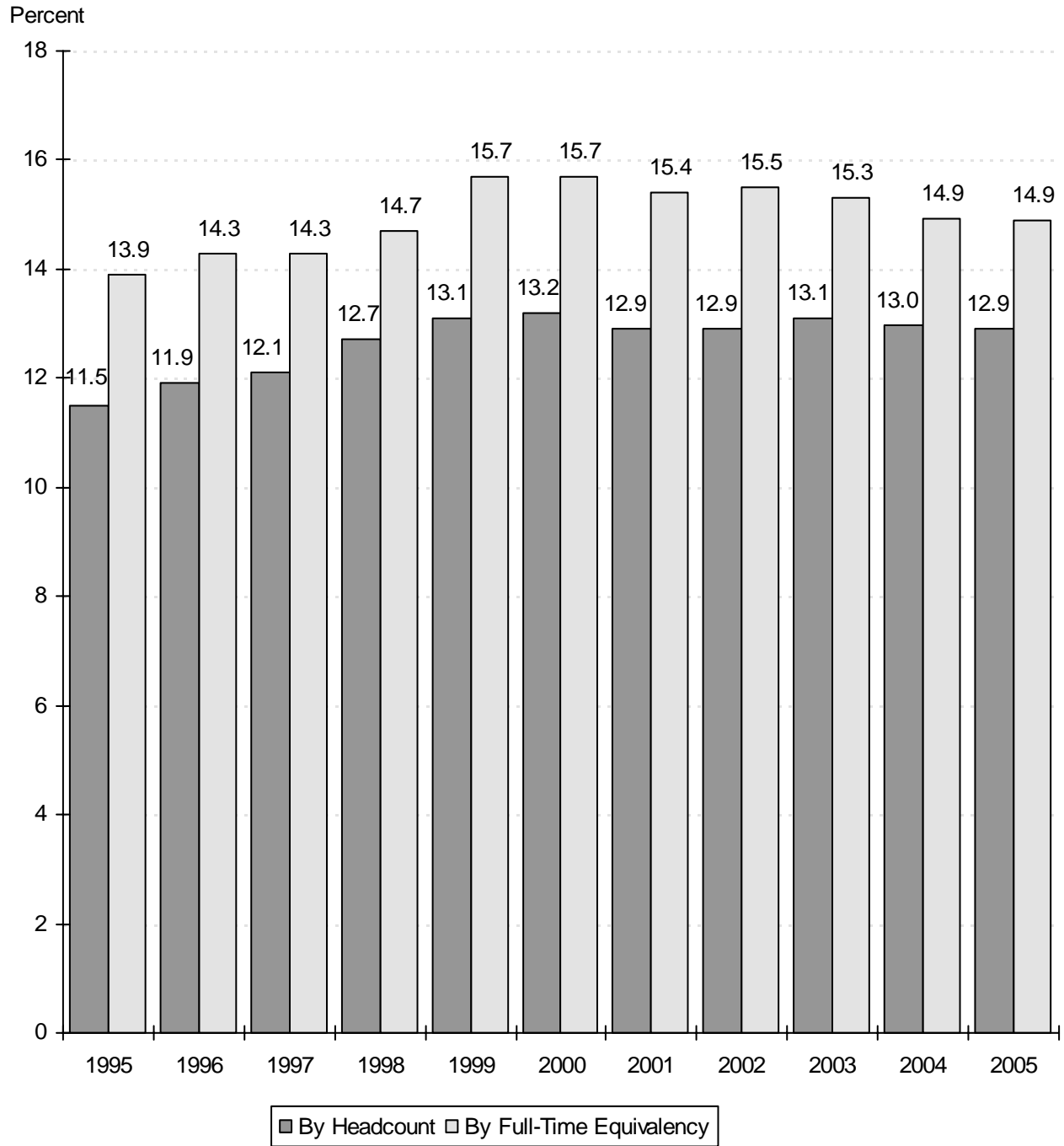
| Fall Semester | White | | African American | | Native American | | Hispanic | | Asian | | International | | Total |
|---------------|--------|-------|------------------|------|-----------------|------|----------|------|--------|------|---------------|-------|---------------|
| | Number | % | Number | % | Number | % | Number | % | Number | % | Number | % | |
| 1995 | 14,951 | 78.2% | 472 | 2.5% | 1,189 | 6.2% | 280 | 1.5% | 368 | 1.9% | 1,865 | 9.8% | 19,125 |
| 1996 | 14,959 | 77.9% | 494 | 2.6% | 1,223 | 6.4% | 299 | 1.6% | 355 | 1.8% | 1,871 | 9.7% | 19,201 |
| 1997 | 14,997 | 77.5% | 537 | 2.8% | 1,213 | 6.3% | 303 | 1.6% | 374 | 1.9% | 1,926 | 10.0% | 19,350 |
| 1998 | 15,856 | 77.5% | 560 | 2.7% | 1,377 | 6.7% | 332 | 1.6% | 363 | 1.8% | 1,978 | 9.7% | 20,466 |
| 1999 | 16,390 | 77.7% | 694 | 3.3% | 1,453 | 6.9% | 384 | 1.8% | 366 | 1.7% | 1,800 | 8.5% | 21,087 |
| 2000 | 16,507 | 77.7% | 709 | 3.3% | 1,555 | 7.3% | 347 | 1.6% | 366 | 1.7% | 1,768 | 8.3% | 21,252 |
| 2001 | 16,753 | 76.6% | 720 | 3.3% | 1,656 | 7.6% | 400 | 1.8% | 379 | 1.7% | 1,964 | 9.0% | 21,872 |
| 2002 | 17,475 | 76.0% | 766 | 3.3% | 1,784 | 7.8% | 415 | 1.8% | 375 | 1.6% | 2,177 | 9.5% | 22,992 |
| 2003 | 17,905 | 76.0% | 778 | 3.3% | 1,838 | 7.8% | 444 | 1.9% | 371 | 1.6% | 2,235 | 9.5% | 23,571 |
| 2004 | 17,943 | 75.9% | 918 | 3.9% | 1,896 | 8.0% | 447 | 1.9% | 389 | 1.6% | 2,033 | 8.6% | 23,626 |
| 2005 | 17,894 | 76.3% | 917 | 3.9% | 1,973 | 8.4% | 523 | 2.2% | 388 | 1.7% | 1,766 | 7.5% | 23,461 |

Note: This table includes professional students and OSU-Tulsa students for all years listed. Student Profile books prior to Fall 2003 do not contain OSU-Tulsa students on this page.

**OSU ENROLLMENT AS A PERCENT OF TOTAL ENROLLMENT
IN THE OKLAHOMA STATE SYSTEMS (PUBLIC)**

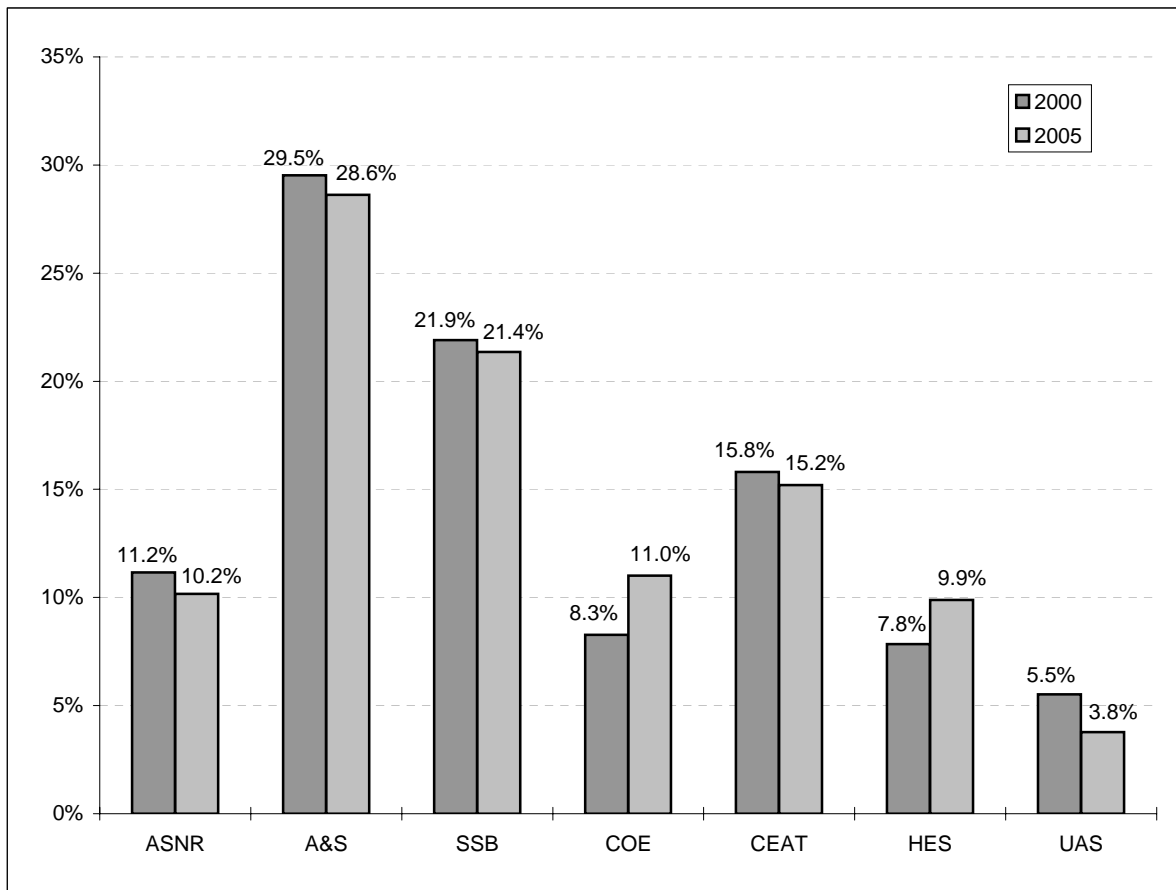
OKLAHOMA STATE UNIVERSITY

FALL SEMESTERS 1995 THROUGH 2005



Source: Preliminary Enrollment Report for Oklahoma Higher Education Fall 2005,
Oklahoma State Regents for Higher Education.

**COMPARISON OF DISTRIBUTION OF UNDERGRADUATE MAJORS BY COLLEGE
OKLAHOMA STATE UNIVERSITY
FALL SEMESTERS 2000 AND 2005**



**UNDERGRADUATE MAJORS BY COLLEGE
OKLAHOMA STATE UNIVERSITY
FALL SEMESTERS 2000 THROUGH 2005**

| Year | Ag. Sci. & Nat. Res. | Arts & Sciences | Spears Sch. of Bus. | Education | Engr., Arch., & Tech. | Human Envir. Sci. | Univ. Acad. Services | Total |
|------|----------------------|-----------------|---------------------|-----------|-----------------------|-------------------|----------------------|---------------|
| 2000 | 1,858 | 4,918 | 3,648 | 1,378 | 2,632 | 1,306 | 919 | 16,659 |
| 2001 | 1,883 | 5,039 | 3,772 | 1,498 | 2,723 | 1,354 | 942 | 17,211 |
| 2002 | 1,942 | 5,123 | 3,810 | 1,780 | 2,858 | 1,573 | 957 | 18,043 |
| 2003 | 1,941 | 5,332 | 4,043 | 1,836 | 2,885 | 1,723 | 923 | 18,683 |
| 2004 | 1,945 | 5,484 | 4,016 | 1,982 | 2,838 | 1,826 | 698 | 18,789 |
| 2005 | 1,922 | 5,412 | 4,038 | 2,081 | 2,874 | 1,868 | 714 | 18,909 |

Note: Students are reported in the college in which they are enrolled. This page includes students enrolled in OSU-Tulsa. Student Profile books prior to Fall 2003 do not contain OSU-Tulsa students on this page.

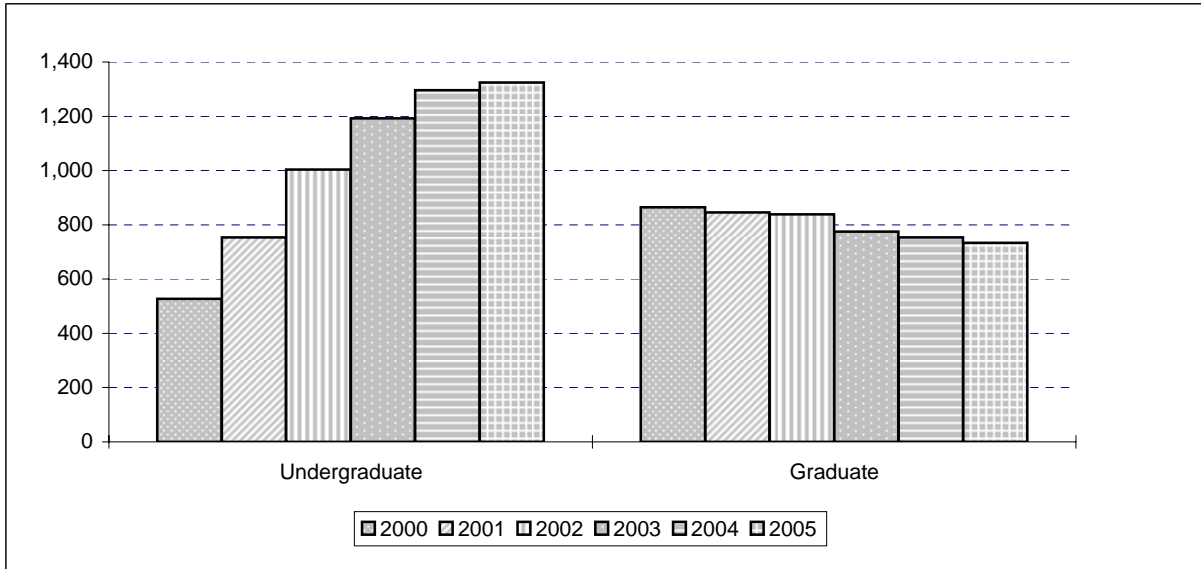
**ENROLLMENT CHANGES
OKLAHOMA STATE UNIVERSITY
FALL SEMESTERS 2000 AND 2005**

| | 2000 | 2005 | % Change |
|---|---------------|---------------|--------------|
| <u>UNDERGRADUATE MAJORS</u> | | | |
| Agricultural Sciences & Natural Resources | 1,858 | 1,922 | 3.4% |
| Arts & Sciences | 4,918 | 5,412 | 10.0% |
| Spears School of Business | 3,648 | 4,038 | 10.7% |
| Education | 1,378 | 2,081 | 51.0% |
| Engineering, Architecture, & Technology | 2,632 | 2,874 | 9.2% |
| Human Environmental Sciences | 1,306 | 1,868 | 43.0% |
| University Academic Services | 919 | 714 | -22.3% |
| <u>AGE</u> | | | |
| 18 & Under | 1,646 | 1,737 | 5.5% |
| 19 | 2,858 | 3,077 | 7.7% |
| 20 | 2,767 | 3,199 | 15.6% |
| 21 | 2,955 | 3,373 | 14.1% |
| 22 | 2,508 | 2,992 | 19.3% |
| 23-29 | 5,385 | 5,871 | 9.0% |
| 30-39 | 1,823 | 1,903 | 4.4% |
| 40 & Over | 1,310 | 1,309 | -0.1% |
| Unknown | 0 | 0 | |
| <u>CLASSIFICATION</u> | | | |
| New Freshmen* | 3,076 | 3,304 | 7.4% |
| Other Freshmen | 1,088 | 1,034 | -5.0% |
| Sophomores | 3,810 | 4,138 | 8.6% |
| Juniors | 4,012 | 4,882 | 21.7% |
| Seniors | 4,543 | 5,417 | 19.2% |
| Specials | 720 | 587 | -18.5% |
| Graduates | 3,711 | 3,803 | 2.5% |
| Professional | 292 | 296 | 1.4% |
| <u>RESIDENT STATUS</u> | | | |
| In-State | 16,895 | 18,127 | 7.3% |
| Out-of-State | 2,589 | 3,568 | 37.8% |
| International | 1,768 | 1,766 | -0.1% |
| <u>ETHNICITY</u> | | | |
| White | 16,507 | 17,894 | 8.4% |
| African American | 709 | 917 | 29.3% |
| Native American | 1,555 | 1,973 | 26.9% |
| Hispanic | 347 | 523 | 50.7% |
| Asian | 366 | 388 | 6.0% |
| International | 1,768 | 1,766 | -0.1% |
| <u>GENDER</u> | | | |
| Female | 10,008 | 11,314 | 13.0% |
| Male | 11,244 | 12,147 | 8.0% |
| OVERALL ENROLLMENT | 21,252 | 23,461 | 10.4% |

Note: This table includes professional students and OSU-Tulsa students. Student Profile books prior to Fall 2003 do not contain OSU-Tulsa students on this page.

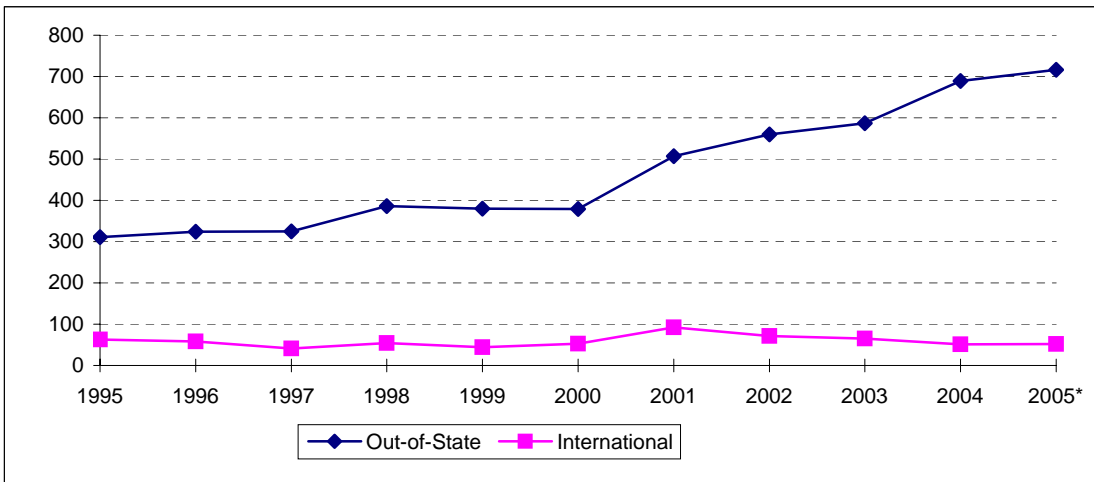
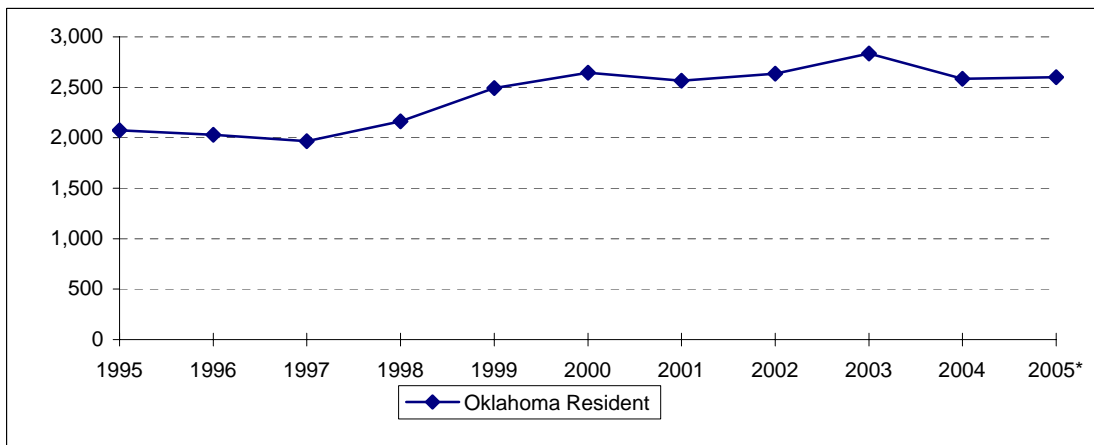
* 13 students classified in this table as sophomores for 2005 are in their first year of college and thus listed in other tables as new freshmen. 2 students classified as new freshmen are first time concurrent students.

**ENROLLMENT CHANGES
OKLAHOMA STATE UNIVERSITY AT TULSA
FALL SEMESTERS 2000 THROUGH 2005**



| Classification | 2000 | 2001 | 2002 | 2003 | 2004 | 2005 | % Change 2004 to 2005 |
|--------------------|--------------|--------------|--------------|--------------|--------------|--------------|--------------------------|
| Undergraduate | 527 | 754 | 1,004 | 1,192 | 1,296 | 1,325 | 2.2% |
| Freshman | 16 | 21 | 34 | 46 | 25 | 13 | -48.0% |
| Sophomore | 45 | 87 | 88 | 112 | 115 | 103 | -10.4% |
| Junior | 178 | 247 | 389 | 440 | 501 | 491 | -2.0% |
| Senior | 204 | 297 | 458 | 554 | 607 | 681 | 12.2% |
| Special | 84 | 102 | 35 | 40 | 48 | 37 | -22.9% |
| Graduate | 865 | 846 | 839 | 775 | 754 | 734 | -2.7% |
| Special | 270 | 217 | 203 | 188 | 208 | 199 | -4.3% |
| Master | 504 | 527 | 542 | 507 | 435 | 415 | -4.6% |
| Doctorate | 91 | 102 | 94 | 80 | 111 | 120 | 8.1% |
| Grand Total | 1,392 | 1,600 | 1,843 | 1,967 | 2,050 | 2,059 | 0.4% |

**NEW FRESHMEN ENROLLMENT BY RESIDENCY
OKLAHOMA STATE UNIVERSITY
FALL SEMESTERS 1995 THROUGH 2005**



| Fall Semester | Oklahoma Resident | Out-of-State | International | Total |
|---------------|-------------------|--------------|---------------|-------|
| 1995 | 2,074 | 311 | 63 | 2,448 |
| 1996 | 2,030 | 324 | 58 | 2,412 |
| 1997 | 1,965 | 325 | 41 | 2,331 |
| 1998 | 2,162 | 386 | 54 | 2,602 |
| 1999 | 2,492 | 380 | 44 | 2,916 |
| 2000 | 2,644 | 379 | 53 | 3,076 |
| 2001 | 2,566 | 507 | 92 | 3,165 |
| 2002 | 2,634 | 560 | 71 | 3,265 |
| 2003 | 2,836 | 587 | 65 | 3,488 |
| 2004 | 2,585 | 689 | 51 | 3,325 |
| 2005* | 2,601 | 716 | 52 | 3,369 |

Note: This table includes students at OSU-Tulsa, but does not include non-degree-seeking new freshman. Student Profile books prior to Fall 2003 do not contain OSU-Tulsa students on this page.

* Fall 2005 counts include 53 first time concurrent students who are Oklahoma Residents, and 1 first time concurrent student who is an Out-of-State Resident. The first time concurrent students have been included for Fall 2005 since it is included in the Fall 1995 to Fall 2004 new freshmen counts on this page. The new freshman count on this page will not match the counts found on other pages.

