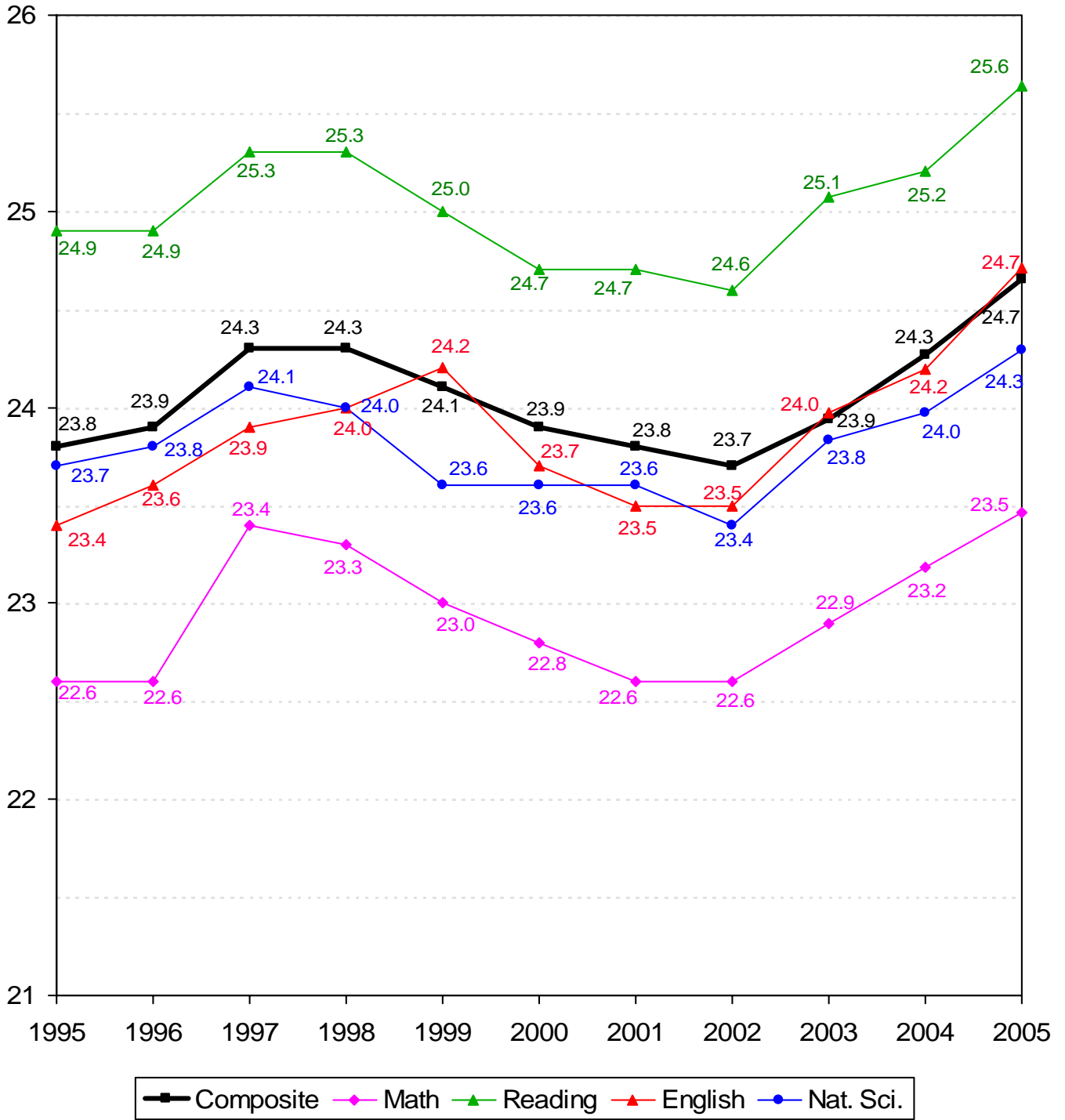


# ACADEMIC INFORMATION

**TEN-YEAR COMPARISON OF ACT SCORES FOR NEW FRESHMEN**  
**OKLAHOMA STATE UNIVERSITY**  
**FALL SEMESTERS 1995 THROUGH 2005**



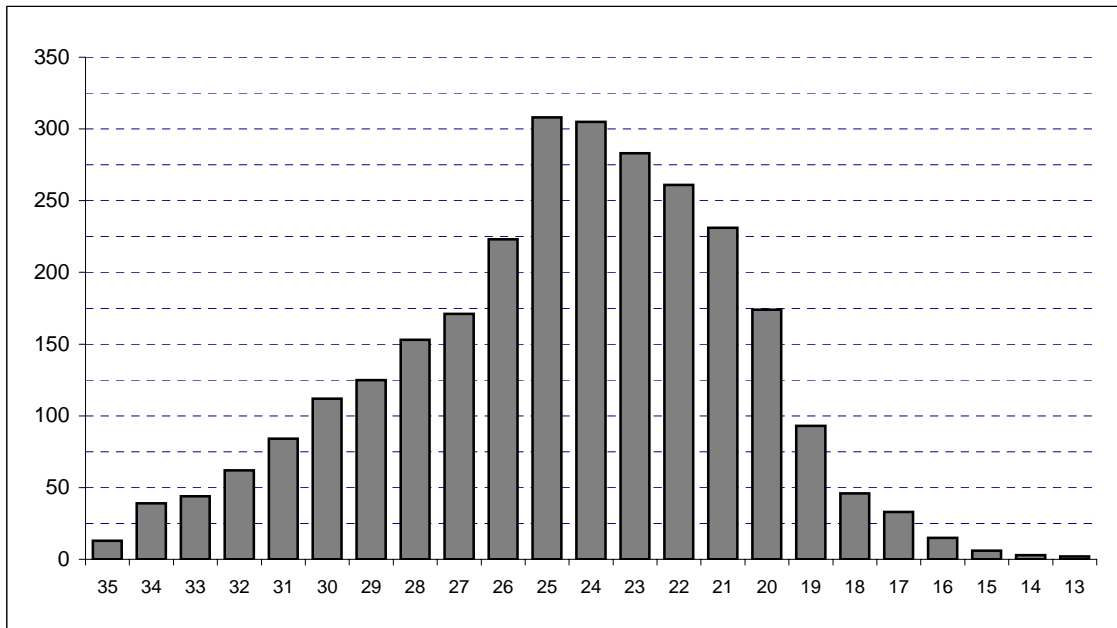
*Note:* Averages reflect the highest value for each subscore that a student received. Beginning in 2003, ACT composite scores are the average of the highest of each subscore received.

**COMPOSITE ACT AND SAT AVERAGES OF NEW FRESHMEN BY COLLEGE  
OKLAHOMA STATE UNIVERSITY  
FALL SEMESTER 2005**

College	ACT		SAT	
	Count	Composite	Count	Composite
Ag. Sciences & Natural Res.	326	24.7	32	1,146
Arts & Sciences	816	25.0	131	1,161
Spears School of Business	409	24.4	128	1,133
Education	207	23.8	52	1,118
Engineering & Architecture	404	27.2	61	1,227
Div. of Technology	115	24.9	25	1,150
Human Environmental Sci.	273	23.8	35	1,133
<b>Overall College Average</b>	<b>2,550</b>	<b>25.0</b>	<b>464</b>	<b>1,154</b>
University Academic Services	236	21.0	36	976
<b>Overall Average</b>	<b>2,786</b>	<b>24.6</b>	<b>500</b>	<b>1,141</b>

Note: Composite scores in this table are calculated using the highest subscores obtained for each student. If students have taken both the ACT and the SAT, only the higher score is reported.

**DISTRIBUTION OF NEW FRESHMEN BY COMPOSITE ACT SCORE  
OKLAHOMA STATE UNIVERSITY  
FALL SEMESTER 2005**



Composite ACT Score	Female	Male	Total	Percent	Cumulative Percent
35	1	12	13	0.47%	0.47%
34	11	28	39	1.40%	1.87%
33	14	30	44	1.58%	3.45%
32	31	31	62	2.23%	5.67%
31	38	46	84	3.02%	8.69%
30	50	62	112	4.02%	12.71%
29	60	65	125	4.49%	17.19%
28	85	68	153	5.49%	22.68%
27	85	86	171	6.14%	28.82%
26	122	101	223	8.00%	36.83%
25	179	129	308	11.06%	47.88%
24	167	138	305	10.95%	58.83%
23	151	132	283	10.16%	68.99%
22	140	121	261	9.37%	78.36%
21	126	105	231	8.29%	86.65%
20	102	72	174	6.25%	92.89%
19	63	30	93	3.34%	96.23%
18	20	26	46	1.65%	97.88%
17	24	9	33	1.18%	99.07%
16	7	8	15	0.54%	99.61%
15	2	4	6	0.22%	99.82%
14	1	2	3	0.11%	99.93%
13	0	2	2	0.07%	100.0%
12	0	0	0	0.00%	100.0%
<b>Total</b>	<b>1,479</b>	<b>1,307</b>	<b>2,786</b>	<b>100.0%</b>	<b>100.0%</b>

Note: ACT scores are only included in this table if they represent the highest test score available for the student. If the student's SAT score (converted to an ACT equivalent) is higher, then the ACT score is not included here.

**ACT AND SAT AVERAGES OF NEW FRESHMEN BY ETHNICITY AND GENDER  
OKLAHOMA STATE UNIVERSITY  
FALL SEMESTER 2005**

Ethnicity	ACT		SAT	
	Count	Composite	Count	Composite
White	2,267	24.9	427	1,151
African American	101	21.2	21	987
Native American	302	24.4	13	1,220
Hispanic	62	23.5	14	1,095
Asian	45	25.6	8	1,178
<b>Gender</b>				
Female	1,479	24.3	222	1,130
Male	1,307	25.0	278	1,150
<b>Total</b>	<b>2,786</b>	<b>24.7</b>	<b>500</b>	<b>1,141</b>

*Note:* Composite scores in this table are calculated using the highest subscores obtained for each student. If students have taken both the ACT and the SAT, only the higher score is reported.

**OKLAHOMA HIGH SCHOOL ACT PARTICIPATION STATISTICS  
OKLAHOMA STATE UNIVERSITY  
2000 THROUGH 2005**

	2000		2001		2002		2003		2004		2005	
High School Graduates in Oklahoma <sup>1</sup>	38,512		38,344		37,699		37,688		38,109		36,905	
Number of Oklahoma H.S. Students Taking ACT <sup>2*</sup>	27,850		27,910		26,717		27,009		26,556		26,297	
Total ACT Scores Received by OSU <sup>2**</sup>	10,741		10,282		9,579		9,758		9,468		9,506	
1st Choice / % of Scores Received	3,870	37.6%	3,630	35.3%	3,357	35.0%	3,412	35.0%	3,290	34.7%	3,405	35.8%
2nd - 6th Choices / % of Scores Received	6,871	66.8%	6,652	64.7%	6,222	65.0%	6,346	65.0%	6,178	65.3%	6,101	64.2%
Applications Received by OSU <sup>3</sup>	5,816		5,730		5,725		6,629		6,633		6,533	
New Freshmen Accepted by OSU <sup>3</sup>	5,322		5,214		5,253		5,930		5,881		5,719	
% of Applications Received	91.5%		91.0%		91.8%		89.5%		88.7%		87.5%	
New Freshmen Enrolled at OSU	3,113		3,209		3,303		3,488		3,264		3,315	
% of Freshmen Accepted	58.5%		61.5%		62.9%		58.8%		55.5%		58.0%	

<sup>1</sup>Source - 2003-2004 Student Data Report, Oklahoma State Regents for Higher Education

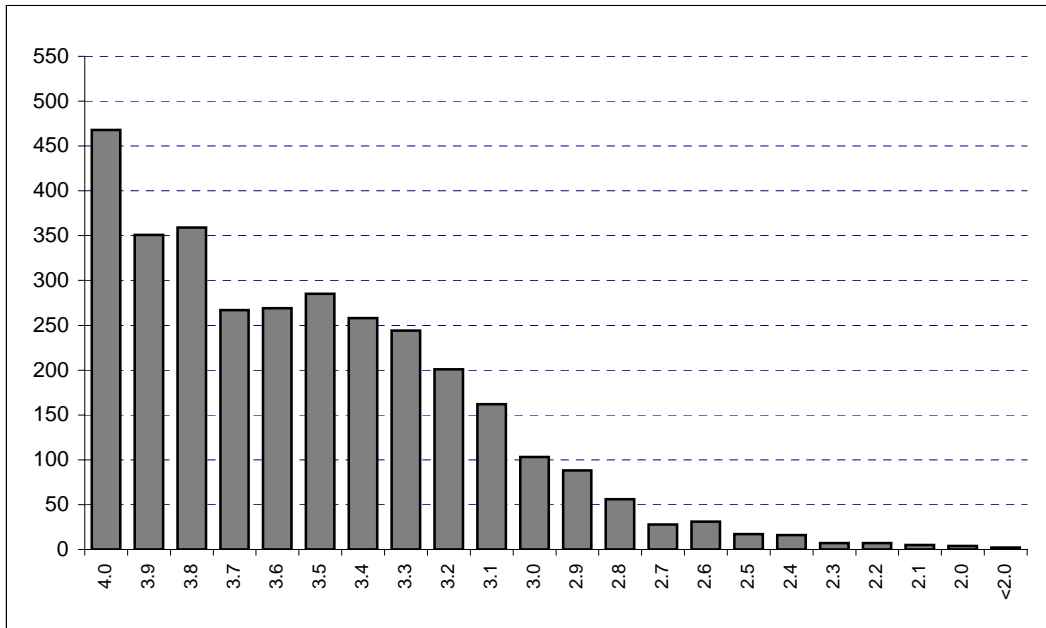
<sup>2</sup>Source - ACT High School Profile Report, State Composite for Oklahoma - HS Graduating Class 2005.

<sup>3</sup>Source - Fall 2005 Undergraduate Admissions Report as of September 09th, 2005

\*This includes only Oklahoma high school graduates who took the ACT prior to graduation in the year indicated.

\*\*Includes only those students eligible for college enrollment in the fall semester of the year indicated. Does not include multiple ACT scores for any one student. Student Profiles prior to Fall 2003 may include multiple ACT scores per person.

**DISTRIBUTION OF FRESHMEN GRADE POINT AVERAGES  
OKLAHOMA STATE UNIVERSITY  
FALL SEMESTER 2005**

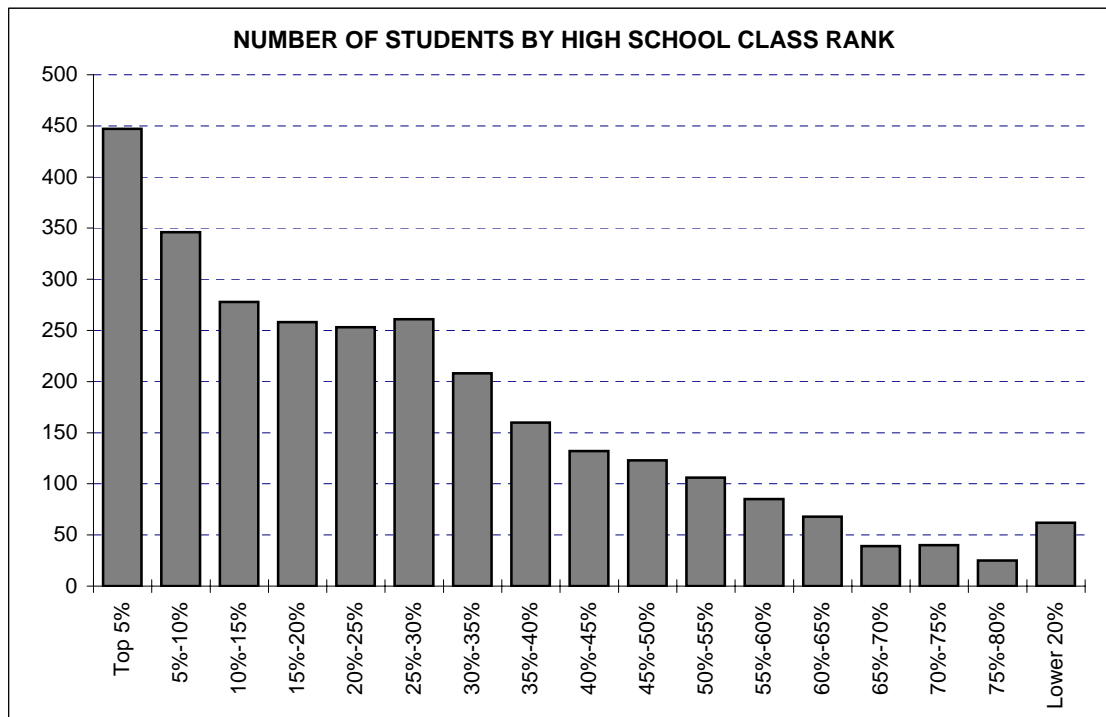


GPA	Number	Cumulative Number	Percent	Cumulative Percent
4.0	468	468	14.50%	14.50%
3.9	351	819	10.87%	25.37%
3.8	359	1,178	11.12%	36.49%
3.7	267	1,445	8.27%	44.76%
3.6	269	1,714	8.33%	53.10%
3.5	285	1,999	8.83%	61.93%
3.4	258	2,257	7.99%	69.92%
3.3	244	2,501	7.56%	77.48%
3.2	201	2,702	6.23%	83.71%
3.1	162	2,864	5.02%	88.72%
3.0	103	2,967	3.19%	91.91%
2.9	88	3,055	2.73%	94.64%
2.8	56	3,111	1.73%	96.38%
2.7	28	3,139	0.87%	97.24%
2.6	31	3,170	0.96%	98.20%
2.5	17	3,187	0.53%	98.73%
2.4	16	3,203	0.50%	99.23%
2.3	7	3,210	0.22%	99.44%
2.2	7	3,217	0.22%	99.66%
2.1	5	3,222	0.15%	99.81%
2.0	4	3,226	0.12%	99.94%
<2.0	2	3,228	0.06%	100.0%
<b>Total</b>	<b>3,228</b>	<b>3,228</b>	<b>100.0%</b>	<b>100.0%</b>

Note: 87 new freshmen (including international, home schooled, and adult admission students) did not supply a high school GPA.

The average high school GPA reported was 3.53. The average high school core GPA calculated was 3.39.

**RANK IN HIGH SCHOOL CLASS BY NUMBER OF NEW FRESHMEN & PERCENT IN EACH RANK  
OKLAHOMA STATE UNIVERSITY  
FALL SEMESTER 2005**

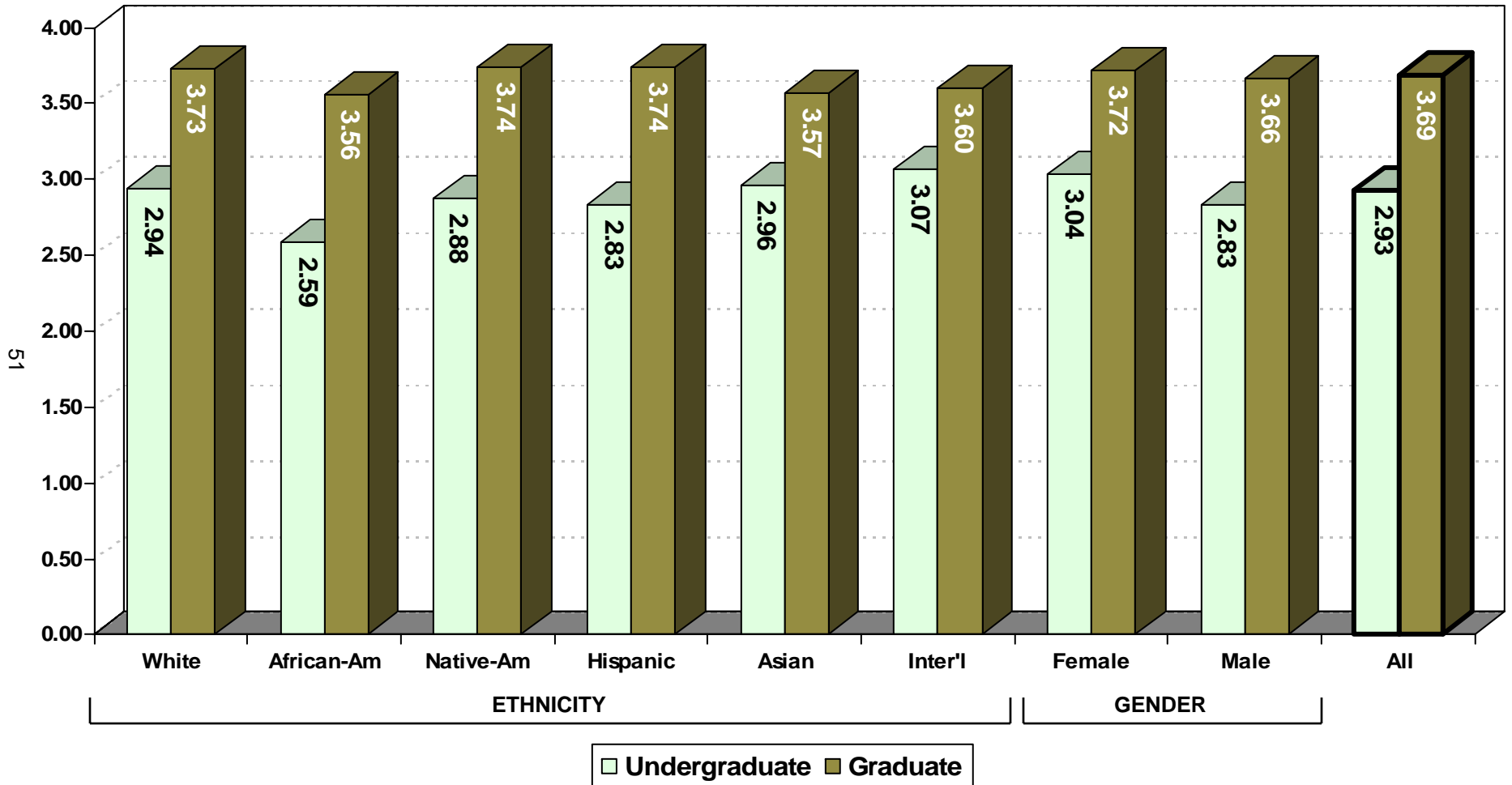


Rank	Number	Cumulative Number	Percent	Cumulative Percent
Top 5%	447	447	15.46%	15.46%
5%-10%	346	793	11.97%	27.43%
10%-15%	278	1,071	9.62%	37.05%
15%-20%	258	1,329	8.92%	45.97%
20%-25%	253	1,582	8.75%	54.72%
25%-30%	261	1,843	9.03%	63.75%
30%-35%	208	2,051	7.19%	70.94%
35%-40%	160	2,211	5.53%	76.48%
40%-45%	132	2,343	4.57%	81.04%
45%-50%	123	2,466	4.25%	85.30%
50%-55%	106	2,572	3.67%	88.97%
55%-60%	85	2,657	2.94%	91.91%
60%-65%	68	2,725	2.35%	94.26%
65%-70%	39	2,764	1.35%	95.61%
70%-75%	40	2,804	1.38%	96.99%
75%-80%	25	2,829	0.86%	97.86%
Lower 20%	62	2,891	2.14%	100.0%

Note: 424 new freshmen (including international, home schooled, and adult admission students) did not supply a high school rank.

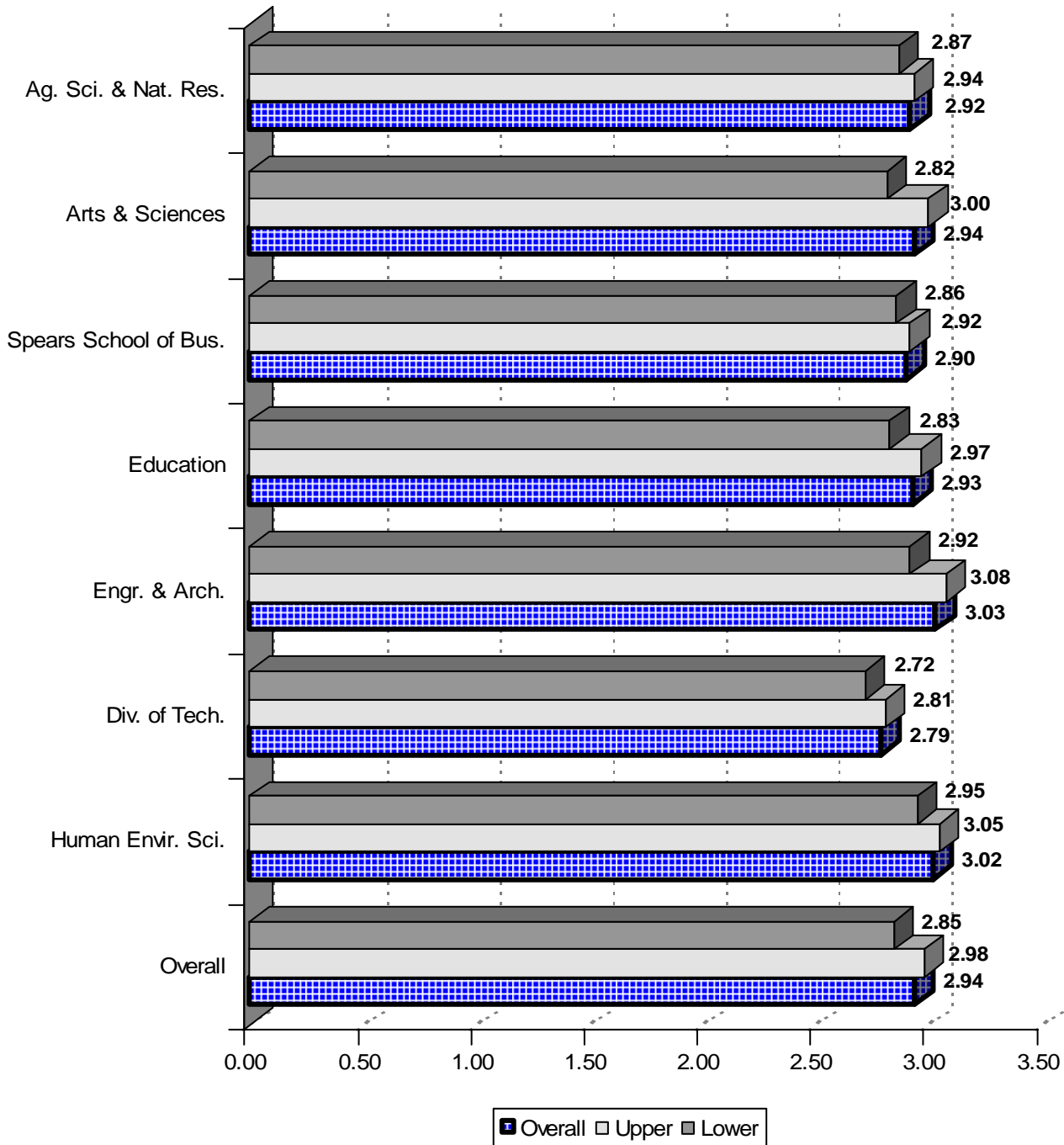


**AVERAGE CUMULATIVE GRADE POINT AVERAGE BY ETHNICITY AND GENDER**  
**OKLAHOMA STATE UNIVERSITY**  
**FALL 2005**



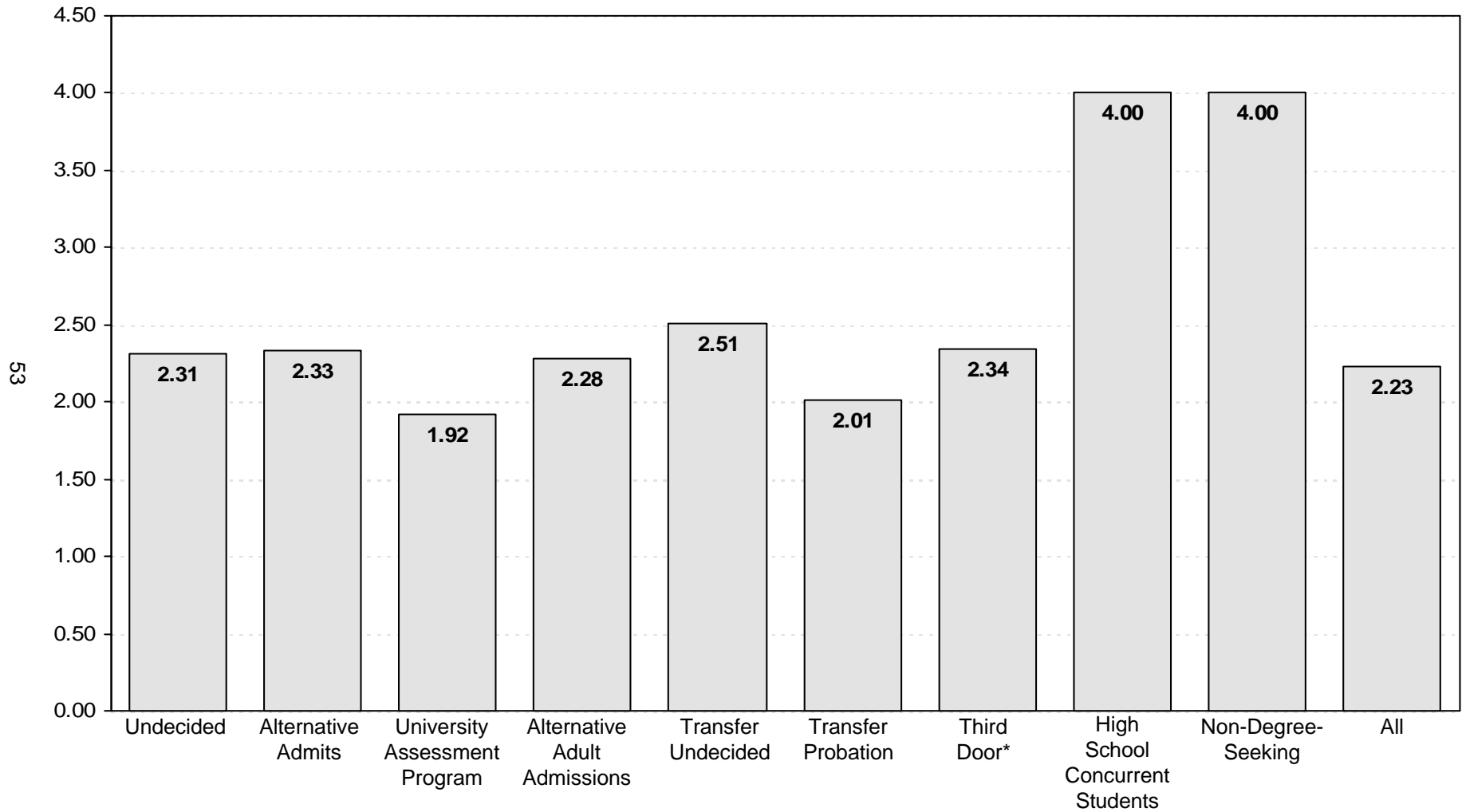
*Note:* The data presented above includes 13,693 undergraduates and 3,079 graduates for whom a cumulative GPA was reported. This chart excludes professional students, new transfers, and new freshmen, but includes students at OSU-Tulsa.

**AVERAGE CUMULATIVE GRADE POINT AVERAGE  
OF UNDERGRADUATE STUDENTS BY COLLEGE AND DIVISION  
OKLAHOMA STATE UNIVERSITY  
FALL 2005**



*Note:* This chart includes 13,395 undergraduates enrolled for Fall 2005 for whom a cumulative GPA was reported. This chart excludes professional students, new freshmen, new transfers, and University Academic Services, but includes students enrolled at OSU-Tulsa.

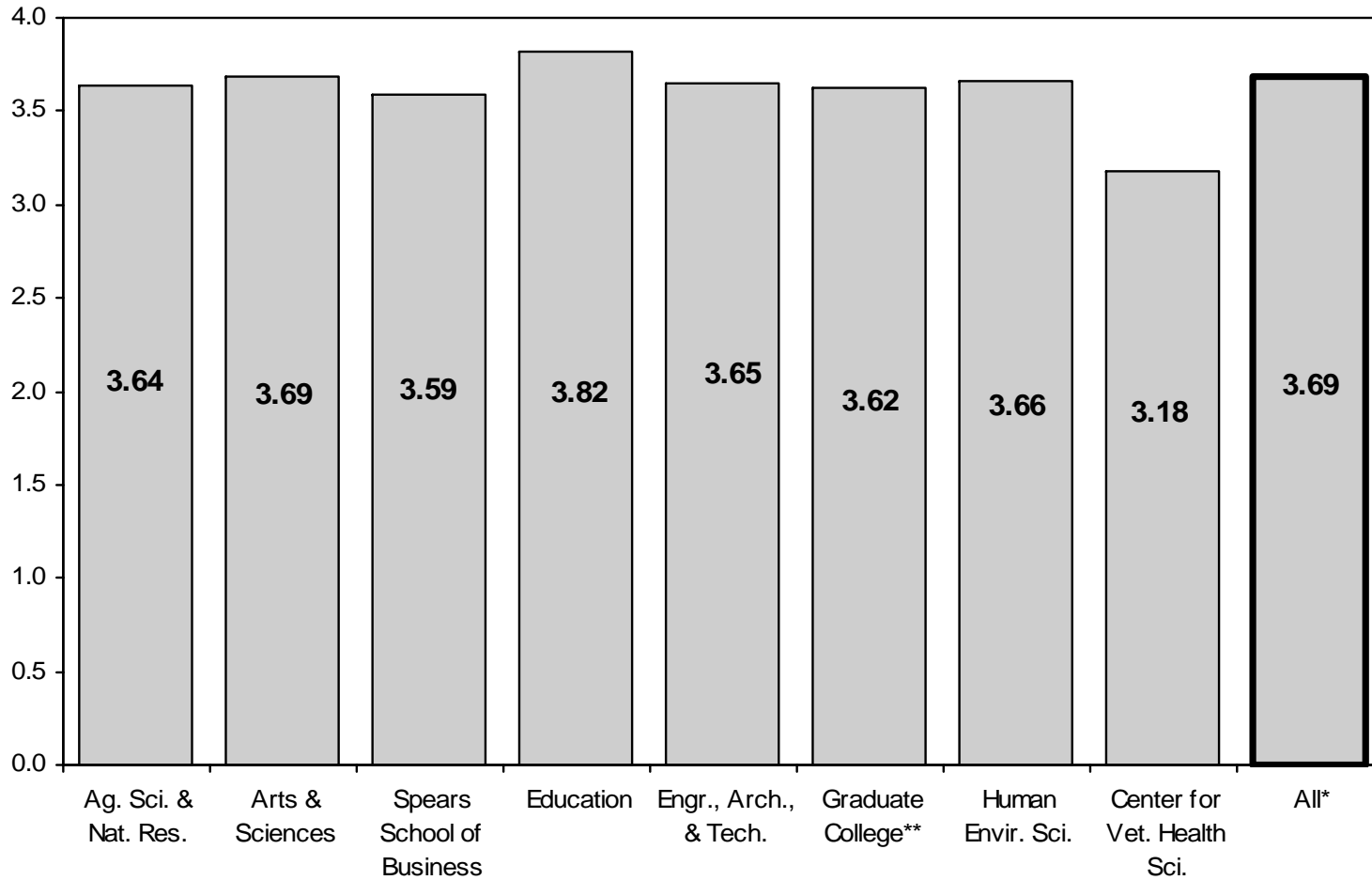
**AVERAGE CUMULATIVE GRADE POINT AVERAGE  
OF UNIVERSITY ACADEMIC SERVICES STUDENTS  
OKLAHOMA STATE UNIVERSITY  
FALL 2005**



\*The third door category includes only students admitted by their high school core GPA who are advised by University Academic Services.

*Note:* This chart includes 298 students enrolled in University Academic Services in the Fall 2005 semester for whom a cumulative GPA was reported.

**AVERAGE CUMULATIVE GRADE POINT AVERAGE  
OF GRADUATE STUDENTS BY COLLEGE  
OKLAHOMA STATE UNIVERSITY  
FALL 2005**

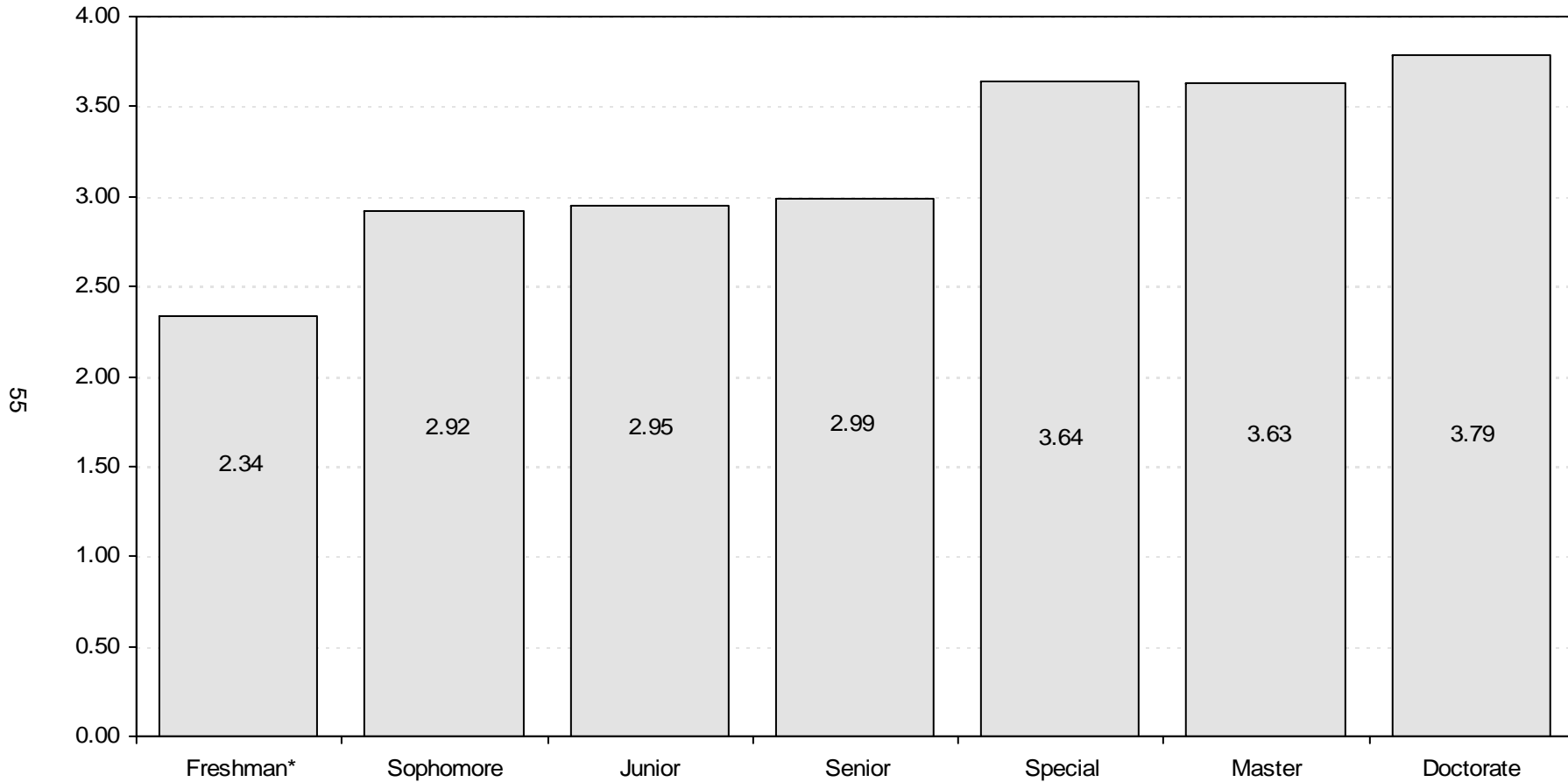


\*Center for Veterinary Health Sciences' professional students are excluded from the overall average.

\*\*Interdisciplinary graduate programs that do not have a specific area of specialization are reported in the Graduate College.

Note: This chart includes 3,079 graduate students and 216 professional students enrolled in the Fall 2005 semester for whom a cumulative GPA was reported. This chart does not include new transfer students but does include students enrolled at OSU-Tulsa.

**AVERAGE CUMULATIVE GRADE POINT AVERAGE  
OF STUDENTS BY CLASS LEVEL  
OKLAHOMA STATE UNIVERSITY  
FALL 2005**



\*Includes students enrolled previously who have earned fewer than 28 semester credit hours. This does not include Fall 2005 new freshmen.

*Note:* This chart includes 16,772 students enrolled in the Fall 2005 semester for whom a cumulative GPA was reported. This chart excludes professional students, new freshmen, and new transfer students, but includes students enrolled at OSU-Tulsa.