

ENROLLMENT PROJECTIONS

OKLAHOMA STATE UNIVERSITY FALL SEMESTER HEADCOUNT ENROLLMENT AND PROJECTIONS

Enrollment at Oklahoma State University increased in Fall 2004 over the previous year by 55 students. Undergraduate retention rates improved significantly in the late 1990's and will continue to have a large impact on enrollment numbers. The addition of OSU-Tulsa and new programs offered in Tulsa will also have a positive impact on overall enrollment in the coming years. The projections in this section are mathematical models based on past enrollments, retention rates, and forecasts of high school graduates.

Forecasts for Oklahoma high school graduates show numbers reflecting an overall decrease throughout the next 5 years. Since the OSU freshman class averages about 80% Oklahoma residents, these forecasts are the primary source of projection numbers for freshman enrollment. The forecasts of Oklahoma high school graduates used in this section are based upon information from the Oklahoma State Department of Education and the State Regents for Higher Education. It assumes that demographic trends such as immigration into and emigration out of the state will remain relatively constant.

While the majority of OSU freshman are Oklahoma residents, the number of out-of-state freshman has shown continual increases over the past years. For the Fall 2004 Semester, the out-of-state freshman enrollment shows an increase of over 100 students. This is due in large part to bolstered recruiting efforts in the state of Texas.

Graduate enrollment at OSU has remained the same this year and is expected to remain stable for the next several years. Nationally, as the economy rebounds and becomes stronger, graduate enrollments may be effected by an improving job market.

In summary, several factors affect enrollment projections at OSU. Some of these factors depend on policy decisions originating with the Oklahoma State Regents for Higher Education and some depend on recruitment policies set by OSU administration. The impact of these policies as well as changing admissions, enrollment, retention, scholarship, and recruiting practices all have a role in determining future enrollment at Oklahoma State University. The Office of Institutional Research & Information Management will continue to monitor developments in these areas and assess their impact on enrollment.

**OKLAHOMA HIGH SCHOOL GRADUATES AND ACT TEST-TAKERS
1994-1995 THROUGH 2003-2004 ACTUAL**

Year	HS Grads	ACT Takers	Percent
1994-1995	34,081	23,038	67.6%
1995-1996	33,744	22,897	67.9%
1996-1997	33,645	24,134	71.7%
1997-1998	36,254	25,303	69.8%
1998-1999	37,396	26,455	70.7%
1999-2000	38,512	27,850	72.3%
2000-2001	38,344	27,910	72.8%
2001-2002	37,699	26,717	70.9%
2002-2003	37,688	27,009	71.7%
2003-2004	37,283	26,556	71.2%

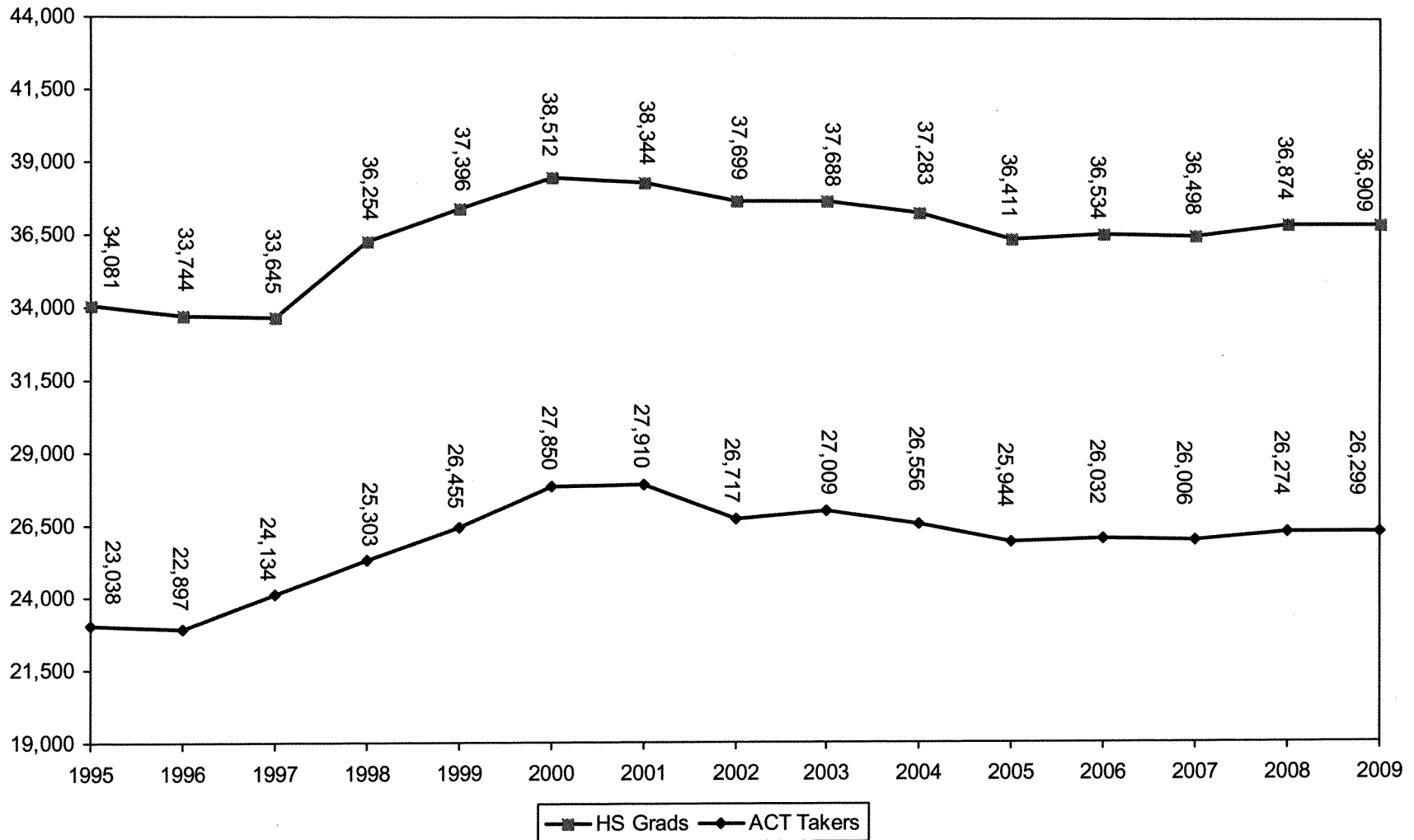
Sources : Student Data Report, Oklahoma State Regents for Higher Education, June 2004.
 ACT High School Profile Report, HS Graduating Class 2004.
Note : 2003-2004 High School Graduate count is a projection.

**PROJECTIONS OF OKLAHOMA HIGH SCHOOL GRADUATES
AND ACT TEST-TAKERS**

2004-2005	36,411	25,944	71.3%
2005-2006	36,534	26,032	71.3%
2006-2007	36,498	26,006	71.3%
2007-2008	36,874	26,274	71.3%
2008-2009	36,909	26,299	71.3%

Sources: Student Data Report, Oklahoma State Regents for Higher Education, June 2004.
 Projections of ACT test-takes are based on past patterns of participation.

**HIGH SCHOOL GRADUATES IN OKLAHOMA
1994-1995 THROUGH 2002-2003 ACTUAL, WITH PROJECTIONS TO 2008-2009**



Note: High School Graduate Numbers are revised based on OSRHE Student Data Report, June 2004. Projections from 2004 – 2008 are also from the OSRHE Student Data Report, June 2004.

**PROJECTION OF NEW FRESHMEN
OKLAHOMA STATE UNIVERSITY
FALL SEMESTERS 1995 THROUGH 2004 (ACTUAL)
WITH PROJECTIONS THROUGH FALL 2009**

Year	Resident	Nonresident US Citizen	International	Total
<u>Actual</u>				
1995	2,090	315	65	2,470
1996	2,056	326	60	2,442
1997	1,997	328	52	2,377
1998	2,221	398	57	2,676
1999	2,501	383	45	2,929
2000	2,644	379	53	3,076
2001	2,566	507	92	3,165
2002	2,634	560	71	3,265
2003	2,835	584	65	3,484
2004	2,526	687	51	3,264
<u>Projection</u>				
2005	2,583	700	50	3,333
2006	2,592	700	50	3,342
2007	2,589	700	50	3,339
2008	2,616	700	50	3,366
2009	2,619	700	50	3,369

Notes: Projections are based on historical patterns of high school graduates and new freshmen enrollees.

Beginning in Fall 2000, non-degree-seeking new freshmen are excluded from these counts.
Beginning in Fall 2004, Concurrent High School students are also excluded from these counts.

Prior to the Fall 2001 semester, out-of-state recruiting efforts were expanded and contributed to the substantial increase in out-of-state new freshmen.

**HEADCOUNT ENROLLMENT PROJECTIONS
OKLAHOMA STATE UNIVERSITY
FALL SEMESTERS 1995 THROUGH 2004 ACTUAL, WITH PROJECTIONS THROUGH FALL 2009**

Year	Freshman		Sophomore	Junior	Senior	Special Undergrad	Total Undergrad	Master	Doctorate	Special Graduate	Total Graduate	Total OSU-Stillwater	Vet Med	OSU-T Undergrad	OSU-T Grad	Other Off-Campus	Grand Total
	New	Other															
Actual																	
1995	2,470	990	3,040	3,644	4,272	11	14,076	1,944	1,206	503	3,408	17,484	275	125	622	23	18,561
1996	2,442	1,015	3,226	3,508	4,311	17	14,427	1,964	1,181	513	3,653	18,080	284	121	619	0	19,125
1997	2,377	1,047	3,308	3,683	4,168	22	14,519	1,955	1,196	474	3,658	18,177	289	109	680	42	19,201
1998	2,645	935	3,464	3,874	4,379	25	14,605	2,090	1,224	588	3,625	18,230	297	140	717	88	19,350
1999	2,904	1,173	3,543	3,923	4,235	36	15,322	1,987	1,137	492	3,902	19,224	294	552	716	95	20,466
2000	3,072	1,076	3,765	3,834	4,339	46	15,814	1,983	1,133	320	3,616	19,430	292	527	865	0	21,087
2001	3,165	1,196	3,886	3,925	4,234	51	16,132	2,122	1,102	302	3,436	19,568	289	747	846	0	21,252
2002	3,265	1,208	3,944	4,115	4,458	49	16,457	2,340	1,180	298	3,526	19,983	292	1,004	839	0	21,872
2003	3,481	1,168	4,083	4,197	4,548	14	17,491	2,328	1,223	265	3,816	21,307	297	1,192	775	0	23,571
2004	3,263	1,199	4,056	4,266	4,604	105	17,493	2,204	1,201	382	3,787	21,280	296	1,296	754	0	23,626
Projection																	
2005	3,333	1,240	4,105	4,299	4,778	110	17,866	2,100	1,100	300	3,500	21,366	293	1,426	840	0	23,924
2006	3,342	1,267	4,207	4,351	4,815	110	18,093	2,100	1,100	300	3,500	21,593	293	1,568	840	0	24,294
2007	3,339	1,270	4,240	4,460	4,874	110	18,293	2,100	1,100	300	3,500	21,793	293	1,725	840	0	24,651
2008	3,366	1,269	4,241	4,494	4,995	110	18,475	2,100	1,100	300	3,500	21,975	293	1,897	840	0	25,006
2009	3,369	1,279	4,264	4,495	5,034	110	18,551	2,100	1,100	300	3,500	22,051	293	2,087	840	0	25,271

Note: New freshmen projections are based on an expected market share of projected Oklahoma High School graduates. On-campus sophomore, junior, and senior projections are based on cohort survival rates using an average of the previous three years. OSU-Tulsa undergraduates are projected to increase approximately 10% per year.