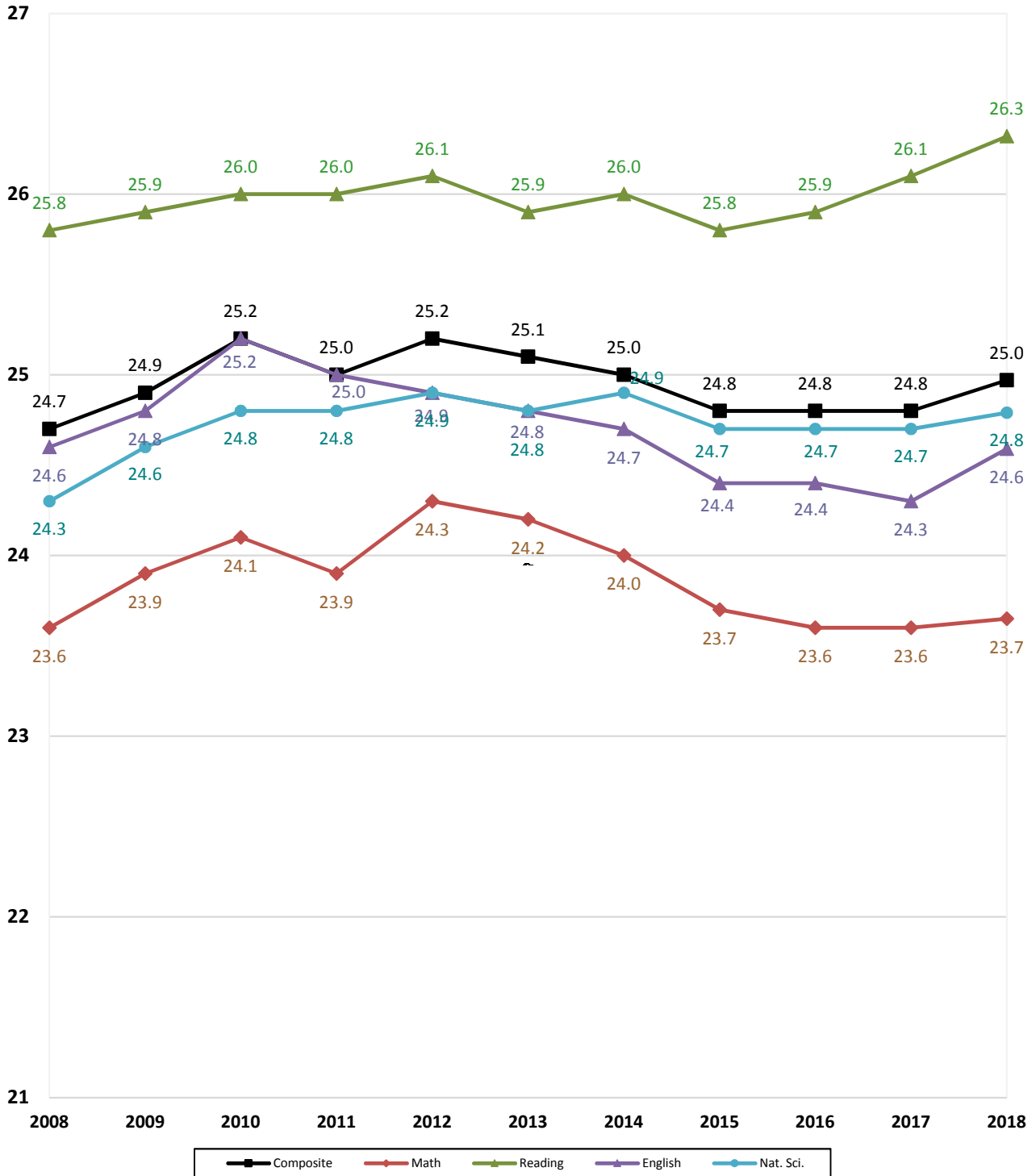


ACADEMIC INFORMATION

TEN-YEAR COMPARISON OF ACT SCORES FOR NEW FRESHMEN
OKLAHOMA STATE UNIVERSITY
FALL SEMESTERS 2007 THROUGH 2018



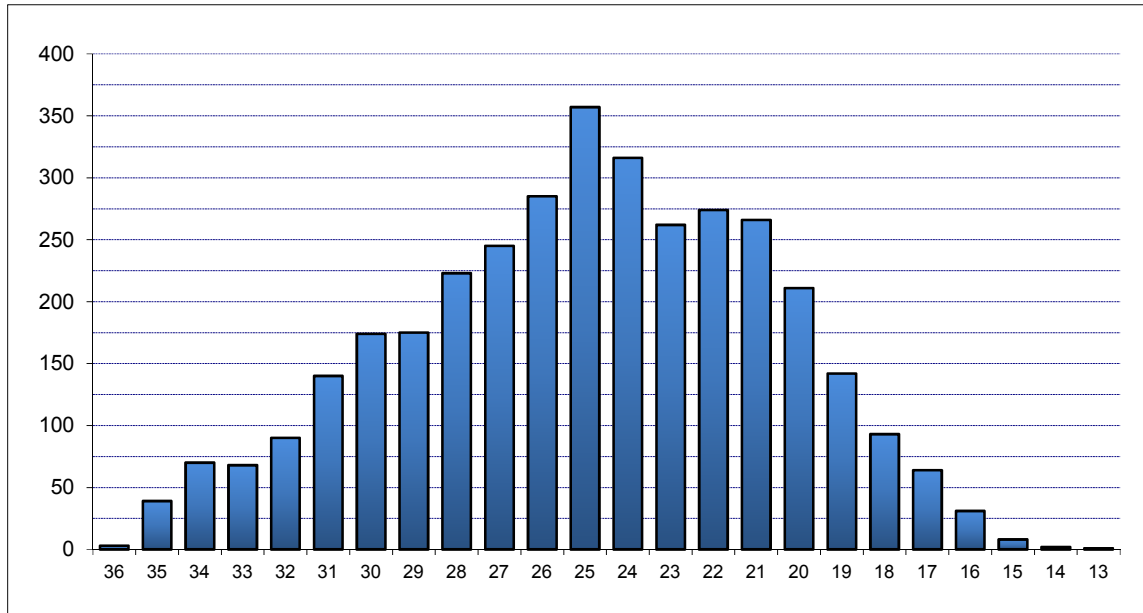
Note: Averages reflect the highest value for each subscore that a student received. ACT composite scores are the average of the highest of each subscore received.

**COMPOSITE ACT AND SAT AVERAGES OF NEW FRESHMEN BY COLLEGE
OKLAHOMA STATE UNIVERSITY
FALL SEMESTER 2018**

College	ACT		SAT	
	Count	Composite	Count	Composite
Ag. Sciences & Natural Res.	425	25.3	44	1,109
Arts & Sciences	895	25.7	106	1,135
Spears School of Business	480	25.4	100	1,127
Education, Health & Aviation	191	24.7	53	1,121
Engineering & Architecture	495	29.0	70	1,241
Div. of Technology	52	27.1	10	1,171
Human Sciences	226	24.8	24	1,066
Overall College Average	2,764	26.1	407	1,144
University College Advising	776	21.1	132	967
Overall Average	3,540	25.0	539	1,100

Note: Composite scores in this table are calculated using the highest subscores obtained for each student. If students have taken both the ACT and the SAT, only the higher score is reported.

**DISTRIBUTION OF NEW FRESHMEN BY COMPOSITE ACT SCORE
OKLAHOMA STATE UNIVERSITY
FALL SEMESTER 2018**



Composite ACT Score	Female	Male	Total	Percent	Cumulative Percent
36	0	3	3	0.08%	0.08%
35	11	28	39	1.10%	1.19%
34	28	42	70	1.98%	3.16%
33	22	46	68	1.92%	5.08%
32	51	39	90	2.54%	7.63%
31	63	77	140	3.95%	11.58%
30	93	81	174	4.92%	16.50%
29	91	84	175	4.94%	21.44%
28	113	110	223	6.30%	27.74%
27	122	123	245	6.92%	34.66%
26	146	139	285	8.05%	42.71%
25	192	165	357	10.08%	52.80%
24	159	157	316	8.93%	61.72%
23	150	112	262	7.40%	69.12%
22	158	116	274	7.74%	76.86%
21	166	100	266	7.51%	84.38%
20	126	85	211	5.96%	90.34%
19	89	53	142	4.01%	94.35%
18	57	36	93	2.63%	96.98%
17	47	17	64	1.81%	98.79%
16	23	8	31	0.88%	99.66%
15	6	2	8	0.23%	99.89%
14	2	0	2	0.06%	99.94%
13	1	0	1	0.03%	99.97%
12	1	0	1	0.03%	100.00%
Total	1,917	1,623	3,540	100.0%	100.00%

Note: ACT scores are only included in this table if they represent the highest test score available for the student. If the student's SAT score (converted to an ACT equivalent) is higher, then the ACT score is not included here.

**ACT AND SAT AVERAGES OF NEW FRESHMEN BY ETHNICITY AND GENDER
OKLAHOMA STATE UNIVERSITY
FALL SEMESTER 2018**

Ethnicity	ACT		SAT	
	Count	Composite	Count	Composite
White	2,475	25.5	355	1,118
African American	143	20.7	40	967
Native American	148	23.9	4	1,080
Hispanic	283	23.7	80	1,096
Asian	50	24.9	10	1,205
Pacific Islander	3	24.3	1	920
Multiracial	431	24.8	36	1,098
International	4	20.3	12	998
Unknown	3	26.0	1	970
Gender				
Female	1,917	24.5	254	1,080
Male	1,623	25.6	285	1,119
Total	3,540	25.0	539	1,100

Note: Composite scores in this table are calculated using the highest subscores obtained for each student. If students have taken both the ACT and the SAT, only the higher score is reported.

**OKLAHOMA HIGH SCHOOL ACT PARTICIPATION STATISTICS
OKLAHOMA STATE UNIVERSITY
2013 THROUGH 2018**

	2013	2014	2015	2016	2017	2018
High School Graduates in Oklahoma ¹	38,443	38,024	39,602	39,929	40,091	39,694
Number of Oklahoma H.S. Students Taking ACT ^{2*}	28,988	28,682	30,844	32,854	42,405	42,388
Total ACT Scores Received by OSU ^{2**}	7,808	7,536	7,951	8,344	12,963	10,142
1st Choice / % of Scores Received	3,061 39.2%	2,984 39.6%	3,202 40.3%	3,207 38.4%	4,513 34.8%	3,942 38.9%
2nd - 6th Choices / % of Scores Received	4,747 60.8%	4,552 60.4%	4,749 59.7%	5,137 61.6%	8,450 65.2%	6,200 61.1%
Applications Received by OSU	11,064	12,281	12,501	13,055	13,635	14,405
New Freshmen Accepted by OSU	8,411	9,192	9,392	9,729	10,128	10,629
% of Applications Received	76.0%	74.8%	75.1%	74.5%	74.3%	73.8%
New Freshmen Enrolled at OSU	3,872	4,057	4,177	4,161	4,220	4,166
% of Freshmen Accepted	46.0%	44.1%	44.5%	42.8%	41.7%	39.2%

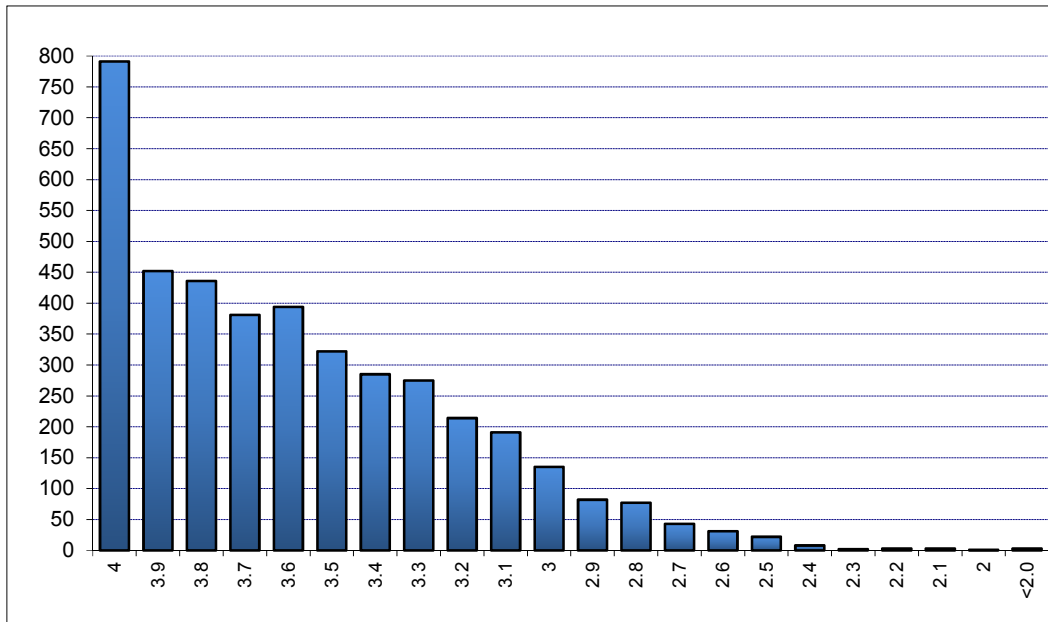
¹Source - Oklahoma High School Graduates - Projections, Oklahoma State Regents for Higher Education (Actuals through 2016, projections for 2017 and 2018)

²Source - ACT Class Profile Report - State, Graduating Class 2018, Oklahoma, Students' Score Report Preferences at Time of Testing

*This includes only Oklahoma high school graduates who took the ACT prior to graduation in the year indicated.

**This includes only those students eligible for college enrollment in the fall semester of the year indicated and does not include multiple ACT scores for any one student.

**DISTRIBUTION OF FRESHMEN HIGH SCHOOL GRADE POINT AVERAGES
OKLAHOMA STATE UNIVERSITY
FALL SEMESTER 2018**

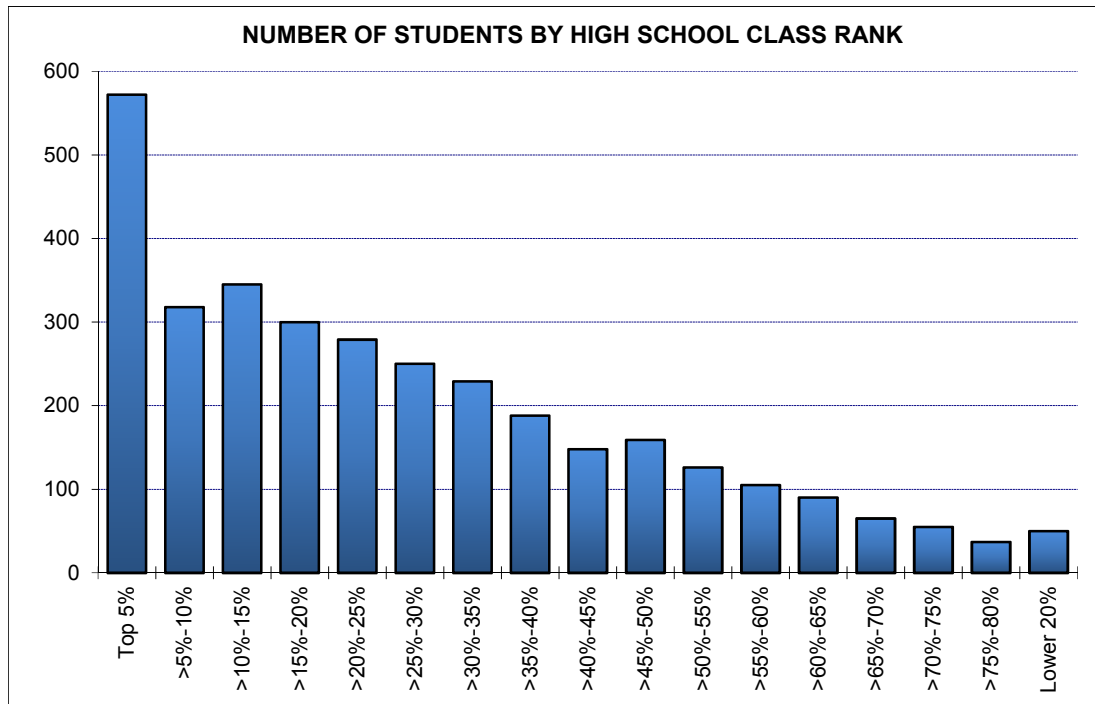


GPA	Number	Cumulative Number	Percent	Cumulative Percent
4	791	791	19.06%	19.06%
3.9	452	1,243	10.89%	29.94%
3.8	436	1,679	10.50%	40.45%
3.7	381	2,060	9.18%	49.63%
3.6	394	2,454	9.49%	59.12%
3.5	322	2,776	7.76%	66.88%
3.4	285	3,061	6.87%	73.74%
3.3	275	3,336	6.62%	80.37%
3.2	214	3,550	5.16%	85.52%
3.1	191	3,741	4.60%	90.12%
3	135	3,876	3.25%	93.38%
2.9	82	3,958	1.98%	95.35%
2.8	77	4,035	1.85%	97.21%
2.7	43	4,078	1.04%	98.24%
2.6	31	4,109	0.75%	98.99%
2.5	22	4,131	0.53%	99.52%
2.4	8	4,139	0.19%	99.71%
2.3	2	4,141	0.05%	99.76%
2.2	3	4,144	0.07%	99.83%
2.1	3	4,147	0.07%	99.90%
2	1	4,148	0.02%	99.93%
<2.0	3	4,151	0.07%	100.0%
Total	4,151	4,151	100.0%	100.0%

Note: 14 new freshman (including international, home schooled, and adult admission students) did not supply a high school GPA.

The average high school GPA reported was 3.57. The average high school core GPA calculated was 3.68.

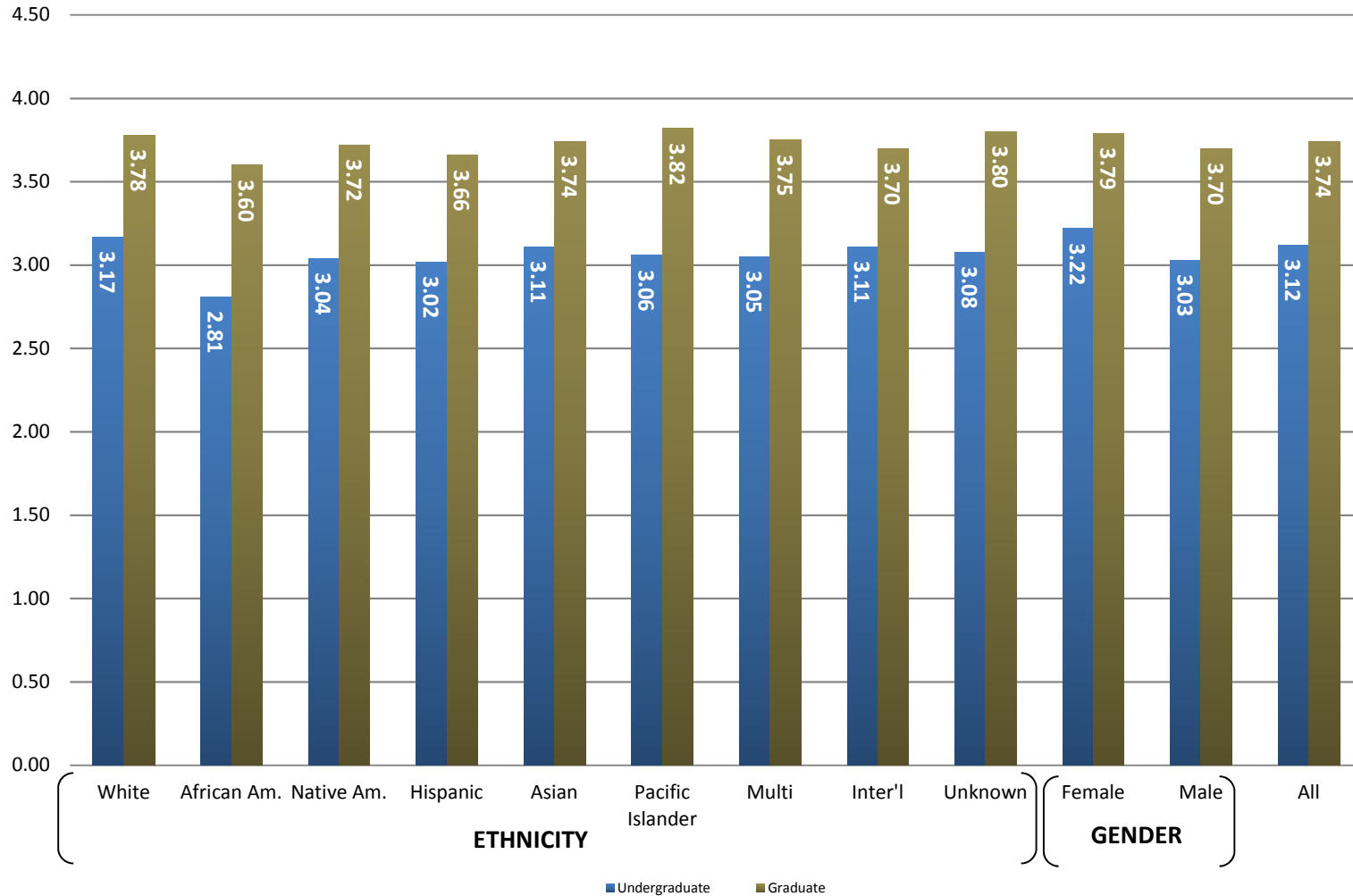
**RANK IN HIGH SCHOOL CLASS BY NUMBER OF NEW FRESHMEN & PERCENT IN EACH RANK
OKLAHOMA STATE UNIVERSITY
FALL SEMESTER 2018**



Rank	Number	Cumulative Number	Percent	Cumulative Percent
Top 5%	572	572	17.25%	17.25%
>5%-10%	318	890	9.59%	26.84%
>10%-15%	345	1,235	10.40%	37.24%
>15%-20%	300	1,535	9.05%	46.29%
>20%-25%	279	1,814	8.41%	54.70%
>25%-30%	250	2,064	7.54%	62.24%
>30%-35%	229	2,293	6.91%	69.15%
>35%-40%	188	2,481	5.67%	74.82%
>40%-45%	148	2,629	4.46%	79.28%
>45%-50%	159	2,788	4.79%	84.08%
>50%-55%	126	2,914	3.80%	87.88%
>55%-60%	105	3,019	3.17%	91.04%
>60%-65%	90	3,109	2.71%	93.76%
>65%-70%	65	3,174	1.96%	95.72%
>70%-75%	55	3,229	1.66%	97.38%
>75%-80%	37	3,266	1.12%	98.49%
Lower 20%	50	3,316	1.51%	100.0%

Note: 850 new freshmen (including international, home schooled, and adult admission students) did not supply a high school rank.

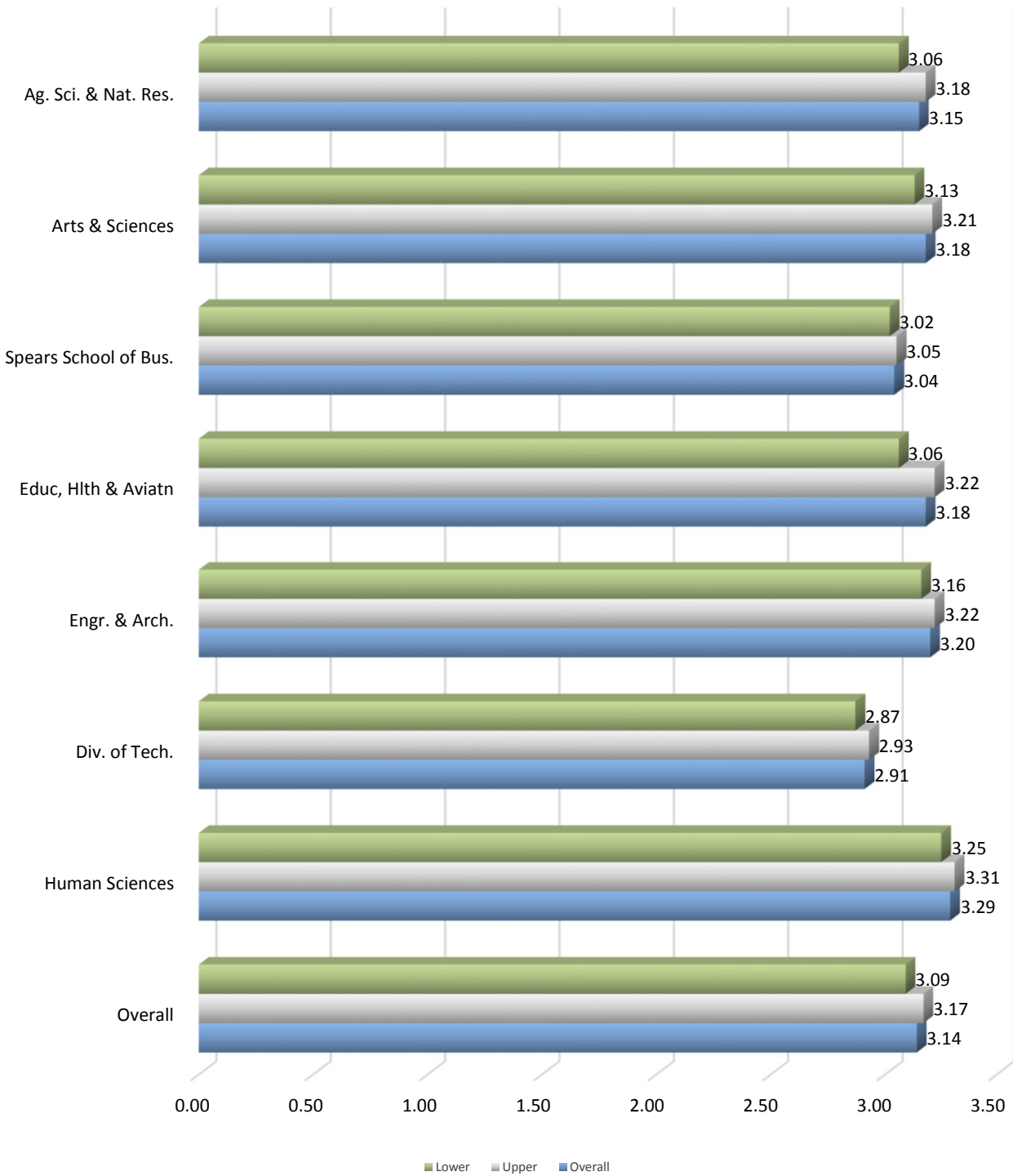
AVERAGE GRADUATE/RETENTION GRADE POINT AVERAGE BY ETHNICITY AND GENDER
OKLAHOMA STATE UNIVERSITY
FALL SEMESTER 2018



51

Note: The data presented above includes 14,757 undergraduates and 2,686 graduates for whom a GPA was reported. This chart excludes professional students, new transfers, and new freshmen, but includes students at OSU-Tulsa.

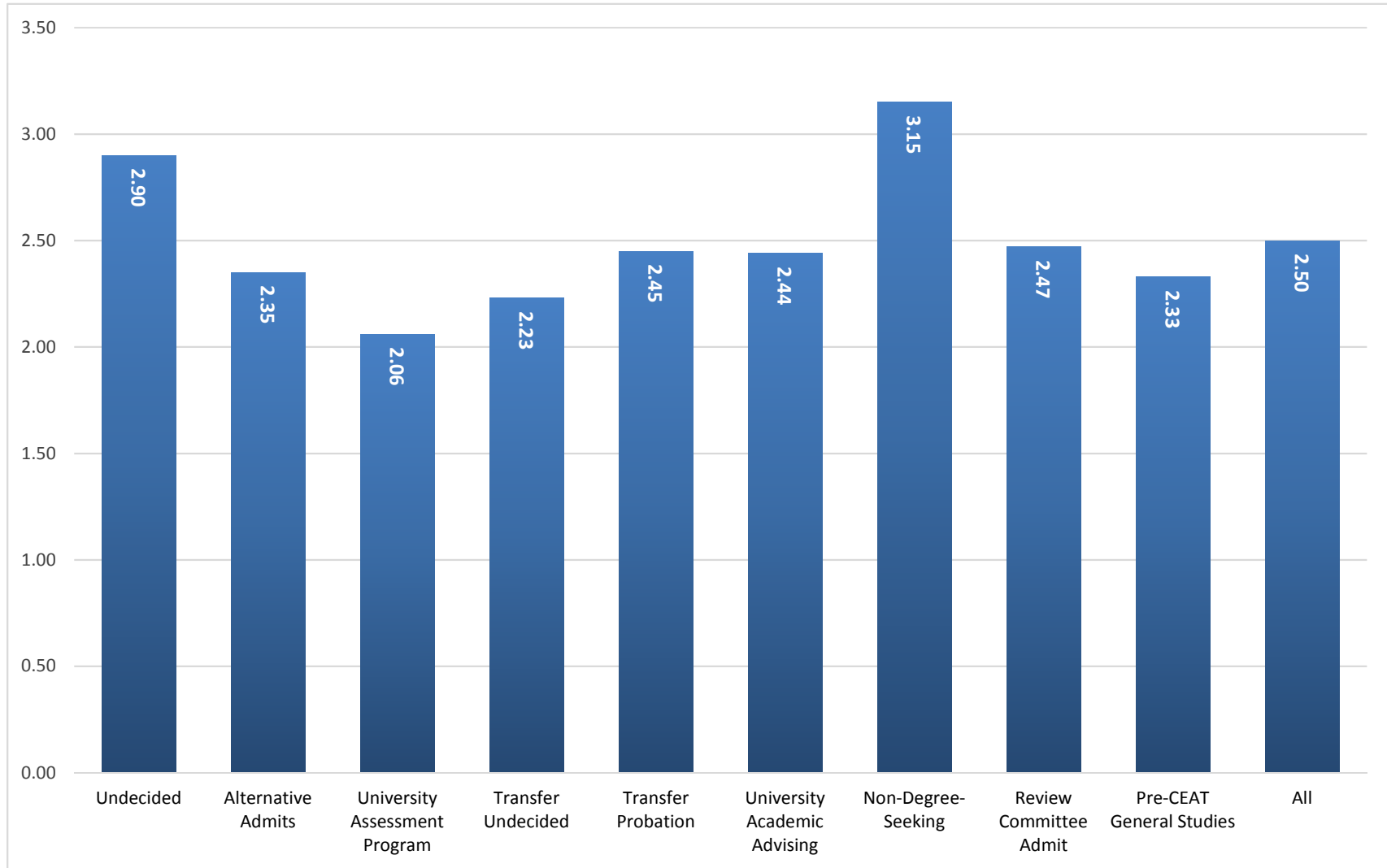
**AVERAGE GRADUATE/RETENTION GRADE POINT AVERAGE
OF UNDERGRADUATE STUDENTS BY COLLEGE AND DIVISION
OKLAHOMA STATE UNIVERSITY
FALL SEMESTER 2018**



Note: This chart includes 14,250 undergraduates enrolled for Fall 2018 for whom a GPA was reported. This chart excludes professional students, new freshmen, new transfers, and University College, but includes students enrolled at OSU-Tulsa.

**AVERAGE GRADUATE/RETENTION GRADE POINT AVERAGE
OF UNIVERSITY COLLEGE ADVISING STUDENTS
OKLAHOMA STATE UNIVERSITY
FALL SEMESTER 2018**

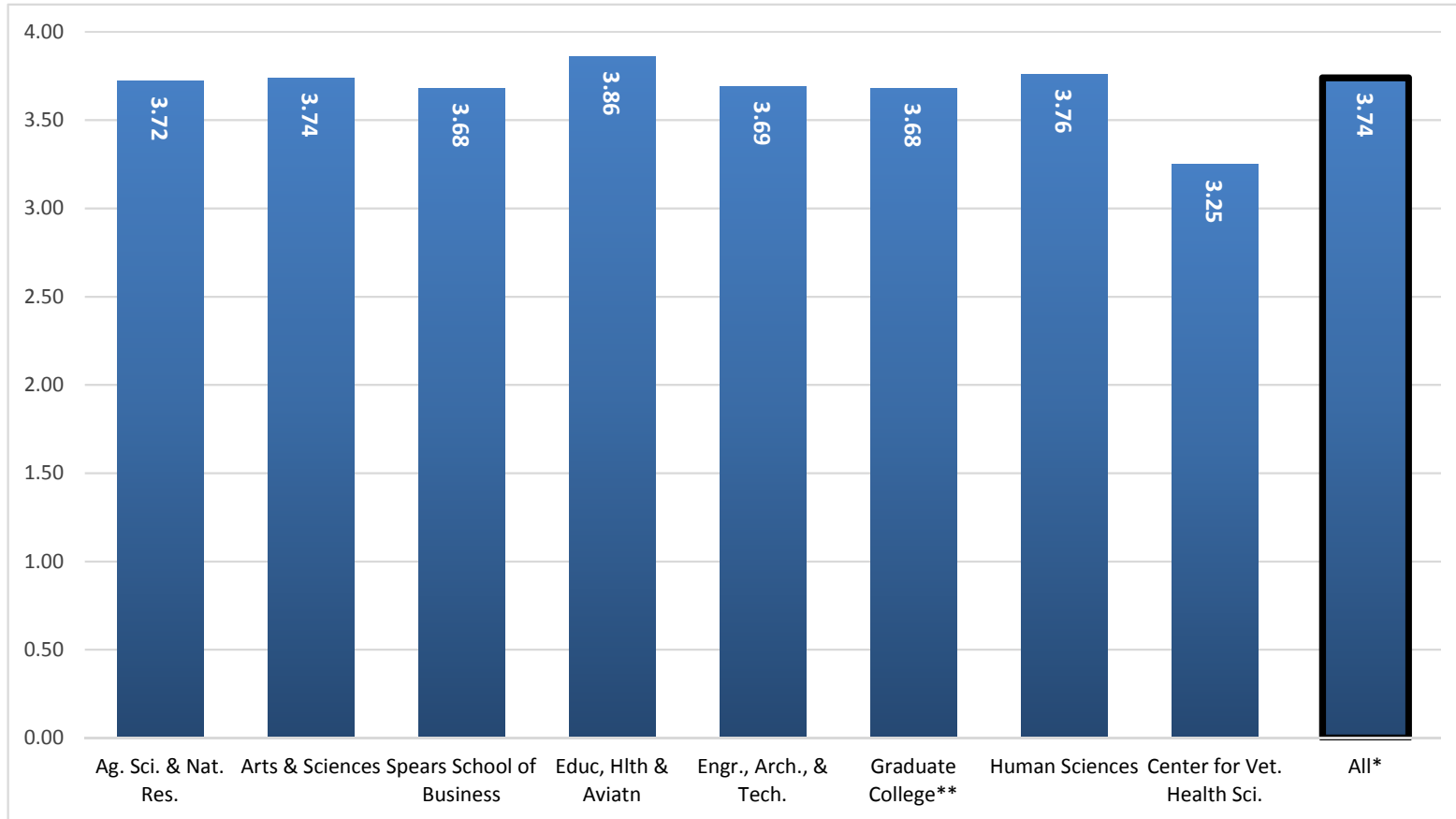
53



Note: This chart includes 482 students enrolled in University College Advising in the Fall 2018 semester for whom a GPA was reported.

**AVERAGE GRADUATE/RETENTION GRADE POINT AVERAGE
OF GRADUATE STUDENTS BY COLLEGE
OKLAHOMA STATE UNIVERSITY
FALL SEMESTER 2018**

54

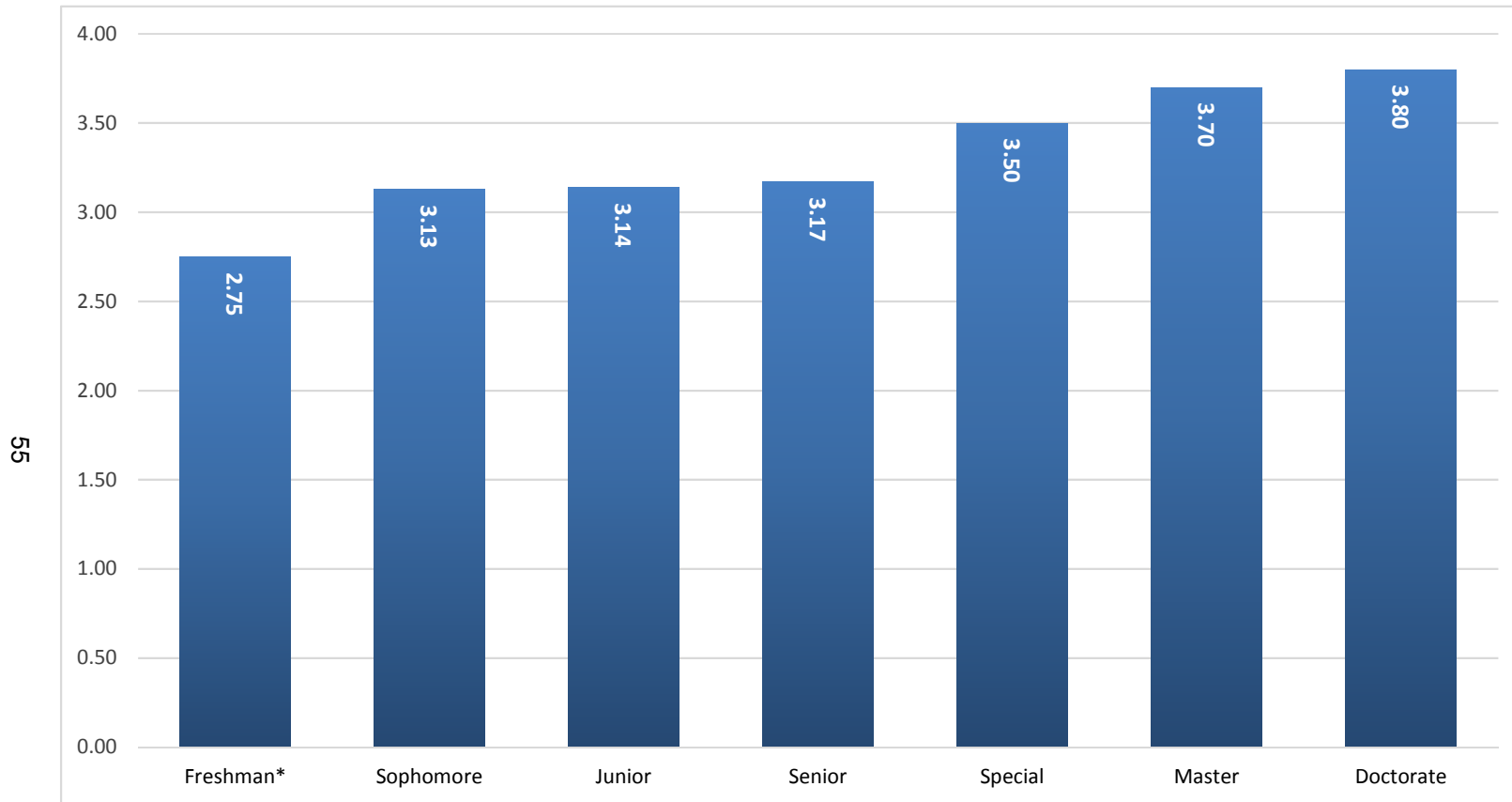


*Center for Veterinary Health Sciences professional students are excluded from the overall average.

**Interdisciplinary graduate programs that do not have a specific area of specialization are reported in the Graduate College.

Note: This chart includes 2,686 graduate students and 264 professional students enrolled in the Fall 2018 semester for whom a cumulative GPA was reported. This chart does not include new transfer students but does include students enrolled at OSU-Tulsa.

**AVERAGE GRADUATE/RETENTION GRADE POINT AVERAGE
OF STUDENTS BY CLASS LEVEL
OKLAHOMA STATE UNIVERSITY
FALL SEMESTER 2018**



*Includes students enrolled previously who have earned fewer than 28 semester credit hours. This does not include Fall 2017 new freshmen.

Note: This chart includes 17,443 students enrolled in the Fall 2018 semester for whom a GPA was reported. This chart excludes professional students, new freshmen, and new transfer students, but includes students enrolled at OSU-Tulsa.