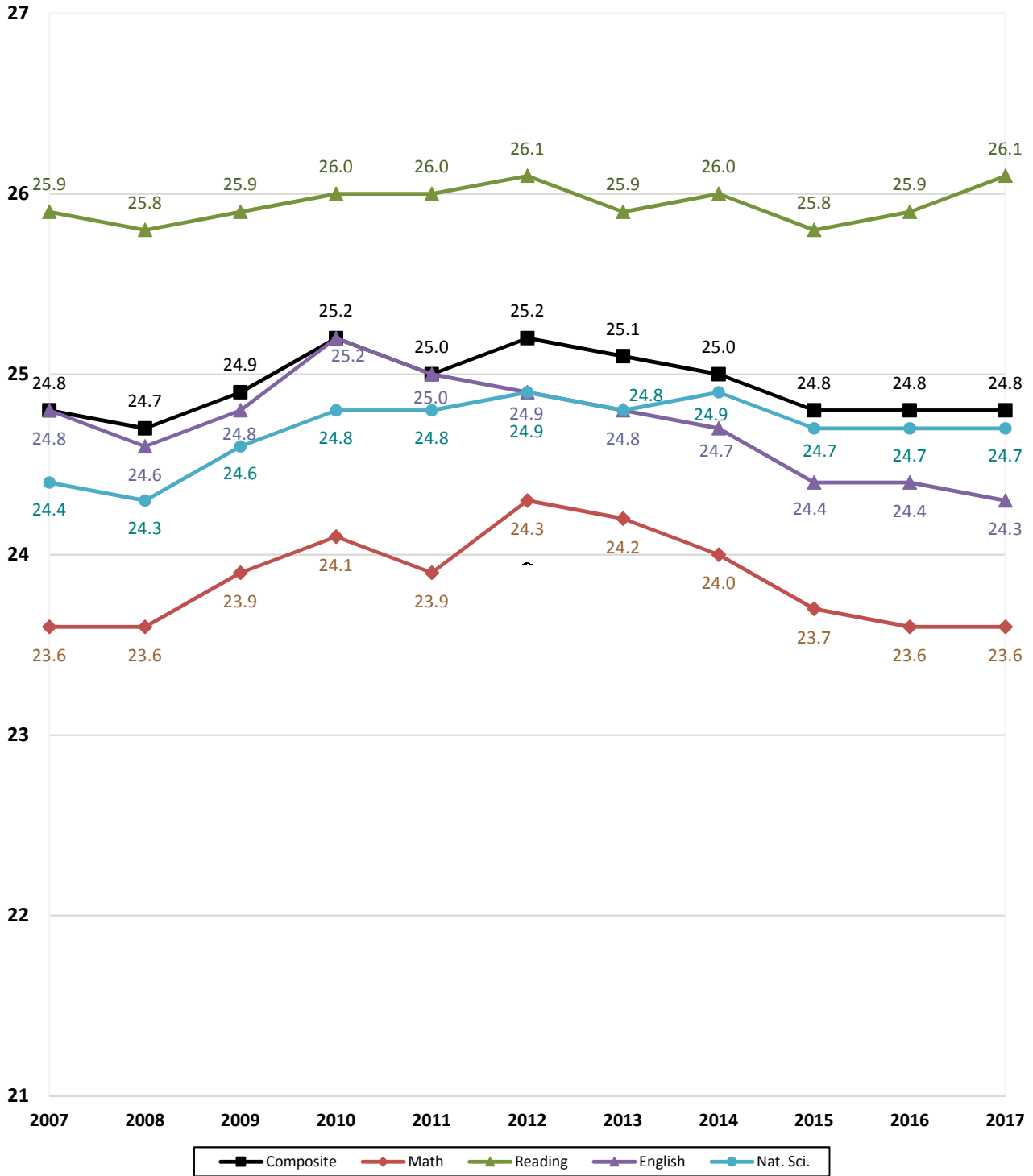


ACADEMIC INFORMATION

TEN-YEAR COMPARISON OF ACT SCORES FOR NEW FRESHMEN
OKLAHOMA STATE UNIVERSITY
FALL SEMESTERS 2007 THROUGH 2017



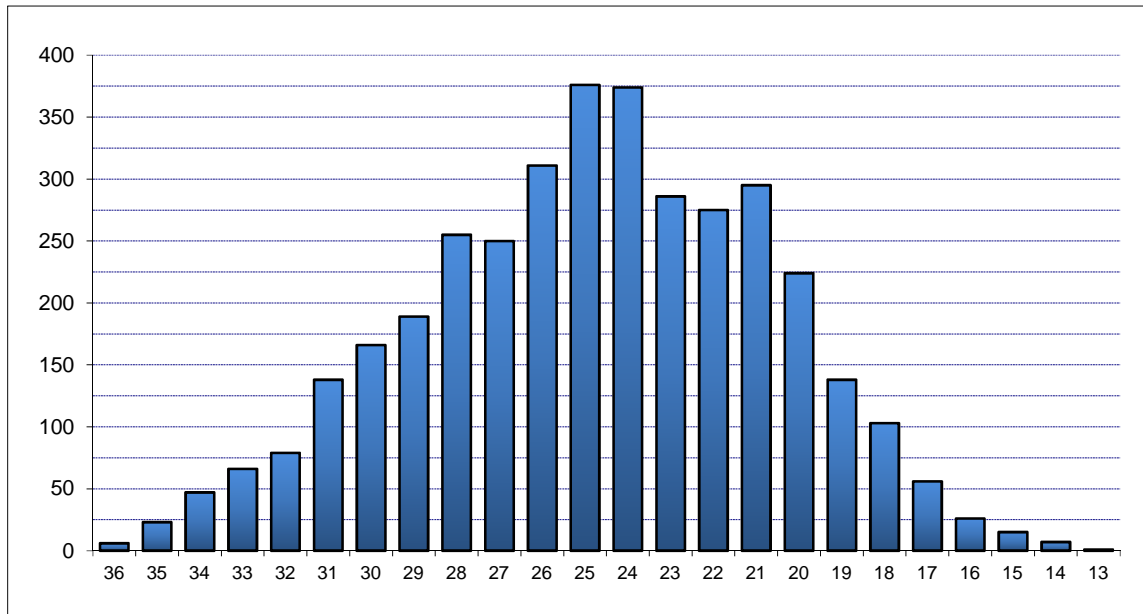
Note: Averages reflect the highest value for each subscore that a student received. ACT composite scores are the average of the highest of each subscore received.

**COMPOSITE ACT AND SAT AVERAGES OF NEW FRESHMEN BY COLLEGE
OKLAHOMA STATE UNIVERSITY
FALL SEMESTER 2017**

College	ACT		SAT	
	Count	Composite	Count	Composite
Ag. Sciences & Natural Res.	480	25.0	56	1,112
Arts & Sciences	915	25.7	106	1,137
Spears School of Business	525	25.1	74	1,136
Education, Health & Aviation	193	24.7	30	1,126
Engineering & Architecture	603	27.7	71	1,194
Div. of Technology	89	24.9	8	1,146
Human Sciences	224	24.1	17	1,129
Overall College Average	3,029	25.7	362	1,143
University College Advising	677	20.9	112	962
Overall Average	3,706	24.8	474	1,100

Note: Composite scores in this table are calculated using the highest subscores obtained for each student. If students have taken both the ACT and the SAT, only the higher score is reported.

**DISTRIBUTION OF NEW FRESHMEN BY COMPOSITE ACT SCORE
OKLAHOMA STATE UNIVERSITY
FALL SEMESTER 2017**



Composite ACT Score	Female	Male	Total	Percent	Cumulative Percent
36	1	5	6	0.16%	0.16%
35	5	18	23	0.62%	0.78%
34	20	27	47	1.27%	2.05%
33	24	42	66	1.78%	3.83%
32	29	50	79	2.13%	5.96%
31	68	70	138	3.72%	9.69%
30	81	85	166	4.48%	14.17%
29	101	88	189	5.10%	19.27%
28	119	136	255	6.88%	26.15%
27	123	127	250	6.75%	32.89%
26	162	149	311	8.39%	41.28%
25	199	177	376	10.15%	51.43%
24	218	156	374	10.09%	61.52%
23	156	130	286	7.72%	69.24%
22	145	130	275	7.42%	76.66%
21	175	120	295	7.96%	84.62%
20	131	93	224	6.04%	90.66%
19	90	48	138	3.72%	94.39%
18	71	32	103	2.78%	97.17%
17	31	25	56	1.51%	98.68%
16	18	8	26	0.70%	99.38%
15	11	4	15	0.40%	99.78%
14	6	1	7	0.19%	99.97%
13	0	1	1	0.03%	100.00%
Total	1,984	1,722	3,706	100.0%	100.00%

Note: ACT scores are only included in this table if they represent the highest test score available for the student. If the student's SAT score (converted to an ACT equivalent) is higher, then the ACT score is not included here.

**ACT AND SAT AVERAGES OF NEW FRESHMEN BY ETHNICITY AND GENDER
OKLAHOMA STATE UNIVERSITY
FALL SEMESTER 2017**

Ethnicity	ACT		SAT	
	Count	Composite	Count	Composite
White	2,608	25.3	329	1,123
African American	153	20.5	40	971
Native American	171	23.5	7	1,084
Hispanic	292	23.7	57	1,063
Asian	52	24.8	7	1,089
Pacific Islander	3	20.3	1	1,230
Multiracial	416	24.4	25	1,096
International	6	24.5	8	1,089
Unknown	5	25.2	0	N/A
Gender				
Female	1,984	24.3	239	1,080
Male	1,722	25.3	235	1,121
Total	3,706	24.8	474	1,100

Note: Composite scores in this table are calculated using the highest subscores obtained for each student. If students have taken both the ACT and the SAT, only the higher score is reported.

**OKLAHOMA HIGH SCHOOL ACT PARTICIPATION STATISTICS
OKLAHOMA STATE UNIVERSITY
2012 THROUGH 2017**

	2012		2013		2014		2015		2016		2017	
High School Graduates in Oklahoma ¹	39,085		38,443		38,024		39,602		39,929		40,091	
Number of Oklahoma H.S. Students Taking ACT ^{2*}	29,342		28,988		28,682		30,844		32,854		42,405	
Total ACT Scores Received by OSU ^{2**}	8,121		7,808		7,536		7,951		8,344		12,963	
1st Choice / % of Scores Received	3,227	39.7%	3,061	39.2%	2,984	39.6%	3,202	40.3%	3,207	38.4%	4,513	34.8%
2nd - 6th Choices / % of Scores Received	4,894	60.3%	4,747	60.8%	4,552	60.4%	4,749	59.7%	5,137	61.6%	8,450	65.2%
Applications Received by OSU	12,056		11,064		12,281		12,501		13,055		13,635	
New Freshmen Accepted by OSU	9,351		8,411		9,192		9,392		9,729		10,128	
% of Applications Received	77.6%		76.0%		74.8%		75.1%		74.5%		74.3%	
New Freshmen Enrolled at OSU	4,289		3,872		4,057		4,177		4,161		4,220	
% of Freshmen Accepted	45.9%		46.0%		44.1%		44.5%		42.8%		41.7%	

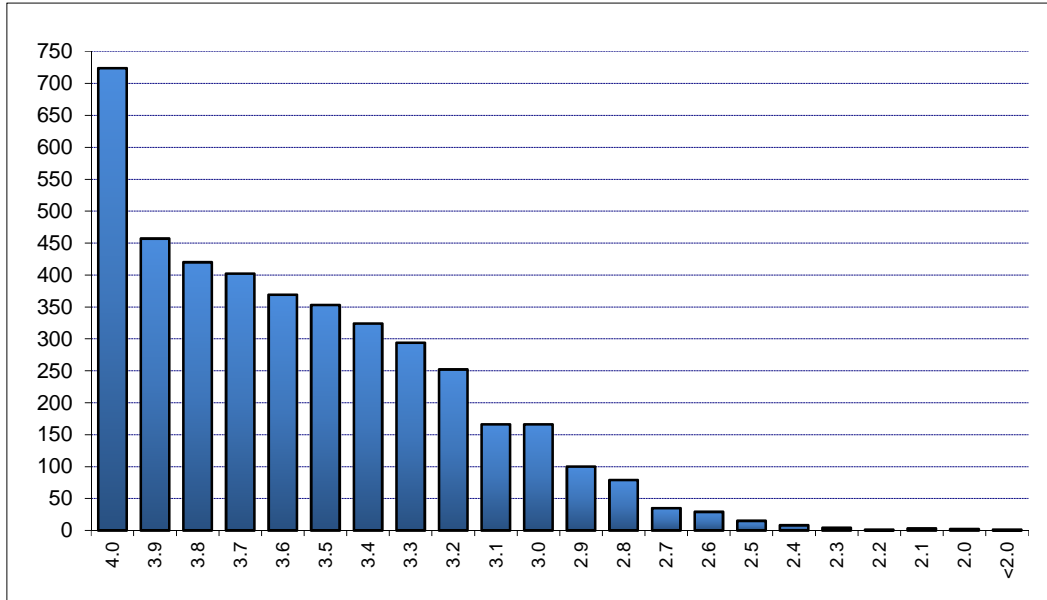
¹Source - Oklahoma High School Graduates - Projections, Oklahoma State Regents for Higher Education (Actuals through 2015, projections for 2016 and 2017)

²Source - ACT Class Profile Report - State, Graduating Class 2017, Oklahoma, Students' Score Report Preferences at Time of Testing

*This includes only Oklahoma high school graduates who took the ACT prior to graduation in the year indicated.

**This includes only those students eligible for college enrollment in the fall semester of the year indicated and does not include multiple ACT scores for any one student.

**DISTRIBUTION OF FRESHMEN HIGH SCHOOL GRADE POINT AVERAGES
OKLAHOMA STATE UNIVERSITY
FALL SEMESTER 2017**

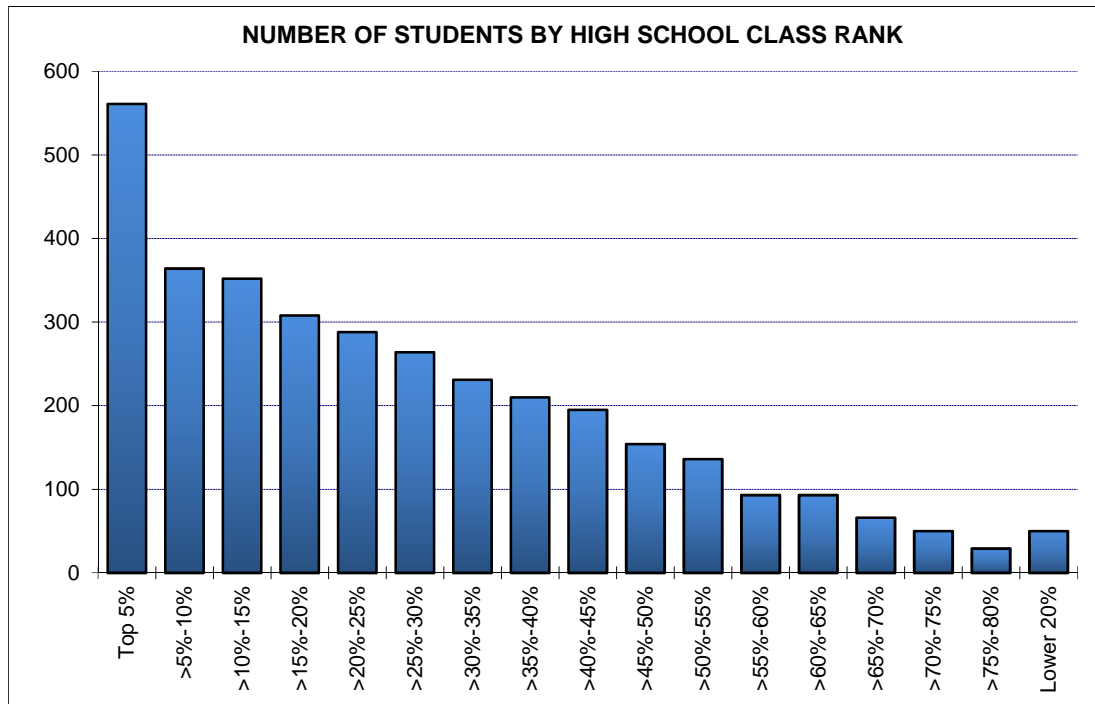


GPA	Number	Cumulative Number	Percent	Cumulative Percent
4.0	724	724	17.22%	17.22%
3.9	457	1,181	10.87%	28.09%
3.8	420	1,601	9.99%	38.08%
3.7	402	2,003	9.56%	47.65%
3.6	369	2,372	8.78%	56.42%
3.5	353	2,725	8.40%	64.82%
3.4	324	3,049	7.71%	72.53%
3.3	294	3,343	6.99%	79.52%
3.2	252	3,595	5.99%	85.51%
3.1	166	3,761	3.95%	89.46%
3.0	166	3,927	3.95%	93.41%
2.9	100	4,027	2.38%	95.79%
2.8	79	4,106	1.88%	97.67%
2.7	35	4,141	0.83%	98.50%
2.6	29	4,170	0.69%	99.19%
2.5	15	4,185	0.36%	99.55%
2.4	8	4,193	0.19%	99.74%
2.3	4	4,197	0.10%	99.83%
2.2	1	4,198	0.02%	99.86%
2.1	3	4,201	0.07%	99.93%
2.0	2	4,203	0.05%	99.98%
<2.0	1	4,204	0.02%	100.0%
Total	4,204	4,204	100.0%	100.0%

Note: 16 new freshman (including international, home schooled, and adult admission students) did not supply a high school GPA.

The average high school GPA reported was 3.56. The average high school core GPA calculated was 3.61.

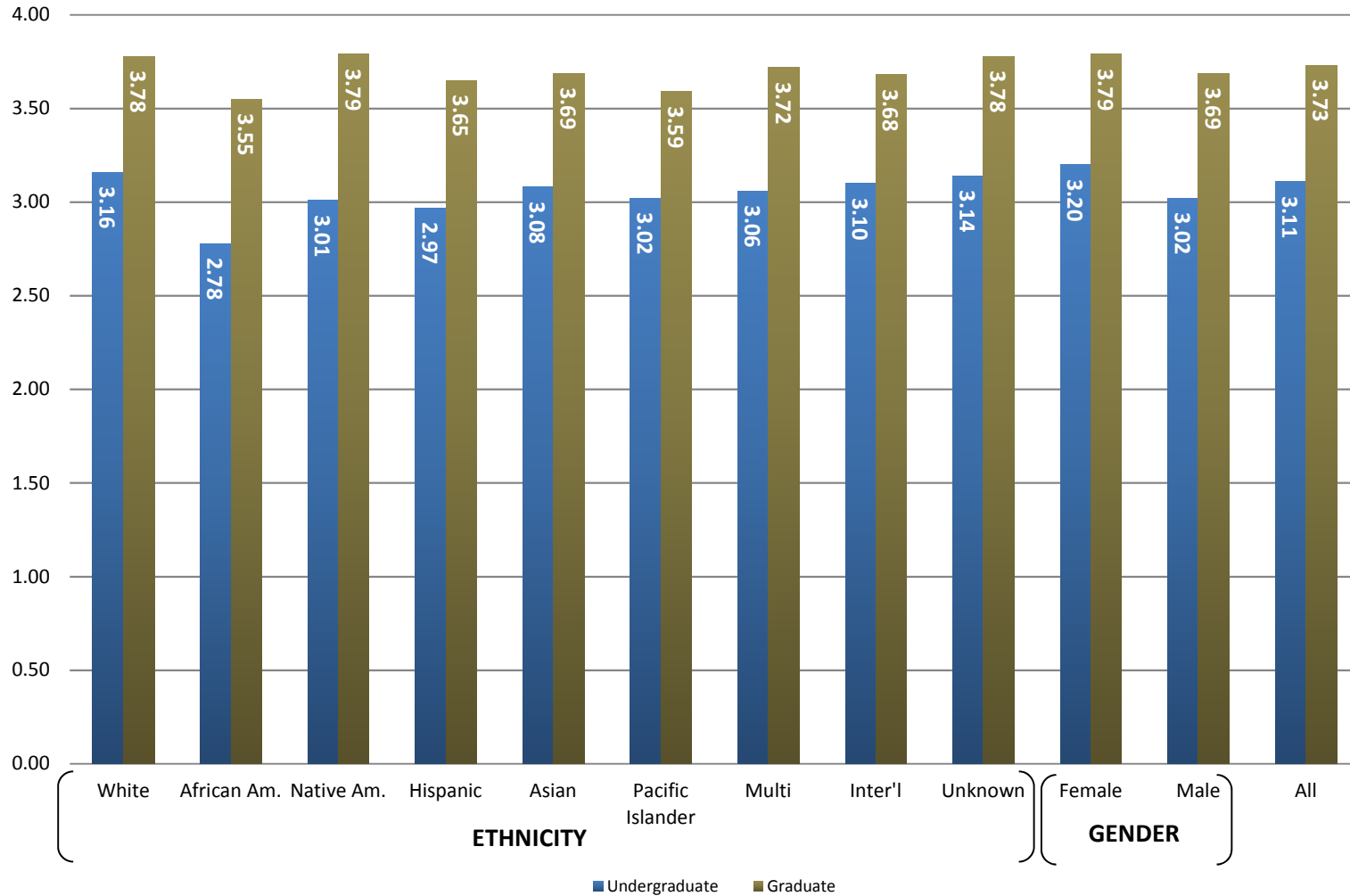
**RANK IN HIGH SCHOOL CLASS BY NUMBER OF NEW FRESHMEN & PERCENT IN EACH RANK
OKLAHOMA STATE UNIVERSITY
FALL SEMESTER 2017**



Rank	Number	Cumulative Number	Percent	Cumulative Percent
Top 5%	561	561	16.29%	16.29%
>5%-10%	364	925	10.57%	26.86%
>10%-15%	352	1,277	10.22%	37.08%
>15%-20%	308	1,585	8.94%	46.02%
>20%-25%	288	1,873	8.36%	54.38%
>25%-30%	264	2,137	7.67%	62.05%
>30%-35%	231	2,368	6.71%	68.76%
>35%-40%	210	2,578	6.10%	74.85%
>40%-45%	195	2,773	5.66%	80.52%
>45%-50%	154	2,927	4.47%	84.99%
>50%-55%	136	3,063	3.95%	88.94%
>55%-60%	93	3,156	2.70%	91.64%
>60%-65%	93	3,249	2.70%	94.34%
>65%-70%	66	3,315	1.92%	96.25%
>70%-75%	50	3,365	1.45%	97.71%
>75%-80%	29	3,394	0.84%	98.55%
Lower 20%	50	3,444	1.45%	100.0%

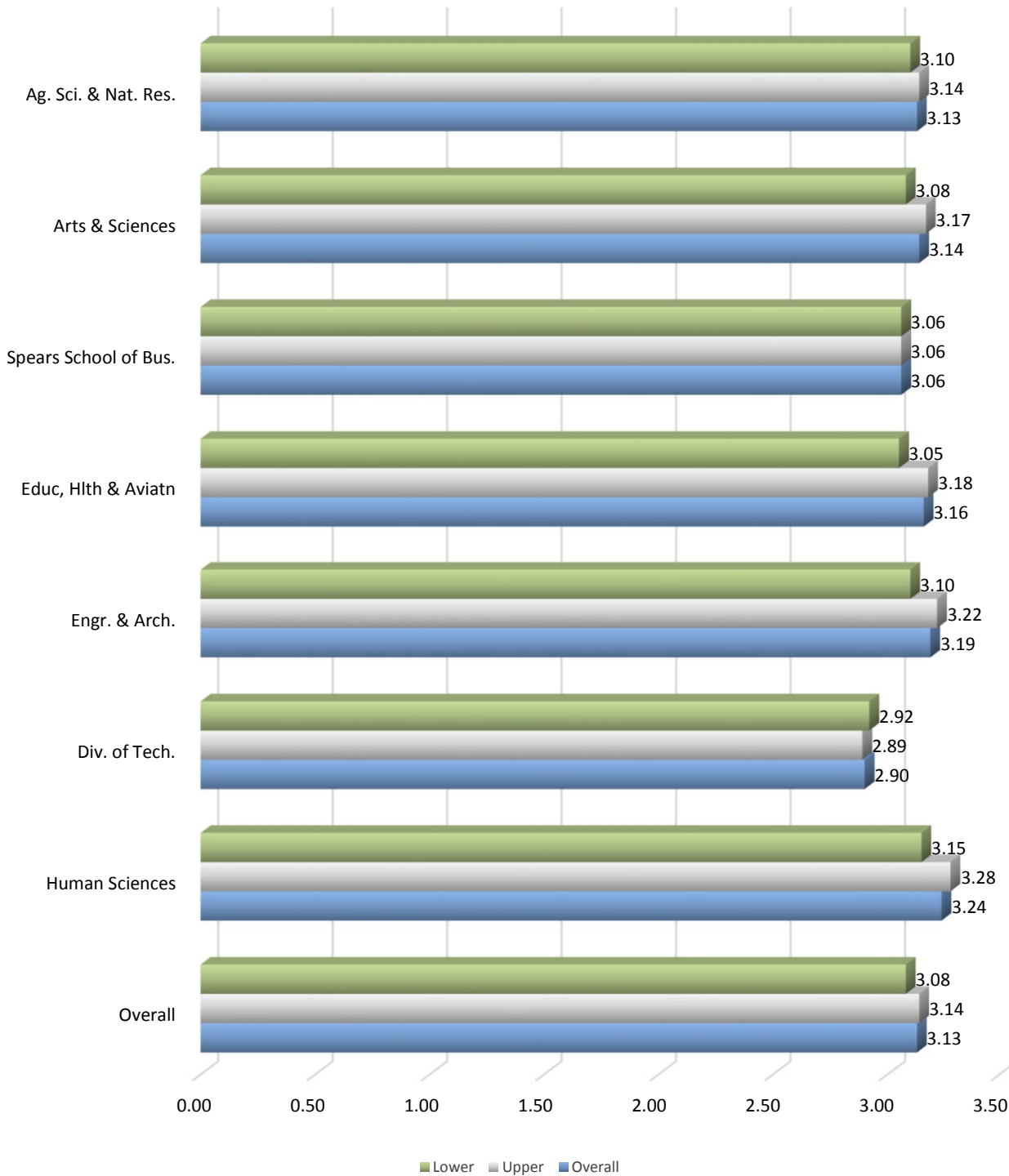
Note: 776 new freshmen (including international, home schooled, and adult admission students) did not supply a high school rank.

AVERAGE GRADUATE/RETENTION GRADE POINT AVERAGE BY ETHNICITY AND GENDER
OKLAHOMA STATE UNIVERSITY
FALL SEMESTER 2017



Note: The data presented above includes 15,022 undergraduates and 2,819 graduates for whom a GPA was reported. This chart excludes professional students, new transfers, and new freshmen, but includes students at OSU-Tulsa.

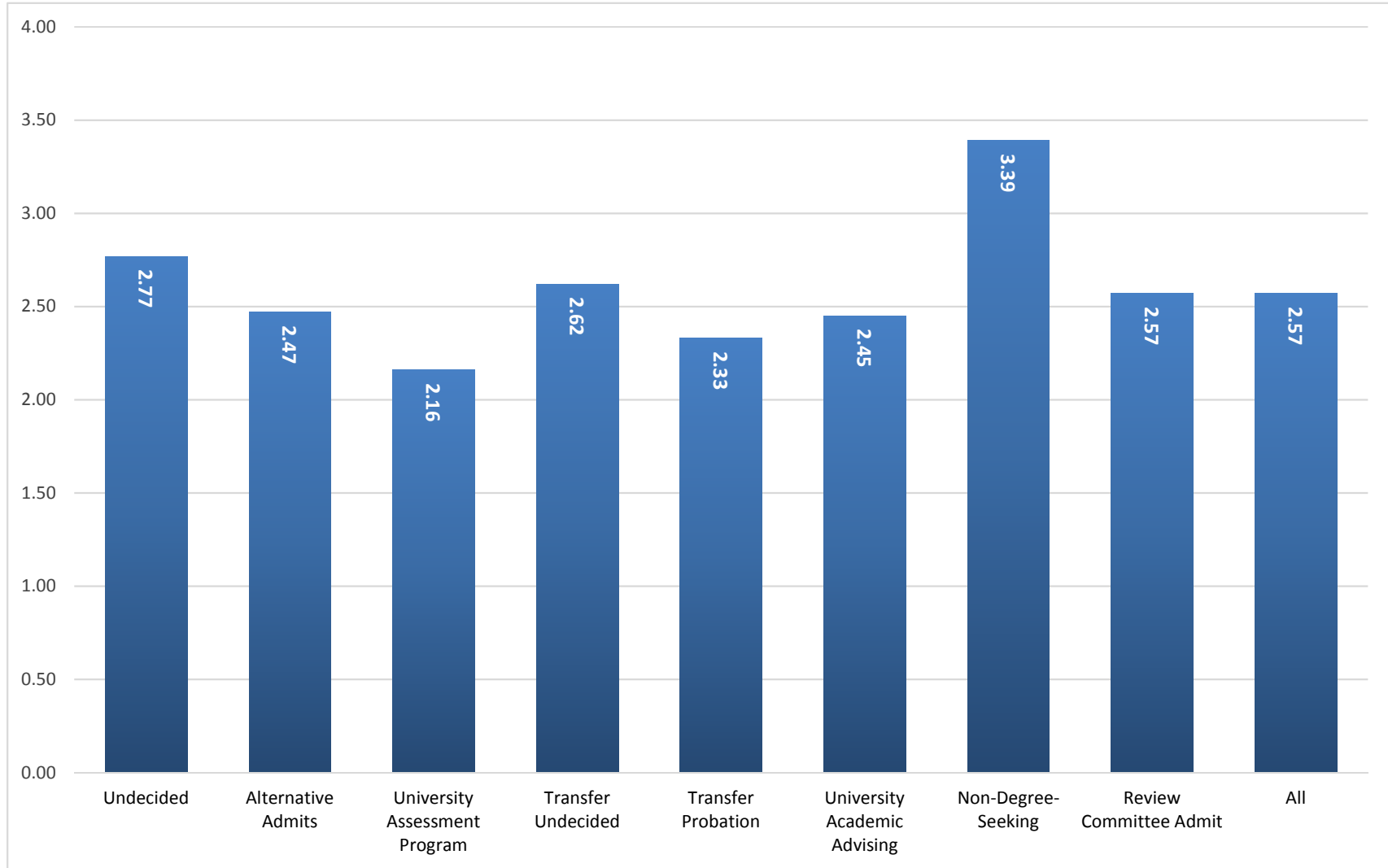
**AVERAGE GRADUATE/RETENTION GRADE POINT AVERAGE
OF UNDERGRADUATE STUDENTS BY COLLEGE AND DIVISION
OKLAHOMA STATE UNIVERSITY
FALL SEMESTER 2017**



Note: This chart includes 14,511 undergraduates enrolled for Fall 2017 for whom a GPA was reported. This chart excludes professional students, new freshmen, new transfers, and University College, but includes students enrolled at OSU-Tulsa.

**AVERAGE GRADUATE/RETENTION GRADE POINT AVERAGE
OF UNIVERSITY COLLEGE ADVISING STUDENTS
OKLAHOMA STATE UNIVERSITY
FALL SEMESTER 2017**

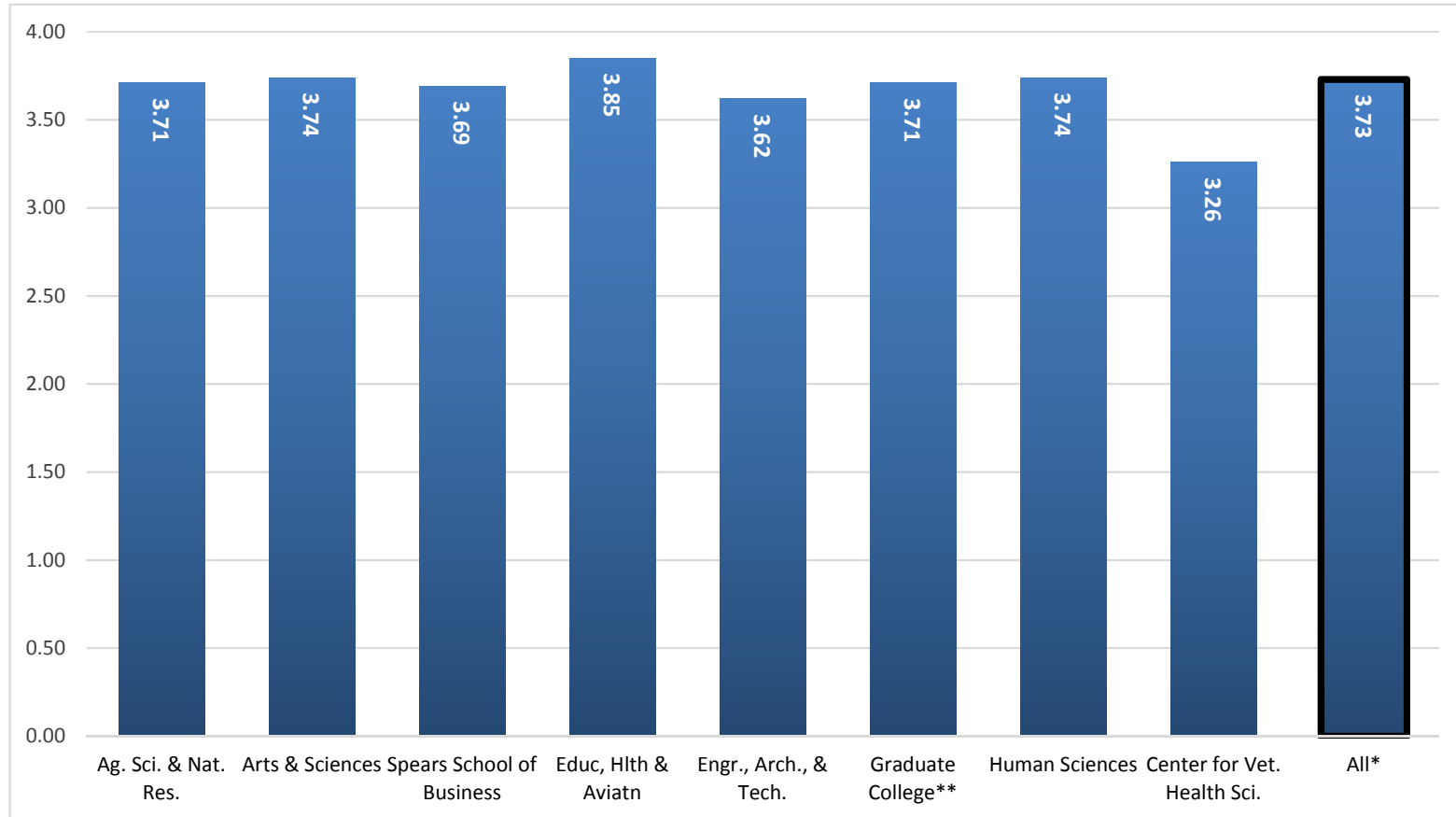
53



Note: This chart includes 511 students enrolled in University College Advising in the Fall 2017 semester for whom a GPA was reported.

**AVERAGE GRADUATE/RETENTION GRADE POINT AVERAGE
OF GRADUATE STUDENTS BY COLLEGE
OKLAHOMA STATE UNIVERSITY
FALL SEMESTER 2017**

54

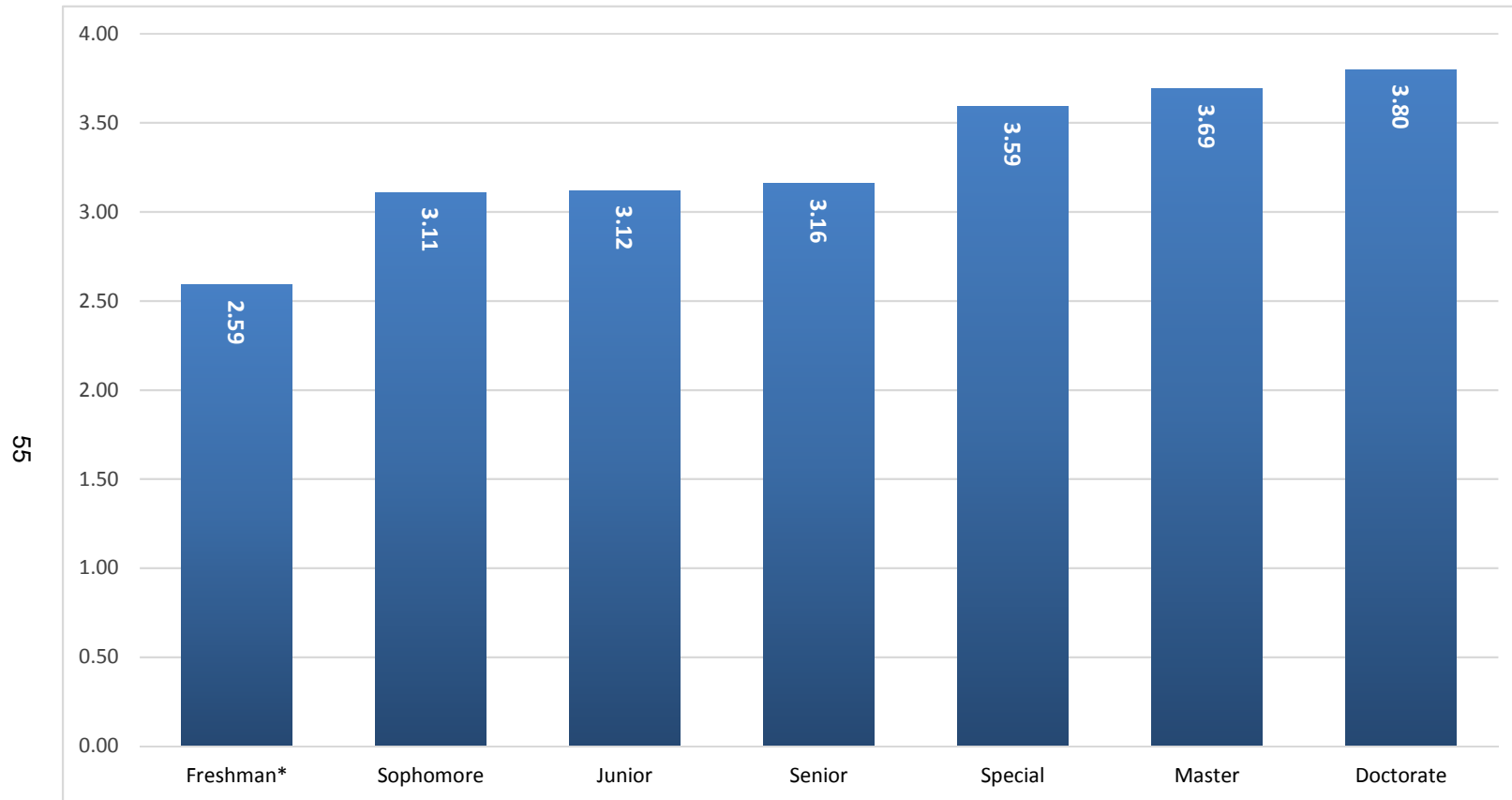


*Center for Veterinary Health Sciences professional students are excluded from the overall average.

**Interdisciplinary graduate programs that do not have a specific area of specialization are reported in the Graduate College.

Note: This chart includes 2,819 graduate students and 252 professional students enrolled in the Fall 2017 semester for whom a cumulative GPA was reported. This chart does not include new transfer students but does include students enrolled at OSU-Tulsa.

**AVERAGE GRADUATE/RETENTION GRADE POINT AVERAGE
OF STUDENTS BY CLASS LEVEL
OKLAHOMA STATE UNIVERSITY
FALL SEMESTER 2017**



*Includes students enrolled previously who have earned fewer than 28 semester credit hours. This does not include Fall 2017 new freshmen.

Note: This chart includes 17,841 students enrolled in the Fall 2017 semester for whom a GPA was reported. This chart excludes professional students, new freshmen, and new transfer students, but includes students enrolled at OSU-Tulsa.