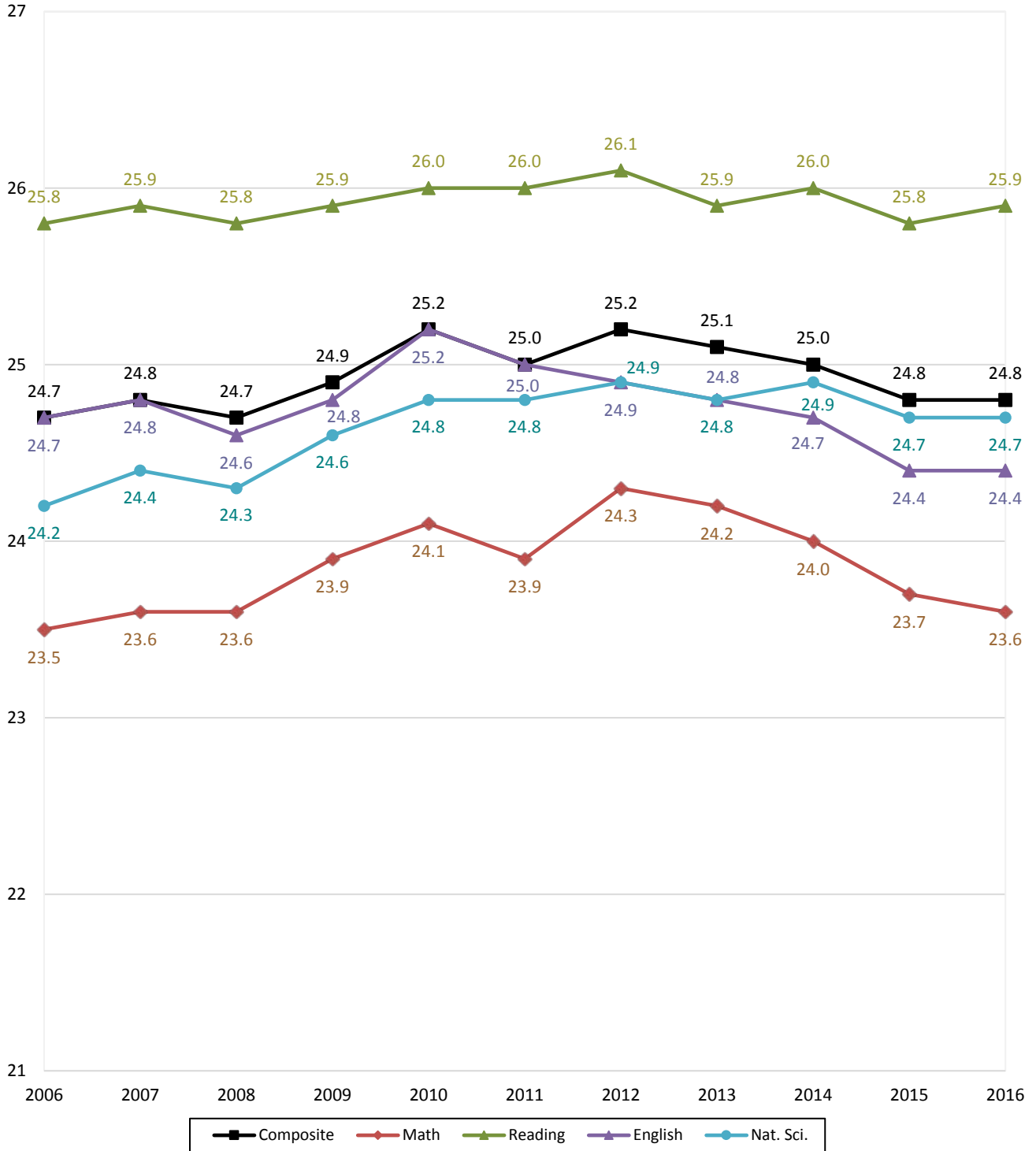


ACADEMIC INFORMATION

TEN-YEAR COMPARISON OF ACT SCORES FOR NEW FRESHMEN
OKLAHOMA STATE UNIVERSITY
FALL SEMESTERS 2006 THROUGH 2016



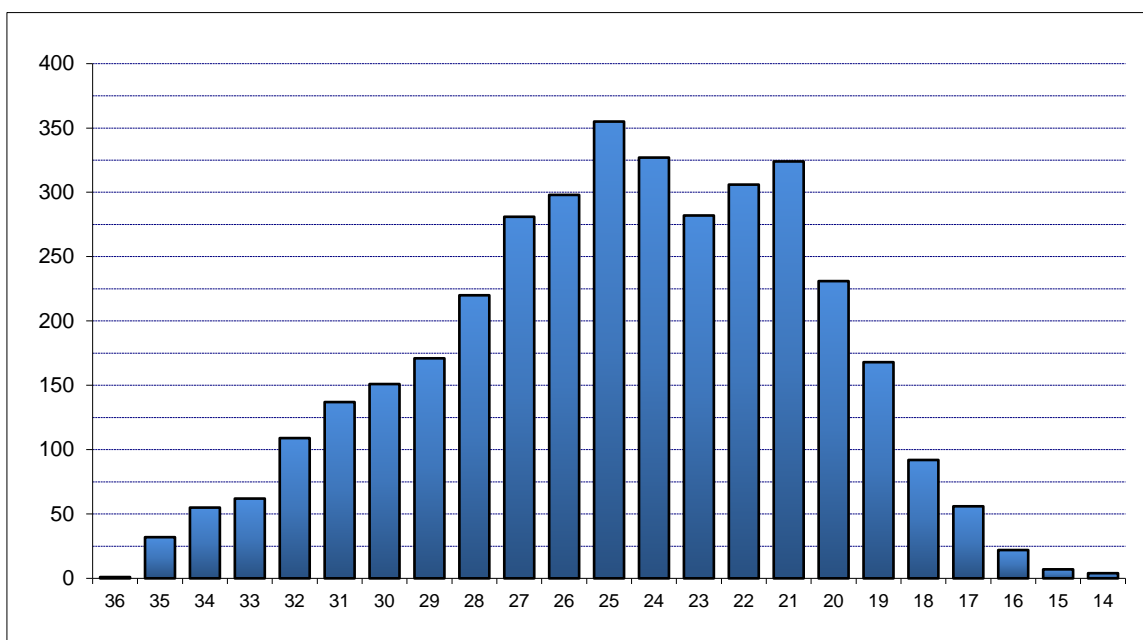
Note: Averages reflect the highest value for each subscore that a student received. ACT composite scores are the average of the highest of each subscore received.

**COMPOSITE ACT AND SAT AVERAGES OF NEW FRESHMEN BY COLLEGE
OKLAHOMA STATE UNIVERSITY
FALL SEMESTER 2016**

College	ACT		SAT	
	Count	Composite	Count	Composite
Ag. Sciences & Natural Res.	509	25.0	65	1,147
Arts & Sciences	783	25.6	75	1,135
Spears School of Business	525	24.9	64	1,113
Education	196	24.3	22	1,126
Engineering & Architecture	698	27.5	59	1,213
Div. of Technology	71	24.3	15	1,097
Human Sciences	251	24.3	23	1,092
Overall College Average	3,033	25.6	323	1,142
University College Advising	658	21.1	110	945
Overall Average	3,691	24.8	433	1,092

Note: Composite scores in this table are calculated using the highest subscores obtained for each student. If students have taken both the ACT and the SAT, only the higher score is reported.

**DISTRIBUTION OF NEW FRESHMEN BY COMPOSITE ACT SCORE
OKLAHOMA STATE UNIVERSITY
FALL SEMESTER 2016**



Composite ACT Score	Female	Male	Total	Percent	Cumulative Percent
36	0	1	1	0.03%	0.03%
35	9	23	32	0.87%	0.89%
34	25	30	55	1.49%	2.38%
33	26	36	62	1.68%	4.06%
32	53	56	109	2.95%	7.02%
31	57	80	137	3.71%	10.73%
30	62	89	151	4.09%	14.82%
29	79	92	171	4.63%	19.45%
28	110	110	220	5.96%	25.41%
27	143	138	281	7.61%	33.03%
26	132	166	298	8.07%	41.10%
25	182	173	355	9.62%	50.72%
24	195	132	327	8.86%	59.58%
23	152	130	282	7.64%	67.22%
22	175	131	306	8.29%	75.51%
21	190	134	324	8.78%	84.29%
20	138	93	231	6.26%	90.54%
19	121	47	168	4.55%	95.10%
18	56	36	92	2.49%	97.59%
17	33	23	56	1.52%	99.11%
16	15	7	22	0.60%	99.70%
15	6	1	7	0.19%	99.89%
14	2	2	4	0.11%	100.00%
Total	1,961	1,730	3,691	100.0%	100.00%

Note: ACT scores are only included in this table if they represent the highest test score available for the student. If the student's SAT score (converted to an ACT equivalent) is higher, then the ACT score is not included here.

**ACT AND SAT AVERAGES OF NEW FRESHMEN BY ETHNICITY AND GENDER
OKLAHOMA STATE UNIVERSITY
FALL SEMESTER 2016**

Ethnicity	ACT		SAT	
	Count	Composite	Count	Composite
White	2,580	25.4	280	1,125
African American	166	21.3	38	970
Native American	170	23.3	11	1,111
Hispanic	303	23.5	62	1,042
Asian	62	24.1	5	1,058
Pacific Islander	3	24.3	1	1,090
Multiracial	385	24.1	15	1,110
International	6	26.8	19	997
Unknown	16	23.4	2	1,000
Gender				
Female	1,961	24.3	217	1,079
Male	1,730	25.4	216	1,104
Total	3,691	24.8	433	1,092

Note: Composite scores in this table are calculated using the highest subscores obtained for each student. If students have taken both the ACT and the SAT, only the higher score is reported.

**OKLAHOMA HIGH SCHOOL ACT PARTICIPATION STATISTICS
OKLAHOMA STATE UNIVERSITY
2011 THROUGH 2016**

	2011		2012		2013		2014		2015		2016	
High School Graduates in Oklahoma ¹	37,719		39,085		38,443		38,024		39,602		39,929	
Number of Oklahoma H.S. Students Taking ACT ^{2*}	28,223		29,342		28,988		28,682		30,844		32,854	
Total ACT Scores Received by OSU ^{2**}	7,836		8,121		7,808		7,536		7,951		8,344	
1st Choice / % of Scores Received	2,983	38.1%	3,227	39.7%	3,061	39.2%	2,984	39.6%	3,202	40.3%	3,207	38.4%
2nd - 6th Choices / % of Scores Received	4,853	61.9%	4,894	60.3%	4,747	60.8%	4,552	60.4%	4,749	59.7%	5,137	61.6%
Applications Received by OSU	9,914		12,056		11,064		12,281		12,501		13,055	
New Freshmen Accepted by OSU	8,099		9,351		8,411		9,192		9,392		9,729	
% of Applications Received	81.7%		77.6%		76.0%		74.8%		75.1%		74.5%	
New Freshmen Enrolled at OSU	3,896		4,289		3,872		4,057		4,177		4,161	
% of Freshmen Accepted	48.1%		45.9%		46.0%		44.1%		44.5%		42.8%	

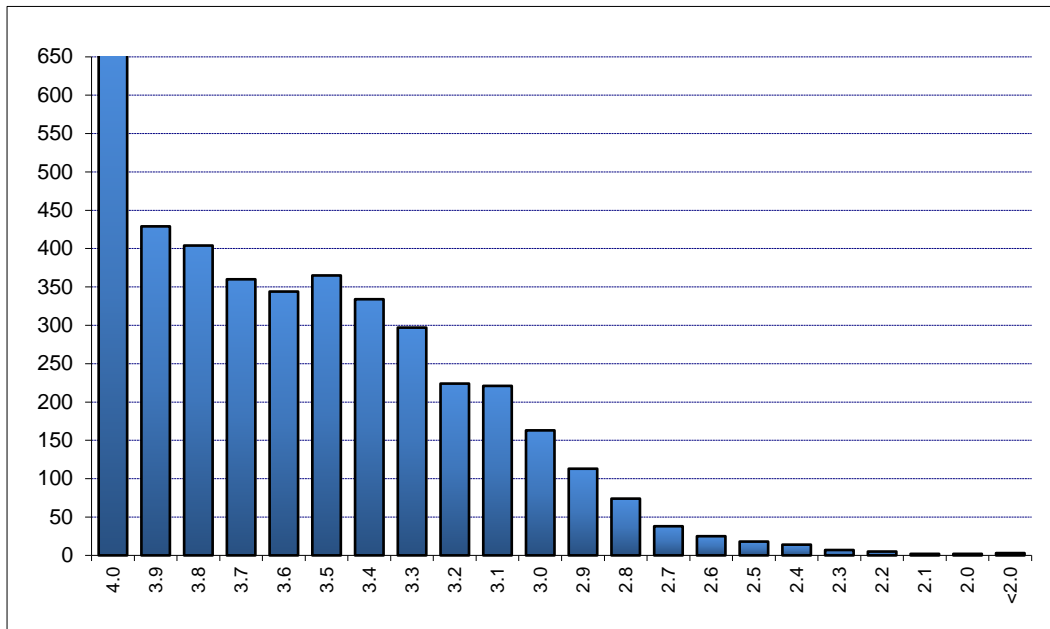
¹Source - Oklahoma High School Graduates - Projections, Oklahoma State Regents for Higher Education (Actuals through 2015, projections for 2016)

²Source - ACT Profile Report - State, Graduating Class 2016, Oklahoma, Students' Score Report Preferences at Time of Testing

*This includes only Oklahoma high school graduates who took the ACT prior to graduation in the year indicated.

**This includes only those students eligible for college enrollment in the fall semester of the year indicated and does not include multiple ACT scores for any one student. Student Profiles prior to Fall 2003 may include multiple ACT scores per person.

**DISTRIBUTION OF FRESHMEN HIGH SCHOOL GRADE POINT AVERAGES
OKLAHOMA STATE UNIVERSITY
FALL SEMESTER 2016**

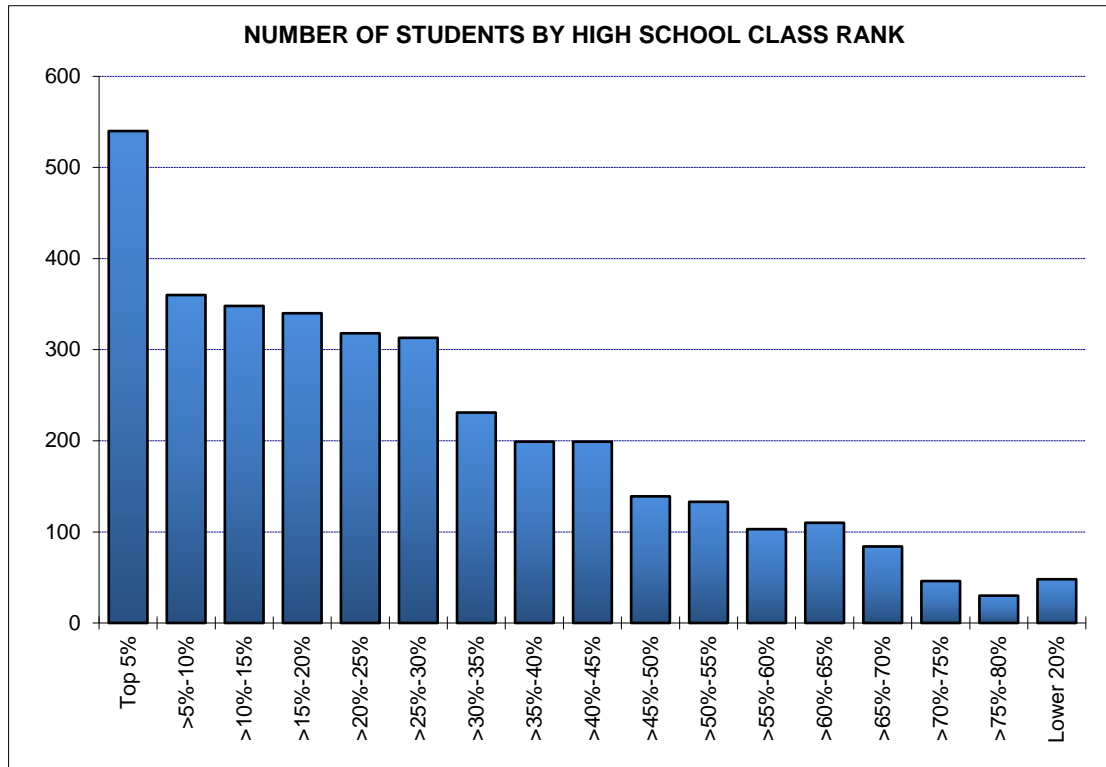


GPA	Number	Cumulative Number	Percent	Cumulative Percent
4.0	672	672	16.33%	16.33%
3.9	429	1,101	10.43%	26.76%
3.8	404	1,505	9.82%	36.58%
3.7	360	1,865	8.75%	45.33%
3.6	344	2,209	8.36%	53.69%
3.5	365	2,574	8.87%	62.57%
3.4	334	2,908	8.12%	70.69%
3.3	297	3,205	7.22%	77.90%
3.2	224	3,429	5.44%	83.35%
3.1	221	3,650	5.37%	88.72%
3.0	163	3,813	3.96%	92.68%
2.9	113	3,926	2.75%	95.43%
2.8	74	4,000	1.80%	97.23%
2.7	38	4,038	0.92%	98.15%
2.6	25	4,063	0.61%	98.76%
2.5	18	4,081	0.44%	99.20%
2.4	14	4,095	0.34%	99.54%
2.3	7	4,102	0.17%	99.71%
2.2	5	4,107	0.12%	99.83%
2.1	2	4,109	0.05%	99.88%
2.0	2	4,111	0.05%	99.93%
<2.0	3	4,114	0.07%	100.0%
Total	4,114	4,114	100.0%	100.0%

Note: 47 new freshman (including international, home schooled, and adult admission students) did not supply a high school GPA.

The average high school GPA reported was 3.54. The average high school core GPA calculated was 3.60.

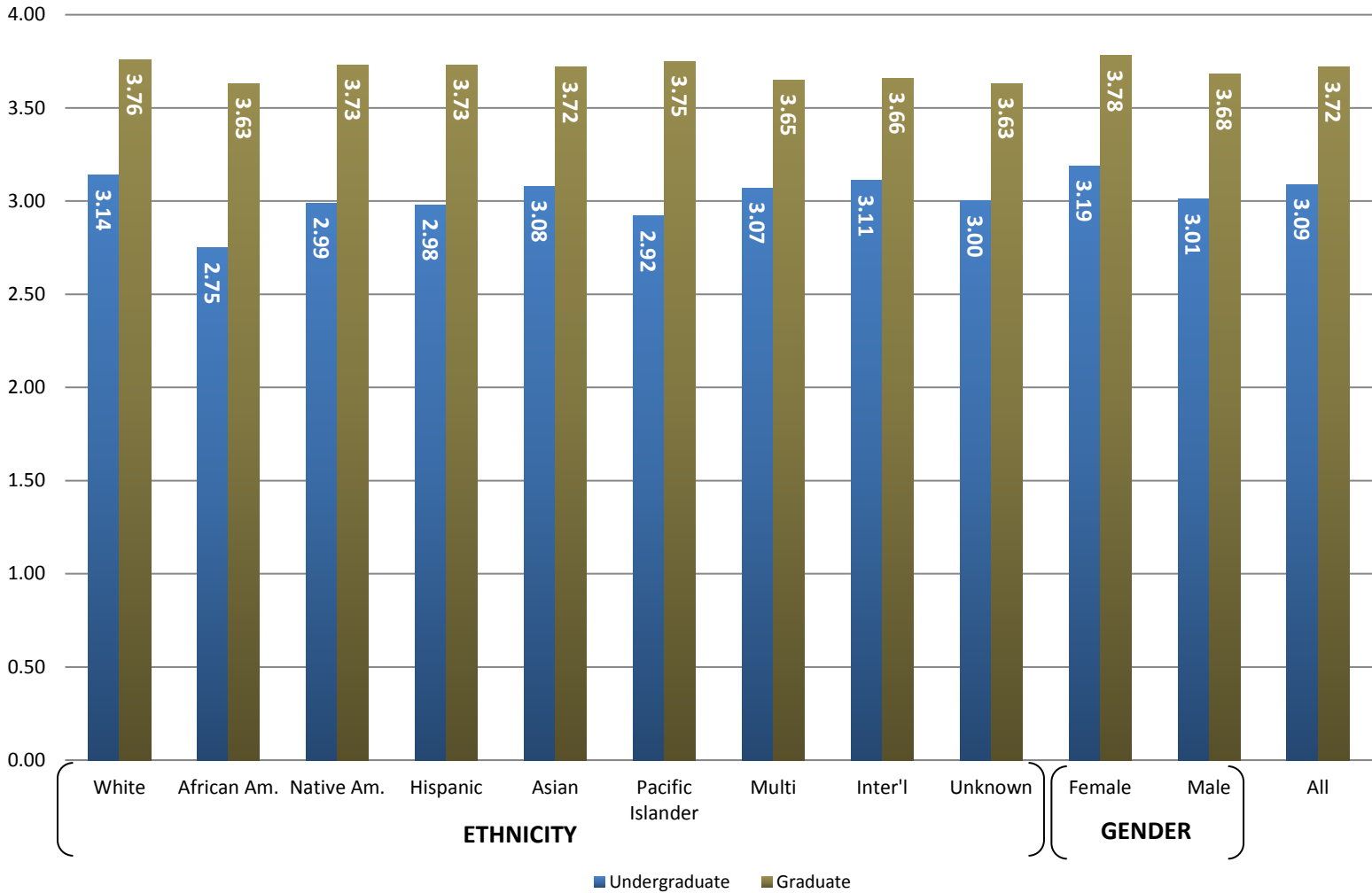
**RANK IN HIGH SCHOOL CLASS BY NUMBER OF NEW FRESHMEN & PERCENT IN EACH RANK
OKLAHOMA STATE UNIVERSITY
FALL SEMESTER 2016**



Rank	Number	Cumulative Number	Percent	Cumulative Percent
Top 5%	540	540	15.25%	15.25%
>5%-10%	360	900	10.17%	25.42%
>10%-15%	348	1,248	9.83%	35.24%
>15%-20%	340	1,588	9.60%	44.85%
>20%-25%	318	1,906	8.98%	53.83%
>25%-30%	313	2,219	8.84%	62.67%
>30%-35%	231	2,450	6.52%	69.19%
>35%-40%	199	2,649	5.62%	74.81%
>40%-45%	199	2,848	5.62%	80.43%
>45%-50%	139	2,987	3.93%	84.35%
>50%-55%	133	3,120	3.76%	88.11%
>55%-60%	103	3,223	2.91%	91.02%
>60%-65%	110	3,333	3.11%	94.13%
>65%-70%	84	3,417	2.37%	96.50%
>70%-75%	46	3,463	1.30%	97.80%
>75%-80%	30	3,493	0.85%	98.64%
Lower 20%	48	3,541	1.36%	100.0%

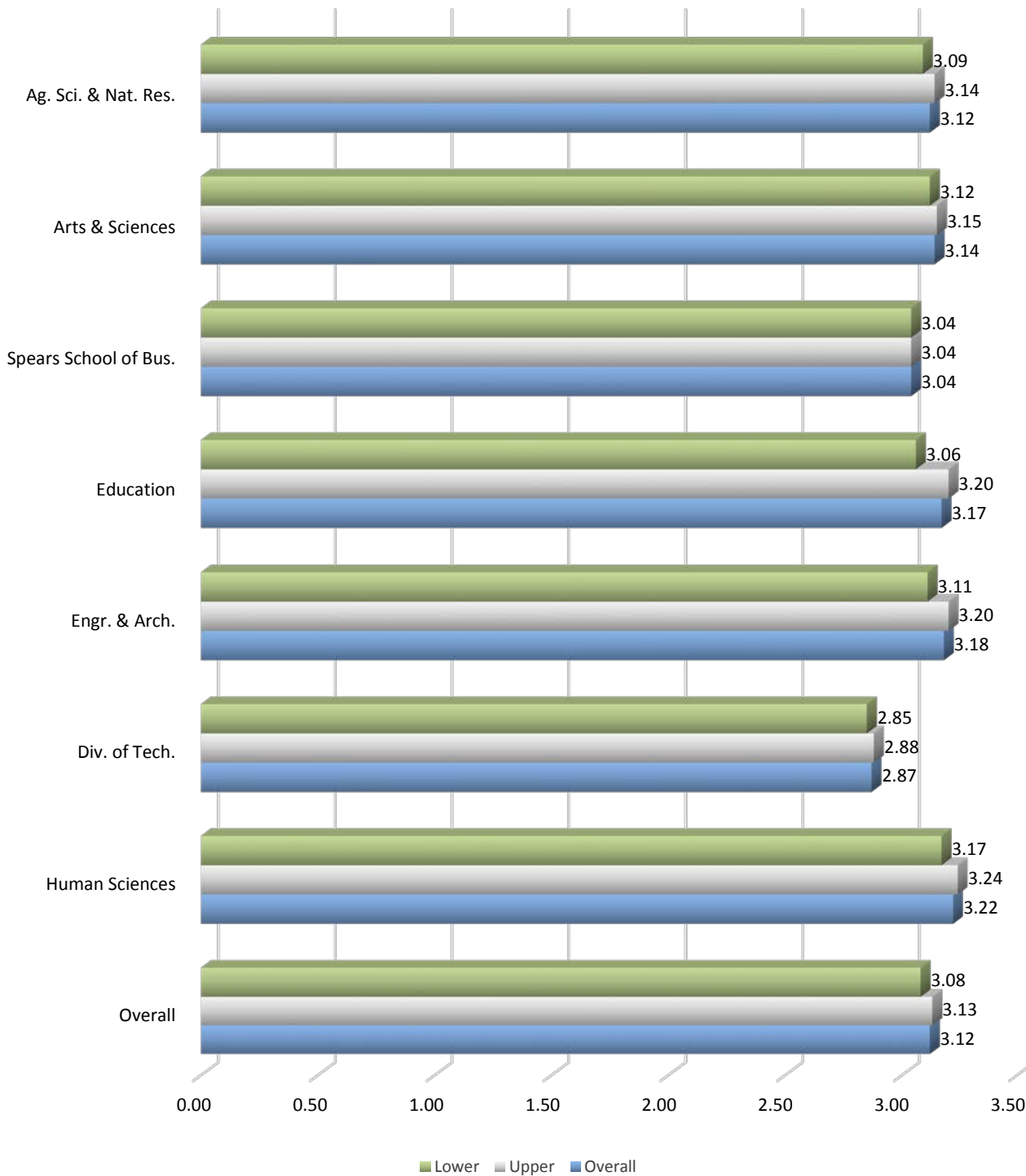
Note: 620 new freshmen (including international, home schooled, and adult admission students) did not supply a high school rank.

AVERAGE GRADUATE/RETENTION GRADE POINT AVERAGE BY ETHNICITY AND GENDER
OKLAHOMA STATE UNIVERSITY
FALL SEMESTER 2016



Note: The data presented above includes 15,126 undergraduates and 3,023 graduates for whom a GPA was reported. This chart excludes professional students, new transfers, and new freshmen, but includes students at OSU-Tulsa.

**AVERAGE GRADUATE/RETENTION GRADE POINT AVERAGE
OF UNDERGRADUATE STUDENTS BY COLLEGE AND DIVISION
OKLAHOMA STATE UNIVERSITY
FALL SEMESTER 2016**



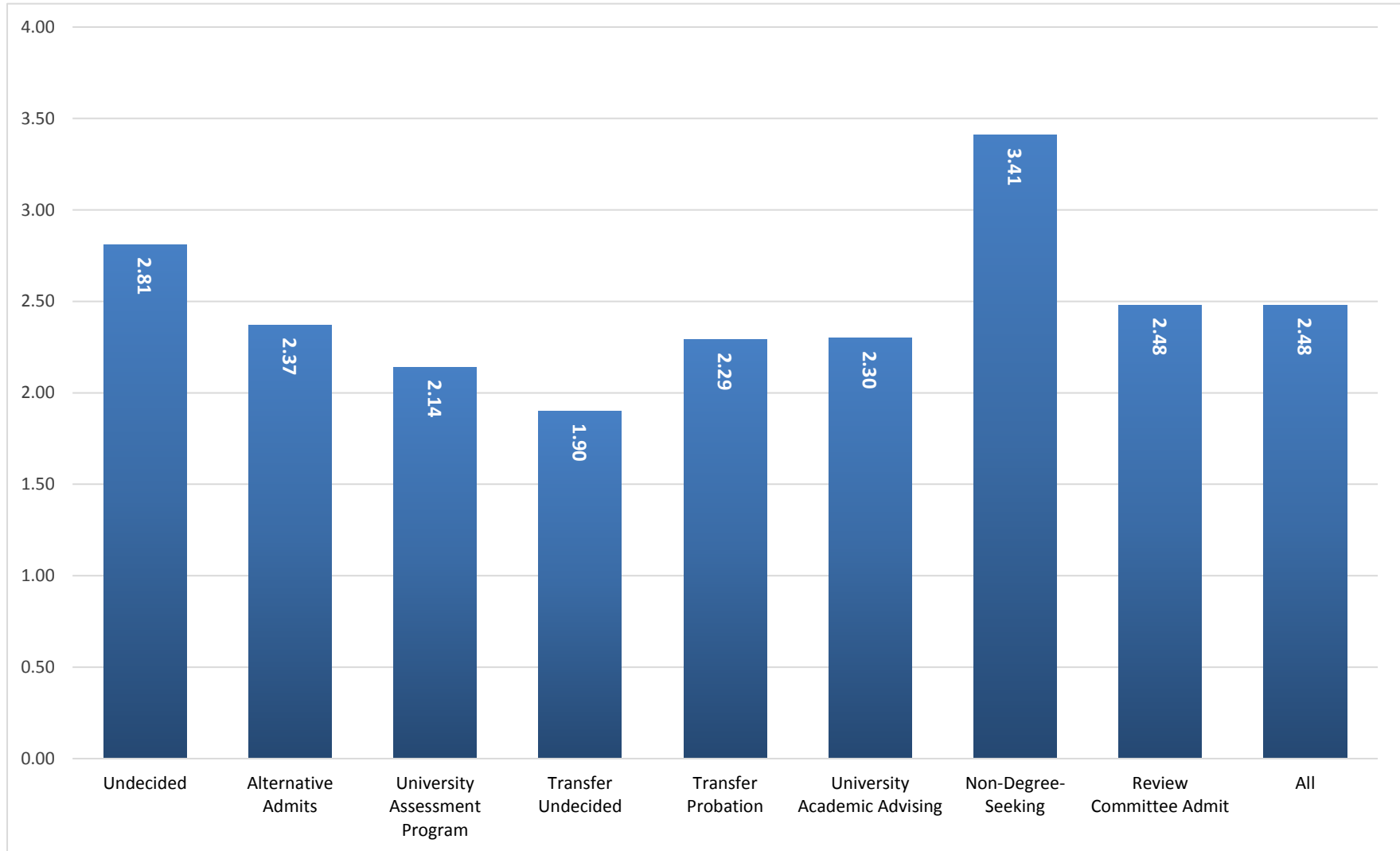
Note: This chart includes 14,562 undergraduates enrolled for Fall 2016 for whom a GPA was reported. This chart excludes professional students, new freshmen, new transfers, and University College, but includes students enrolled at OSU-Tulsa.

**AVERAGE GRADUATE/RETENTION GRADE POINT AVERAGE
OF UNIVERSITY COLLEGE ADVISING STUDENTS**

OKLAHOMA STATE UNIVERSITY

FALL SEMESTER 2016

53

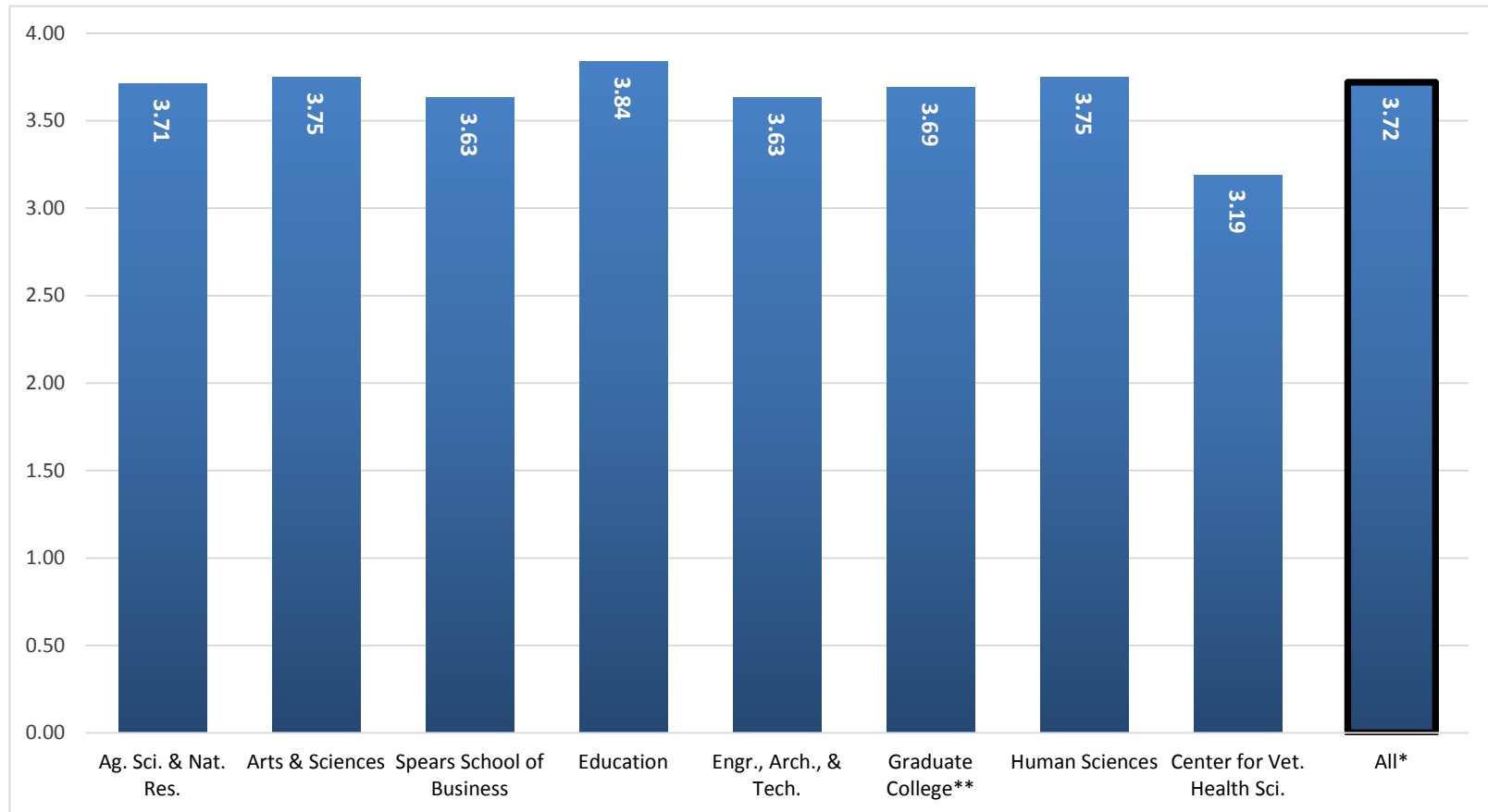


Note: This chart includes 564 students enrolled in University College Advising in the Fall 2016 semester for whom a GPA was reported. □

**AVERAGE GRADUATE/RETENTION GRADE POINT AVERAGE
OF GRADUATE STUDENTS BY COLLEGE**

OKLAHOMA STATE UNIVERSITY

FALL SEMESTER 2016



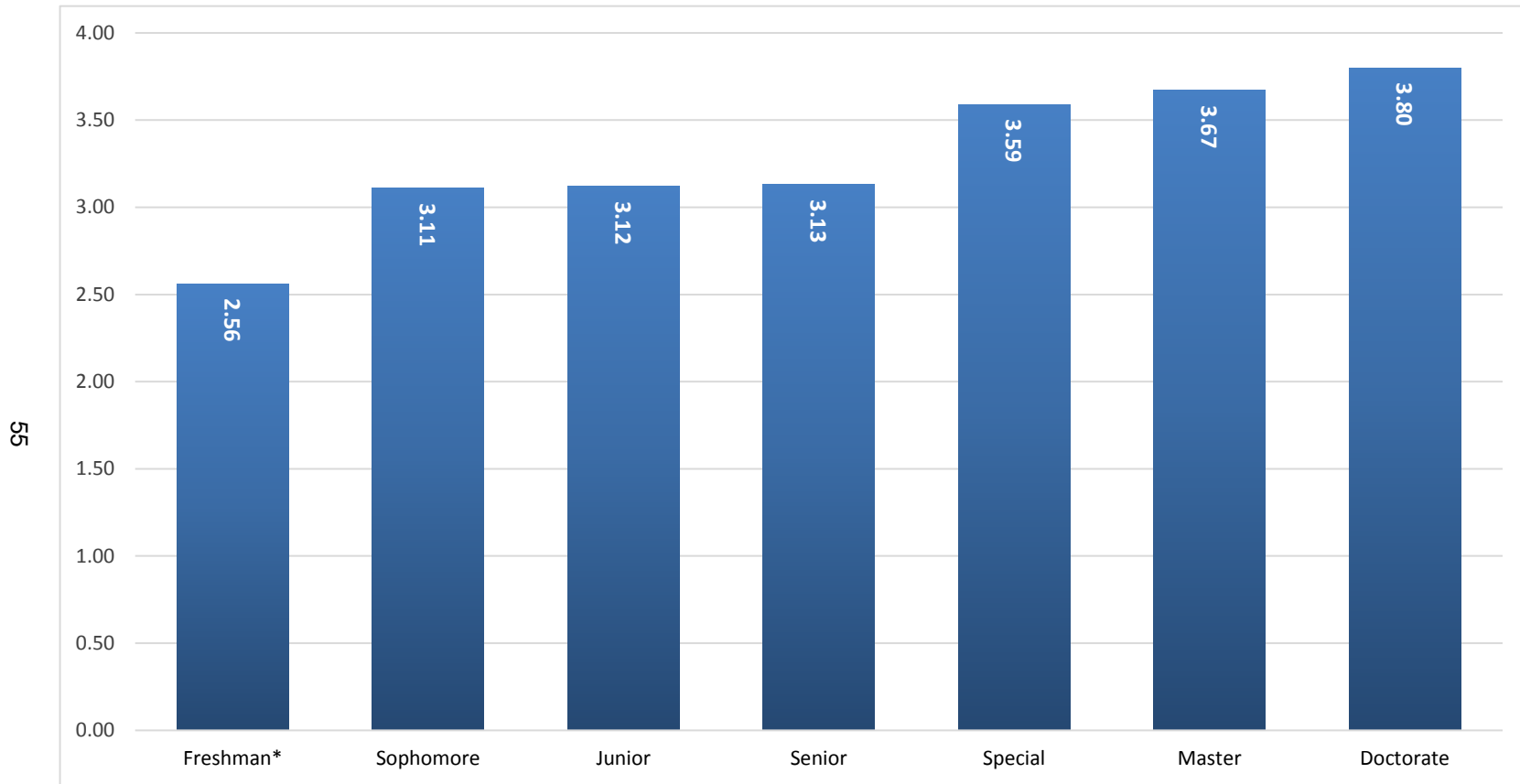
54

*Center for Veterinary Health Sciences professional students are excluded from the overall average.

**Interdisciplinary graduate programs that do not have a specific area of specialization are reported in the Graduate College.

Note: This chart includes 3,023 graduate students and 237 professional students enrolled in the Fall 2016 semester for whom a cumulative GPA was reported. This chart does not include new transfer students but does include students enrolled at OSU-Tulsa.

**AVERAGE GRADUATE/RETENTION GRADE POINT AVERAGE
OF STUDENTS BY CLASS LEVEL
OKLAHOMA STATE UNIVERSITY
FALL SEMESTER 2016**



*Includes students enrolled previously who have earned fewer than 28 semester credit hours. This does not include Fall 2016 new freshmen.

Note: This chart includes 18,149 students enrolled in the Fall 2016 semester for whom a GPA was reported. This chart excludes professional students, new freshmen, and new transfer students, but includes students enrolled at OSU-Tulsa.