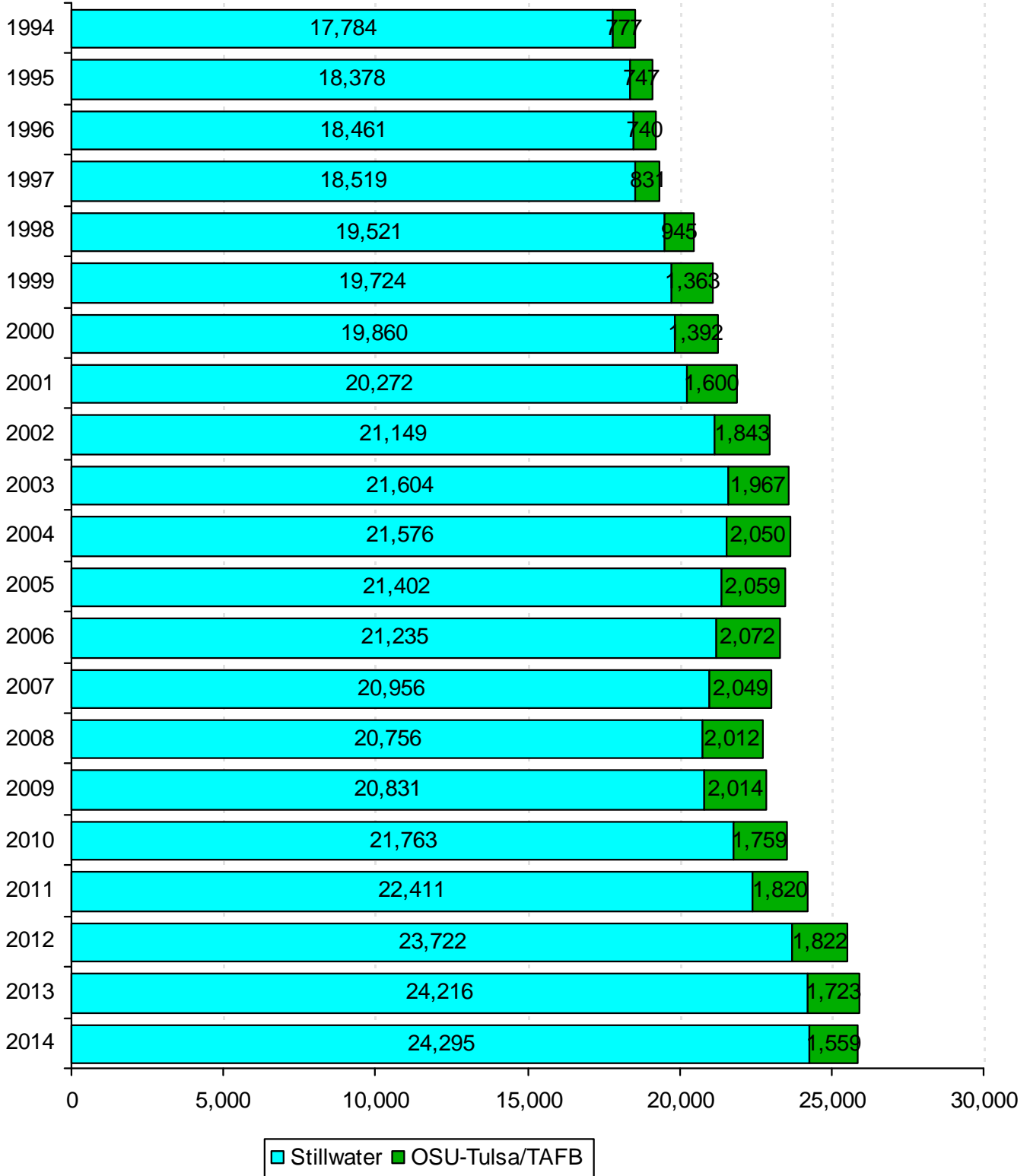


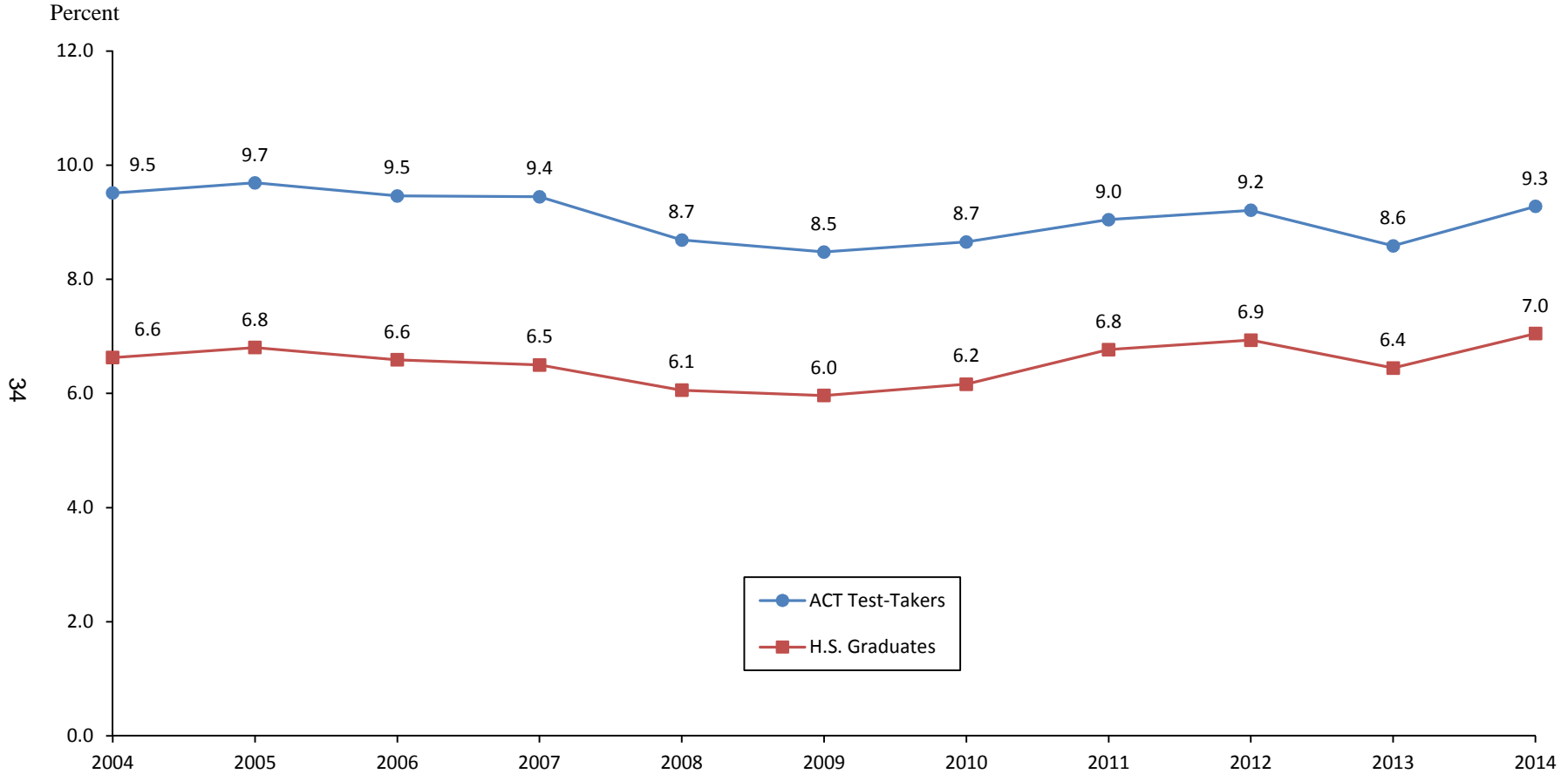
# ENROLLMENT TRENDS



**STILLWATER AND TULSA CAMPUS ENROLLMENT**  
**OKLAHOMA STATE UNIVERSITY**  
**FALL SEMESTERS 1994 THROUGH 2014**



**OKLAHOMA STATE UNIVERSITY SHARE OF THE MARKET  
RATIO OF BEGINNING RESIDENT FRESHMEN  
TO OKLAHOMA HIGH SCHOOL SPRING GRADUATES AND ACT TEST-TAKERS  
OKLAHOMA STATE UNIVERSITY  
FALL SEMESTERS 2004-2014**



*Note:* Total Oklahoma high school graduates for 2014 = 37,748; total Oklahoma ACT test-takers = 28,682. The beginning resident freshman count for all years include OSU-Tulsa students, but excludes non-degree-seeking and first time concurrent high school resident students. (See Page 43). 2013 and 2014 ratios of Oklahoma High School Graduates are based on projected numbers of graduates.

*Sources:* Oklahoma High School Graduates-Projections, Oklahoma State Regents for Higher Education  
ACT Profile Report – State, Graduating Class 2014, Oklahoma

**ENROLLMENT BY TYPE OF ADMISSION  
OKLAHOMA STATE UNIVERSITY  
FALL SEMESTERS 2004 THROUGH 2014**

Fall	New Freshmen*	% Inc / Dec	Continuing	% Inc / Dec	Readmission	% Inc / Dec	New Transfer	% Inc / Dec	Non-Degree	% Inc / Dec	Concurrent	% Inc / Dec	Total	% Inc / Dec
2004	3,264	-4.8%	16,274	1.0%	874	-7.1%	2,764	3.3%	87	61.1%	67	-1.5%	<b>23,330</b>	<b>0.2%</b>
2005	3,315	1.6%	16,180	-0.6%	780	-10.8%	2,754	-0.4%	80	-8.0%	56	-16.4%	<b>23,165</b>	<b>-0.7%</b>
2006	3,236	-2.4%	16,189	0.1%	648	-16.9%	2,789	1.3%	57	-28.8%	80	42.9%	<b>22,999</b>	<b>-0.7%</b>
2007	3,209	-0.8%	16,016	-1.1%	590	-9.0%	2,715	-2.7%	69	21.1%	94	17.5%	<b>22,693</b>	<b>-1.3%</b>
2008	3,073	-4.2%	15,812	-1.3%	621	5.3%	2,658	-2.1%	192	178.3%	93	-1.1%	<b>22,449</b>	<b>-1.1%</b>
2009	3,148	2.4%	15,564	-1.6%	709	14.2%	2,852	7.3%	164	-14.6%	79	-15.1%	<b>22,516</b>	<b>0.3%</b>
2010	3,554	12.9%	15,899	2.2%	508	-28.3%	3,005	5.4%	124	-24.4%	88	11.4%	<b>23,178</b>	<b>2.9%</b>
2011	3,896	9.6%	16,315	2.6%	510	0.4%	2,914	-3.0%	146	17.7%	101	14.8%	<b>23,882</b>	<b>3.0%</b>
2012	4,289	10.1%	16,986	4.1%	524	2.7%	3,175	9.0%	130	-11.0%	88	-12.9%	<b>25,192</b>	<b>5.5%</b>
2013	3,872	-9.7%	17,947	5.7%	492	-6.1%	3,046	-4.1%	140	7.7%	93	5.7%	<b>25,590</b>	<b>1.6%</b>
2014	4,057	4.8%	17,948	0.0%	484	-1.6%	2,787	-8.5%	171	22.1%	69	-25.8%	<b>25,516</b>	<b>-0.3%</b>

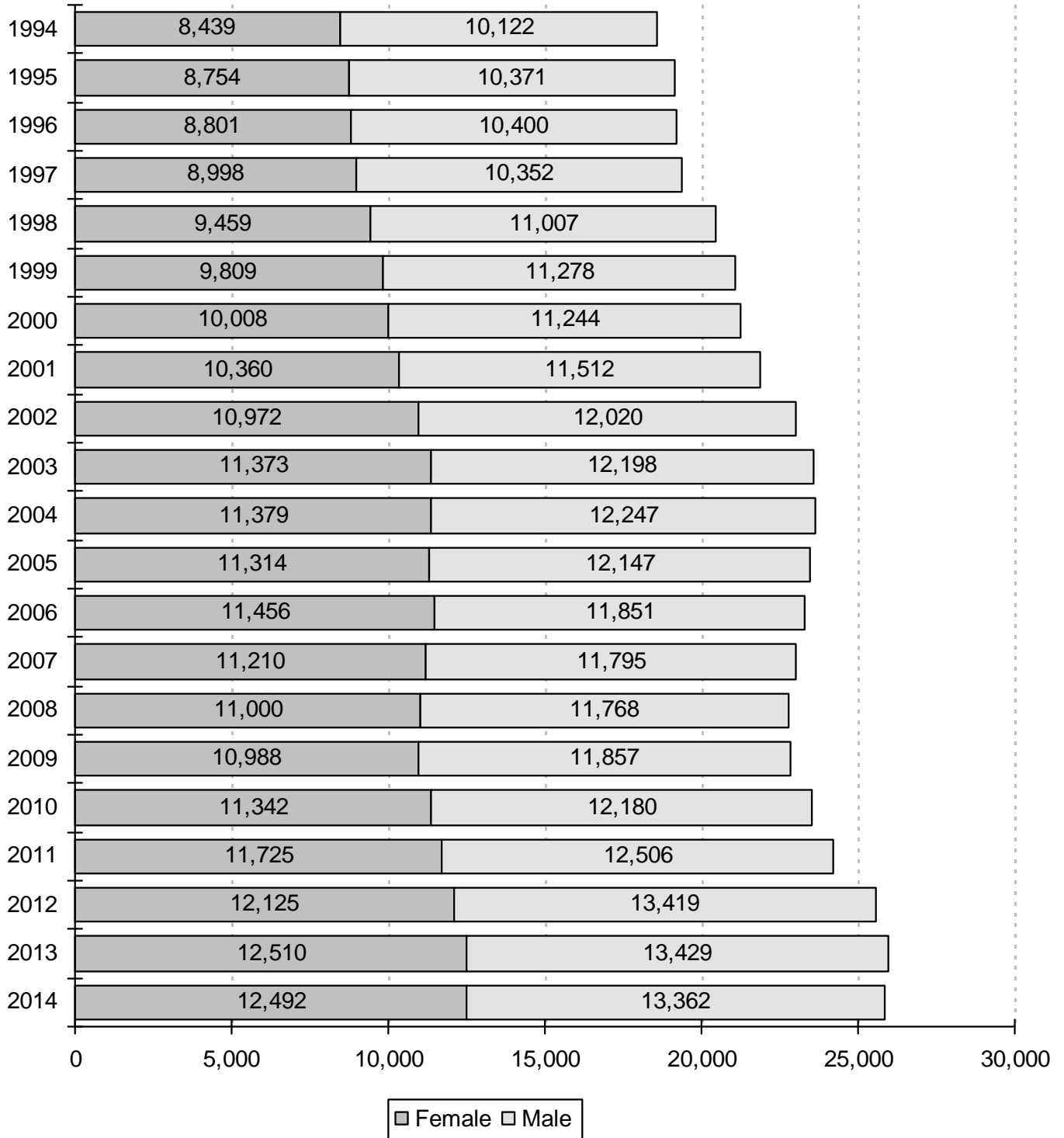
*Note:* This table excludes 338 professional students for Fall 2014, but does include OSU-Tulsa figures for all years listed.

The percentage increase or decrease in enrollment between two semesters is shown in the "% Inc / Dec" column. Example:  
There was a 5.7% increase in enrollment of continuing students from Fall 2012 to Fall 2013.

\* New freshmen counts exclude concurrent high school students and non-degree-seeking students for all years listed.

Student Profile books prior to Fall 2006 include new concurrent high school students in the new freshmen counts.

**ENROLLMENT BY GENDER**  
**OKLAHOMA STATE UNIVERSITY**  
**FALL SEMESTERS 1994 THROUGH 2014**



*Note:* This chart includes professional students and OSU-Tulsa students for all years listed. Hence, these figures will not match the figures in the Student Profile books prior to 2003.

**ENROLLMENT BY CLASSIFICATION  
OKLAHOMA STATE UNIVERSITY  
FALL SEMESTERS 1994 THROUGH 2014**

Year	Freshmen	Sophomores	Juniors	Seniors	Special Undergrads	Graduates	Professional	On-Campus Total	Off-Campus OSU-T & TAFB	Grand Total
1994	3,187	3,034	3,612	4,215	41	3,424	271	17,784	777	18,561
1995	3,446	3,040	3,646	4,273	34	3,664	275	18,378	747	19,125
1996	3,427	3,226	3,508	4,311	47	3,658	284	18,461	740	19,201
1997	3,378	3,308	3,683	4,168	68	3,625	289	18,519	831	19,350
1998	3,535	3,464	3,874	4,379	70	3,902	297	19,521	945	20,466
1999	4,068	3,543	3,923	4,235	45	3,616	294	19,724	1,363	21,087
2000	4,148	3,765	3,834	4,339	46	3,436	292	19,860	1,392	21,252
2001	4,361	3,886	3,925	4,234	51	3,526	289	20,272	1,600	21,872
2002	4,473	3,944	4,115	4,458	49	3,818	292	21,149	1,843	22,992
2003	4,649	4,083	4,197	4,548	14	3,816	297	21,604	1,967	23,571
2004	4,462	4,056	4,266	4,604	105	3,787	296	21,576	2,050	23,626
2005	4,325	4,035	4,391	4,736	97	3,522	296	21,402	2,059	23,461
2006	4,143	4,099	4,383	4,658	109	3,535	308	21,235	2,072	23,307
2007	4,034	3,977	4,262	4,602	133	3,636	312	20,956	2,049	23,005
2008	3,803	3,795	4,280	4,517	241	3,801	319	20,756	2,012	22,768
2009	3,905	3,598	4,134	4,653	210	4,002	329	20,831	2,014	22,845
2010	4,289	3,700	4,123	4,709	186	4,412	344	21,763	1,759	23,522
2011	4,626	3,986	4,288	4,721	229	4,212	349	22,411	1,820	24,231
2012	5,088	4,237	4,611	4,862	202	4,370	352	23,722	1,822	25,544
2013	4,591	4,617	4,699	5,296	198	4,466	349	24,216	1,723	25,939
2014	4,790	4,426	5,092	5,261	211	4,177	338	24,295	1,559	25,854

37

Note: Effective 2000, Off-Campus OSU-T & Tinker Air Force Base column reflects OSU-Tulsa enrollment only.

**ENROLLMENT BY ETHNICITY  
OKLAHOMA STATE UNIVERSITY  
FALL SEMESTERS 2004 THROUGH 2014**

Fall Semester	White		African American		Native American		Hispanic		Asian		Pacific Islander		Multiracial		International		Unknown		Total
	Number	%	Number	%	Number	%	Number	%	Number	%	Number	%	Number	%	Number	%	Number	%	
2004	17,943	75.9%	918	3.9%	1,896	8.0%	447	1.9%	389	1.6%	N/A	N/A	N/A	N/A	2,033	8.6%	N/A	N/A	<b>23,626</b>
2005	17,894	76.3%	917	3.9%	1,973	8.4%	523	2.2%	388	1.7%	N/A	N/A	N/A	N/A	1,766	7.5%	N/A	N/A	<b>23,461</b>
2006	17,769	76.2%	959	4.1%	1,990	8.5%	533	2.3%	411	1.8%	N/A	N/A	N/A	N/A	1,645	7.1%	N/A	N/A	<b>23,307</b>
2007	17,443	75.8%	923	4.0%	1,993	8.7%	525	2.3%	388	1.7%	N/A	N/A	N/A	N/A	1,733	7.5%	N/A	N/A	<b>23,005</b>
2008	17,172	75.4%	930	4.1%	1,964	8.6%	566	2.5%	386	1.7%	N/A	N/A	N/A	N/A	1,750	7.7%	N/A	N/A	<b>22,768</b>
2009	17,297	75.7%	929	4.1%	1,915	8.4%	555	2.4%	363	1.6%	N/A	N/A	N/A	N/A	1,786	7.8%	N/A	N/A	<b>22,845</b>
2010	17,599	74.8%	1,029	4.4%	2,032	8.6%	594	2.5%	399	1.7%	N/A	N/A	N/A	N/A	1,869	7.9%	N/A	N/A	<b>23,522</b>
2011*	17,109	70.6%	1,066	4.4%	1,506	6.2%	930	3.8%	366	1.5%	4	0.0%	1,301	5.4%	1,661	6.9%	288	1.2%	<b>24,231</b>
2012	17,976	70.4%	1,144	4.5%	1,403	5.5%	1,039	4.1%	420	1.6%	7	0.0%	1,551	6.1%	1,758	6.9%	246	1.0%	<b>25,544</b>
2013	18,015	69.5%	1,157	4.5%	1,394	5.4%	1,151	4.4%	424	1.6%	9	0.0%	1,638	6.3%	1,941	7.5%	210	0.8%	<b>25,939</b>
2014	17,703	68.5%	1,138	4.4%	1,238	4.8%	1,335	5.2%	417	1.6%	19	0.1%	1,872	7.2%	1,959	7.6%	173	0.7%	<b>25,854</b>

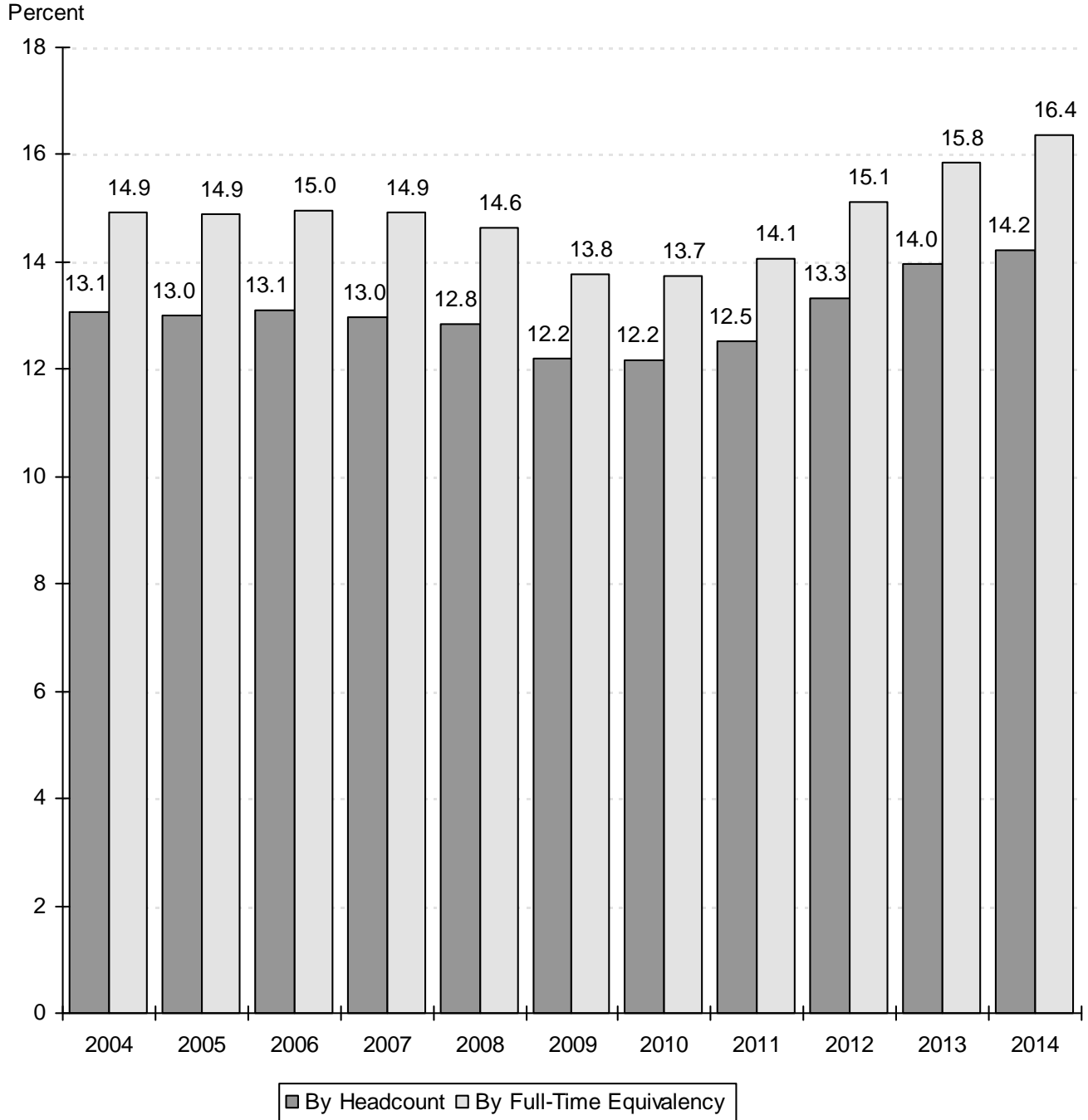
Note: This table includes professional students and OSU-Tulsa students for all years listed. Student Profile books prior to Fall 2003 do not contain OSU-Tulsa students on this page.

\* Starting from 2011, ethnicity codes were expanded to include Pacific Islanders, Multiracial and Unknown.



**OSU ENROLLMENT AS A PERCENT OF TOTAL ENROLLMENT  
IN THE OKLAHOMA STATE SYSTEMS (PUBLIC)**

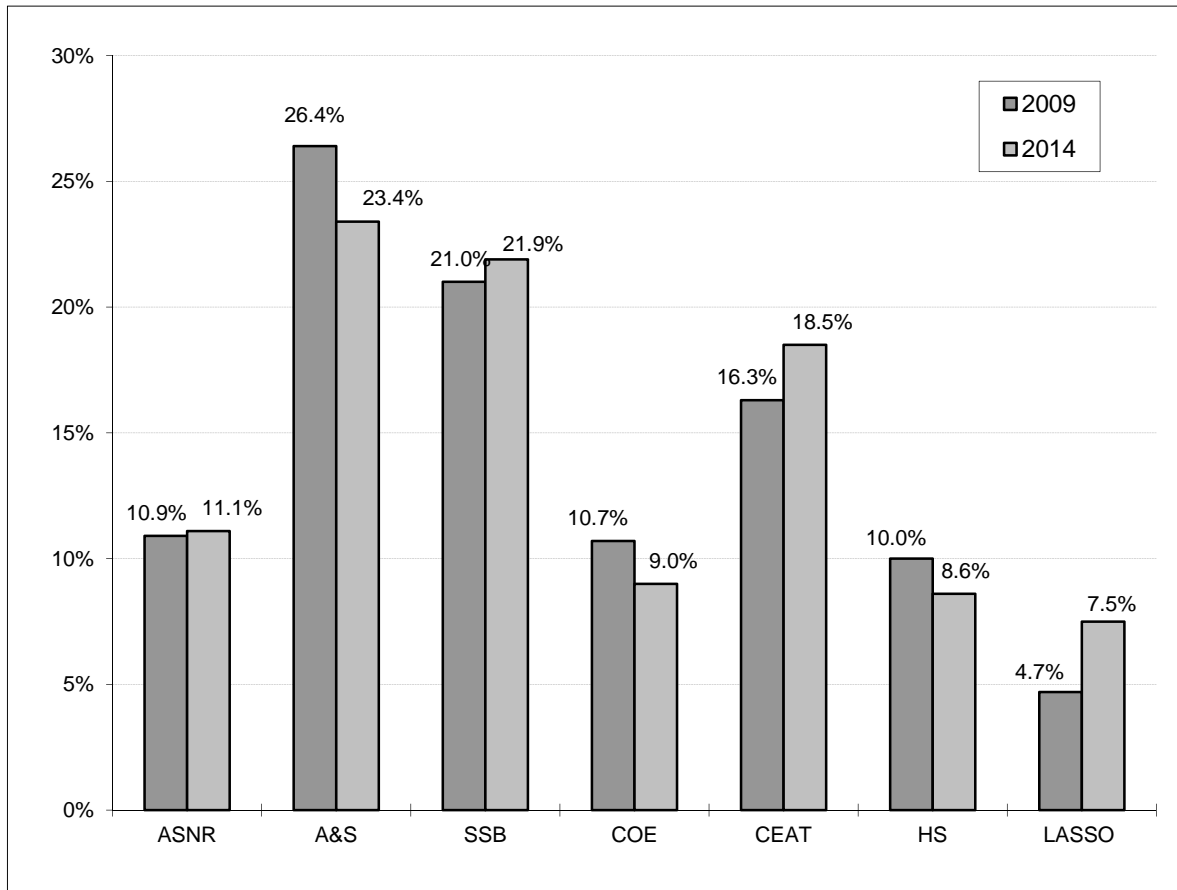
**OKLAHOMA STATE UNIVERSITY  
FALL SEMESTERS 2004 THROUGH 2014**



Source: Preliminary Enrollment Report for Oklahoma Higher Education Fall 2014,  
Oklahoma State Regents for Higher Education.

Note: Total Enrollment in the Oklahoma State Systems (Public) excludes interns and residents. Student Profile books prior to Fall 2008 included interns and residents in the total headcount enrollment.

**COMPARISON OF DISTRIBUTION OF UNDERGRADUATE MAJORS BY COLLEGE  
OKLAHOMA STATE UNIVERSITY  
FALL SEMESTERS 2009 AND 2014**



**UNDERGRADUATE MAJORS BY COLLEGE  
OKLAHOMA STATE UNIVERSITY  
FALL SEMESTERS 2009 THROUGH 2014**

Year	Ag. Sci. & Nat. Res.	Arts & Sciences	Spears Sch. of Bus.	Education	Engr., Arch., & Tech.	Human Sciences	LASSO Center	Total
2009	1,937	4,709	3,747	1,919	2,917	1,776	844	<b>17,849</b>
2010	1,974	4,817	3,773	1,896	3,081	1,685	971	<b>18,197</b>
2011	2,093	4,779	3,895	1,870	3,187	1,739	1,446	<b>19,009</b>
2012	2,140	4,884	4,124	1,938	3,484	1,816	1,744	<b>20,130</b>
2013	2,260	4,772	4,362	1,896	3,694	1,817	1,692	<b>20,493</b>
2014	2,315	4,868	4,573	1,867	3,856	1,784	1,558	<b>20,821</b>

Note: Students are reported in the college in which they are enrolled. This page includes students enrolled at OSU-Tulsa. Student Profile books prior to Fall 2003 do not contain OSU-Tulsa students on this page.

**ENROLLMENT CHANGES  
OKLAHOMA STATE UNIVERSITY  
FALL SEMESTERS 2009 AND 2014**

	2009	2014	% Change
<u>UNDERGRADUATE MAJORS</u>			
Agricultural Sciences & Natural Resources	1,937	2,315	19.5%
Arts & Sciences	4,709	4,868	3.4%
Spears School of Business	3,747	4,573	22.0%
Education	1,919	1,867	-2.7%
Engineering, Architecture, & Technology	2,917	3,856	32.2%
Human Sciences	1,776	1,784	0.5%
LASSO Center	844	1,558	84.6%
<u>AGE</u>			
18 & Under	1,846	2,302	24.7%
19	2,840	3,703	30.4%
20	2,956	3,762	27.3%
21	3,168	3,777	19.2%
22	2,782	3,075	10.5%
23-29	6,132	6,119	-0.2%
30-39	1,940	2,018	4.0%
40 & Over	1,181	1,098	-7.0%
<u>CLASSIFICATION</u>			
New Freshmen	3,124	4,009	28.3%
Other Freshmen	801	785	-2.0%
Sophomores*	3,719	4,498	20.9%
Juniors*	4,618	5,458	18.2%
Seniors	5,344	5,831	9.1%
Specials	651	475	-27.0%
Graduates	4,259	4,460	4.7%
Professional	329	338	2.7%
<u>RESIDENT STATUS</u>			
In-State	17,006	17,078	0.4%
Out-of-State	4,053	6,817	68.2%
International	1,786	1,959	9.7%
<u>ETHNICITY</u>			
White	17,297	17,703	2.3%
African American	929	1,138	22.5%
Native American	1,915	1,238	-35.4%
Hispanic	555	1,335	140.5%
Asian	363	417	14.9%
Pacific Islander	N/A	19	N/A
Multiracial	N/A	1,872	N/A
International	1,786	1,959	9.7%
Unknown	N/A	173	N/A
<u>GENDER</u>			
Female	10,988	12,492	13.7%
Male	11,857	13,362	12.7%
<b>OVERALL ENROLLMENT</b>	<b>22,845</b>	<b>25,854</b>	<b>13.2%</b>

Note: This table includes professional students and OSU-Tulsa students.

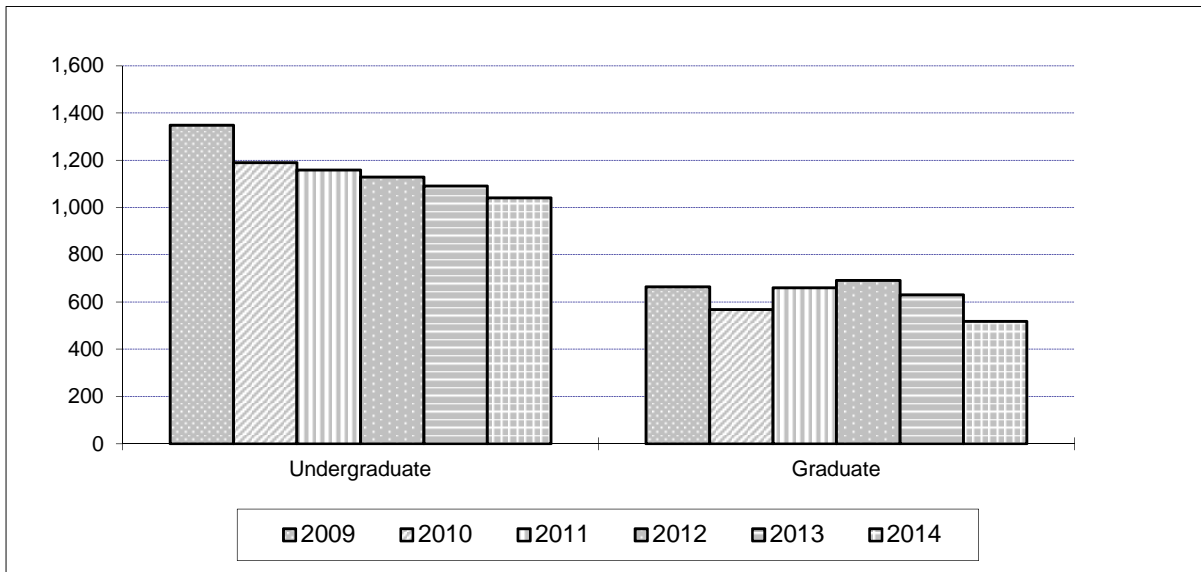
Student Profile books prior to Fall 2003 do not contain OSU-Tulsa students on this page.

Student Profile books prior to Fall 2003 include non-degree-seeking new freshmen in the New Freshmen counts.

Student Profile books prior to Fall 2006 include new concurrent high school students in the New Freshmen counts.

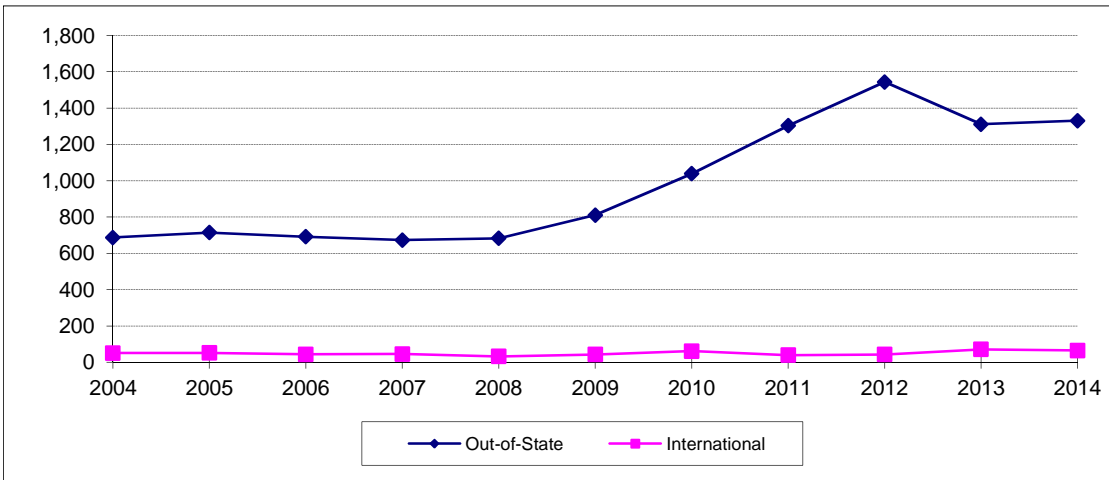
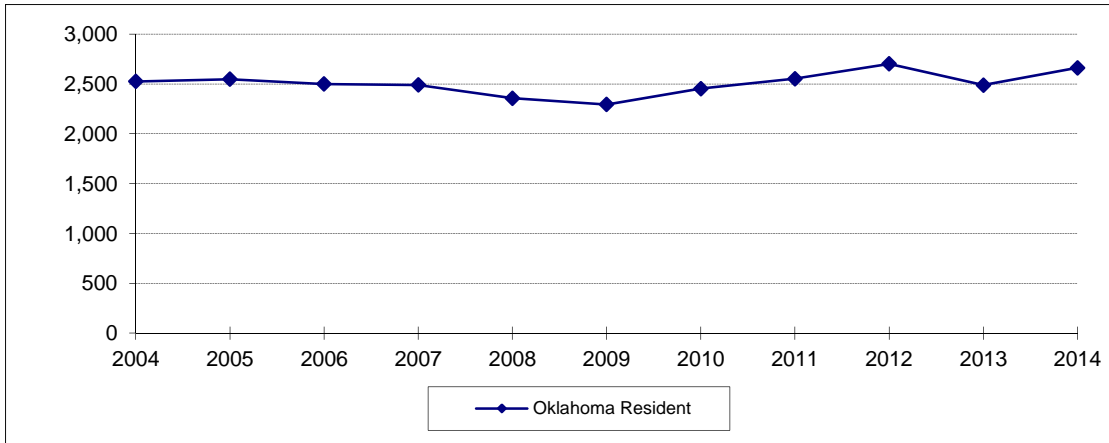
\* 46 sophomores and 2 juniors for 2014 and 23 sophomores and 1 junior for 2009 are in their first year of college and thus listed in other tables as new freshmen.

**ENROLLMENT CHANGES  
OKLAHOMA STATE UNIVERSITY AT TULSA  
FALL SEMESTERS 2009 THROUGH 2014**



Classification	2009	2010	2011	2012	2013	2014	% Change 2013 to 2014
<b>Undergraduate</b>	<b>1,349</b>	<b>1,190</b>	<b>1,159</b>	<b>1,130</b>	<b>1,092</b>	<b>1,041</b>	<b>-4.7%</b>
Freshman	20	3	4	3	4	4	0.0%
Sophomore	121	77	67	75	74	72	-2.7%
Junior	484	442	405	416	393	366	-6.9%
Senior	691	642	665	620	586	570	-2.7%
Special	33	26	18	16	35	29	-17.1%
<b>Graduate</b>	<b>665</b>	<b>569</b>	<b>661</b>	<b>692</b>	<b>631</b>	<b>518</b>	<b>-17.9%</b>
Special	164	119	121	131	93	75	-19.4%
Master	381	329	418	452	421	344	-18.3%
Doctorate	120	121	122	109	117	99	-15.4%
<b>Grand Total</b>	<b>2,014</b>	<b>1,759</b>	<b>1,820</b>	<b>1,822</b>	<b>1,723</b>	<b>1,559</b>	<b>-9.5%</b>

**NEW FRESHMEN ENROLLMENT BY RESIDENCY  
OKLAHOMA STATE UNIVERSITY  
FALL SEMESTERS 2004 THROUGH 2014**



Fall Semester	Oklahoma Resident	Out-of-State	International	Total
2004	2,526	687	51	3,264
2005	2,548	715	52	3,315
2006	2,500	692	44	3,236
2007	2,490	673	46	3,209
2008	2,357	683	33	3,073
2009	2,294	811	43	3,148
2010	2,453	1,039	62	3,554
2011	2,553	1,303	40	3,896
2012	2,702	1,544	43	4,289
2013	2,489	1,311	72	3,872
2014	2,661	1,331	65	4,057

Note: This table includes students at OSU-Tulsa, but does not include non-degree-seeking new freshmen and new concurrent high school students.

Student Profile books prior to Fall 2003 do not include OSU-Tulsa students on this page.

Student Profile books prior to Fall 2006 included new concurrent high school students on this page.

