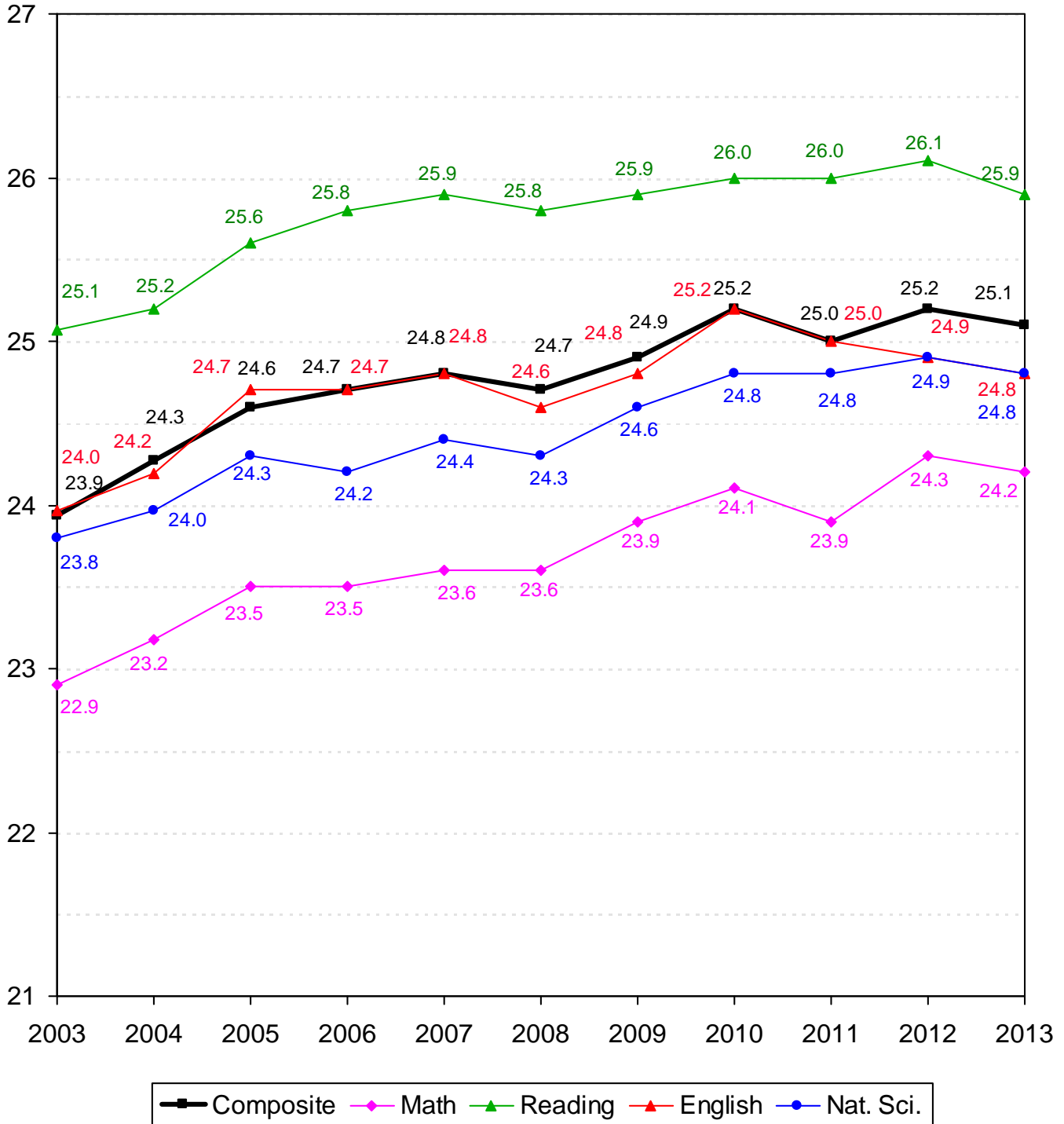


# ACADEMIC INFORMATION



**TEN-YEAR COMPARISON OF ACT SCORES FOR NEW FRESHMEN**  
**OKLAHOMA STATE UNIVERSITY**  
**FALL SEMESTERS 2003 THROUGH 2013**



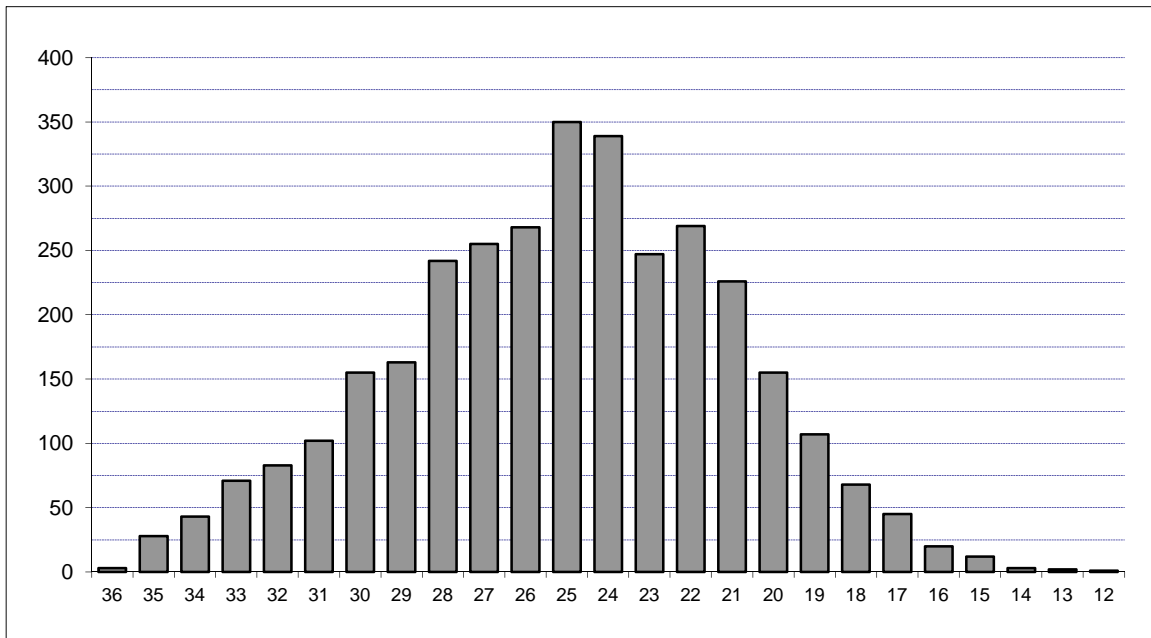
*Note:* Averages reflect the highest value for each subscore that a student received. Beginning in 2003, ACT composite scores are the average of the highest of each subscore received.

**COMPOSITE ACT AND SAT AVERAGES OF NEW FRESHMEN BY COLLEGE  
OKLAHOMA STATE UNIVERSITY  
FALL SEMESTER 2013**

College	ACT		SAT	
	Count	Composite	Count	Composite
Ag. Sciences & Natural Res.	385	25.1	52	1,139
Arts & Sciences	724	25.9	123	1,143
Spears School of Business	450	25.3	92	1,108
Education	189	24.8	32	1,118
Engineering & Architecture	623	27.5	115	1,199
Div. of Technology	51	24.5	22	1,009
Human Sciences	261	24.4	30	1,107
<b>Overall College Average</b>	<b>2,683</b>	<b>25.8</b>	<b>466</b>	<b>1,139</b>
LASSO Center	574	21.7	125	994
<b>Overall Average</b>	<b>3,257</b>	<b>25.1</b>	<b>591</b>	<b>1,108</b>

Note: Composite scores in this table are calculated using the highest subscores obtained for each student. If students have taken both the ACT and the SAT, only the higher score is reported.

**DISTRIBUTION OF NEW FRESHMEN BY COMPOSITE ACT SCORE  
OKLAHOMA STATE UNIVERSITY  
FALL SEMESTER 2013**



Composite ACT Score	Female	Male	Total	Percent	Cumulative Percent
36	2	1	3	0.09%	0.09%
35	10	18	28	0.86%	0.95%
34	12	31	43	1.32%	2.27%
33	30	41	71	2.18%	4.45%
32	37	46	83	2.55%	7.00%
31	44	58	102	3.13%	10.13%
30	82	73	155	4.76%	14.89%
29	89	74	163	5.00%	19.90%
28	124	118	242	7.43%	27.33%
27	136	119	255	7.83%	35.16%
26	137	131	268	8.23%	43.38%
25	181	169	350	10.75%	54.13%
24	186	153	339	10.41%	64.54%
23	147	100	247	7.58%	72.12%
22	150	119	269	8.26%	80.38%
21	144	82	226	6.94%	87.32%
20	95	60	155	4.76%	92.08%
19	64	43	107	3.29%	95.36%
18	40	28	68	2.09%	97.45%
17	24	21	45	1.38%	98.83%
16	13	7	20	0.61%	99.45%
15	10	2	12	0.37%	99.82%
14	1	2	3	0.09%	99.91%
13	2	0	2	0.06%	99.97%
12	0	1	1	0.03%	100.0%
<b>Total</b>	<b>1,760</b>	<b>1,497</b>	<b>3,257</b>	<b>100.0%</b>	<b>100.0%</b>

Note: ACT scores are only included in this table if they represent the highest test score available for the student. If the student's SAT score (converted to an ACT equivalent) is higher, then the ACT score is not included here.

**ACT AND SAT AVERAGES OF NEW FRESHMEN BY ETHNICITY AND GENDER  
OKLAHOMA STATE UNIVERSITY  
FALL SEMESTER 2013**

Ethnicity	ACT		SAT	
	Count	Composite	Count	Composite
White	2,375	25.6	373	1,143
African American	170	21.1	61	963
Native American	188	23.7	6	1,183
Hispanic	169	23.6	63	1,081
Asian	43	25.8	10	1,144
Pacific Islander	-	-	1	1,180
Multiracial	287	24.7	37	1,138
International	10	22.6	38	1,000
Unknown	15	27.6	2	1,010
<b>Gender</b>				
Female	1,760	24.7	261	1,105
Male	1,497	25.5	330	1,111
<b>Total</b>	<b>3,257</b>	<b>25.1</b>	<b>591</b>	<b>1,108</b>

*Note:* Composite scores in this table are calculated using the highest subscores obtained for each student. If students have taken both the ACT and the SAT, only the higher score is reported.

**OKLAHOMA HIGH SCHOOL ACT PARTICIPATION STATISTICS  
OKLAHOMA STATE UNIVERSITY  
2008 THROUGH 2013**

	2008		2009		2010		2011		2012		2013	
High School Graduates in Oklahoma <sup>1</sup>	38,915		38,468		39,808		37,719		38,968		38,616	
Number of Oklahoma H.S. Students Taking ACT <sup>2*</sup>	27,131		27,054		28,343		28,223		29,342		28,988	
Total ACT Scores Received by OSU <sup>2**</sup>	8,135		7,564		7,946		7,836		8,121		7,808	
1st Choice / % of Scores Received	2,942	36.2%	2,671	35.3%	2,908	36.6%	2,983	38.1%	3,227	39.7%	3,061	39.2%
2nd - 6th Choices / % of Scores Received	5,193	63.8%	4,893	64.7%	5,038	63.4%	4,853	61.9%	4,894	60.3%	4,747	60.8%
Applications Received by OSU	6,406		7,561		8,696		9,914		12,056		11,064	
New Freshmen Accepted by OSU	5,702		6,537		7,079		8,099		9,351		8,411	
% of Applications Received	89.0%		86.5%		81.4%		81.7%		77.6%		76.0%	
New Freshmen Enrolled at OSU	3,073		3,148		3,554		3,896		4,289		3,872	
% of Freshmen Accepted	53.9%		48.2%		50.2%		48.1%		45.9%		46.0%	

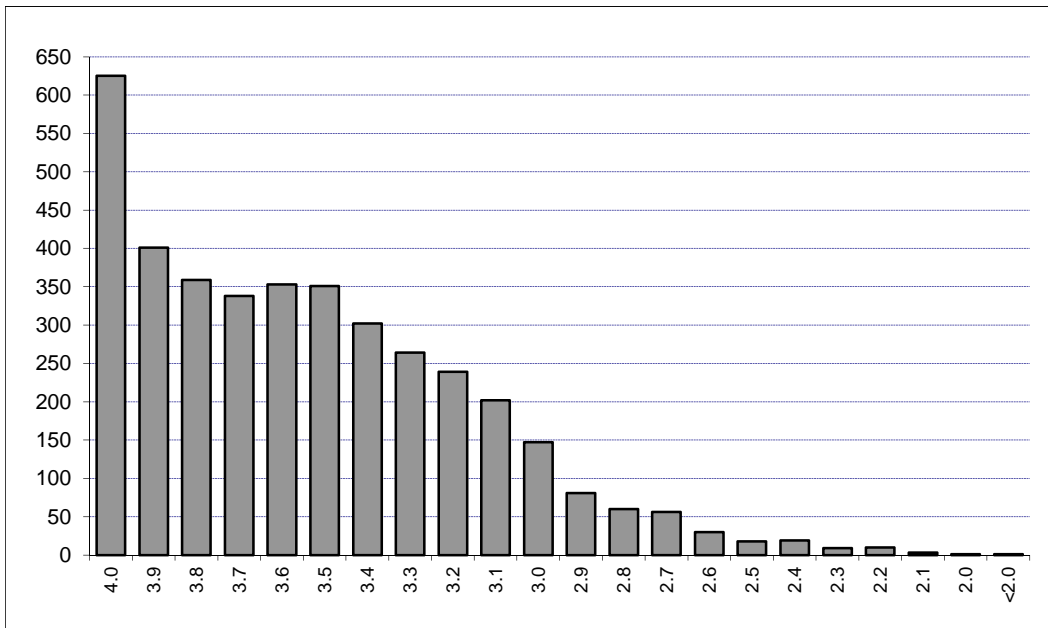
<sup>1</sup>Source - Oklahoma High School Graduates - Projections, Oklahoma State Regents for Higher Education (Projections for 2013)

<sup>2</sup>Source - ACT Profile Report - State, Graduating Class 2013, Oklahoma

\*This includes only Oklahoma high school graduates who took the ACT prior to graduation in the year indicated.

\*\*This includes only those students eligible for college enrollment in the fall semester of the year indicated and does not include multiple ACT scores for any one student. Student Profiles prior to Fall 2003 may include multiple ACT scores per person.

**DISTRIBUTION OF FRESHMEN HIGH SCHOOL GRADE POINT AVERAGES  
OKLAHOMA STATE UNIVERSITY  
FALL SEMESTER 2013**



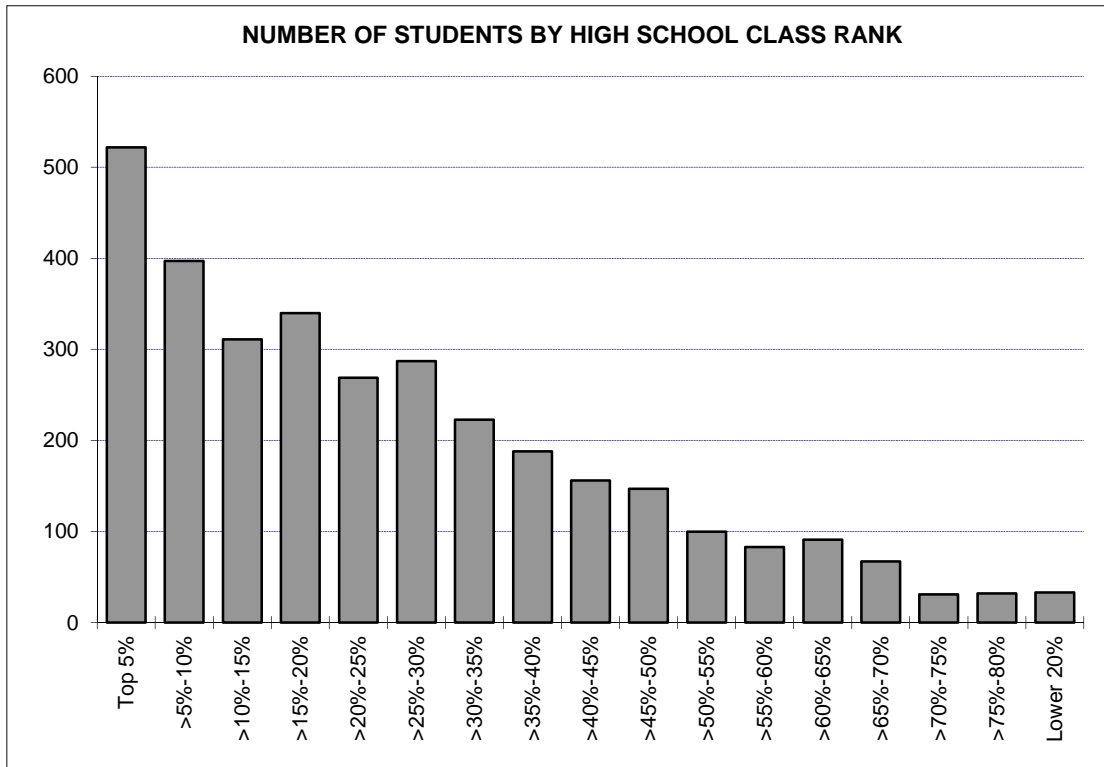
GPA	Number	Cumulative Number	Percent	Cumulative Percent
4.0	625	625	16.15%	16.15%
3.9	401	1,026	10.36%	26.52%
3.8	359	1,385	9.28%	35.80%
3.7	338	1,723	8.74%	44.53%
3.6	353	2,076	9.12%	53.66%
3.5	351	2,427	9.07%	62.73%
3.4	302	2,729	7.81%	70.54%
3.3	264	2,993	6.82%	77.36%
3.2	239	3,232	6.18%	83.54%
3.1	202	3,434	5.22%	88.76%
3.0	147	3,581	3.80%	92.56%
2.9	81	3,662	2.09%	94.65%
2.8	60	3,722	1.55%	96.20%
2.7	56	3,778	1.45%	97.65%
2.6	30	3,808	0.78%	98.42%
2.5	18	3,826	0.47%	98.89%
2.4	19	3,845	0.49%	99.38%
2.3	9	3,854	0.23%	99.61%
2.2	10	3,864	0.26%	99.87%
2.1	3	3,867	0.08%	99.95%
2.0	1	3,868	0.03%	99.97%
<2.0	1	3,869	0.03%	100.0%
<b>Total</b>	<b>3,869</b>	<b>3,869</b>	<b>100.0%</b>	<b>100.0%</b>

Note: 3 new freshmen (including international, home schooled, and adult admission students) did not supply a high school GPA.

The average high school GPA reported was 3.53. The average high school core GPA calculated was 3.60.



**RANK IN HIGH SCHOOL CLASS BY NUMBER OF NEW FRESHMEN & PERCENT IN EACH RANK  
OKLAHOMA STATE UNIVERSITY  
FALL SEMESTER 2013**

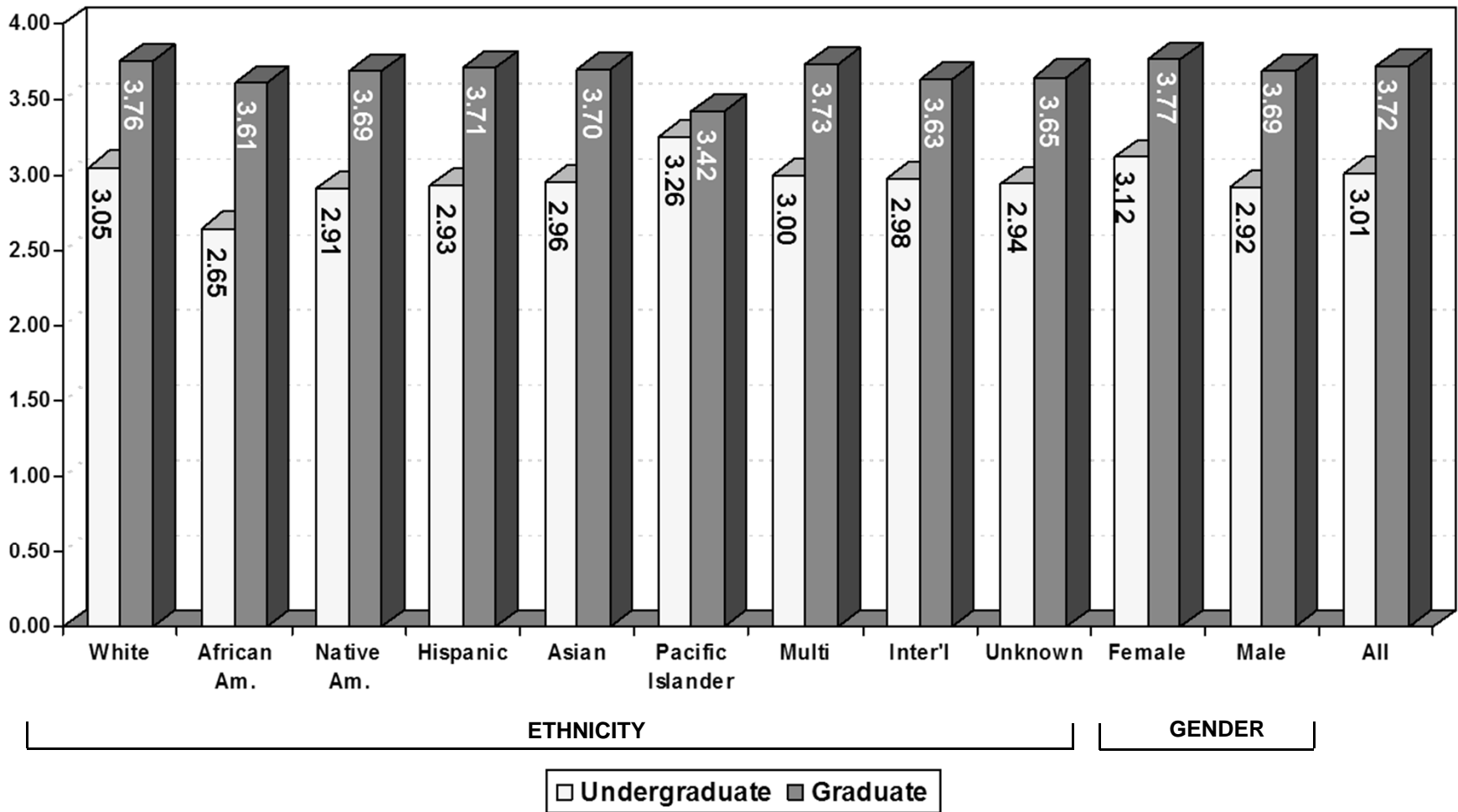


Rank	Number	Cumulative Number	Percent	Cumulative Percent
Top 5%	522	522	15.93%	15.93%
>5%-10%	397	919	12.11%	28.04%
>10%-15%	311	1,230	9.49%	37.53%
>15%-20%	340	1,570	10.38%	47.91%
>20%-25%	269	1,839	8.21%	56.12%
>25%-30%	287	2,126	8.76%	64.88%
>30%-35%	223	2,349	6.81%	71.68%
>35%-40%	188	2,537	5.74%	77.42%
>40%-45%	156	2,693	4.76%	82.18%
>45%-50%	147	2,840	4.49%	86.66%
>50%-55%	100	2,940	3.05%	89.72%
>55%-60%	83	3,023	2.53%	92.25%
>60%-65%	91	3,114	2.78%	95.03%
>65%-70%	67	3,181	2.04%	97.07%
>70%-75%	31	3,212	0.95%	98.02%
>75%-80%	32	3,244	0.98%	98.99%
Lower 20%	33	3,277	1.01%	100.0%

Note: 595 new freshmen (including international, home schooled, and adult admission students) did not supply a high school rank.

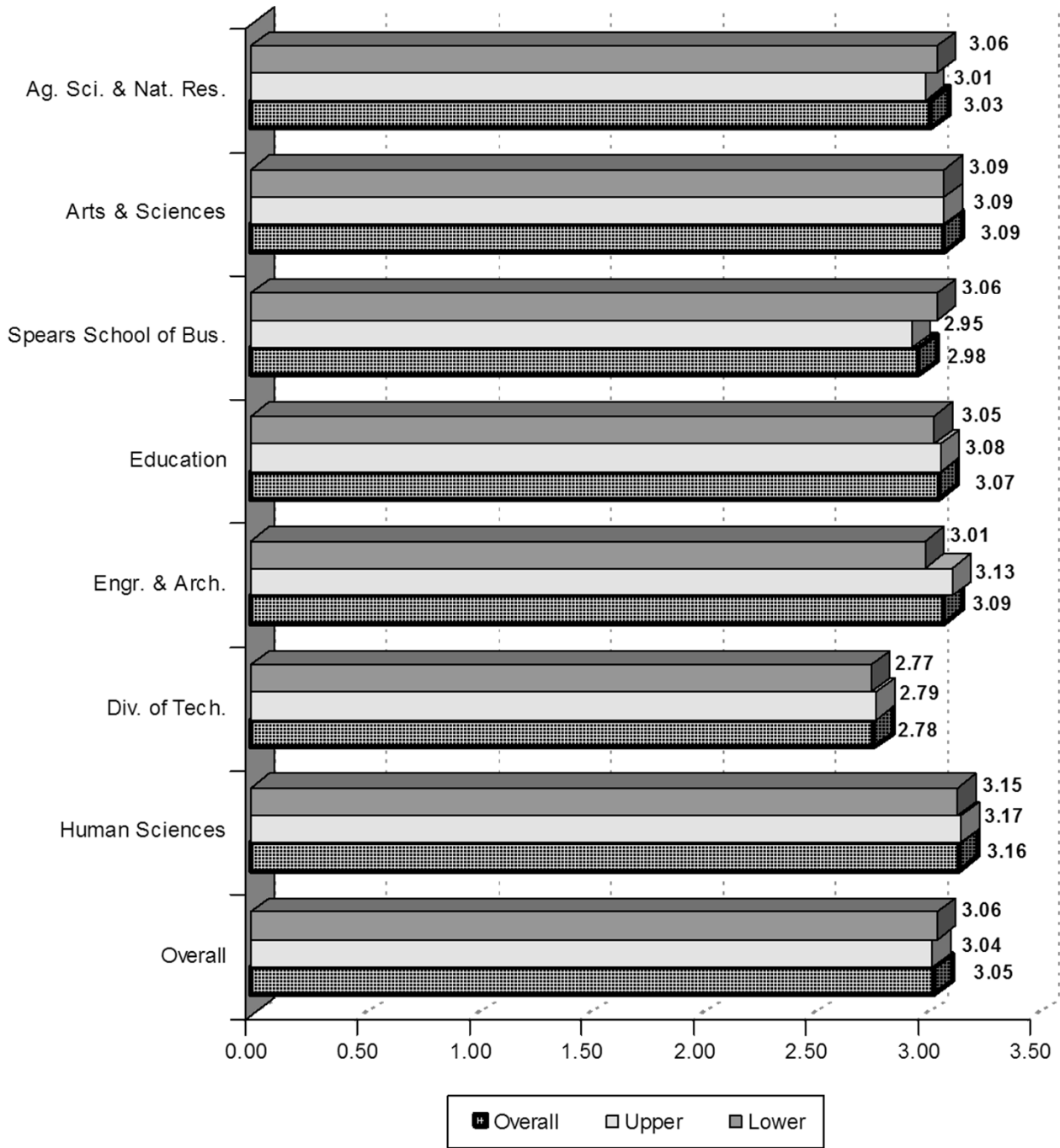
**AVERAGE CUMULATIVE GRADE POINT AVERAGE BY ETHNICITY AND GENDER**  
**OKLAHOMA STATE UNIVERSITY**  
**FALL SEMESTER 2013**

51



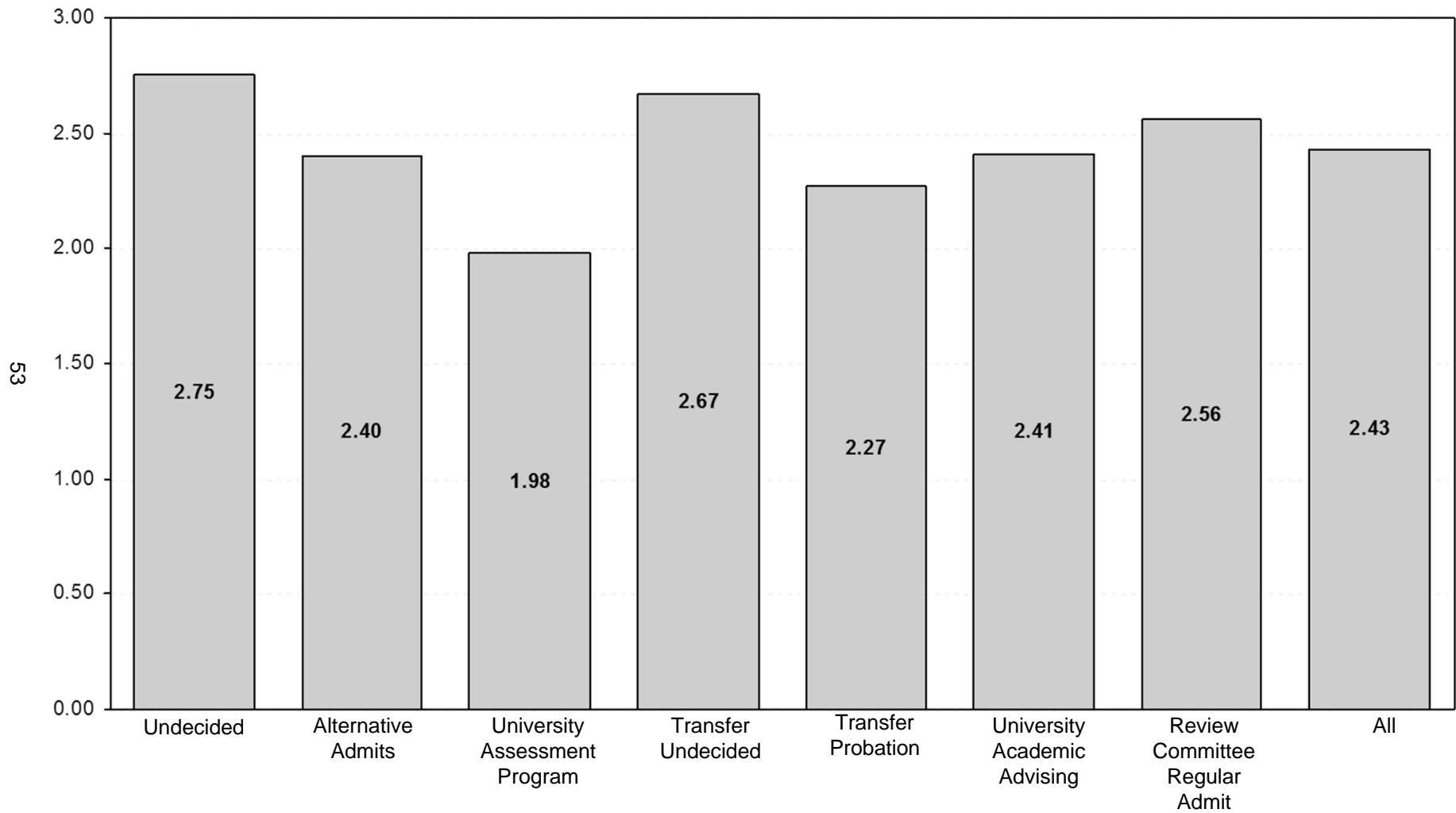
*Note:* The data presented above includes 14,723 undergraduates and 3,639 graduates for whom a cumulative GPA was reported. This chart excludes professional students, new transfers, and new freshmen, but includes students at OSU-Tulsa.

**AVERAGE CUMULATIVE GRADE POINT AVERAGE  
OF UNDERGRADUATE STUDENTS BY COLLEGE AND DIVISION  
OKLAHOMA STATE UNIVERSITY  
FALL SEMESTER 2013**



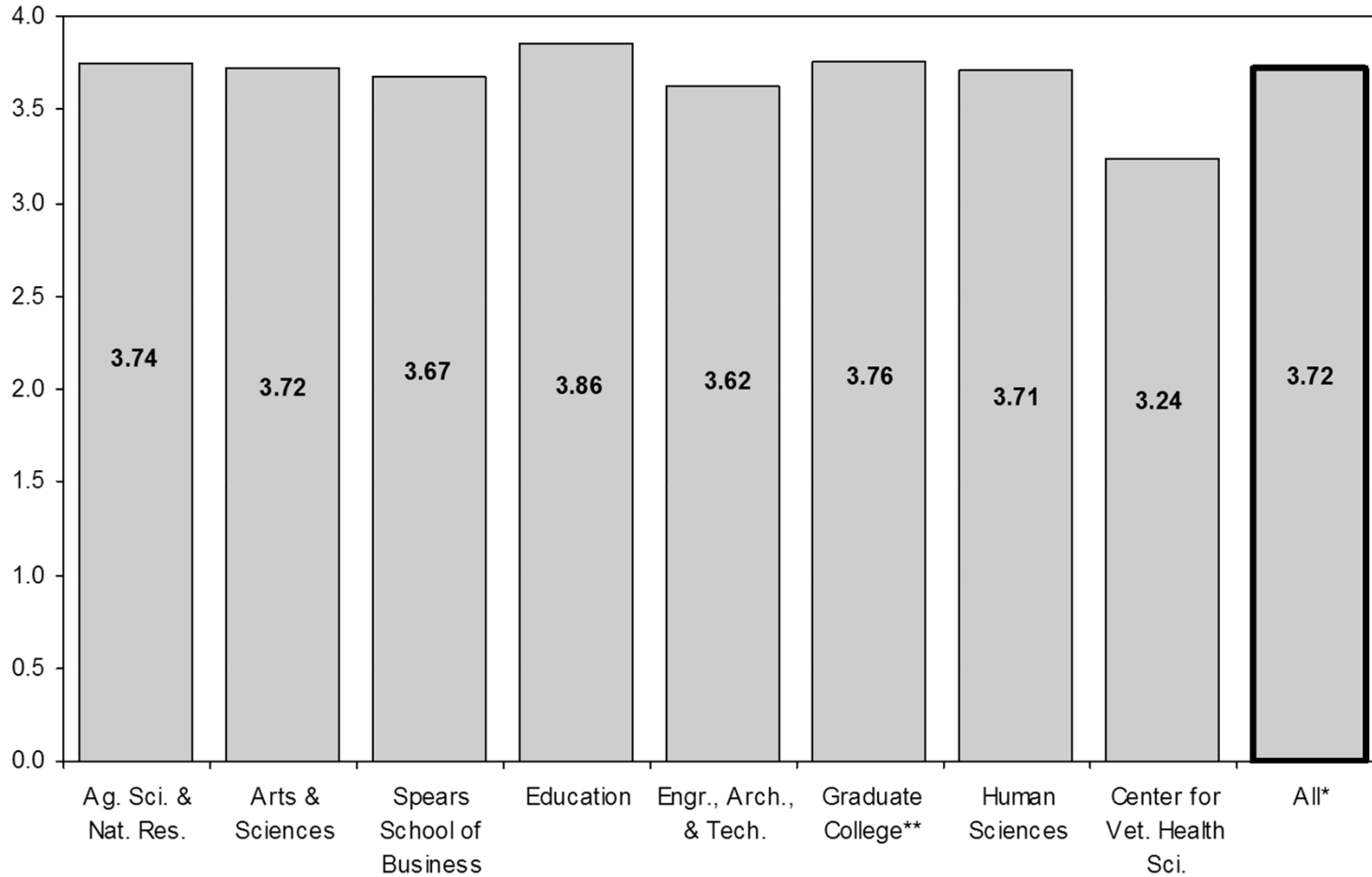
*Note:* This chart includes 13,894 undergraduates enrolled for Fall 2013 for whom a cumulative GPA was reported. This chart excludes professional students, new freshmen, new transfers, and LASSO Center, but includes students enrolled at OSU-Tulsa.

**AVERAGE CUMULATIVE GRADE POINT AVERAGE  
OF LASSO CENTER STUDENTS  
OKLAHOMA STATE UNIVERSITY  
FALL SEMESTER 2013**



*Note:* This chart includes 829 students enrolled in LASSO Center in the Fall 2013 semester for whom a cumulative GPA was reported.

**AVERAGE CUMULATIVE GRADE POINT AVERAGE  
OF GRADUATE STUDENTS BY COLLEGE  
OKLAHOMA STATE UNIVERSITY  
FALL SEMESTER 2013**

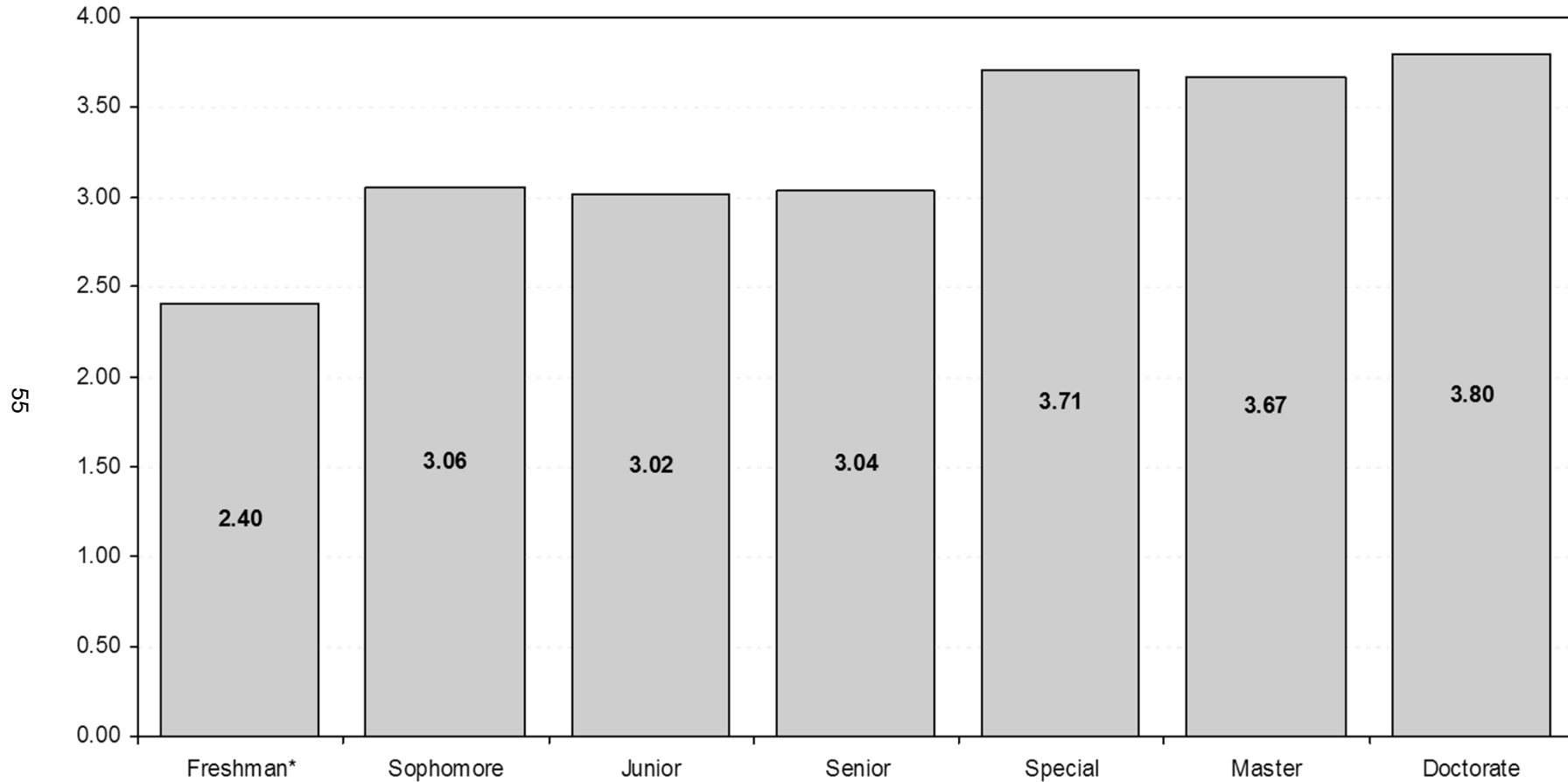


\*Center for Veterinary Health Sciences' professional students are excluded from the overall average.

\*\*Interdisciplinary graduate programs that do not have a specific area of specialization are reported in the Graduate College.

*Note:* This chart includes 3,639 graduate students and 252 professional students enrolled in the Fall 2013 semester for whom a cumulative GPA was reported. This chart does not include new transfer students but does include students enrolled at OSU-Tulsa.

**AVERAGE CUMULATIVE GRADE POINT AVERAGE  
OF STUDENTS BY CLASS LEVEL  
OKLAHOMA STATE UNIVERSITY  
FALL SEMESTER 2013**



\*Includes students enrolled previously who have earned fewer than 28 semester credit hours. This does not include Fall 2013 new freshmen.

Note: This chart includes 18,362 students enrolled in the Fall 2013 semester for whom a cumulative GPA was reported. This chart excludes professional students, new freshmen, and new transfer students, but includes students enrolled at OSU-Tulsa.