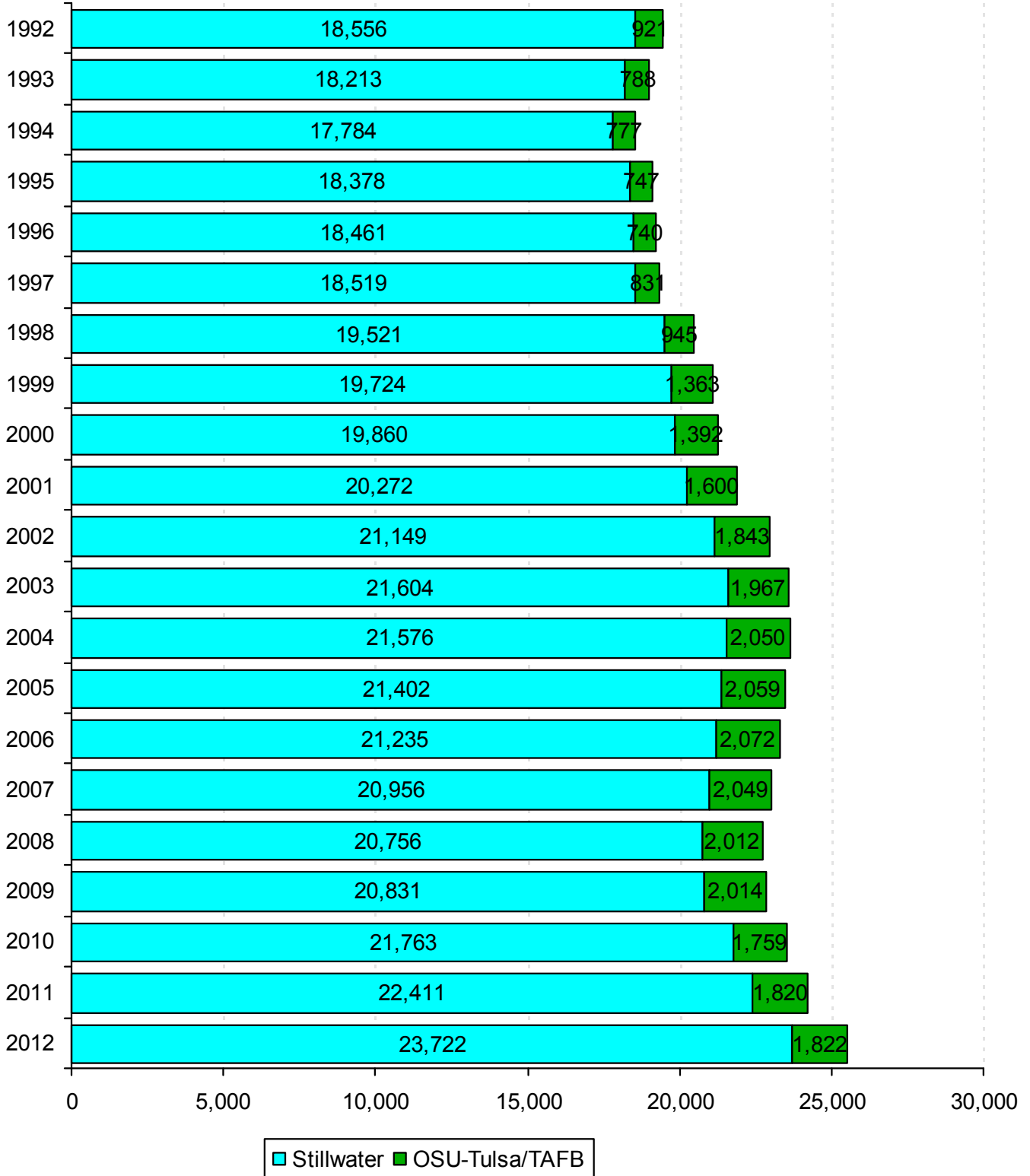


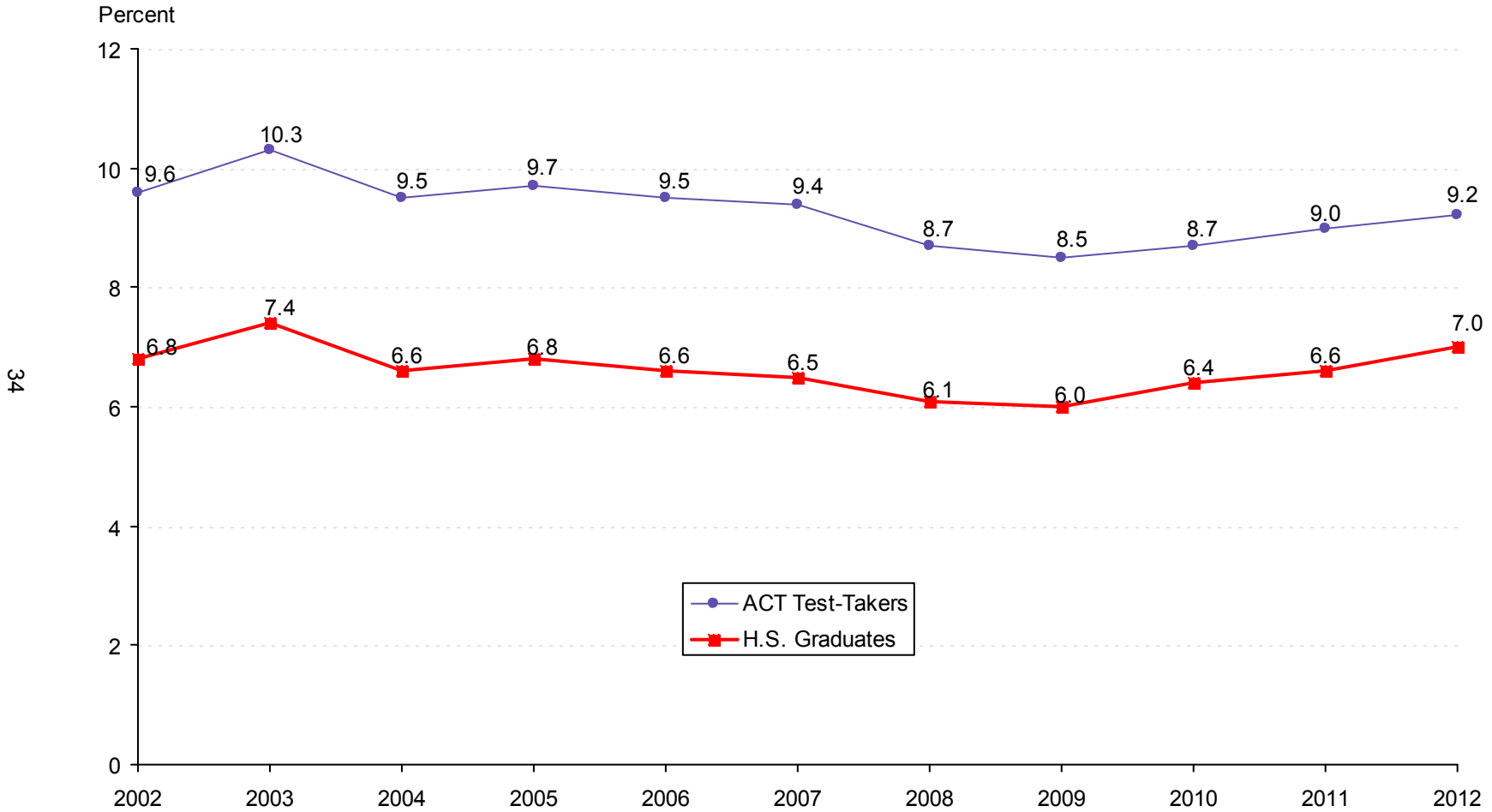
# ENROLLMENT TRENDS



**STILLWATER AND TULSA CAMPUS ENROLLMENT**  
**OKLAHOMA STATE UNIVERSITY**  
**FALL SEMESTERS 1992 THROUGH 2012**



**OKLAHOMA STATE UNIVERSITY SHARE OF THE MARKET**  
**RATIO OF BEGINNING RESIDENT FRESHMEN**  
**TO OKLAHOMA HIGH SCHOOL SPRING GRADUATES AND ACT TEST-TAKERS**  
**OKLAHOMA STATE UNIVERSITY**  
**FALL SEMESTERS 2002 THROUGH 2012**



*Note:* Total Oklahoma high school graduates for 2012 = 38,639; total Oklahoma ACT test-takers = 29,342. The beginning resident freshman count for all years include OSU-Tulsa students, but excludes non-degree-seeking and first time concurrent high school resident students. (See Page 43).

*Source:* Oklahoma High School Graduates-Projections, Oklahoma State Regents for Higher Education, and ACT Profile Report – State, Graduating Class 2012, Oklahoma.

**ENROLLMENT BY TYPE OF ADMISSION  
OKLAHOMA STATE UNIVERSITY  
FALL SEMESTERS 2002 THROUGH 2012**

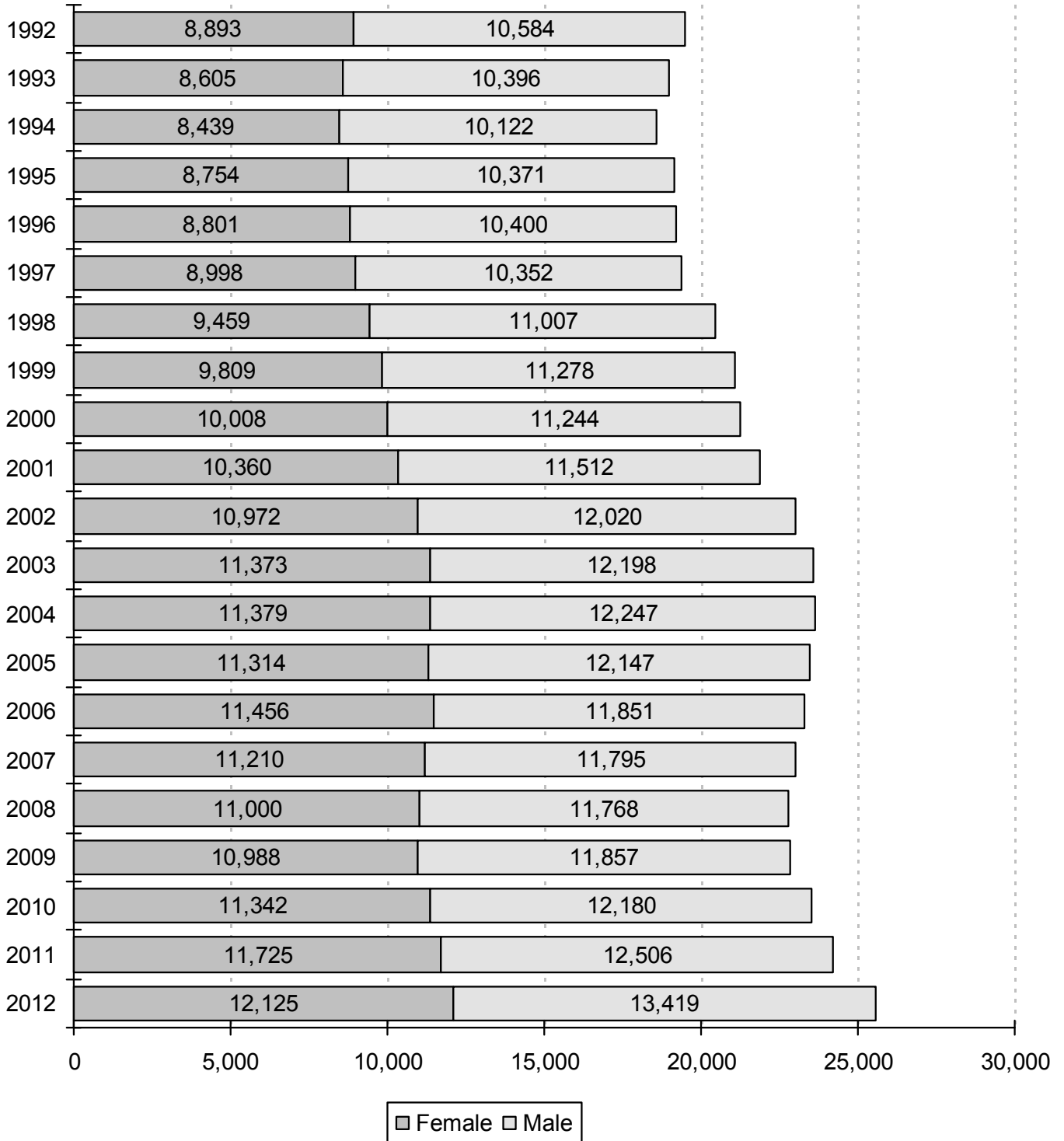
Fall	New Freshmen*	% Inc / Dec	Continuing	% Inc / Dec	Readmission	% Inc / Dec	New Transfer	% Inc / Dec	Non-Degree	% Inc / Dec	Concurrent	% Inc / Dec	Total	% Inc / Dec
2002	3,201		15,753		1,089		2,506		84		67	0.0%	<b>22,700</b>	
2003	3,430	7.2%	16,106	2.2%	941	-13.6%	2,675	6.7%	54	-35.7%	68	1.5%	<b>23,274</b>	<b>2.5%</b>
2004	3,264	-4.8%	16,274	1.0%	874	-7.1%	2,764	3.3%	87	61.1%	67	-1.5%	<b>23,330</b>	<b>0.2%</b>
2005	3,315	1.6%	16,180	-0.6%	780	-10.8%	2,754	-0.4%	80	-8.0%	56	-16.4%	<b>23,165</b>	<b>-0.7%</b>
2006	3,236	-2.4%	16,189	0.1%	648	-16.9%	2,789	1.3%	57	-28.8%	80	42.9%	<b>22,999</b>	<b>-0.7%</b>
2007	3,209	-0.8%	16,016	-1.1%	590	-9.0%	2,715	-2.7%	69	21.1%	94	17.5%	<b>22,693</b>	<b>-1.3%</b>
2008	3,073	-4.2%	15,812	-1.3%	621	5.3%	2,658	-2.1%	192	178.3%	93	-1.1%	<b>22,449</b>	<b>-1.1%</b>
2009	3,148	2.4%	15,564	-1.6%	709	14.2%	2,852	7.3%	164	-14.6%	79	-15.1%	<b>22,516</b>	<b>0.3%</b>
2010	3,554	12.9%	15,899	2.2%	508	-28.3%	3,005	5.4%	124	-24.4%	88	11.4%	<b>23,178</b>	<b>2.9%</b>
2011	3,896	9.6%	16,315	2.6%	510	0.4%	2,914	-3.0%	146	17.7%	101	14.8%	<b>23,882</b>	<b>3.0%</b>
2012	4,289	10.1%	16,986	4.1%	524	2.7%	3,175	9.0%	130	-11.0%	88	-12.9%	<b>25,192</b>	<b>5.5%</b>

*Note:* This table excludes 352 professional students for Fall 2012. However, this table does include OSU-Tulsa figures for all years listed and will not match the figures for this page in the Student Profile books prior to Fall 2003. The percentage increase or decrease in enrollment between two semesters is shown in the "% Inc / Dec" column. Example: There was a 10.1% increase in enrollment of new freshmen from Fall 2011 to Fall 2012.

\* New freshmen counts exclude concurrent high school students and non-degree-seeking students for all years listed.

Student Profile books prior to Fall 2006 include new concurrent high school students in the new freshmen counts.

**ENROLLMENT BY GENDER**  
**OKLAHOMA STATE UNIVERSITY**  
**FALL SEMESTERS 1992 THROUGH 2012**



*Note:* This chart includes professional students and OSU-Tulsa students for all years listed. Hence, these figures will not match the figures in the Student Profile books prior to 2003.

**ENROLLMENT BY CLASSIFICATION  
OKLAHOMA STATE UNIVERSITY  
FALL SEMESTERS 1992 THROUGH 2012**

Year	Freshmen	Sophomores	Juniors	Seniors	Special Undergrads	Graduates	Professional	On-Campus Total	Off-Campus OSU-T & TAFB	Grand Total
1992	3,251	3,294	3,678	4,285	20	3,759	269	18,556	921	19,477
1993	3,161	3,200	3,727	4,195	22	3,636	272	18,213	788	19,001
1994	3,187	3,034	3,612	4,215	41	3,424	271	17,784	777	18,561
1995	3,446	3,040	3,646	4,273	34	3,664	275	18,378	747	19,125
1996	3,427	3,226	3,508	4,311	47	3,658	284	18,461	740	19,201
1997	3,378	3,308	3,683	4,168	68	3,625	289	18,519	831	19,350
1998	3,535	3,464	3,874	4,379	70	3,902	297	19,521	945	20,466
1999	4,068	3,543	3,923	4,235	45	3,616	294	19,724	1,363	21,087
2000	4,148	3,765	3,834	4,339	46	3,436	292	19,860	1,392	21,252
2001	4,361	3,886	3,925	4,234	51	3,526	289	20,272	1,600	21,872
2002	4,473	3,944	4,115	4,458	49	3,818	292	21,149	1,843	22,992
2003	4,649	4,083	4,197	4,548	14	3,816	297	21,604	1,967	23,571
2004	4,462	4,056	4,266	4,604	105	3,787	296	21,576	2,050	23,626
2005	4,325	4,035	4,391	4,736	97	3,522	296	21,402	2,059	23,461
2006	4,143	4,099	4,383	4,658	109	3,535	308	21,235	2,072	23,307
2007	4,034	3,977	4,262	4,602	133	3,636	312	20,956	2,049	23,005
2008	3,803	3,795	4,280	4,517	241	3,801	319	20,756	2,012	22,768
2009	3,905	3,598	4,134	4,653	210	4,002	329	20,831	2,014	22,845
2010	4,289	3,700	4,123	4,709	186	4,412	344	21,763	1,759	23,522
2011	4,626	3,986	4,288	4,721	229	4,212	349	22,411	1,820	24,231
2012	5,088	4,237	4,611	4,862	202	4,370	352	23,722	1,822	25,544

37

Note: Effective 2000, Off-Campus OSU-T & Tinker Air Force Base column reflects OSU-Tulsa enrollment only.

**ENROLLMENT BY ETHNICITY  
OKLAHOMA STATE UNIVERSITY  
FALL SEMESTERS 2002 THROUGH 2012**

Fall Semester	White		African American		Native American		Hispanic		Asian		Pacific Islander		Multiracial		International		Unknown		Total
	Number	%	Number	%	Number	%	Number	%	Number	%	Number	%	Number	%	Number	%	Number	%	
2002	17,475	76.0%	766	3.3%	1,784	7.8%	415	1.8%	375	1.6%	N/A	N/A	N/A	N/A	2,177	9.5%	N/A	N/A	<b>22,992</b>
2003	17,905	76.0%	778	3.3%	1,838	7.8%	444	1.9%	371	1.6%	N/A	N/A	N/A	N/A	2,235	9.5%	N/A	N/A	<b>23,571</b>
2004	17,943	75.9%	918	3.9%	1,896	8.0%	447	1.9%	389	1.6%	N/A	N/A	N/A	N/A	2,033	8.6%	N/A	N/A	<b>23,626</b>
2005	17,894	76.3%	917	3.9%	1,973	8.4%	523	2.2%	388	1.7%	N/A	N/A	N/A	N/A	1,766	7.5%	N/A	N/A	<b>23,461</b>
2006	17,769	76.2%	959	4.1%	1,990	8.5%	533	2.3%	411	1.8%	N/A	N/A	N/A	N/A	1,645	7.1%	N/A	N/A	<b>23,307</b>
2007	17,443	75.8%	923	4.0%	1,993	8.7%	525	2.3%	388	1.7%	N/A	N/A	N/A	N/A	1,733	7.5%	N/A	N/A	<b>23,005</b>
2008	17,172	75.4%	930	4.1%	1,964	8.6%	566	2.5%	386	1.7%	N/A	N/A	N/A	N/A	1,750	7.7%	N/A	N/A	<b>22,768</b>
2009	17,297	75.7%	929	4.1%	1,915	8.4%	555	2.4%	363	1.6%	N/A	N/A	N/A	N/A	1,786	7.8%	N/A	N/A	<b>22,845</b>
2010	17,599	74.8%	1,029	4.4%	2,032	8.6%	594	2.5%	399	1.7%	N/A	N/A	N/A	N/A	1,869	7.9%	N/A	N/A	<b>23,522</b>
2011*	17,109	70.6%	1,066	4.4%	1,506	6.2%	930	3.8%	366	1.5%	4	0.0%	1,301	5.4%	1,661	6.9%	288	1.2%	<b>24,231</b>
2012	17,976	70.4%	1,144	4.5%	1,403	5.5%	1,039	4.1%	420	1.6%	7	0.0%	1,551	6.1%	1,758	6.9%	246	1.0%	<b>25,544</b>

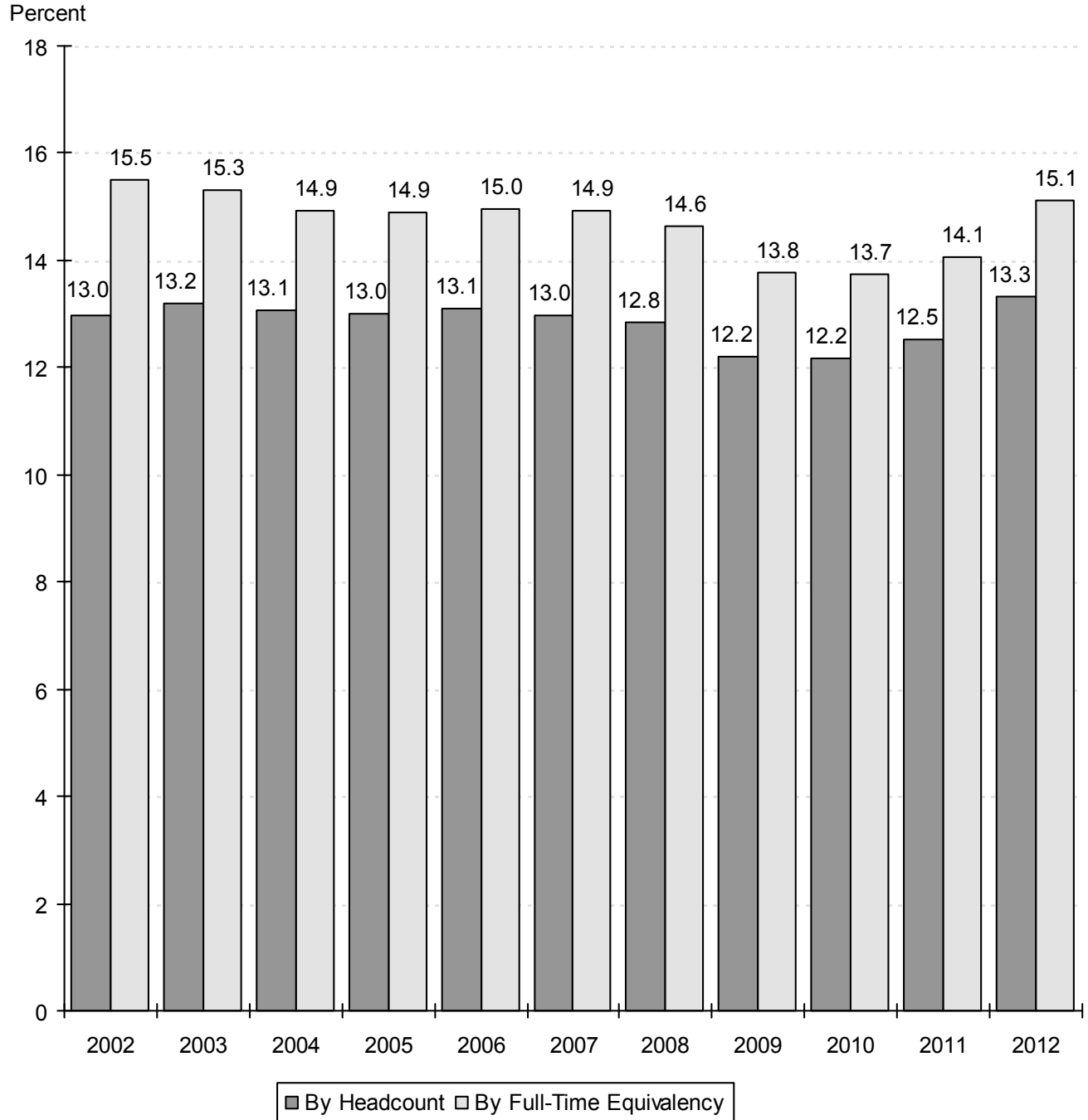
Note: This table includes professional students and OSU-Tulsa students for all years listed. Student Profile books prior to Fall 2003 do not contain OSU-Tulsa students on this page.

\* Starting from 2011, ethnicity codes were expanded to Pacific Islanders, Multiracial and Unknown.



**OSU ENROLLMENT AS A PERCENT OF TOTAL ENROLLMENT  
IN THE OKLAHOMA STATE SYSTEMS (PUBLIC)**

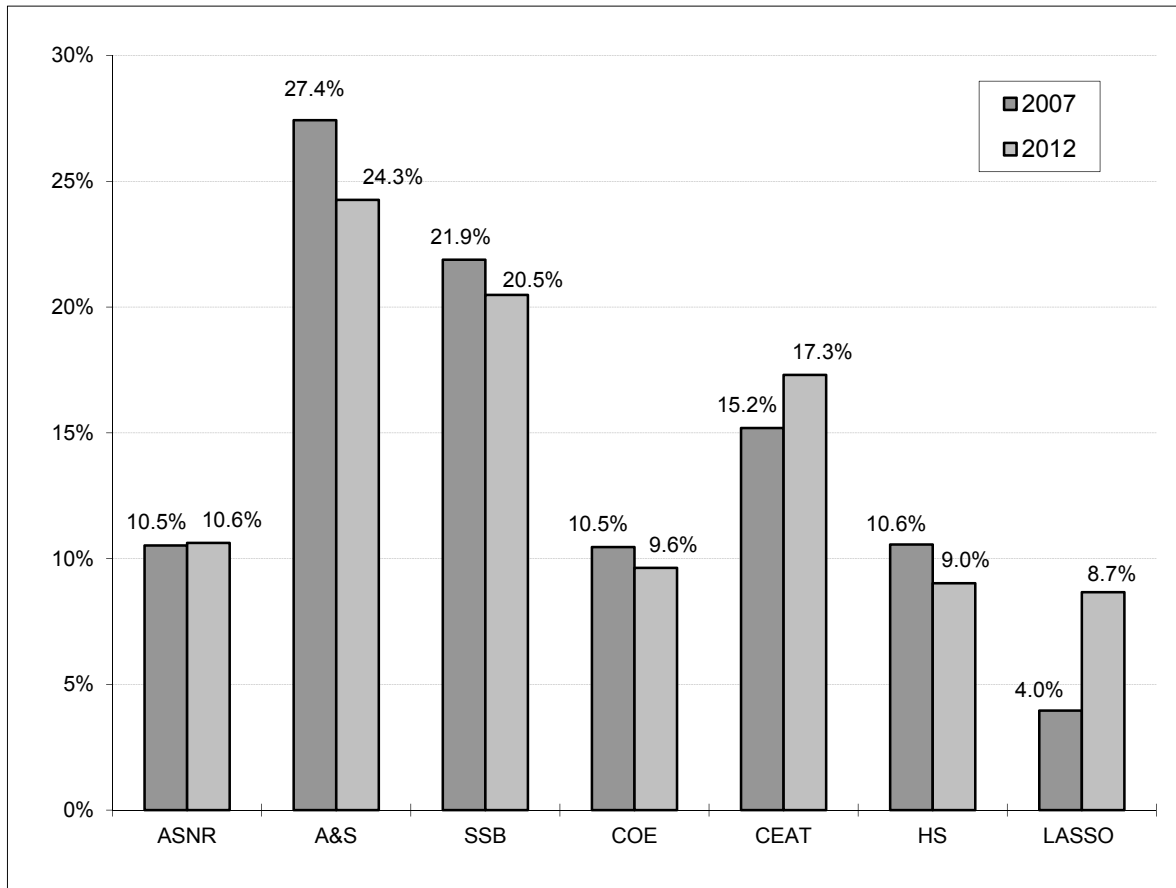
**OKLAHOMA STATE UNIVERSITY  
FALL SEMESTERS 2002 THROUGH 2012**



Source: Preliminary Enrollment Report for Oklahoma Higher Education Fall 2012,  
Oklahoma State Regents for Higher Education.

Note: Total Enrollment in the Oklahoma State Systems (Public) excludes interns and residents. Student Profile books prior to Fall 2008 included interns and residents in the total headcount enrollment.

**COMPARISON OF DISTRIBUTION OF UNDERGRADUATE MAJORS BY COLLEGE  
OKLAHOMA STATE UNIVERSITY  
FALL SEMESTERS 2007 AND 2012**



**UNDERGRADUATE MAJORS BY COLLEGE  
OKLAHOMA STATE UNIVERSITY  
FALL SEMESTERS 2007 THROUGH 2012**

Year	Ag. Sci. & Nat. Res.	Arts & Sciences	Spears Sch. of Bus.	Education	Engr., Arch., & Tech.	Human Sciences	LASSO Center	Total
2007	1,933	5,038	4,019	1,922	2,790	1,939	727	<b>18,368</b>
2008	1,907	4,857	3,927	1,911	2,780	1,823	781	<b>17,986</b>
2009	1,937	4,709	3,747	1,919	2,917	1,776	844	<b>17,849</b>
2010	1,974	4,817	3,773	1,896	3,081	1,685	971	<b>18,197</b>
2011	2,093	4,779	3,895	1,870	3,187	1,739	1,446	<b>19,009</b>
2012	2,140	4,884	4,124	1,938	3,484	1,816	1,744	<b>20,130</b>

Note: Students are reported in the college in which they are enrolled. This page includes students enrolled at OSU-Tulsa. Student Profile books prior to Fall 2003 do not contain OSU-Tulsa students on this page.

**ENROLLMENT CHANGES  
OKLAHOMA STATE UNIVERSITY  
FALL SEMESTERS 2007 AND 2012**

	2007	2012	% Change
<b><u>UNDERGRADUATE MAJORS</u></b>			
Agricultural Sciences & Natural Resources	1,933	2,140	10.7%
Arts & Sciences	5,038	4,884	-3.1%
Spears School of Business	4,019	4,124	2.6%
Education	1,922	1,938	0.8%
Engineering, Architecture, & Technology	2,790	3,484	24.9%
Human Sciences	1,939	1,816	-6.3%
LASSO Center	727	1,744	139.9%
<b><u>AGE</u></b>			
18 & Under	1,833	2,433	32.7%
19	2,981	3,773	26.6%
20	3,056	3,517	15.1%
21	3,250	3,427	5.4%
22	2,914	2,751	-5.6%
23-29	5,956	6,296	5.7%
30-39	1,819	2,149	18.1%
40 & Over	1,196	1,198	0.2%
<b><u>CLASSIFICATION</u></b>			
New Freshmen	3,191	4,237	32.8%
Other Freshmen	857	854	-0.4%
Sophomores*	4,105	4,312	5.0%
Juniors*	4,777	5,027	5.2%
Seniors	5,275	5,482	3.9%
Specials	562	521	-7.3%
Graduates	3,926	4,759	21.2%
Professional	312	352	12.8%
<b><u>RESIDENT STATUS</u></b>			
In-State	17,596	17,494	-0.6%
Out-of-State	3,676	6,292	71.2%
International	1,733	1,758	1.4%
<b><u>ETHNICITY</u></b>			
White	17,443	17,976	3.1%
African American	923	1,144	23.9%
Native American	1,993	1,403	-29.6%
Hispanic	525	1,039	97.9%
Asian	388	420	8.2%
Pacific Islander	N/A	7	N/A
Multiracial	N/A	1,551	N/A
International	1,733	1,758	1.4%
Unknown	N/A	246	N/A
<b><u>GENDER</u></b>			
Female	11,210	12,125	8.2%
Male	11,795	13,419	13.8%
<b>OVERALL ENROLLMENT</b>	<b>23,005</b>	<b>25,544</b>	<b>11.0%</b>

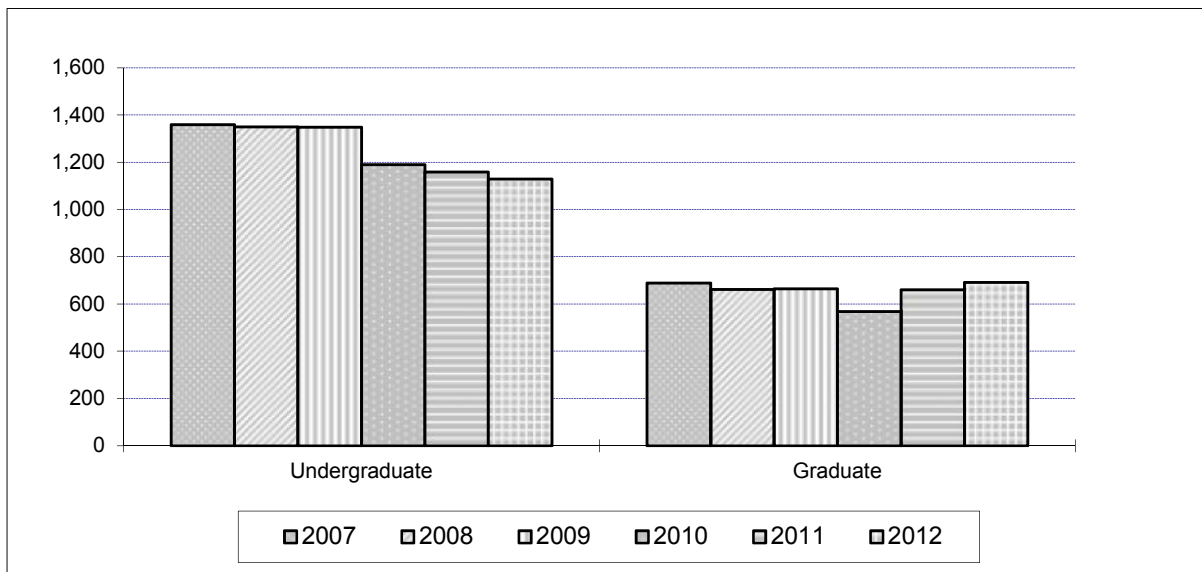
Note: This table includes professional students and OSU-Tulsa students. Student Profile books prior to Fall 2003 do not contain OSU-Tulsa students on this page.

\* 47 sophomores and 5 juniors for 2012 and 17 sophomores and 1 junior for 2007 are in their first year of college and thus listed in other tables as new freshmen.

\* Student Profile books prior to Fall 2003 include non-degree-seeking new freshmen in the New Freshmen counts

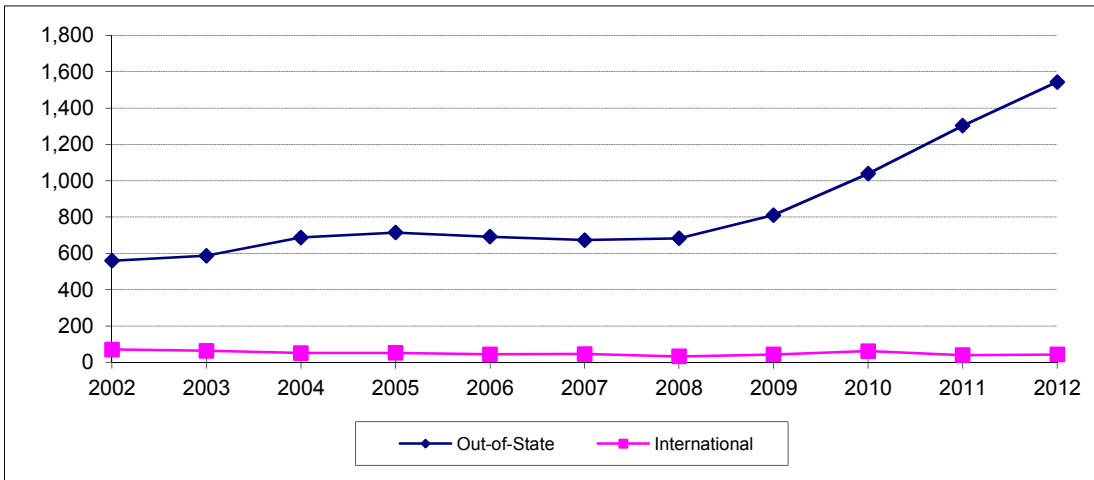
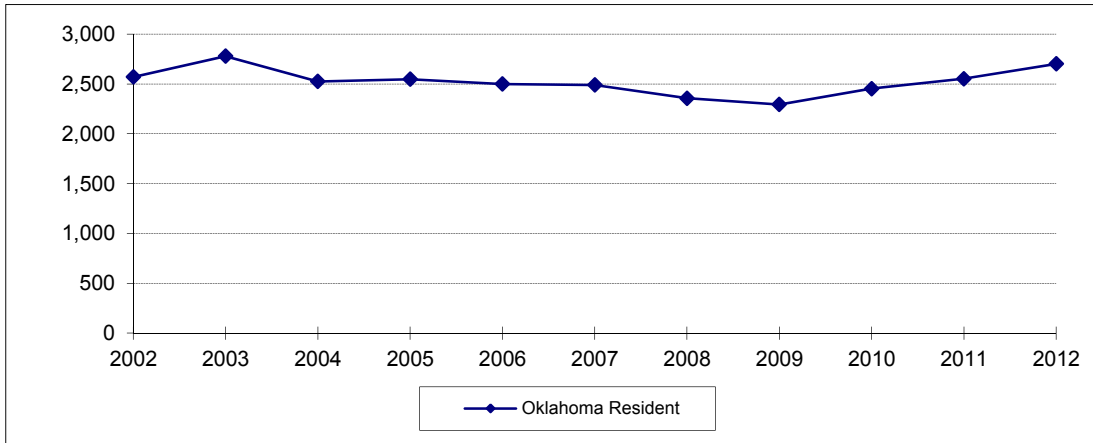
\* Student Profile books prior to Fall 2006 include new concurrent high school students in the New Freshmen counts.

**ENROLLMENT CHANGES  
OKLAHOMA STATE UNIVERSITY AT TULSA  
FALL SEMESTERS 2007 THROUGH 2012**



Classification	2007	2008	2009	2010	2011	2012	% Change 2011 to 2012
<b>Undergraduate</b>	<b>1,360</b>	<b>1,350</b>	<b>1,349</b>	<b>1,190</b>	<b>1,159</b>	<b>1,130</b>	<b>-2.5%</b>
Freshman	14	10	20	3	4	3	-25.0%
Sophomore	128	103	121	77	67	75	11.9%
Junior	515	534	484	442	405	416	2.7%
Senior	673	659	691	642	665	620	-6.8%
Special	30	44	33	26	18	16	-11.1%
<b>Graduate</b>	<b>689</b>	<b>662</b>	<b>665</b>	<b>569</b>	<b>661</b>	<b>692</b>	<b>4.7%</b>
Special	160	143	164	119	121	131	8.3%
Master	417	399	381	329	418	452	8.1%
Doctorate	112	120	120	121	122	109	-10.7%
<b>Grand Total</b>	<b>2,049</b>	<b>2,012</b>	<b>2,014</b>	<b>1,759</b>	<b>1,820</b>	<b>1,822</b>	<b>0.1%</b>

**NEW FRESHMEN ENROLLMENT BY RESIDENCY  
OKLAHOMA STATE UNIVERSITY  
FALL SEMESTERS 2002 THROUGH 2012**



Fall Semester	Oklahoma Resident	Out-of-State	International	Total
2002	2,570	560	71	3,201
2003	2,779	587	64	3,430
2004	2,526	687	51	3,264
2005	2,548	715	52	3,315
2006	2,500	692	44	3,236
2007	2,490	673	46	3,209
2008	2,357	683	33	3,073
2009	2,294	811	43	3,148
2010	2,453	1,039	62	3,554
2011	2,553	1,303	40	3,896
2012	2,702	1,544	43	4,289

Note: This table includes students at OSU-Tulsa, but does not include non-degree-seeking new freshmen and new concurrent high school students.

Student Profile books prior to Fall 2003 do not contain OSU-Tulsa students on this page.

Student Profile books prior to Fall 2006 contain new concurrent high school students on this page.

