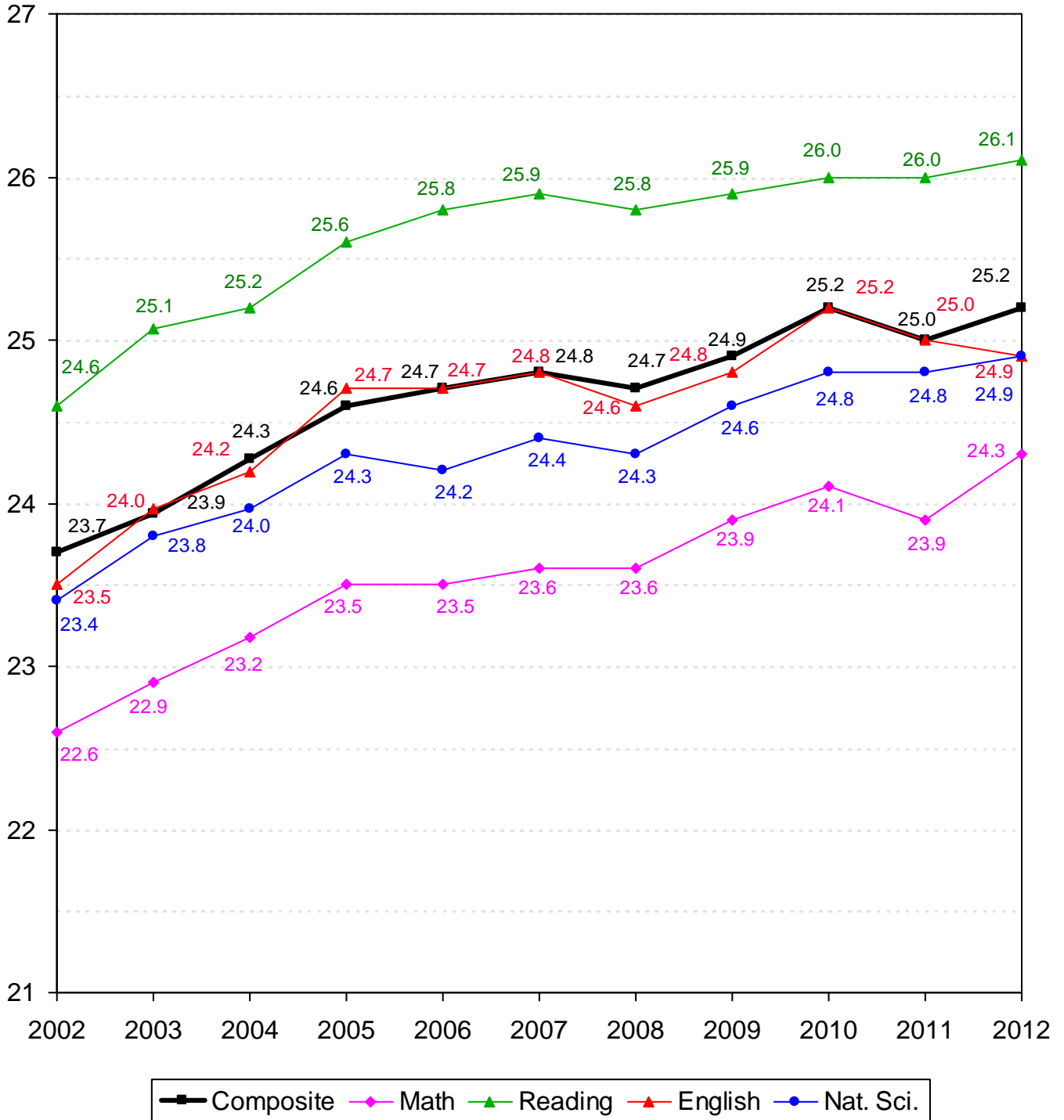


ACADEMIC INFORMATION

TEN-YEAR COMPARISON OF ACT SCORES FOR NEW FRESHMEN
OKLAHOMA STATE UNIVERSITY
FALL SEMESTERS 2002 THROUGH 2012



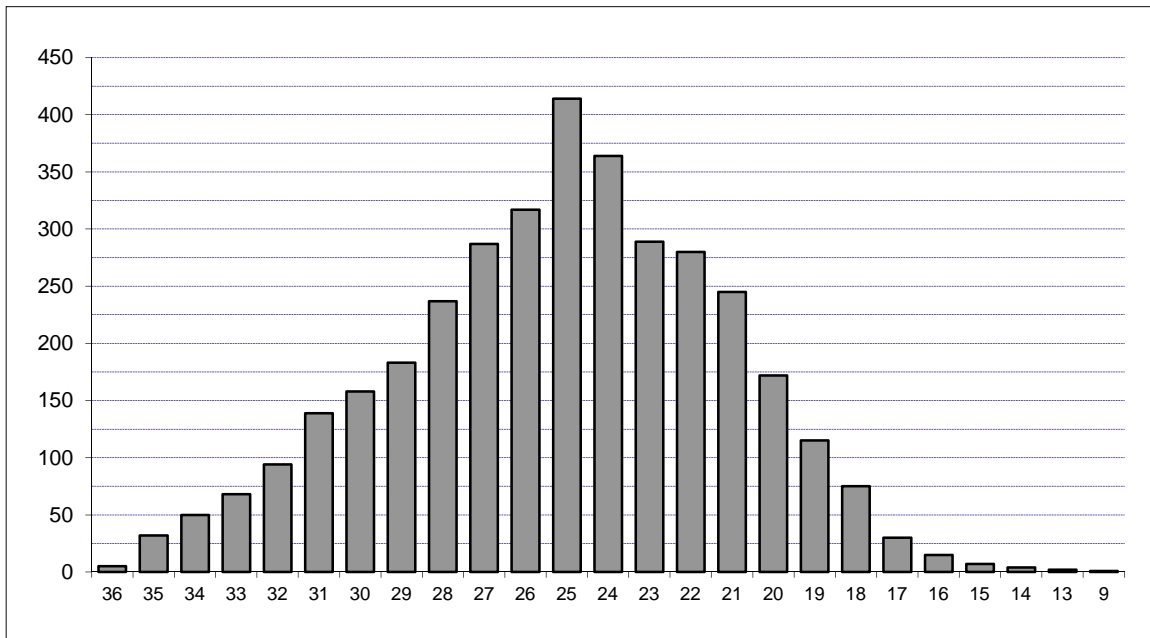
Note: Averages reflect the highest value for each subscore that a student received. Beginning in 2003, ACT composite scores are the average of the highest of each subscore received.

**COMPOSITE ACT AND SAT AVERAGES OF NEW FRESHMEN BY COLLEGE
OKLAHOMA STATE UNIVERSITY
FALL SEMESTER 2012**

College	ACT		SAT	
	Count	Composite	Count	Composite
Ag. Sciences & Natural Res.	364	25.5	61	1,130
Arts & Sciences	822	26.0	148	1,161
Spears School of Business	469	25.5	110	1,161
Education	249	24.5	41	1,130
Engineering & Architecture	641	27.9	128	1,202
Div. of Technology	63	24.0	10	1,127
Human Sciences	259	24.8	31	1,113
Overall College Average	2,867	26.0	529	1,162
LASSO Center	716	21.8	152	992
Overall Average	3,583	25.2	681	1,124

Note: Composite scores in this table are calculated using the highest subscores obtained for each student. If students have taken both the ACT and the SAT, only the higher score is reported.

**DISTRIBUTION OF NEW FRESHMEN BY COMPOSITE ACT SCORE
OKLAHOMA STATE UNIVERSITY
FALL SEMESTER 2012**



Composite ACT Score	Female	Male	Total	Percent	Cumulative Percent
36	0	5	5	0.14%	0.14%
35	8	24	32	0.89%	1.03%
34	14	36	50	1.40%	2.43%
33	24	44	68	1.90%	4.33%
32	34	60	94	2.62%	6.95%
31	68	71	139	3.88%	10.83%
30	82	76	158	4.41%	15.24%
29	92	91	183	5.11%	20.35%
28	120	117	237	6.61%	26.96%
27	147	140	287	8.01%	34.97%
26	178	139	317	8.85%	43.82%
25	214	200	414	11.55%	55.37%
24	197	167	364	10.16%	65.53%
23	166	123	289	8.07%	73.60%
22	130	150	280	7.81%	81.41%
21	133	112	245	6.84%	88.25%
20	103	69	172	4.80%	93.05%
19	64	51	115	3.21%	96.26%
18	42	33	75	2.09%	98.35%
17	18	12	30	0.84%	99.19%
16	7	8	15	0.42%	99.61%
15	2	5	7	0.20%	99.80%
14	3	1	4	0.11%	99.92%
13	2	0	2	0.06%	99.97%
9	0	1	1	0.03%	100.0%
Total	1,848	1,735	3,583	100.0%	100.0%

Note: ACT scores are only included in this table if they represent the highest test score available for the student. If the student's SAT score (converted to an ACT equivalent) is higher, then the ACT score is not included here.

**ACT AND SAT AVERAGES OF NEW FRESHMEN BY ETHNICITY AND GENDER
OKLAHOMA STATE UNIVERSITY
FALL SEMESTER 2012**

Ethnicity	ACT		SAT	
	Count	Composite	Count	Composite
White	2,639	25.6	482	1,144
African American	204	21.3	63	996
Native American	158	24.9	14	1,116
Hispanic	160	24.5	49	1,098
Asian	55	24.9	12	1,132
Pacific Islander	1	34.0	-	-
Multiracial	345	25.0	44	1,153
International	8	25.8	13	1,002
Unknown	13	23.7	4	1,150
Gender				
Female	1,848	24.9	302	1,110
Male	1,735	25.5	379	1,135
Total	3,583	25.2	681	1,124

Note: Composite scores in this table are calculated using the highest subscores obtained for each student. If students have taken both the ACT and the SAT, only the higher score is reported.

**OKLAHOMA HIGH SCHOOL ACT PARTICIPATION STATISTICS
OKLAHOMA STATE UNIVERSITY
2007 THROUGH 2012**

	2007		2008		2009		2010		2011		2012	
High School Graduates in Oklahoma ¹	38,314		38,915		38,468		39,808		37,719		38,639	
Number of Oklahoma H.S. Students Taking ACT ^{2*}	26,360		27,131		27,054		28,343		28,223		29,342	
Total ACT Scores Received by OSU ^{2**}	9,167		8,135		7,564		7,946		7,836		8,121	
1st Choice / % of Scores Received	3,421	37.3%	2,942	36.2%	2,671	35.3%	2,908	36.6%	2,983	38.1%	3,227	39.7%
2nd - 6th Choices / % of Scores Received	5,746	62.7%	5,193	63.8%	4,893	64.7%	5,038	63.4%	4,853	61.9%	4,894	60.3%
Applications Received by OSU	6,415		6,406		7,561		8,696		9,914		12,056	
New Freshmen Accepted by OSU	5,651		5,702		6,537		7,079		8,099		9,351	
% of Applications Received	88.1%		89.0%		86.5%		81.4%		81.7%		77.6%	
New Freshmen Enrolled at OSU	3,209		3,073		3,148		3,554		3,896		4,289	
% of Freshmen Accepted	56.8%		53.9%		48.2%		50.2%		48.1%		45.9%	

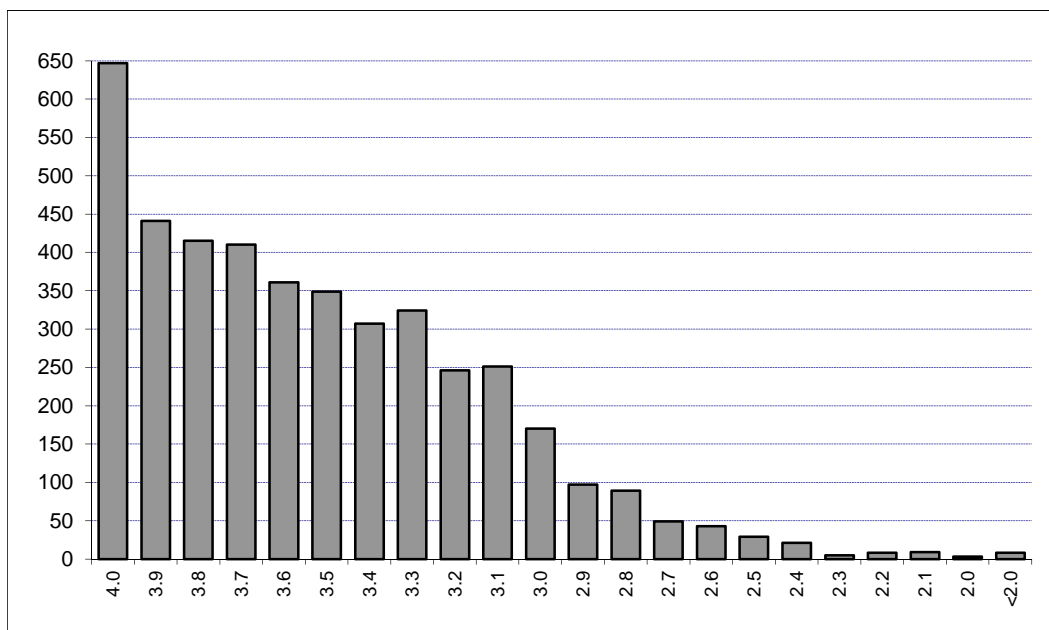
¹Source - Oklahoma High School Graduates - Projections, Oklahoma State Regents for Higher Education (Projections for 2012)

²Source - ACT Profile Report - State, Graduating Class 2012, Oklahoma

*This includes only Oklahoma high school graduates who took the ACT prior to graduation in the year indicated.

**This includes only those students eligible for college enrollment in the fall semester of the year indicated and does not include multiple ACT scores for any one student. Student Profiles prior to Fall 2003 may include multiple ACT scores per person.

**DISTRIBUTION OF FRESHMEN HIGH SCHOOL GRADE POINT AVERAGES
OKLAHOMA STATE UNIVERSITY
FALL SEMESTER 2012**

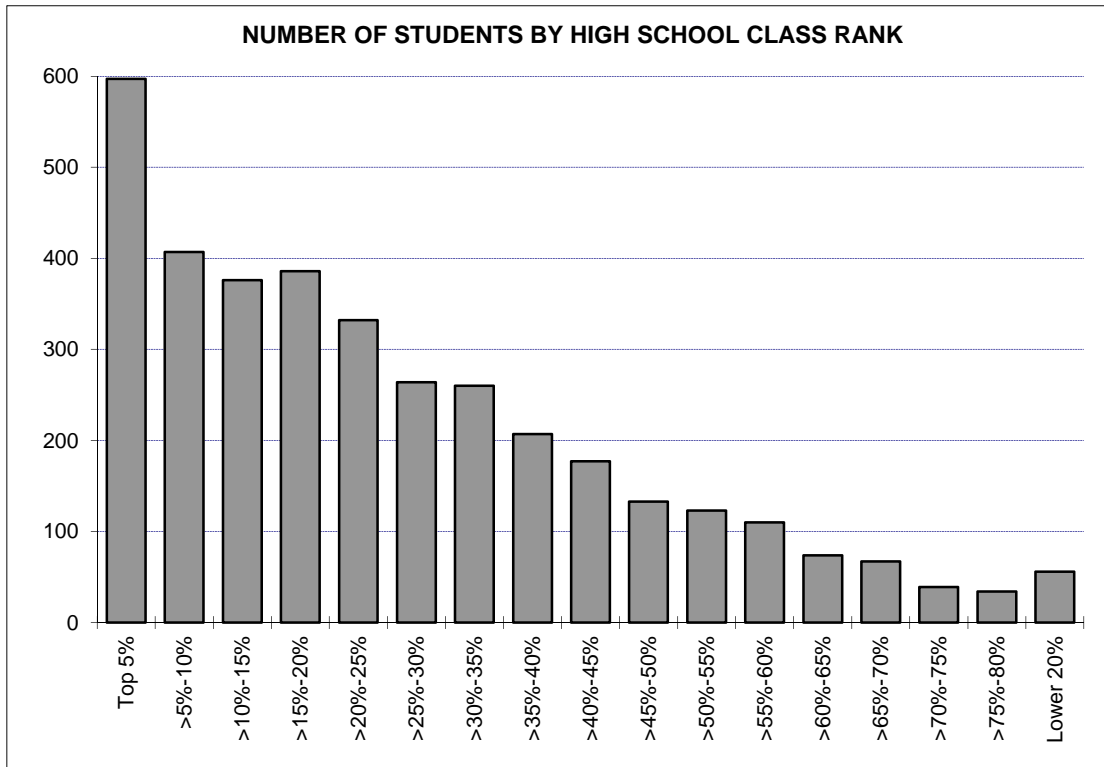


GPA	Number	Cumulative Number	Percent	Cumulative Percent
4.0	647	647	15.11%	15.11%
3.9	441	1,088	10.30%	25.41%
3.8	415	1,503	9.69%	35.10%
3.7	410	1,913	9.57%	44.68%
3.6	361	2,274	8.43%	53.11%
3.5	349	2,623	8.15%	61.26%
3.4	307	2,930	7.17%	68.43%
3.3	324	3,254	7.57%	75.99%
3.2	246	3,500	5.74%	81.74%
3.1	251	3,751	5.86%	87.60%
3.0	170	3,921	3.97%	91.57%
2.9	97	4,018	2.27%	93.83%
2.8	89	4,107	2.08%	95.91%
2.7	49	4,156	1.14%	97.06%
2.6	43	4,199	1.00%	98.06%
2.5	29	4,228	0.68%	98.74%
2.4	21	4,249	0.49%	99.23%
2.3	5	4,254	0.12%	99.35%
2.2	8	4,262	0.19%	99.53%
2.1	9	4,271	0.21%	99.74%
2.0	3	4,274	0.07%	99.81%
<2.0	8	4,282	0.19%	100.0%
Total	4,282	4,282	100.0%	100.0%

Note: 7 new freshmen (including international, home schooled, and adult admission students) did not supply a high school GPA.

The average high school GPA reported was 3.52. The average high school core GPA calculated was 3.58.

**RANK IN HIGH SCHOOL CLASS BY NUMBER OF NEW FRESHMEN & PERCENT IN EACH RANK
OKLAHOMA STATE UNIVERSITY
FALL SEMESTER 2012**

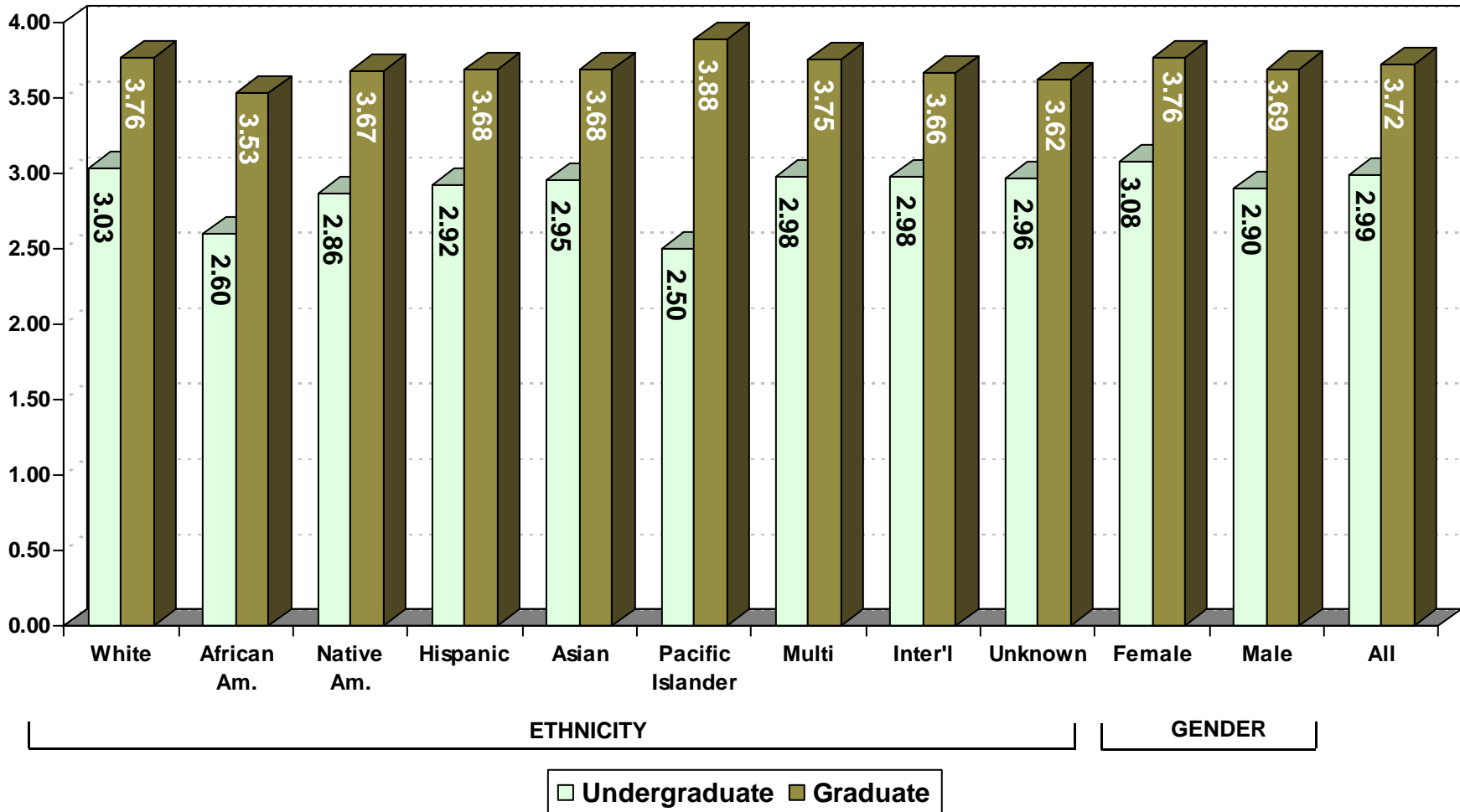


Rank	Number	Cumulative Number	Percent	Cumulative Percent
Top 5%	597	597	16.39%	16.39%
>5%-10%	407	1,004	11.18%	27.57%
>10%-15%	376	1,380	10.32%	37.89%
>15%-20%	386	1,766	10.60%	48.49%
>20%-25%	332	2,098	9.12%	57.61%
>25%-30%	264	2,362	7.25%	64.85%
>30%-35%	260	2,622	7.14%	71.99%
>35%-40%	207	2,829	5.68%	77.68%
>40%-45%	177	3,006	4.86%	82.54%
>45%-50%	133	3,139	3.65%	86.19%
>50%-55%	123	3,262	3.38%	89.57%
>55%-60%	110	3,372	3.02%	92.59%
>60%-65%	74	3,446	2.03%	94.62%
>65%-70%	67	3,513	1.84%	96.46%
>70%-75%	39	3,552	1.07%	97.53%
>75%-80%	34	3,586	0.93%	98.46%
Lower 20%	56	3,642	1.54%	100.0%

Note: 647 new freshmen (including international, home schooled, and adult admission students) did not supply a high school rank.

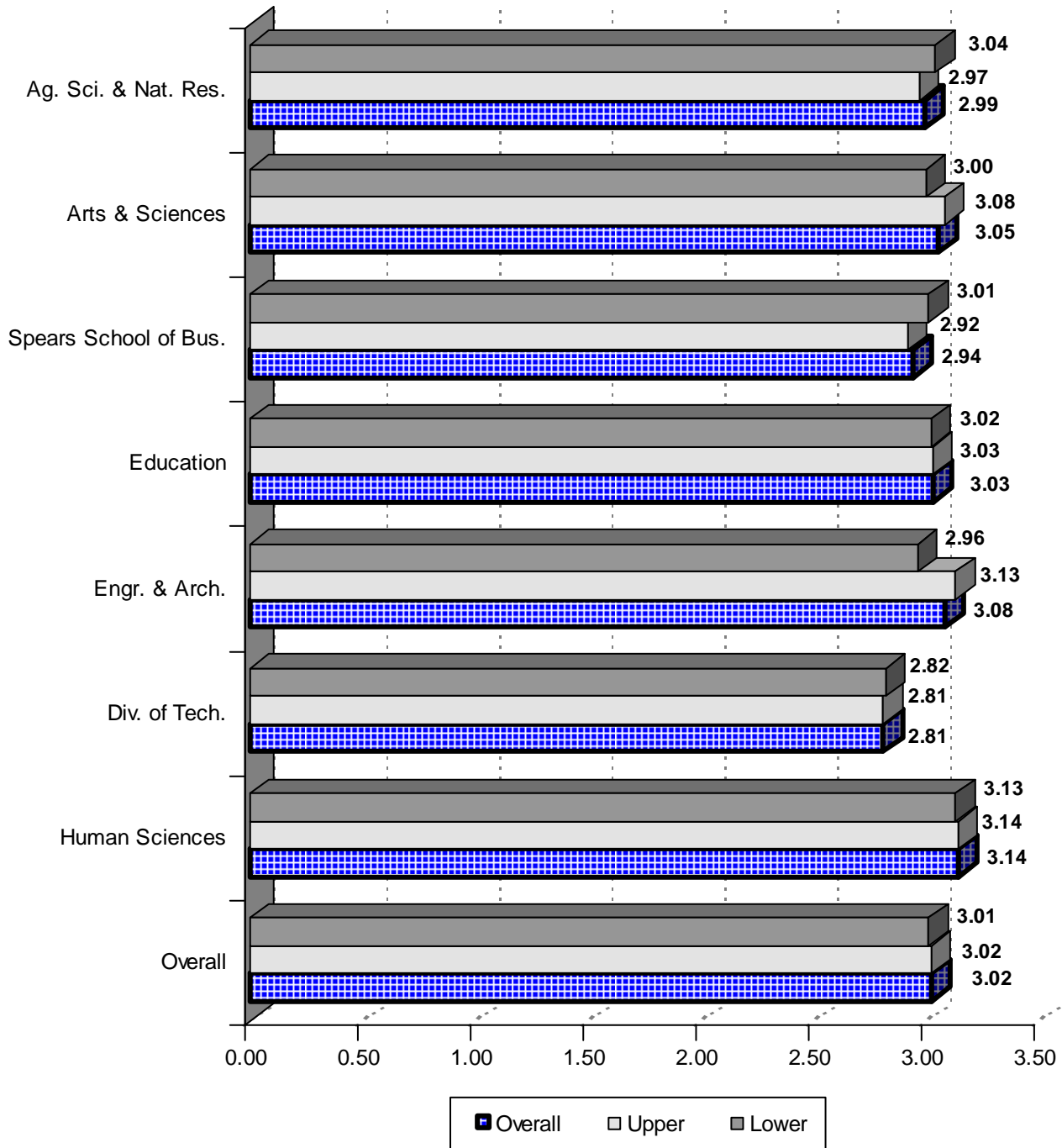
AVERAGE CUMULATIVE GRADE POINT AVERAGE BY ETHNICITY AND GENDER
OKLAHOMA STATE UNIVERSITY
FALL SEMESTER 2012

51



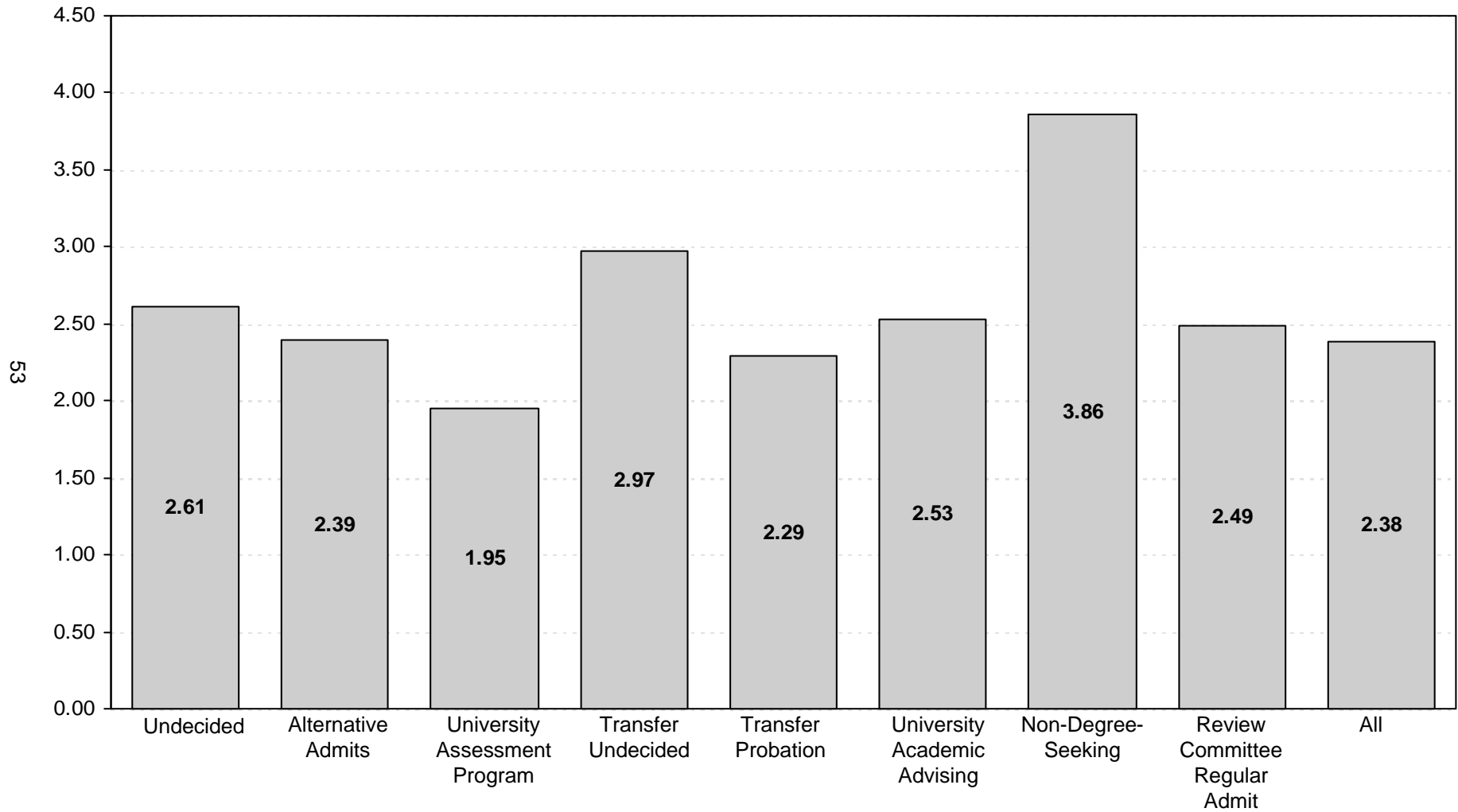
Note: The data presented above includes 13,858 undergraduates and 3,556 graduates for whom a cumulative GPA was reported. This chart excludes professional students, new transfers, and new freshmen, but includes students at OSU-Tulsa.

**AVERAGE CUMULATIVE GRADE POINT AVERAGE
OF UNDERGRADUATE STUDENTS BY COLLEGE AND DIVISION
OKLAHOMA STATE UNIVERSITY
FALL SEMESTER 2012**



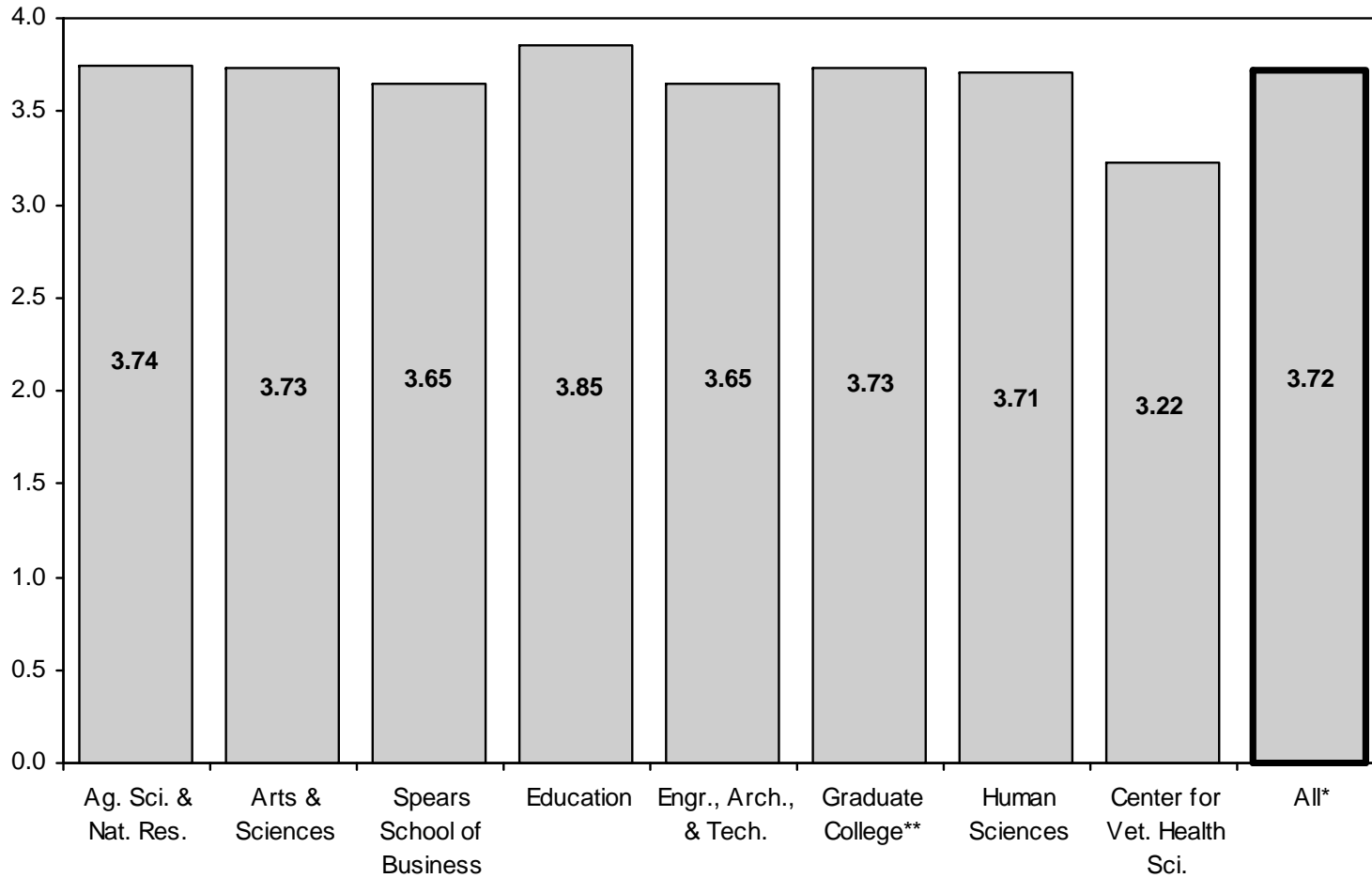
Note: This chart includes 13,140 undergraduates enrolled for Fall 2012 for whom a cumulative GPA was reported. This chart excludes professional students, new freshmen, new transfers, and LASSO Center, but includes students enrolled at OSU-Tulsa.

**AVERAGE CUMULATIVE GRADE POINT AVERAGE
OF LASSO CENTER STUDENTS
OKLAHOMA STATE UNIVERSITY
FALL SEMESTER 2012**



Note: This chart includes 716 students enrolled in LASSO Center in the Fall 2012 semester for whom a cumulative GPA was reported.

**AVERAGE CUMULATIVE GRADE POINT AVERAGE
OF GRADUATE STUDENTS BY COLLEGE
OKLAHOMA STATE UNIVERSITY
FALL SEMESTER 2012**

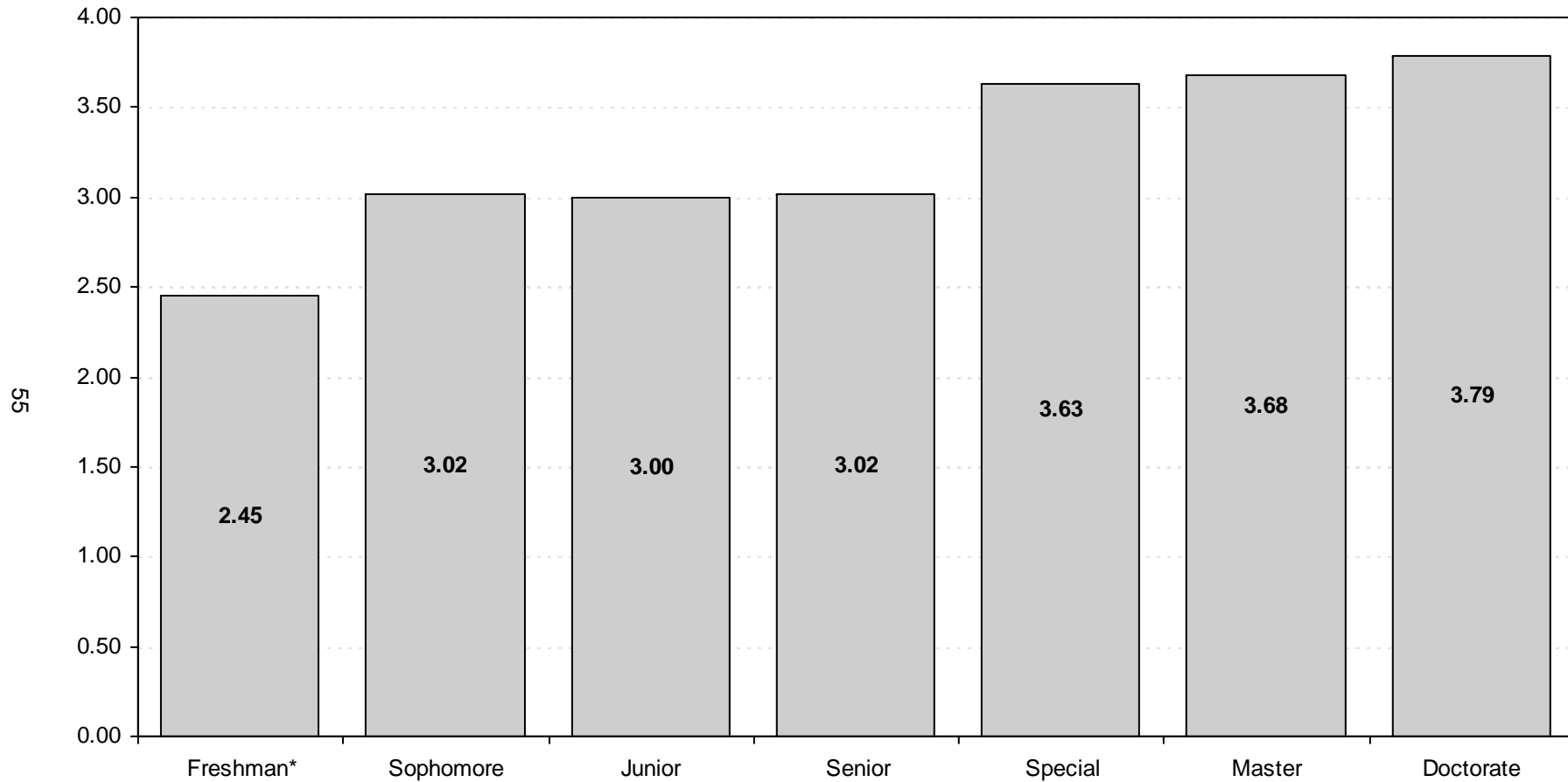


*Center for Veterinary Health Sciences' professional students are excluded from the overall average.

**Interdisciplinary graduate programs that do not have a specific area of specialization are reported in the Graduate College.

Note: This chart includes 3,556 graduate students and 259 professional students enrolled in the Fall 2012 semester for whom a cumulative GPA was reported. This chart does not include new transfer students but does include students enrolled at OSU-Tulsa.

**AVERAGE CUMULATIVE GRADE POINT AVERAGE
OF STUDENTS BY CLASS LEVEL
OKLAHOMA STATE UNIVERSITY
FALL SEMESTER 2012**



*Includes students enrolled previously who have earned fewer than 28 semester credit hours. This does not include Fall 2012 new freshmen.

Note: This chart includes 17,414 students enrolled in the Fall 2012 semester for whom a cumulative GPA was reported. This chart excludes professional students, new freshmen, and new transfer students, but includes students enrolled at OSU-Tulsa.