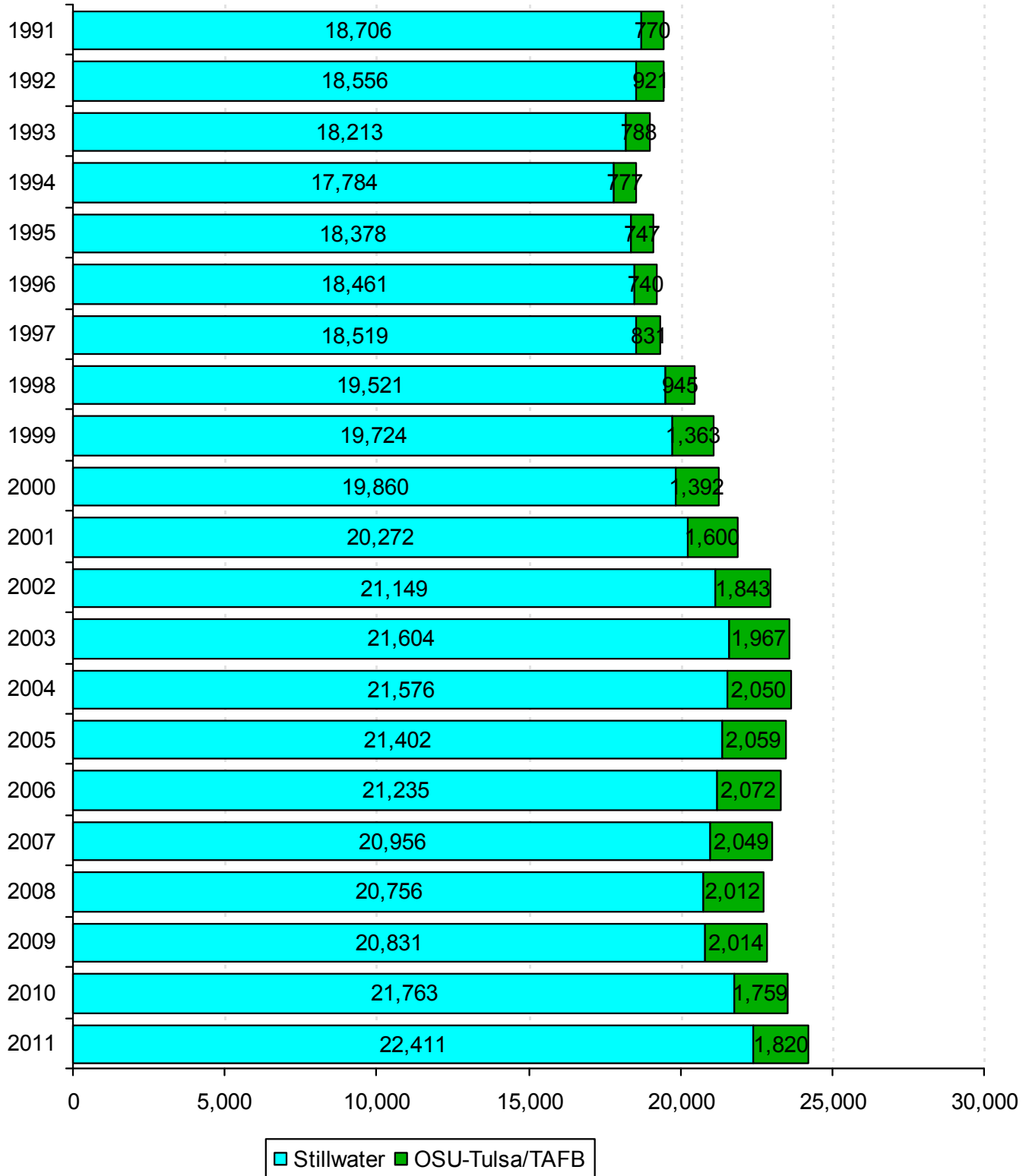
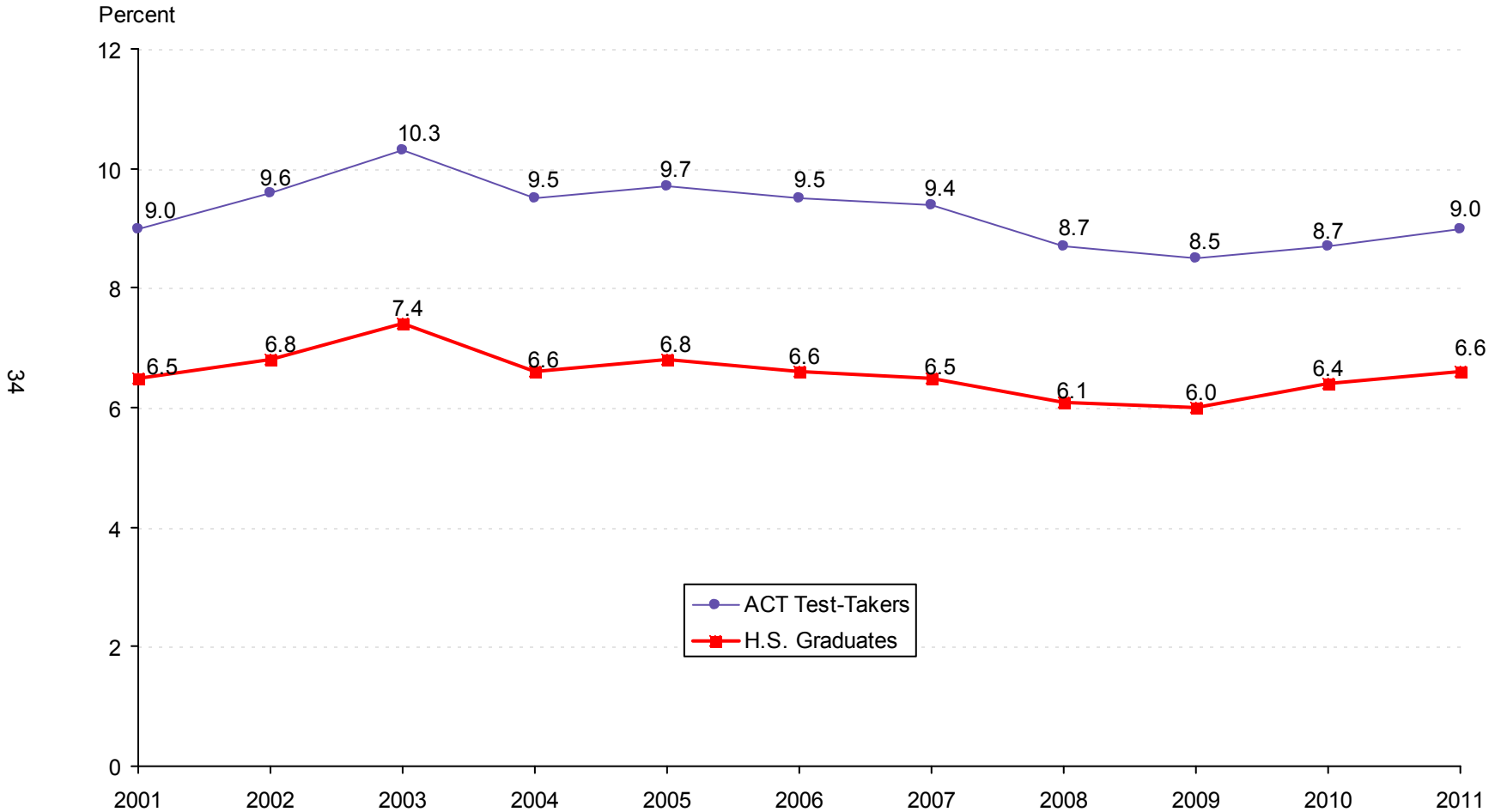


ENROLLMENT TRENDS

STILLWATER AND TULSA CAMPUS ENROLLMENT
OKLAHOMA STATE UNIVERSITY
FALL SEMESTERS 1991 THROUGH 2011



OKLAHOMA STATE UNIVERSITY SHARE OF THE MARKET
RATIO OF BEGINNING RESIDENT FRESHMEN
TO OKLAHOMA HIGH SCHOOL SPRING GRADUATES AND ACT TEST-TAKERS
OKLAHOMA STATE UNIVERSITY
FALL SEMESTERS 2001 THROUGH 2011



Note: Total Oklahoma high school graduates for 2011 = 38,531; total Oklahoma ACT test-takers = 28,223. The beginning resident freshman count for all years include OSU-Tulsa students, but excludes non-degree-seeking and first time concurrent high school resident students. (See Page 43).

Source: *Oklahoma High School Graduates-Projections*, Oklahoma State Regents for Higher Education, and *ACT Profile Report – State, Graduating Class 2011, Oklahoma*.

**ENROLLMENT BY TYPE OF ADMISSION
OKLAHOMA STATE UNIVERSITY
FALL SEMESTERS 2001 THROUGH 2011**

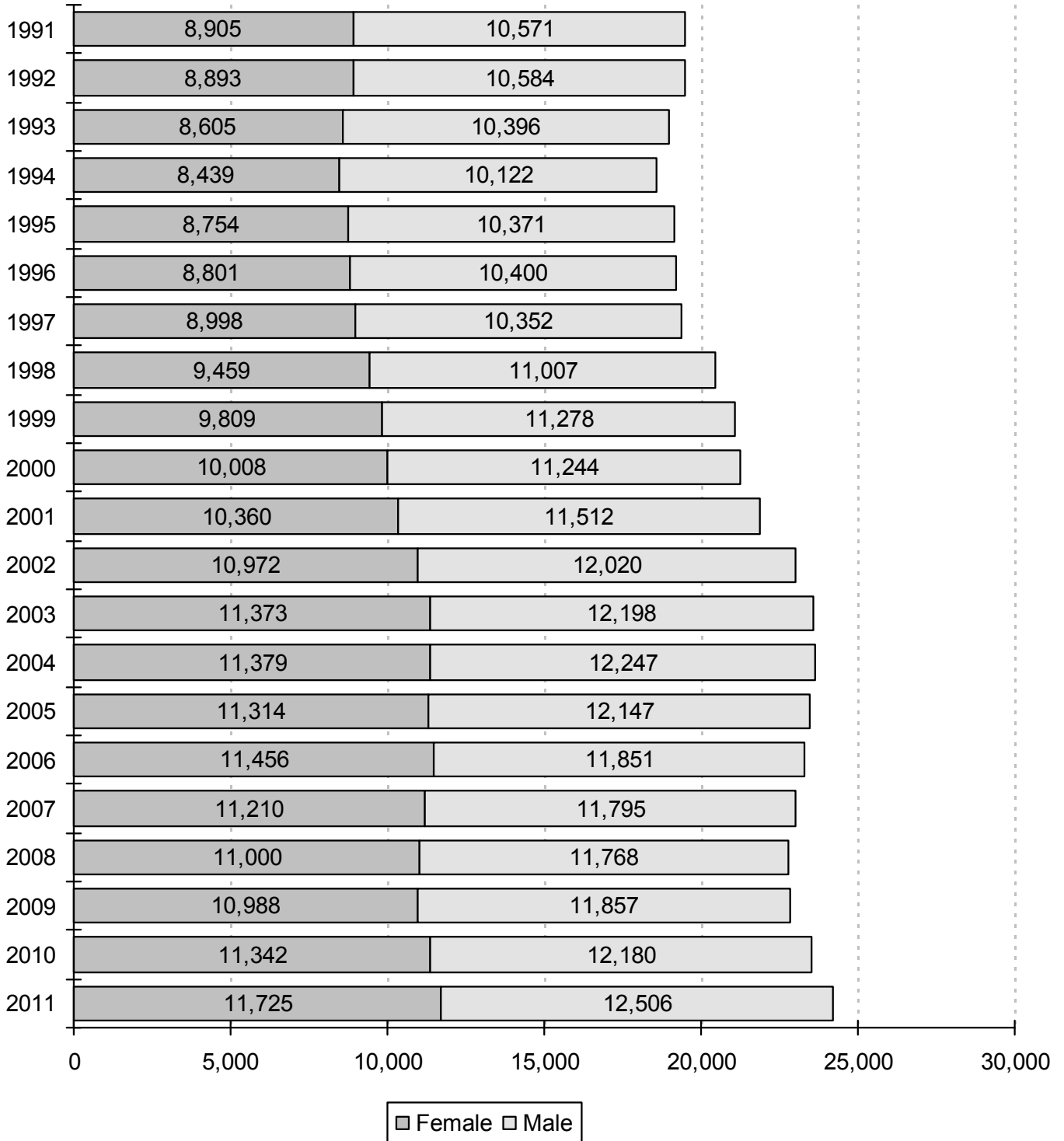
Fall	New Freshmen*	% Inc / Dec	Continuing	% Inc / Dec	Readmission	% Inc / Dec	New Transfer	% Inc / Dec	Non-Degree	% Inc / Dec	Concurrent	% Inc / Dec	Total	% Inc / Dec
2001	3,103		14,933		961		2,363		153		70	0.0%	21,583	
2002	3,201	3.2%	15,753	5.5%	1,089	13.3%	2,506	6.1%	84	-45.1%	67	-4.3%	22,700	5.2%
2003	3,430	7.2%	16,106	2.2%	941	-13.6%	2,675	6.7%	54	-35.7%	68	1.5%	23,274	2.5%
2004	3,264	-4.8%	16,274	1.0%	874	-7.1%	2,764	3.3%	87	61.1%	67	-1.5%	23,330	0.2%
2005	3,315	1.6%	16,180	-0.6%	780	-10.8%	2,754	-0.4%	80	-8.0%	56	-16.4%	23,165	-0.7%
2006	3,236	-2.4%	16,189	0.1%	648	-16.9%	2,789	1.3%	57	-28.8%	80	42.9%	22,999	-0.7%
2007	3,209	-0.8%	16,016	-1.1%	590	-9.0%	2,715	-2.7%	69	21.1%	94	17.5%	22,693	-1.3%
2008	3,073	-4.2%	15,812	-1.3%	621	5.3%	2,658	-2.1%	192	178.3%	93	-1.1%	22,449	-1.1%
2009	3,148	2.4%	15,564	-1.6%	709	14.2%	2,852	7.3%	164	-14.6%	79	-15.1%	22,516	0.3%
2010	3,554	12.9%	15,899	2.2%	508	-28.3%	3,005	5.4%	124	-24.4%	88	11.4%	23,178	2.9%
2011	3,896	9.6%	16,315	2.6%	510	0.4%	2,914	-3.0%	146	17.7%	101	14.8%	23,882	3.0%

Note: This table excludes 349 professional students for Fall 2011. However, this table does include OSU-Tulsa figures for all years listed and will not match the figures for this page in the Student Profile books prior to Fall 2003. The percentage increase or decrease in enrollment between two semesters is shown in the "% Inc / Dec" column. Example: There was a 9.6% increase in enrollment of new freshmen from Fall 2010 to Fall 2011.

* New freshmen counts exclude concurrent high school students and non-degree-seeking students for all years listed.

Student Profile books prior to Fall 2006 include new concurrent high school students in the new freshmen counts.

ENROLLMENT BY GENDER
OKLAHOMA STATE UNIVERSITY
FALL SEMESTERS 1991 THROUGH 2011



Note: This chart includes professional students and OSU-Tulsa students for all years listed. Hence, these figures will not match the figures in the Student Profile books prior to 2003.

**ENROLLMENT BY CLASSIFICATION
OKLAHOMA STATE UNIVERSITY
FALL SEMESTERS 1991 THROUGH 2011**

Year	Freshmen	Sophomores	Juniors	Seniors	Special Undergrads	Graduates	Professional	On-Campus Total	Off-Campus OSU-T & TAFB	Grand Total
1991	3,321	3,431	3,996	4,102	3	3,601	252	18,706	770	19,476
1992	3,251	3,294	3,678	4,285	20	3,759	269	18,556	921	19,477
1993	3,161	3,200	3,727	4,195	22	3,636	272	18,213	788	19,001
1994	3,187	3,034	3,612	4,215	41	3,424	271	17,784	777	18,561
1995	3,446	3,040	3,646	4,273	34	3,664	275	18,378	747	19,125
1996	3,427	3,226	3,508	4,311	47	3,658	284	18,461	740	19,201
1997	3,378	3,308	3,683	4,168	68	3,625	289	18,519	831	19,350
1998	3,535	3,464	3,874	4,379	70	3,902	297	19,521	945	20,466
1999	4,068	3,543	3,923	4,235	45	3,616	294	19,724	1,363	21,087
2000	4,148	3,765	3,834	4,339	46	3,436	292	19,860	1,392	21,252
2001	4,361	3,886	3,925	4,234	51	3,526	289	20,272	1,600	21,872
2002	4,473	3,944	4,115	4,458	49	3,818	292	21,149	1,843	22,992
2003	4,649	4,083	4,197	4,548	14	3,816	297	21,604	1,967	23,571
2004	4,462	4,056	4,266	4,604	105	3,787	296	21,576	2,050	23,626
2005	4,325	4,035	4,391	4,736	97	3,522	296	21,402	2,059	23,461
2006	4,143	4,099	4,383	4,658	109	3,535	308	21,235	2,072	23,307
2007	4,034	3,977	4,262	4,602	133	3,636	312	20,956	2,049	23,005
2008	3,803	3,795	4,280	4,517	241	3,801	319	20,756	2,012	22,768
2009	3,905	3,598	4,134	4,653	210	4,002	329	20,831	2,014	22,845
2010	4,289	3,700	4,123	4,709	186	4,412	344	21,763	1,759	23,522
2011	4,626	3,986	4,288	4,721	229	4,212	349	22,411	1,820	24,231

37

Note: Effective 2000, Off-Campus OSU-T & Tinker Air Force Base column reflects OSU-Tulsa enrollment only.

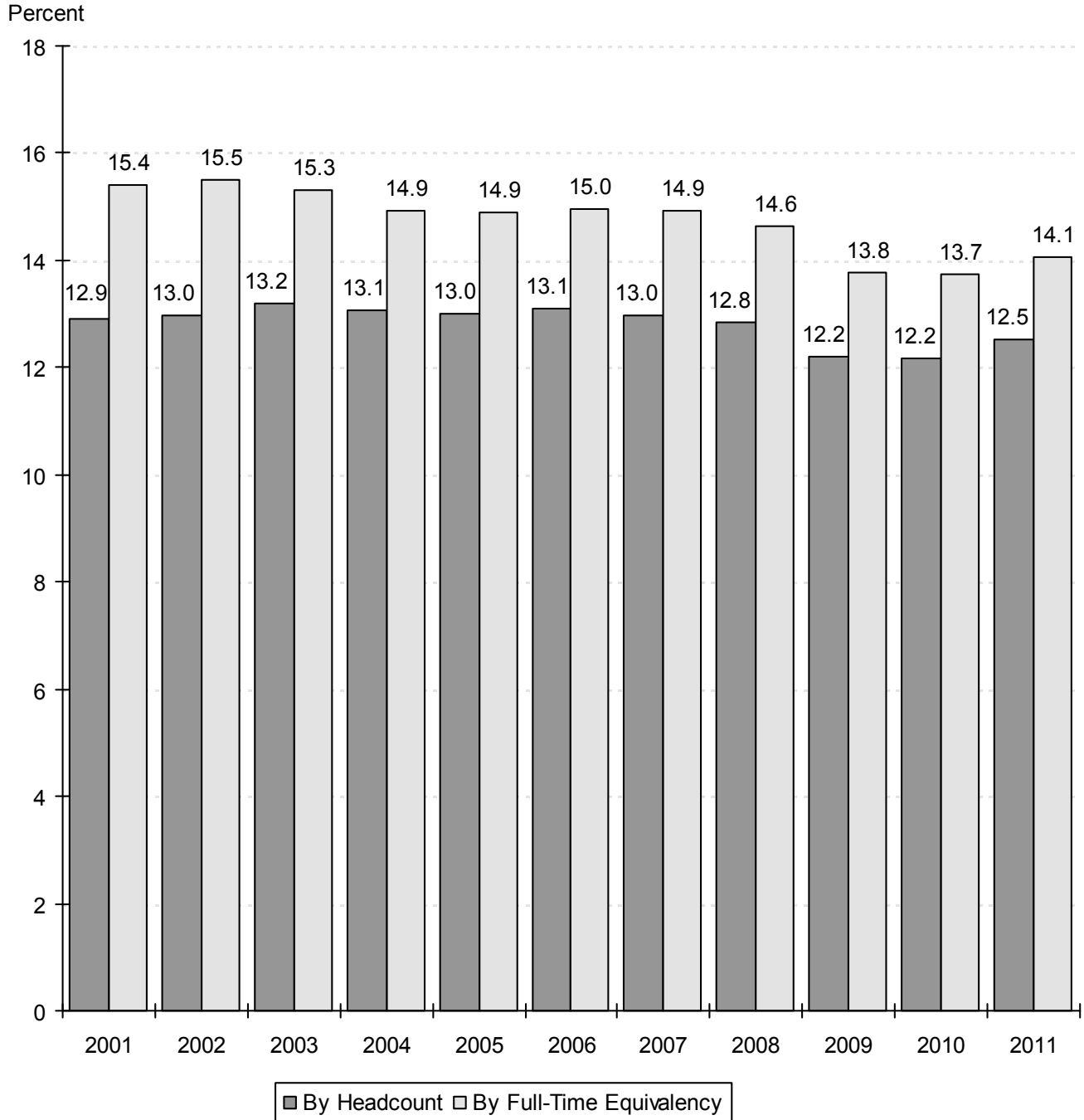
**ENROLLMENT BY ETHNICITY
OKLAHOMA STATE UNIVERSITY
FALL SEMESTERS 2001 THROUGH 2011**

Fall Semester	White		African American		Native American		Hispanic		Asian		Pacific Islander		Multiracial		International		Unknown		Total
	Number	%	Number	%	Number	%	Number	%	Number	%	Number	%	Number	%	Number	%	Number	%	
2001	16,753	76.6%	720	3.3%	1,656	7.6%	400	1.8%	379	1.7%	N/A	N/A	N/A	N/A	1,964	9.0%	N/A	N/A	21,872
2002	17,475	76.0%	766	3.3%	1,784	7.8%	415	1.8%	375	1.6%	N/A	N/A	N/A	N/A	2,177	9.5%	N/A	N/A	22,992
2003	17,905	76.0%	778	3.3%	1,838	7.8%	444	1.9%	371	1.6%	N/A	N/A	N/A	N/A	2,235	9.5%	N/A	N/A	23,571
2004	17,943	75.9%	918	3.9%	1,896	8.0%	447	1.9%	389	1.6%	N/A	N/A	N/A	N/A	2,033	8.6%	N/A	N/A	23,626
2005	17,894	76.3%	917	3.9%	1,973	8.4%	523	2.2%	388	1.7%	N/A	N/A	N/A	N/A	1,766	7.5%	N/A	N/A	23,461
2006	17,769	76.2%	959	4.1%	1,990	8.5%	533	2.3%	411	1.8%	N/A	N/A	N/A	N/A	1,645	7.1%	N/A	N/A	23,307
2007	17,443	75.8%	923	4.0%	1,993	8.7%	525	2.3%	388	1.7%	N/A	N/A	N/A	N/A	1,733	7.5%	N/A	N/A	23,005
2008	17,172	75.4%	930	4.1%	1,964	8.6%	566	2.5%	386	1.7%	N/A	N/A	N/A	N/A	1,750	7.7%	N/A	N/A	22,768
2009	17,297	75.7%	929	4.1%	1,915	8.4%	555	2.4%	363	1.6%	N/A	N/A	N/A	N/A	1,786	7.8%	N/A	N/A	22,845
2010	17,599	74.8%	1,029	4.4%	2,032	8.6%	594	2.5%	399	1.7%	N/A	N/A	N/A	N/A	1,869	7.9%	N/A	N/A	23,522
2011*	17,109	70.6%	1,066	4.4%	1,506	6.2%	930	3.8%	366	1.5%	4	0.0%	1301	5.4%	1,661	6.9%	288	1.2%	24,231

Note: This table includes professional students and OSU-Tulsa students for all years listed. Student Profile books prior to Fall 2003 do not contain OSU-Tulsa students on this page.

* Ethnicity codes were added in 2011 to provide separate categories for Pacific Islanders, Multiracial and Unknown.

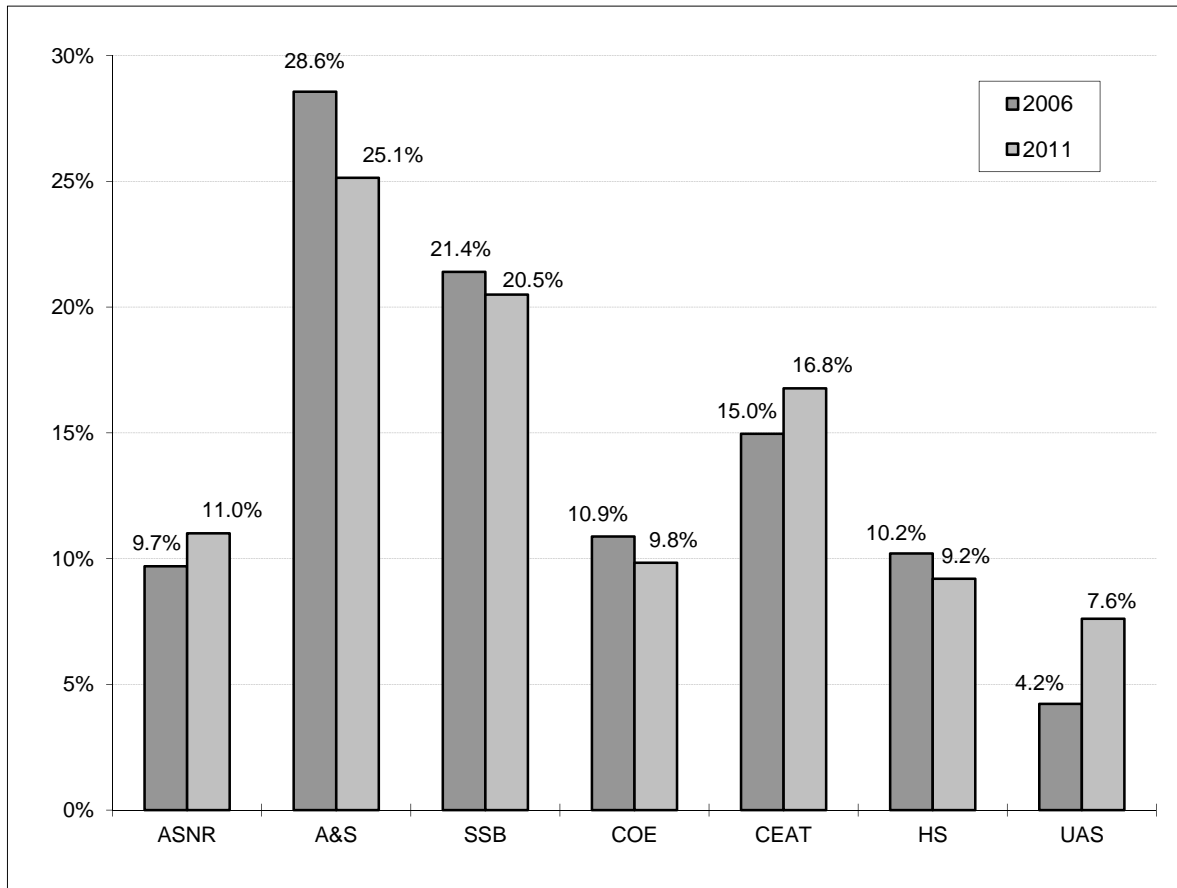
**OSU ENROLLMENT AS A PERCENT OF TOTAL ENROLLMENT
IN THE OKLAHOMA STATE SYSTEMS (PUBLIC)
OKLAHOMA STATE UNIVERSITY
FALL SEMESTERS 2001 THROUGH 2011**



Source: Preliminary Enrollment Report for Oklahoma Higher Education Fall 2011,
Oklahoma State Regents for Higher Education.

Note: Total Enrollment in the Oklahoma State Systems (Public) excludes interns and residents. Student Profile books prior to Fall 2008 included interns and residents in the total headcount enrollment.

**COMPARISON OF DISTRIBUTION OF UNDERGRADUATE MAJORS BY COLLEGE
OKLAHOMA STATE UNIVERSITY
FALL SEMESTERS 2006 AND 2011**



**UNDERGRADUATE MAJORS BY COLLEGE
OKLAHOMA STATE UNIVERSITY
FALL SEMESTERS 2006 THROUGH 2011**

Year	Ag. Sci. & Nat. Res.	Arts & Sciences	Spears Sch. of Bus.	Education	Engr., Arch., & Tech.	Human Sciences	Univ. Acad. Services	Total
2006	1,829	5,352	4,010	2,039	2,804	1,911	792	18,737
2007	1,933	5,038	4,019	1,922	2,790	1,939	727	18,368
2008	1,907	4,857	3,927	1,911	2,780	1,823	781	17,986
2009	1,937	4,709	3,747	1,919	2,917	1,776	844	17,849
2010	1,974	4,817	3,773	1,896	3,081	1,685	971	18,197
2011	2,093	4,779	3,895	1,870	3,187	1,739	1,446	19,009

Note: Students are reported in the college in which they are enrolled. This page includes students enrolled at OSU-Tulsa. Student Profile books prior to Fall 2003 do not contain OSU-Tulsa students on this page.

**ENROLLMENT CHANGES
OKLAHOMA STATE UNIVERSITY
FALL SEMESTERS 2006 AND 2011**

	2006	2011	% Change
<u>UNDERGRADUATE MAJORS</u>			
Agricultural Sciences & Natural Resources	1,829	2,093	14.4%
Arts & Sciences	5,352	4,779	-10.7%
Spears School of Business	4,010	3,895	-2.9%
Education	2,039	1,870	-8.3%
Engineering, Architecture, & Technology	2,804	3,187	13.7%
Human Sciences	1,911	1,739	-9.0%
University Academic Services	792	1,446	82.6%
<u>AGE</u>			
18 & Under	1,816	2,235	23.1%
19	3,022	3,435	13.7%
20	3,079	3,212	4.3%
21	3,348	3,167	-5.4%
22	2,974	2,697	-9.3%
23-29	5,938	6,209	4.6%
30-39	1,852	2,084	12.5%
40 & Over	1,278	1,192	-6.7%
<u>CLASSIFICATION</u>			
New Freshmen	3,222	3,848	19.4%
Other Freshmen	946	782	-17.3%
Sophomores*	4,195	4,053	-3.4%
Juniors	4,904	4,693	-4.3%
Seniors	5,333	5,386	1.0%
Specials	619	563	-9.0%
Graduates	3,780	4,557	20.6%
Professional	308	349	13.3%
<u>RESIDENT STATUS</u>			
In-State	17,955	17,202	-4.2%
Out-of-State	3,707	5,368	44.8%
International	1,645	1,661	1.0%
<u>ETHNICITY</u>			
White	17,769	17,109	-3.7%
African American	959	1,066	11.2%
Native American	1,990	1,506	-24.3%
Hispanic	533	930	74.5%
Asian	411	366	-10.9%
Pacific Islander	N/A	4	N/A
Multiracial	N/A	1,301	N/A
International	1,645	1,661	1.0%
Unknown	N/A	288	N/A
<u>GENDER</u>			
Female	11,456	11,725	2.3%
Male	11,851	12,506	5.5%
OVERALL ENROLLMENT	23,307	24,231	4.0%

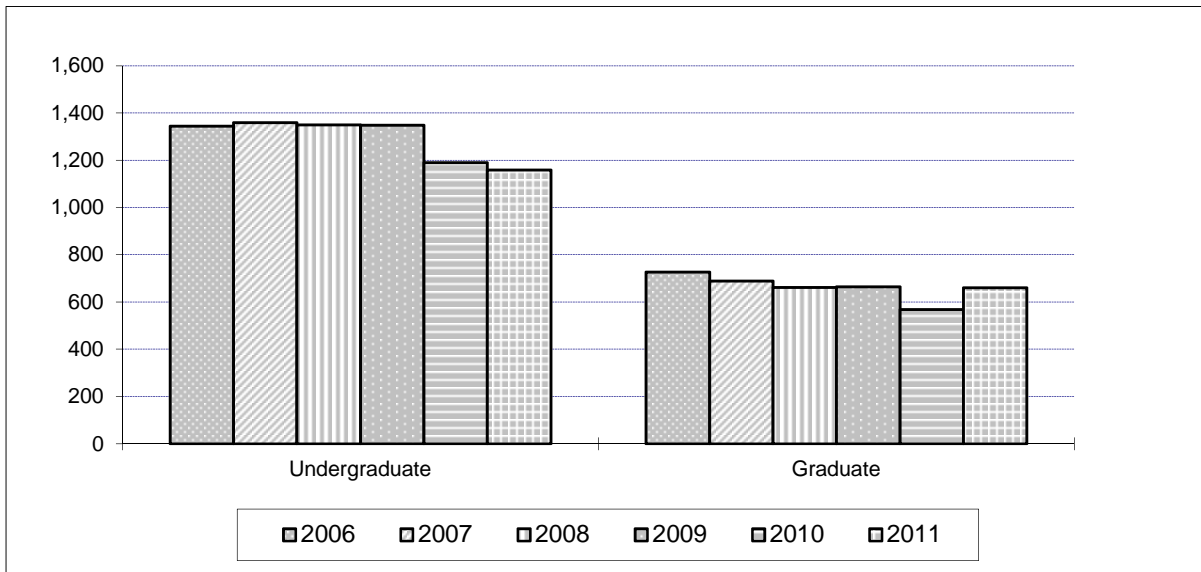
Note: This table includes professional students and OSU-Tulsa students. Student Profile books prior to Fall 2003 do not contain OSU-Tulsa students on this page.

* 48 sophomores for 2011 and 13 sophomores and 1 junior for 2006 are in their first year of college and thus listed in other tables as new freshmen.

* Student Profile books prior to Fall 2003 include non-degree-seeking new freshmen in the New Freshmen counts

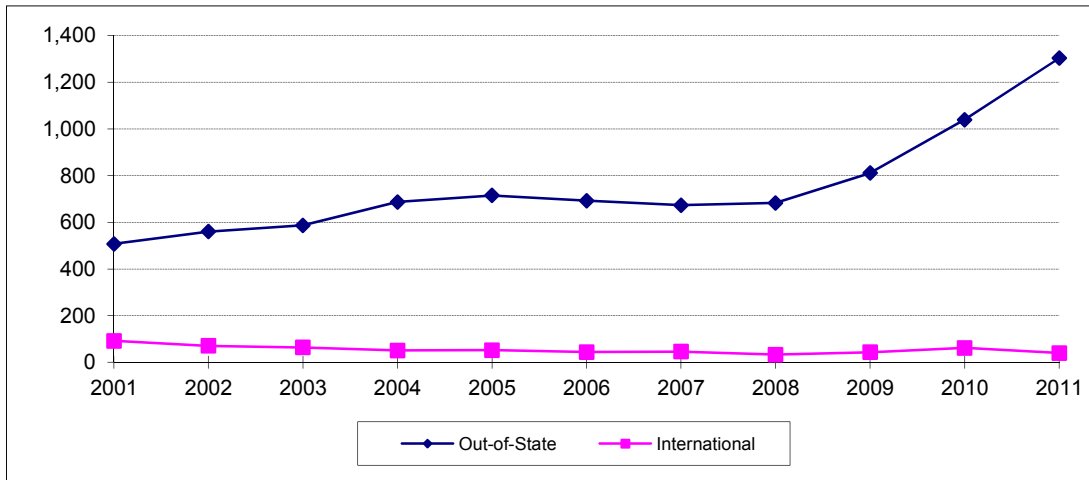
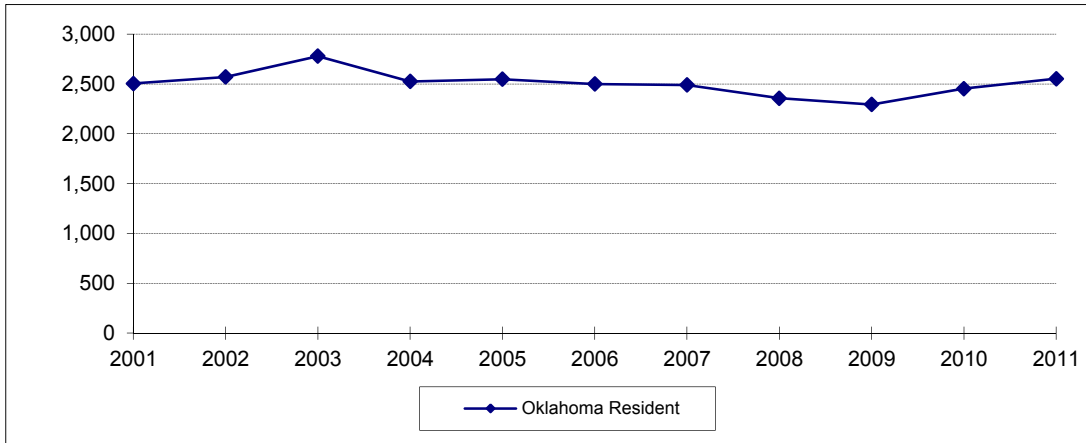
* Student Profile books prior to Fall 2006 include new concurrent high school students in the New Freshmen counts.

**ENROLLMENT CHANGES
OKLAHOMA STATE UNIVERSITY AT TULSA
FALL SEMESTERS 2006 THROUGH 2011**



Classification	2006	2007	2008	2009	2010	2011	% Change 2010 to 2011
Undergraduate	1,345	1,360	1,350	1,349	1,190	1,159	-2.6%
Freshman	25	14	10	20	3	4	33.3%
Sophomore	96	128	103	121	77	67	-13.0%
Junior	521	515	534	484	442	405	-8.4%
Senior	675	673	659	691	642	665	3.6%
Special	28	30	44	33	26	18	-30.8%
Graduate	727	689	662	665	569	661	16.2%
Special	191	160	143	164	119	121	1.7%
Master	421	417	399	381	329	418	27.1%
Doctorate	115	112	120	120	121	122	0.8%
Grand Total	2,072	2,049	2,012	2,014	1,759	1,820	3.5%

**NEW FRESHMEN ENROLLMENT BY RESIDENCY
OKLAHOMA STATE UNIVERSITY
FALL SEMESTERS 2001 THROUGH 2011**



Fall Semester	Oklahoma Resident	Out-of-State	International	Total
2001	2,504	507	92	3,103
2002	2,570	560	71	3,201
2003	2,779	587	64	3,430
2004	2,526	687	51	3,264
2005	2,548	715	52	3,315
2006	2,500	692	44	3,236
2007	2,490	673	46	3,209
2008	2,357	683	33	3,073
2009	2,294	811	43	3,148
2010	2,453	1,039	62	3,554
2011	2,553	1,303	40	3,896

Note: This table includes students at OSU-Tulsa, but does not include non-degree-seeking new freshmen and new concurrent high school students.

Student Profile books prior to Fall 2003 do not contain OSU-Tulsa students on this page.

Student Profile books prior to Fall 2006 contain new concurrent high school students on this page.

