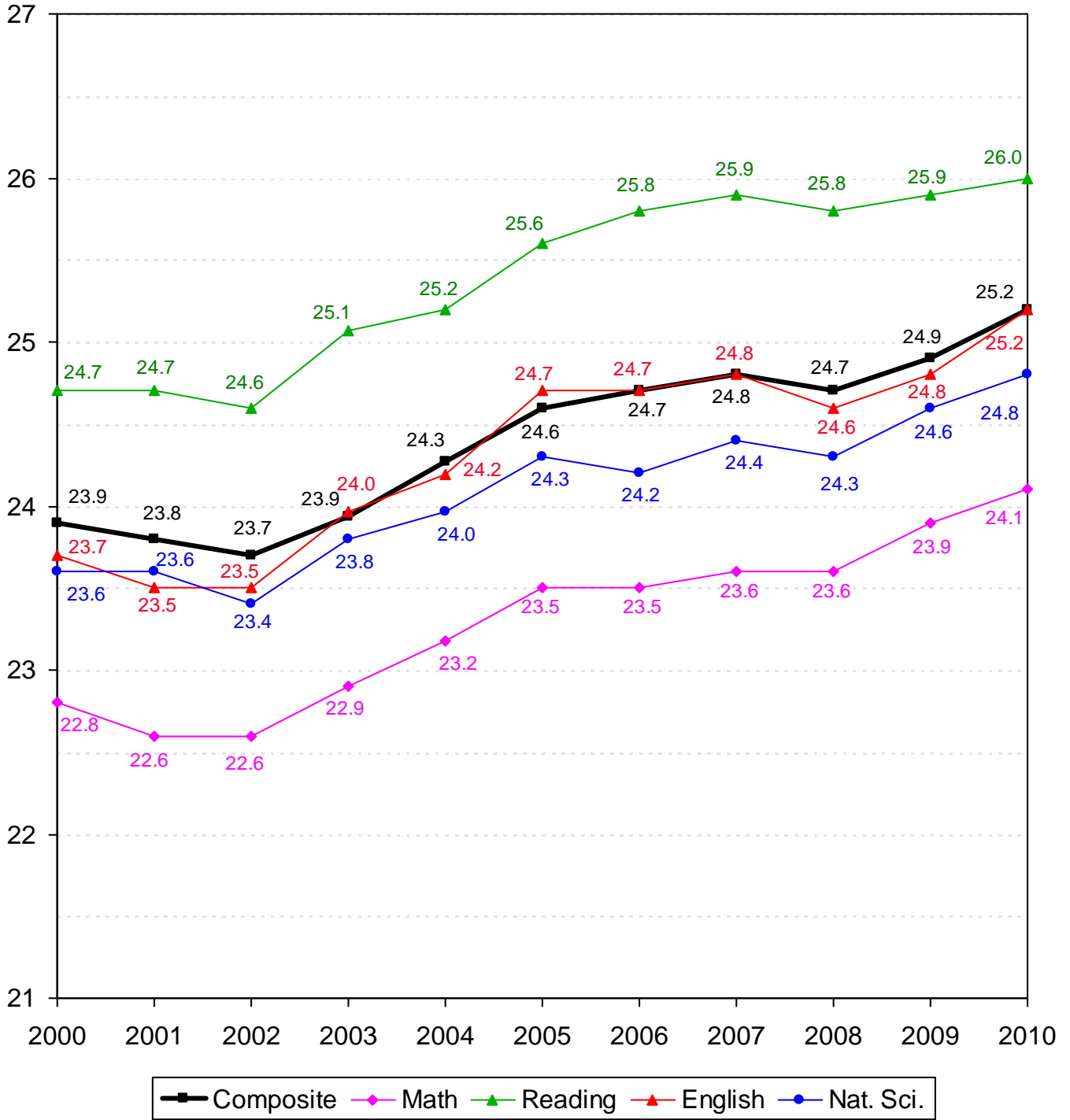


ACADEMIC INFORMATION

**TEN-YEAR COMPARISON OF ACT SCORES FOR NEW FRESHMEN
OKLAHOMA STATE UNIVERSITY
FALL SEMESTERS 2000 THROUGH 2010**



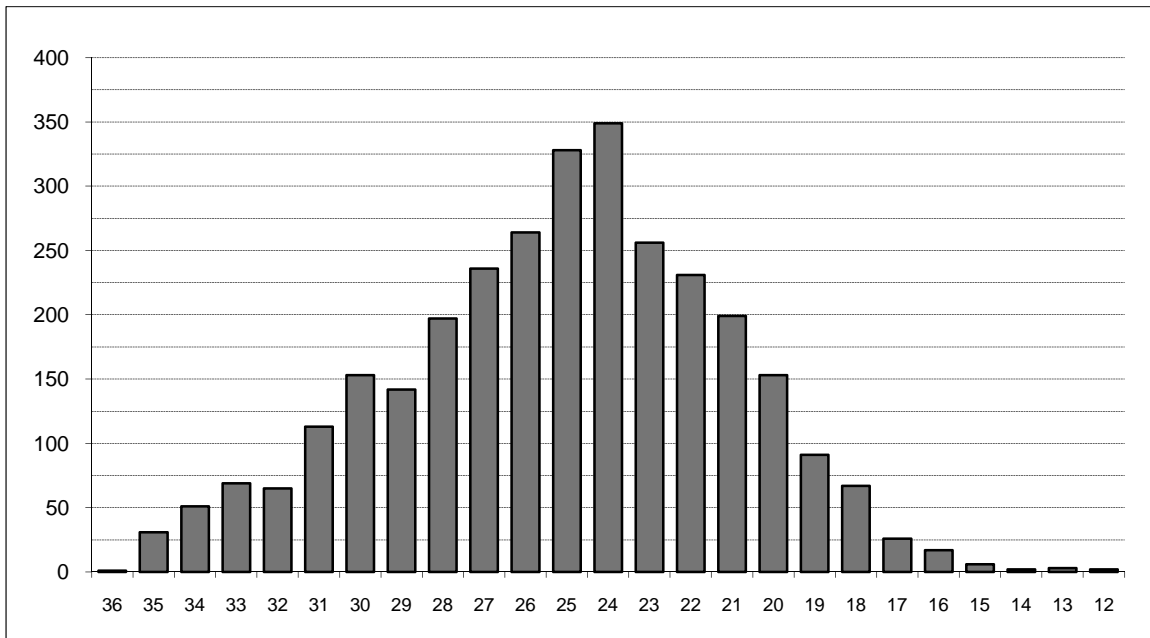
Note: Averages reflect the highest value for each subscore that a student received. Beginning in 2003, ACT composite scores are the average of the highest of each subscore received.

**COMPOSITE ACT AND SAT AVERAGES OF NEW FRESHMEN BY COLLEGE
OKLAHOMA STATE UNIVERSITY
FALL SEMESTER 2010**

College	ACT		SAT	
	Count	Composite	Count	Composite
Ag. Sciences & Natural Res.	360	25.1	34	1,124
Arts & Sciences	851	25.6	121	1,169
Spears School of Business	429	25.5	96	1,162
Education	255	24.1	23	1,179
Engineering & Architecture	540	27.6	101	1,230
Div. of Technology	51	24.9	11	1,156
Human Environmental Sci.	225	24.8	21	1,160
Overall College Average	2,711	25.7	407	1,178
University Academic Services	341	21.0	75	951
Overall Average	3,052	25.2	482	1,143

Note: Composite scores in this table are calculated using the highest subscores obtained for each student. If students have taken both the ACT and the SAT, only the higher score is reported.

**DISTRIBUTION OF NEW FRESHMEN BY COMPOSITE ACT SCORE
OKLAHOMA STATE UNIVERSITY
FALL SEMESTER 2010**



Composite ACT Score	Female	Male	Total	Percent	Cumulative Percent
36	1	0	1	0.03%	0.03%
35	4	27	31	1.02%	1.05%
34	12	39	51	1.67%	2.72%
33	29	40	69	2.26%	4.98%
32	32	33	65	2.13%	7.11%
31	48	65	113	3.70%	10.81%
30	72	81	153	5.01%	15.83%
29	76	66	142	4.65%	20.48%
28	109	88	197	6.45%	26.93%
27	112	124	236	7.73%	34.67%
26	142	122	264	8.65%	43.32%
25	174	154	328	10.75%	54.06%
24	194	155	349	11.44%	65.50%
23	141	115	256	8.39%	73.89%
22	146	85	231	7.57%	81.45%
21	126	73	199	6.52%	87.98%
20	97	56	153	5.01%	92.99%
19	57	34	91	2.98%	95.97%
18	37	30	67	2.20%	98.17%
17	16	10	26	0.85%	99.02%
16	9	8	17	0.56%	99.57%
15	3	3	6	0.20%	99.77%
14	1	1	2	0.07%	99.84%
13	2	1	3	0.10%	99.93%
12	1	1	2	0.07%	100.0%
Total	1,641	1,411	3,052	100.0%	100.0%

Note: ACT scores are only included in this table if they represent the highest test score available for the student. If the student's SAT score (converted to an ACT equivalent) is higher, then the ACT score is not included here.

**ACT AND SAT AVERAGES OF NEW FRESHMEN BY ETHNICITY AND GENDER
OKLAHOMA STATE UNIVERSITY
FALL SEMESTER 2010**

Ethnicity	ACT		SAT	
	Count	Composite	Count	Composite
White	2,362	25.5	366	1,154
African American	174	21.7	30	1,019
Native American	355	24.8	25	1,150
Hispanic	68	24.5	23	1,172
Asian	76	24.5	11	1,151
Gender				
Female	1,641	24.7	205	1,134
Male	1,411	25.7	277	1,150
Total	3,052	25.2	482	1,143

Note: Composite scores in this table are calculated using the highest subscores obtained for each student. If students have taken both the ACT and the SAT, only the higher score is reported.

**OKLAHOMA HIGH SCHOOL ACT PARTICIPATION STATISTICS
OKLAHOMA STATE UNIVERSITY
2005 THROUGH 2010**

	2005		2006		2007		2008		2009		2010	
High School Graduates in Oklahoma ¹	37,446		37,940		38,314		38,915		38,468		38,522	
Number of Oklahoma H.S. Students Taking ACT ^{2*}	26,297		26,425		26,360		27,131		27,054		28,343	
Total ACT Scores Received by OSU ^{2**}	9,506		9,256		9,167		8,135		7,564		7,946	
1st Choice / % of Scores Received	3,405	35.8%	3,281	35.4%	3,421	37.3%	2,942	36.2%	2,671	35.3%	2,908	36.6%
2nd - 6th Choices / % of Scores Received	6,101	64.2%	5,975	64.6%	5,746	62.7%	5,193	63.8%	4,893	64.7%	5,038	63.4%
Applications Received by OSU	6,533		6,730		6,415		6,406		7,561		8,696	
New Freshmen Accepted by OSU	5,719		5,853		5,651		5,702		6,537		7,079	
% of Applications Received	87.5%		87.0%		88.1%		89.0%		86.5%		81.4%	
New Freshmen Enrolled at OSU	3,315		3,236		3,209		3,073		3,148		3,554	
% of Freshmen Accepted	58.0%		55.3%		56.8%		53.9%		48.2%		50.2%	

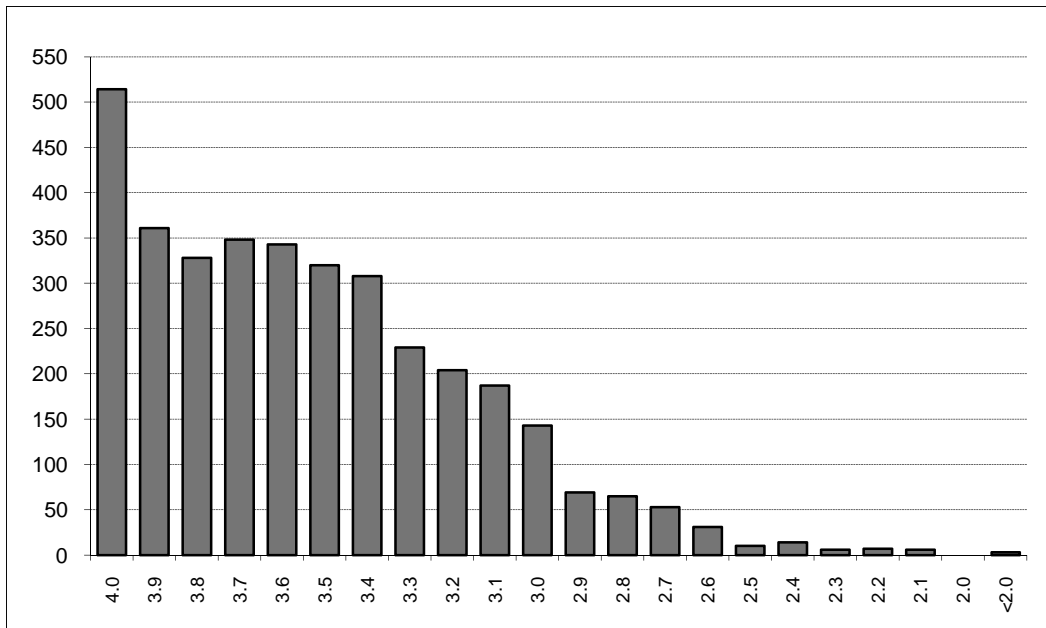
¹Source - Oklahoma High School Graduates - Projections, Oklahoma State Regents for Higher Education (Projections for 2010)

²Source - ACT Profile Report - State, Graduating Class 2010, Oklahoma

*This includes only Oklahoma high school graduates who took the ACT prior to graduation in the year indicated.

**This includes only those students eligible for college enrollment in the fall semester of the year indicated and does not include multiple ACT scores for any one student. Student Profiles prior to Fall 2003 may include multiple ACT scores per person.

**DISTRIBUTION OF FRESHMEN HIGH SCHOOL GRADE POINT AVERAGES
OKLAHOMA STATE UNIVERSITY
FALL SEMESTER 2010**

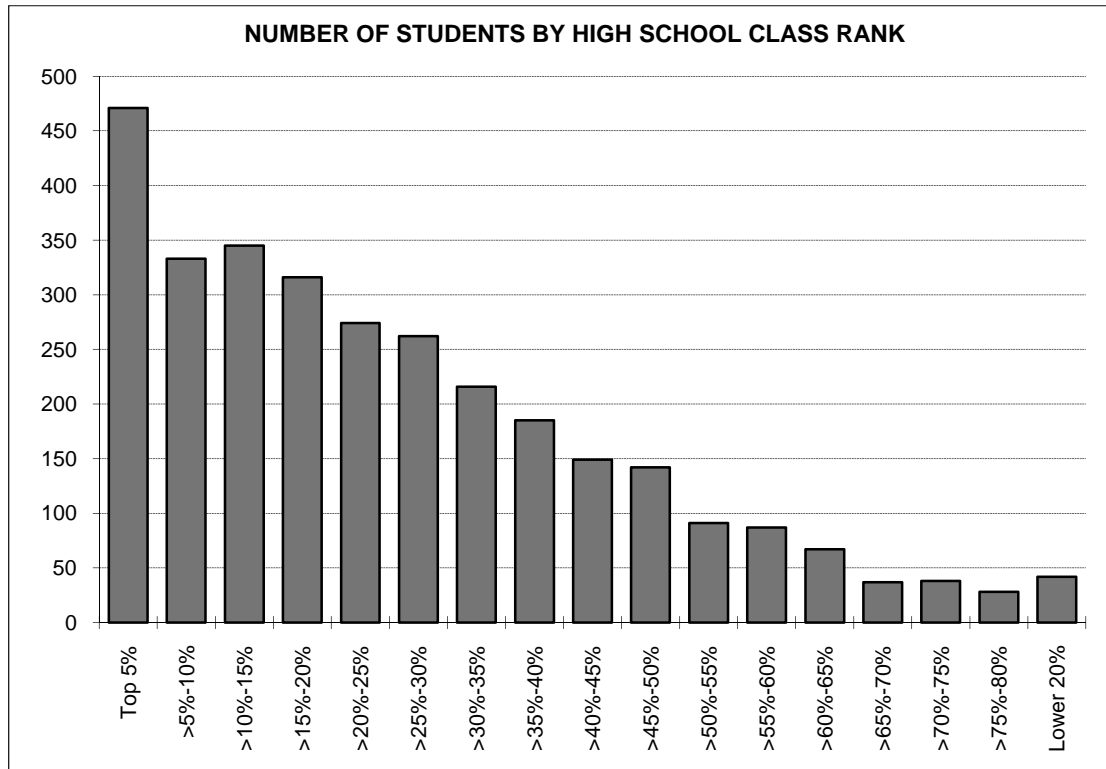


GPA	Number	Cumulative Number	Percent	Cumulative Percent
4.0	514	514	14.48%	14.48%
3.9	361	875	10.17%	24.65%
3.8	328	1,203	9.24%	33.90%
3.7	348	1,551	9.81%	43.70%
3.6	343	1,894	9.66%	53.37%
3.5	320	2,214	9.02%	62.38%
3.4	308	2,522	8.68%	71.06%
3.3	229	2,751	6.45%	77.51%
3.2	204	2,955	5.75%	83.26%
3.1	187	3,142	5.27%	88.53%
3.0	143	3,285	4.03%	92.56%
2.9	69	3,354	1.94%	94.51%
2.8	65	3,419	1.83%	96.34%
2.7	53	3,472	1.49%	97.83%
2.6	31	3,503	0.87%	98.70%
2.5	10	3,513	0.28%	98.99%
2.4	14	3,527	0.39%	99.38%
2.3	6	3,533	0.17%	99.55%
2.2	7	3,540	0.20%	99.75%
2.1	6	3,546	0.17%	99.92%
2.0	0	3,546	0.00%	99.92%
<2.0	3	3,549	0.08%	100.0%
Total	3,549	3,549	100.0%	100.0%

Note: 5 new freshmen (including international, home schooled, and adult admission students) did not supply a high school GPA.

The average high school GPA reported was 3.52. The average high school core GPA calculated was 3.57.

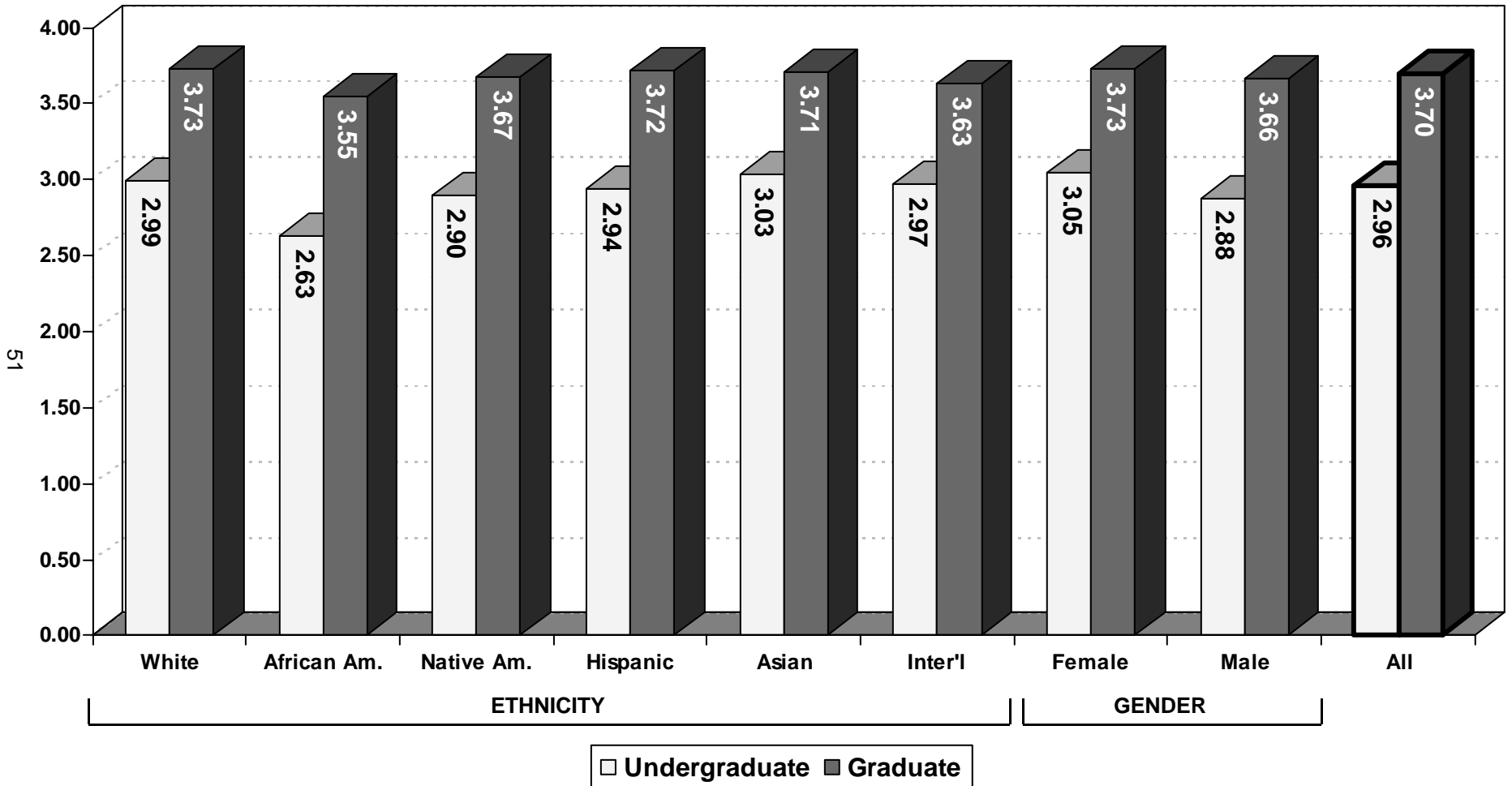
**RANK IN HIGH SCHOOL CLASS BY NUMBER OF NEW FRESHMEN & PERCENT IN EACH RANK
OKLAHOMA STATE UNIVERSITY
FALL SEMESTER 2010**



Rank	Number	Cumulative Number	Percent	Cumulative Percent
Top 5%	471	471	15.28%	15.28%
>5%-10%	333	804	10.80%	26.08%
>10%-15%	345	1,149	11.19%	37.27%
>15%-20%	316	1,465	10.25%	47.52%
>20%-25%	274	1,739	8.89%	56.41%
>25%-30%	262	2,001	8.50%	64.90%
>30%-35%	216	2,217	7.01%	71.91%
>35%-40%	185	2,402	6.00%	77.91%
>40%-45%	149	2,551	4.83%	82.74%
>45%-50%	142	2,693	4.61%	87.35%
>50%-55%	91	2,784	2.95%	90.30%
>55%-60%	87	2,871	2.82%	93.12%
>60%-65%	67	2,938	2.17%	95.30%
>65%-70%	37	2,975	1.20%	96.50%
>70%-75%	38	3,013	1.23%	97.73%
>75%-80%	28	3,041	0.91%	98.64%
Lower 20%	42	3,083	1.36%	100.0%

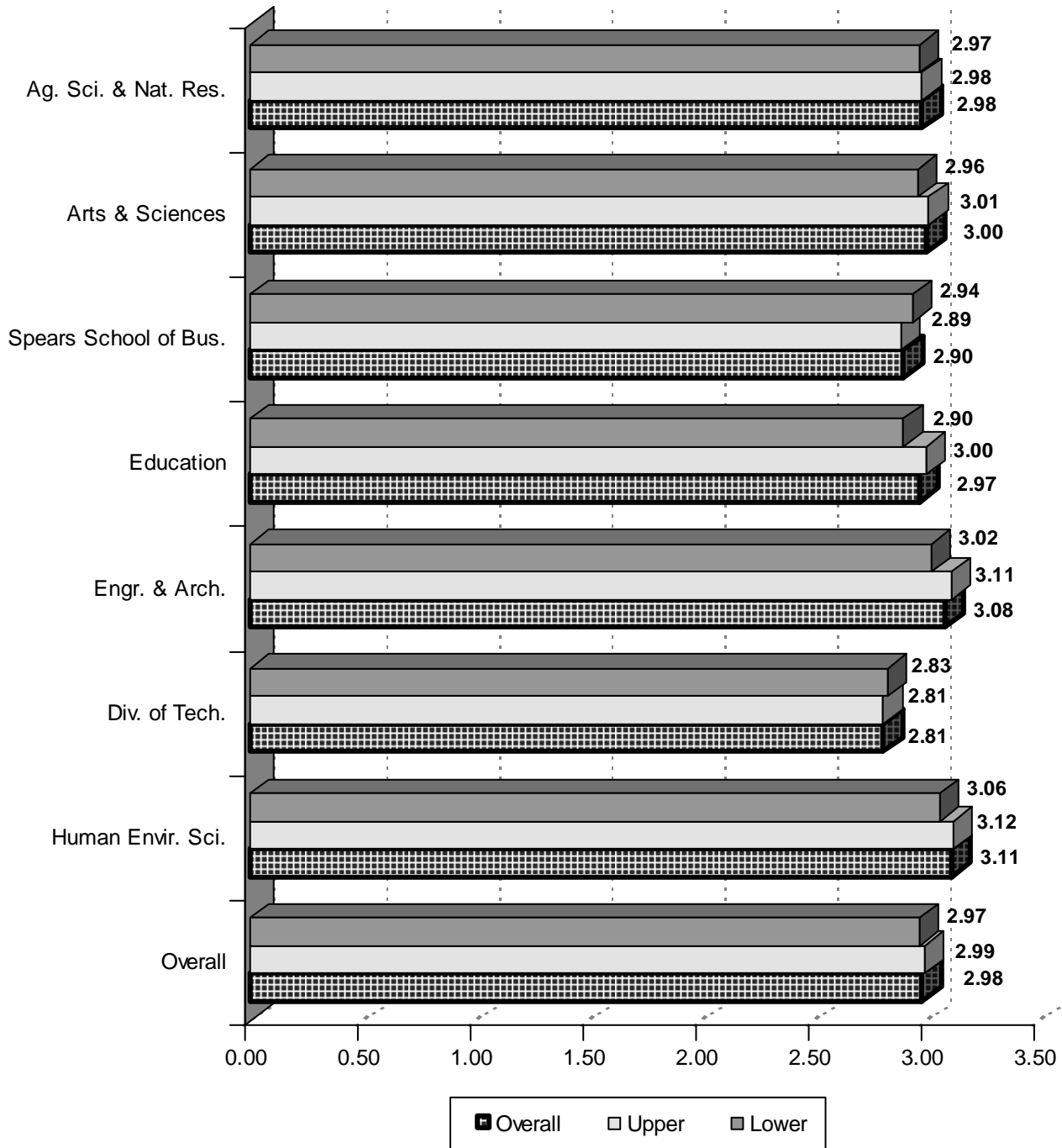
Note: 471 new freshmen (including international, home schooled, and adult admission students) did not supply a high school rank.

AVERAGE CUMULATIVE GRADE POINT AVERAGE BY ETHNICITY AND GENDER
OKLAHOMA STATE UNIVERSITY
FALL SEMESTER 2010



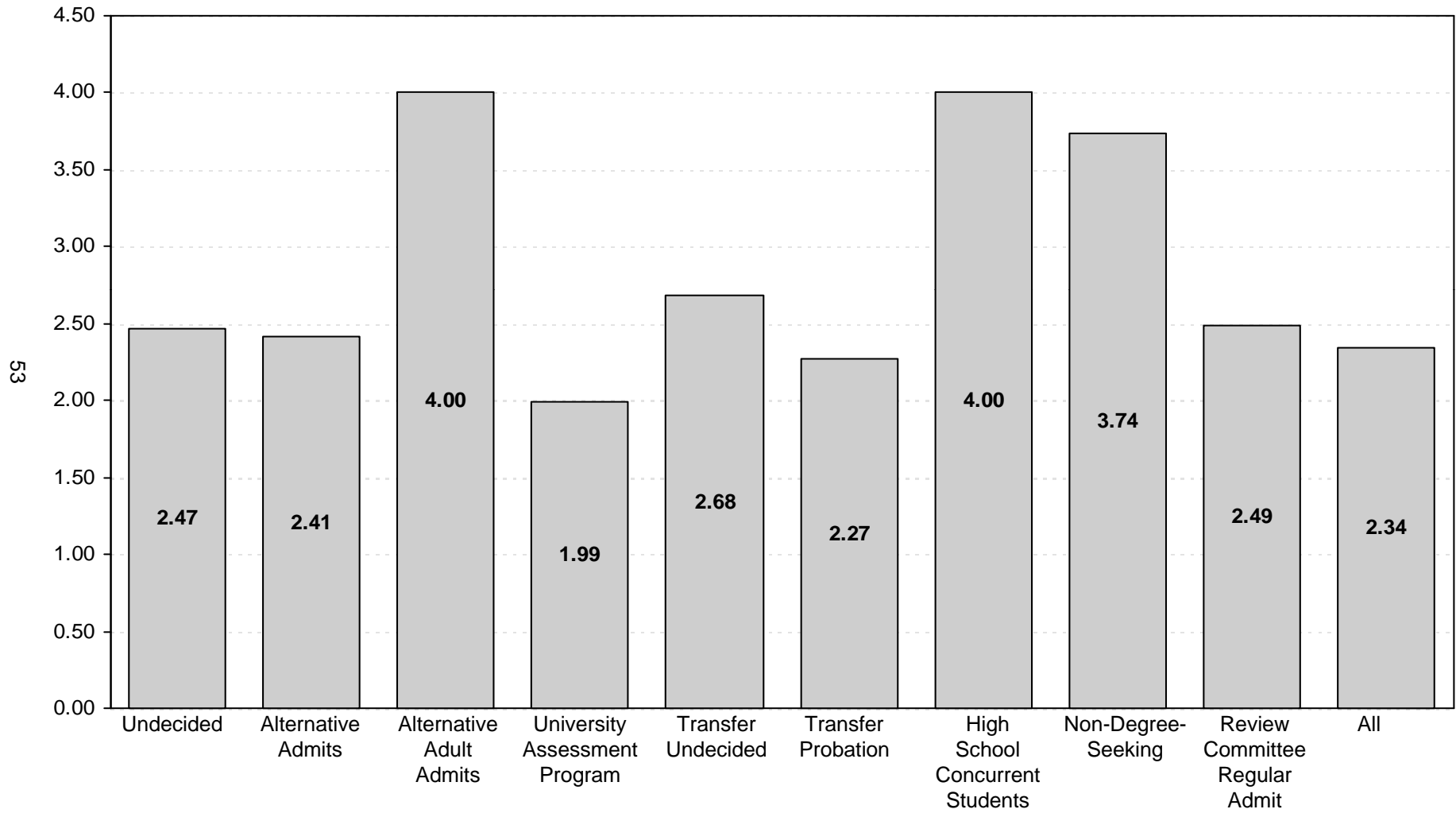
Note: The data presented above includes 12,823 undergraduates and 3,504 graduates for whom a cumulative GPA was reported. This chart excludes professional students, new transfers, and new freshmen, but includes students at OSU-Tulsa.

**AVERAGE CUMULATIVE GRADE POINT AVERAGE
OF UNDERGRADUATE STUDENTS BY COLLEGE AND DIVISION
OKLAHOMA STATE UNIVERSITY
FALL SEMESTER 2010**



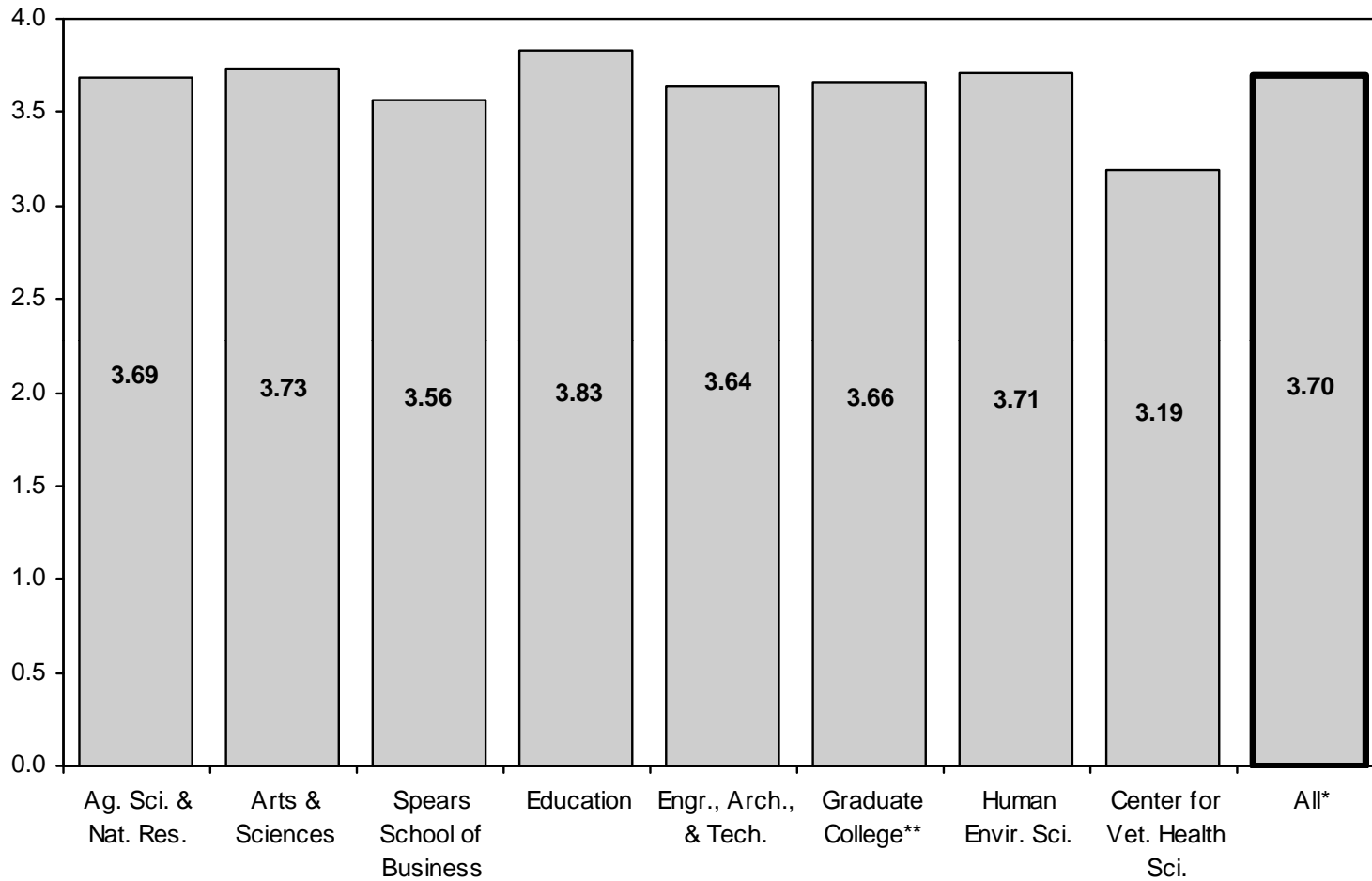
Note: This chart includes 12,395 undergraduates enrolled for Fall 2010 for whom a cumulative GPA was reported. This chart excludes professional students, new freshmen, new transfers, and University Academic Services, but includes students enrolled at OSU-Tulsa.

**AVERAGE CUMULATIVE GRADE POINT AVERAGE
OF UNIVERSITY ACADEMIC SERVICES STUDENTS
OKLAHOMA STATE UNIVERSITY
FALL SEMESTER 2010**



Note: This chart includes 428 students enrolled in University Academic Services in the Fall 2010 semester for whom a cumulative GPA was reported.

**AVERAGE CUMULATIVE GRADE POINT AVERAGE
OF GRADUATE STUDENTS BY COLLEGE
OKLAHOMA STATE UNIVERSITY
FALL SEMESTER 2010**

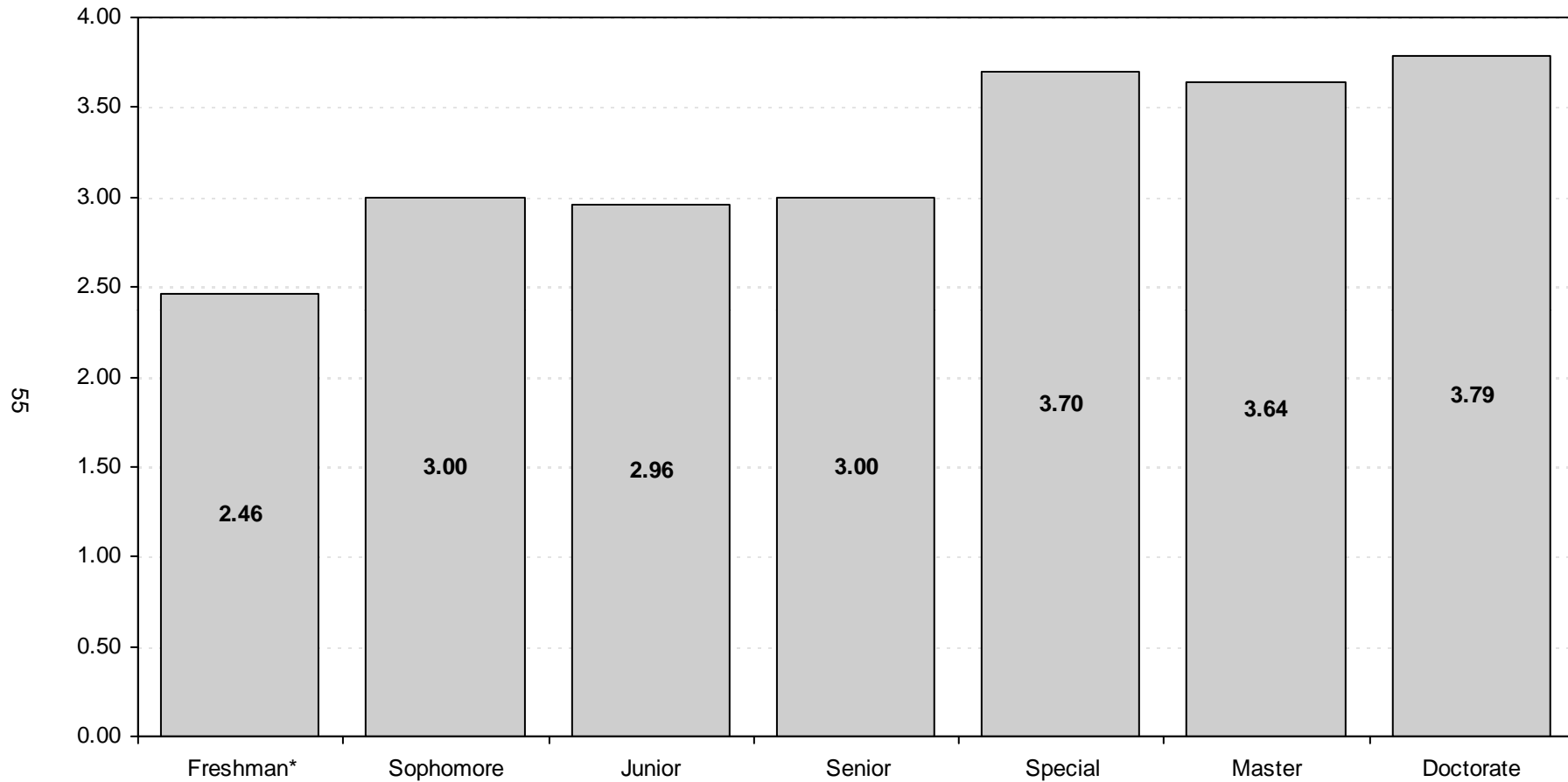


*Center for Veterinary Health Sciences' professional students are excluded from the overall average.

**Interdisciplinary graduate programs that do not have a specific area of specialization are reported in the Graduate College.

Note: This chart includes 3,504 graduate students and 253 professional students enrolled in the Fall 2010 semester for whom a cumulative GPA was reported. This chart does not include new transfer students but does include students enrolled at OSU-Tulsa.

**AVERAGE CUMULATIVE GRADE POINT AVERAGE
OF STUDENTS BY CLASS LEVEL
OKLAHOMA STATE UNIVERSITY
FALL SEMESTER 2010**



*Includes students enrolled previously who have earned fewer than 28 semester credit hours. This does not include Fall 2010 new freshmen.

Note: This chart includes 16,327 students enrolled in the Fall 2010 semester for whom a cumulative GPA was reported. This chart excludes professional students, new freshmen, and new transfer students, but includes students enrolled at OSU-Tulsa.