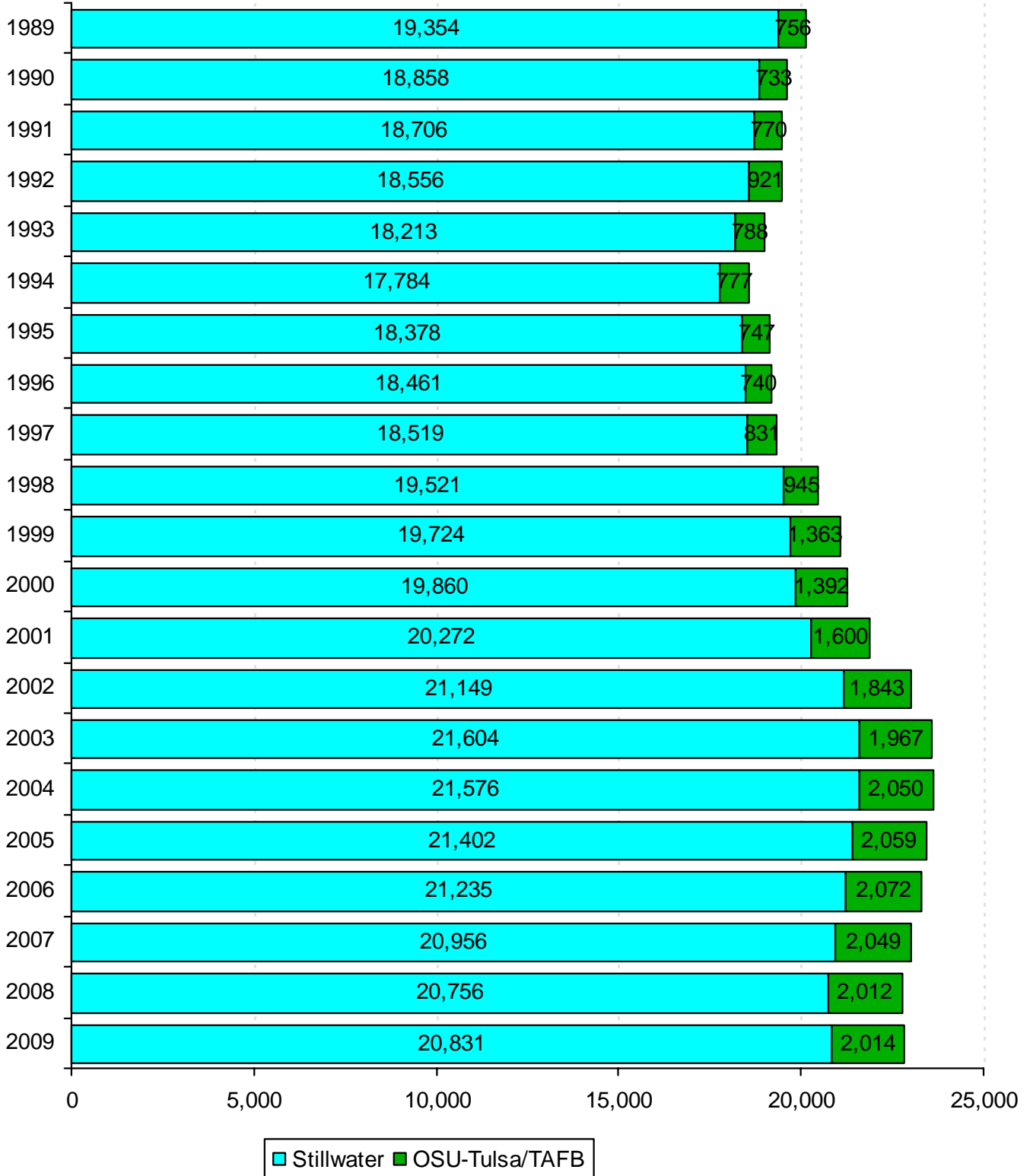


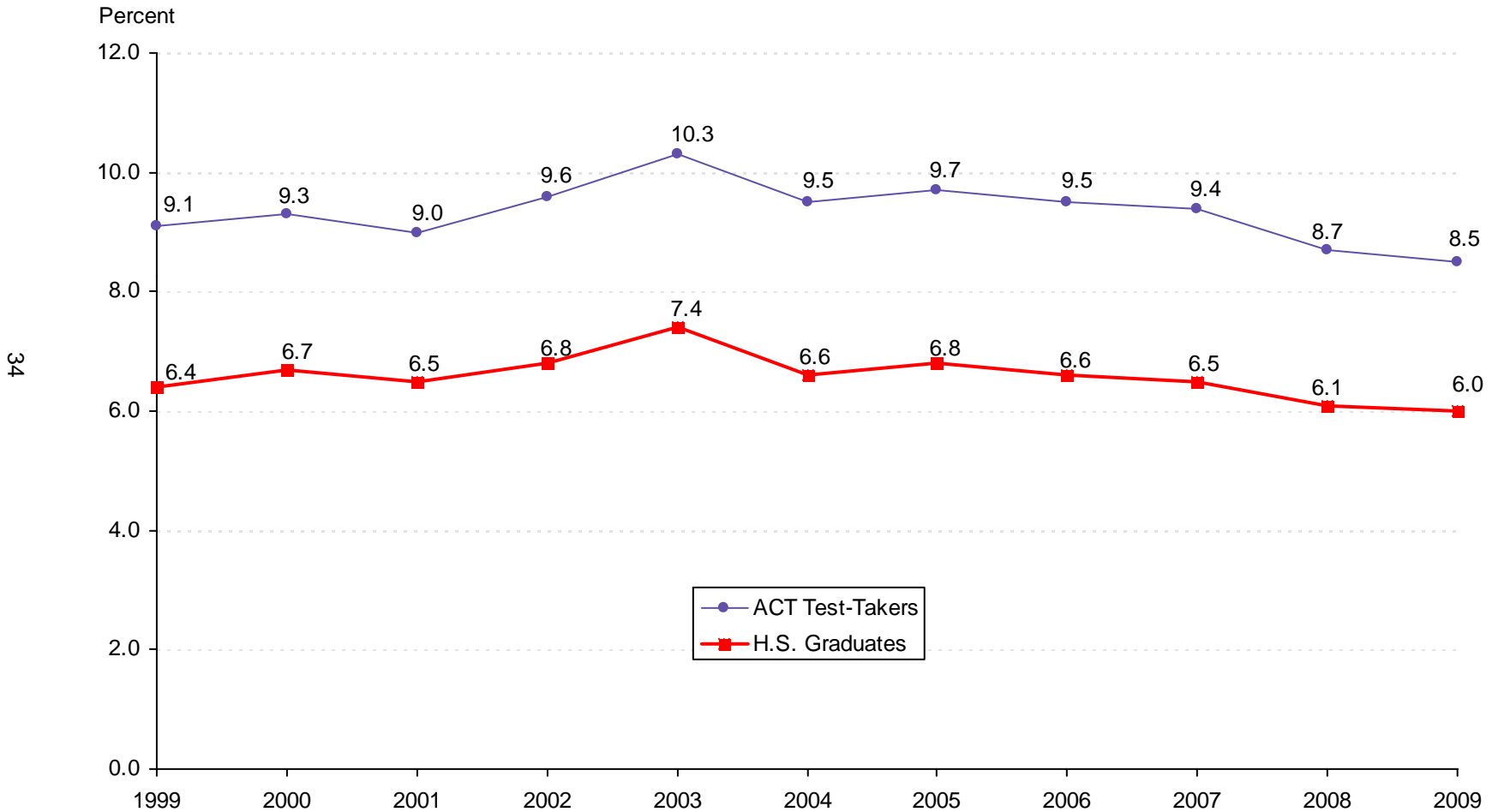
# ENROLLMENT TRENDS



**STILLWATER AND TULSA CAMPUS ENROLLMENT**  
**OKLAHOMA STATE UNIVERSITY**  
**FALL SEMESTERS 1989 THROUGH 2009**



**OKLAHOMA STATE UNIVERSITY SHARE OF THE MARKET**  
**RATIO OF BEGINNING RESIDENT FRESHMEN**  
**TO OKLAHOMA HIGH SCHOOL SPRING GRADUATES AND ACT TEST-TAKERS**  
**OKLAHOMA STATE UNIVERSITY**  
**FALL SEMESTERS 1999 THROUGH 2009**



*Note:* Total Oklahoma high school graduates for 2009 = 38,518; total Oklahoma ACT test-takers = 27,054. The beginning resident freshman count for all years include OSU-Tulsa students, but excludes non-degree-seeking and first time concurrent high school resident students. (See Page 43).

*Source:* Student Data Report, Oklahoma State Regents for Higher Education, and ACT High School Profile Report - State Composite for Oklahoma.

**ENROLLMENT BY TYPE OF ADMISSION  
OKLAHOMA STATE UNIVERSITY  
FALL SEMESTERS 1999 THROUGH 2009**

Fall	New Freshmen*	% Inc / Dec	Continuing	% Inc / Dec	Readmission	% Inc / Dec	New Transfer	% Inc / Dec	Non-Degree	% Inc / Dec	Concurrent	% Inc / Dec	Total	% Inc / Dec
1999	2,832		15,274		126		2,398		96		67		<b>20,793</b>	
2000	3,013	6.4%	14,501	-5.1%	971	670.6%	2,272	-5.3%	135	40.6%	68	1.5%	<b>20,960</b>	<b>0.8%</b>
2001	3,103	3.0%	14,933	3.0%	961	-1.0%	2,363	4.0%	153	13.3%	70	2.9%	<b>21,583</b>	<b>3.0%</b>
2002	3,201	3.2%	15,753	5.5%	1,089	13.3%	2,506	6.1%	84	-45.1%	67	-4.3%	<b>22,700</b>	<b>5.2%</b>
2003	3,430	7.2%	16,106	2.2%	941	-13.6%	2,675	6.7%	54	-35.7%	68	1.5%	<b>23,274</b>	<b>2.5%</b>
2004	3,264	-4.8%	16,274	1.0%	874	-7.1%	2,764	3.3%	87	61.1%	67	-1.5%	<b>23,330</b>	<b>0.2%</b>
2005	3,315	1.6%	16,180	-0.6%	780	-10.8%	2,754	-0.4%	80	-8.0%	56	-16.4%	<b>23,165</b>	<b>-0.7%</b>
2006	3,236	-2.4%	16,189	0.1%	648	-16.9%	2,789	1.3%	57	-28.8%	80	42.9%	<b>22,999</b>	<b>-0.7%</b>
2007	3,209	-0.8%	16,016	-1.1%	590	-9.0%	2,715	-2.7%	69	21.1%	94	17.5%	<b>22,693</b>	<b>-1.3%</b>
2008	3,073	-4.2%	15,812	-1.3%	621	5.3%	2,658	-2.1%	192	178.3%	93	-1.1%	<b>22,449</b>	<b>-1.1%</b>
2009	3,148	2.4%	15,564	-1.6%	709	14.2%	2,852	7.3%	164	-14.6%	79	-15.1%	<b>22,516</b>	<b>0.3%</b>

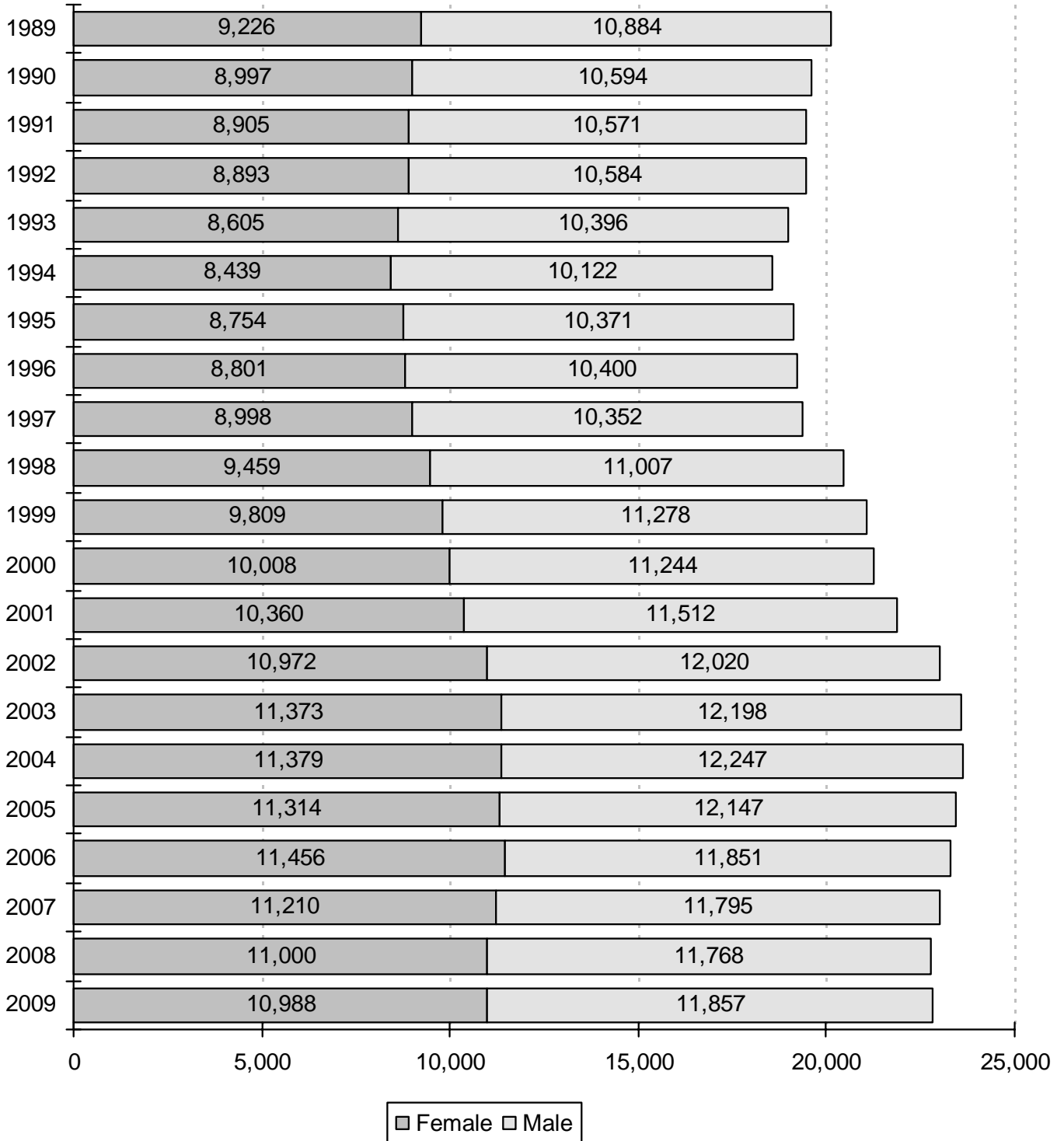
35

Note: This table excludes 329 professional students for Fall 2009. However, this table does include OSU-Tulsa figures for all years listed and will not match the figures for this page in the Student Profile books prior to Fall 2003. The percentage increase or decrease in enrollment between two semesters is shown in the "% Inc / Dec" column. Example: There was a 2.4% increase in enrollment of new freshmen from Fall 2008 to Fall 2009.

\* New freshmen counts exclude concurrent high school students and non-degree-seeking students for all years listed.

Student Profile books prior to Fall 2006 include new concurrent high school students in the new freshmen counts.

**ENROLLMENT BY GENDER**  
**OKLAHOMA STATE UNIVERSITY**  
**FALL SEMESTERS 1989 THROUGH 2009**



*Note:* This chart includes professional students and OSU-Tulsa students for all years listed. Hence, these figures will not match the figures in the Student Profile books prior to 2003.

**ENROLLMENT BY CLASSIFICATION  
OKLAHOMA STATE UNIVERSITY  
FALL SEMESTERS 1989 THROUGH 2009**

Year	Freshmen	Sophomores	Juniors	Seniors	Special Undergrads	Graduates	Professional	On-Campus Total	Off-Campus OSU-T & TAFB	Grand Total
1989	4,036	3,791	3,809	4,004	1	3,454	259	19,354	756	20,110
1990	3,526	3,787	3,693	4,037	0	3,561	254	18,858	733	19,591
1991	3,321	3,431	3,996	4,102	3	3,601	252	18,706	770	19,476
1992	3,251	3,294	3,678	4,285	20	3,759	269	18,556	921	19,477
1993	3,161	3,200	3,727	4,195	22	3,636	272	18,213	788	19,001
1994	3,187	3,034	3,612	4,215	41	3,424	271	17,784	777	18,561
1995	3,446	3,040	3,646	4,273	34	3,664	275	18,378	747	19,125
1996	3,427	3,226	3,508	4,311	47	3,658	284	18,461	740	19,201
1997	3,378	3,308	3,683	4,168	68	3,625	289	18,519	831	19,350
1998	3,535	3,464	3,874	4,379	70	3,902	297	19,521	945	20,466
1999	4,068	3,543	3,923	4,235	45	3,616	294	19,724	1,363	21,087
2000	4,148	3,765	3,834	4,339	46	3,436	292	19,860	1,392	21,252
2001	4,361	3,886	3,925	4,234	51	3,526	289	20,272	1,600	21,872
2002	4,473	3,944	4,115	4,458	49	3,818	292	21,149	1,843	22,992
2003	4,649	4,083	4,197	4,548	14	3,816	297	21,604	1,967	23,571
2004	4,462	4,056	4,266	4,604	105	3,787	296	21,576	2,050	23,626
2005	4,325	4,035	4,391	4,736	97	3,522	296	21,402	2,059	23,461
2006	4,143	4,099	4,383	4,658	109	3,535	308	21,235	2,072	23,307
2007	4,034	3,977	4,262	4,602	133	3,636	312	20,956	2,049	23,005
2008	3,803	3,795	4,280	4,517	241	3,801	319	20,756	2,012	22,768
2009	3,905	3,598	4,134	4,653	210	4,002	329	20,831	2,014	22,845

37

Note: Effective 2000, Off-Campus OSU-T & Tinker Air Force Base column reflects OSU-Tulsa enrollment only.

**ENROLLMENT BY ETHNICITY  
OKLAHOMA STATE UNIVERSITY  
FALL SEMESTERS 1999 THROUGH 2009**

88

Fall Semester	White		African American		Native American		Hispanic		Asian		International		Total
	Number	%	Number	%	Number	%	Number	%	Number	%	Number	%	
1999	16,390	77.7%	694	3.3%	1,453	6.9%	384	1.8%	366	1.7%	1,800	8.5%	<b>21,087</b>
2000	16,507	77.7%	709	3.3%	1,555	7.3%	347	1.6%	366	1.7%	1,768	8.3%	<b>21,252</b>
2001	16,753	76.6%	720	3.3%	1,656	7.6%	400	1.8%	379	1.7%	1,964	9.0%	<b>21,872</b>
2002	17,475	76.0%	766	3.3%	1,784	7.8%	415	1.8%	375	1.6%	2,177	9.5%	<b>22,992</b>
2003	17,905	76.0%	778	3.3%	1,838	7.8%	444	1.9%	371	1.6%	2,235	9.5%	<b>23,571</b>
2004	17,943	75.9%	918	3.9%	1,896	8.0%	447	1.9%	389	1.6%	2,033	8.6%	<b>23,626</b>
2005	17,894	76.3%	917	3.9%	1,973	8.4%	523	2.2%	388	1.7%	1,766	7.5%	<b>23,461</b>
2006	17,769	76.2%	959	4.1%	1,990	8.5%	533	2.3%	411	1.8%	1,645	7.1%	<b>23,307</b>
2007	17,443	75.8%	923	4.0%	1,993	8.7%	525	2.3%	388	1.7%	1,733	7.5%	<b>23,005</b>
2008	17,172	75.4%	930	4.1%	1,964	8.6%	566	2.5%	386	1.7%	1,750	7.7%	<b>22,768</b>
2009	17,297	75.7%	929	4.1%	1,915	8.4%	555	2.4%	363	1.6%	1,786	7.8%	<b>22,845</b>

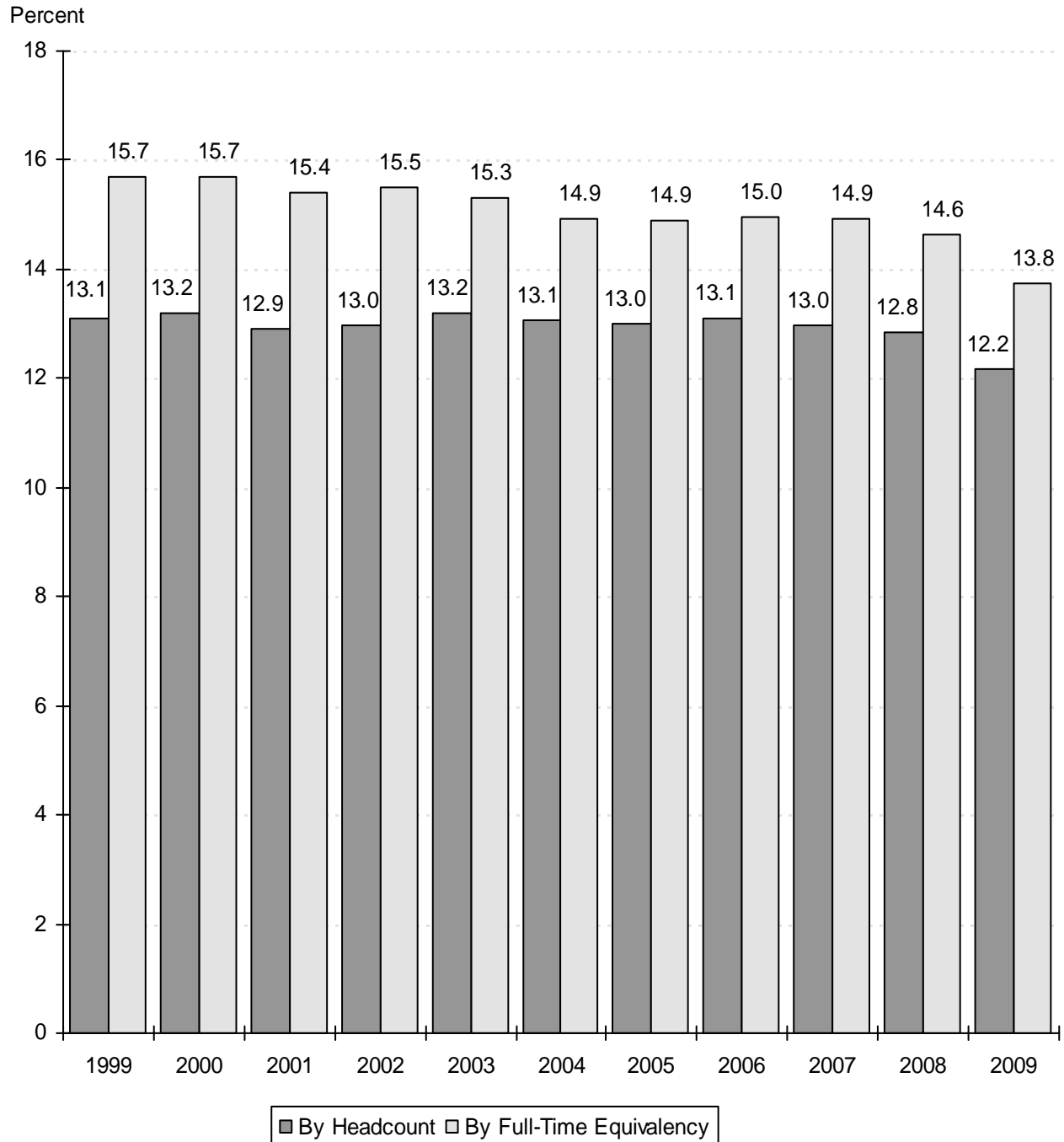
Note: This table includes professional students and OSU-Tulsa students for all years listed. Student Profile books prior to Fall 2003 do not contain OSU-Tulsa students on this page.



**OSU ENROLLMENT AS A PERCENT OF TOTAL ENROLLMENT  
IN THE OKLAHOMA STATE SYSTEMS (PUBLIC)**

**OKLAHOMA STATE UNIVERSITY**

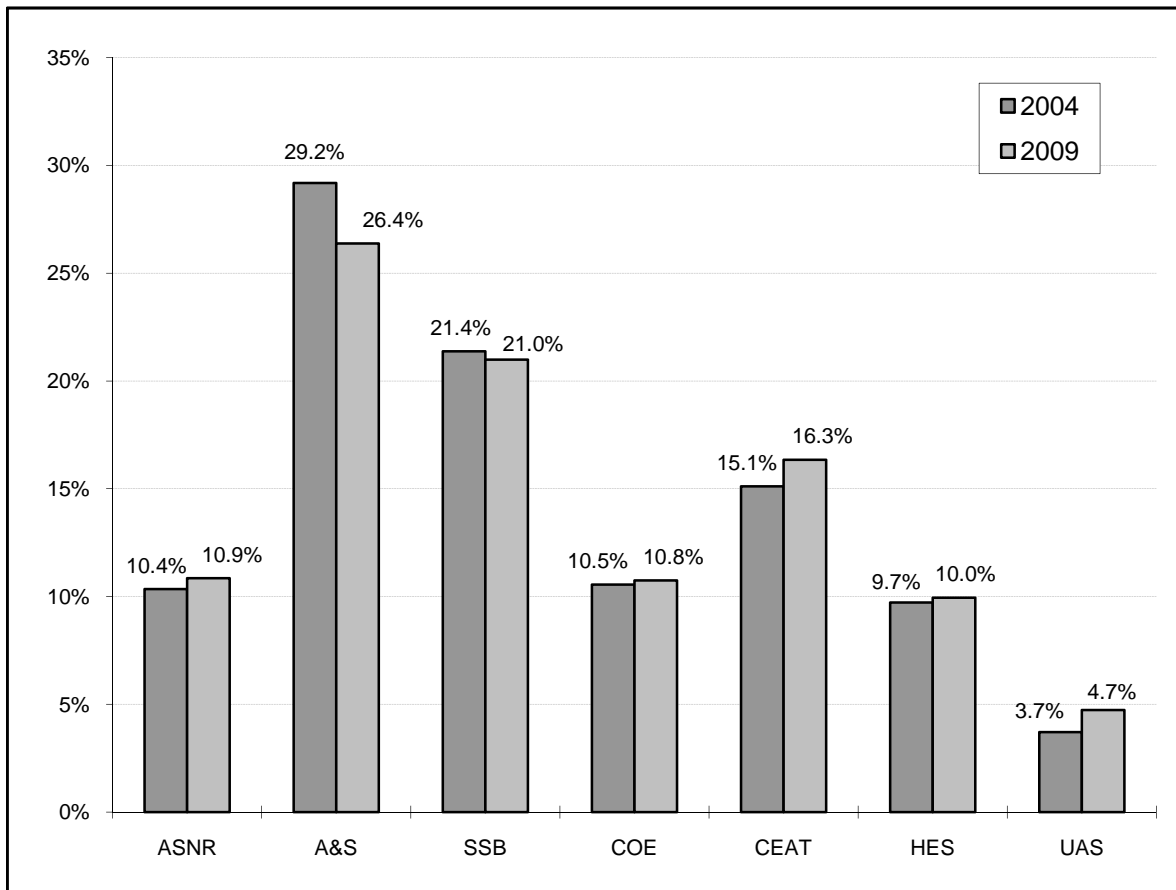
**FALL SEMESTERS 1999 THROUGH 2009**



Source: Preliminary Enrollment Report for Oklahoma Higher Education Fall 2009,  
Oklahoma State Regents for Higher Education.

Note: Total Enrollment in the Oklahoma State Systems (Public) excludes interns and residents. Student Profile books prior to Fall 2008 included interns and residents in the total headcount enrollment.

**COMPARISON OF DISTRIBUTION OF UNDERGRADUATE MAJORS BY COLLEGE  
OKLAHOMA STATE UNIVERSITY  
FALL SEMESTERS 2004 AND 2009**



**UNDERGRADUATE MAJORS BY COLLEGE  
OKLAHOMA STATE UNIVERSITY  
FALL SEMESTERS 2004 THROUGH 2009**

Year	Ag. Sci. & Nat. Res.	Arts & Sciences	Spears Sch. of Bus.	Education	Engr., Arch., & Tech.	Human Envir. Sci.	Univ. Acad. Services	Total
2004	1,945	5,484	4,016	1,982	2,838	1,826	698	<b>18,789</b>
2005	1,922	5,412	4,038	2,081	2,874	1,868	714	<b>18,909</b>
2006	1,829	5,352	4,010	2,039	2,804	1,911	792	<b>18,737</b>
2007	1,933	5,038	4,019	1,922	2,790	1,939	727	<b>18,368</b>
2008	1,907	4,857	3,927	1,911	2,780	1,823	781	<b>17,986</b>
2009	1,937	4,709	3,747	1,919	2,917	1,776	844	<b>17,849</b>

Note: Students are reported in the college in which they are enrolled. This page includes students enrolled at OSU-Tulsa. Student Profile books prior to Fall 2003 do not contain OSU-Tulsa students on this page.

**ENROLLMENT CHANGES  
OKLAHOMA STATE UNIVERSITY  
FALL SEMESTERS 2004 AND 2009**

	2004	2009	% Change
<u>UNDERGRADUATE MAJORS</u>			
Agricultural Sciences & Natural Resources	1,945	1,937	-0.4%
Arts & Sciences	5,484	4,709	-14.1%
Spears School of Business	4,016	3,747	-6.7%
Education	1,982	1,919	-3.2%
Engineering, Architecture, & Technology	2,838	2,917	2.8%
Human Environmental Sciences	1,826	1,776	-2.7%
University Academic Services	698	844	20.9%
<u>AGE</u>			
18 & Under	1,693	1,846	9.0%
19	3,138	2,840	-9.5%
20	3,208	2,956	-7.9%
21	3,355	3,168	-5.6%
22	2,868	2,782	-3.0%
23-29	6,068	6,132	1.1%
30-39	1,842	1,940	5.3%
40 & Over	1,454	1,181	-18.8%
<u>CLASSIFICATION</u>			
New Freshmen	3,263	3,124	-4.3%
Other Freshmen	1,224	801	-34.6%
Sophomores*	4,171	3,719	-10.8%
Juniors*	4,767	4,618	-3.1%
Seniors	5,211	5,344	2.6%
Specials	743	651	-12.4%
Graduates	3,951	4,259	7.8%
Professional	296	329	11.1%
<u>RESIDENT STATUS</u>			
In-State	18,136	17,006	-6.2%
Out-of-State	3,457	4,053	17.2%
International	2,033	1,786	-12.1%
<u>ETHNICITY</u>			
White	17,943	17,297	-3.6%
African American	918	929	1.2%
Native American	1,896	1,915	1.0%
Hispanic	447	555	24.2%
Asian	389	363	-6.7%
International	2,033	1,786	-12.1%
<u>GENDER</u>			
Female	11,379	10,988	-3.4%
Male	12,247	11,857	-3.2%
<b>OVERALL ENROLLMENT</b>	<b>23,626</b>	<b>22,845</b>	<b>-3.3%</b>

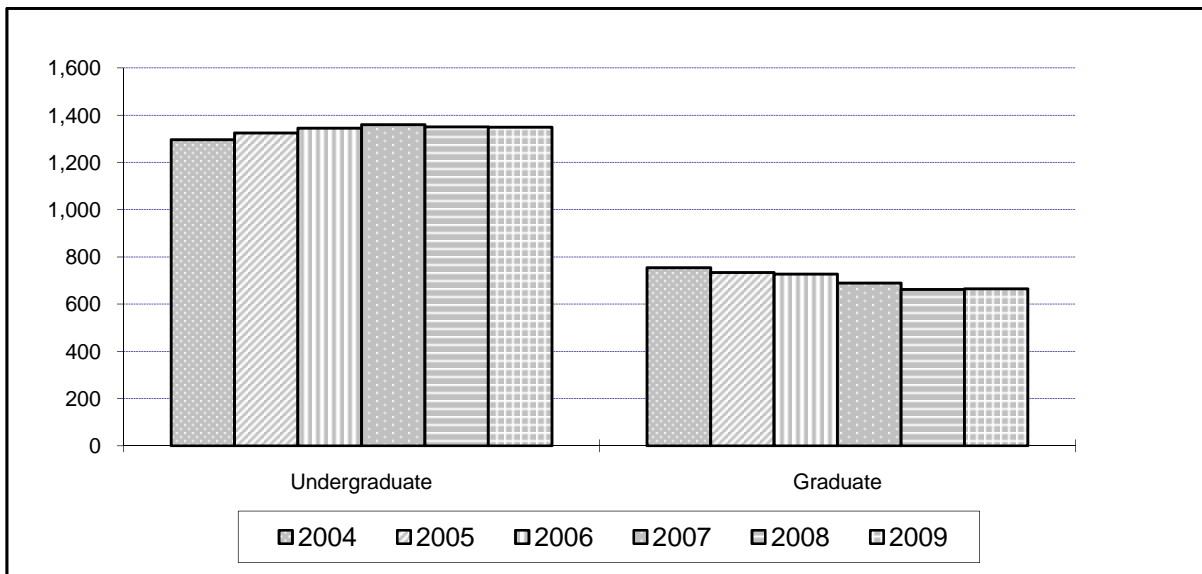
Note: This table includes professional students and OSU-Tulsa students. Student Profile books prior to Fall 2003 do not contain OSU-Tulsa students on this page.

\* 23 sophomores and 1 junior for 2009 and 1 sophomore for 2004 are in their first year of college and thus listed in other tables as new freshmen.

\* Student Profile books prior to Fall 2003 include non-degree-seeking new freshmen in the New Freshmen counts

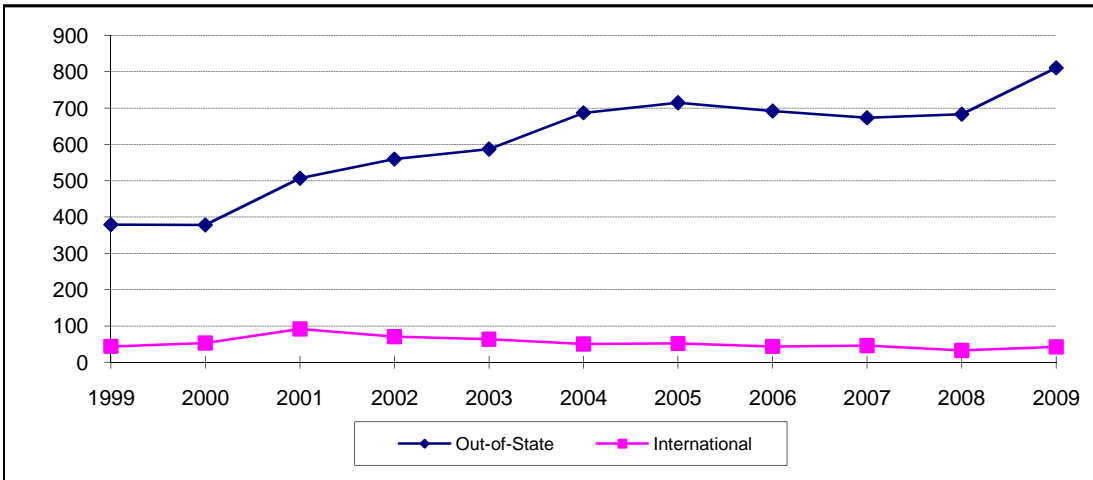
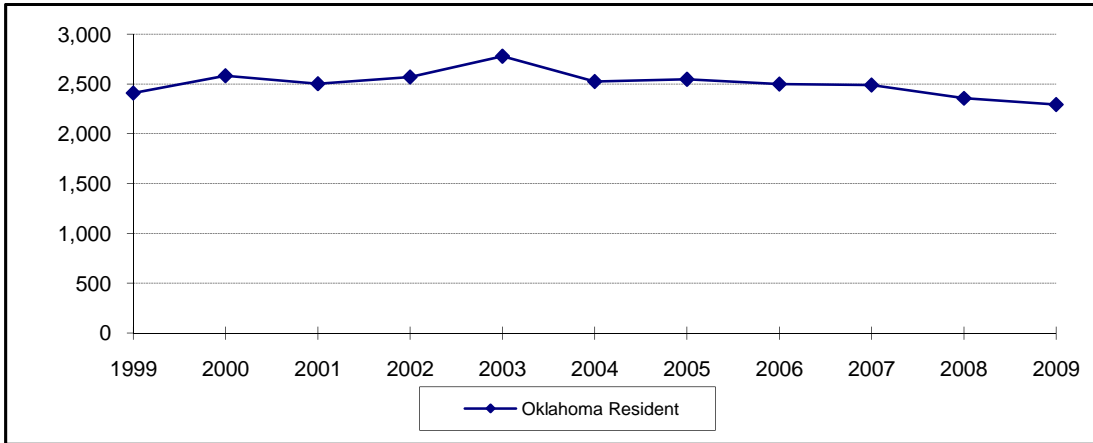
\* Student Profile books prior to Fall 2006 include new concurrent high school students in the New Freshmen counts.

**ENROLLMENT CHANGES  
OKLAHOMA STATE UNIVERSITY AT TULSA  
FALL SEMESTERS 2004 THROUGH 2009**



Classification	2004	2005	2006	2007	2008	2009	% Change 2008 to 2009
<b>Undergraduate</b>	<b>1,296</b>	<b>1,325</b>	<b>1,345</b>	<b>1,360</b>	<b>1,350</b>	<b>1,349</b>	<b>-0.1%</b>
Freshman	25	13	25	14	10	20	100.0%
Sophomore	115	103	96	128	103	121	17.5%
Junior	501	491	521	515	534	484	-9.4%
Senior	607	681	675	673	659	691	4.9%
Special	48	37	28	30	44	33	-25.0%
<b>Graduate</b>	<b>754</b>	<b>734</b>	<b>727</b>	<b>689</b>	<b>662</b>	<b>665</b>	<b>0.5%</b>
Special	208	199	191	160	143	164	14.7%
Master	435	415	421	417	399	381	-4.5%
Doctorate	111	120	115	112	120	120	0.0%
<b>Grand Total</b>	<b>2,050</b>	<b>2,059</b>	<b>2,072</b>	<b>2,049</b>	<b>2,012</b>	<b>2,014</b>	<b>0.1%</b>

**NEW FRESHMEN ENROLLMENT BY RESIDENCY  
OKLAHOMA STATE UNIVERSITY  
FALL SEMESTERS 1999 THROUGH 2009**



Fall Semester	Oklahoma Resident	Out-of-State	International	Total
1999	2,409	379	44	2,832
2000	2,582	378	53	3,013
2001	2,504	507	92	3,103
2002	2,570	560	71	3,201
2003	2,779	587	64	3,430
2004	2,526	687	51	3,264
2005	2,548	715	52	3,315
2006	2,500	692	44	3,236
2007	2,490	673	46	3,209
2008	2,357	683	33	3,073
2009	2,294	811	43	3,148

Note: This table includes students at OSU-Tulsa, but does not include non-degree-seeking new freshmen and new concurrent high school students.

Student Profile books prior to Fall 2003 do not contain OSU-Tulsa students on this page.

Student Profile books prior to Fall 2006 contain new concurrent high school students on this page.

