

# ENROLLMENT PROJECTIONS



## **OKLAHOMA STATE UNIVERSITY FALL SEMESTER HEADCOUNT ENROLLMENT AND PROJECTIONS**

Enrollment at Oklahoma State University showed an increase for the Fall 2009 semester with a headcount of 22,845. This marks the first increase in enrollment since Fall 2004. While the undergraduate portion of enrollment decreased when compared to Fall 2008, the encouraging news is that recruitment efforts by the Office of Undergraduate Admissions were successful, resulting in an increased number of new freshmen, as well as undergraduate transfers. As the number of bachelor degrees granted continues to grow, with the recent senior classes being the largest in more than 20 years, it bodes well for future years that our numbers of new freshmen and undergraduate transfers are keeping pace.

The projections for future years presented in this section are mathematical models based on past trends in applications, admitted students, and subsequent enrollments, as well as retention rates and forecasts of high school graduates. Forecasts for Oklahoma high school graduates show numbers fluctuating over the next four years. Because the OSU freshman class is made up of almost 75% Oklahoma residents, these forecasts are the primary source of projection numbers for freshman enrollment. The forecasts of Oklahoma high school graduates used in this section are based upon information from the Oklahoma State Department of Education and the State Regents for Higher Education. They assume that demographic trends such as immigration into and emigration out of the state will remain relatively constant.

Graduate enrollment at OSU was also a source of significant growth for the Fall 2009 semester with graduate student headcount increasing by 204 students. This is not surprising considering the current economy, along with increased unemployment rates which typically lead to increased numbers of people returning to school.

In summary, several factors affect enrollment projections at OSU. Some of these factors depend on policy decisions originating with the Oklahoma State Regents for Higher Education and others depend on recruitment policies set by OSU administration. The impact of these policies, as well as changing admissions, enrollment, retention, scholarship, and recruiting practices, all have a role in determining future enrollment at Oklahoma State University. The Office of Institutional Research & Information Management will continue to monitor developments in these areas and assess their impact on enrollment.

**OKLAHOMA HIGH SCHOOL GRADUATES AND ACT TEST-TAKERS  
1999-2000 THROUGH 2008-2009 ACTUAL**

Year	HS Grads	ACT Takers	Percent
1999-2000	38,512	27,850	72.3%
2000-2001	38,344	27,910	72.8%
2001-2002	37,699	26,717	70.9%
2002-2003	37,688	27,009	71.7%
2003-2004	38,109	26,556	69.7%
2004-2005	37,446	26,297	70.2%
2005-2006	37,940	26,425	69.6%
2006-2007	38,314	26,360	68.8%
2007-2008	38,915	27,131	69.7%
2008-2009*	38,518	27,054	70.2%

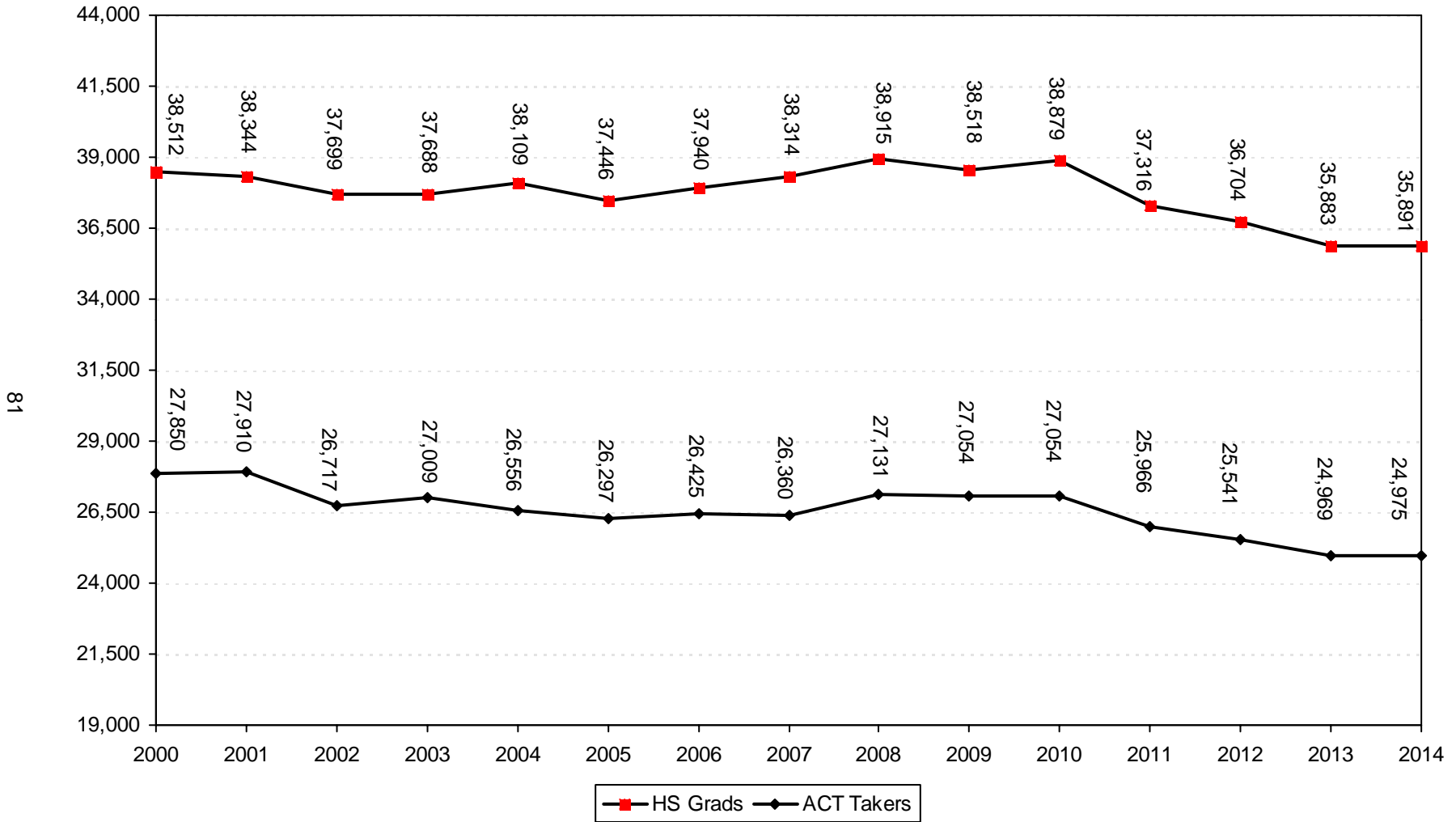
*Sources* : 2007-2008 Student Data Report, Oklahoma State Regents for Higher Education.  
 ACT High School Profile Report, HS Graduating Class 2009, Oklahoma.  
 \* 2008-2009 high school graduate count is a projection.

**PROJECTIONS OF OKLAHOMA HIGH SCHOOL GRADUATES  
AND ACT TEST-TAKERS**

2009-2010	38,879	27,054	69.6%
2010-2011	37,316	25,966	69.6%
2011-2012	36,704	25,541	69.6%
2012-2013	35,883	24,969	69.6%
2013-2014	35,891	24,975	69.6%

*Sources*: 2007-2008 Student Data Report, Oklahoma State Regents for Higher Education.  
 Projections of ACT test-takers are based on past patterns of participation.

## HIGH SCHOOL GRADUATES IN OKLAHOMA 1999-2000 THROUGH 2007-2008 ACTUAL, WITH PROJECTIONS TO 2013-2014



Note: High school graduate numbers are revised based on the 2007-2008 OSRHE Student Data Report. Projections from 2009 – 2014 are also from the 2007-2008 OSRHE Student Data Report.

**PROJECTION OF NEW FRESHMEN\***  
**OKLAHOMA STATE UNIVERSITY**  
**FALL SEMESTERS 2000 THROUGH 2009 (ACTUAL)**  
**WITH PROJECTIONS THROUGH FALL 2014**

Year	Resident	Nonresident US Citizen	International	Total
<u>Actual</u>				
2000	2,582	378	53	3,013
2001	2,504	507	92	3,103
2002	2,570	560	71	3,201
2003	2,779	587	64	3,430
2004	2,526	687	51	3,264
2005	2,548	715	52	3,315
2006	2,500	692	44	3,236
2007	2,490	673	46	3,209
2008	2,357	683	33	3,073
2009	2,294	811	43	3,148
<u>Projection</u>				
2010	2,569	780	44	3,393
2011	2,520	765	43	3,328
2012	2,515	764	43	3,322
2013	2,502	759	43	3,304
2014	2,527	767	43	3,337

Note: Projections are based on historical patterns of admitted new freshmen and enrolled new freshmen.

\* New freshmen counts exclude concurrent high school students and non-degree-seeking students for all years listed.

Prior to the Fall 2001 semester, out-of-state recruiting efforts were expanded and contributed to the substantial increase in out-of-state new freshmen.

**HEADCOUNT ENROLLMENT PROJECTIONS  
OKLAHOMA STATE UNIVERSITY  
FALL SEMESTERS 2000 THROUGH 2009 ACTUAL, WITH PROJECTIONS THROUGH FALL 2014**

Year	Freshman		Sophomore	Junior	Senior	Special Undergrad	Total Undergrad	Master	Doctorate	Special Graduate	Total Graduate	Total OSU-Stillwater	CVHS	OSU-T Undergrad	OSU-T Grad	Grand Total
	New	Other														
<b>Actual</b>																
2000	3,072	1,076	3,765	3,834	4,339	46	16,132	1,983	1,133	320	3,436	19,568	292	527	865	21,252
2001	3,165	1,196	3,886	3,925	4,234	51	16,457	2,122	1,102	302	3,526	19,983	289	754	846	21,872
2002	3,265	1,208	3,944	4,115	4,458	49	17,039	2,340	1,180	298	3,818	20,857	292	1,004	839	22,992
2003	3,481	1,168	4,083	4,197	4,548	14	17,491	2,328	1,223	265	3,816	21,307	297	1,192	775	23,571
2004	3,263	1,199	4,056	4,266	4,604	105	17,493	2,204	1,201	382	3,787	21,280	296	1,296	754	23,626
2005	3,304	1,021	4,035	4,391	4,736	97	17,584	2,042	1,226	254	3,522	21,106	296	1,325	734	23,461
2006	3,221	922	4,099	4,383	4,658	109	17,392	2,005	1,239	291	3,535	20,927	308	1,345	727	23,307
2007	3,191	843	3,977	4,262	4,602	133	17,008	2,145	1,252	239	3,636	20,644	312	1,360	689	23,005
2008	3,054	749	3,795	4,280	4,517	241	16,636	2,212	1,321	268	3,801	20,437	319	1,350	662	22,768
2009	3,124	781	3,598	4,134	4,653	210	16,500	2,393	1,365	244	4,002	20,502	329	1,349	665	22,845
<b>Projection</b>																
2010	3,393	796	3,733	3,926	4,430	195	16,473	2,441	1,379	244	4,064	20,537	335	1,363	672	22,907
2011	3,328	830	3,932	4,075	4,221	195	16,581	2,490	1,393	244	4,127	20,708	335	1,377	678	23,098
2012	3,322	826	3,908	4,264	4,372	195	16,887	2,540	1,407	244	4,191	21,078	335	1,391	685	23,489
2013	3,304	825	3,901	4,241	4,562	195	17,028	2,591	1,421	244	4,256	21,284	335	1,405	692	23,716
2014	3,337	822	3,886	4,234	4,539	195	17,013	2,643	1,435	244	4,322	21,335	335	1,419	699	23,788

Note: New freshmen projections are based on historical patterns of admitted new freshmen and enrolled new freshmen. On-campus sophomore, junior, and senior projections are based on cohort survival rates.

