

ENROLLMENT PROJECTIONS

OKLAHOMA STATE UNIVERSITY FALL SEMESTER HEADCOUNT ENROLLMENT AND PROJECTIONS

Enrollment at Oklahoma State University showed a decrease for the Fall 2007 Semester with a headcount of 23,005. However, the 2007 new freshmen class enrollment stayed relatively level, and showed increases in academic achievement. These achievements include an average ACT score of 24.8, an increase in National Merit Scholars for the 3rd year, 15 National Hispanic Scholars, and over 500 (16%) new freshmen entering OSU with a perfect 4.0 GPA from their high school. Also, because institutional diversity has been targeted as a priority, it is promising to note that international student enrollment continues to rebound, with an increase in continuing international graduate students, as well as an increase in new international students for the 4th consecutive year.

The projections for future years presented in this section are mathematical models based on past trends in applications, admitted students, and subsequent enrollments, as well as retention rates and forecasts of high school graduates. Forecasts for Oklahoma high school graduates show numbers should remain relatively constant over the next 4 years. Because the OSU freshman class is made up of almost 80% Oklahoma residents, these forecasts are the primary source of projection numbers for freshman enrollment. The forecasts of Oklahoma high school graduates used in this section are based upon information from the Oklahoma State Department of Education and the State Regents for Higher Education. They assume that demographic trends such as immigration into and emigration out of the state will remain relatively constant.

Graduate enrollment at OSU continued to increase for Fall 2007 Semester. This is especially encouraging considering graduate enrollment typically declines during upswings in the economy and improving job markets that are currently occurring in Oklahoma. The increase is also a positive sign after several years that showed substantial increases in graduate degrees granted.

In summary, several factors affect enrollment projections at OSU. Some of these factors depend on policy decisions originating with the Oklahoma State Regents for Higher Education and others depend on recruitment policies set by OSU administration. The impact of these policies, as well as changing admissions, enrollment, retention, scholarship, and recruiting practices, all have a role in determining future enrollment at Oklahoma State University. The Office of Institutional Research & Information Management will continue to monitor developments in these areas and assess their impact on enrollment.

**OKLAHOMA HIGH SCHOOL GRADUATES AND ACT TEST-TAKERS
1997-1998 THROUGH 2006-2007 ACTUAL**

Year	HS Grads	ACT Takers	Percent
1997-1998	36,254	25,303	69.8%
1998-1999	37,396	26,455	70.7%
1999-2000	38,512	27,850	72.3%
2000-2001	38,344	27,910	72.8%
2001-2002	37,699	26,717	70.9%
2002-2003	37,688	27,009	71.7%
2003-2004	38,109	26,556	69.7%
2004-2005	37,446	26,297	70.2%
2005-2006	37,940	26,425	69.6%
2006-2007*	37,752	26,360	69.8%

Sources : Student Data Report, Oklahoma State Regents for Higher Education, June 2007.

ACT High School Profile Report, HS Graduating Class 2007, Oklahoma.

* 2006-2007 high school graduate count is a projection.

**PROJECTIONS OF OKLAHOMA HIGH SCHOOL GRADUATES
AND ACT TEST-TAKERS**

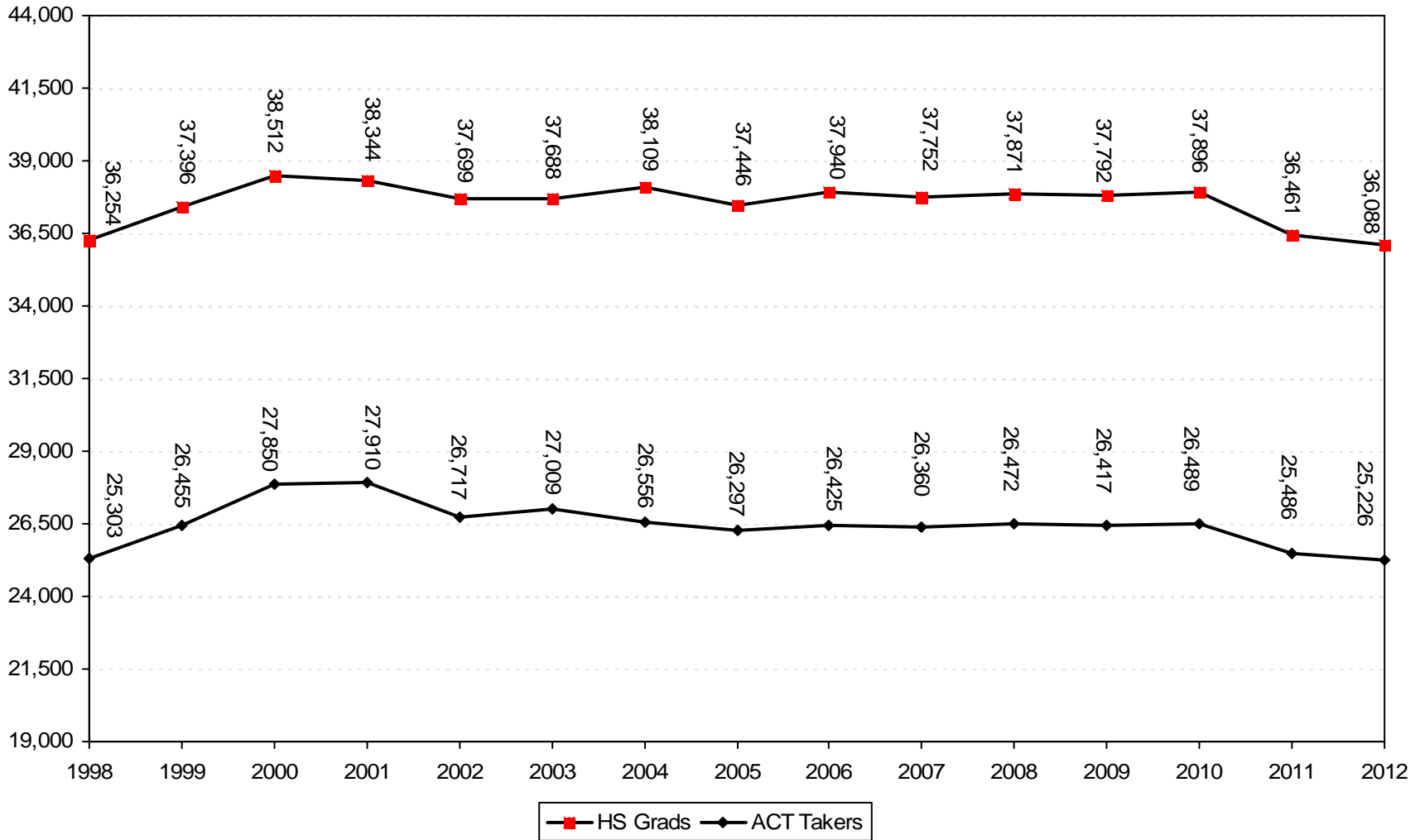
2007-2008	37,871	26,472	69.9%
2008-2009	37,792	26,417	69.9%
2009-2010	37,896	26,489	69.9%
2010-2011	36,461	25,486	69.9%
2011-2012	36,088	25,226	69.9%

Sources: Student Data Report, Oklahoma State Regents for Higher Education, June 2007.

Projections of ACT test-takers are based on past patterns of participation.

HIGH SCHOOL GRADUATES IN OKLAHOMA
1997-1998 THROUGH 2005-2006 ACTUAL, WITH PROJECTIONS TO 2011-2012

81



Note: High school graduate numbers are revised based on OSRHE Student Data Report, June 2007. Projections from 2007 – 2012 are also from the OSRHE Student Data Report, June 2007.

PROJECTION OF NEW FRESHMEN*
OKLAHOMA STATE UNIVERSITY
FALL SEMESTERS 1998 THROUGH 2007 (ACTUAL)
WITH PROJECTIONS THROUGH FALL 2012

Year	Resident	Nonresident US Citizen	International	Total
<u>Actual</u>				
1998	2,127	386	54	2,567
1999	2,409	379	44	2,832
2000	2,582	378	53	3,013
2001	2,504	507	92	3,103
2002	2,570	560	71	3,201
2003	2,779	587	64	3,430
2004	2,526	687	51	3,264
2005	2,548	715	52	3,315
2006	2,500	692	44	3,236
2007	2,490	673	46	3,209
<u>Projection</u>				
2008	2,411	634	47	3,092
2009	2,406	634	47	3,087
2010	2,413	634	47	3,094
2011	2,321	634	47	3,002
2012	2,297	634	47	2,978

Note: Projections are based on historical patterns of admitted new freshmen and enrolled new freshmen.

* New freshmen counts exclude concurrent high school students and non-degree-seeking students for all years listed.

Prior to the Fall 2001 semester, out-of-state recruiting efforts were expanded and contributed to the substantial increase in out-of-state new freshmen.

**HEADCOUNT ENROLLMENT PROJECTIONS
OKLAHOMA STATE UNIVERSITY
FALL SEMESTERS 1998 THROUGH 2007 ACTUAL, WITH PROJECTIONS THROUGH FALL 2012**

Year	Freshman		Sophomore	Junior	Senior	Special Undergrad	Total Undergrad	Master	Doctorate	Special Graduate	Total Graduate	Total OSU-Stillwater	CVHS	OSU-T Undergrad	OSU-T Grad	Other Off-Campus	Grand Total
	New	Other															
Actual																	
1998	2,645	935	3,464	3,874	4,379	25	15,322	2,090	1,224	588	3,902	19,224	297	140	717	88	20,466
1999	2,904	1,173	3,543	3,923	4,235	36	15,814	1,987	1,137	492	3,616	19,430	294	552	716	95	21,087
2000	3,072	1,076	3,765	3,834	4,339	46	16,132	1,983	1,133	320	3,436	19,568	292	527	865	0	21,252
2001	3,165	1,196	3,886	3,925	4,234	51	16,457	2,122	1,102	302	3,526	19,983	289	754	846	0	21,872
2002	3,265	1,208	3,944	4,115	4,458	49	17,039	2,340	1,180	298	3,818	20,857	292	1,004	839	0	22,992
2003	3,481	1,168	4,083	4,197	4,548	14	17,491	2,328	1,223	265	3,816	21,307	297	1,192	775	0	23,571
2004	3,263	1,199	4,056	4,266	4,604	105	17,493	2,204	1,201	382	3,787	21,280	296	1,296	754	0	23,626
2005	3,304	1,021	4,035	4,391	4,736	97	17,584	2,042	1,226	254	3,522	21,106	296	1,325	734	0	23,461
2006	3,221	922	4,099	4,383	4,658	109	17,392	2,005	1,239	291	3,535	20,927	308	1,345	727	0	23,307
2007	3,191	843	3,977	4,262	4,602	133	17,008	2,145	1,252	239	3,636	20,644	312	1,360	689	0	23,005
Projection																	
2008	3,092	882	3,899	4,192	4,577	113	16,755	2,177	1,265	241	3,683	20,438	308	1,387	689	0	22,822
2009	3,087	866	3,826	4,128	4,506	113	16,526	2,210	1,278	243	3,731	20,257	308	1,415	689	0	22,669
2010	3,094	858	3,799	4,052	4,438	113	16,354	2,243	1,291	245	3,779	20,133	308	1,443	696	0	22,580
2011	3,002	853	3,787	4,020	4,360	113	16,135	2,277	1,304	247	3,828	19,963	308	1,472	703	0	22,446
2012	2,978	834	3,700	4,002	4,325	113	15,952	2,311	1,317	249	3,877	19,829	308	1,502	710	0	22,349

Note: New freshmen projections are based on historical patterns of admitted new freshmen and enrolled new freshmen. On-campus sophomore, junior, and senior projections are based on cohort survival rates.

